

STREET LIGHTING SPECIFICATIONS

- 30-FOOT STEEL STREETLIGHT STANDARD
 - DIMENSIONS**
STREETLIGHT STANDARDS SHALL PROVIDE A FIXTURE MOUNTING HEIGHT OF 30'0" PLUS OR MINUS 6" WITH A TYPICAL 12 FOOT MAST ARM WITH A THREE FOOT OVERHANG.

BASE PLATE SHALL HAVE SLOTTED HOLES TO ACCOMMODATE 1-INCH ANCHOR BOLTS, AND 1 1/2" BOLT CIRCLE WITH MINIMUM CLEARANCE OF 1" BETWEEN BOLT AND POLE.

HANDHOLE CENTER SHALL BE LOCATED APPROXIMATELY 12 INCHES FROM THE BASE PLATE, ROTATED 270 DEGREES FROM MAST ARM SO AS THE HANDHOLE IS LOCATED ON THE SIDE OPPOSING ONCOMING TRAFFIC.
 - STRENGTH**
POLES SHALL MEET ALL STRENGTH REQUIREMENTS OF AASHTO FOR 90 MPH ISOTACH WHEN USED WITH A LUMINAIRE WEIGHING 48 POUNDS WITH A E.P.A. OF 1.1 SQUARE FEET. ALL ATTACHING BOLTS AND SCREWS THAT ARE NOT GALVANIZED SHALL BE STAINLESS STEEL.
 - FINISH**
THE POLES AND ALL HARDWARE SHALL BE HOT DIPPED GALVANIZED, MINIMUM 3 MIL THICKNESS.
 - MAST ARM ATTACHMENT** SHALL BE SECURED BY 3 BOLTS.
 - EACH POLE SHALL HAVE HANDHOLE (WITH COVER), GROUND LUG AND REMOVABLE POLE CAP.
 - EACH CITY POLE SHALL HAVE A BLACK 4" TO 6" LETTER C STENCILED ON ROADWAY SIDE OF POLE 16" ABOVE GRADE.
- ANCHORAGE**
 - POLES SHALL BE ANCHORED WITH 4 BOLTS, 1"x3/8"x14" #BUNG WITH HOT DIPPED GALVANIZING AFTER THREADS ARE CUT. GALVANIZED AREA SHALL EXTEND FROM THREADED END FOR A MINIMUM OF 12 INCHES. BOLTS SHALL BE PROVIDED WITH 2 GALVANIZED NUTS AND FLAT WASHERS FOR LEVELING. SHIMS WILL NOT BE USED.
 - A NON-SHRINKING GROUT SHALL BE INSTALLED WITH ONE 1/2" DRAIN HOLE UNDER THE BASE PLATE AFTER THE ENGINEER HAS APPROVED THE POLE INSTALLATION.
- CONDUIT**
ALL CONDUIT SHALL BE BURIED A MINIMUM OF 24 INCHES DEEP. ALL ROADWAY CROSSINGS SHALL BE RIGID METALLIC OR SCHEDULE 80 PVC. CONDUIT SHALL CONFORM TO SECTION 9-29 OF WSDOT STANDARD SPECIFICATIONS. SCHEDULE 80 PVC MAY BE USED IN LOCATIONS OTHER THAN ROADWAY CROSSINGS.

CITY OF PUYALLUP
DEVELOPMENT ENGINEERING and
PUBLIC WORKS DEPARTMENTS

STREET LIGHT SPECIFICATIONS		CITY STANDARD	
DESIGNED BY: TIM FERRELL/AVO/06/04	DESIGNED BY: LINDA LEAN	APPROVED BY: COLLEEN HARRIS	REVISION BY: LINDA LEAN
DATE: 01/05/01	DATE: 01/05/01	DATE: 01/05/01	DATE: 01/05/01

(STR LIGHT SPECS CONTINUED)

- JUNCTION BOXES (WHEN REQUIRED)**
JUNCTION BOXES SHALL BE INSTALLED AT LOCATIONS AS SHOWN ON THE PLANS. THEY WILL CONFORM TO WSDOT STANDARD PLAN J-40-10-02, TYPE 1. THEY SHALL BE LEVEL WITH THE SIDEWALK GRADE AND FINELY BEDED TO PREVENT FUTURE SETTLING. JUNCTION BOXES ARE PREFERRED NOT TO BE INSTALLED IN THE SIDEWALK. THE COVER SHALL BE GALVANIZED AND GROUNDED. THE LETTERS "JT" SHALL BE ETCHED ON THE COVER. (SEE CITY STANDARD DETAIL NO. 01.06.01.) IF THE JUNCTION BOX IS NOT IN THE SIDEWALK THEN IT SHALL HAVE A CONCRETE COLLAR. IF THE JUNCTION BOX IS IN THE SIDEWALK THEN IT SHALL HAVE A NON-SLIP SURFACE TREATMENT. SEE CITY STANDARD DETAIL NO. 01.06.01.
- CONDUCTORS, WIRES, ETC.**
WIRE CONDUCTORS FOR UNDERGROUND FEEDER RUNS AND FOR CIRCUITRY FROM THE IN-LINE FUSE IN THE POLES TO THE JUNCTION BOX SHALL BE 600 VOLT, SINGLE CONDUCTOR STRANDED COPPER AND INSULATED WITH USE GRADE POLYVINYL CHLORIDE COMPOUND (XLP) OR APPROVED EQUAL IN ACCORDANCE WITH THE INSULATED POWER CABLE ENGINEER'S ASSOCIATION SPECIFICATIONS. AN AWG NO. 8 GREEN INSULATED STRANDED COPPER WIRE WILL BE RUN TO THE SERVICE GROUND LUG ON EACH POLE. FEEDERS SHALL BE SIZED IN ACCORDANCE WITH THE NATIONAL ELECTRICAL CODE. WIRES INSIDE THE POLE BETWEEN BALLAST AND IN-LINE FUSES SHALL BE ROME 20 AWG 10 STRANDED POLE AND BRACKET WIRE OR APPROVED EQUAL. SPLICES WILL BE ALLOWED IN JUNCTION BOXES AND POLE BASES ONLY. NO MORE THAN 2 CONDUITS WILL BE ALLOWED INSIDE THE STREET POLE.
- FUSES**
LUMINAIRE FUSING AND ELECTRICAL CONNECTIONS AT LIGHT STANDARD BASES SHALL CONFORM TO SECTION 9-29.7 OF THE STATE OF WASHINGTON STANDARD SPECIFICATIONS AND AS SHOWN ON THE UNIFORM LUMINAIRE WIRING DETAIL IN THE APPENDIX. IN-LINE FUSE HOLDERS SHALL BE SEC MODEL 1791-1F WITH FNM-5 FUSES OR APPROVED EQUAL. (REFER TO CITY STANDARD DETAIL NO. 01.06.01)
- LUMINAIRES AND LAMPS**
RESIDENTIAL STREETS AND NEIGHBORHOOD COLLECTORS:
LEOTEC LED GC1-40E-WV-NW-2-530 (67 WATT LED)

ARTERIALS AND COMMERCIAL COLLECTORS:
GE EVOLVE LED ERS2-E-0-HX-EX-5-40 (130 WATT LED)

THE CITY WILL ENERGIZE THE STREET LIGHTS WHEN A HOME IS OCCUPIED ADJACENT TO A STREET LIGHT OR IMMEDIATELY ACROSS THE STREET. AT THE DEVELOPER'S REQUEST, STREET LIGHTS MAY BE ENERGIZED PRIOR TO OCCUPANCY OF HOMES. HOWEVER, THE DEVELOPER OR BUILDER SHALL ASSUME FULL RESPONSIBILITY FOR ELECTRICAL POWER COSTS AND REPAIR COSTS DUE TO VANDALISM, THEFT, OR CONSTRUCTION.
- SAFE WIRING LABELS**
THE CONTRACTOR IS ADVISED THAT SAFE WIRING LABELS REQUIRED BY LABOR AND INDUSTRIES SHALL APPLY ON THIS PROJECT. (ELECTRICAL INSPECTION STICKER)
- GUARANTEE**
THE CONTRACTOR SHALL SURRENDER TO THE CITY OF PUYALLUP ANY GUARANTEE OR WARRANTY ACQUIRED BY HIM AS A NORMAL TRADE PRACTICE IN CONNECTION WITH THE PURCHASE OF ANY MATERIALS OR ITEMS USED IN THE CONSTRUCTION OF THE ILLUMINATION.
- LOCATION**
SEE CITY STANDARD SECTION 01.01 ROADWAY DESIGN.

CITY OF PUYALLUP
DEVELOPMENT ENGINEERING and
PUBLIC WORKS DEPARTMENTS

STREET LIGHT SPECIFICATIONS (CONT.)		CITY STANDARD	
DESIGNED BY: TIM FERRELL/AVO/06/04	DESIGNED BY: LINDA LEAN	APPROVED BY: COLLEEN HARRIS	REVISION BY: LINDA LEAN
DATE: 01/05/02	DATE: 01/05/02	DATE: 01/05/02	DATE: 01/05/02

TYPICAL STREET LIGHT INSTALLATION

NOTES:

- A METER SERVICE DISCONNECT IS REQUIRED FOR EACH BRANCH CIRCUIT. SEE CITY STANDARD DETAIL NO. 01.05.05
- INSTALLATION SHALL CONFORM TO NATIONAL ELECTRICAL CODE, WSDOT, AND CITY STANDARDS.
- PHASING TAPE IS NOT ALLOWED
- ALL WIRES SHALL BE INSTALLED IN CONDUIT AS SPECIFIED ABOVE
- ALL SPLICES SHALL BE MADE IN A JUNCTION BOX. WIRE NUTS WILL NOT BE ALLOWED. SPLICES SHALL BE CENTERED AND ENCASED IN 3M SCOTCHCAST EPOXY KIT TYPE 82-A1, 82-B1, OR CITY APPROVED EQUAL. OTHER GEL TAP SPLICE KITS AND DIRECT BURIAL AND SUBMERSIBLE SPLICES TO BE ALLOWED IF APPROVED BY THE CITY.
- GROUND ROD COVER SHALL BE UTILITY VAULT #94B-924 OR APPROVED EQUIVALENT.

CONDUCTORS SHALL BE TYPE USE (NLP) INSULATED, STRANDED, COPPER, #8 A.W.G. MINIMUM SIZE.

CITY OF PUYALLUP
DEVELOPMENT ENGINEERING and
PUBLIC WORKS DEPARTMENTS

TYPICAL STREET LIGHT INSTALLATION		CITY STANDARD	
DESIGNED BY: TIM FERRELL/AVO/06/04	DESIGNED BY: LINDA LEAN	APPROVED BY: COLLEEN HARRIS	REVISION BY: LINDA LEAN
DATE: 01/05/01	DATE: 01/05/01	DATE: 01/05/01	DATE: 01/05/01

SEE ALTERNATE LIGHT POLE DESIGN IN THIS SHEET DRAWING #EL-404

NOTE:
1. IT SHALL BE THE CONTRACTOR'S RESPONSIBILITY TO COORDINATE THE INSTALLATION OF THE STREET LIGHT SYSTEM WITH ALL UTILITIES, PRIVATE AND PUBLIC, TO AVOID SCHEDULE AND LOCATION CONFLICTS.
2. FOR RESIDENTIAL STREET LIGHTING THE CONTRACTOR SHALL BE RESPONSIBLE TO INSTALL ONE METER FOR THE PLANT'S LIGHTING SYSTEM PER PUYEY SOUND ENERGY REQUIREMENTS. ON VERY LARGE PLATS PUYEY SOUND ENERGY MAY REQUIRE MORE THAN ONE METER.
3. LUMINAIRE TO BE FLAT LENS GLASS WITH CUT OFF 150W FOR SIGNALIZED INTERSECTIONS, 150W OR 200W FOR COMMERCIAL AREA AND 100W FOR RESIDENTIAL.

CITY OF PUYALLUP
DEVELOPMENT ENGINEERING and
PUBLIC WORKS DEPARTMENTS

STREET LIGHT		CITY STANDARD	
DESIGNED BY: TIM FERRELL/AVO/06/04	DESIGNED BY: LINDA LEAN	APPROVED BY: COLLEEN HARRIS	REVISION BY: LINDA LEAN
DATE: 01/05/01	DATE: 01/05/01	DATE: 01/05/01	DATE: 01/05/01

EL-404 Arterial Street Signal & Luminaire Pole

THE ARM LENGTH SHALL BE DETERMINED AND COMPLY WITH THE CITY OF PUYALLUP DESIGN STANDARD DETAIL #01.05.04 IN THIS SHEET. THE END OF HEAD SHALL BE AT LEAST 3R FROM THE FACE OF CURB

NOTE:
1. CONTRACTOR IS TO VERIFY THAT DETAIL SPECIFICATIONS AND EQUIPMENT LOCATIONS MEET WITH SERVING UTILITIES' AND CITY OF PUYALLUP ENGINEERING REQUIREMENTS.
2. FOUNDATION TO BE 30" ROUND, TOP 5-1/2" OF FOUNDATION WILL BE 24" SQUARE.

CITY OF PUYALLUP
DEVELOPMENT ENGINEERING and
PUBLIC WORKS DEPARTMENTS

ARTERIAL STREET SIGNAL AND LUMINAIRE POLE		DRAWING	
APPROVED	DATE	EL-404	

188
NOTE: ALTERNATE LIGHT POLE DESIGN FOR LIGHT POLES (PL1, PL2, AND PL3) TO AVOID CONFLICT WITH EXISTING PSE OVERHEAD UTILITY POWER LINES.

CONCRETE STREETLIGHT FOUNDATION TYPICAL

NOTE:
1. CONTRACTOR IS TO VERIFY THAT DETAIL SPECIFICATIONS AND EQUIPMENT LOCATIONS MEET WITH SERVING UTILITIES' AND CITY OF PUYALLUP ENGINEERING REQUIREMENTS.
2. FOUNDATION TO BE 30" ROUND, TOP 5-1/2" OF FOUNDATION WILL BE 24" SQUARE.

LOWER LEVELING NUTS SHOULD BE CLOSE TO CONCRETE (ABOUT 1") TO PREVENT EXCESSIVE STRESSES IN THE ANCHOR BOLTS CAUSED BY TORSIONAL FORCES IN THE POLE. ANCHOR BOLTS WILL EXTEND ABOVE TOP NUT, 2 THREADS MINIMUM AND 5/8" MAXIMUM.

CITY OF PUYALLUP
DEVELOPMENT ENGINEERING and
PUBLIC WORKS DEPARTMENTS

CONCRETE STREETLIGHT FOUNDATION TYPICAL		CITY STANDARD	
DESIGNED BY: TIM FERRELL/AVO/06/04	DESIGNED BY: LINDA LEAN	APPROVED BY: COLLEEN HARRIS	REVISION BY: LINDA LEAN
DATE: 01/05/01	DATE: 01/05/01	DATE: 01/05/01	DATE: 01/05/01

APPROVED

BY: _____
CITY OF PUYALLUP
ENGINEERING SERVICES

DATE: _____

NOTE: THIS APPROVAL IS VOID AFTER 1 YEAR FROM APPROVAL DATE. THE CITY WILL NOT BE RESPONSIBLE FOR ERRORS AND/OR OMISSIONS ON THESE PLANS. FIELD CONDITIONS MAY DICTATE CHANGES TO THESE PLANS AS DETERMINED BY THE ENGINEERING SERVICE MANAGER

bce engineers, inc.
p: (253) 922-0446
f: (253) 922-0886
6021 12th street east, suite 200, fife, wa 98424

10/11/2023

REUSE OF DOCUMENTS
THE DRAWINGS AND SPECIFICATIONS CONTAINED HEREIN ARE THE PROPRIETARY, UNPUBLISHED PROPERTY OF BCE ENGINEERS, INC. AND SHALL NOT BE REPRODUCED, COPIED, OR DISCLOSED IN WHOLE OR PART WITHOUT THE WRITTEN PERMISSION OF BCE ENGINEERS, INC.

PUYALLUP DUPLEX STREET LIGHTING
433 & 409 43RD AV SW
PUYALLUP, WA 98373

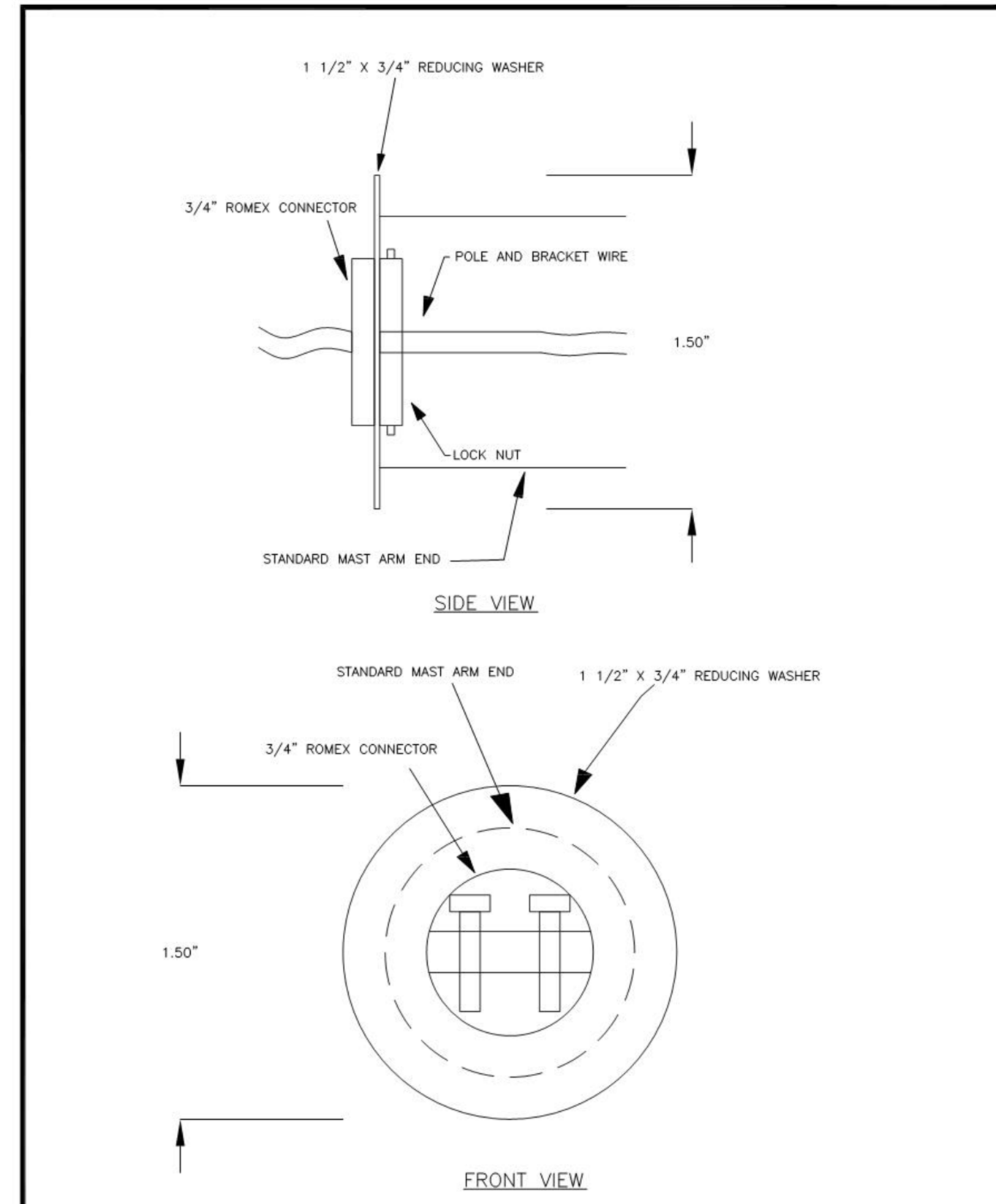
CITY OF PUYALLUP STREET LIGHTING DETAILS

REVISIONS		
NO.	DESCRIPTION	DATE

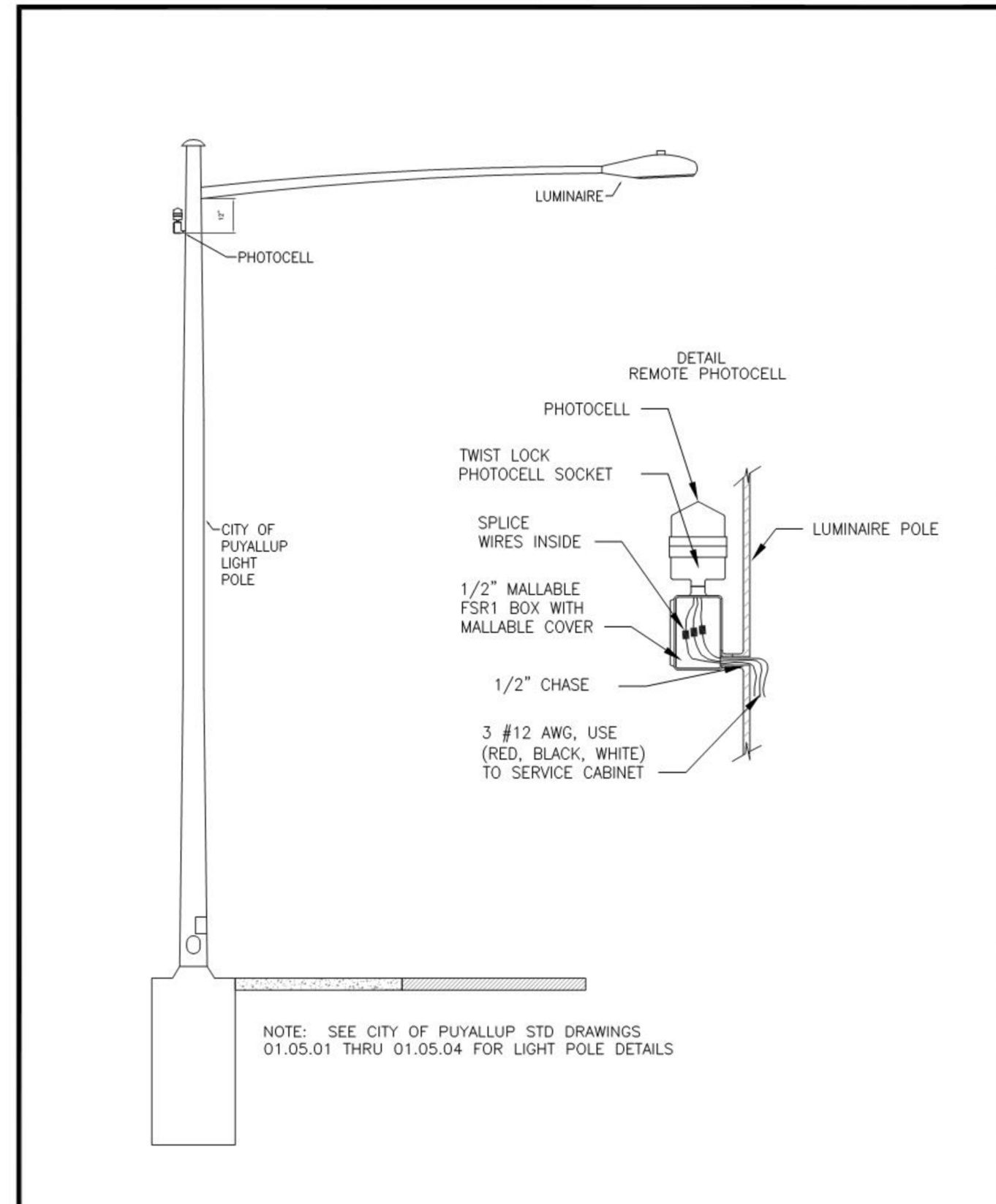
DRAWN BY: AS
CHECKED BY: BH
PROJECT MANAGER: AS

DRAWING No. 2 of 3 TOTAL

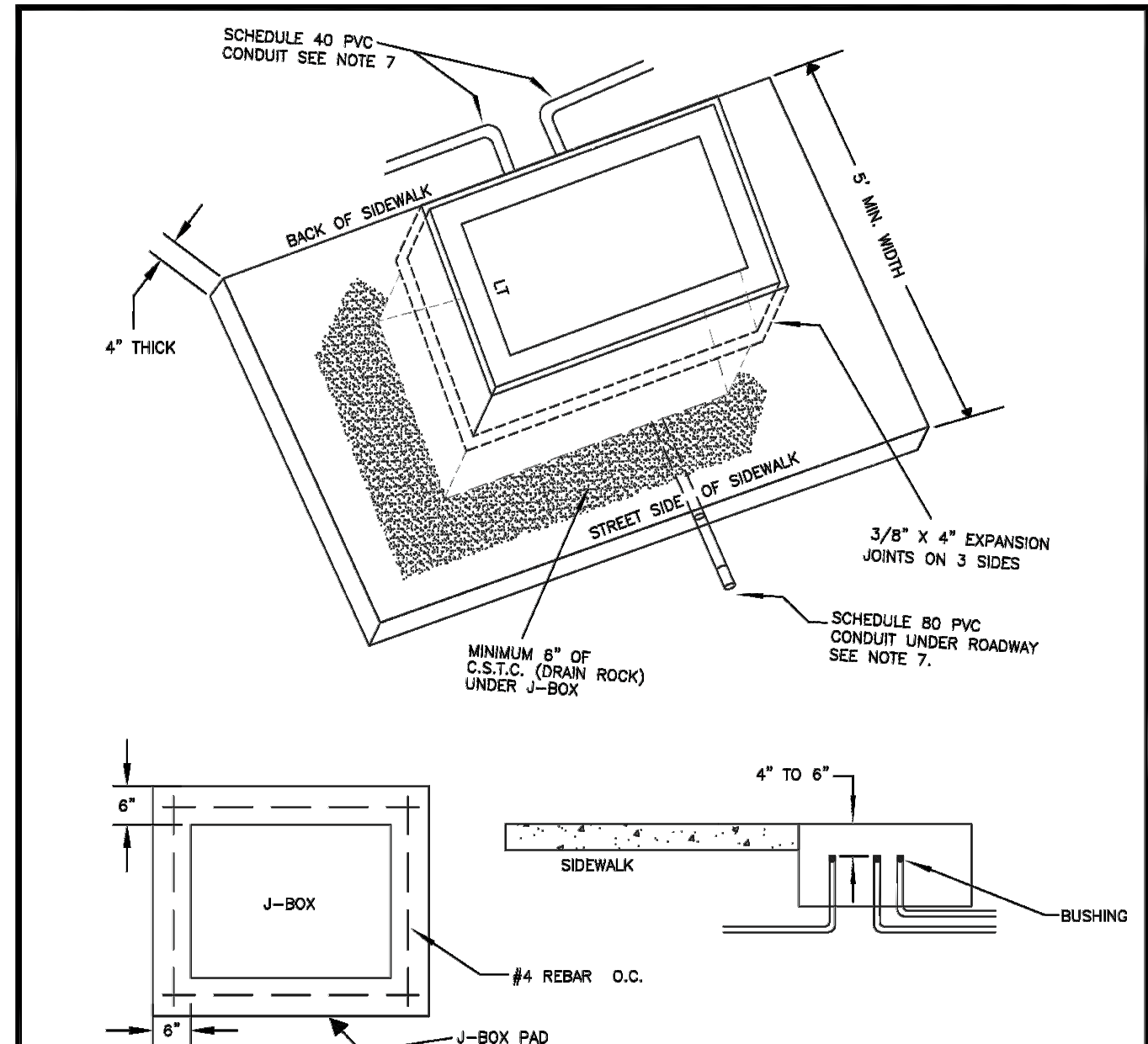
E1.2
DATE: 10/11/2023
SUBMITTAL: PERMIT
PROJECT No. 223-328



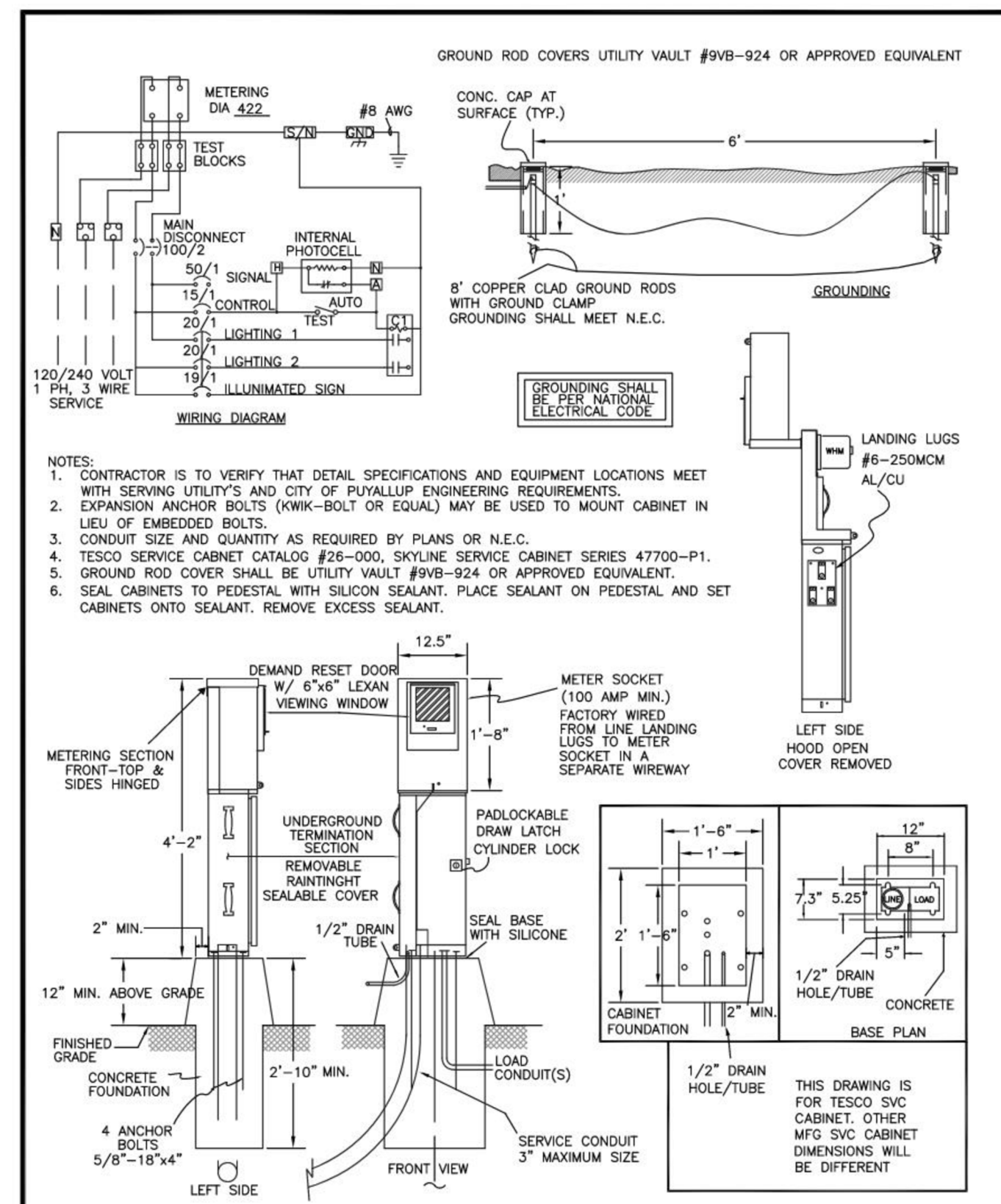
CITY OF PUYALLUP DEVELOPMENT ENGINEERING and PUBLIC WORKS DEPARTMENTS	STREET LIGHT POLE AND BRACKET WIRE SUPPORT AT ARM END			
	DESIGNED BY DM LEWIS-SYBORKA	CHECKED BY LINDA LIAN	APPROVED BY COLLEEN HARRIS	REVISION BY N/A



CITY OF PUYALLUP DEVELOPMENT ENGINEERING and PUBLIC WORKS DEPARTMENTS	REMOTE PHOTOCELL			
	DESIGNED BY LINDA LIAN	CHECKED BY LINDA LIAN	APPROVED BY COLLEEN HARRIS	CITY STANDARD 01.05.10



CITY OF PUYALLUP DEVELOPMENT ENGINEERING and PUBLIC WORKS DEPARTMENTS	JUNCTION BOX			
	DESIGNED BY DM LEWIS-SYBORKA	CHECKED BY LINDA LIAN	APPROVED BY COLLEEN HARRIS	CITY STANDARD 01.06.01



CITY OF PUYALLUP DEVELOPMENT ENGINEERING and PUBLIC WORKS DEPARTMENTS	STREET LIGHT SERVICE METER CABINET FOUNDATION			
	DESIGNED BY DM LEWIS-SYBORKA	CHECKED BY LINDA LIAN	APPROVED BY COLLEEN HARRIS	CITY STANDARD 01.05.05



REUSE OF DOCUMENTS
 THE DRAWINGS AND SPECIFICATIONS CONTAINED HEREIN ARE THE PROPRIETARY, UNPUBLISHED PROPERTY OF BCE ENGINEERS, INC. AND SHALL NOT BE REPRODUCED, COPIED, OR DISCLOSED IN WHOLE OR PART WITHOUT THE WRITTEN PERMISSION OF BCE ENGINEERS, INC.

PUYALLUP DUPLEX STREET LIGHTING
 433 & 409 43RD AV SW
 PUYALLUP, WA 98373

CITY OF PUYALLUP STREET LIGHTING DETAILS

REVISIONS		
NO.	DESCRIPTION	DATE

DRAWN BY: AS
 CHECKED BY: BH
 PROJECT MANAGER: AS

DRAWING No. 3 of 3 TOTAL

APPROVED
 BY _____
 CITY OF PUYALLUP
 ENGINEERING SERVICES
 DATE _____
NOTE: THIS APPROVAL IS VOID AFTER 1 YEAR FROM APPROVAL DATE. THE CITY WILL NOT BE RESPONSIBLE FOR ERRORS AND/OR OMISSIONS ON THESE PLANS. FIELD CONDITIONS MAY DICTATE CHANGES TO THESE PLANS AS DETERMINED BY THE ENGINEERING SERVICE MANAGER.

E1.3
 DATE: 10/11/2023
 SUBMITTAL: PERMIT
 PROJECT No. 223-328