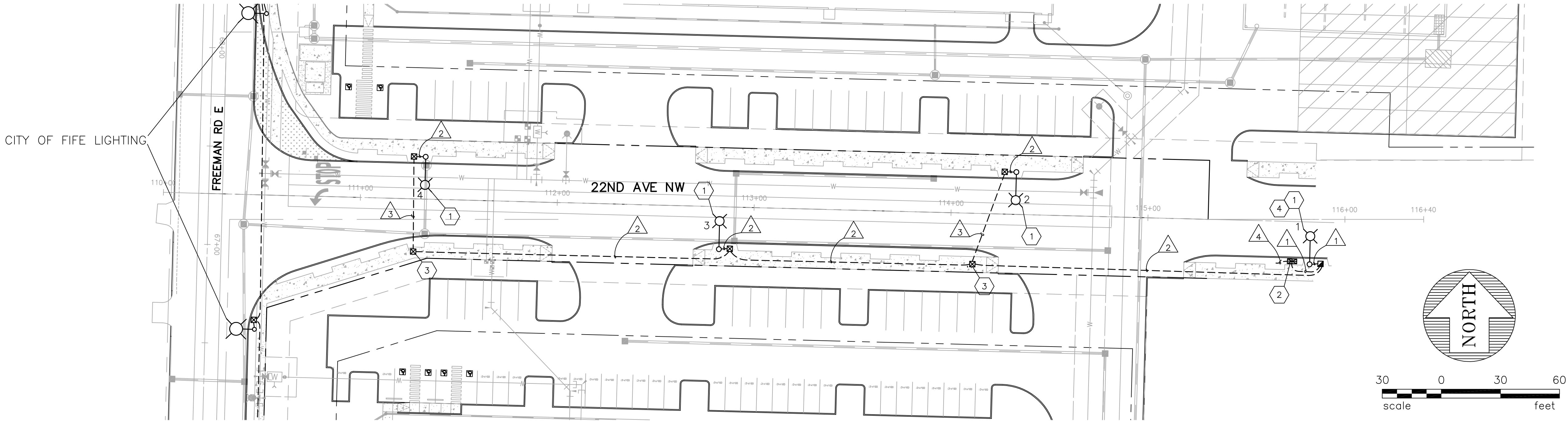


PORTION OF SECTION 20, TOWNSHIP 20 N, RANGE 4 EAST, W.M.,
CITY OF PUYALLUP, WASHINGTON



WIRING SCHEDULE

RUN NO.	CONDUIT	CONDUCTORS	REMARKS
1	2" SCH 40 PVC	2-#8, 1-#8 GROUND, 3-#12 PHOTO	
2	2" SCH 40 PVC	2-#8, 1-#8 GROUND	
3	2" SCH 80 PVC	2-#8, 1-#8 GROUND	

ALL PVC CONDUITS CONTAINING CONDUCTORS SHALL HAVE 1-#8 BARE GROUND WIRE

LUMINAIRE SCHEDULE

LUM. NO.	CIRCUIT NO.	LOCATION	OFFSET (FEET)	LAMP WATTAGE	DAVIT ARM (FEET)	MOUNTING HGT. (FT.)
1	A	22ND AVE NW 115+82.5	21.5' RT	130W LED	12'	30'
2	A	22ND AVE NW 114+32.5	21.5' LT	130W LED	12'	30'
3	A	22ND AVE NW 112+82.5	21.5' RT	130W LED	12'	30'
4	A	22ND AVE NW 111+32.5	21.5' LT	130W LED	12'	30'

LUMINAIRE STANDARDS SHALL BE INSTALLED 3.5' FROM FACE OF CURB

CONSTRUCTION NOTES

- 1 INSTALL CONCRETE FOUNDATION, TYPE 1 JUNCTION BOX, STEEL LUMINAIRE STANDARD WITH 12' ARM AND 130 WATT LED GE EVOLVE FIXTURE (ERS2-E-0-HX-EX-5-40), OR APPROVED EQUAL, PER LUMINAIRE SCHEDULE AND CITY OF PUYALLUP STANDARD DETAILS 01.05.01, 02, 03, 04, 06 AND 07. INSTALL SHORTING CAP ON NEW LUMINAIRES WITH NO PHOTOCELL.
- 2 CONSTRUCT FOUNDATION AND INSTALL NEW STREET LIGHT SERVICE CABINET PER CITY OF PUYALLUP STANDARD DETAIL 01.05.05. COORDINATE WITH POWER UTILITY FOR POWER HOOK-UP.
- 3 INSTALL NEW TYPE 1 OR TYPE 2 JUNCTION BOX PER CITY OF PUYALLUP STANDARD DETAIL 01.06.01.
- 4 INSTALL PHOTOCELL ON LUMINAIRE PER CITY OF PUYALLUP STANDARD DETAIL 01.05.10.

GENERAL NOTES

1. ALL WORK SHALL BE IN ACCORDANCE WITH THESE PLANS, THE CITY OF PUYALLUP CONSTRUCTION STANDARDS, THE WASHINGTON STATE DEPARTMENT OF TRANSPORTATION (WSDOT) STANDARD SPECIFICATIONS FOR ROAD, BRIDGE AND MUNICIPAL CONSTRUCTION (CURRENT EDITION), AND THE WSDOT STANDARD PLANS.
1. THE LOCATIONS OF UTILITIES AND FEATURES SHOWN ARE APPROXIMATE AND SHALL BE VERIFIED IN THE FIELD BY THE CONTRACTOR PRIOR TO CONSTRUCTION START.
2. ALL WORK SHALL BE CONSISTENT WITH UTILITY AGENCY REQUIREMENTS. THE CONTRACTOR SHALL COORDINATE WITH AFFECTED UTILITY AGENCIES THROUGHOUT THE PROJECT. THE CONTRACTOR SHALL BE RESPONSIBLE FOR ANY DAMAGE TO UTILITIES.
3. CONDUIT AND JUNCTION BOX LOCATIONS ARE SHOWN FOR ILLUSTRATIVE PURPOSES. ACTUAL LOCATIONS SHALL BE DETERMINED BY THE CONTRACTOR IN THE FIELD WITH DIRECTION FROM THE CITY.
4. CONTRACTOR SHALL COORDINATE WITH THE CITY SIGNAL/ILLUMINATION TECHNICIAN AT 253.405.4390 PRIOR TO CONSTRUCTION.

LEGEND

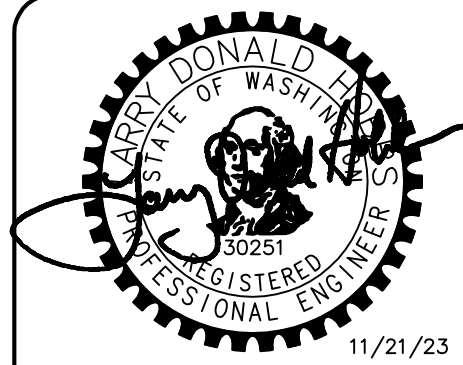
EXISTING	NEW	
		LED LUMINAIRE, ARM AND ALUMINUM DAVIT STYLE POLE
		PVC CONDUIT (SEE WIRING SCHEDULE)
		TYPE 1 LOCKING JUNCTION BOX
		TYPE 2 LOCKING JUNCTION BOX
		WIRING NOTE
		CONSTRUCTION NOTE

CAUTION:

LOCATION OF EXISTING UTILITIES SHOWN IS APPROXIMATE AND MAY NOT BE ACCURATE OR ALL INCLUSIVE. IT IS THE CONTRACTOR'S RESPONSIBILITY TO POTHOLE AS REQUIRED AND FIELD VERIFY LOCATION OF UTILITIES PRIOR TO PROCEEDING WITH CONSTRUCTION.

UNDERGROUND UTILITY NOTE:

YOU MUST CALL 811 NOT LESS THAN 72 HOURS BEFORE BEGINNING EXCAVATION WHERE ANY UNDERGROUND UTILITIES MAY BE LOCATED. FAILURE TO DO SO COULD MEAN BEARING SUBSTANTIAL REPAIR COSTS (UP TO THREE TIMES THE COST OF REPAIRS TO THE SERVICE).



Traffex
NORTHWEST
TRAFFIC EXPERTS
11410 NE 124th St., #590, Kirkland, WA 98034
Phone: 425.522.4118

FREEMAN LOGISTICS

PUYALLUP, WA

FOR:
CRP/VDC FREEMAN LOGISTICS, L.L.C.
11411 NE 124TH ST, SUITE 190
KIRKLAND, WA 98034

PROJECT NO.: FO210 23

DRAWN BY: LDH

ISSUE DATE: 11-21-23

SHEET REV.:

22ND AVE NW
ILLUMINATION
PLAN

IL01

SHEET 1 OF 1