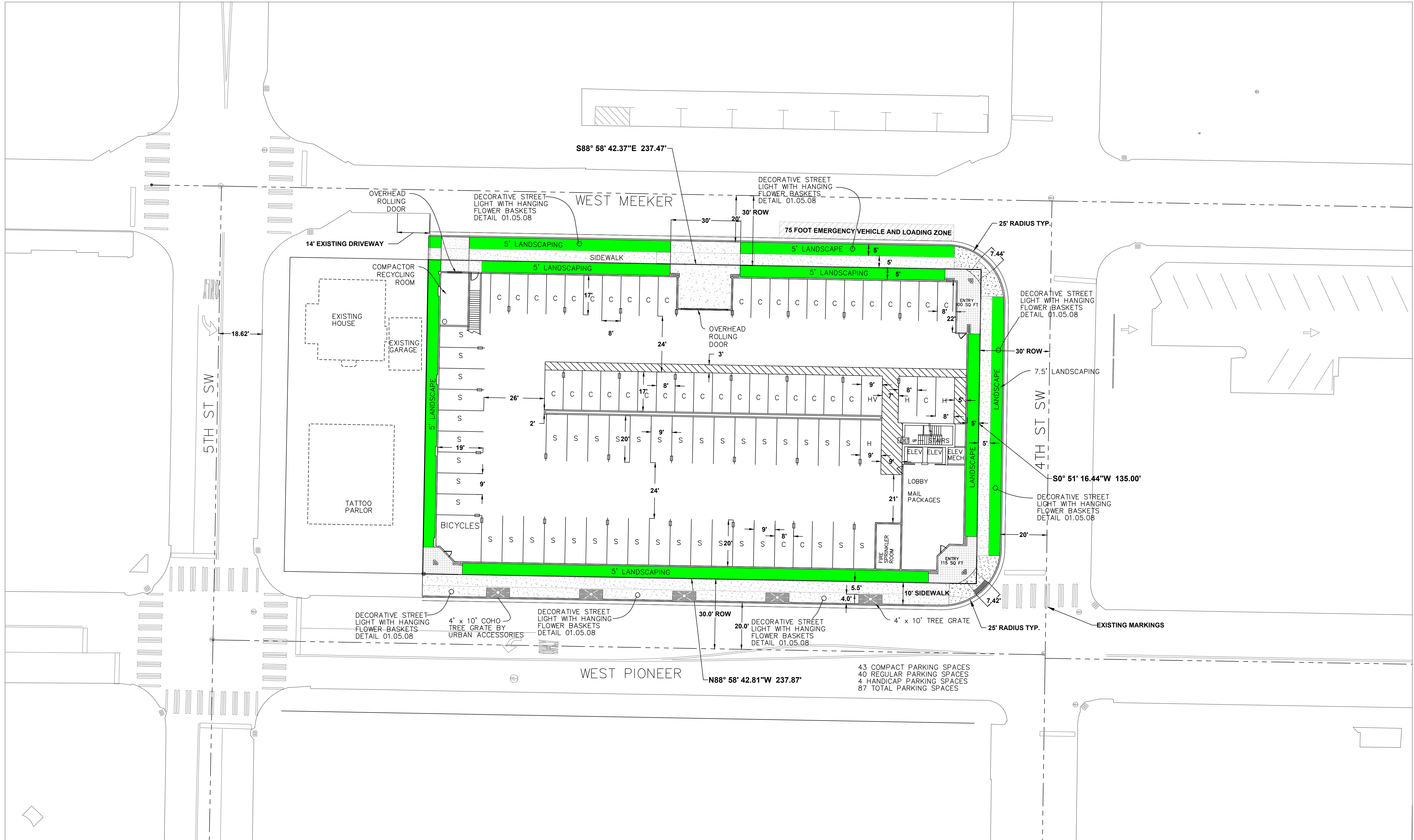
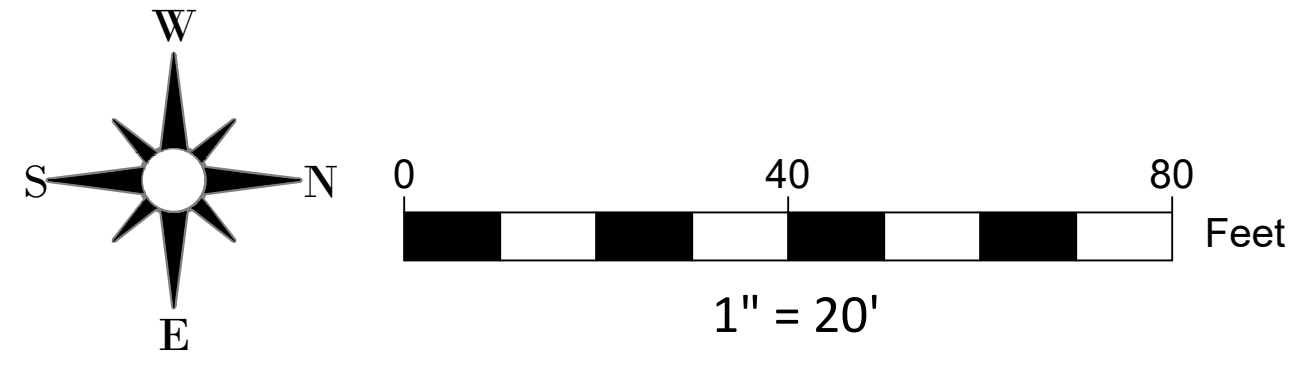


Bell Property

Section 15, Township 20 N, Range 4 E, Willamette Meridian, Pierce County, Washington

Parking Floor Dimensions



NO.	REVISION	DATE

JOB NO.	DATE
3856	12/19/2021
DESIGNED BY/PEG	BRAWN BY/TRE/JOR GREEN
CHECKED BY/JUN JOB	
APPROVED BY/PAUL GREEN	

AZURE GREEN
CONSULTANTS
+ feasibility + planning + engineering + surveying
409 East Pioneer, Suite A - Puyallup, WA 98722 phone: 253.770.3144 / fax: 253.770.3142

Parking Floor Dimensions
Bell Property
Azure Green Consultants
409 East Pioneer, Puyallup WA, 98372
Phone 253.770.3144

43 COMPACT PARKING SPACES
40 REGULAR PARKING SPACES
4 HANDICAP PARKING SPACES
87 TOTAL PARKING SPACES