

PROJECT:
**FREEMAN
ROAD
LOGISTICS**

LOCATION:
**FREEMAN ROAD
PUYALLUP, WA**

CLIENT:
**VECTOR
DEVELOPMENT CO.
11335 NE 122ND WAY,
SUITE 105
KIRKLAND, WA 98034**

PLANT LEGEND

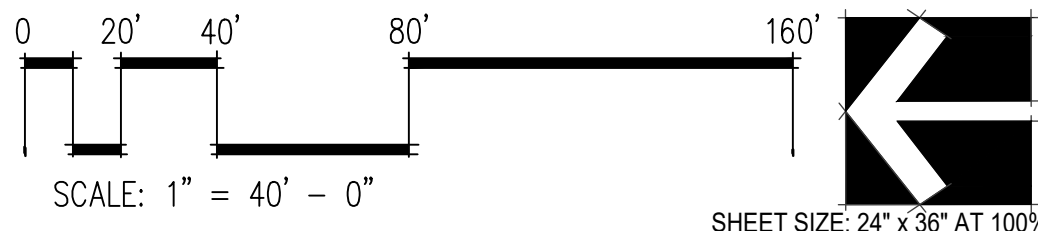
SYMBOL	COMMON NAME
	STREET TREES (CLASS III-IV) BOULEVARD LINDEN GREEN PILLAR PIN OAK MUSHASHINO ZELCOVA STREET KEEPER HONEYLOCUST
	MED / LARGE DECIDUOUS TREES (CLASS III-IV) AUTUMN GOLD GINKGO EMERALD QUEEN MAPLE GREENSPIRE LINDEN JEFFERSON ELM SYCAMORE MAPLE
	COLUMNAR DECIDUOUS TREES (CLASS II) HORNBEAM PRINCETON SENTRY GINKGO PURPLE DAWYCK BEECH
	EVERGREEN TREES (CLASS III-IV) AUSTRIAN PINE DOUGLAS FIR SERBIAN SPRUCE WEeping ALASKA CEDAR WESTERN RED CEDAR
	EVERGREEN HEDGE ARBORVITAE HICKS YEW SCHIPKA LAUREL
	EVERGREEN SHRUBS BOXWOOD DAVIDS VIBURNUM GOSHIKI OSMANTHUS HEAVENLY BAMBOO HICKS YEW MUGO PINE OREGON GRAPE OTTO LUYKEN LAUREL PORTUGAL LAUREL RED TIPS HONEYSUCKLE SPREADING YEW STRAWBERRY TREE WHITE ROCKROSE
	DECIDUOUS SHRUBS ANTHONY WATERER SPIREA JAPANESE BARBERRY NINEBARK REDTWIG DOGWOOD SHRUBBY CINQUEFOIL SNOWBERRY WINGED EUONYMUS
	GROUNDCOVER BIGROOT CRANESBILL CORAL BEAUTY COTONEASTER DWARF REDTWIG DOGWOOD KINNIKINNICK
	EROSION CONTROL HYDROSEED

NOTE:
REFER TO SHEET L-3 FOR FULL PLANT SCHEDULE
WITH SIZES.

LANDSCAPE CALCULATIONS

TOTAL PAVED AREA:	154,300 S.F.
REQUIRED PARKING LOT LANDSCAPE AREA:	15,430 S.F. 10%
PROVIDED PARKING LOT LANDSCAPE AREA:	23,525 S.F.

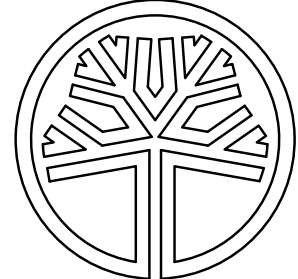
LANDSCAPE PLAN



NO.	DATE	REVISION
11.23.2020	SEPA	
19.12.2022	SEPA RESUBMITTAL	
11.13.2023	SEPA RESUBMITTAL	

DESIGNED CB
DRAWN CB
CHECKED CB

PROFESSIONAL SEAL



STATE OF
WASHINGTON
REGISTERED
PROFESSIONAL ARCHITECT
William A. Brown
WILLIAM A. BROWN
CERTIFICATE NO. 501

DATE 07.26.2021

PROJECT NO. 202116

TITLE

**PRELIMINARY
LANDSCAPE
PLAN**

SHEET NUMBER

L-1

PROJECT:
**FREEMAN
ROAD
LOGISTICS**

LOCATION:
**FREEMAN ROAD
PUYALLUP, WA**

CLIENT:
**VECTOR
DEVELOPMENT CO.
11335 NE 122ND WAY,
SUITE 105
KIRKLAND, WA 98034**

PLANT LEGEND

SYMBOL	COMMON NAME
	STREET TREES (CLASS III-IV) BOULEVARD LINDEN GREEN PILLAR PIN OAK MUSHASHINO ZELCOVA STREET KEEPER HONEYLOCUST
	MED / LARGE DECIDUOUS TREES (CLASS III-IV) AUTUMN GOLD GINKGO EMERALD QUEEN MAPLE GREENSPIRE LINDEN JEFFERSON ELM SYCAMORE MAPLE
	COLUMNAR DECIDUOUS TREES (CLASS II) HORNBEAM PRINCETON SENTRY GINKGO PURPLE DAWYCK BEECH
	EVERGREEN TREES (CLASS III-IV) AUSTRIAN PINE DOUGLAS FIR SERBIAN SPRUCE WEEPING ALASKA CEDAR WESTERN RED CEDAR
	EVERGREEN HEDGE ARBORVITAE HICKS YEW SCHIPKA LAUREL
	EVERGREEN SHRUBS BOXWOOD DAVIDS VIBURNUM GOSHIKI OSMANTHUS HEAVENLY BAMBOO HICKS YEW MUGO PINE OREGON GRAPE OTTO LUYKEN LAUREL PORTUGAL LAUREL RED TIPS HONEYSUCKLE SPREADING YEW STRAWBERRY TREE WHITE ROCKROSE
	DECIDUOUS SHRUBS ANTHONY WATERER SPIREA JAPANESE BARBERRY NINEBARK REDTWIG DOGWOOD SHRUBBY CINQUEFOIL SNOWBERRY WINGED EUONYMUS
	GROUNDCOVER BIGROOT CRANESBILL CORAL BEAUTY COTONEASTER DWARF REDTWIG DOGWOOD KINKINNICK

NOTE:
REFER TO SHEET L-3 FOR FULL PLANT SCHEDULE
WITH SIZES.

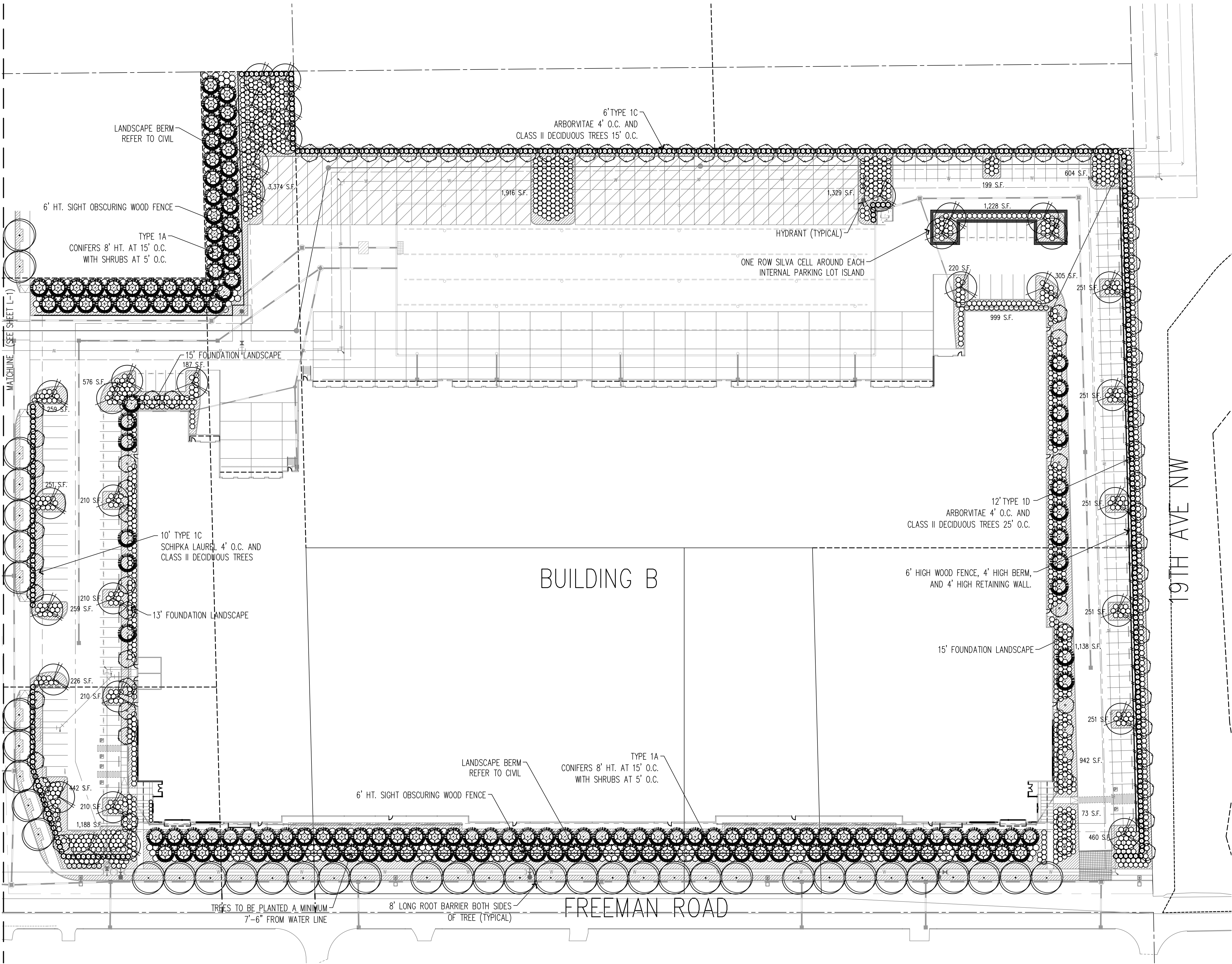
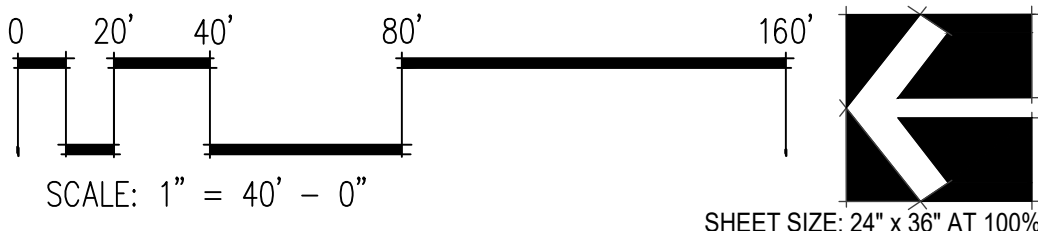
LANDSCAPE CALCULATIONS

24" X 48" SILVA CELL

LANDSCAPE CALCULATIONS

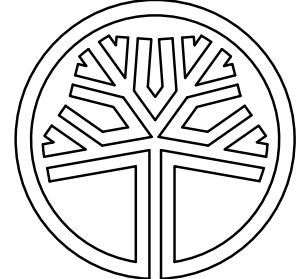
TOTAL PAVED AREA: 166,776 S.F.
REQUIRED PARKING LOT LANDSCAPE AREA: 16,678 S.F. 10%
PROVIDED PARKING LOT LANDSCAPE AREA: 17,132 S.F.

LANDSCAPE PLAN



NO.	DATE	REVISION
11.23.2020	SEPA	
19.12.2022	SEPA RESUBMITTAL	
11.13.2023	SEPA RESUBMITTAL	

DESIGNED CB
DRAWN CB
CHECKED CB
PROFESSIONAL SEAL



DATE 07.26.2021
PROJECT NO. 202116
TITLE

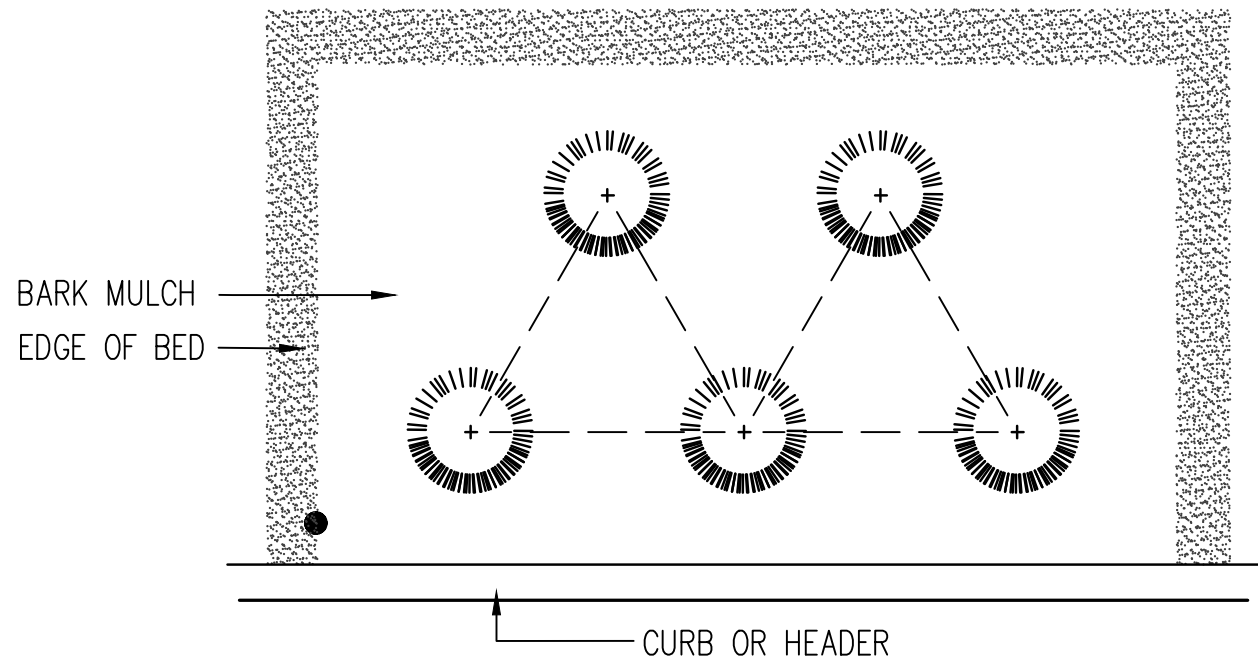
**PRELIMINARY
LANDSCAPE
PLAN**

SHEET NUMBER
L-2

PROJECT:
**FREEMAN
ROAD
LOGISTICS**

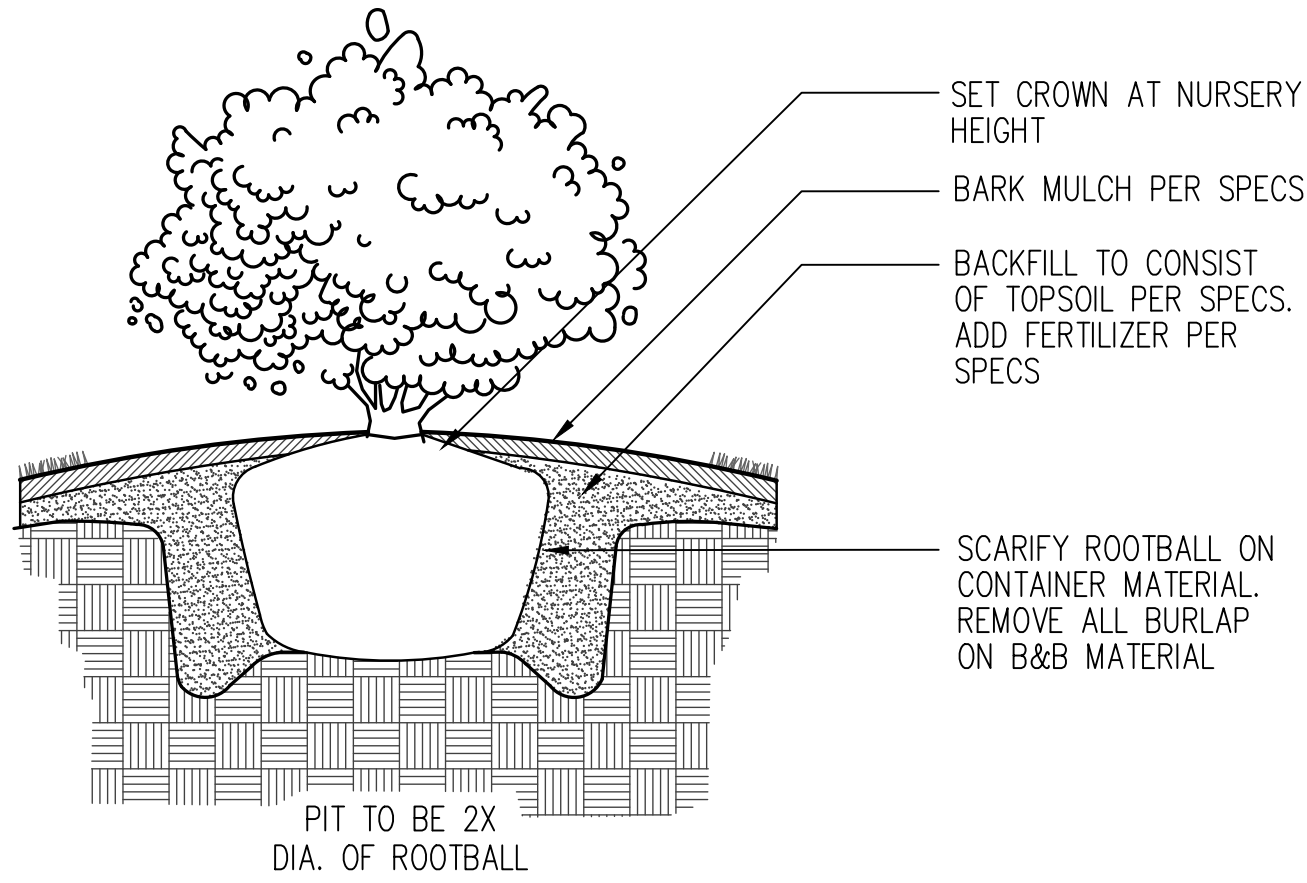
LOCATION:
**FREEMAN ROAD
PUYALLUP, WA**

CLIENT:
**VECTOR
DEVELOPMENT CO.
11335 NE 122ND WAY,
SUITE 105
KIRKLAND, WA 98034**

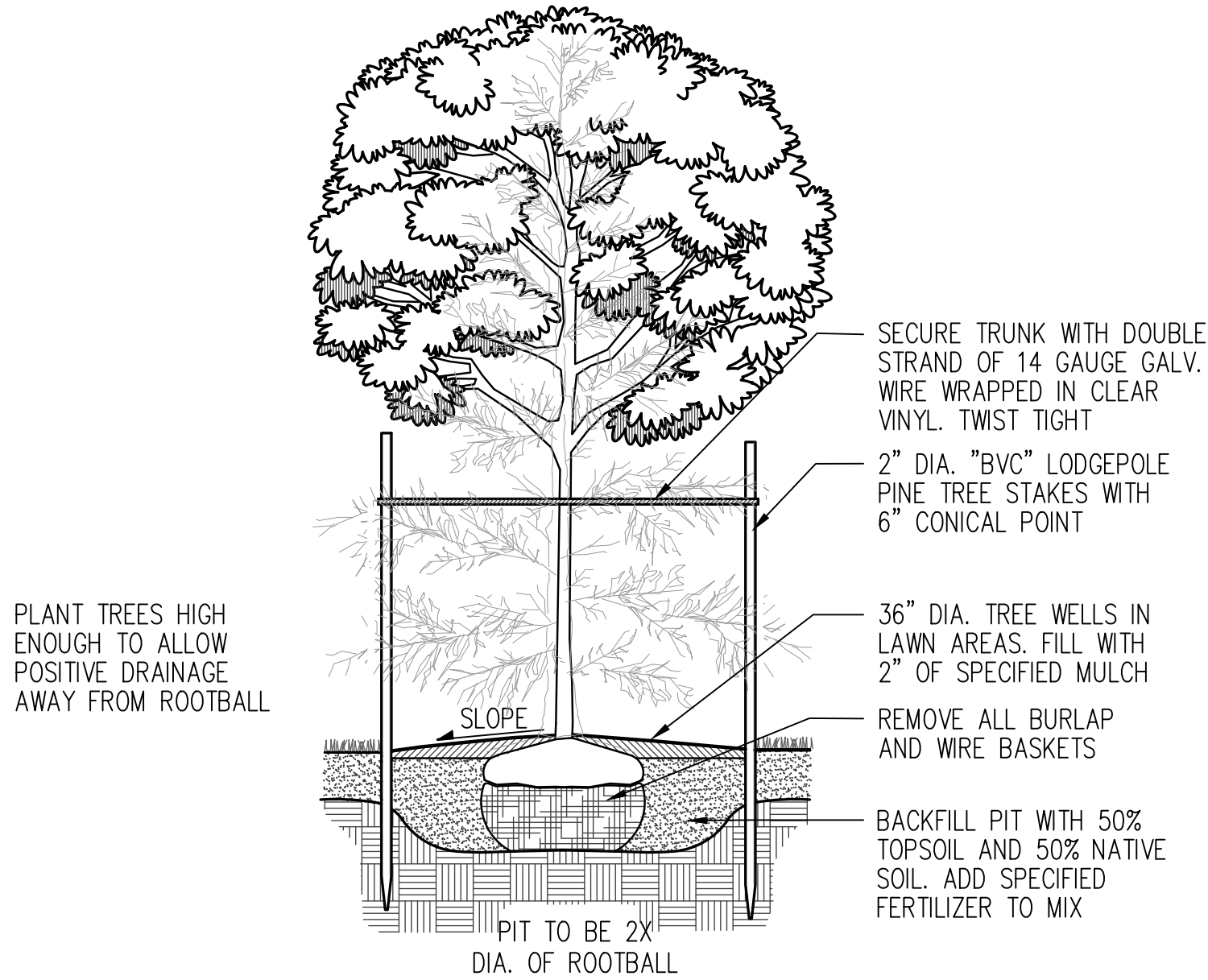


NOTE: SPACING TO BE TRIANG. PER DISTANCE SHOWN ON PLANT SCHEDULE

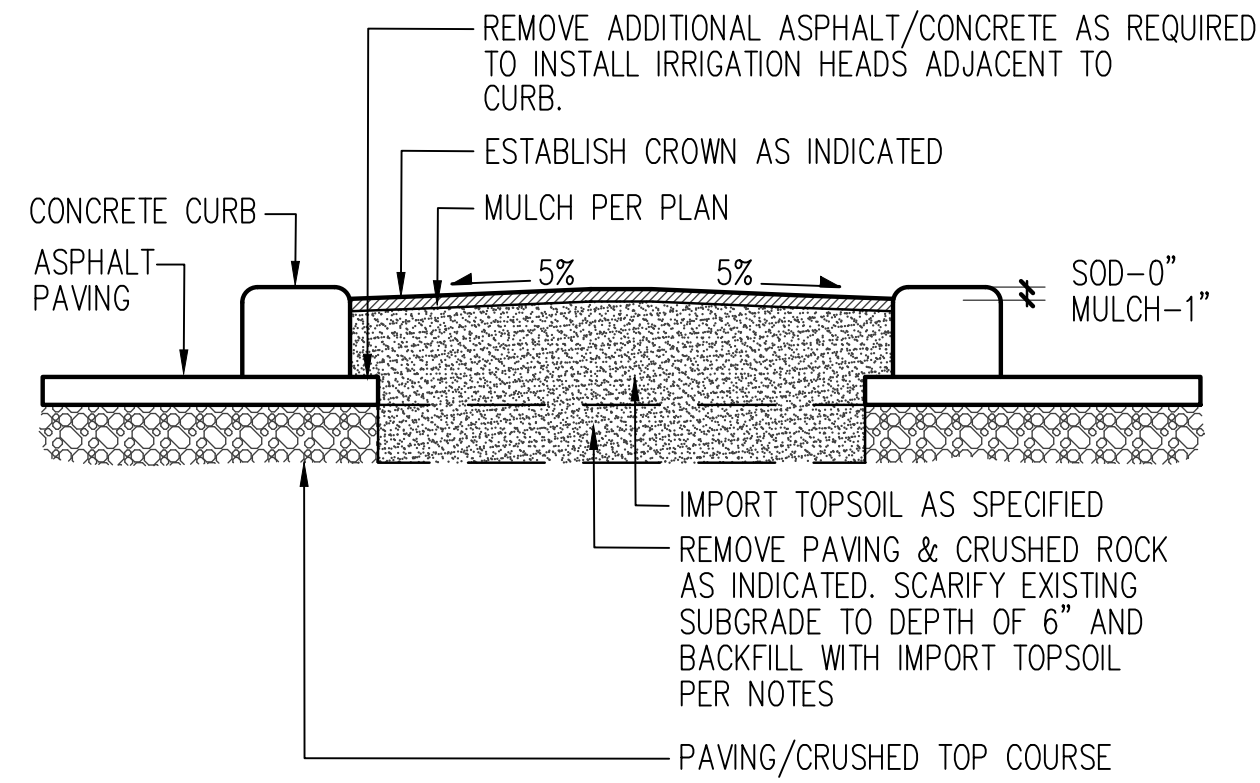
1 GROUND COVER SPACING
NTS



2 SHRUB PLANTING
NTS



3 TREE STAKING
NTS



4 LANDSCAPE ISLAND
NTS

PLANT SCHEDULE

SYMBOL	BOTANICAL NAME / COMMON NAME	QTY	SIZE	REMARKS
	STREET TREES (CLASS III-IV)			
	GLEDTISIA TRIACANTHOS 'DRAVES' / STREET KEEPER HONEYLOCUST	TBD	MIN. 1" CAL.	B & B
	QUERCUS PALUSTRIS 'GREEN PILLAR' GREEN PILLAR PIN OAK	TBD	MIN. 1" CAL.	B & B
	TILIA AMERICANA 'BOULEVARD' / BOULEVARD LINDEN	TBD	MIN. 1" CAL.	B & B
	ZELCOVA SERRATA 'MUSASHINO' / MUSASHINO COMUNAR ZELCOVA	TBD	MIN. 1" CAL.	B & B
	MEDIUM DECIDUOUS TREES (CLASS III-IV)			
	ACER PLATANOIDES 'EMERALD QUEEN' / EMERALD QUEEN MAPLE	TBD	MIN. 1-1/2" CAL.	B & B
	ACER PSEUDOPLATANUS / SYCAMORE MAPLE	TBD	MIN. 1-1/2" CAL.	B & B
	GINKGO BILOBA 'AUTUMN GOLD' / AUTUMN GOLD GINKGO	TBD	MIN. 1-1/2" CAL.	B & B
	TILIA CORDATA 'GREENSPIRE' / GREENSPIRE LINDEN	TBD	MIN. 1-1/2" CAL.	B & B
	COLUMNAR DECIDUOUS TREES (CLASS III-IV)			
	CARPINUS BETULUS 'FRANS FONTAINE' / HORNBEAM	TBD	MIN. 1-1/2" CAL.	B & B
	AMELANCHIER X G. 'AUTUMN BRILLANCE' / SERVICEBERRY	TBD	MIN. 1-1/2" CAL.	B & B
	FAGUS SYLVATICA 'DAWYCK' / DAWYCK BEECH	TBD	MIN. 1-1/2" CAL.	B & B
	EVERGREEN TREES (CLASS II-IV)			
	CHAMAECYPARIS NOOTKATENSIS 'PENDULA' / ALASKA CEDAR	TBD	MIN. 5' HT.	B & B
	PICEA OMORIKA / SERBIAN SPRUCE	TBD	MIN. 5' HT.	B & B
	PINUS NIGRA / AUSTRIAN PINE	TBD	MIN. 5' HT.	B & B
	PSEUDOTSUGA MENZIESII / DOUGLAS FIR	TBD	MIN. 8' HT.	B & B
	EVERGREEN HEDGE			
	PRUNUS L. 'SCHIPKAENSIS' / SCHIPKA LAUREL	TBD	MIN. 48" HT.	B & B
	TAXUS MEDIA X 'HICKSI' / HICKS YEW	TBD	MIN. 48" HT.	B & B
	THUJA OCCIDENTALIS 'FASTIGIATA' / ARBORVITAE	TBD	MIN. 48" HT.	B & B

PLANT SCHEDULE

SYMBOL	BOTANICAL NAME / COMMON NAME	QTY	SIZE	REMARKS
	EVERGREEN SHRUBS			
	ARBUSUS UNEDO 'COMPACTA' / STRAWBERRY TREE	TBD	5 GAL.	
	AUCUBA JAPONICA 'ROZANNIE' / JAPANESE AUCUBA	TBD	5 GAL.	
	BUXUS S. 'GRAHAM BLANDY' / ENGLISH BOXWOOD	TBD	5 GAL.	
	CISTUS X HYBRIDUS / WHITE ROCKROSE	TBD	5 GAL.	
	LONIERCA N. 'RED TIPS' / RED TIPS HONEYSUCKLE	TBD	5 GAL.	
	MAHONIA AQUIFOLIUM 'COMPACTA' / OREGON GRAPE	TBD	5 GAL.	
	MYRICA CALIFORNICA / PACIFIC WAX MYRTLE	TBD	5 GAL.	
	NANDINA D. 'SIENNA SUNRISE' / HEAVENLY BAMBOO	TBD	5 GAL.	
	OSMANTHUS H. 'GOSHIKI' / VARIEGATED OSMANTHUS	TBD	5 GAL.	
	PRUNUS L. 'OTTO LUYKEN' / OTTO LUYKEN LAUREL	TBD	5 GAL.	
	PRUNUS LUSTANICA / PORTUGAL LAUREL	TBD	5 GAL.	
	TAXUS X MEDIA 'DENSIFORMIS' / SPREADING YEW	TBD	5 GAL.	
	VIBURNUM DAVIDII / DAVID'S VIBURNUM	TBD	5 GAL.	
	VIBURNUM T. 'SPRING BOUQUET' / SPRING BOUQUET	TBD	5 GAL.	
	DECIDUOUS SHRUBS			
	BERBERIS T. ATROPURPUREA 'PYGMY RUBY' / JAPANESE BARBERRY	TBD	5 GAL.	
	CORNUS SERICEA 'BAILEY' / REDTWIG DOGWOOD	TBD	5 GAL.	
	EUONYMUS ALATUS 'COMPACTUS' / WINGED EUONYMUS	TBD	5 GAL.	
	PHYSOCARPUS O. 'SUMMER WINE' / NINEBARK	TBD	5 GAL.	
	POTENTILLA 'GOLDFINGER' / SHRUBBY CINQUEFOIL	TBD	5 GAL.	
	SPIRAEA X BUMALDA 'ANTHONY WATERER' / SPIREA	TBD	5 GAL.	
	SYMPHORICARPOS ALBUS / SNOWBERRY	TBD	5 GAL.	
	ORNAMENTAL GRASSES			
	CALAMAGROSTIS X ACUTIFLORA 'KARL FOERSTER' / FEATHER REED GRASS	TBD	1 GAL.	24" O.C.
	HELICTOTRICHON SEMPERVIRENS / BLUE OAT GRASS	TBD	1 GAL.	24" O.C.
	GROUNDCOVER			
	ARCHTOSTAPHYLOS UVA-URSI / KINNIKINNICK	TBD	1 GAL.	36" O.C.
	CORNUS SERICA 'KELSY' / DWARF REDTWIG DOGWOOD	TBD	1 GAL.	24" O.C.
	COTONEASTER D. 'CORAL BEAUTY' / COTONEASTER	TBD	1 GAL.	36" O.C.
	GERANIUM MACRORRHIZUM / BIGROOT CRANESBILL	TBD	1 GAL.	24" O.C.
	EROSION CONTROL SEED MIX:			
	45% FESTUCA ARUNDINACEA VAR. / DWARF TALL FESCUE		HYDROSEED	SEED-80 LBS / ACRE
	30% LOLIUM PERENNE VAR. BARCLAY / DWARF PERENNIAL RYE (BARCLAY)			MULCH-1,500 LBS / ACRE
	20% FESTUCA RUBRA / RED FESCUE			
	5% AGROSTIS TENUIS 'HIGHLAND STRAIN' / COLONIAL BENTGRASS			

LANDSCAPE NOTES

- ALL NEW PLANTING BEDS TO RECEIVE A MINIMUM 18" OF TOPSOIL. INSTALLED IN THREE LIFTS OF 6" DEPTH, WITH THE FIRST LIFT ROTOTILLED INTO THE SUBGRADE TO A MINIMUM DEPTH OF 8". TOPSOIL TO CONSIST OF 40% BY VOLUME NATIVE LOAM SOIL, 40% BY VOLUME SAND, AND 20% BY VOLUME COMPOST. TOPSOIL TO BE UNIFORMLY AMENDED FOR FERTILITY AND PH AS RECOMMENDED BY A CURRENT SOILS TEST PROVIDED BY A APPROVED SOIL TEST LABORATORY FOR NEW LANDSCAPE PLANTING.
- ALL NEW PLANTER BEDS TO HAVE MEDIUM/FINE (3" MINUS) BARK MULCH INSTALLED TO A MINIMUM DEPTH OF 2". MAINTAIN A 6" MULCH FREE RING AROUND TRUNKS OF ALL TREES AND SHRUBS.
- GROUNDCOVER TO EXTEND UNDER ALL DECIDUOUS TREE CANOPIES AT THE SPECIFIED SPACING TO PROVIDE COMPLETE COVERAGE IN ALL PLANTING BEDS SHOWN TO RECEIVE GROUNDCOVER. GROUNDCOVER BENEATH EVERGREEN TREES TO MAINTAIN A 3' CLEARANCE FROM BASE OF TREE.
- TREES TO MAINTAIN A MINIMUM 5' CLEARANCE FROM FIRE HYDRANTS, 7.5' FROM WATER AND SEWER LINES, 7.5' FROM DRIVEWAYS AND BUILDINGS (TYPE I AND TYPE II), 10' FROM UTILITY POLES AND SIGNS, 30' FROM INTERSECTIONS (FACE OF CURB) AND STREET SIGNS (LEADING SIDE). SHRUBS TO MAINTAIN A MINIMUM 3' CLEARANCE FIRE HYDRANTS, BACKFLOW DEVICES, AND METERS.
- ALL PLANT MATERIAL HAS BEEN SELECTED TO BE DROUGHT TOLERANT. SUBSTITUTIONS IF REQUIRED TO ALSO BE DROUGHT TOLERANT, BE OF THE SAME GENERAL CHARACTER OF PLANT SUBSTITUTED, AND TO BE APPROVED BY LANDSCAPE ARCHITECT.
- ALL NEW PLANTING TO BE FERTILIZED WITH STARTER FERTILIZER 2-4-2, OR APPROVED EQUAL, APPLIED AT MANUFACTURERS RECOMMENDED RATE. TREES AND SHRUBS TO BE FERTILIZED WITH AGSAFE 20-10-5, 21 GRAM PLANT TABS, APPLIED AT MANUFACTURERS RECOMMENDED RATE.
- LANDSCAPE DRAWINGS ARE BASED ON THE SITE PLANS PREPARED BY SYNTHESIS ARCHITECTS PLLC. IMMEDIATELY NOTIFY LANDSCAPE ARCHITECT OF ANY FIELD CHANGES TO THE SITE PLAN THAT MAY REQUIRE ADJUSTMENT OF DESIGN.
- REFER TO CIVIL ENGINEERING DRAWINGS FOR GRADING AND DRAINAGE INFORMATION. IMMEDIATELY NOTIFY LANDSCAPE ARCHITECT ON ANY ADVERSE DRAINAGE CONDITIONS WHICH MAY AFFECT HEALTH OF PLANT MATERIAL.
- ALL TREES IN PLANTER STRIPS AND TREES WITHIN 4' OF SIDEWALK TO HAVE ROOT BARRIER INSTALLED MEETING CITY OF PUYALLUP STANDARDS. 24" DEEP PANELS A MINIMUM 8' LENGTH CENTERED ON TREE ON SIDEWALK SIDE OF TREE.
- WARRANTY ALL PLANTING FOR 1 YEAR FROM FINAL ACCEPTANCE. REPLACE PLANTING THAT HAS DIED OR DYING.
- ALL NEW LANDSCAPE TO BE IRRIGATED WITH A HIGH EFFICIENCY IRRIGATION SYSTEM. EROSION CONTROL HYDROSEED TO HAVE TEMPORARY ABOVE GRADE IRRIGATION. TREES AND SHRUBS WITHIN EROSION CONTROL AREAS TO HAVE DRIP POINT SOURCE EMITTERS. IRRIGATION TO BE PROVIDED WITH A ET ADJUSTED IRRIGATION CONTROLLER WITH A ON SITE ET SENSOR.
- NO IRRIGATION TO BE INSTALLED WITHIN R.O.W. OR FUTURE R.O.W.

NO.	DATE	REVISION
11.23.2020	SEPA	
19.12.2022	SEPA RESUBMITTAL	
11.13.2023	SEPA RESUBMITTAL	

DESIGNED	CB
DRAWN	CB
CHECKED	CB

PROFESSIONAL SEAL



DATE	07.26.2021
PROJECT NO.	202116

TITLE

**LANDSCAPE
DETAILS**

SHEET NUMBER

L-3