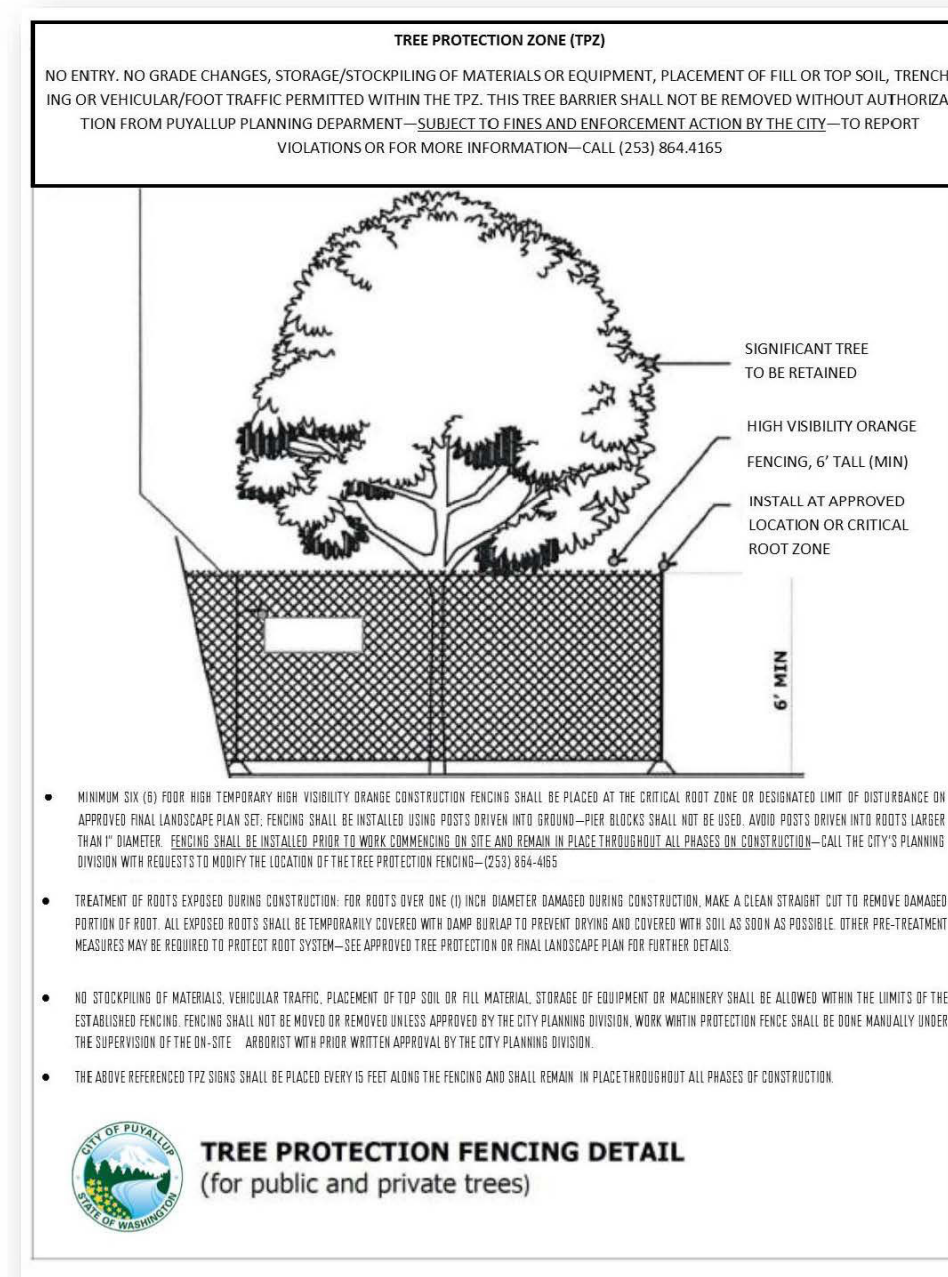


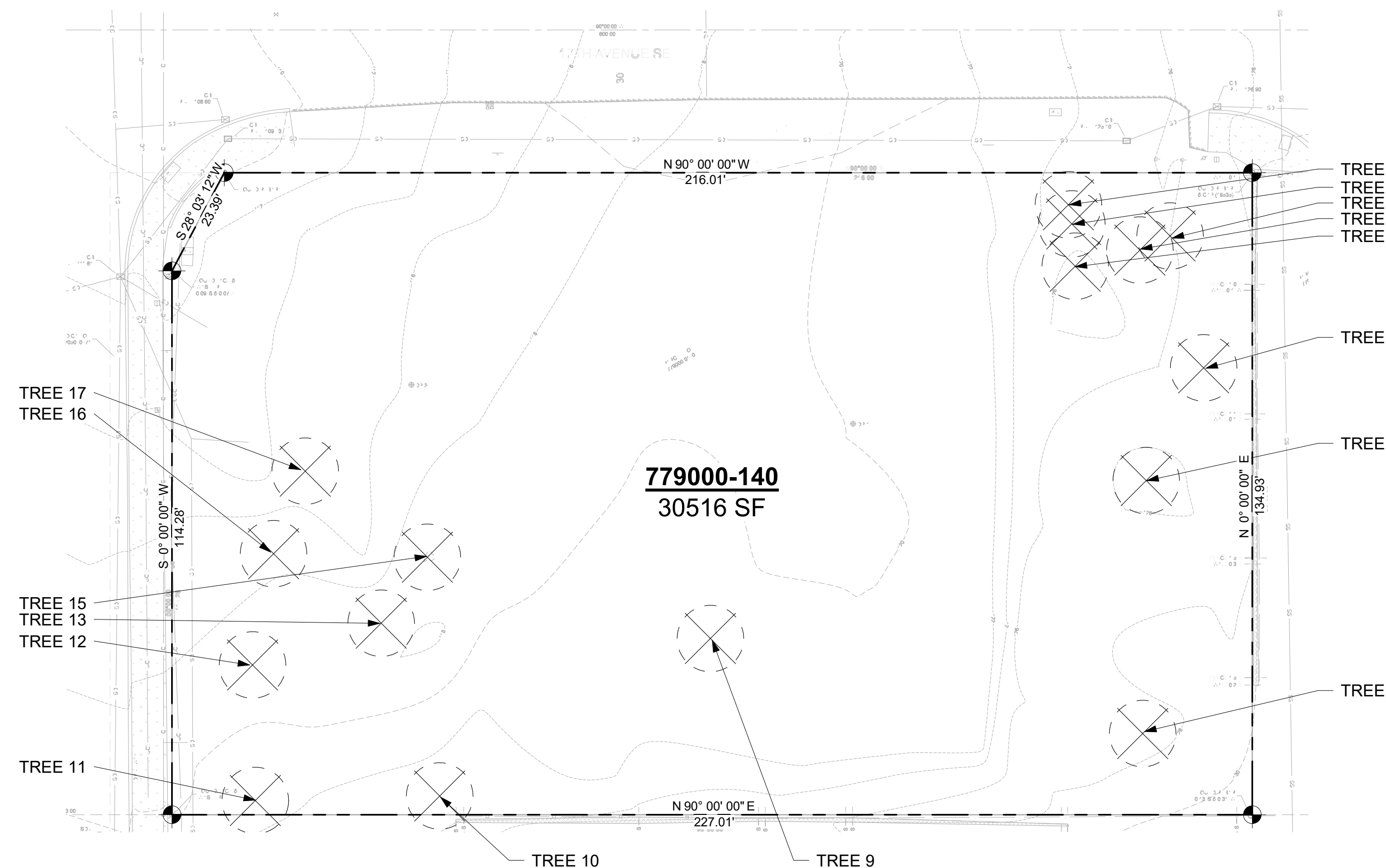
No.	Description	Date



3 Puyallup Tree Protection Detail
 1/2" = 1'-0"

	TREE DRIP LINE
	EVERGREEN TREE
	DECIDUOUS TREE
	TREE TO BE REMOVED
	TREE PROTECTION FENCING MUST BE PLACED PRIOR TO CONSTRUCTION ACTIVITY
	"E" REPRESENTS EXCEPTIONAL TREES. IN EXCESS OF 36" DBH

4 SYMBOLS LEGEND
 1/16" = 1'-0"



ARBORISTS SITE PLAN
 1" = 20'-0"

TREE #	TREE TYPE	DBH	DRIP LINE CRZ/LOD	CONDITION	RETAIN OR REMOVE	NOTES
1.	BLACK COTTONWOOD (<i>trichocarpa</i>)	20"		FAIR	REMOVE	
2.	BLACK COTTONWOOD (<i>trichocarpa</i>)	18"		FAIR	REMOVE	
3.	BLACK COTTONWOOD (<i>trichocarpa</i>)	20"		FAIR	REMOVE	
4.	BLACK COTTONWOOD (<i>trichocarpa</i>)	20"		FAIR	REMOVE	
5.	BLACK COTTONWOOD (<i>trichocarpa</i>)	28"		FAIR	REMOVE	
6.	WESTERN RED CEDAR (<i>Thuja plicata</i>)	24"		FAIR	REMOVE	
7.	BLACK COTTONWOOD (<i>trichocarpa</i>)	20"		FAIR	REMOVE	
8.	BLACK COTTONWOOD (<i>trichocarpa</i>)	28"		FAIR	REMOVE	
9.	BLACK COTTONWOOD (<i>trichocarpa</i>)	20"		FAIR	REMOVE	
10.	BLACK LOCUST (<i>Robinia pseudoacacia</i>)	12"		FAIR	REMOVE	
11.	BLACK COTTONWOOD (<i>trichocarpa</i>)	20"		FAIR	REMOVE	
12.	WESTERN RED CEDAR (<i>Thuja plicata</i>)	20"		FAIR	REMOVE	
13.	WESTERN RED CEDAR (<i>Thuja plicata</i>)	20"		FAIR	REMOVE	
14.	NOT USED					
15.	WESTERN RED CEDAR (<i>Thuja plicata</i>)	18"		FAIR	REMOVE	
16.	BLACK COTTONWOOD (<i>trichocarpa</i>)	24"		FAIR	REMOVE	
17.	BLACK COTTONWOOD (<i>trichocarpa</i>)	24"		POOR	REMOVE	MISSING TOP HALF

2 TREE LIST
 1/4" = 1'-0"

PREPARED BY:
 NEAL BAKER
 ARBORISTS NW.COM
 ISA CERT. PN 075A
 TRAQ ISA (TREE RISK ASSESSMENT QUALIFIED)
 MEMBER AREA & SOCA
 PH: 206 779 2579

ARBORIST TREE PLAN

Project number	23012
Date	1/25/24
Drawn by	CW
Checked by	NB

X100

Scale As indicated

1617 S MERIDIAN, PUYALLUP, WA 98731