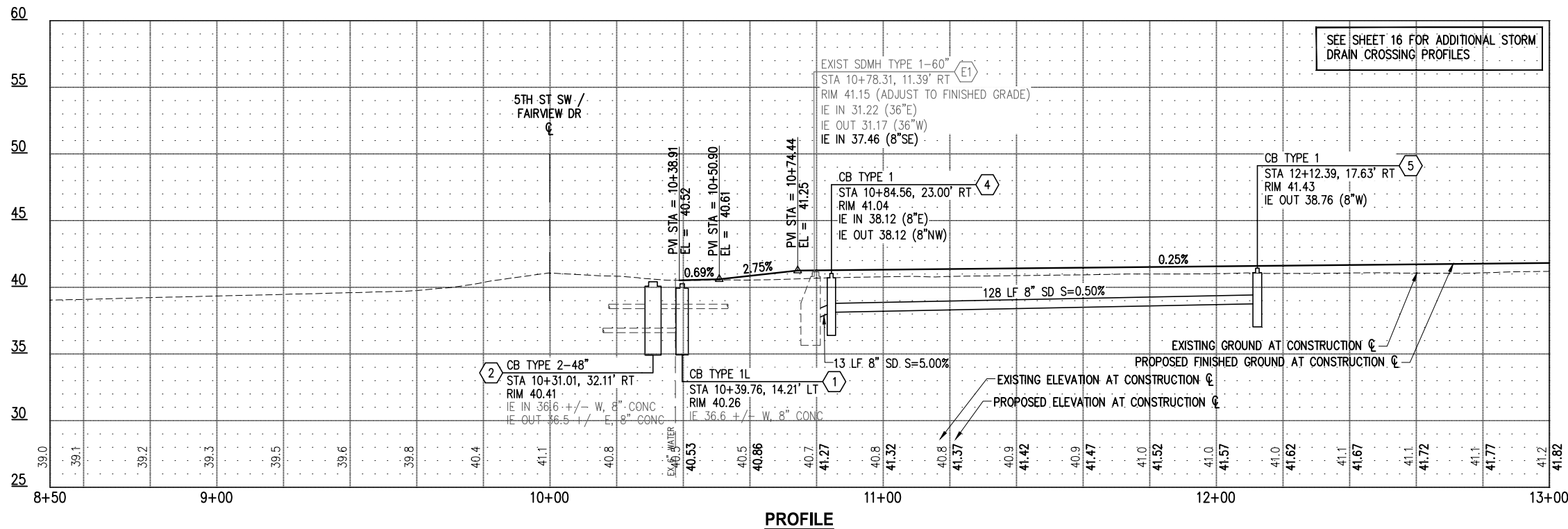


GENERAL NOTES

- FOR GRADING PLANS, SEE SHEETS 17-24
- FOR SIGNALIZATION & ILLUMINATION IMPROVEMENTS, SEE SHEETS 37-46.
- CEMENT CONCRETE PAVEMENT TREATMENT AND DETAIL VARY THROUGHOUT THE PROJECT. SEE URBAN DESIGN PLAN SHEETS 25-26 FOR ADDITIONAL DETAILS.
- NEW CATCH BASINS IN FLOWLINE SHALL HAVE VANED FRAME & GRATE, UNLESS OTHERWISE SPECIFIED.

CONSTRUCTION NOTES

- MATCH EXISTING.
- CONSTRUCT COLORED CONC. PAVEMENT BAND PER DETAIL 8, SHEET 8.
- CONSTRUCT DECORATIVE CEMENT CONC. PAVEMENT CROSSWALK PER DETAIL, SHEET 6 AND 27.
- CONSTRUCT DENSE CEMENT CONC. SIDEWALK PER C.O.P. STANDARD DETAIL 01.02.01 TO MATCH EXISTING WALKWAY.
- ADJUST DRAINAGE STRUCTURE TO FINISHED GRADE.
- INSTALL NEW NON-LOCKING WATER VALVE BOX AND ADJUST TO FINISHED GRADE.
- ADJUST SEWER CLEAN OUT TO GRADE.
- INSTALL NEW LOCKING WATER VALVE BOX AND ADJUST TO FINISHED GRADE.
- ADJUST WATER METER BOX TO FINISHED GRADE.
- CONSTRUCT SIDEWALK TRANSITION PANEL.
- CONSTRUCT COLORED CEMENT CONC. PAVEMENT BAND WITH INTEGRAL COLOR AND TEXTURE, PER DETAIL 9, SHEET 8.
- CONSTRUCT HMA ROADWAY RAMP PER DETAIL 1, SHEET 7.
- CONSTRUCT COLORED CEMENT CONC. VALLEY GUTTER PER DETAIL 6, SHEET 8.
- PLANTER ARE. SEE LANDSCAPE SHEETS.
- CONNECT NEW STRUCTURE TO EXISTING PIPE.
- CONNECT NEW PIPE TO EXISTING STRUCTURE.



LEGEND

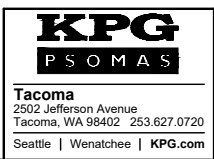
- PERVIOUS CONC. SIDEWALK
- NEW PHMA PAVEMENT SECTION
- CEMENT CONC. PAVEMENT (ROAD, SIDEWALK, CURB RAMP, OR DRIVEWAY ENTRANCE)
- NEW HMA PAVEMENT SECTION
- PROPOSED RIGHT-OF-WAY
- EMBANKMENT LINE - FILL
- STORM PIPE WITH FLOW DIRECTION
- CATCH BASIN TYPE 1/1L PER C.O.P. STD DET 02.01.03
- CATCH BASIN TYPE 2 PER C.O.P. STD DET 02.01.04
- STORM DRAIN STRUCTURE NUMBER

APPROVED
 BY: _____
 CITY OF PUYALLUP
 APPROVED DATE: _____
 EXPIRATION DATE: _____
 NOTE: This approval expires on the date shown. If construction has not started by expiration date, plans must be resubmitted for review and approval.
 The City will not be responsible for errors and/or omissions on these plans.
 Field conditions may dictate changes to these plans as determined by the City Engineer.

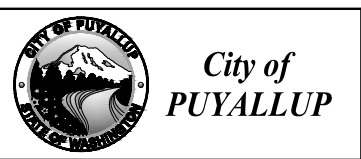
K:\PUYALLUP\16123-9th Ave SW\DESIGN\Drawings\Contract\16123RD01.dwg 12/15/2023 5:02 PM

NO.	DATE	BY	APPR.	REVISIONS

Approved By		FILENAME	DATE
ENGINEERING MANAGER	DATE	DESIGNED BY	DATE
PROJECT MANAGER	DATE	DRAWN BY	DATE
PROJECT ENGINEER	DATE	CHECKED BY	DATE



60% REVIEW SUBMITTAL



9TH AVENUE SW IMPROVEMENTS PHASE 2

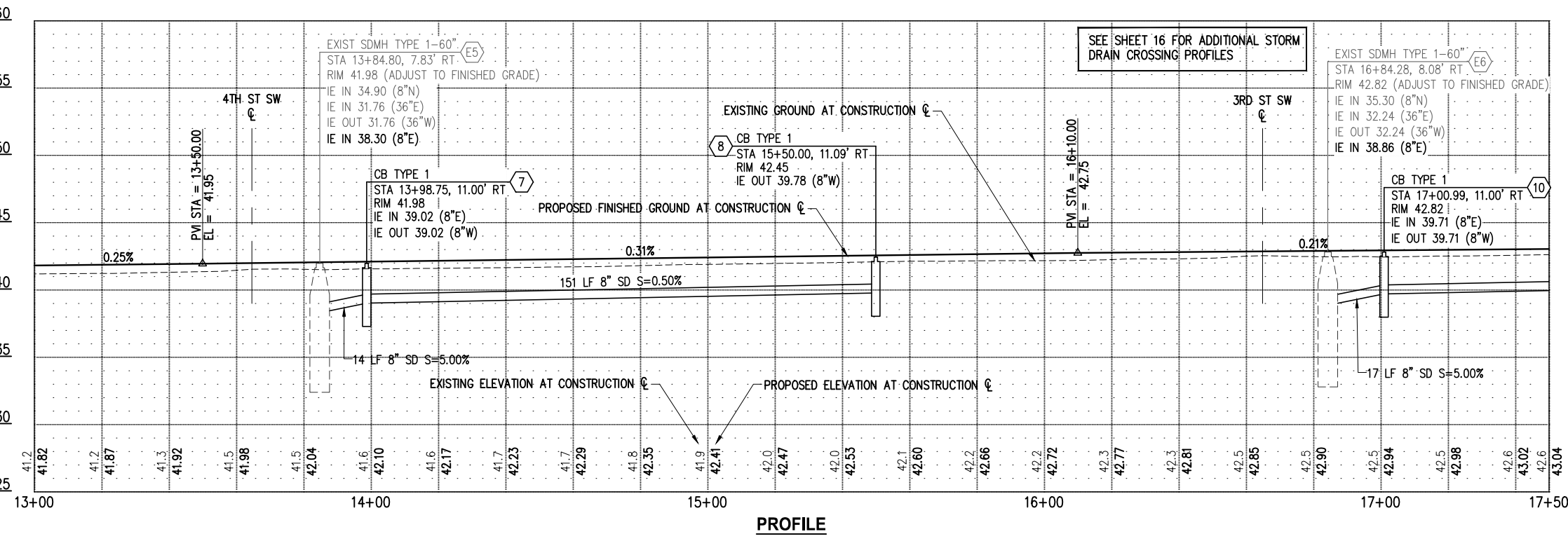
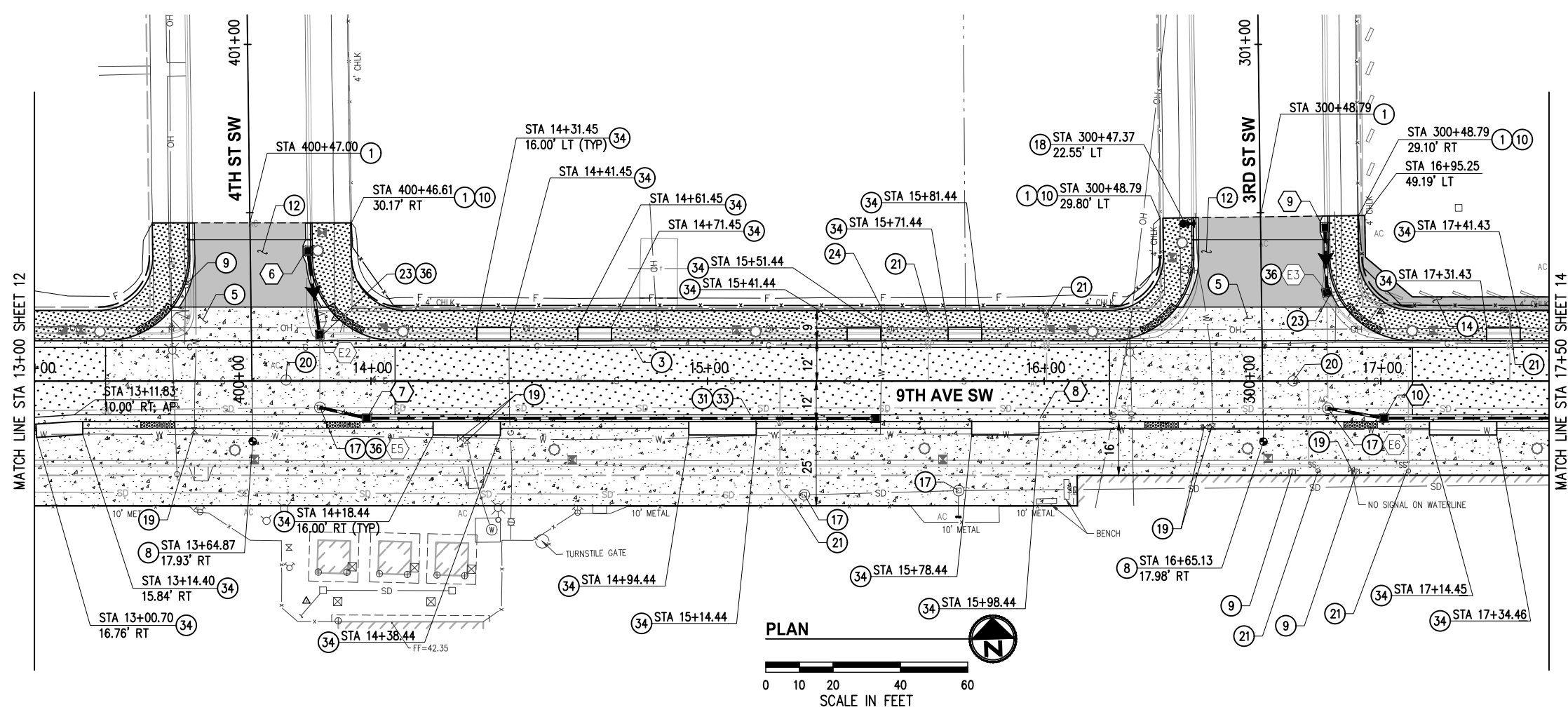
ROADWAY PLAN & PROFILE
 STA 8+50 TO STA 13+00
 KPG PROJECT No. 16123 SHT 12 OF 48

GENERAL NOTES

- FOR GRADING PLANS, SEE SHEETS 17-24
- FOR SIGNALIZATION & ILLUMINATION IMPROVEMENTS, SEE SHEETS 37-46.
- CEMENT CONCRETE PAVEMENT TREATMENT AND DETAIL VARY THROUGHOUT THE PROJECT. SEE URBAN DESIGN PLAN SHEETS 25-26 FOR ADDITIONAL DETAILS.
- NEW CATCH BASINS IN FLOWLINE SHALL HAVE VANED FRAME & GRATE, UNLESS OTHERWISE SPECIFIED.

CONSTRUCTION NOTES

- MATCH EXISTING.
- CONSTRUCT COLORED CONC. PAVEMENT BAND PER DETAIL 8, SHEET 8.
- CONSTRUCT DECORATIVE CEMENT CONC. PAVEMENT CROSSWALK PER DETAIL, SHEET 6 AND 27.
- INSTALL MONUMENT PER C.O.P. STANDARD DETAIL 01.01.17.
- ADJUST GAS VALVE TO FINISHED GRADE.
- CONSTRUCT CHAIN LINK FENCE TYPE 6 PER C.O.P. STANDARD DETAIL 06.01.08.
- CONSTRUCT HMA ROADWAY RAMP PER DETAIL 3, SHEET 8.
- RECONSTRUCT DRIVEWAY OR PARKING LOT WITH 3" HMA CL 1/2" PG58H-22 OVER 6" CSBC.
- ADJUST DRAINAGE STRUCTURE TO FINISHED GRADE.
- INSTALL FIRE HYDRANT ASSEMBLY, COMPLETE, INCLUDING TAPPING TEE, PER C.O.P. STD DETAIL 03.05.01.
- INSTALL NEW NON-LOCKING WATER VALVE BOX AND ADJUST TO FINISHED GRADE.
- ADJUST SEWER MANHOLE TO FINISHED GRADE.
- ADJUST SEWER CLEAN OUT TO GRADE.
- REPLACE WITH NEW RECTANGULAR SOLID METAL COVER PER WSDOT STD PLAN B-30.20 AND ADJUST TO FINISHED GRADE.
- ADJUST WATER METER BOX TO FINISHED GRADE.
- CONSTRUCT COLORED CEMENT CONC. PAVEMENT BAND WITH INTEGRAL COLOR AND TEXTURE, PER DETAIL 9, SHEET 8.
- CONSTRUCT COLORED CEMENT CONC. VALLEY GUTTER PER DETAIL 6, SHEET 8.
- PLANTER ARE. SEE LANDSCAPE SHEETS.
- CONNECT NEW PIPE TO EXISTING STRUCTURE.



LEGEND

- PERVIOUS CONC. SIDEWALK
- NEW PHMA PAVEMENT SECTION
- CEMENT CONC. PAVEMENT (ROAD, SIDEWALK, CURB RAMP, OR DRIVEWAY ENTRANCE)
- NEW HMA PAVEMENT SECTION
- PROPOSED RIGHT-OF-WAY
- EMBANKMENT LINE - FILL
- STORM PIPE WITH FLOW DIRECTION
- CATCH BASIN TYPE 1/1L PER C.O.P. STD DET 02.01.03
- CATCH BASIN TYPE 2 PER C.O.P. STD DET 02.01.04
- STORM DRAIN STRUCTURE NUMBER

APPROVED
 BY: _____
 CITY OF PUYALLUP
 APPROVED DATE: _____
 EXPIRATION DATE: _____
 NOTE: This approval expires on the date shown. If construction has not started by expiration date, plans must be resubmitted for review and approval.
 The City will not be responsible for errors and/or omissions on these plans.
 Field conditions may dictate changes to these plans as determined by the City Engineer.

K:\PUYALLUP\16123-9th Ave SW\DESIGN\Drawings\Contract\16123RD01.dwg 12/15/2023 5:02 PM

NO.	DATE	BY	APPR.	REVISIONS

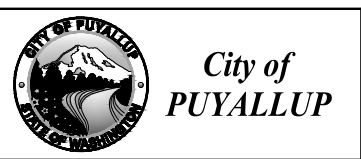
Approved By

ENGINEERING MANAGER	DATE	FILENAME	DATE
DESIGNED BY	DATE	JRW	12/2023
PROJECT MANAGER	DATE	JRW	12/2023
DRAWN BY	DATE	NIM	12/2023
PROJECT ENGINEER	DATE	CHECKED BY	DATE



KPG PSOMAS
 Tacoma
 2502 Jefferson Avenue
 Tacoma, WA 98402 253.627.0720
 Seattle | Wenatchee | KPG.com

60% REVIEW SUBMITTAL



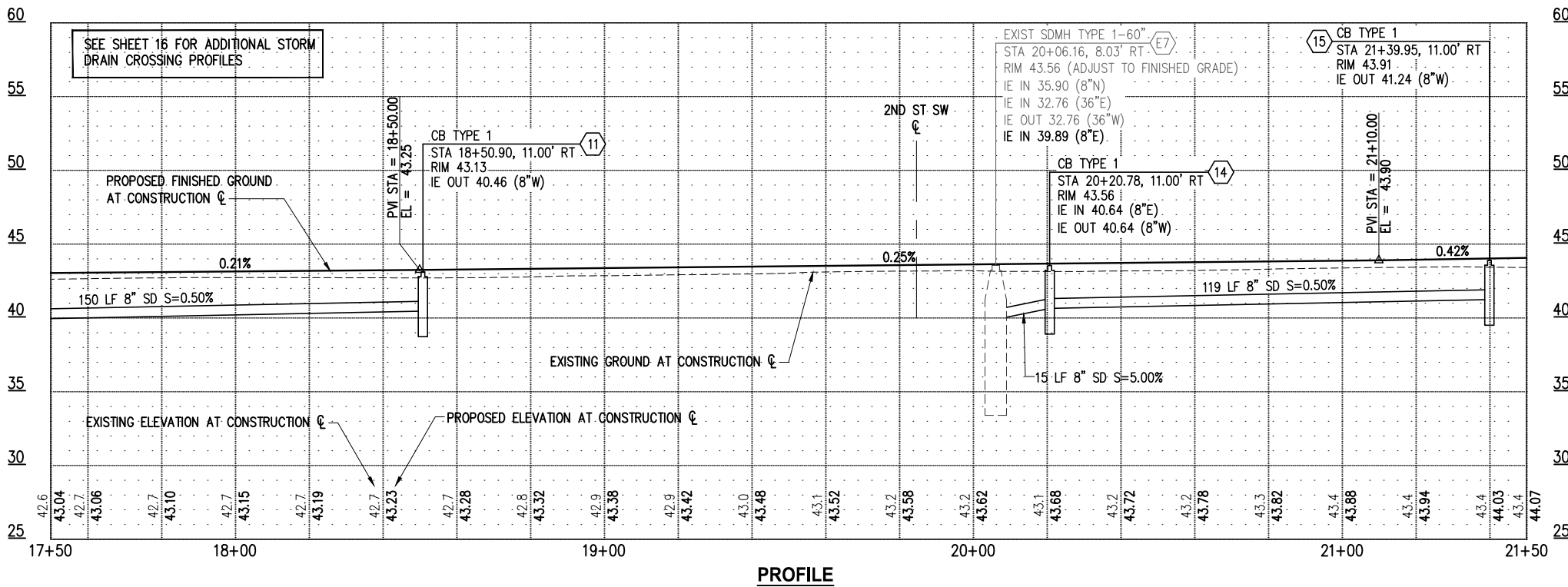
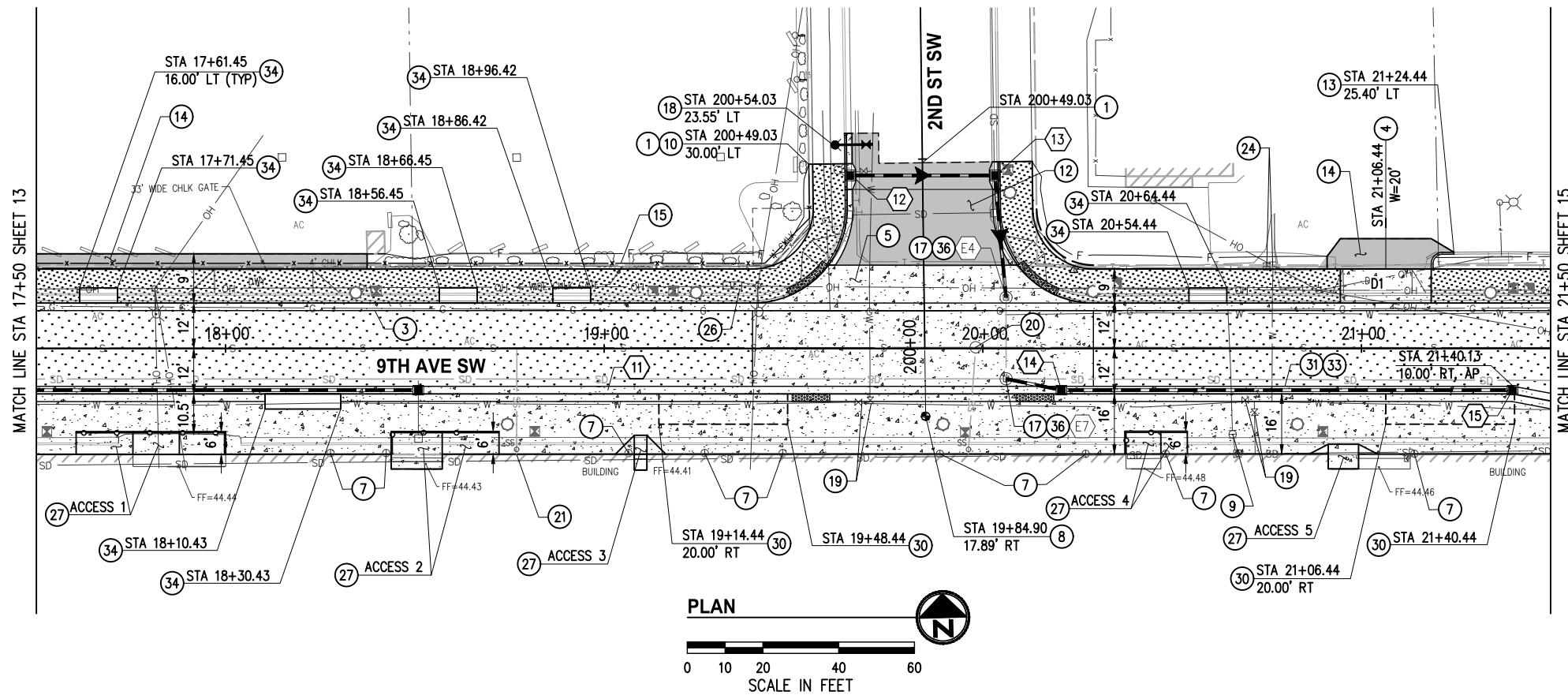
9TH AVENUE SW IMPROVEMENTS PHASE 2

ROADWAY PLAN & PROFILE
 STA 13+00 TO STA 17+50
 KPG PROJECT No. 16123 SHT 13 OF 48

GENERAL NOTES
SEE SHEET 13 FOR GENERAL NOTES.

CONSTRUCTION NOTES

- 1 MATCH EXISTING.
- 3 CONSTRUCT COLORED CONC. PAVEMENT BAND PER DETAIL 8, SHEET 8.
- 4 CONSTRUCT CEMENT CONC. DRIVEWAY APPROACH PER DETAIL 2, SHEET 7.
- 5 CONSTRUCT DECORATIVE CEMENT CONC. PAVEMENT CROSSWALK PER DETAIL, SHEET 6 AND 27.
- 7 ADJUST DOWN SPOUT TO GRADE.
- 8 INSTALL MONUMENT PER C.O.P. STANDARD DETAIL 01.01.17.
- 9 ADJUST GAS VALVE TO FINISHED GRADE.
- 10 CONSTRUCT CHAIN LINK FENCE TYPE 6 PER C.O.P. STANDARD DETAIL 06.01.08.
- 12 CONSTRUCT HMA ROADWAY RAMP PER DETAIL 3, SHEET 8.
- 13 CONSTRUCT CEMENT CONC. EXTRUDED CURB TYPE 6 PER WSDOT STANDARD PLAN F-10.42-00.
- 14 RECONSTRUCT DRIVEWAY OR PARKING LOT WITH 3" HMA CL 1/2" PG58H-22 OVER 6" CSBC.
- 15 CONSTRUCT CHAIN LINK SINGLE GATE PER WSDOT STANDARD PLAN L-30.10-02.
- 17 ADJUST DRAINAGE STRUCTURE TO FINISHED GRADE.
- 18 INSTALL FIRE HYDRANT ASSEMBLY, COMPLETE, INCLUDING TAPPING TEE, PER C.O.P. STD DETAIL 03.05.01.
- 19 INSTALL NEW NON-LOCKING WATER VALVE BOX AND ADJUST TO FINISHED GRADE.
- 20 ADJUST SEWER MANHOLE TO FINISHED GRADE.
- 21 ADJUST SEWER CLEAN OUT TO GRADE.
- 24 ADJUST WATER METER BOX TO FINISHED GRADE.
- 26 ADJUST UTILITY VAULT TO FINISHED GRADE.
- 27 CONSTRUCT CONC. ACCESS RAMP PER DETAILS SHEET 24.
- 30 CONSTRUCT LOADING ZONE PER DETAIL 2, SHEET 7.
- 31 CONSTRUCT COLORED CEMENT CONC. PAVEMENT BAND WITH INTEGRAL COLOR AND TEXTURE, PER DETAIL 9, SHEET 8.
- 33 CONSTRUCT COLORED CEMENT CONC. VALLEY GUTTER PER DETAIL 6, SHEET 8.
- 34 PLANTER ARE. SEE LANDSCAPE SHEETS.
- 36 CONNECT NEW PIPE TO EXISTING STRUCTURE.



LEGEND

- PERVIOUS CONC. SIDEWALK
- NEW PHMA PAVEMENT SECTION
- CEMENT CONC. PAVEMENT (ROAD, SIDEWALK, CURB RAMP, OR DRIVEWAY ENTRANCE)
- NEW HMA PAVEMENT SECTION
- PROPOSED RIGHT-OF-WAY
- F EMBANKMENT LINE - FILL
- STORM PIPE WITH FLOW DIRECTION
- CATCH BASIN TYPE 1/1L PER C.O.P. STD DET 02.01.03
- CATCH BASIN TYPE 2 PER C.O.P. STD DET 02.01.04
- STORM DRAIN STRUCTURE NUMBER

APPROVED

BY: _____
CITY OF PUYALLUP

APPROVED DATE: _____

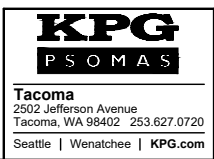
EXPIRATION DATE: _____

NOTE: This approval expires on the date shown. If construction has not started by expiration date, plans must be resubmitted for review and approval. The City will not be responsible for errors and/or omissions on these plans. Field conditions may dictate changes to these plans as determined by the City Engineer.

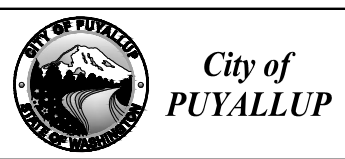
K:\PUYALLUP\16123-9th Ave SW\DESIGN\Drawings\Contract\16123RD01.dwg 12/15/2023 5:02 PM

NO.	DATE	BY	APPR.	REVISIONS

Approved By		16123RD01.dwg
ENGINEERING MANAGER	DATE	JRW 12/2023
DESIGNED BY	DATE	JRW 12/2023
DRAWN BY	DATE	NIM 12/2023
PROJECT ENGINEER	DATE	CHECKED BY



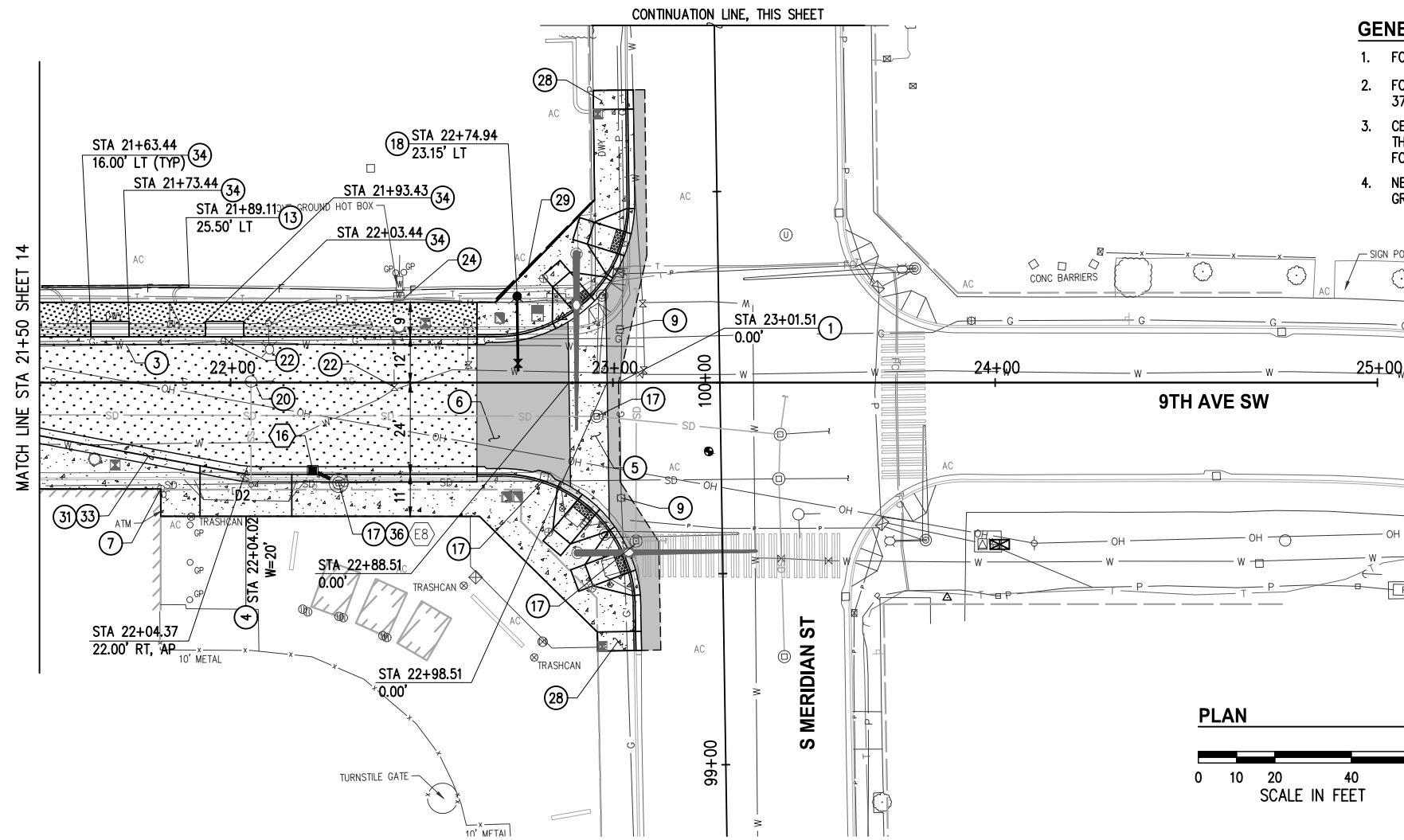
60% REVIEW SUBMITTAL



9TH AVENUE SW IMPROVEMENTS PHASE 2

ROADWAY PLAN & PROFILE
STA 17+50 TO STA 21+50
KPG PROJECT No. 16123 SHT 14 OF 48

K:\PUYALLUP\16123-9th Ave SW\DESIGN\Drawings\Contract\16123RD01.dwg 12/15/2023 5:02 PM

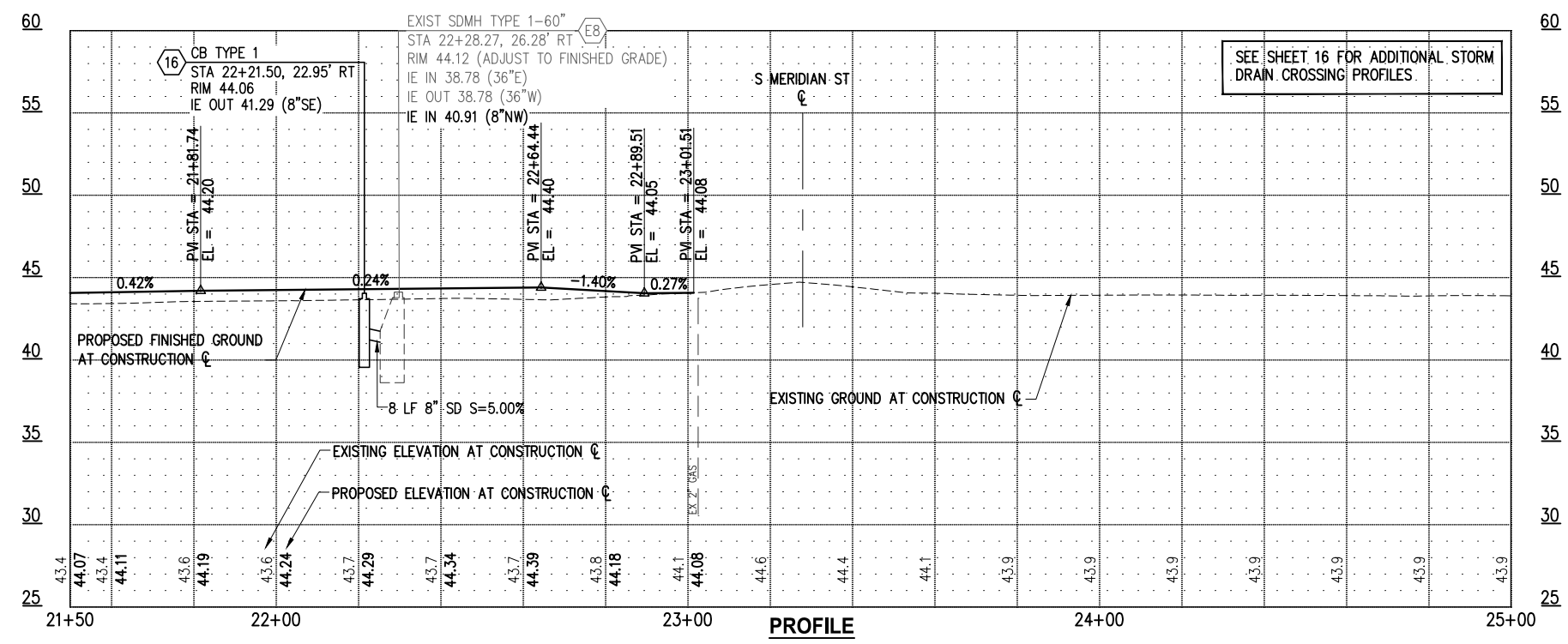
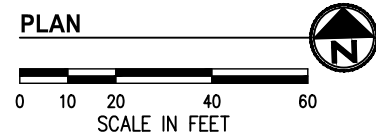
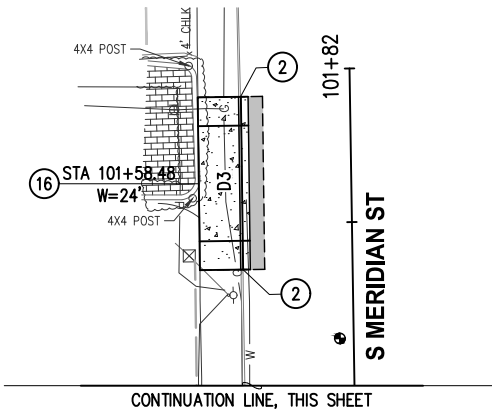


GENERAL NOTES

1. FOR GRADING PLANS, SEE SHEETS 17-24
2. FOR SIGNALIZATION & ILLUMINATION IMPROVEMENTS, SEE SHEETS 37-46.
3. CEMENT CONCRETE PAVEMENT TREATMENT AND DETAIL VARY THROUGHOUT THE PROJECT. SEE URBAN DESIGN PLAN SHEETS 25-26 FOR ADDITIONAL DETAILS.
4. NEW CATCH BASINS IN FLOWLINE SHALL HAVE VANED FRAME & GRATE, UNLESS OTHERWISE SPECIFIED.

CONSTRUCTION NOTES

- 1 MATCH EXISTING.
- 2 CONSTRUCT CEMENT CONC. TRAFFIC CURB & GUTTER PER C.O.P. STANDARD DETAIL 01.02.09.
- 3 CONSTRUCT COLORED CONC. PAVEMENT BAND PER DETAIL 8, SHEET 8.
- 4 CONSTRUCT CEMENT CONC. DRIVEWAY APPROACH PER DETAIL 2, SHEET 7.
- 5 CONSTRUCT DECORATIVE CEMENT CONC. PAVEMENT CROSSWALK PER DETAIL, SHEET 6 AND 27.
- 6 CONSTRUCT HMA ROADWAY RAMP PER DETAIL 3, SHEET 7.
- 7 ADJUST DOWN SPOUT TO GRADE.
- 9 ADJUST GAS VALVE TO FINISHED GRADE.
- 13 CONSTRUCT CEMENT CONC. EXTRUDED CURB TYPE 6 PER WSDOT STANDARD PLAN F-10.42-00.
- 16 CONSTRUCT CEMENT CONC. DROP APPROACH DRIVEWAY PER C.O.P. STANDARD DETAIL 01.02.18.
- 17 ADJUST DRAINAGE STRUCTURE TO FINISHED GRADE.
- 18 INSTALL FIRE HYDRANT ASSEMBLY, COMPLETE, INCLUDING TAPPING TEE, PER C.O.P. STD DETAIL 03.05.01.
- 20 ADJUST SEWER MANHOLE TO FINISHED GRADE.
- 22 INSTALL NEW LOCKING WATER VALVE BOX AND ADJUST TO FINISHED GRADE.
- 24 ADJUST WATER METER BOX TO FINISHED GRADE.
- 28 CONSTRUCT SIDEWALK TRANSITION PANEL.
- 29 CONSTRUCT CEMENT CONCRETE THICKENED EDGE PER DETAIL 7, SHEET 8.
- 31 CONSTRUCT COLORED CEMENT CONC. PAVEMENT BAND WITH INTEGRAL COLOR AND TEXTURE, PER DETAIL 9, SHEET 8.
- 33 CONSTRUCT COLORED CEMENT CONC. VALLEY GUTTER PER DETAIL 6, SHEET 8.
- 34 PLANTER ARE. SEE LANDSCAPE SHEETS.
- 36 CONNECT NEW PIPE TO EXISTING STRUCTURE.



LEGEND

- PVIOUS CONC. SIDEWALK
- NEW PHMA PAVEMENT SECTION
- CEMENT CONC. PAVEMENT (ROAD, SIDEWALK, CURB RAMP, OR DRIVEWAY ENTRANCE)
- NEW HMA PAVEMENT SECTION
- PROPOSED RIGHT-OF-WAY
- F EMBANKMENT LINE - FILL
- STORM PIPE WITH FLOW DIRECTION
- CATCH BASIN TYPE 1/1L PER C.O.P. STD DET 02.01.03
- CATCH BASIN TYPE 2 PER C.O.P. STD DET 02.01.04

APPROVED
 BY: CITY OF PUYALLUP
 APPROVED DATE: _____
 EXPIRATION DATE: _____
 NOTE: This approval expires on the date shown. If construction has not started by expiration date, plans must be resubmitted for review and approval.
 The City will not be responsible for errors and/or omissions on these plans.
 Field conditions may dictate changes to these plans as determined by the City Engineer.

NO.	DATE	BY	APPR.	REVISIONS

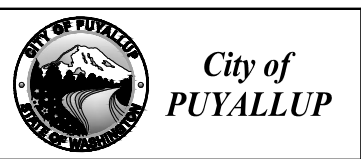
Approved By

ENGINEERING MANAGER	DATE	16123RD01.dwg	FILENAME
PROJECT MANAGER	DATE	JRW	DESIGNED BY
PROJECT ENGINEER	DATE	NIM	DRAWN BY
	DATE		CHECKED BY



KPG
PSOMAS
 Tacoma
 2502 Jefferson Avenue
 Tacoma, WA 98402 253.627.0720
 Seattle | Wenatchee | KPG.com

60% REVIEW SUBMITTAL



9TH AVENUE SW IMPROVEMENTS PHASE 2

ROADWAY PLAN & PROFILE
 STA 21+50 TO STA 25+00
 KPG PROJECT No. 16123 SHT 15 OF 48