

VICINITY MAP

SCALE: N.T.S.

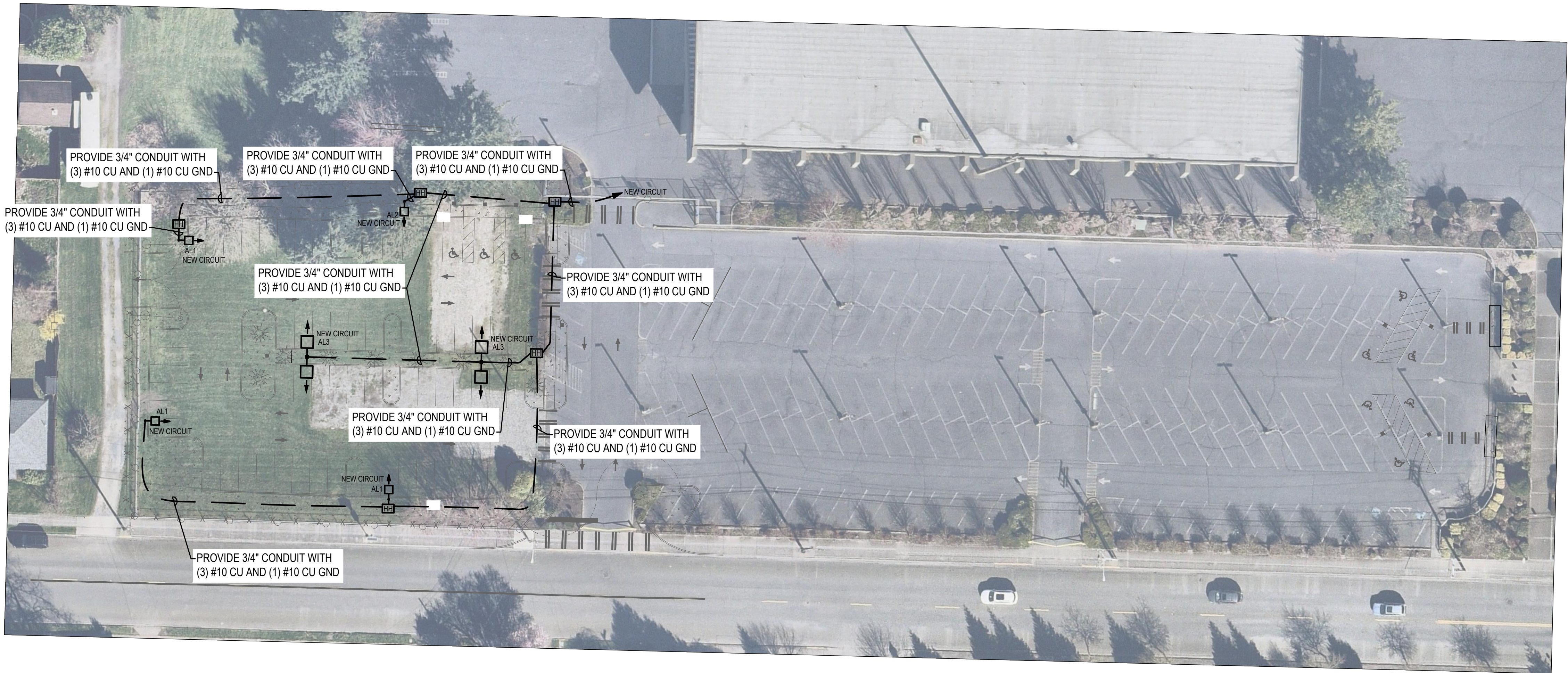


GENERAL NOTES FOR LIGHTING FIXTURE SCHEDULE

1. PROVIDE BALLASTS TO ACCOMMODATE DUAL LEVEL SWITCHING FOR ALL 3 AND 4 LAMP FIXTURES.
2. SEE DRAWINGS FOR EMERGENCY LIGHTING FIXTURES.
3. FOR LIGHTING CONTROLS WHICH INCLUDE DAYLIGHT, OCCUPANCY SENSORS AND TIME CLOCK CONTROLS, THE ELECTRICAL CONTRACTOR SHALL PROVIDE TESTING OF THE CONTROL DEVICES, COMPONENTS, EQUIPMENT AND SYSTEMS TO MAKE SURE THEY ARE CALIBRATED, ADJUSTED AND OPERATE IN ACCORDANCE WITH DRAWINGS AND SPECIFICATIONS. SEQUENCES OF OPERATION SHALL BE FUNCTIONALLY TESTED IN THE PRESENCE OF THE ENGINEER. A COMPLETE REPORT OF TEST PROCEDURES AND RESULTS SHALL BE PREPARED AND FILED WITH THE OWNER.

LIGHTING FIXTURE SCHEDULE

SYMBOL	FIXTURE DESCRIPTION	MANUFACTURER/MODEL #	LUMENS	V	W	MOUNTING & REMARKS
AL1	SITE AREA LIGHTING LED WITH HOUSE SIDE SHIELD	MCGRW-EDISON# GALN-SA1C-840-U-SL4-XX-HSS MCGRW-EDISON# RSS4A20SXX1X	4922	120/ 277	57	STANDARD FINISH BY ARCHITECT. PROVIDE WITH INTEGRAL SENSOR FOR CONTROL. SEE POLE BASE DETAIL FOR REQUIREMENTS.
AL2	SITE AREA LIGHTING LED	MCGRW-EDISON# GALN-SA1C-840-U-SL4-XX MCGRW-EDISON# RSS4A20SXX1X	5856	120/277	57	STANDARD FINISH BY ARCHITECT. PROVIDE WITH INTEGRAL SENSOR FOR CONTROL. SEE POLE BASE DETAIL FOR REQUIREMENTS.
AL3	DUAL HEAD SITE AREA LIGHTING LED	MCGRW-EDISON# GALN-SA1C-840-U-5WQ-XX-MA1037-XX MCGRW-EDISON# RSS4A20SXX1X	12522	120/277	114	STANDARD FINISH BY ARCHITECT. PROVIDE WITH INTEGRAL SENSOR FOR CONTROL. SEE POLE BASE DETAIL FOR REQUIREMENTS.



EVENT PARKING LAYOUT DESIGN OPTION 6 - ELECTRICAL

SCALE: 1"=30'

APPROVED

BY _____
CITY OF PUYALLUP
DEVELOPMENT ENGINEERING

DATE _____

NOTE: THIS APPROVAL IS VOID
AFTER 180 DAYS FROM APPROVAL
DATE.
THE CITY WILL NOT BE
RESPONSIBLE FOR ERRORS
AND/OR OMISSIONS ON THESE
PLANS.
FIELD CONDITIONS MAY DICTATE
CHANGES TO THESE PLANS AS
DETERMINED BY THE
DEVELOPMENT ENGINEERING
MANAGER.

REVISIONS

APPROVALS

SEAL

PREPARED BY

PREPARED FOR

PROJECT

SHEET NO.

PROJECT NO.

19474



PUYLLUP SCHOOL DISTRICT
323 12TH ST NW
PUYALLUP, WA 98374

SPARKS STADIUM
EVENT PARKING LOT
PUYALLUP, WASHINGTON 98371
PRELIMINARY
PARKING LAYOUT



HORIZONTAL SCALE: 1"=30'
30 0 30 60



Know what's below.
Call before you dig.



Project No.: 19474 Project Mgr.: RCH
Proj. Engineer: SAJ Proj. Drafter: SAJ