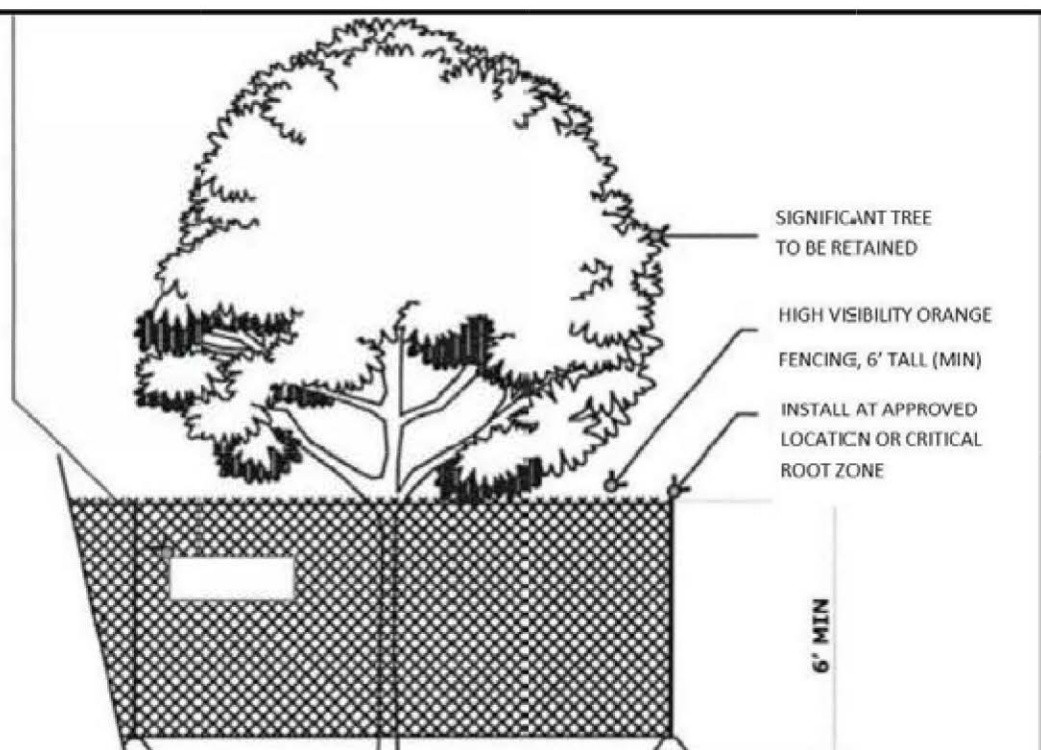




**TREE CRITICAL ROOT PROTECTION ZONE TABULATION**

TREE #1 - 40' CRPZ	1,257 SF
CRPZ SF:	1,04 SF (13%)
DISTURBED AREA SF:	
TREE #2 - 28' CRPZ	616 SF
CRPZ SF:	109 SF (18%)
DISTURBED AREA SF:	
TREE #3 - 32' CRPZ	804 SF
CRPZ SF:	170 SF (21%)
DISTURBED AREA SF:	
TOTAL CRPZ SF:	2,677 SF
TOTAL DISTURBED AREA SF:	443 SF (17%)

**TREE PROTECTION ZONE (TPZ)**  
 NO ENTRY, NO GRADE CHANGES, STORAGE/STOCKPILING OF MATERIALS OR EQUIPMENT, PLACEMENT OF FILL OR TOP SOIL, TRENCHING OR VEHICULAR/ROOT TRAFFIC IS PERMITTED WITHIN THE TPZ. THIS TREE BARRIER SHALL NOT BE REMOVED WITHOUT AUTHORIZATION FROM PUYALLUP PLANNING DEPARTMENT - SUBJECT TO FINES AND ENFORCEMENT ACTION BY THE CITY - TO REPORT VIOLATIONS OR FOR MORE INFORMATION - CALL (253) 864-4500.



- MINIMUM SIX (6) FEET HIGH TEMPORARY HIGH VISIBILITY ORANGE CONSTRUCTION FENCING SHALL BE PLACED AT THE CRITICAL ROOT ZONE OR DESIGNATED LIMIT OF DISTURBANCE BY APPROVED FINAL LANDSCAPE PLAN SET. FENCING SHALL BE INSTALLED WITHIN THREE (3) FEET OF THE TREE TRUNK AND SHALL BE MAINTAINED THROUGHOUT CONSTRUCTION. FENCING SHALL BE REMOVED PRIOR TO WORK COMMENCING ON SITE AND SHALL BE RELOCATED TO PROTECT REMAINING TREES. CALL THE CITY PLANNING DIVISION WITH REQUESTS TO MODIFY THE LOCATION OF THE TREE PROTECTION FENCING - (253) 864-4500.
- TREATMENT OF EXISTING DAMAGED CONSTRUCTION FOR ROOTS OVER ONE (1) INCH DIAMETER DAMAGED DURING CONSTRUCTION, MAKE A CLEAR STRIPEY CUT TO REMOVE DAMAGED PORTION OF ROOT. ALL EXPOSED ROOTS SHALL BE TEMPORARILY COVERED WITH SAND BAGS TO PREVENT OFFERS AND COVERED WITH 20% AS 200% AS POSSIBLE. OTHER PRE-TREATMENT MEASURES MAY BE REQUIRED TO PROTECT TREE SYSTEM - SEE APPROVED FINAL LANDSCAPE PLAN FOR TREATMENT DETAILS.
- NO STOCKPILING OF MATERIALS, VEHICULAR TRAFFIC, PLACEMENT OF TOP SOIL OR FILL MATERIAL, STORAGE OF EQUIPMENT OR MACHINERY SHALL BE ALLOWED WITHIN THE LIMITS OF THE DESIGNATED TREE PROTECTION ZONE. IF VIOLATED, FENCING SHALL BE REMOVED IMMEDIATELY BY THE CITY PLANNING DIVISION. WHEN WITHIN PROTECTION FENCING SHALL BE DONE MANUALLY UNDER THE SUPERVISION OF THE ON-SITE ARCHITECT. WHEN PROXIMITY APPROVAL BY THE CITY PLANNING DIVISION.
- THE ABOVE REFERENCED TREE PROTECTION SHALL BE TAPEXED DURING CONSTRUCTION AND SHALL REMAIN IN PLACE THROUGHOUT ALL PHASES OF CONSTRUCTION.

**TREE PROTECTION FENCING DETAIL**  
 (for public and private trees)

**PLANT PALETTE**

Symbol	Botanical Name	Common Name	Size & Spacing
	<i>Acer circinatum</i> *	Vine Maple	8'-10' H, 3 Stem min. Spacing per plan
	<i>Acer rubrum</i> 'Scarlet'	Scarlet Sentinel Maple	2' Caliper Spacing per plan
	<i>Calocedrus decurrens</i> *	Incense Cedar	8'-10' H, Spacing per plan
	<i>Cercis canadensis</i> *	Eastern redbud	8'-10' H, 3 Stem min. Spacing per plan
	<i>Lagerstroemia</i> f. 'Muskegee'	Lavender Cape Myrtle	1.5' Caliper Spacing per plan
	<i>Platanus</i> a. 'Bloodgood'	London Planetree	2' Caliper Spacing per plan
	<i>Pseudotsuga menziesii</i> *	Douglas Fir	8'-10' H, Spacing per plan
	<i>Quercus rubra</i> *	Northern Red Oak	2' Caliper Spacing per plan
	<i>Thuja plicata</i> *	Western Red Cedar	6'-8' H, Spacing per plan
	<i>Ulmus americana</i> 'Princeton'	Princeton Elm	2' Caliper Spacing per plan
	<i>Zelkova serrata</i>	Japanese Zelkova	2' Caliper Spacing per plan
		EXISTING TREE TO BE REMOVED	
		EXISTING TREE TO REMAIN	

**SHRUBS/ GROUNDCOVERS**

Symbol	Botanical Name	Common Name	On Center Spacing
	<i>Abelia grandiflora</i> 'Edward Goucher'	Glossy Abelia	4' O.C.
	<i>Achillea millefolium</i> 'Red Beauty'	Red Beauty Yarrow	2' O.C.
	<i>Aquilegia formosa</i> *	Western Columbine	3' O.C.
	<i>Arbutus unedo</i> 'Compacta'	Compact Strawberry Tree	6' O.C.
	<i>Arctostaphylos uva-ursi</i> 'Vancouver Jade'	Vancouver Jade Kinnikinnick	2.5' O.C.
	<i>Calluna vulgaris</i> 'acutiflora'	Kaif Foerster Feather Grass	2.5' O.C.
	<i>Cotula coronopifolia</i> 'Ice Dance'	Ice Dance Variegated Sedge	2' O.C.
	<i>Cornus stolonifera</i> *	Redtwig Dogwood	4' O.C.
	<i>Fragaria chiloensis</i> *	Wild Strawberry	1.5' O.C.
	<i>Galium odoratum</i> *	Sweet Woodruff	1.5' O.C.
	<i>Gaultheria shallon</i> *	Salal	4.5' O.C.
	<i>Genista pilosa</i> 'Vancouver Gold'	Vancouver Gold Broom	3' O.C.
	<i>Helictotrichon sempervirens</i>	Blue Owl Grass	2' O.C.
	<i>Hydrangea macrophylla</i> 'Nikko Blue'	Nikko Blue Hydrangea	4' O.C.
	<i>Hydrangea quercifolia</i> *	Oakleaf Hydrangea	8' O.C.
	<i>Lavandula angustifolia</i> 'Munstead'	Munstead Lavender	2.5' O.C.
	<i>Liriodendron muscari</i> 'Big Blue'	Big Blue Liriodendron	18' O.C.
	<i>Miscanthus sinensis</i> 'Adagio'	Adagio Dwarf Maiden Grass	2.5' O.C.
	<i>Pennisetum alopecuroides</i> 'Hamlet'	Hamlet Fountain Grass	2.5' O.C.
	<i>Polystichum munifolium</i> *	Western Sword Fern	3' O.C.
	<i>Physocarpus opulifolius</i>	Ninebark	7.5' O.C.
	<i>Rosa x 'Scarlet Meidland'</i>	Scarlet Meidland Shrub Rose	3' O.C.
	<i>Rosa nutkana</i> *	Nootka Rose	7.5' O.C.
	<i>Sarcococca nussifolia</i> *	Fragrant Sweet Box	3' O.C.
	<i>Spiraea x burmaidii</i> 'Goldflame'	Goldflame Spiraea	7.5' O.C.
	<i>Vaccinium ovatum</i> *	Evergreen Huckleberry	7.5' O.C.

**SCREEN SHRUBS**

	<i>Euonymus alatus</i> 'Compactus'	Compact Burning Bush	3' O.C.
	<i>Ligustrum japonicum</i> 'Texanum'	Waxleaf Privet	3' O.C.
	<i>Manihot aquifolium</i> 'Compacta'	Compact Oregon Grape	3' O.C.

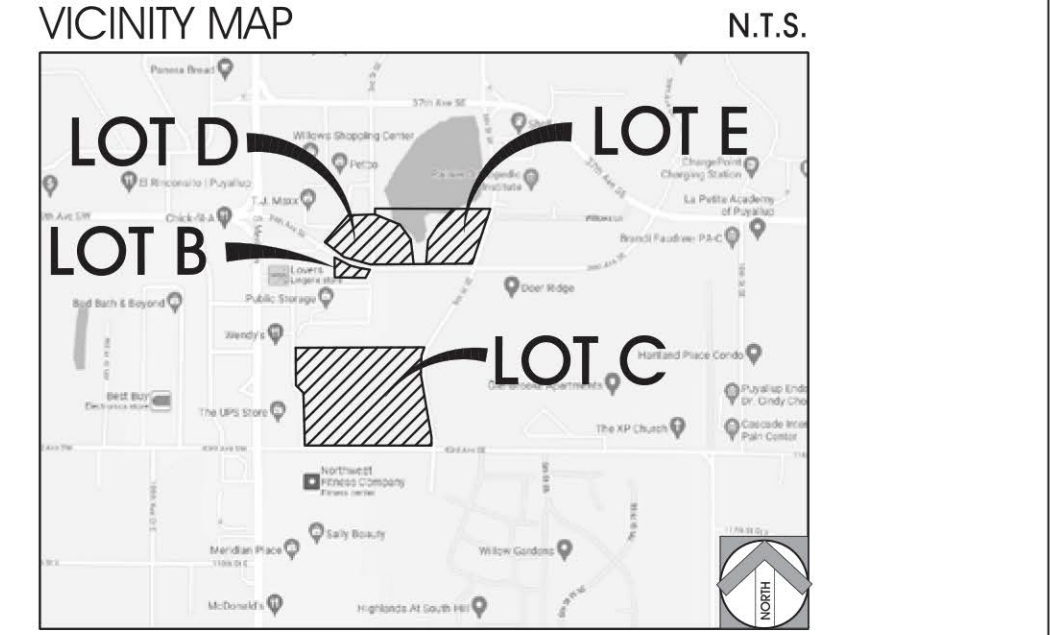
**(\*) INDICATES NATIVE PLANT SPECIES**

**NOTES**

- PLANT MATERIAL NOT LISTED MAY BE USED, SUBJECT TO APPROVAL BY THE CITY.
- ALL PLANTING MATERIAL SHALL MEET OR EXCEED THE MOST RECENT STANDARDS ESTABLISHED IN THE PUBLICATION 'AMERICAN STANDARDS FOR NURSERY STOCK', ANSI Z60.1-2004 OR CURRENT SUCCESSOR OF THE AMERICAN ASSOCIATION OF NURSERYMEN (ANN).
- ALL LANDSCAPE AREAS SHALL RECEIVE AUTOMATIC IRRIGATION SYSTEM.
- ALL LANDSCAPE INSTALLATION SHALL BE PERMANENTLY MAINTAINED.
- A MINIMUM OF 25% OF SHRUBS AND GROUNDCOVERS SHALL BE NATIVE TO THE PUGET SOUND REGION.

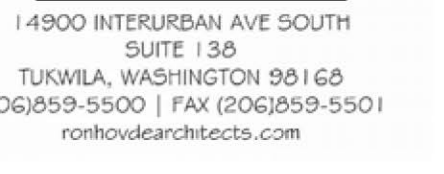
**LANDSCAPE TABULATIONS**

LOT B PARKING LOT AREA:	1,112 SF
LOT B PARKING LOT LANDSCAPE AREA:	222 SF (19%)
LOT C PARKING LOT AREA:	9,204 SF
LOT C PARKING LOT LANDSCAPE AREA:	1,714 SF (18%)
LOT D PARKING LOT AREA:	13,325 SF
LOT D PARKING LOT LANDSCAPE AREA:	4,863 SF (36%)
LOT E PARKING LOT AREA:	11,219 SF
LOT E PARKING LOT LANDSCAPE AREA:	4,083 SF (36%)



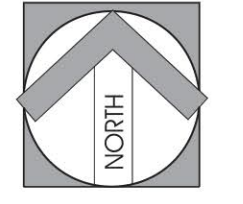
**CONCEPTUAL LANDSCAPE PLAN - LOTS B & C**

**DOS LAGOS MIXED-USE DEVELOPMENT**  
 PUYALLUP, WA



14800 INTERURBAN AVE SOUTH  
 SUITE 138  
 TUKWILA, WASHINGTON 98168  
 (206)959-5500 | FAX (206)959-5501  
 ronhovdearchitects.com

SCALE: 1"=20'  
 CDPC PROJECT NO. 21080  
 SEPTEMBER 24, 2024



conceptual design + planning company  
 1475 Soenic Drive, Suite 200  
 COSTA MESA, CA 92626  
 T: 949.399.0070  
 www.cdpc.com  
 COSTA MESA • CENTRAL COAST • LAS VEGAS

