



PLANT PALETTE

TREES

Symbol	Botanical Name	Common Name	Size & Spacing
	<i>Acer circinatum</i> *	Vine Maple	8'-10" H, 3 Stem min. Spacing per plan
	<i>Acer rubrum 'Scarlet'</i> *	Scarlet Sentinel Maple	2' Caliper Spacing per plan
	<i>Calocedrus decurrens</i> *	Incense Cedar	8'-10" H, Spacing per plan
	<i>Cercis canadensis</i> *	Eastern redbud	8'-10" H, 3 Stem min. Spacing per plan
	<i>Lagerstroemia f. 'Muskegoe'</i>	Lavender Cape Myrtle	1.5' Caliper Spacing per plan
	<i>Platanus a. 'Bloodgood'</i> *	London Planetree	2' Caliper Spacing per plan
	<i>Pseudotsuga menziesii</i> *	Douglas Fir	8'-10" H, Spacing per plan
	<i>Quercus rubra</i> *	Northern Red Oak	2' Caliper Spacing per plan
	<i>Thuja plicata</i> *	Western Red Cedar	6'-8" H, Spacing per plan
	<i>Ulmus americana 'Princeton'</i> *	Princeton Elm	2' Caliper Spacing per plan
	<i>Zelkova serrata</i>	Japanese Zelkova	2' Caliper Spacing per plan
		EXISTING TREE TO BE REMOVED	
		EXISTING TREE TO REMAIN	

SHRUBS/ GROUNDCOVERS

Symbol	Botanical Name	Common Name	On Center Spacing
	<i>Abelia grandiflora</i>	Edward Goucher	4' O.C.
	<i>Achillea millefolium 'Red Beauty'</i> *	Red Beauty Yarrow	2' O.C.
	<i>Aquilegia formosa</i> *	Western Columbine	3' O.C.
	<i>Arbutus unedo 'Compacta'</i> *	Compact Strawberry Tree	6' O.C.
	<i>Arctostaphylos uva-ursi 'Vancouver Jade'</i> *	Vancouver Jade Kinnikinnick	2.5' O.C.
	<i>Calamagrostis x acutiflora</i>	Karl Foerster Feather Grass	2.5' O.C.
	<i>Carex marowli 'Isis Dance'</i>	Isis Dance Variegated Sedge	2' O.C.
	<i>Cornus stolonifera</i> *	Redtwig Dogwood	4' O.C.
	<i>Fragaria chiloensis</i> *	Wild Strawberry	1.5' O.C.
	<i>Galium odoratum</i> *	Sweet Woodruff	1.5' O.C.
	<i>Gaultheria shallon</i> *	Salal	4.5' O.C.
	<i>Genista pilosa 'Vancouver Gold'</i>	Vancouver Gold Broom	3' O.C.
	<i>Helictotrichon sempervirens</i>	Blue Owl Grass	2' O.C.
	<i>Hydrangea macrophylla 'Nikko Blue'</i> *	Nikko Blue Hydrangea	4' O.C.
	<i>Hydrangea quercifolia</i> *	Oakleaf Hydrangea	8' O.C.
	<i>Lavandula angustifolia 'Munstead'</i>	Munstead Lavender	2.5' O.C.
	<i>Liriope muscari 'Big Blue'</i> *	Big Blue Liriope	18" O.C.
	<i>Miscanthus sinensis 'Adagio'</i>	Adagio Dwarf Maiden Grass	2.5' O.C.
	<i>Pennisetum alopecuroides 'Hornbeam'</i>	Hornbeam Fountain Grass	2.5' O.C.
	<i>Polystichum munifolium</i> *	Western Sword Fern	3' O.C.
	<i>Physocarpus opulifolius</i>	Ninebark	7.5' O.C.
	<i>Rosa x 'Scarlet Meidiland'</i>	Scarlet Meidiland Shrub Rose	3' O.C.
	<i>Rosa nutkana</i> *	Nootka Rose	7.5' O.C.
	<i>Sarcococca nuscifolia</i> *	Fragrant Sweet Box	3' O.C.
	<i>Spirea x burmalda 'Goldflame'</i> *	Goldflame Spirea	3' O.C.
	<i>Vaccinium ovatum</i> *	Evergreen Huckleberry	7.5' O.C.

SCREEN SHRUBS

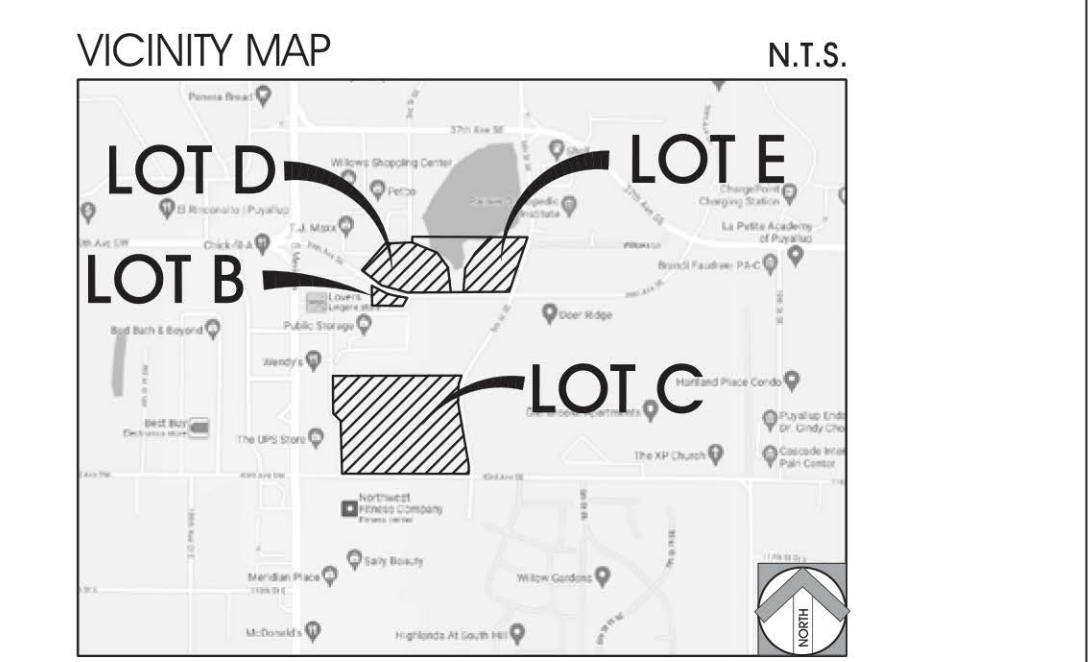
	<i>Euonymus alatus 'Compactus'</i> *	Compact Burning Bush	3' O.C.
	<i>Ligustrum japonicum 'Texanum'</i> *	Waxleaf Privet	3' O.C.
	<i>Mahonia aquifolium 'Compacta'</i> *	Compact Oregon Grape	3' O.C.

(*) INDICATES NATIVE PLANT SPECIES

- #### NOTES
- PLANT MATERIAL NOT LISTED MAY BE USED, SUBJECT TO APPROVAL BY THE CITY.
 - ALL PLANTING MATERIAL SHALL MEET OR EXCEED THE MOST RECENT STANDARDS ESTABLISHED IN THE PUBLICATION 'AMERICAN STANDARDS FOR NURSERY STOCK', ANSI Z60.1-2004 OR CURRENT SUCCESSOR OF THE AMERICAN ASSOCIATION OF NURSERYMEN (ANN).
 - ALL LANDSCAPE AREAS SHALL RECEIVE AUTOMATIC IRRIGATION SYSTEM.
 - ALL LANDSCAPE INSTALLATION SHALL BE PERMANENTLY MAINTAINED.
 - A MINIMUM OF 25% OF SHRUBS AND GROUNDCOVERS SHALL BE NATIVE TO THE PUGET SOUND REGION.

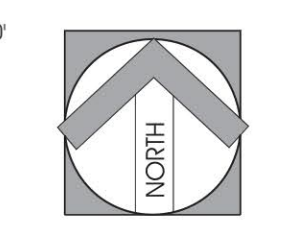
LANDSCAPE TABULATIONS

LOT B PARKING LOT AREA:	1,112 SF
LOT B PARKING LOT LANDSCAPE AREA:	222 SF (19%)
LOT C PARKING LOT AREA:	9,204 SF
LOT C PARKING LOT LANDSCAPE AREA:	1,714 SF (18%)
LOT D PARKING LOT AREA:	13,325 SF
LOT D PARKING LOT LANDSCAPE AREA:	6,861 SF (51%)
LOT E PARKING LOT AREA:	11,219 SF
LOT E PARKING LOT LANDSCAPE AREA:	4,083 SF (36%)



CONCEPTUAL LANDSCAPE PLAN - LOT D
DOS LAGOS MIXED-USE DEVELOPMENT
PUYALLUP, WA

SCALE: 1"=20'
CDPC PROJECT NO. 21080
SEPTEMBER 24, 2024



conceptual design + planning company
1675 scenic Drive, Suite 200
Costa Mesa, CA 92626
T: 949.399.0870
www.cdpc.com





PLANT PALETTE

TREES

Symbol	Botanical Name	Common Name	Size & Spacing
	<i>Acer circinatum</i> *	Vine Maple	8'-10' H, 3 Stem min. Spacing per plan
	<i>Acer rubrum</i> 'Scarlet'	Scarlet Sentinel Maple	2" Caliper Spacing per plan
	<i>Calocedrus decurrens</i> *	Incense Cedar	8'-10' H, Spacing per plan
	<i>Cercis canadensis</i> *	Eastern redbud	8'-10' H, 3 Stem min. Spacing per plan
	<i>Lagerstroemia f. Muskogee</i> *	Lavender Crape Myrtle	1.5" Caliper Spacing per plan
	<i>Platanus a. 'Bloodgood'</i> *	London Planetree	2" Caliper Spacing per plan
	<i>Pseudotsuga menziesii</i> *	Douglas Fir	8'-10' H, Spacing per plan
	<i>Quercus rubra</i> *	Northern Red Oak	2" Caliper Spacing per plan
	<i>Thuja plicata</i> *	Western Red Cedar	6'-8' H, Spacing per plan
	<i>Ulmus americana</i> 'Princeton'	Princeton Elm	2" Caliper Spacing per plan
	<i>Zelkova serrata</i>	Japanese Zelkova	2" Caliper Spacing per plan
		EXISTING TREE TO BE REMOVED	
		EXISTING TREE TO REMAIN	

SHRUBS/ GROUNDCOVERS

Symbol	Botanical Name	Common Name	On Center Spacing
	<i>Abelia grandiflora</i> 'Edward Goucher'	Glossy Abelia	4' O.C.
	<i>Achillea millefolium</i> 'Red Beauty'	Red Beauty Yarrow	2' O.C.
	<i>Aquilegia formosa</i> *	Western Columbine	3' O.C.
	<i>Arbutus unedo</i> 'Compacta'	Compact Strawberry Tree	6' O.C.
	<i>Arctostaphylos uva-ursi</i> 'Vancouver Jade'	Vancouver Jade Kinnikinnick	2.5' O.C.
	<i>Calmagostis x acutiflora</i>	Kaif Foerster Feather Grass	2.5' O.C.
	<i>Carex marshallii</i> 'Iron Dance'	Iron Dance Variegated Sedge	2' O.C.
	<i>Cornus stolonifera</i> *	Redtwig Dogwood	4' O.C.
	<i>Fragaria chiloensis</i> *	Wild Strawberry	1.5' O.C.
	<i>Galium odoratum</i> *	Sweet Woodruff	1.5' O.C.
	<i>Gaultheria shallon</i> *	Salal	4.5' O.C.
	<i>Genista pilosa</i> 'Vancouver Gold'	Vancouver Gold Broom	3' O.C.
	<i>Helictotrichon sempervirens</i>	Blue Owl Grass	2' O.C.
	<i>Hydrangea macrophylla</i> 'Nikko Blue'	Nikko Blue Hydrangea	4' O.C.
	<i>Hydrangea quercifolia</i> *	Oakleaf Hydrangea	8' O.C.
	<i>Lavandula angustifolia</i> 'Munstead'	Munstead Lavender	2.5' O.C.
	<i>Liriope muscari</i> 'Big Blue'	Big Blue Liriope	18" O.C.
	<i>Miscanthus sinensis</i> 'Adagio'	Adagio Dwarf Maiden Grass	2.5' O.C.
	<i>Pennisetum alopecuroides</i> 'Hornet'	Hornet Fountain Grass	2.5' O.C.
	<i>Polystichum munifolium</i> *	Western Sword Fern	3' O.C.
	<i>Physocarpus opulifolius</i>	Ninebark	7.5' O.C.
	<i>Rosa x 'Scarlet Meidiland'</i>	Scarlet Meidiland Shrub Rose	3' O.C.
	<i>Rosa nutkana</i> *	Nootka Rose	7.5' O.C.
	<i>Sarcococca nuscifolia</i> *	Fragrant Sweet Box	3' O.C.
	<i>Spiraea x bumalda</i> 'Goldflame'	Goldflame Spiraea	3' O.C.
	<i>Vaccinium ovatum</i> *	Evergreen Huckleberry	7.5' O.C.

SCREEN SHRUBS

	<i>Euonymus alatus</i> 'Compactus'	Compact Burning Bush	3' O.C.
	<i>Ligustrum japonicum</i> 'Texanum'	Waxleaf Privet	3' O.C.
	<i>Mahonia aquifolium</i> 'Compacta'	Compact Oregon Grape	3' O.C.

(*) INDICATES NATIVE PLANT SPECIES

NOTES

- PLANT MATERIAL NOT LISTED MAY BE USED, SUBJECT TO APPROVAL BY THE CITY.
- ALL PLANTING MATERIAL SHALL MEET OR EXCEED THE MOST RECENT STANDARDS ESTABLISHED IN THE PUBLICATION 'AMERICAN STANDARDS FOR NURSERY STOCK', ANSI Z60.1-2004 OR CURRENT SUCCESSOR OF THE AMERICAN ASSOCIATION OF NURSERYMEN (ANN).
- ALL LANDSCAPE AREAS SHALL RECEIVE AUTOMATIC IRRIGATION SYSTEM.
- ALL LANDSCAPE INSTALLATION SHALL BE PERMANENTLY MAINTAINED.
- A MINIMUM OF 25% OF SHRUBS AND GROUNDCOVERS SHALL BE NATIVE TO THE PUGET SOUND REGION

LANDSCAPE TABULATIONS

LOT B PARKING LOT AREA:	1,112 SF
LOT B PARKING LOT LANDSCAPE AREA:	222 SF (19%)
LOT C PARKING LOT AREA:	9,204 SF
LOT C PARKING LOT LANDSCAPE AREA:	1,714 SF (18%)
LOT D PARKING LOT AREA:	13,325 SF
LOT D PARKING LOT LANDSCAPE AREA:	4,861 SF (36%)
LOT E PARKING LOT AREA:	11,219 SF
LOT E PARKING LOT LANDSCAPE AREA:	4,083 SF (36%)

