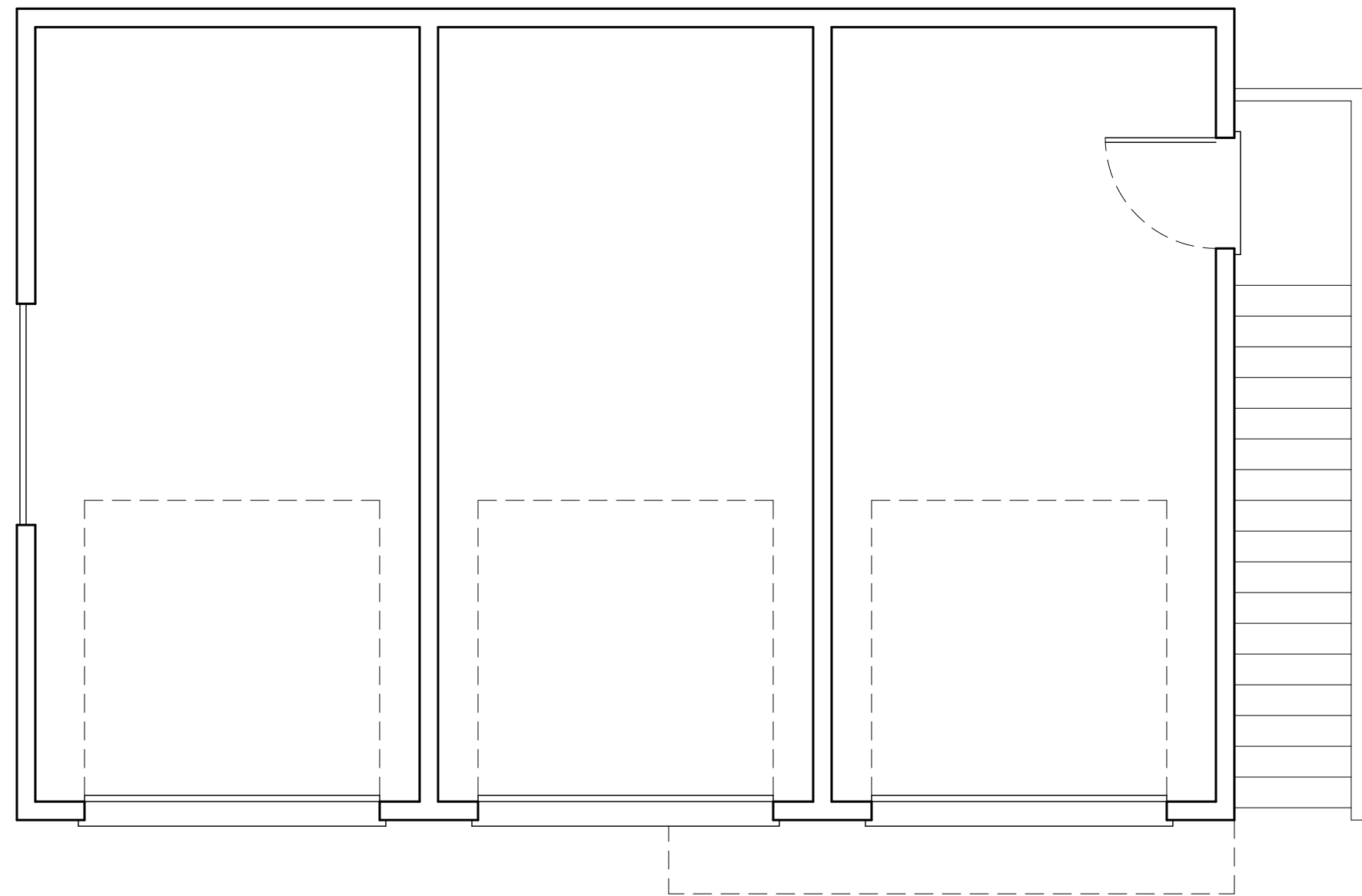


## GARAGE/DADU UPPER FLOOR PLAN

$$1/4' = 1' - \emptyset'$$

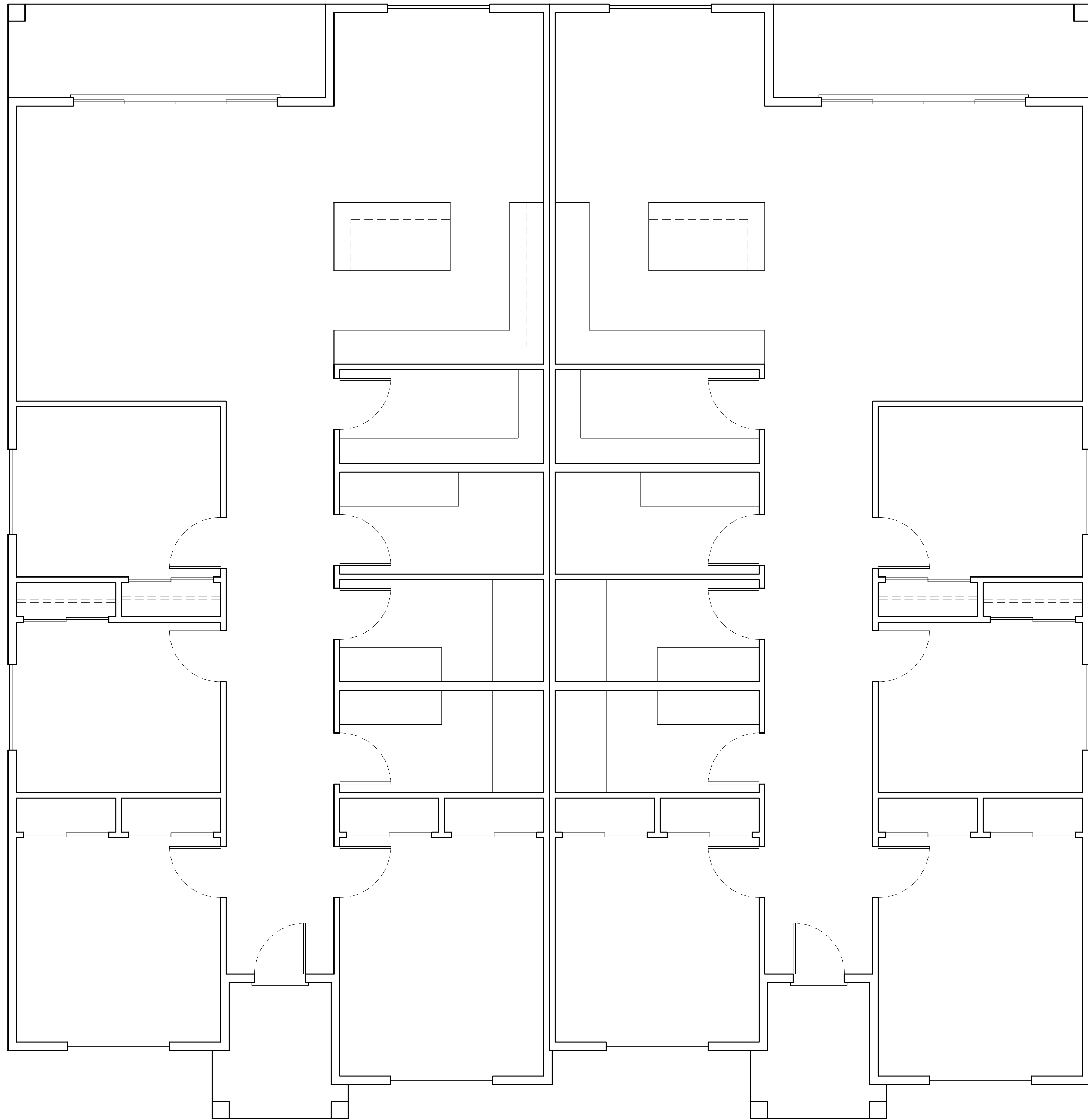
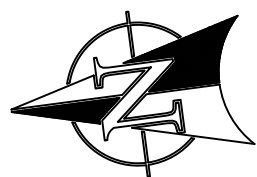
- 5 MIN. AIR EXCHANGE CEILING FANS PER PLAN (P)  
110 VOLT SMOKE DETECTOR HARD WIRED (S)  
INTERCONNECTED WITH BATTERY BACK-UP (C)  
CARBON MONOXIDE DETECTOR (T)  
TEMPERED/SAFETY GLASS (\*)  
PROVIDE 1" UNDERCUT ON ALL BEDROOM DOORS



## GARAGE/DADU MAIN FLOOR PLAN

$$1/4' = 1' - \emptyset'$$

- 5 MIN. AIR EXCHANGE CEILING FANS PER PLAN (P)  
110 VOLT SMOKE DETECTOR HARD WIRED (S)  
INTERCONNECTED WITH BATTERY BACK-UP (C)  
CARBON MONOXIDE DETECTOR (T)  
TEMPERED/SAFETY GLASS (\*)  
PROVIDE 1" UNDERCUT ON ALL BEDROOM DOORS

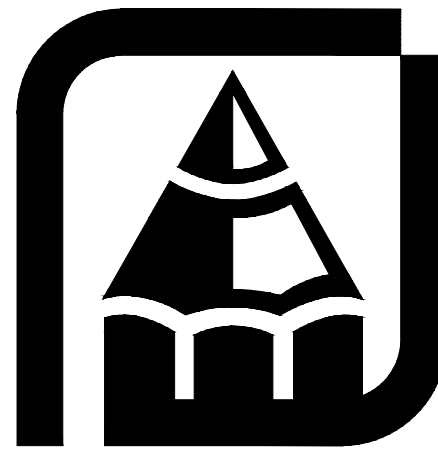


### DUPLEX MAIN FLOOR PLAN

$$1/4' = 1' - \emptyset'$$

FLOOR PLAN CALCULATIONS	
DUPLEX UNIT 1:	1851 SF.
DUPLEX UNIT 2:	1851 SF.
DADU:	756 SF.
TOTAL # FTG (HEATED):	4,410 SF.
GARAGE:	726 SF.

- 5 MIN. AIR EXCHANGE CEILING FANS PER PLAN (P)  
110 VOLT SMOKE DETECTOR HARD WIRED (S)  
INTERCONNECTED WITH BATTERY BACK-UP (C)  
CARBON MONOXIDE DETECTOR (T)  
TEMPERED/SAFETY GLASS (\*)  
PROVIDE 1" UNDERCUT ON ALL BEDROOM DOORS

[illegible]

Copyright © 2024, Rueppell, Inc.

**Rueppell**  
**Home Design**

**Plan:**  
Job#: 10th St  
Date: 12/10/2024  
Revision Date:  
Drawn by: BA  
Phone: (253) 251-2501

**[ A-1 ]**

1. CONTRACTOR SHALL VERIFY ALL NOTES, MATERIALS AND CONDITIONS PRIOR TO CONSTRUCTION
2. CAULK ALL EXTERIOR JOINTS AND PENETRATIONS.
3. PROVIDE GALVANIZED OR ANODIZED SHEET METAL FLASHING AND COUNTERFLASHING AT ALL PENETRATIONS.
4. PROVIDE CONTINUOUS GUTTERS AND DOWNSPOUTS AT ALL EAVES, TYPE \_\_\_\_\_
5. PROVIDE HEADER FLASHING AT ALL DOORS, WINDOWS, AND SHUTTERS PER DETAIL.
6. ALL PAPER AND TAPE TO LAP FROM TOP DOWN.
7. HOLD ALL SIDING MATERIAL  $1\frac{1}{2}$ " OFF ROOF.
8. HOLD ALL SIDING MATERIAL 6" OFF FINISHED GRADE.
9. SOFFIT ALL FLAT AREAS W/  $1\frac{1}{2}$ " OVERHANG AT HORIZONTAL EDGES.
10. METAL FLASHING AT ALL TRIM AND HORIZONTAL SIDING BREAKS.
11. RUN SECOND LAYER OF TAPE PAPER VERTICAL AT INTERIOR AND EXTERIOR CORNERS UNLESS TAPE PAPER IS CONTINUOUS.
12. FOUNDATION PAPER IS TO BE SPACED PER PLAN.
13. ALL FOUNDATION VENTS ON STREET SIDE OF HOUSE (IE. FRONT AND/ OR) SIDE AND GABLE END AND GARAGE FRESH AIR VENTS TO BE LOUVERED.
14. ALL LIGHT BOLTS ON FACADE TO BE FURRED OUT AN ADDITIONAL  $1\frac{1}{2}$ ".
15. GUTTERS TO LAP UNDER DRIP EDGE AT GABLE ENDS, HOLD  $1\frac{1}{2}$ " DRIP EDGE CUT  $\frac{1}{4}$ " AWAY FROM FASCIA TO EXCEPT GUTTERS TO LAP UNDERNEATH.
16. ALL TRIM WORK TO BE APPLIED PRIOR TO SIDING MATERIALS (SIDING TO BUTT UP TO TRIM WORK).

## GENERAL PLAN NOTES

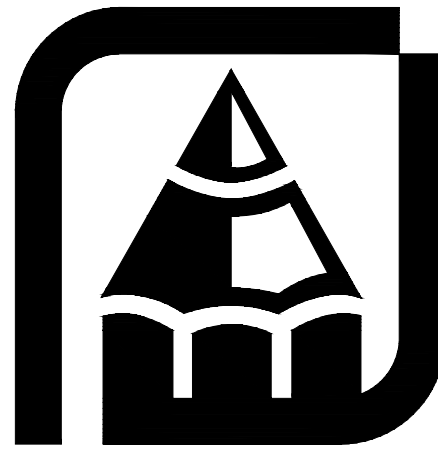
ALL ESCAPE OR RESCUE WINDOWS SHALL HAVE A MINIMUM NET CLEAR OPENABLE AREA OF 5.7 SQUARE FEET. THE MINIMUM NET CLEAR OPENABLE HEIGHT DIMENSION SHALL BE 24 INCHES. THE MINIMUM NET CLEAR OPENABLE WIDTH DIMENSION SHALL BE 20 INCHES. EGRESS WINDOWS SHALL HAVE A FINISHED CLEAR OPENING HEIGHT NOT MORE THAN 44 INCHES ABOVE THE FLOOR.



DUPLEX FRONT (W) ELEVATION



GARAGE/DADU FRONT (W) ELEVATION



Copyright © 2024, Rueppell, Inc.

# Rueppell

## Home Design

**Plan:**  
Job#: 10th St  
Date: 12/10/2024  
Revision Date:  
Drawn by: BA  
Phone: (253) 251-

[ A-2 ]