

161



167



BRIDGE AND LANDSCAPE ARCHITECTURAL STANDARDS

Roadside Restoration Approved Seed Lists

Seeding Guidance

Plant a variety of grasses and native wildflowers throughout the project site. Strive for a diversity of plants with a focus on consecutive bloom times which provide forage for pollinators throughout the growing season. Work with local and regional seed suppliers to determine a well balanced blend. For all seed mixes, seeds shall be certified 'Weed Free', indicating there are no noxious or nuisance weeds in the seed. All seed mixes shall be approved by the Olympic Region Landscape Architect.

The EROSION CONTROL GRASS MIX shall provide the following benefits:

- Erosion control
- Low-growing
- Drought tolerant

The EROSION CONTROL GRASS MIX shall be applied in the zones shown on the Conceptual Landscape Plans. Colonial Bentgrass and White Dutch Clover shall not exceed 20% of seed mix composition.

The POLLINATOR SEED MIX shall provide the same benefits as the EROSION CONTROL GRASS MIX with the following additional benefits:

- Native to the region
- Pollinator with 2 or 3 different species that bloom at the same time, as well as plants that flower at different times throughout the year
- Aim to have nectar and pollen available from spring through fall

The POLLINATOR SEED MIX shall be applied in the zones shown on the Conceptual Landscape Plans. Grasses within the mix shall be no more than 70% of the overall seed mix for pollinator areas.

The ROADSIDE RESTORATION APPROVED SEED LISTS shall contain the minimum number of specie types listed in the tables for specific applications.

Hydroseeding Operation

Hydroseeding shall occur according to the following two-step operation:

Step 1 – Apply seed and tracer. If hydromulch is used as a tracer, then apply it at a rate of 500 pounds per acre. Thoroughly mix seeds when more than one kind is to be used. Seed slurry shall be applied within 1 hour of mixing.

Step 2 – Apply mulch, tackifier, and starter fertilizer. Hydromulch, if used as a tracer in Step 1, shall be reduced to apply the overall specified

hydromulch rate. Hydromulch shall be applied at a rate of 2,700 pounds per acre when a tracer is not used in Step 1 and at a rate of 2,200 pounds per acre when tracer is used.

Approved Seed Mix Lists

Lawn Seed Mix

Botanical Name	Common Name
<i>Lolium perenne</i>	Perennial Ryegrass
<i>Poa pratensis</i>	Kentucky Bluegrass
<i>Festuca arundinacea</i>	Tall Fescue

Native Grass Filter Strip and Roadside Seed Mix

Botanical Name	Common Name
<i>Achillea millefolium</i>	Common Yarrow
<i>Elymus glaucus</i>	Blue Wildrye
<i>Festuca rubra</i> var. <i>rubra</i>	Red Fescue
<i>Geum macrophyllum</i>	Large-leaved Avens
<i>Koeleria macrantha</i>	Prairie Junegrass
<i>Poa palustris</i>	Poa Palustris
<i>Triticum aestivum</i> x <i>Elytrigia elongata</i>	Regreen

Erosion Control Grass Seed Mix

(Choose a minimum of 4 species.)

Botanical Name	Common Name
<i>Agrostis tenuis</i>	Colonial Bentgrass
<i>Deschampsia cespitosa</i>	Tufted Hairgrass
<i>Festuca idahoensis</i> var. <i>roemerii</i>	Roemer's Fescue
<i>Festuca ovina</i> <i>duriuscula</i>	Hard Fescue
<i>Festuca rubra</i>	Red Fescue
<i>Koeleria macrantha</i>	Prairie Junegrass
<i>Lolium perenne</i>	Perennial Rye
<i>Poa secunda</i>	Sherman Big Bluegrass
<i>Trifolium repens</i>	White Dutch Clover

Pollinator Seed Mix

(Choose a minimum of 3 grass species and 12 pollinator species.)

Botanical Name	Common Name	Bloom Time
GRASSES		
<i>Deschampsia elongata</i>	Slender Hairgrass	N/A
<i>Elymus glaucus</i>	Blue Wildrye	N/A
<i>Festuca idahoensis</i> var. <i>roemerii</i>	Roemer's Fescue	N/A
<i>Festuca rubra</i> 'Molate'	Festuca Rubra 'Molate'	N/A
<i>Koeleria macrantha</i>	Prairie Junegrass	N/A
<i>Poa palustris</i>	Fowl Bluegrass	N/A
POLLINATORS		
<i>Achillea millefolium</i>	Western Yarrow	Mid
<i>Anaphalis margaritacea</i>	Pearly Everlasting	Mid
<i>Camassia quamash</i>	Camas	Early
<i>Chamerion angustifolium</i>	Fireweed	Late Summer
<i>Eschscholzia californica</i>	California Poppy	Early
<i>Eriophyllum lanatum</i>	Oregon Sunshine	Mid
<i>Erigeron speciosus</i>	Showy Fleabane	Mid
<i>Erigonium umbellatum</i>	Sulfer Buckwheat	Late Summer
<i>Gaillardia aristata</i>	Blanketflower	Mid
<i>Gilia capitata</i>	Blue-Thimble-Flower	Early
<i>Lupinus bicolor</i>	Bicolor Lupine	Early
<i>Lupinus lepidus</i>	Pacific Lupine	Mid
<i>Lomatium nudicaule</i>	Barestem Biscuitroot	Mid
<i>Lomatium utriculatum</i>	Spring Gold	Mid
<i>Lupinus albicaulis</i>	Sickle-keeled Lupine	Mid
<i>Potentilla gracillis</i>	Slender Cinquefoil	Late Summer
<i>Prunella vulgaris</i>	Self Heal	Mid
<i>Rudbeckia occidentalis</i>	Western Black-eyed Susan	Late Summer
<i>Sidalcea virgata</i>	Dwarf Checkermallow	Early
<i>Solidago missouriensis</i>	Prairie Goldenrod	Late Summer
<i>Symphyotrichum subspicatum</i> var. <i>Subspicatum</i>	Douglas Aster	Late Summer

Roadside Restoration Approved Plant Lists

Native Trees

The proposed native tree species are drought tolerant in nature and are proven to have structural integrity.

The approved tree list is to be used for both Trees & Shrubs and the Trees & Pollinator plant mix applications shown in the Conceptual Landscape Plans.

The tree species selected from the WSDOT ROADSIDE RESTORATION PLANT LIST shall contain a minimum of 7 conifers and all deciduous species from the approved lists.

No more than 30% overall deciduous and 70% coniferous is required.

Native Trees (Conifers)

Botanical Name	Common Name
Abies grandis	Grand Fir
Calocedrus decurrens	Incense Cedar
Chamaecyparis lawsoniana	Port Orford Cedar
Larix occidentalis	Western Larch
Pinus contorta var. latifolia	Lodgepole Pine
Pinus contorta	Shore Pine
Pinus monticola	Western White Pine
Pinus ponderosa var. benthamiana	Pacific Ponderosa Pine
Pseudotsuga menziesii*	Douglas Fir
Sequoia giganteum	Giant Sequoia
Thuja plicata*	Western Red Cedar
Tsuga heterophylla	Western Hemlock

* Limit Douglas Fir and Western Red Cedar planting up to 10% each (20% total max.) of overall canopy planting. Source seed stock from regions that align with future climate warming predictions.

Native Trees (Deciduous)

Botanical Name	Common Name
Acer circinatum (multi-stemmed)	Vine Maple
Acer glabrum	Rocky Mountain Maple
Amelanchier alnifolia*	Saskatoon Serviceberry
Cornus nuttallii	Pacific Dogwood
Crataegus douglasii	Douglas Hawthorn
Frangula purshiana	Cascara
Prunus emarginata	Bitter Cherry
Quercus garryana	Oregon White Oak

* Single stem specimen.

Streetscape/Street Tree Approved Plant Lists

The sidewalk landscape character shall provide a uniform continuation and seamless blend with existing roadway planting where present. Streetscape improvements are to be made at the Interurban South Trailhead at 20th St E. Street trees are to be provided along 20th St E, 26th St E, Valley Ave E and SR 167 interchange, Valley Ave E and Freeman Road.

The STREETSCAPE/STREET TREE APPROVED PLANT LIST shall contain a minimum number of species listed in the tables for specific applications. Deciduous trees shall be as required for street trees and accent as approved by the jurisdiction.

Grasses

Botanical Name	Common Name
Calamagrostis x acutiflora 'Karl Foerster'*	Feather Reed Grass
Festuca idahoensis 'Siskiyou Blue'	Siskiyou Blue Idaho Fescue
Pennisetum alopecuroides*	Fountain Grass
Sesleria autumnalis	Autumn Moor Grass

* Plants added not listed in the Roadside Restoration Master Plan

Ground Covers

(Choose a minimum of 3 species.)

Botanical Name	Common Name
Arctostaphylos uva-ursi	Kinnikinnick
Ceanothus gloriosus 'Heart's Desire'	Heart's Desire Ceanothus
Cotoneaster salicifolius 'Repens'	Creeping Willowleaf Cotoneaster
Fragaria chiloensis 'Lipstick'	Lipstick Ornamental Strawberry
Helianthemum 'Wisley Pink'	Wisley Pink Sunrose
Juiperus horizontalis	Creeping Juniper
Mahonia repens	Creeping Oregon Grape
Rubus calycinoides 'Emerald Carpet'	Emerald Carpet Creeping Bramble

Ground Covers

The proposed ground cover species shall be used within 3 feet of the shared-use path on slopes less than 6:1. They will provide a safe buffer by improving visibility, reduce maintenance while providing erosion control and improved water quality.

Vines

Vines shall be planted at 6 feet on center at the base of structures to form a vegetative mat on the face of the walls. This vegetative mat will reduce the exposed concrete surface, reducing the amount of graffiti the maintenance crew will need to re-paint.

Vines at Bridge Abutments and Retaining Walls

Botanical Name	Common Name
Parthenocissus tricuspidata 'Vetchii'	Boston Ivy
Parthenocissus quinquefolia	Virginia Creeper

Shrubs

(Choose a minimum of 5 species.)

Botanical Name	Common Name
Abelia x grandiflora 'Kaleidoscope'	Dwarf Abelia
Cornus sericea 'Kelsey'	Kelsey Dogwood
Daphne cneorum	Rose Daphne
Hydrangea macrophylla 'Pia'	Dwarf Hydrangea
Lavandula angustifolia	Lavender
Mahonia aquifolium 'Compacta'	Compact Oregon Grape
Mahonia nervosa	Longleaf Mahonia
Perovskia atriplicifolia 'Blue Jean Baby'	Blue Jean Baby Russian Sage
Physocarpus opulifolius 'Little Devil'	Dwarf Ninebark
Pinus mugo var. pumilio	Dwarf Mugo Pine
Rhus aromatic 'Gro-Low'	Gro-Low Fragrant Sumac
Spiraea japonica 'Little Princess'	Dwarf Spirea

Trees (Conifers)

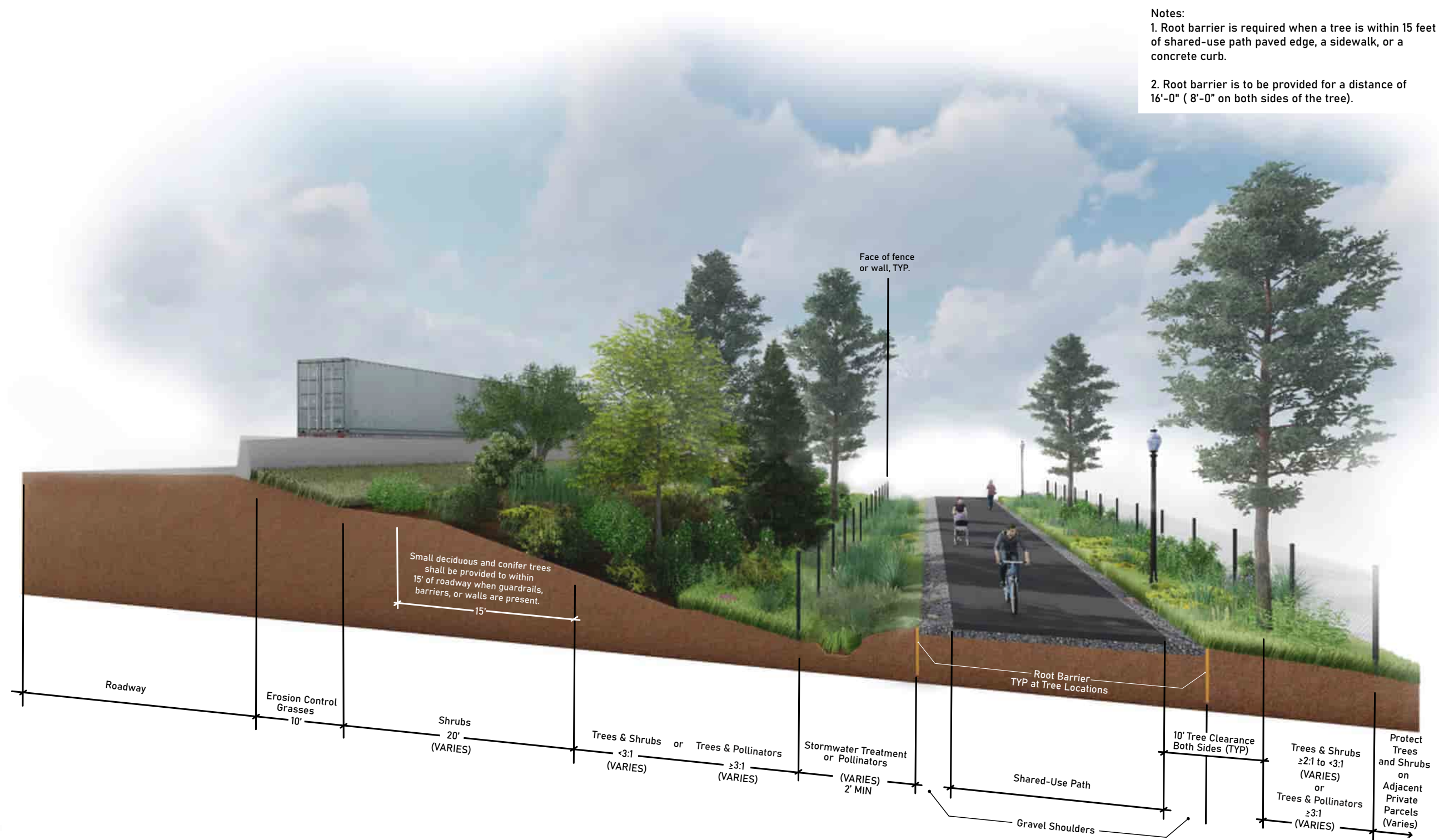
Botanical Name	Common Name
Abies koreana	Korean Fir
Calocedrus decurrens	Incense Cedar
Cedrus deodara	Deodar Cedar
Chamaecyparis nootkatensis	Alaska Cedar
Picea omorika	Serbian Spruce
Pinus flexilis	Limber Pine
Pinus thunbergii	Japanese Black Pine

Trees (Deciduous)

(Choose a minimum of 7 species for street trees.)

Botanical Name	Common Name
Acer campestre	Hedge Maple
Acer nigrum 'Green Column'	Green Column Black Maple
Acer rubrum 'Bowhall'	Bowhall Maple
Acer rubrum 'Scarlet'	Scarlet Sentinel Maple
Acer saccharum 'Columnare'	Columnar Sugar Maple
Acer x freemanii 'Autumn Blaze'	Autumn Blaze Maple
Carpinus betulus 'Fastigiata'	Pyramidal European Hornbeam
Cornus 'Eddie's White Wonder'	Eddie's White Wonder Dogwood
Fagus sylvatica 'Riversii'	Rivers European Beech
Fraxinus americana 'Autumn Applause'	Autumn Applause Ash
Fraxinus pennsylvanica 'Patmore'	Patmore Ash
Ginkgo biloba 'Autumn Gold'	Autumn Gold Ginkgo
Ginkgo biloba 'Princeton Sentry'	Princeton Sentry Ginkgo
Gleditsia triacanthos var. inermis	Thornless Honeylocust
Nyssa sylvatica 'Haymanred'	Red Rage Tupelo
Platanus x acerfolia 'Liberty'	London Planetree
Quercus phellos	Willow Oak
Quercus rubra	Northern Red Oak
Ulmus x 'Frontier'	Frontier Elm
Zelkova serrata 'Village Green'	Village Green Zelkova

Typical Shared-Use Path Section – Section L



Conceptual Landscape Plans Key Map

Conceptual Landscape Plan Maps for the SR 167/I-5 to SR 161 – New Expressway Project are numbered sequentially from west to east along the freeway alignment. Refer to numbers for supporting adjacent maps. Refer to map legend at the bottom for description of typical surface features for all maps.

The Conceptual Landscape Plan Maps have been updated to reflect design changes from those shown in the Puget Sound Gateway Program, SR 167 Completion Project Roadside Restoration Master Plan.

MAP LEGEND

	RIGHT-OF-WAY
	4-WIRE FENCE
	CHAIN LINK FENCE
	GATE
	RETAINING WALL
	BRIDGE
	GUARDRAIL
	BARRIER
	CUT/FILL SLOPES
	PROPOSED GRADES

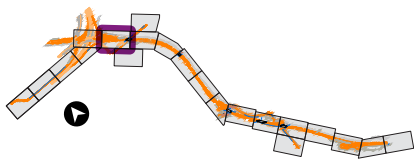


Select individual map number to hyperlink to the Conceptual Landscape Plan Map page.
Click on “PLANS KEY MAP” button at the bottom to return to Plans Key Map.

Plan Map 6a

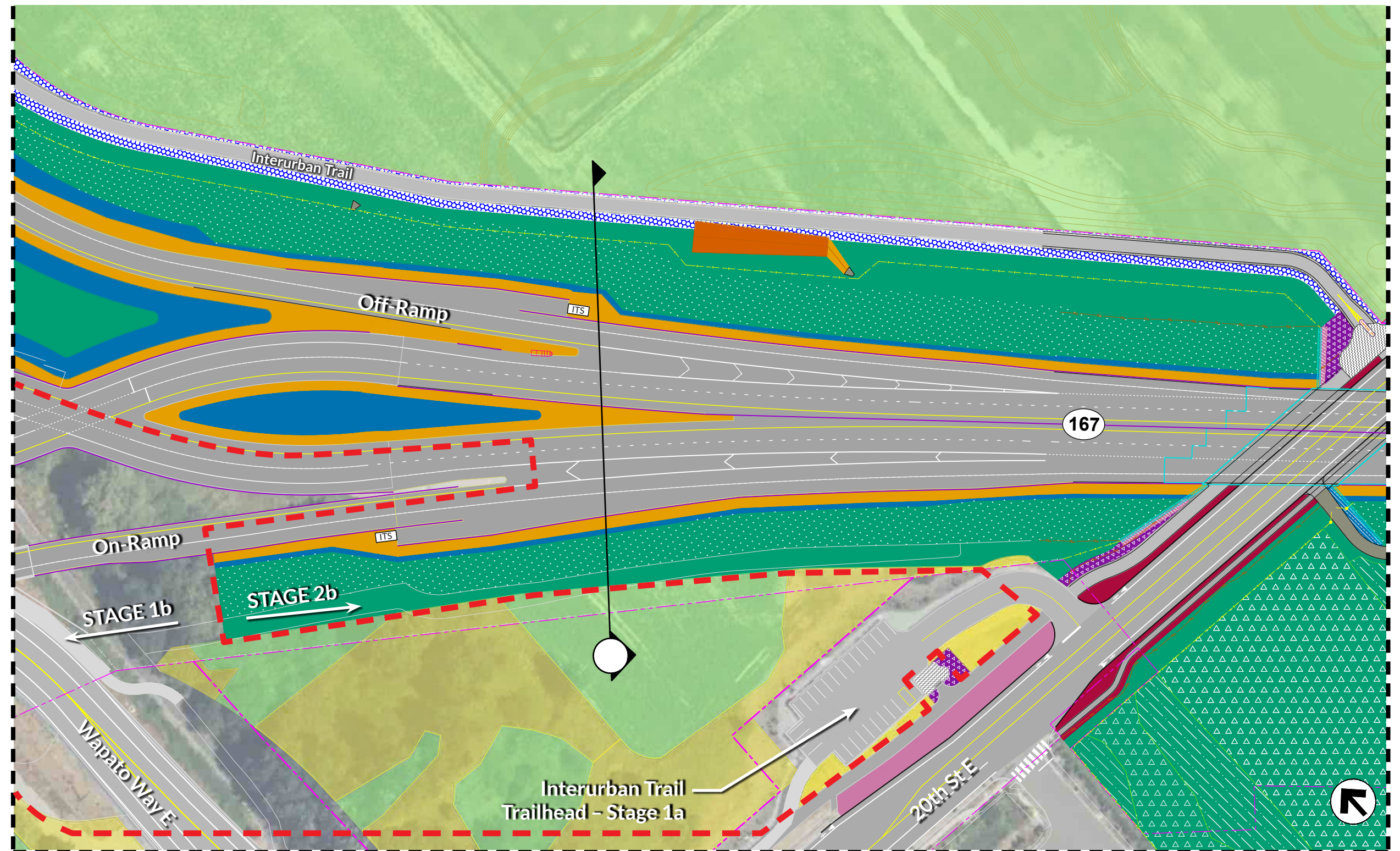
Conceptual Landscape Plan

KEY MAP



LEGEND

- LAWN
- STREET TREES AND LAWN
- EROSION CONTROL GRASSES
- SHRUBS
- DETERRENT SHRUBS
- POLLINATORS
- TREES & POLLINATORS ≥3:1
- TREES & SHRUBS ≥2:1 TO <3:1
- STREETScape PLANTS
- STREETScape DETERRENT SHRUBS
- STORMWATER TREATMENT
- FORESTED WETLAND
- SCRUB SHRUB WETLAND
- RIPARIAN FOREST
- RIPARIAN RESTORATION
- RIPARIAN SHRUBS
- PRESERVATION AREA
- WETLAND PRESERVATION
- ETHNOBOTANICAL PLANTING OR OTHER (See PAUDP)
- NO PLANTING
- GRAVEL
- ASHLAR STAMPED CONCRETE
- TRAIL SPECIALTY PAVING (SEE PAUDP)
- ITS CABINET
- DRAINAGE OUTFALL



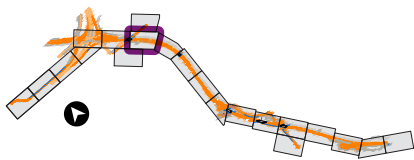
See Conceptual Landscape Plans Key Map for MAP LEGEND.

Scale: 1" = 100'

Plan Map 7a

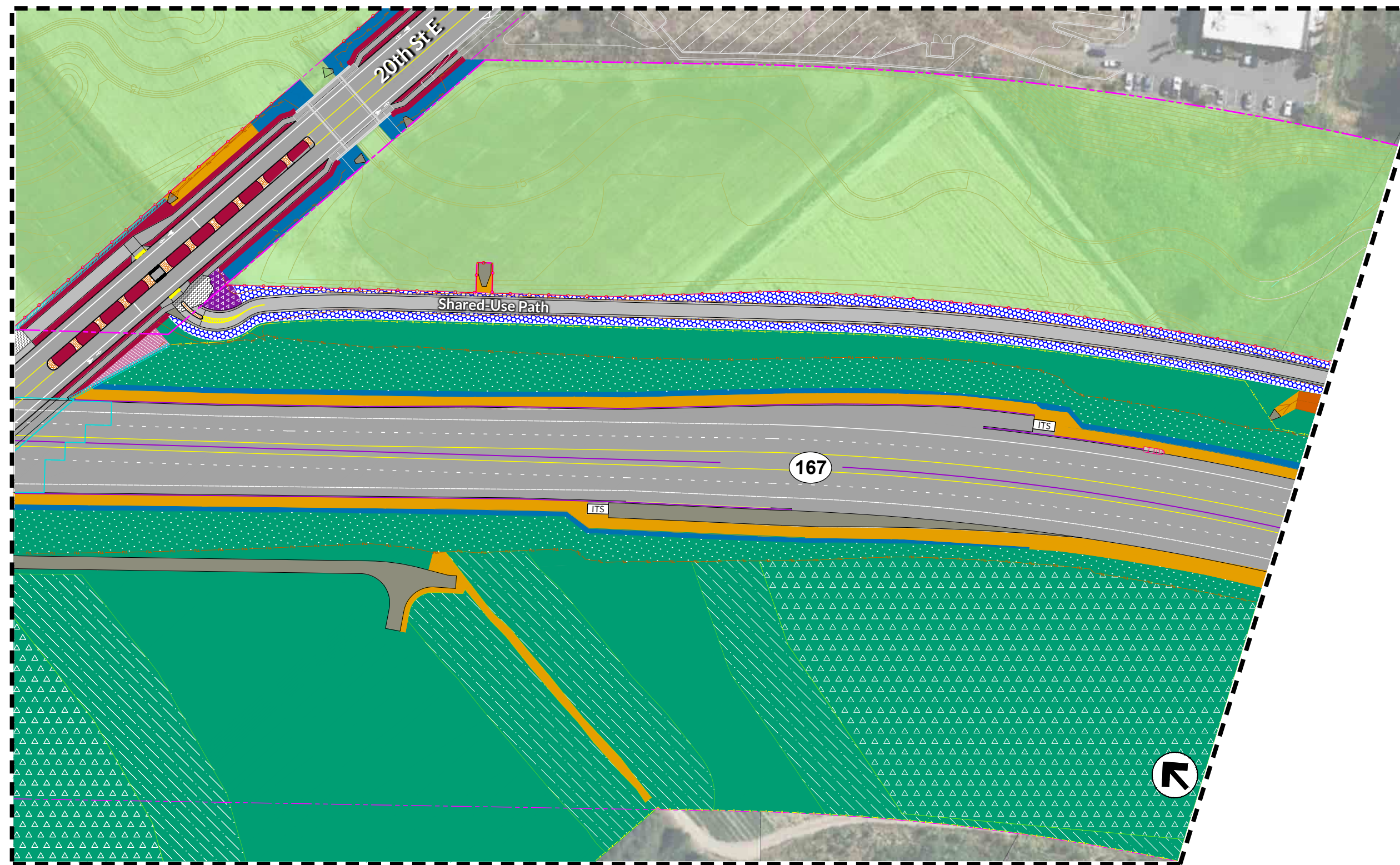
Conceptual Landscape Plan

KEY MAP



LEGEND

- LAWN
- STREET TREES AND LAWN
- EROSION CONTROL GRASSES
- SHRUBS
- DETERRENT SHRUBS
- POLLINATORS
- TREES & POLLINATORS $\geq 3:1$
- TREES & SHRUBS $\geq 2:1$ TO $< 3:1$
- STREETSCAPE PLANTS
- STREETSCAPE DETERRENT SHRUBS
- STORMWATER TREATMENT
- FORESTED WETLAND
- SCRUB SHRUB WETLAND
- RIPARIAN FOREST
- RIPARIAN RESTORATION
- RIPARIAN SHRUBS
- PRESERVATION AREA
- WETLAND PRESERVATION
- ETHNOBOTANICAL PLANTING OR OTHER
(See PAUDP)
- NO PLANTING
- GRAVEL
- ASHLAR STAMPED CONCRETE
- TRAIL SPECIALTY PAVING (SEE PAUDP)
- ITS CABINET
- DRAINAGE OUTFALL



See Conceptual Landscape Plans Key Map for MAP LEGEND.

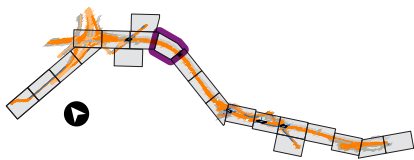
Scale: 1" = 100'

Plan Map

8

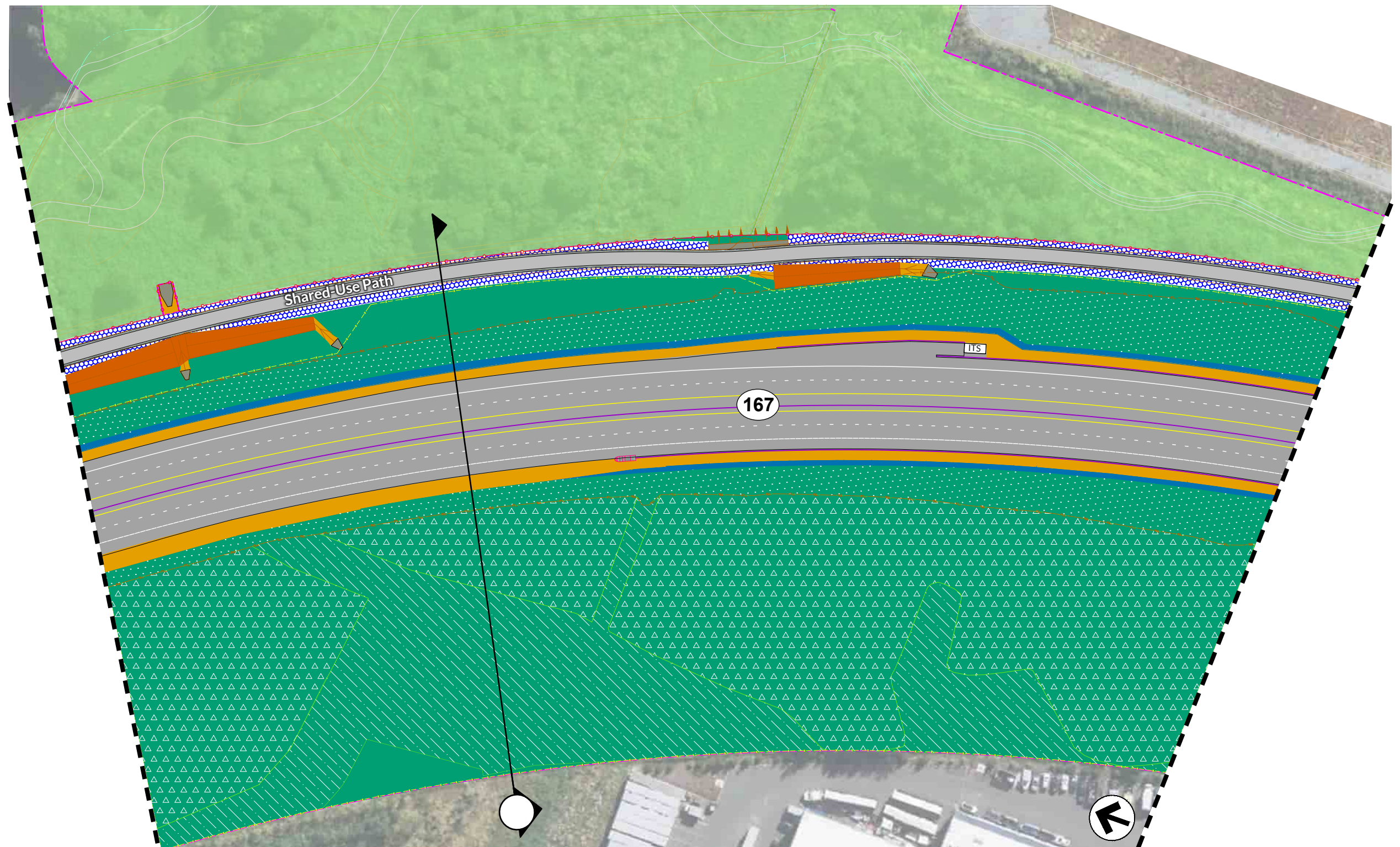
Conceptual
Landscape Plan

KEY MAP



LEGEND

- LAWN
- STREET TREES AND LAWN
- EROSION CONTROL GRASSES
- SHRUBS
- DETERRENT SHRUBS
- POLLINATORS
- TREES & POLLINATORS $\geq 3:1$
- TREES & SHRUBS $\geq 2:1$ TO $< 3:1$
- STREETScape PLANTS
- STREETScape DETERRENT SHRUBS
- STORMWATER TREATMENT
- FORESTED WETLAND
- SCRUB SHRUB WETLAND
- RIPARIAN FOREST
- RIPARIAN RESTORATION
- RIPARIAN SHRUBS
- PRESERVATION AREA
- WETLAND PRESERVATION
- ETHNOBOTANICAL PLANTING OR OTHER
(See PAUDP)
- NO PLANTING
- GRAVEL
- ASHLAR STAMPED CONCRETE
- TRAIL SPECIALTY PAVING (SEE PAUDP)
- ITS CABINET
- DRAINAGE OUTFALL



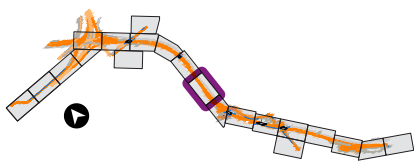
Scale: 1" = 100'

See Conceptual Landscape Plans Key Map for MAP LEGEND.

Plan Map 10

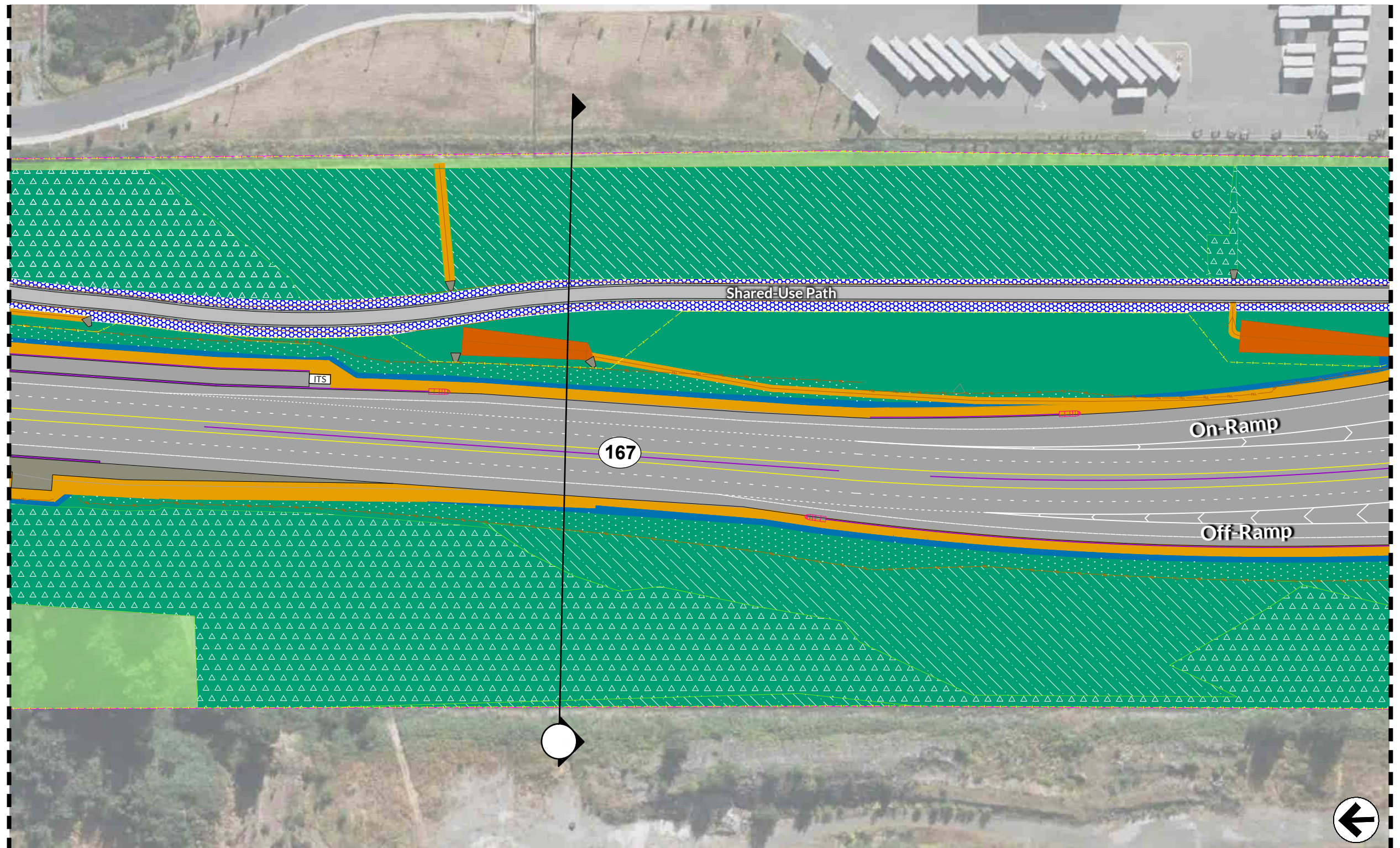
Conceptual Landscape Plan

KEY MAP



LEGEND

- LAWN
- STREET TREES AND LAWN
- EROSION CONTROL GRASSES
- SHRUBS
- DETERRENT SHRUBS
- POLLINATORS
- TREES & POLLINATORS ≥3:1
- TREES & SHRUBS ≥2:1 TO <3:1
- STREETScape PLANTS
- STREETScape DETERRENT SHRUBS
- STORMWATER TREATMENT
- FORESTED WETLAND
- SCRUB SHRUB WETLAND
- RIPARIAN FOREST
- RIPARIAN RESTORATION
- RIPARIAN SHRUBS
- PRESERVATION AREA
- WETLAND PRESERVATION
- ETHNOBOTANICAL PLANTING OR OTHER (See PAUDP)
- NO PLANTING
- GRAVEL
- ASHLAR STAMPED CONCRETE
- TRAIL SPECIALTY PAVING (SEE PAUDP)
- ITS CABINET
- DRAINAGE OUTFALL



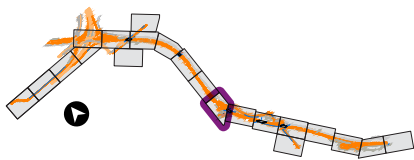
See Conceptual Landscape Plans Key Map for MAP LEGEND.

Scale: 1" = 100'

Plan Map 11

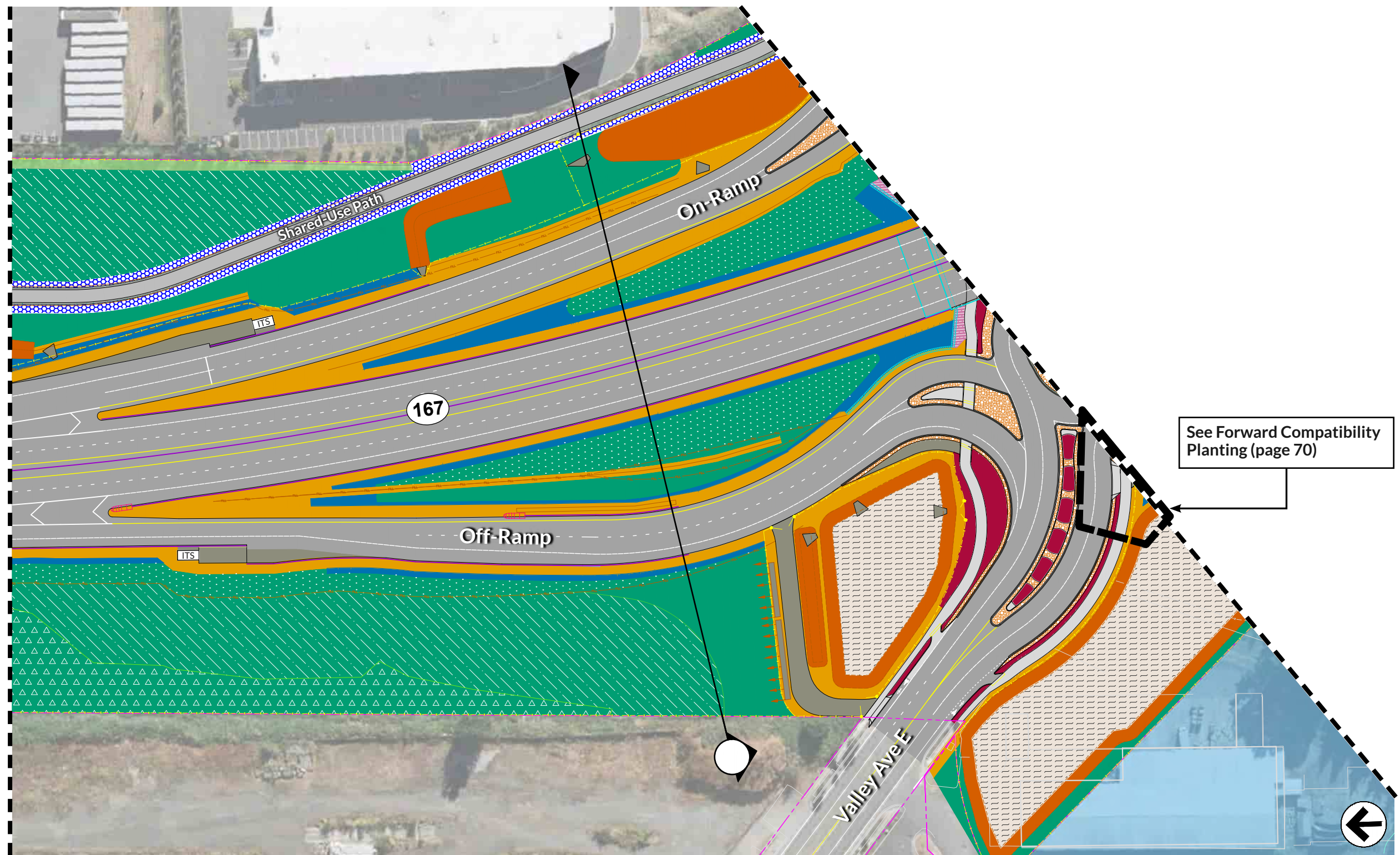
Conceptual Landscape Plan

KEY MAP



LEGEND

- LAWN
- STREET TREES AND LAWN
- EROSION CONTROL GRASSES
- SHRUBS
- DETERRENT SHRUBS
- POLLINATORS
- TREES & POLLINATORS ≥3:1
- TREES & SHRUBS ≥2:1 TO <3:1
- STREETScape PLANTS
- STREETScape DETERRENT SHRUBS
- STORMWATER TREATMENT
- FORESTED WETLAND
- SCRUB SHRUB WETLAND
- RIPARIAN FOREST
- RIPARIAN RESTORATION
- RIPARIAN SHRUBS
- PRESERVATION AREA
- WETLAND PRESERVATION
- ETHNOBOTANICAL PLANTING OR OTHER (See PAUDP)
- NO PLANTING
- GRAVEL
- ASHLAR STAMPED CONCRETE
- TRAIL SPECIALTY PAVING (SEE PAUDP)
- ITS CABINET
- DRAINAGE OUTFALL



See Forward Compatibility
Planting (page 70)

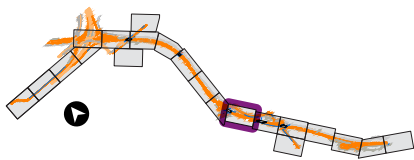
Scale: 1" = 100'

See Conceptual Landscape Plans Key Map for MAP LEGEND.

Plan Map 12

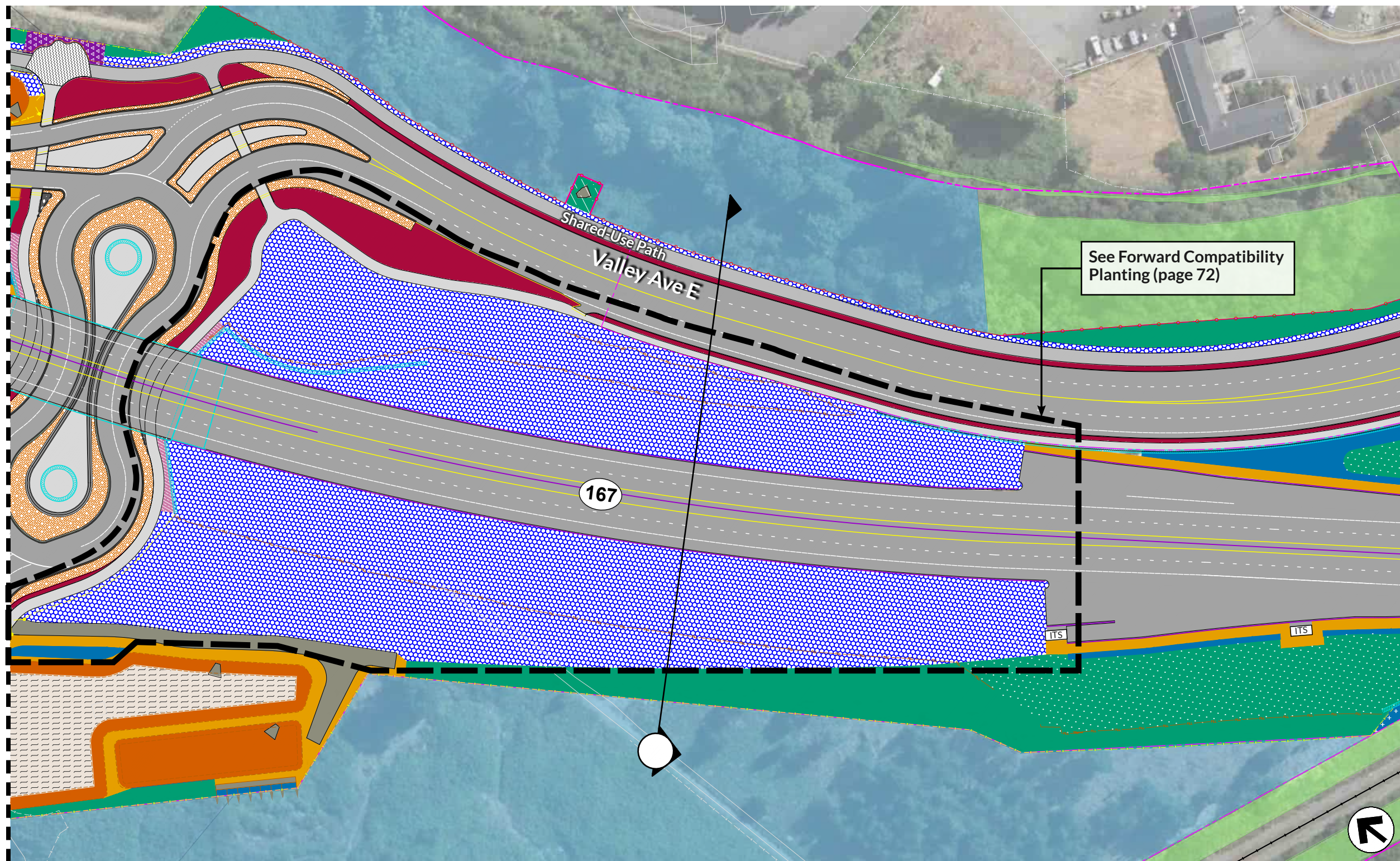
Conceptual Landscape Plan

KEY MAP



LEGEND

- LAWN
- STREET TREES AND LAWN
- EROSION CONTROL GRASSES
- SHRUBS
- DETERRENT SHRUBS
- POLLINATORS
- TREES & POLLINATORS $\geq 3:1$
- TREES & SHRUBS $\geq 2:1$ TO $< 3:1$
- STREETScape PLANTS
- STREETScape DETERRENT SHRUBS
- STORMWATER TREATMENT
- FORESTED WETLAND
- SCRUB SHRUB WETLAND
- RIPARIAN FOREST
- RIPARIAN RESTORATION
- RIPARIAN SHRUBS
- PRESERVATION AREA
- WETLAND PRESERVATION
- ETHNOBOTANICAL PLANTING OR OTHER (See PAUDP)
- NO PLANTING
- GRAVEL
- ASHLAR STAMPED CONCRETE
- TRAIL SPECIALTY PAVING (SEE PAUDP)
- ITS CABINET
- DRAINAGE OUTFALL



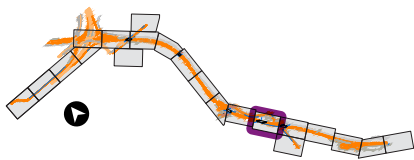
See Conceptual Landscape Plans Key Map for MAP LEGEND.

Scale: 1" = 100'

Plan Map 13

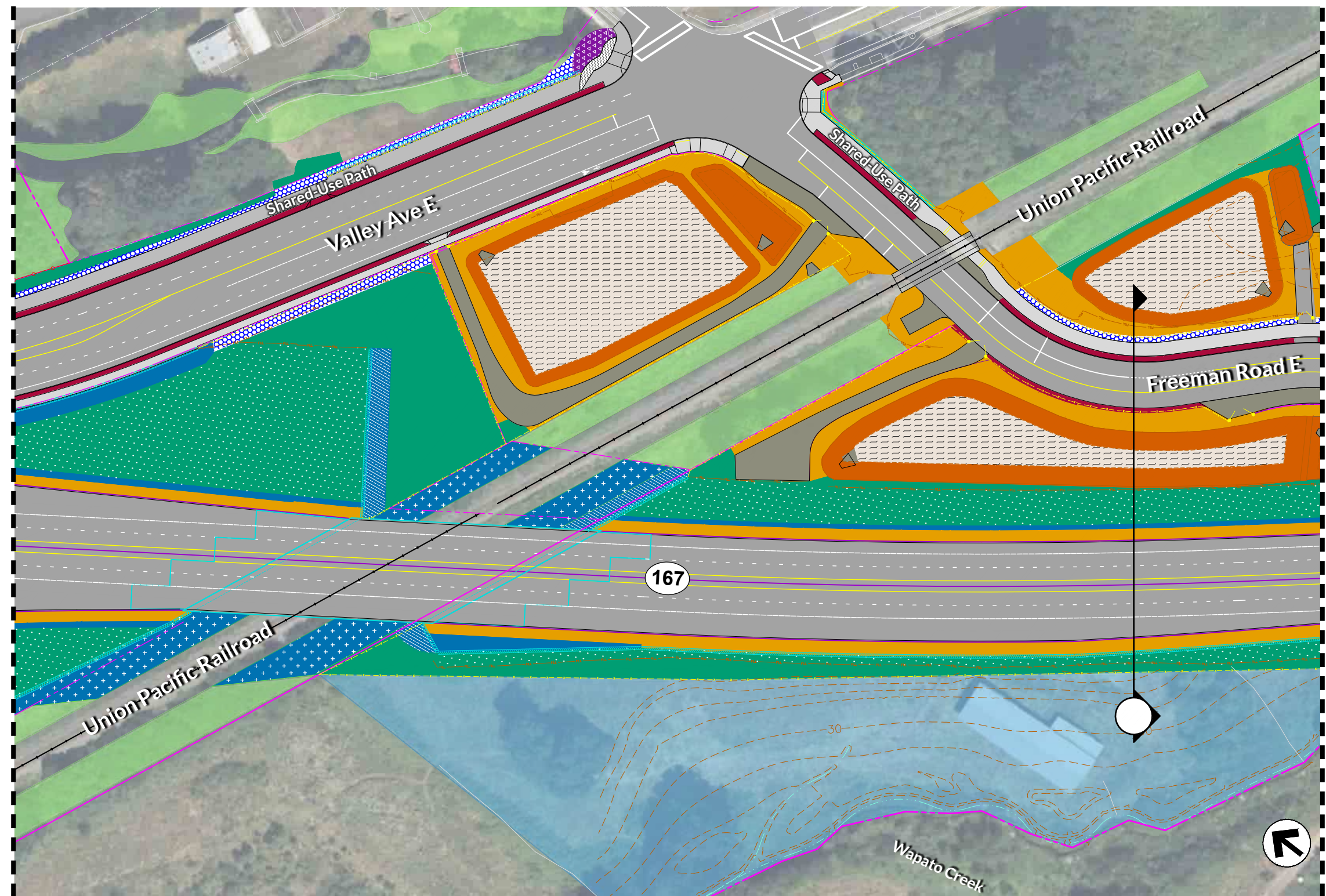
Conceptual Landscape Plan

KEY MAP



LEGEND

- LAWN
- STREET TREES AND LAWN
- EROSION CONTROL GRASSES
- SHRUBS
- DETERRENT SHRUBS
- POLLINATORS
- TREES & POLLINATORS $\geq 3:1$
- TREES & SHRUBS $\geq 2:1$ TO $< 3:1$
- STREETScape PLANTS
- STREETScape DETERRENT SHRUBS
- STORMWATER TREATMENT
- FORESTED WETLAND
- SCRUB SHRUB WETLAND
- RIPARIAN FOREST
- RIPARIAN RESTORATION
- RIPARIAN SHRUBS
- PRESERVATION AREA
- WETLAND PRESERVATION
- ETHNOBOTANICAL PLANTING OR OTHER
(See PAUDP)
- NO PLANTING
- GRAVEL
- ASHLAR STAMPED CONCRETE
- TRAIL SPECIALTY PAVING (SEE PAUDP)
- ITS CABINET
- DRAINAGE OUTFALL



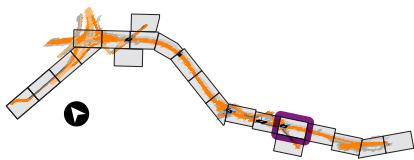
Scale: 1" = 100'

See Conceptual Landscape Plans Key Map for MAP LEGEND.

Plan Map 14a

Conceptual Landscape Plan

KEY MAP



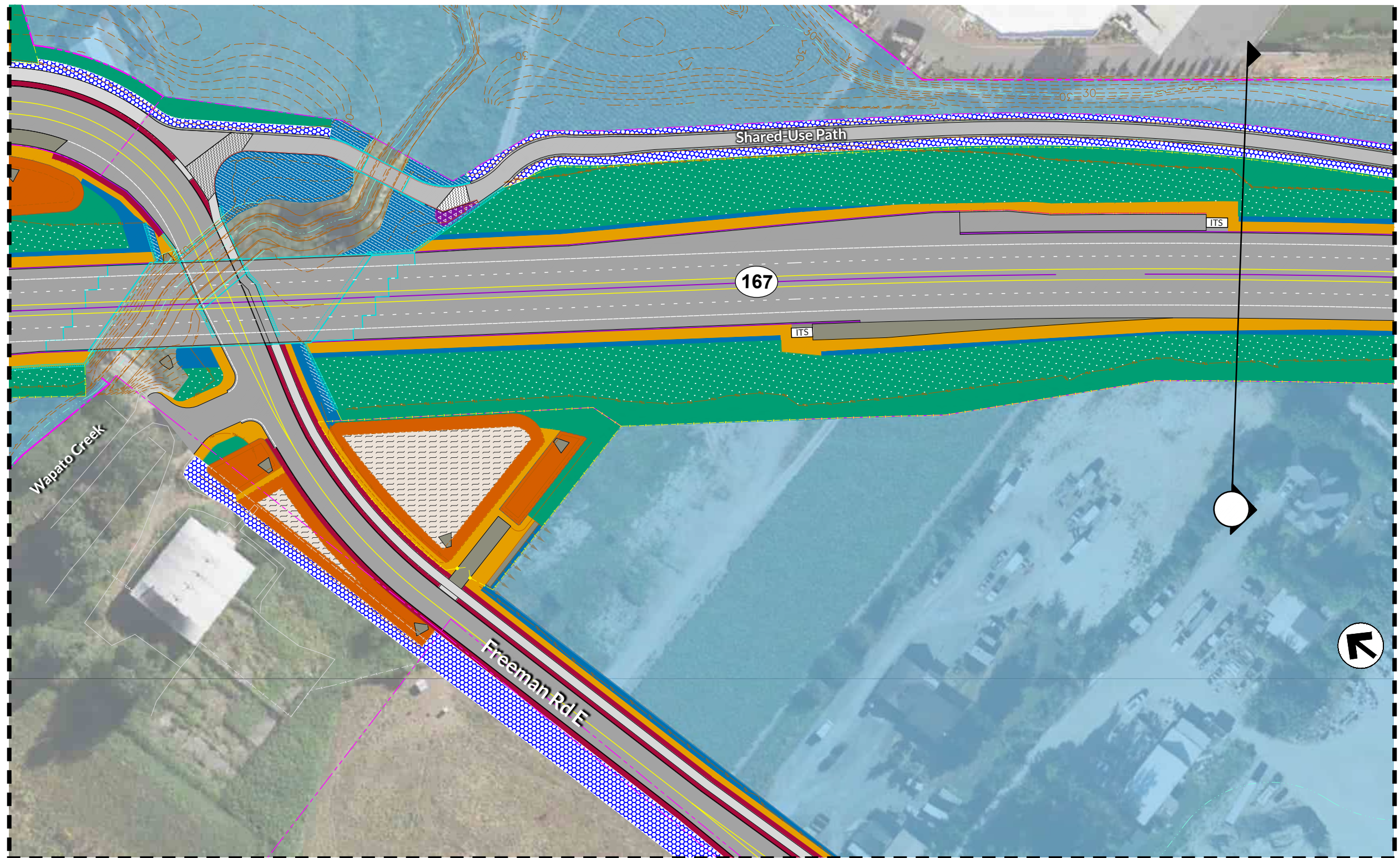
LEGEND

- LAWN
- STREET TREES AND LAWN
- EROSION CONTROL GRASSES
- SHRUBS
- DETERRENT SHRUBS
- POLLINATORS
- TREES & POLLINATORS $\geq 3:1$
- TREES & SHRUBS $\geq 2:1$ TO $< 3:1$
- STREETSCAPE PLANTS
- STREETSCAPE DETERRENT SHRUBS
- STORMWATER TREATMENT
- FORESTED WETLAND
- SCRUB SHRUB WETLAND
- RIPARIAN FOREST
- RIPARIAN RESTORATION
- RIPARIAN SHRUBS
- PRESERVATION AREA
- WETLAND PRESERVATION
- ETHNOBOTANICAL PLANTING OR OTHER
(See PAUDP)

- NO PLANTING
- GRAVEL
- ASHLAR STAMPED CONCRETE
- TRAIL SPECIALTY PAVING (SEE PAUDP)

ITS ITS CABINET

▽ DRAINAGE OUTFALL



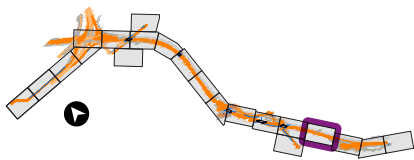
See Conceptual Landscape Plans Key Map for MAP LEGEND.

Scale: 1" = 100'

Plan Map 15

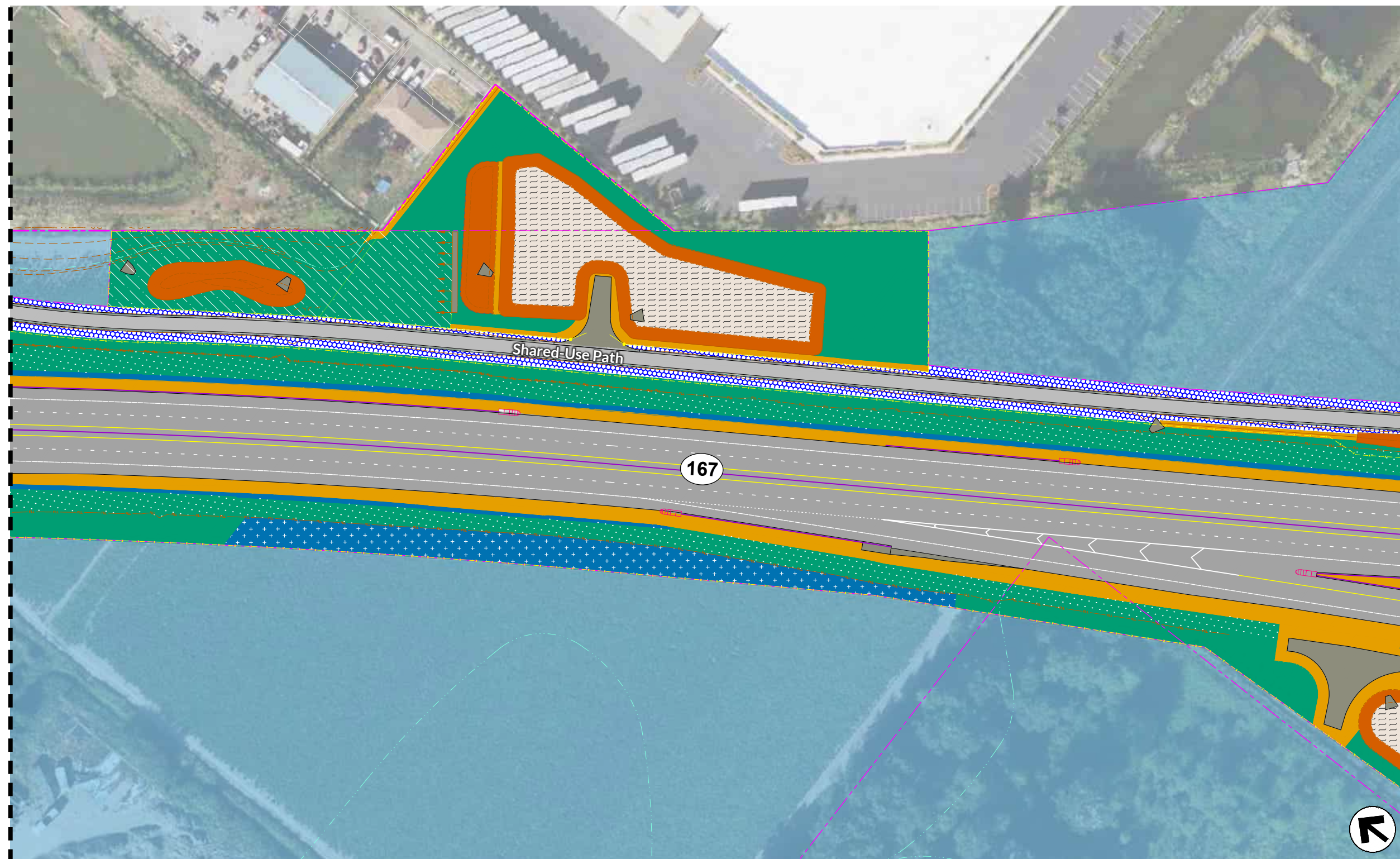
Conceptual Landscape Plan

KEY MAP



LEGEND

- LAWN
- STREET TREES AND LAWN
- EROSION CONTROL GRASSES
- SHRUBS
- DETERRENT SHRUBS
- POLLINATORS
- TREES & POLLINATORS $\geq 3:1$
- TREES & SHRUBS $\geq 2:1$ TO $< 3:1$
- STREETSCAPE PLANTS
- STREETSCAPE DETERRENT SHRUBS
- STORMWATER TREATMENT
- FORESTED WETLAND
- SCRUB SHRUB WETLAND
- RIPARIAN FOREST
- RIPARIAN RESTORATION
- RIPARIAN SHRUBS
- PRESERVATION AREA
- WETLAND PRESERVATION
- ETHNOBOTANICAL PLANTING OR OTHER
(See PAUDP)
- NO PLANTING
- GRAVEL
- ASHLAR STAMPED CONCRETE
- TRAIL SPECIALTY PAVING (SEE PAUDP)
- ITS CABINET
- DRAINAGE OUTFALL



Note: Do not plant the bottom of storm pond.

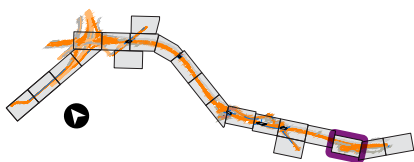
See Conceptual Landscape Plans Key Map for MAP LEGEND.

Scale: 1" = 100'

Plan Map 16

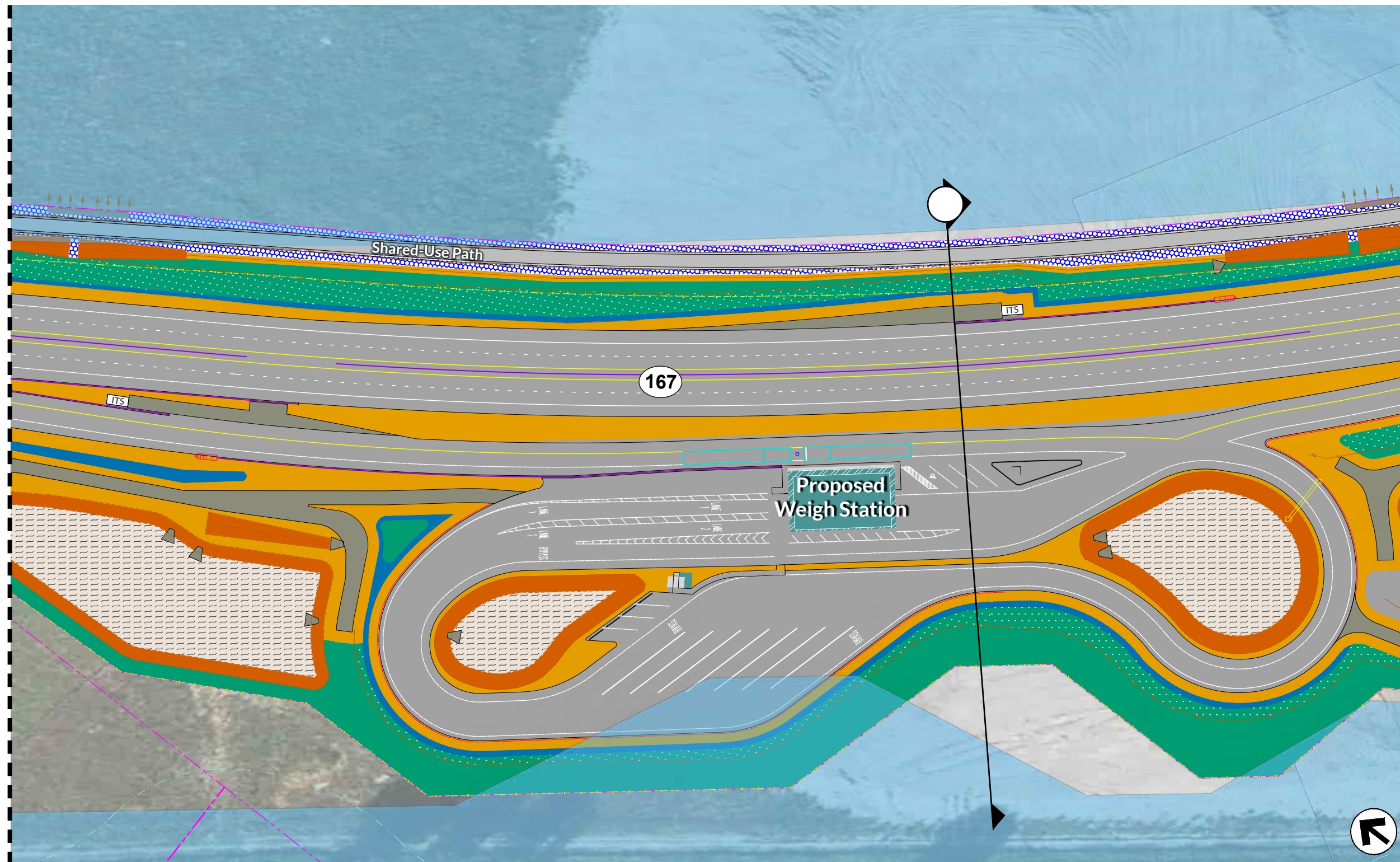
Conceptual Landscape Plan

KEY MAP



LEGEND

- LAWN
- STREET TREES AND LAWN
- EROSION CONTROL GRASSES
- SHRUBS
- DETERRENT SHRUBS
- POLLINATORS
- TREES & POLLINATORS $\geq 3:1$
- TREES & SHRUBS $\geq 2:1$ TO $< 3:1$
- STREETSCAPE PLANTS
- STREETSCAPE DETERRENT SHRUBS
- STORMWATER TREATMENT
- FORESTED WETLAND
- SCRUB SHRUB WETLAND
- RIPARIAN FOREST
- RIPARIAN RESTORATION
- RIPARIAN SHRUBS
- PRESERVATION AREA
- WETLAND PRESERVATION
- ETHNOBOTANICAL PLANTING OR OTHER
(See PAUDP)
- NO PLANTING
- GRAVEL
- ASHLAR STAMPED CONCRETE
- TRAIL SPECIALTY PAVING (SEE PAUDP)
- ITS ITS CABINET
- DRAINAGE OUTFALL



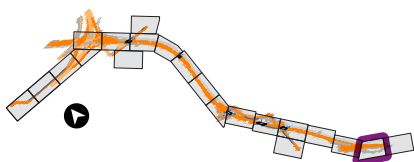
See Conceptual Landscape Plans Key Map for MAP LEGEND.

Scale: 1" = 100'

Plan Map 17

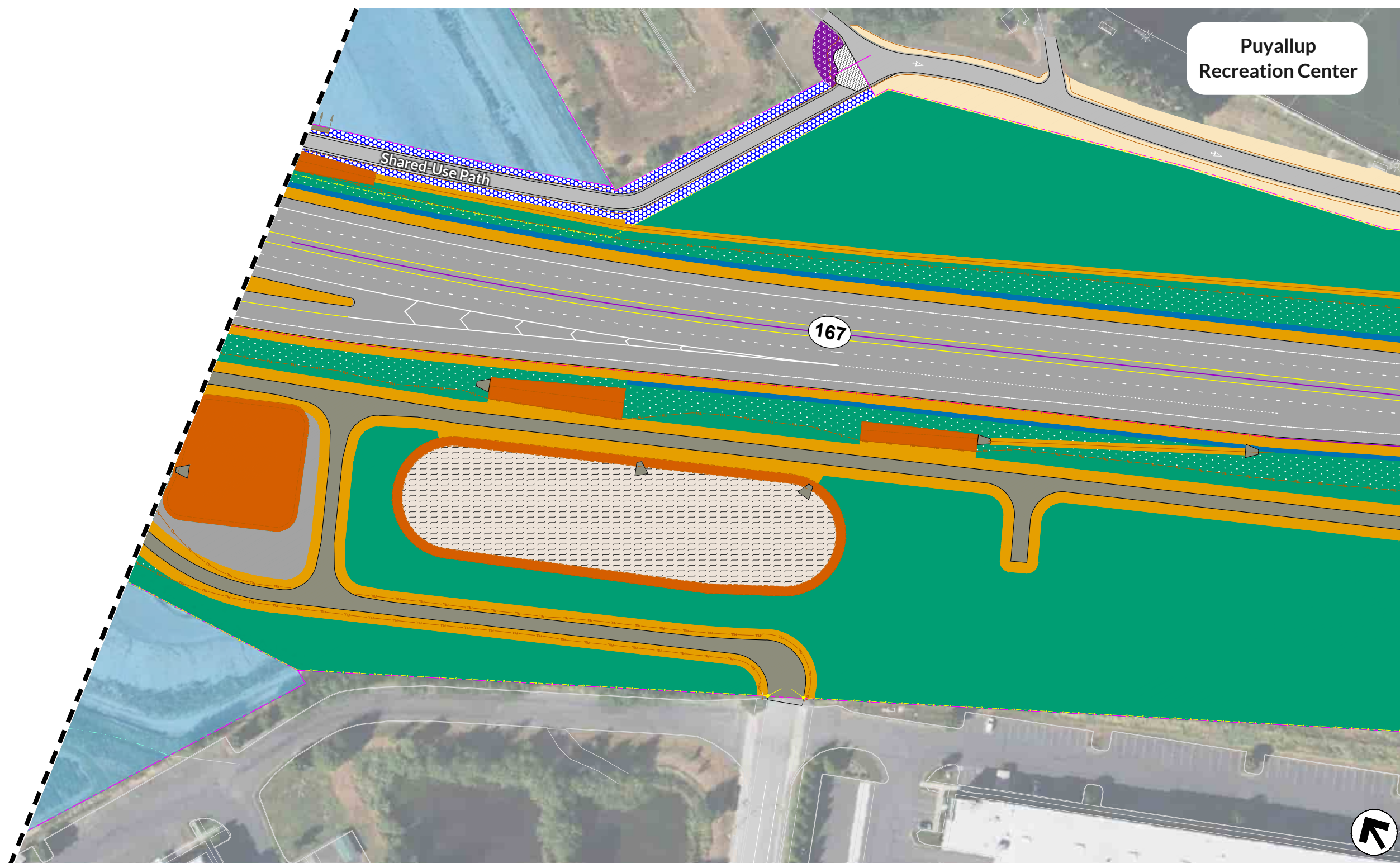
Conceptual Landscape Plan

KEY MAP



LEGEND

- LAWN
- STREET TREES AND LAWN
- EROSION CONTROL GRASSES
- SHRUBS
- DETERRENT SHRUBS
- POLLINATORS
- TREES & POLLINATORS $\geq 3:1$
- TREES & SHRUBS $\geq 2:1$ TO $< 3:1$
- STREETScape PLANTS
- STREETScape DETERRENT SHRUBS
- STORMWATER TREATMENT
- FORESTED WETLAND
- SCRUB SHRUB WETLAND
- RIPARIAN FOREST
- RIPARIAN RESTORATION
- RIPARIAN SHRUBS
- PRESERVATION AREA
- WETLAND PRESERVATION
- ETHNOBOTANICAL PLANTING OR OTHER (See PAUDP)
- NO PLANTING
- GRAVEL
- ASHLAR STAMPED CONCRETE
- TRAIL SPECIALTY PAVING (SEE PAUDP)
- ITS CABINET
- DRAINAGE OUTFALL



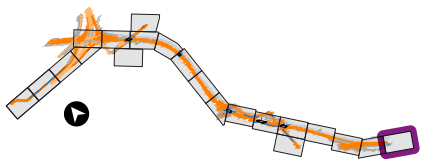
Scale: 1" = 100'

See Conceptual Landscape Plans Key Map for MAP LEGEND.

Plan Map 18

Conceptual Landscape Plan

KEY MAP



LEGEND

- LAWN
- STREET TREES AND LAWN
- EROSION CONTROL GRASSES
- SHRUBS
- DETERRENT SHRUBS
- POLLINATORS
- TREES & POLLINATORS $\geq 3:1$
- TREES & SHRUBS $\geq 2:1$ TO $< 3:1$
- STREETSCAPE PLANTS
- STREETSCAPE DETERRENT SHRUBS
- STORMWATER TREATMENT
- FORESTED WETLAND
- SCRUB SHRUB WETLAND
- RIPARIAN FOREST
- RIPARIAN RESTORATION
- RIPARIAN SHRUBS
- PRESERVATION AREA
- WETLAND PRESERVATION
- ETHNOBOTANICAL PLANTING OR OTHER
(See PAUDP)
- NO PLANTING
- GRAVEL
- ASHLAR STAMPED CONCRETE
- TRAIL SPECIALTY PAVING (SEE PAUDP)
- ITS CABINET
- DRAINAGE OUTFALL



Scale: 1" = 100'

See Conceptual Landscape Plans Key Map for MAP LEGEND.

Conceptual Landscape Plans Key Map

Conceptual Landscape Plan Maps for the SR 167/SR 161 to SR 410 – Rebuild Interchange Project are numbered sequentially from west to east along the freeway alignment. Refer to numbers for supporting adjacent maps. Refer to map legend at the bottom for description of typical surface features for all maps.

The Conceptual Landscape Plan Maps have been updated to reflect design changes from those shown in the Puget Sound Gateway Program, SR 167 Completion Project Roadside Restoration Master Plan.

MAP LEGEND

	ITS CABINET
	RIGHT-OF-WAY
	CHAIN LINK FENCE
	GATE
	RETAINING WALL
	BRIDGE
	GUARDRAIL
	BARRIER
	CUT/FILL SLOPES
	PROPOSED GRADES

PLANT LEGEND

	TEMP. EROSION CONTROL GRASSES
	EROSION CONTROL GRASSES
	SHRUBS
	DETERRENT SHRUBS
	POLLINATORS
	TREES & POLLINATORS ≥3:1
	TREES & SHRUBS ≥2:1 TO <3:1
	STREETSCAPE PLANTS
	STREETSCAPE DETERRENT SHRUBS
	STORMWATER TREATMENT
	RIPARIAN FOREST
	RIPARIAN SHRUBS
	PRESERVATION AREA
	WETLAND PRESERVATION
	ETHNOBOTANICAL PLANTING OR OTHER (See PAUDP)
	SHADE MIX
	ASHLAR STAMPED CONCRETE
	TRAIL SPECIALTY PAVING (SEE PAUDP)
	ITS CABINET



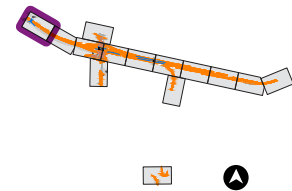
Select individual map number to hyperlink to the Conceptual Landscape Plan Map page.
Click on "PLANS KEY MAP" button at the bottom to return to Plans Key Map.

Plan Map

1

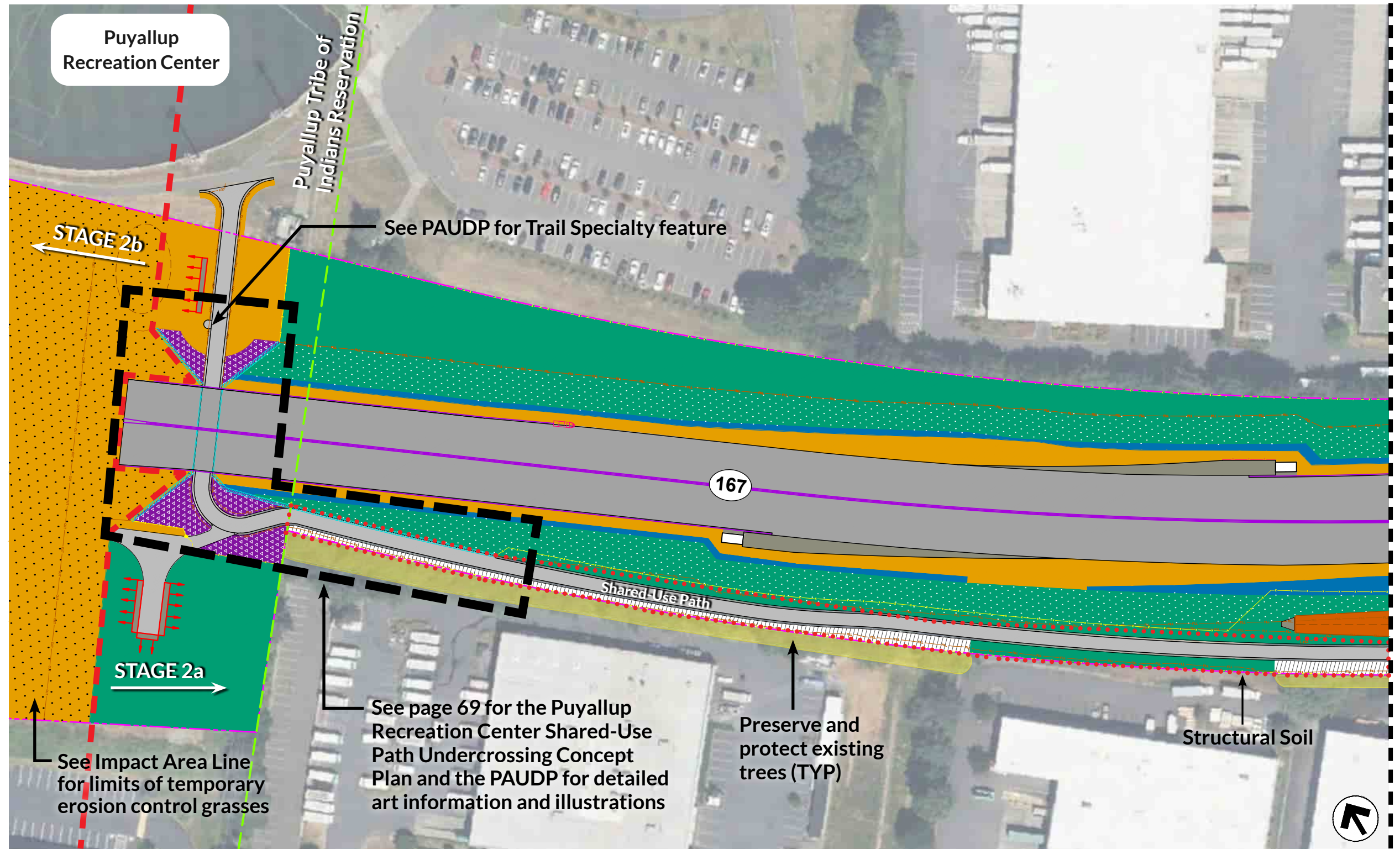
Conceptual
Landscape Plan

KEY MAP



PLANT LEGEND

- TEMP. EROSION CONTROL GRASSES
- EROSION CONTROL GRASSES
- SHRUBS
- DETERRENT SHRUBS
- POLLINATORS
- TREES & POLLINATORS ≥3:1
- TREES & SHRUBS ≥2:1 TO <3:1
- STREETScape PLANTS
- STREETScape DETERRENT SHRUBS
- STORMWATER TREATMENT
- RIPARIAN FOREST
- RIPARIAN SHRUBS
- PRESERVATION AREA
- WETLAND PRESERVATION
- ETHNOBOTANICAL PLANTING OR OTHER (See PAUDP)
- SHADE MIX
- ASHLAR STAMPED CONCRETE
- TRAIL SPECIALTY PAVING (SEE PAUDP)
- ITS CABINET

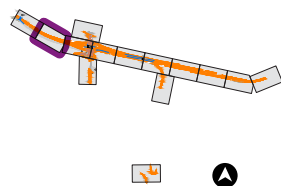


Scale: 1" = 100'

Plan Map 2

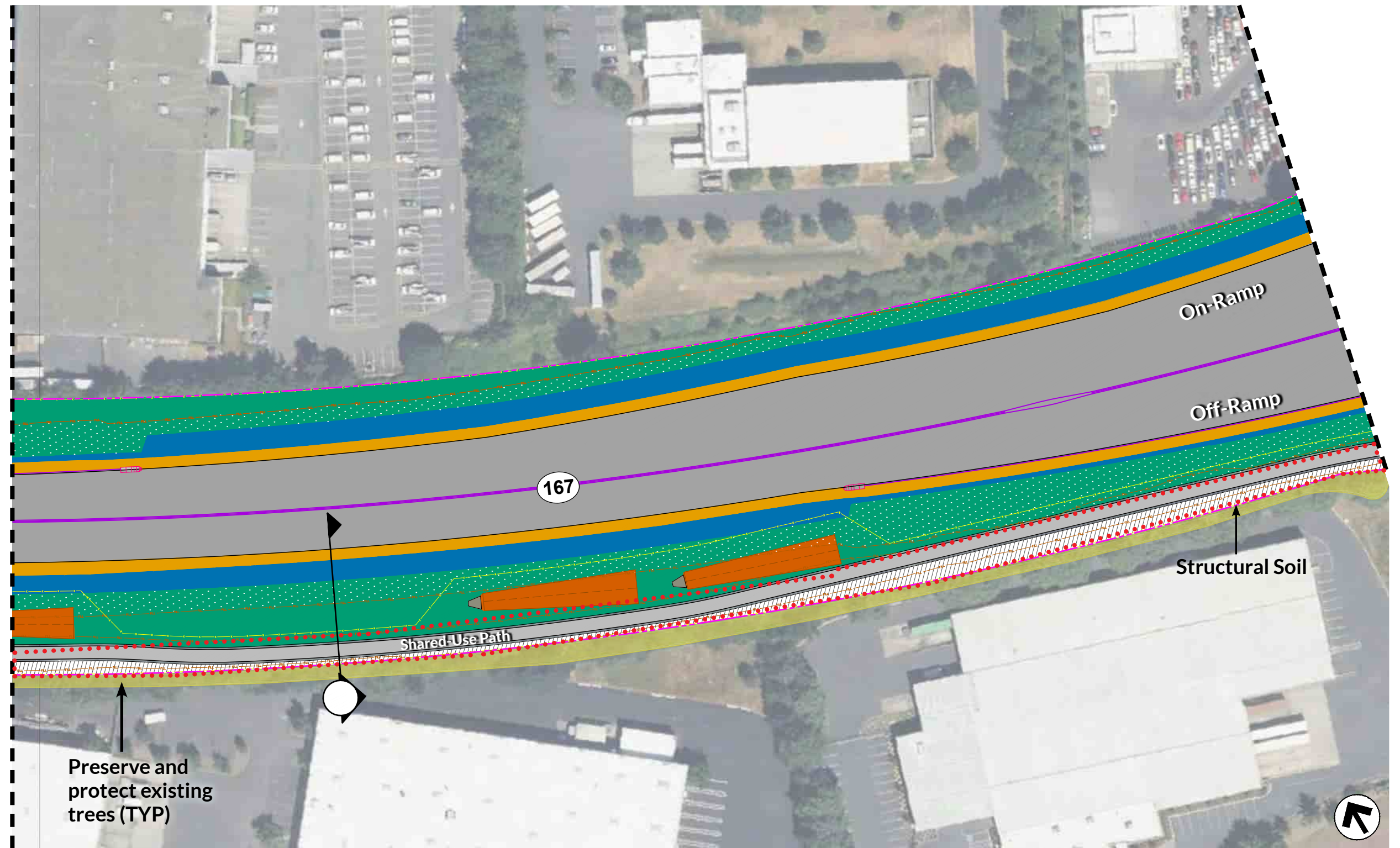
Conceptual Landscape Plan

KEY MAP



PLANT LEGEND

- TEMP. EROSION CONTROL GRASSES
- EROSION CONTROL GRASSES
- SHRUBS
- DETERRENT SHRUBS
- POLLINATORS
- TREES & POLLINATORS $\geq 3:1$
- TREES & SHRUBS $\geq 2:1$ TO $< 3:1$
- STREETSCAPE PLANTS
- STREETSCAPE DETERRENT SHRUBS
- STORMWATER TREATMENT
- RIPARIAN FOREST
- RIPARIAN SHRUBS
- PRESERVATION AREA
- WETLAND PRESERVATION
- ETHNOBOTANICAL PLANTING OR OTHER (See PAUDP)
- SHADE MIX
- ASHLAR STAMPED CONCRETE
- TRAIL SPECIALTY PAVING (SEE PAUDP)
- ITS CABINET

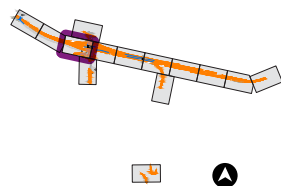


Scale: 1" = 100'

Plan Map 3a

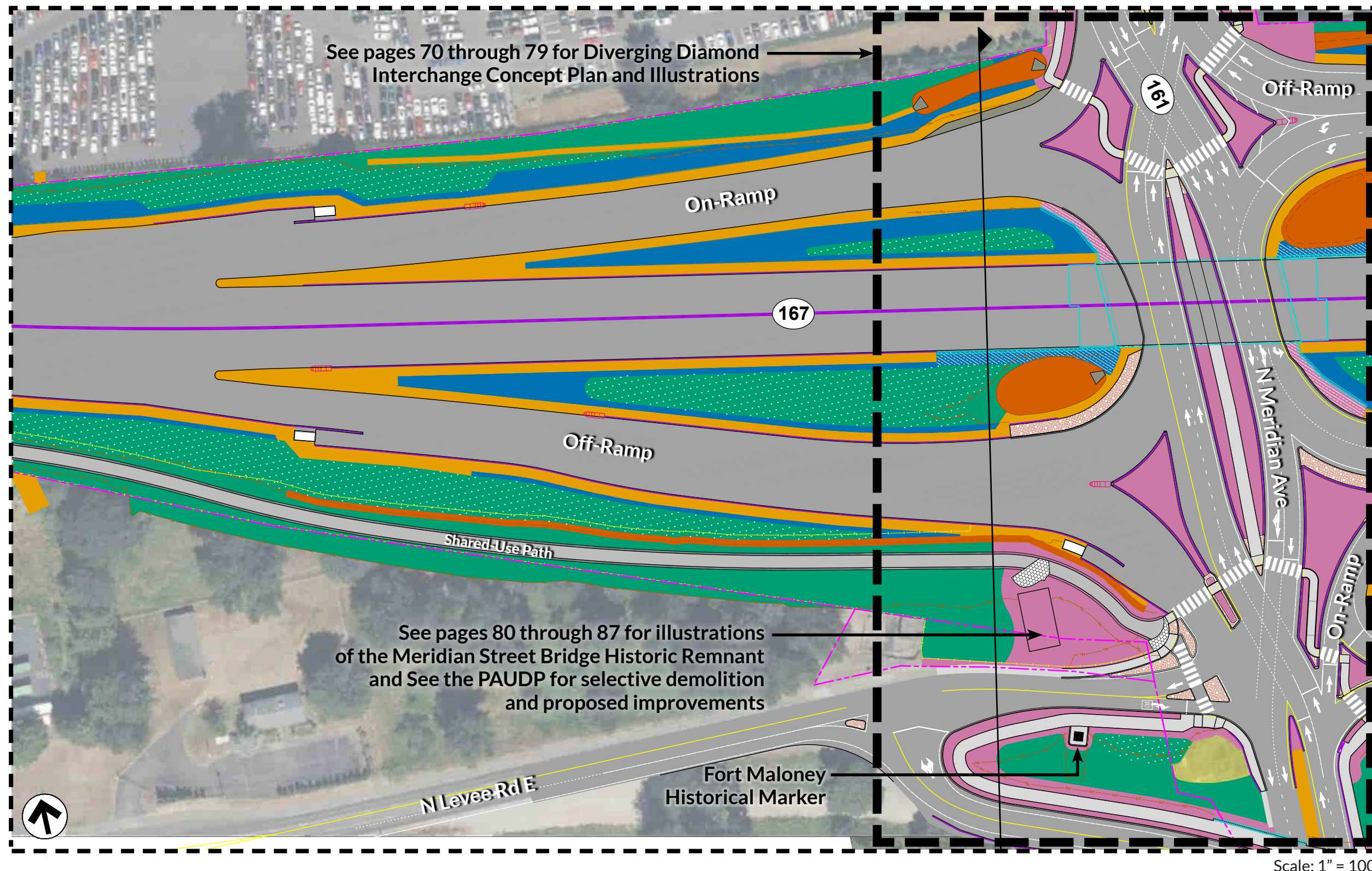
Conceptual Landscape Plan

KEY MAP



PLANT LEGEND

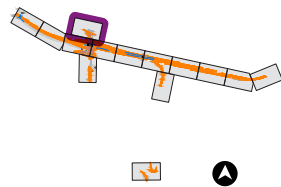
- TEMP. EROSION CONTROL GRASSES
- EROSION CONTROL GRASSES
- SHRUBS
- DETERRENT SHRUBS
- POLLINATORS
- TREES & POLLINATORS ≥3:1
- TREES & SHRUBS ≥2:1 TO <3:1
- STREETSCAPE PLANTS
- STREETSCAPE DETERRENT SHRUBS
- STORMWATER TREATMENT
- RIPARIAN FOREST
- RIPARIAN SHRUBS
- PRESERVATION AREA
- WETLAND PRESERVATION
- ETHNOBOTANICAL PLANTING OR OTHER (See PAUDP)
- ASHLAR STAMPED CONCRETE
- TRAIL SPECIALTY PAVING (SEE PAUDP)
- ITS CABINET



Plan Map 3b

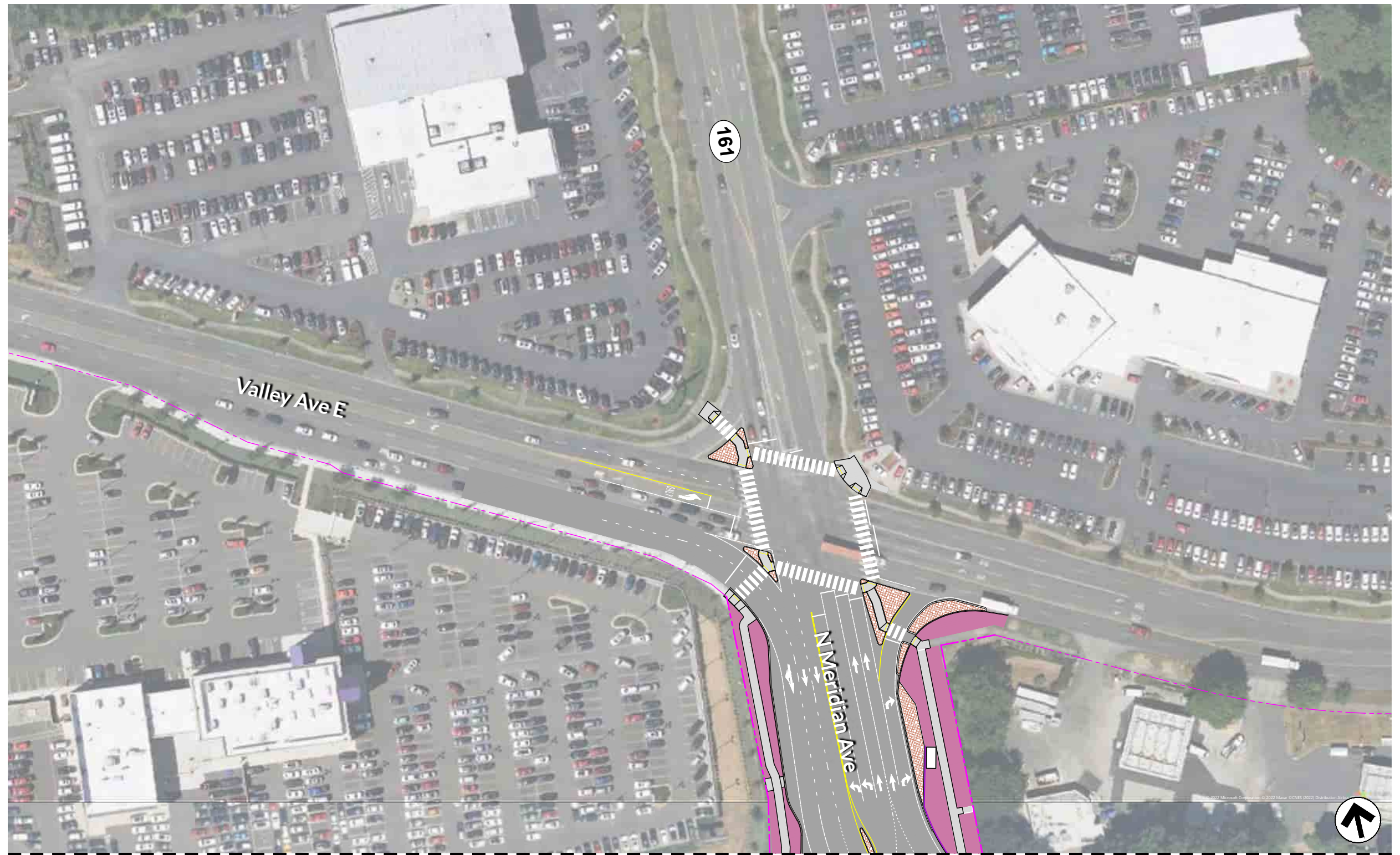
Conceptual Landscape Plan

KEY MAP



PLANT LEGEND

- TEMP. EROSION CONTROL GRASSES
- EROSION CONTROL GRASSES
- SHRUBS
- DETERRENT SHRUBS
- POLLINATORS
- TREES & POLLINATORS ≥3:1
- TREES & SHRUBS ≥2:1 TO <3:1
- STREETScape PLANTS
- STREETScape DETERRENT SHRUBS
- STORMWATER TREATMENT
- RIPARIAN FOREST
- RIPARIAN SHRUBS
- PRESERVATION AREA
- WETLAND PRESERVATION
- ETHNOBOTANICAL PLANTING OR OTHER (See PAUDP)
- ASHLAR STAMPED CONCRETE
- TRAIL SPECIALTY PAVING (SEE PAUDP)
- ITS CABINET

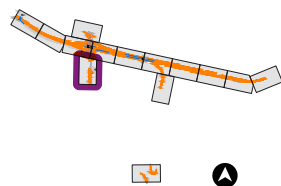


Scale: 1" = 100'

Plan Map 3c

Conceptual Landscape Plan

KEY MAP



PLANT LEGEND

- TEMP. EROSION CONTROL GRASSES
- EROSION CONTROL GRASSES
- SHRUBS
- DETERRENT SHRUBS
- POLLINATORS
- TREES & POLLINATORS $\geq 3:1$
- TREES & SHRUBS $\geq 2:1$ TO $< 3:1$
- STREETSCAPE PLANTS
- STREETSCAPE DETERRENT SHRUBS
- STORMWATER TREATMENT
- RIPARIAN FOREST
- RIPARIAN SHRUBS
- PRESERVATION AREA
- WETLAND PRESERVATION
- ETHNOBOTANICAL PLANTING OR OTHER (See PAUDP)
- SHADE MIX
- ASHLAR STAMPED CONCRETE
- TRAIL SPECIALTY PAVING (SEE PAUDP)
- ITS CABINET



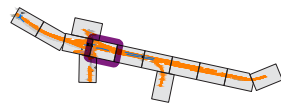
Scale: 1" = 100'

Plan Map

4

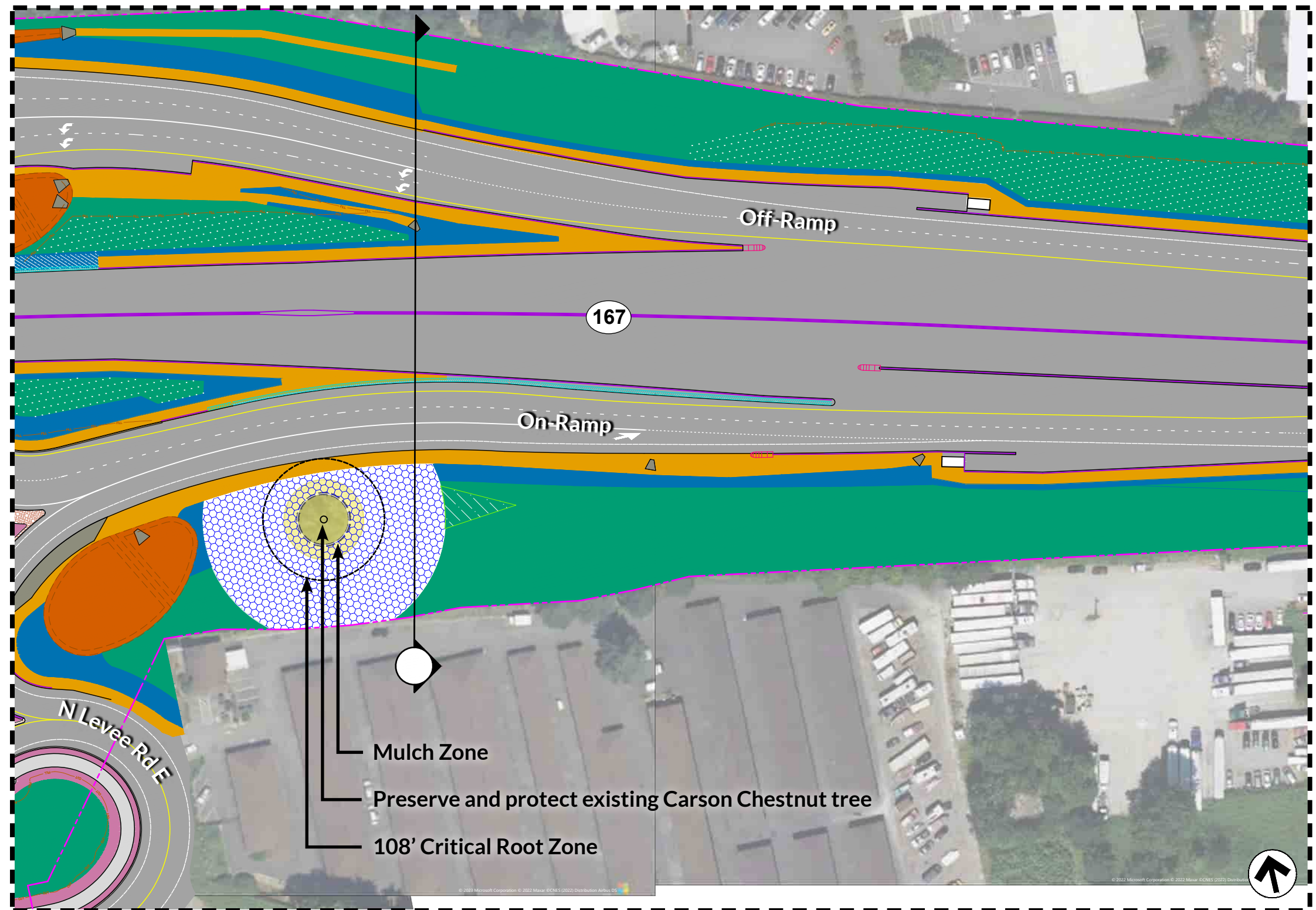
Conceptual
Landscape Plan

KEY MAP



PLANT LEGEND

- TEMP. EROSION CONTROL GRASSES
- EROSION CONTROL GRASSES
- SHRUBS
- DETERRENT SHRUBS
- POLLINATORS
- TREES & POLLINATORS $\geq 3:1$
- TREES & SHRUBS $\geq 2:1$ TO $< 3:1$
- STREETSCAPE PLANTS
- STREETSCAPE DETERRENT SHRUBS
- STORMWATER TREATMENT
- RIPARIAN FOREST
- RIPARIAN SHRUBS
- PRESERVATION AREA
- WETLAND PRESERVATION
- ETHNOBOTANICAL PLANTING OR OTHER (See PAUDP)
- SHADE MIX
- ASHLAR STAMPED CONCRETE
- TRAIL SPECIALTY PAVING (SEE PAUDP)
- ITS CABINET



Scale: 1" = 100'