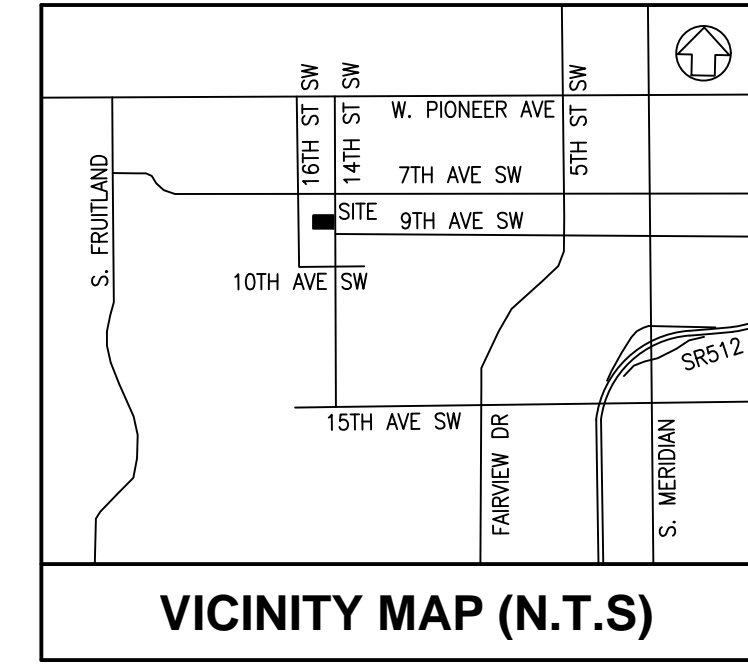
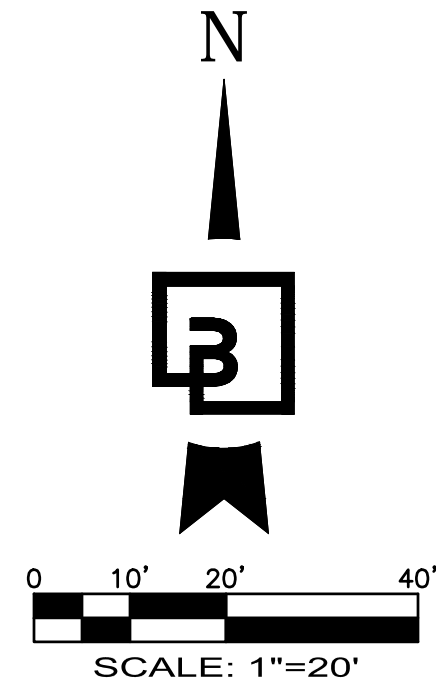
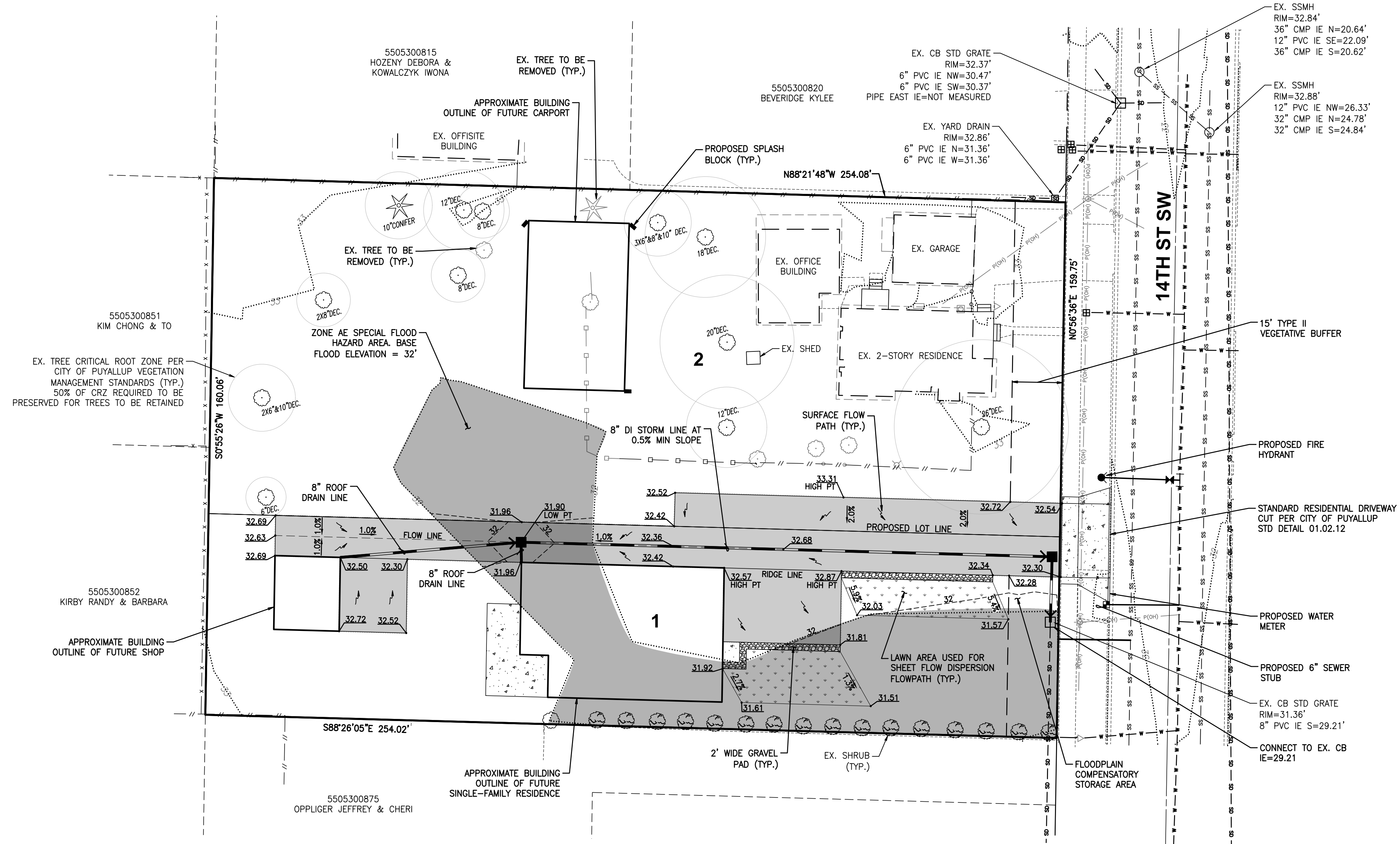


PRELIMINARY GRADING AND UTILITY PLAN
 FOR
MULLAN SHORT PLAT
 A PORTION OF SECTION 28, TOWNSHIP 20 N., RANGE 04 E., W.M.
 CITY OF PUYALLUP, PIERCE COUNTY, WASHINGTON



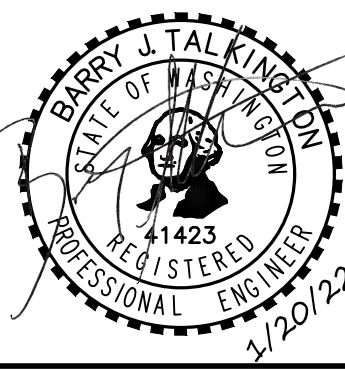
LEGEND:	
EXISTING:	PROPOSED:
	LUMINAIRE (LUM.)
	POWER POLE
	CATCH BASIN (CB)
	STORM MANHOLE (SDMH)
	SANITARY SEWER MANHOLE (SSMH)
	WATER VALVE (WV)
	FIRE HYDRANT (FH)
	WATER METER
	WATER LINE
	SANITARY SEWER LINE
	STORM DRAINAGE LINE
	POWER OVERHEAD
	CHAIN LINK FENCE
	HOGWIRE FENCE
	WOOD FENCE
	TREES
	CONTOUR (MAJOR)
	CONTOUR (MINOR)
	PROJECT BOUNDARY LINE
	RIGHT-OF-WAY
	CENTERLINE
	LOT LINE
	CONCRETE
	GRAVEL
	PAVEMENT



Revision	No.	Date	By	Clk.	Appr.

Title:
PRELIMINARY GRADING AND UTILITY PLAN
 FOR
MULLAN SHORT PLAT

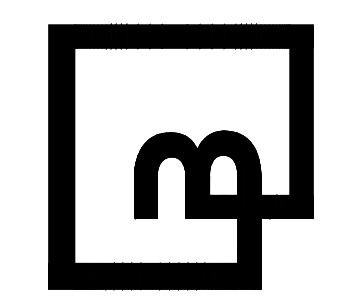
For:
KRIS MULLAN



Scale:
 Horizontal 1"=20'
 Vertical N/A

Designed	WV	WV	BJT	BJT	Date	1/20/22
Drawn						
Checked						
Approved						

Barghausen Consulting Engineers, Inc.
 18215 72nd Avenue South
 Kent, WA 98032
 425.251.6222
barghausen.com



Job Number
22001
 Sheet
2 of **2**