

SCALE:

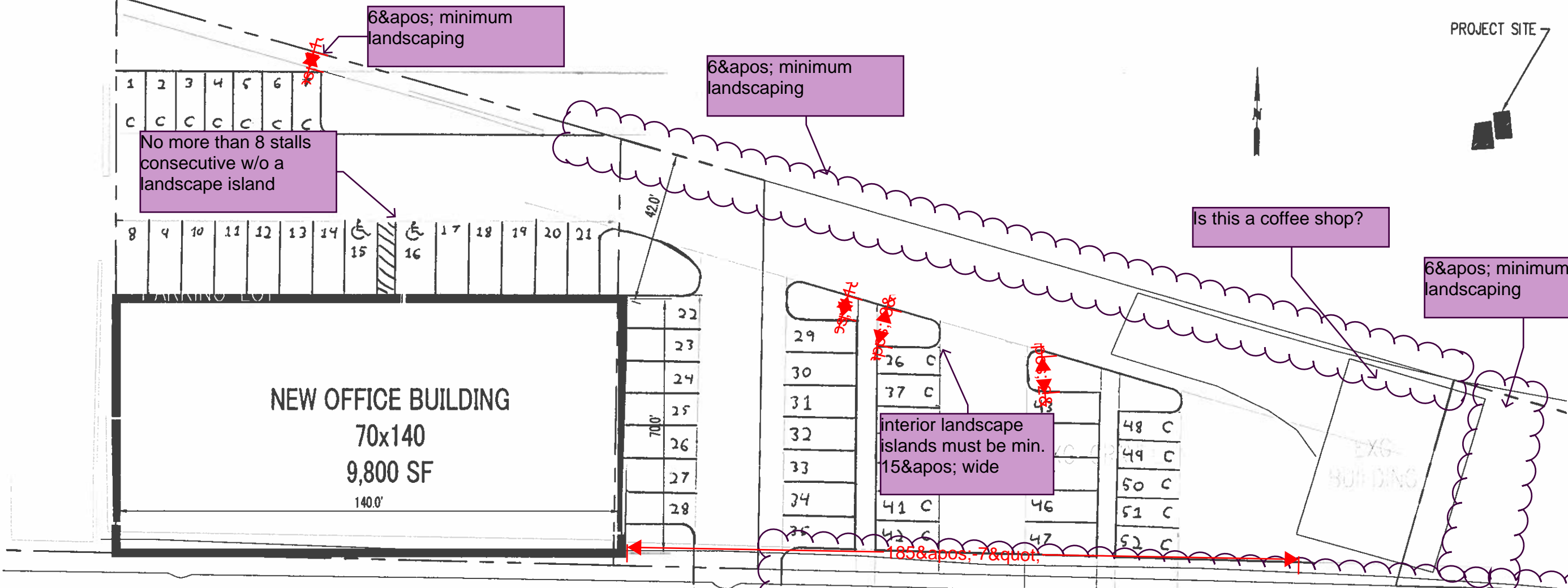
1"=30'

PROJECT SITE

SAGER FAMILY HOMES OFFICE SITE  
 629 E PIONEER AVE  
 PUYALLUP, WA  
 PARCELS: 0420273051, 0420273047 & 0420273157

SAGER FAMILY HOMES, INC.  
 PO BOX 4428  
 TACOMA, WA 98448  
 OFFICE: (253) 537-2313  
 EMAIL: KIRK@SAGERFAMILYHOMES.COM

DATE:  
 03/25/2022  
 DRAWN BY:  
 KL



E PIONEER

See PMC 20.30.036 - parking lot cannot occupy more than 64'±; of street frontage, unless setback 21'±;+

LOT INFO

TOTAL LOT AREA: 0420273051 = 25,726 SF (0.59 AC)  
 0420273047 = 3,958 SF (0.09 AC)  
 0420273157 = 9,895 SF (0.23 AC)

NEW OFFICE AREA: 9,800 SF (FIRST FLOOR)  
 9,800 SF (SECOND FLOOR)  
 19,600 SF (TOTAL)

CONCEPTUAL SITE PLAN

1"=30'

