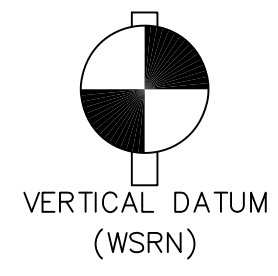
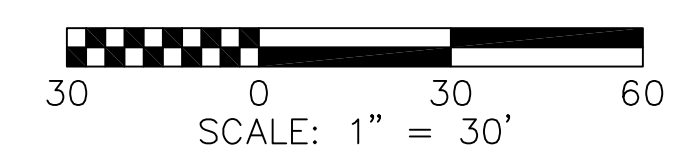
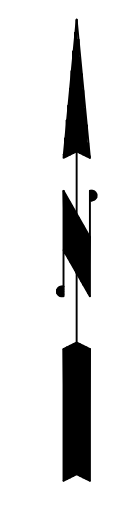


TOPOGRAPHIC SURVEY
OF
2315 INTER AVENUE
PUYALLUP, WA 98372
FOR
RICK VALASQUEZ



NAVD 88 ESTABLISHED USING GPS RTK ROVER
CONSTRAINED TO THE WASHINGTON STATE
REFERENCE NETWORK (WSRN) STATIONS
CONTOUR INTERVAL=1'
TOPOGRAPHY PREPARED BY LARSON & ASSOCIATES

HORIZONTAL DATUM
NAD 83/11 WASHINGTON SOUTH ZONE
ESTABLISHED USING GPS RTK ROVER CONSTRAINED TO THE
WASHINGTON STATE REFERENCE NETWORK (WSRN) STATIONS

"THIS SURVEY WAS PERFORMED BY A
COMBINATION OF CONVENTIONAL FIELD TRAVERSE,
(UTILIZING A TRIMBLE SS OR S6 TOTAL STATION)
AND GPS RTK ROVER METHODOLOGY
THIS SURVEY COMPLIES WITH ALL STANDARDS
AND GUIDELINES OF THE SURVEY RECORDING ACT
CHAPTER 58.09 RCW AND 332-130-070 WAC"

LEGEND

- ⊙ MONUMENT FOUND AS NOTED
- CORNER FOUND AS NOTED
- ✕ SET MAG NAIL
- CATCH BASIN
- > CULVERT
- DECIDUOUS TREE
- ⊕ FIRE DEPARTMENT CONNECTION
- ⊕ FIRE HYDRANT
- ⊕ GAS METER
- ⊕ HOSE BIB
- ⊕ IRRIGATION CONTROL VALVE
- ⊕ POWER CABINET
- ⊕ POWER METER
- ⊕ POWER VAULT
- ⊕ SANITARY SEWER MANHOLE
- ⊕ SIGN
- SDCO
- STORM DRAIN CLEAN OUT
- STORM DRAIN MANHOLE
- ⊕ TELECOM RISER
- UTILITY POLE
- ⊕ WATER METER
- ⊕ WATER VALVE
- CHAIN LINK FENCE
- HOG WIRE FENCE
- MAJOR CONTOUR LINE
- MINOR CONTOUR LINE
- OHP
- S
- SD
- ASPHALT
- CONCRETE
- (C) CALCULATED DISTANCE
- (M) MEASURED DISTANCE

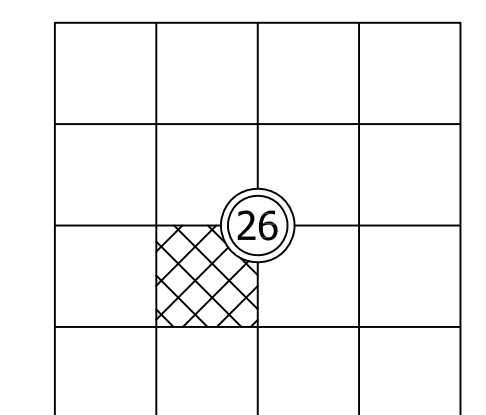
LEGAL DESCRIPTION

(PER DEED OF TRUST, AFN 201810030016)
LOT 7, ACKERSON'S ADDITION TO PUYALLUP,
ACCORDING TO THE PLAT RECORDED IN VOLUME 8
OF PLATS, PAGE 25, RECORDS OF PIERCE COUNTY,
WASHINGTON.

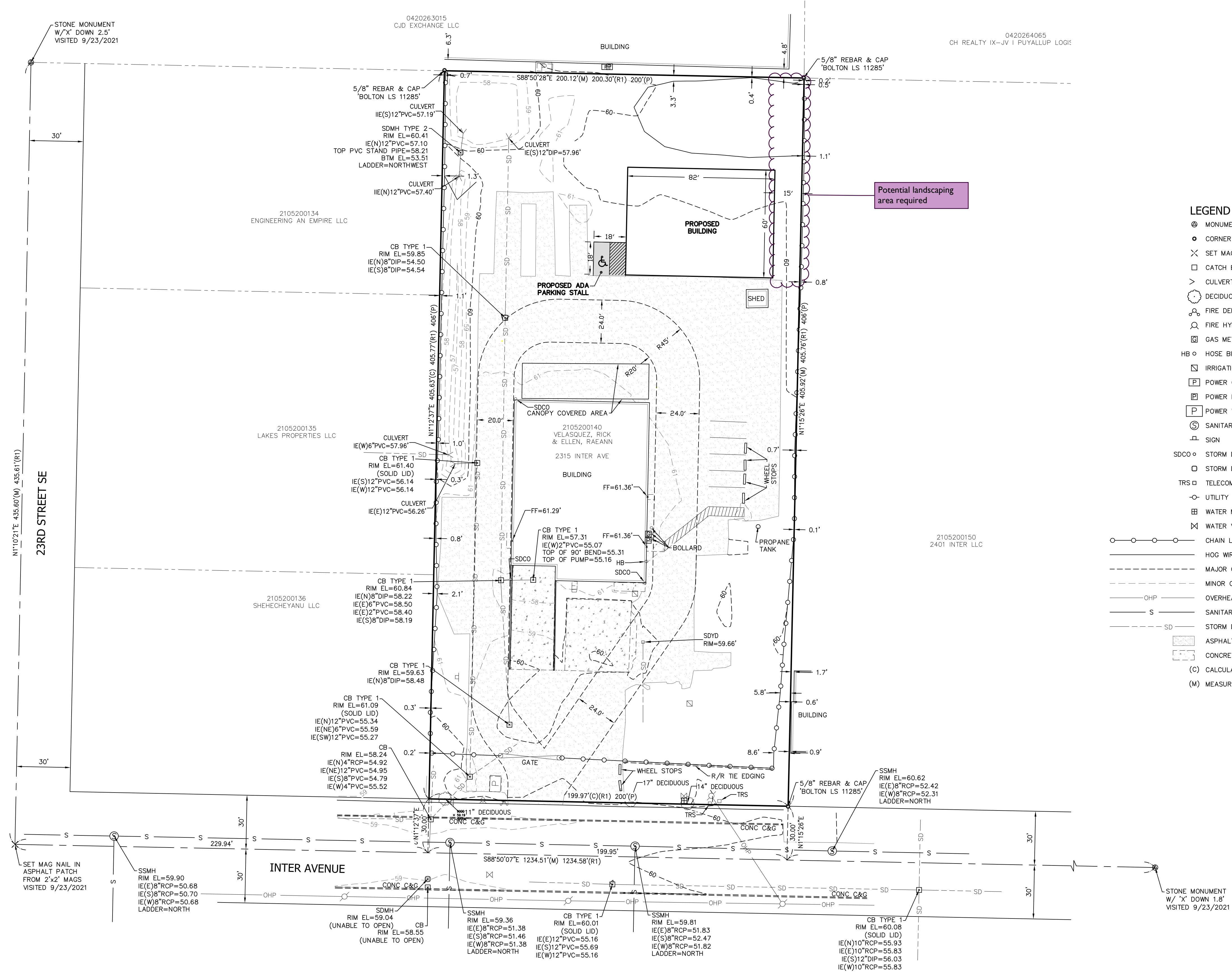
SITUATE IN THE COUNTY OF PIERCE, STATE OF
WASHINGTON.

SURVEYOR'S REFERENCES

- (P) ACKERSON'S 2ND ADDITION TO PUYALLUP, AFN 215387
- (R1) RECORD OF SURVEY, 200801255002



INDEX: IN THE NE 1/4 OF THE
SW 1/4, SEC. 26, TWP. 20 N,
RGE. 4 E, W.M.



LARSON
AND ASSOCIATES

LAND SURVEYORS
ENGINEERS
PLANNERS

9027 PACIFIC AVENUE, SUITE 4
TACOMA, WASHINGTON 98444-6247
(253) 747-3404 / FAX (253) 472-7358

9575 TOPO
5/9/2022