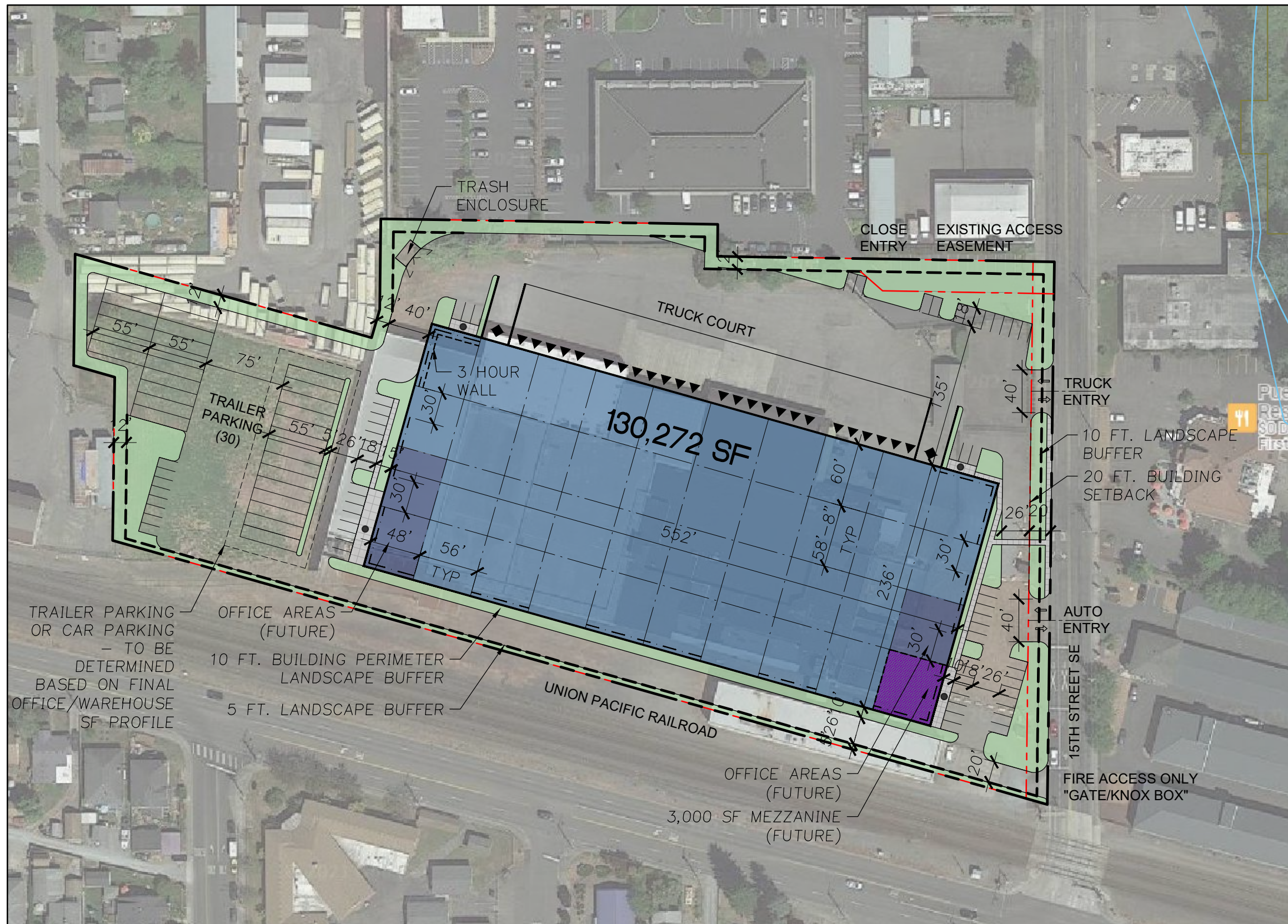


240 15TH ST SE

PUYALLUP, WA

OPTION 1



BUILDING FOOTPRINT:	130,272 SF
MEZZANINE:	3,000 SF
TOTAL AREA W/MEZZANINE:	133,272 SF
SITE AREA:	(7.95 ac) 346,265 SF
SITE COVERAGE:	34.7%

OFFICE AREA (5%):	9,514 SF
WAREHOUSE (95%):	123,758 SF

MIN REQ'D PARKING ALT	
OFFICE (1 PER 300 SF):	32 SPACES
WAREHOUSE (1 PER 3,000SF):	41 SPACES
TOTAL REQ'D:	73 SPACES
PARKING PROVIDED:	65 SPACES

LANDSCAPE AREA:	25,695 SF
LANDSCAPE RATIO:	7.4%

DOCK DOORS:	25
AT-GRADE DOORS:	2

CLEAR HEIGHT:	32FT. CLEAR
---------------	-------------

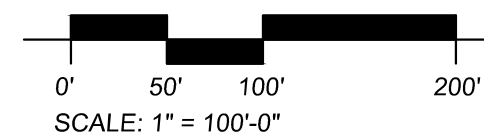
LEGEND

- ◆ DRIVE IN DOOR
- ▼ DOCK DOOR
- LANDSCAPE AREA
- FIRE RATED WALL
- - - ENHANCED FACADE ARTICULATION
- BUILDING ENTRIES

DUKE REALTY
 5628 AIRPORT WAY S
 SUITE 236,
 SEATTLE, WA 98108



240 15TH ST SE



M Portland 503.224.9560 Vancouver 360.695.7879 Seattle 206.749.9993 www.mcknize.com

Architecture - Interiors
 Planning - Engineering

MACKENZIE

JUN 09, 2022

2220190.00