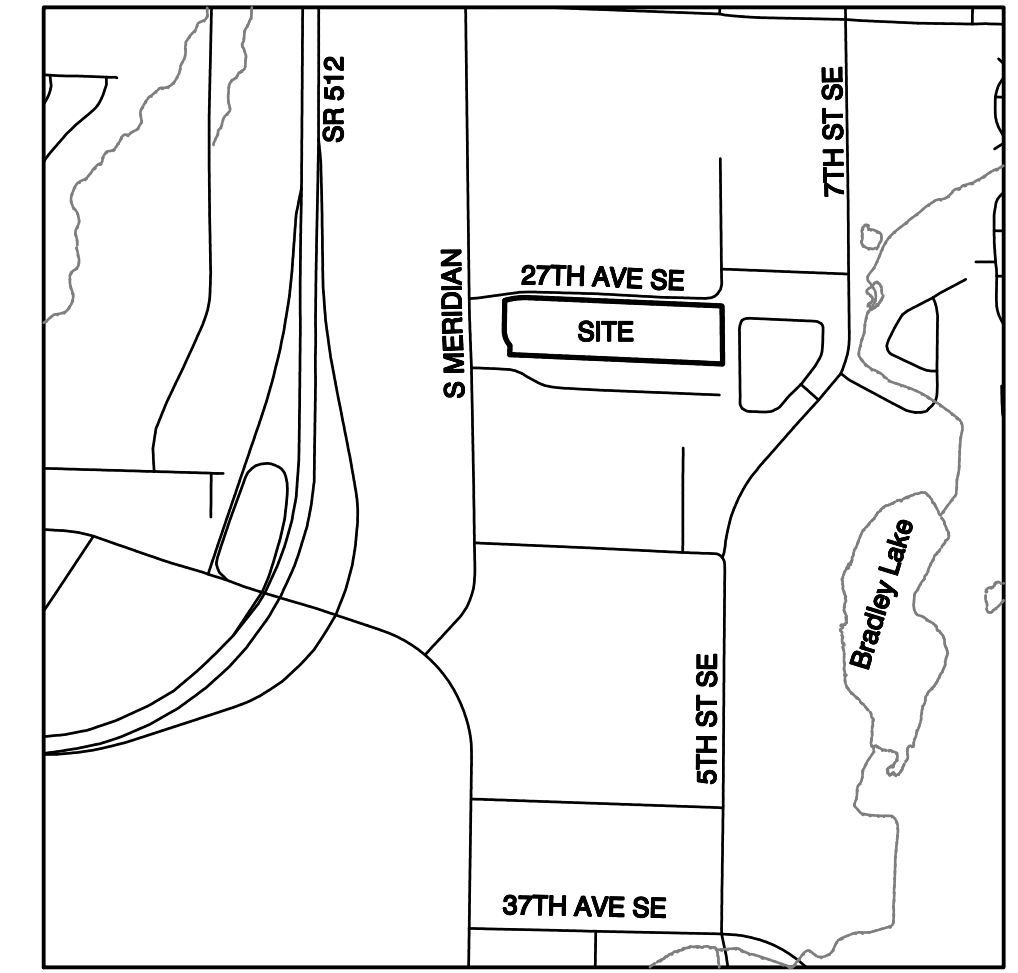
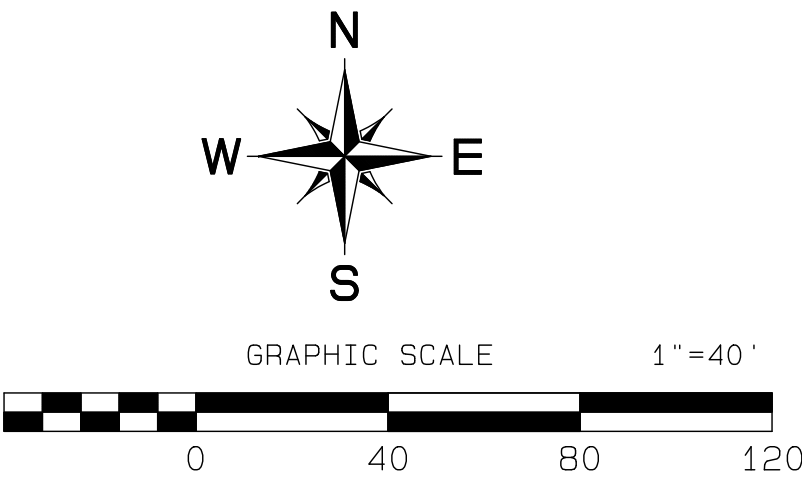
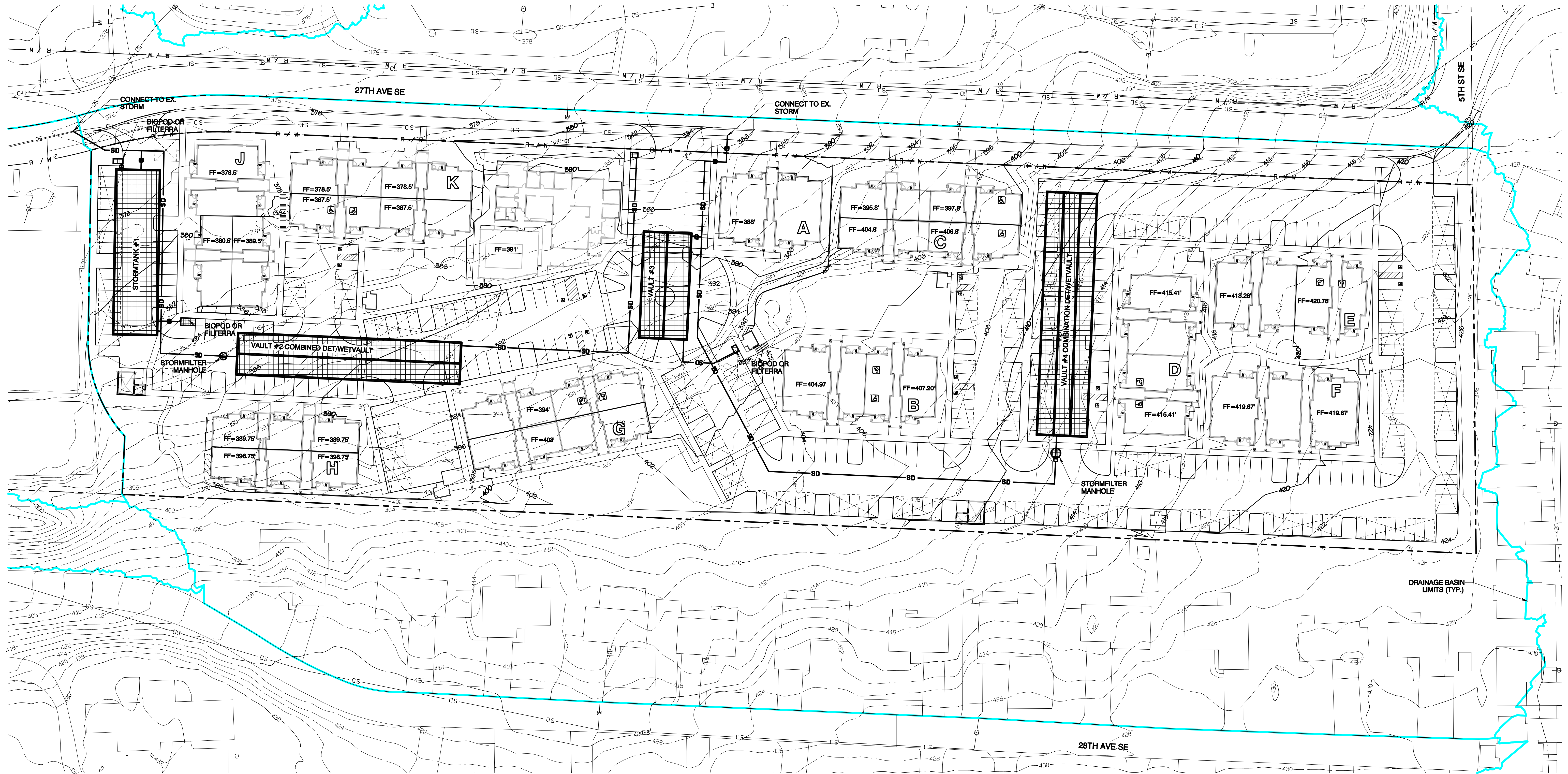


Bradley Heights

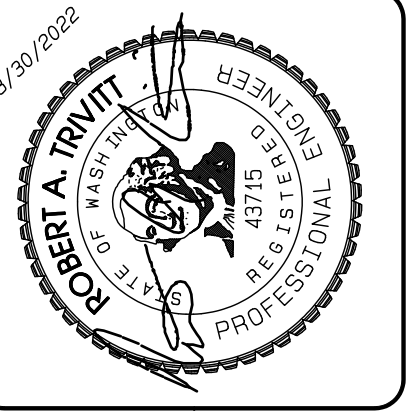
Section 3, Township 19 N, Range 4 E, Willamette Meridian, Pierce County, Washington



VICINITY MAP



Project Desc.: Bradley Heights Date: E:\sub\3227 - Bradley Heights\Time\Drawings\Highways 2022 0328.dwg PLOT Date/Time: 3/30/2022 2:26:42PM



NO.	DATE	DESCRIPTION
1		
2		
3		
4		
5		
6		
7		
8		
9		
10		

JOB NO. 3227
 DATE: March 28, 2022
 DESIGNED BY: RBT, TRV
 DRAWN BY: RBT, TRV
 CHECKED BY: RBT, TRV
 APPROVED BY: RBT, TRV

AZURE GREEN
 CONSULTANTS

+ feasibility + planning + engineering + surveying

409 East Pioneer, Suite A - Puyallup, WA 98372 phone: 253.770.3144 fax: 253.770.3142

Preliminary Drainage Plan
 Bradley Heights

Timberlane Partners
 1816 11th Ave Unit C
 Seattle, WA 98122
 Phone
 Fax

DRAWING
PRE-1
 SHEET 1
 OF 2