

# GRADING AND DRAINAGE PLAN

## FOR PUYALLUP CORPORATE PARK

A PORTION OF THE NE¼ OF THE SW¼ OF SEC. 26, TWP. 20 NORTH, RGE. 4 EAST, W.M.  
CITY OF PUYALLUP, PIERCE COUNTY, WASHINGTON



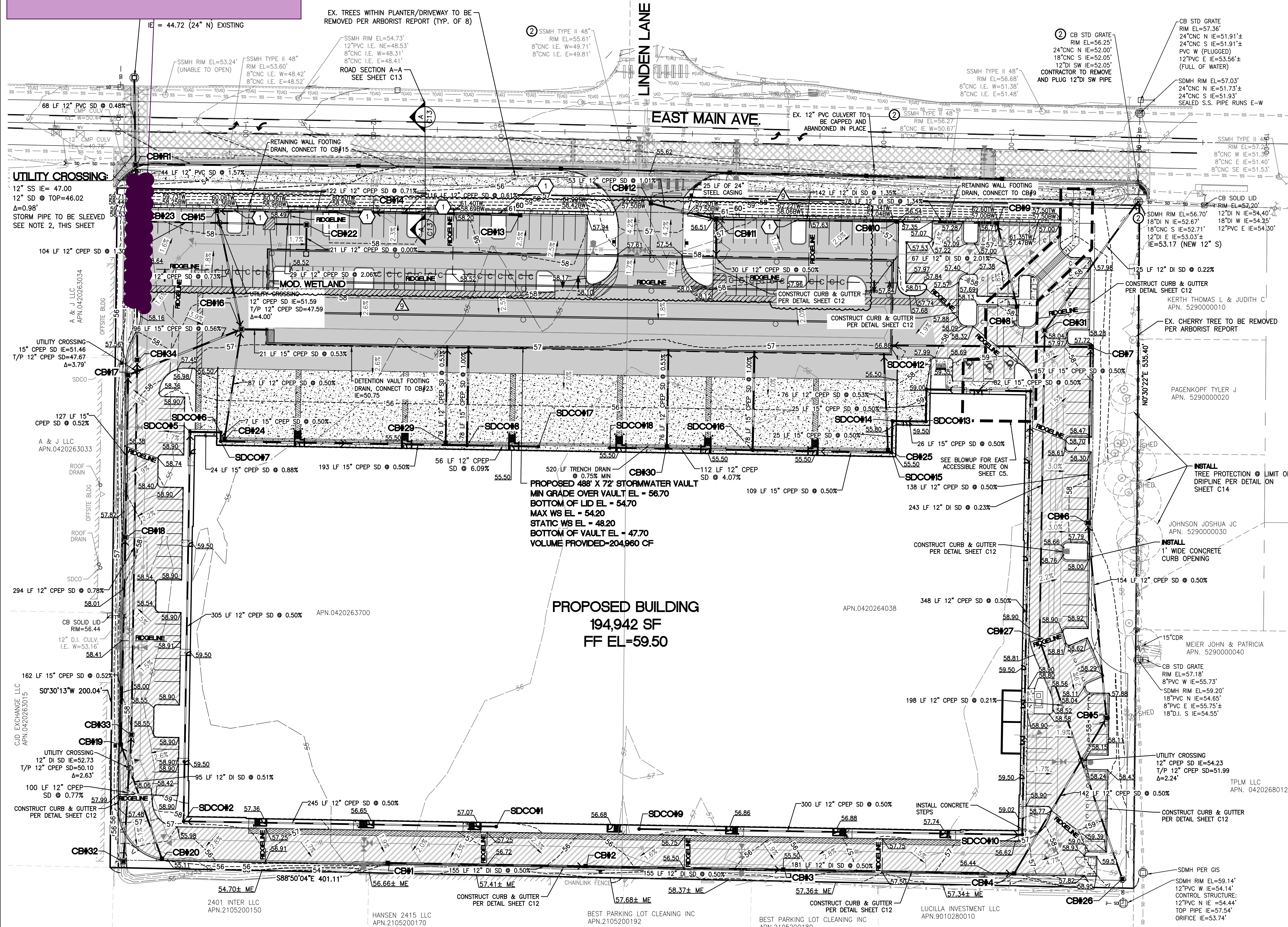
Pedestrian connection from the sidewalk to the NW building entry required per PMC 20.35.025(16). Walkway is shown on landscape plan and site plan, but not on the civil drawings; please correct. Provide elevations of the retaining wall/fence in this area and ensure there are no conflicts with the walkway. Walkway must meet the following standards per code: (a) All walkways shall be a minimum of five feet wide with no encroachments permitted; (b) All walkways shall be handicapped accessible and comply with the Washington State Barrier Free Design Standards; (c) All walkways shall be delineated by painted markings, distinctive pavement, or by being raised a minimum of six inches above the parking lot pavement; (d) Walkways within employee/customer parking lots shall be located along major access corridors, and located away from truck parking and loading/unloading areas whenever possible; and (e) Walkways within employee/customer parking lots shall be integrated into interior landscape areas, whenever possible, to separate pedestrian access and vehicular travel routes (Civil Plan, Sheet C4).

### NOTE:

- ALL SPOT ELEVATIONS ADJACENT CURB REPRESENT TOP OF ASPHALT. CURB TO BE 6-INCH IN HEIGHT UNLESS OTHERWISE SPECIFIED.
- PIPE SLEEVE SHALL BE A SINGLE SECTION OF PVC PIPE (NO JOINTS) WITH A MINIMUM LENGTH OF 10- FEET TO THE NORTH AND MAXIMUM PRACTICAL LENGTH TO THE SOUTH. THE PIPE SLEEVE SHALL BE PLACED AROUND THE STORMWATER PIPE WITH THE ANNULAR SPACE BETWEEN THE SLEEVE AND THE STORMWATER PIPE FILLED WITH GROUT.

### LEGEND

	NEW LIGHT DUTY ASPHALT AND BASE		STORM DRAINAGE CATCH BASIN, TYPE 2-48" W/ STANDARD GRATE
	NEW HEAVY DUTY ASPHALT AND BASE		STORM DRAINAGE CATCH BASIN, TYPE 1 W/ STANDARD GRATE
	CONCRETE AND BASE		
	PROPOSED CONTOUR		
	EXISTING CONTOUR		
	PROPOSED GRADING SLOPE		
			92.25
			92.47± ME
			92.25TW
			92.25BW



CATCH BASINS	CATCH BASINS	CATCH BASINS
CB#1 TYPE 1, W/STANDARD GRATE RIM=55.41 IE=53.95 (12" E)	CB#20 TYPE 1, W/STANDARD GRATE RIM=55.41 IE=53.49 (12" N)	EX. SD CB TYPE 1, W/STANDARD GRATE RIM=53.42 IE=44.72 (12" S) IE=44.72 (24" W) IE=44.72 (24" N)
CB#2 TYPE 1, W/STANDARD GRATE RIM=55.55 IE=53.18 (12" W) IE=53.18 (12" E)	CB#22 TYPE 2, 48" W/SOLID HINGE LID & FLOW CONTROL RISER RIM=58.29 IE=48.20 (12" S) IE=48.20 (12" W)	MOD. WETLAND RIM=58.24 IE=48.20 (12" S) IE=47.10 (12" W)
CB#3 TYPE 1, W/STANDARD GRATE RIM=55.56 IE=52.41 (12" W) IE=52.41 (12" E)	CB#23 TYPE 1, W/STANDARD GRATE RIM=59.05 IE=45.75 (12" E) IE=45.75 (12" S) IE=45.75 (12" N)	SDCO#1 RIM=57.28 IE=54.37 (12" W)
CB#4 TYPE 1, W/STANDARD GRATE RIM=56.25 IE=51.51 (12" W) IE=51.51 (12" NE)	CB#24 TYPE 1, W/STANDARD GRATE RIM=55.40 IE=51.40 (12" N)	SDCO#2 RIM=57.34 IE=53.14 (12" E) IE=53.14 (12" N)
CB#5 TYPE 2, 48" W/STANDARD GRATE RIM=57.72 IE=50.81 (12" SW) IE=50.81 (12" N)	CB#25 TYPE 1, W/STANDARD GRATE RIM=55.40 IE=51.40 (12" N)	SDCO#5 RIM=59.44 IE=51.62 (12" S) IE=50.90 (15" E)
CB#6 TYPE 2, 48" W/STANDARD GRATE RIM=57.55 IE=50.04 (12" S) IE=50.04 (12" N)	CB#26 TYPE 2, 48" W/BIRD CAGE RIM=59.23 IE=54.44 (12" N)	SDCO#6 RIM=55.50 IE=50.69 (15" W) IE=50.69 (15" S)
CB#7 TYPE 2, 48" W/STANDARD GRATE RIM=57.74 IE=49.35 (12" S) IE=49.35 (15" W)	CB#27 TYPE 2, 48" W/SOLID HINGE LID RIM=58.89 IE=54.02 (12" S) IE=54.02 (12" N)	SDCO#7 RIM=55.44 IE=49.69 (15" W) IE=49.69 (15" E)
CB#8 TYPE 1, W/STANDARD GRATE RIM=57.88 IE=55.75 (12" N)	CB#28 TYPE 1, W/STANDARD GRATE RIM=55.40 IE=51.40 (12" N)	SDCO#8 RIM=55.44 IE=49.69 (15" W) IE=49.69 (15" E)
CB#9 TYPE 1, W/STANDARD GRATE RIM=56.53 IE=54.40 (12" S) IE=54.40 (12" W)	CB#29 TYPE 1, W/STANDARD GRATE RIM=55.40 IE=51.40 (12" N)	SDCO#9 RIM=56.77 IE=53.70 (12" E)
CB#10 TYPE 1, W/STANDARD GRATE RIM=56.59 IE=53.35 (12" E) IE=53.35 (12" W)	CB#30 TYPE 2, 48" W/SOLID HINGE LID RIM=57.39 IE=52.19 (12" W) IE=52.19 (12" N)	SDCO#10 RIM=58.11 IE=53.45 (12" S) IE=53.45 (12" NE)
CB#11 TYPE 2, 48" W/STANDARD GRATE RIM=58.11 IE=51.44 (12" E) IE=51.44 (12" S)	CB#31 TYPE 1, W/STANDARD GRATE RIM=55.40 IE=51.40 (12" N)	SDCO#11 RIM=59.35 IE=50.44 (12" S) IE=50.44 (15" W)
CB#12 TYPE 1, W/STANDARD GRATE RIM=56.08 IE=51.98 (12" E)	CB#32 TYPE 2, 48" W/BIRD CAGE RIM=53.68 IE=49.66 (12" N)	SDCO#12 RIM=58.81 IE=50.03 (15" E) IE=50.03 (15" S)
CB#13 TYPE 1, W/STANDARD GRATE RIM=57.23 IE=53.23 (12" W)	CB#33 TYPE 2, 48" W/SOLID HINGE LID RIM=57.97 IE=48.89 (12" S) IE=48.89 (12" N)	SDCO#13 RIM=59.46 IE=49.91 (15" N) IE=49.91 (15" W)
CB#14 TYPE 1, W/STANDARD GRATE RIM=57.45 IE=52.52 (12" E) IE=52.52 (12" W)	CB#34 TYPE 2, 48" W/SOLID HINGE LID RIM=57.97 IE=48.89 (12" S) IE=48.89 (12" N)	SDCO#14 RIM=55.86 IE=49.77 (15" E) IE=49.77 (15" S)
CB#15 TYPE 2, 48" W/STANDARD GRATE RIM=57.65 IE=51.66 (12" E) IE=51.66 (12" S)	CB#1 TYPE 1, W/STANDARD GRATE RIM=55.49 IE=53.95 (12" E)	SDCO#15 RIM=55.44 IE=48.65 (15" N) IE=48.65 (15" W)
CB#16 TYPE 2, 48" W/SOLID HINGE LID RIM=57.33 IE=50.97 (15" W) IE=50.97 (12" N) IE=50.97 (12" S) IE=50.97 (15" E)	CB#2 TYPE 1, W/STANDARD GRATE RIM=55.55 IE=53.18 (12" W) IE=53.18 (12" E)	SDCO#16 RIM=55.44 IE=49.10 (15" E) IE=47.88 (12" W) IE=49.10 (15" N)
CB#17 TYPE 2, 48" W/STANDARD GRATE RIM=57.35 IE=51.51 (15" S) IE=51.51 (15" E)	CB#3 TYPE 1, W/STANDARD GRATE RIM=55.56 IE=53.19 (12" W) IE=53.19 (12" E)	SDCO#17 RIM=55.44 IE=52.44 (12" W)
CB#18 TYPE 2, 48" W/STANDARD GRATE RIM=57.66 IE=52.17 (15" S) IE=52.17 (15" N)	CB#4 TYPE 1, W/STANDARD GRATE RIM=56.25 IE=51.51 (12" W) IE=51.51 (12" NE)	SDCO#18 RIM=55.44 IE=52.25 (12" W)
CB#19 TYPE 1, W/STANDARD GRATE RIM=57.62 IE=53.01 (12" S) IE=53.01 (15" N)	CB#5 TYPE 2, 48" W/STANDARD GRATE RIM=57.72 IE=50.81 (12" SW) IE=50.81 (12" N)	SDCO#19 RIM=55.44 IE=52.25 (12" W)

APPROVED

BY: CITY OF PUYALLUP  
ENGINEERING SERVICES

DATE:

NOTE:  
THIS APPROVAL IS VOID AFTER 1 YEAR FROM APPROVAL DATE. THE CITY WILL NOT BE RESPONSIBLE FOR ERRORS AND/OR OMISSIONS ON THESE PLANS. FIELD CONDITIONS MAY DICTATE CHANGES TO THESE PLANS AS DETERMINED BY THE ENGINEERING SERVICES MANAGER.

GRADING AND DRAINAGE PLAN  
FOR  
PUYALLUP CORPORATE PARK

PANATTON DEVELOPMENT CO.  
900 SW 16TH STREET, SUITE 330  
RENTON, WA 98057



Scale:  
Horizontal 1"=40'  
Vertical 1"=10'

Designed: ZTW  
Drawn: ZTW  
Checked: ZTW  
Approved: DKB  
Date: 5/27/22

**Barghausen Consulting Engineers, Inc.**  
18215 72nd Avenue South  
Kent, WA 98032  
425.251.6222  
barghausen.com

Job Number: 20705  
Sheet: C4 of 23

Revision  
9/15/25/22 ZTW DKB UPDATED PARKING LOT LAYOUT

RMNCEL Xref: 1" = 1" Scale: 1" = 1" Date: 5/27/22