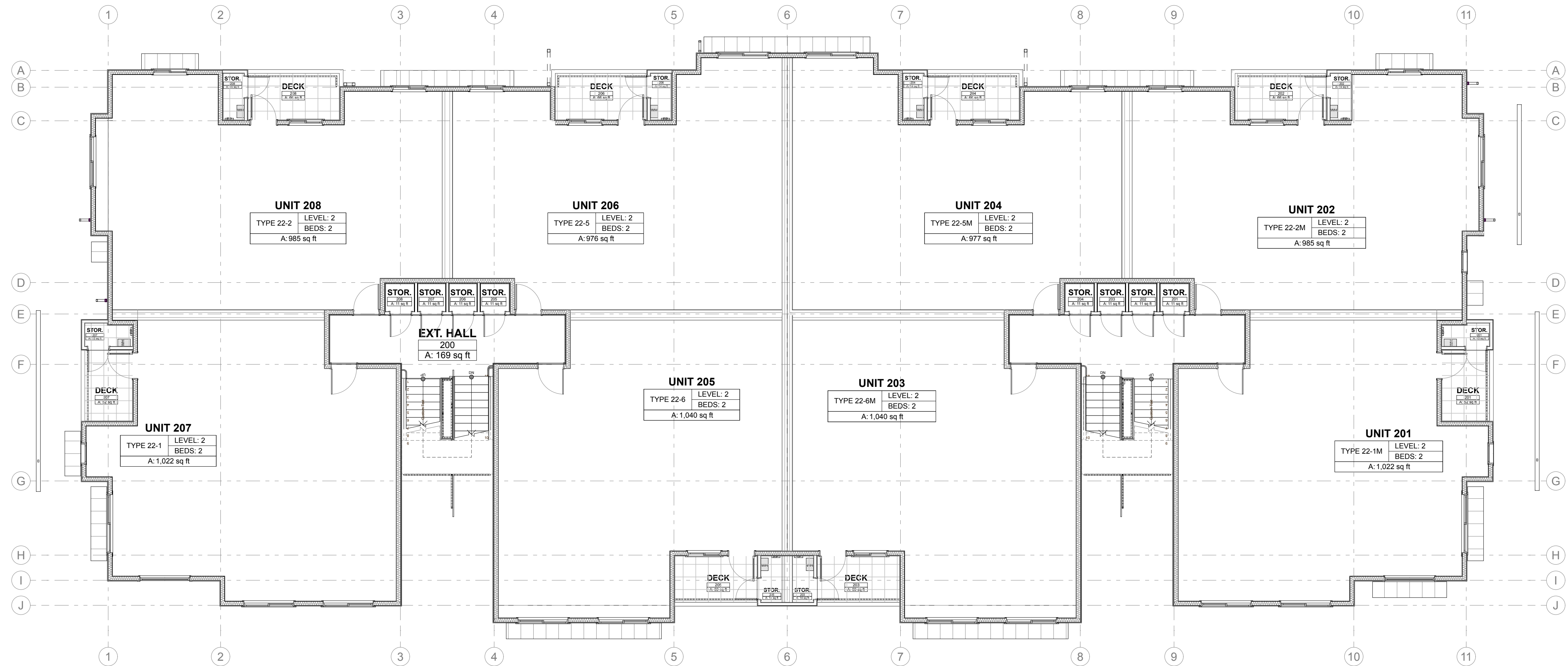


1 LEVEL 1 - OVERALL PLAN



2 LEVEL 2 - OVERALL PLAN

REVISIONS	

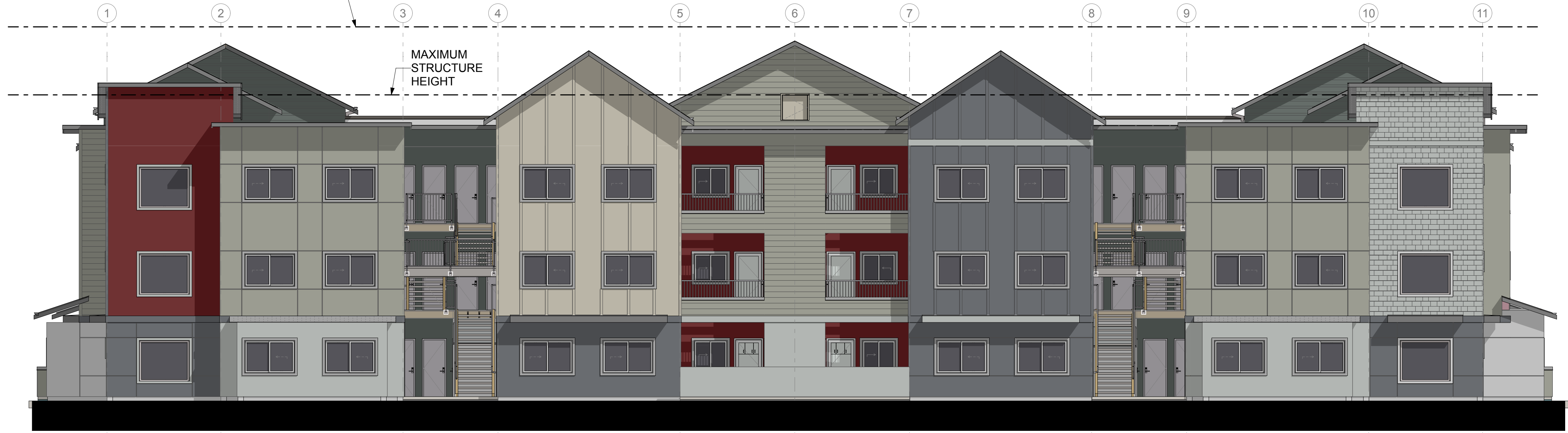
DESIGN REVIEW - REVISION No.1 | 2021.12.21

DRAWN BY: BL / CM
CHECKED BY: BL
DATE: 2021.12.21
TITLE: LEVEL 1 & 2 - OVERALL PLANS
PROJECT #: 2016
SHEET:

PAINT COLORS

URBANE BRONZE (SW 7048)	TYPICAL BUILDING BASE LEVEL COLOR	TYPICAL TRIM, GUTTER and FASCIA
SILVER MOON (1605)		
ASHLAND SLATE (16088)	FOUR COLORS PER BUILDING WITH NO TWO BUILDING MATCHING	
GLOUCESTER SAGE (HC-100)		
OLD CELADON (PPU25-05)		
REVERE PEWTER (PHC-172)		
HOMBURG GRAY (SW 7622)		
NOCTURNAL GRAY (2135-30)		
GREAT BARRIER GREEN (HC-122)		
PEELE GREEN (HC-121)		
WARM STONE (SW 7032)		
MINED COAL (PPU18-18)		

The ridge of a gable, hip, gambrel or similar pitched roof shall not extend over eight feet above the specified maximum height limit.



1 FRONT ELEVATION BUILDING TYPE No. 1
SCALE: 1/8" = 1'-0"

CLADDING TYPES

HARDIE® SMOOTH PANELS BOARD-N-BATTEN

AVAILABLE SIZES

THICKNESS: 0.312"

LENGTH: 108" 120"
WIDTHS: 48" 48"
96" 48"

Warranty Information >

Request a Quote > Request a Sample >

HARDIESHINGLE® SIDING STRAIGHT SHINGLE

AVAILABLE SIZES

THICKNESS: 0.25"

LENGTH: 48" boards

WIDTHS: 15.25" 6.976"

Warranty Information >

Request a Quote > Request a Sample >

HARDIE® PANELS SMOOTH WITH REVEALS

AVAILABLE SIZES

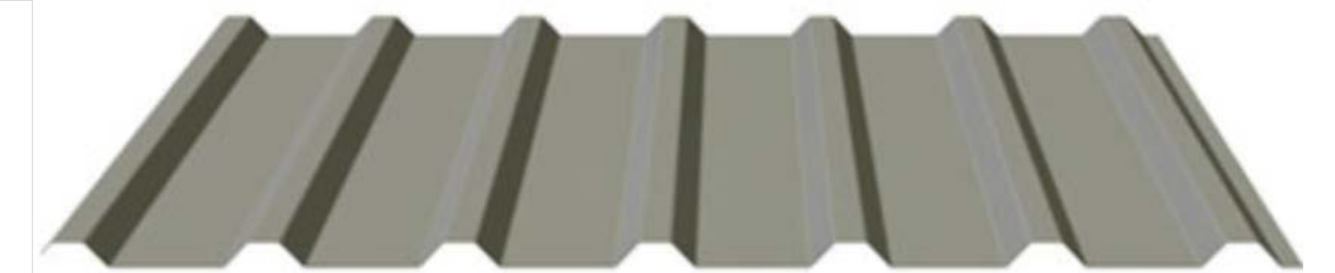
THICKNESS: 0.312"

LENGTH: 108" 120"
WIDTHS: 48" 48"
96" 48"

Warranty Information >

Request a Quote > Request a Sample >

AESPAN® SIDING U-PANEL SIDING PRE-FINISHED METAL SIDING



CLADDING AT ENTRY COURT COOL ZINC GRAY



PRIMED FOR PAINT

James Hardie's primed for paint collection gives you the power to choose paint for your home's exterior. It's primed. It's ready for field painting. It's a durable, high-performance canvas.

HARDIE® SMOOTH PANELS ALTERNATING EXPOSURE

AVAILABLE SIZES

THICKNESS: 0.312"

LENGTH: 108" 120"
WIDTHS: 48" 48"
96" 48"

Warranty Information >

Request a Quote > Request a Sample >

HARDIEPLANK® SMOOTH LAP SIDING REGULAR EXPOSURE

AVAILABLE SIZES

THICKNESS: 0.312"

LENGTH: 144" boards

WIDTHS: 6.25" 8.25"
EXPOSURES: 5" 7"
12" 5.25"
10.75" 4"
7.25" 9.25"
6" 8"

Warranty Information >

Request a Quote > Request a Samp >

PRIMED FOR PAINT

James Hardie's primed for paint collection gives you the power to choose paint for your home's exterior. It's primed. It's ready for field painting. It's a durable, high-performance canvas.

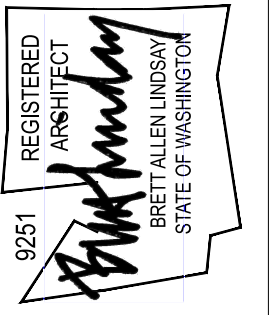


2 RIGHT ELEVATION -BUILDING TYPE No. 1
SCALE: 1/8" = 1'-0"



SYNTHESIS 9, LLC
5214 D ST
TACOMA, WA 98403

REUSE OF DOCUMENTS
THIS DOCUMENT AND THE EXHIBITS HERETO
INCORPORATED HEREIN AS INSTRUMENTS OF
PROFESSIONAL SERVICE ARE THE PROPERTY OF
SYNTHESIS 9, LLC AND ARE NOT TO BE LOANED OR
REPRODUCED IN WHOLE OR IN PART WITHOUT THE
WRITTEN AUTHORIZATION OF SYNTHESIS 9, LLC.



EAST TOWN CROSSING
BUILDING TYPE 1a
BUILDING 'E'
PIONEER & SHAW PUYALLUP WA

REVISIONS

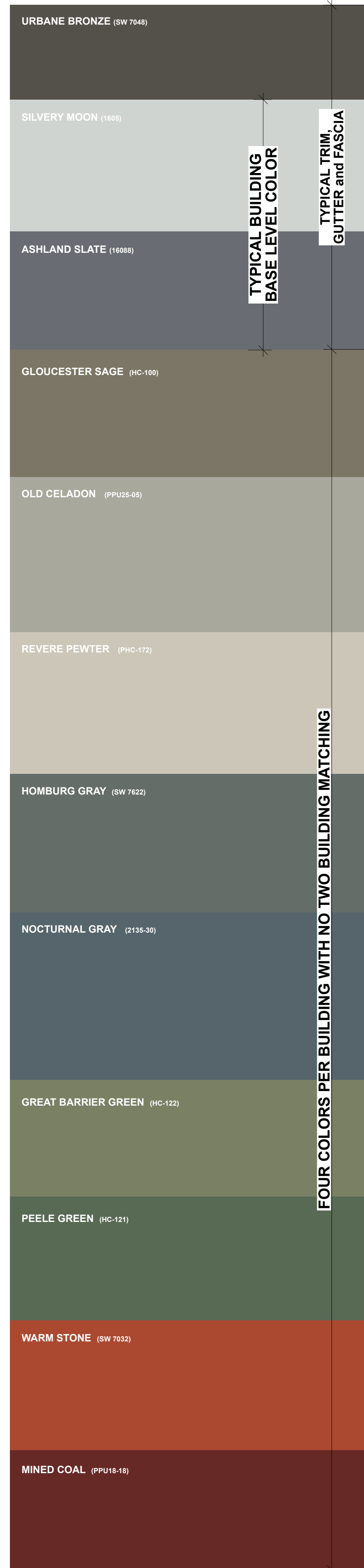
NO.	DESCRIPTION

REVISIONS

DRAWN BY: BL / CM
CHECKED BY: BL
DATE: 2021.12.21
TITLE: BUILDING ELEVATIONS
PROJECT #: 2016
SHEET:

DESIGN REVIEW - REVISION No.1 | 2021.12.21

PAINT COLORS



TYPICAL BUILDING BASE LEVEL COLOR

TYPICAL TRIM, GUTTER and FASCIA

FOUR COLORS PER BUILDING WITH NO TWO BUILDING MATCHING



1 REAR ELEVATION - BUILDING TYPE No. 1
SCALE: 1/8" = 1'-0"

CLADDING TYPES

HARDIE® SMOOTH PANELS BOARD-N-BATTEN

THICKNESS:	0.312"	
LENGTH:	108"	120"
WIDTHS:	48"	48"
	96"	48"

[Warranty Information >](#)
[Request a Quote >](#) [Request a Sample >](#)

HARDIESHINGLE® SIDING STRAIGHT SHINGLE

THICKNESS:	0.25"	
LENGTH:	48" boards	
WIDTHS:	15.25"	
EXPOSURES:	6.976"	

[Warranty Information >](#)
[Request a Quote >](#) [Request a Sample >](#)

HARDIE® PANELS SMOOTH WITH REVEALS

THICKNESS:	0.312"	
LENGTH:	108"	120"
WIDTHS:	48"	48"
	96"	48"

[Warranty Information >](#)
[Request a Quote >](#) [Request a Sample >](#)

AESPAN® SIDING U-PANEL SIDING PRE-FINISHED METAL SIDING

CLADDING AT ENTRY COURT
COOL ZINC GRAY

PRIMED FOR PAINT

James Hardie's primed for paint collection gives you the power to choose paint for your home's exterior. It's primed. It's ready for field painting. It's a durable, high-performance canvas.

HARDIE® SMOOTH PANELS ALTERNATING EXPOSURE

THICKNESS:	0.312"	
LENGTH:	108"	120"
WIDTHS:	48"	48"
	96"	48"

[Warranty Information >](#)
[Request a Quote >](#) [Request a Sample >](#)

PRIMED FOR PAINT

James Hardie's primed for paint collection gives you the power to choose paint for your home's exterior. It's primed. It's ready for field painting. It's a durable, high-performance canvas.

HARDIEPLANK® SMOOTH LAP SIDING REGULAR EXPOSURE

THICKNESS:	0.312"	
LENGTH:	144" boards	
WIDTHS:	6.25"	8.25"
EXPOSURES:	5"	7"
	12"	5.25"
	10.75"	4"
	7.25"	9.25"
	6"	8"

[Warranty Information >](#)
[Request a Quote >](#) [Request a Samp >](#)



2 LEFT ELEVATION - BUILDING TYPE No. 1
SCALE: 1/8" = 1'-0"

DESIGN REVIEW - REVISION No.1 | 2021.12.21

S9

SYNTHESIS 9, LLC
1376 D ST
TACOMA, WA 98403

REUSE OF DOCUMENTS
THIS DOCUMENT AND THE DRAWINGS DESIGN OR
INCORPORATED HEREIN ARE THE PROPERTY OF
SYNTHESIS 9, LLC AND ARE NOT TO BE USED OR
REPRODUCED IN WHOLE OR IN PART WITHOUT THE
WRITTEN AUTHORIZATION OF SYNTHESIS 9, LLC.

REGISTERED ARCHITECT
Frank Maloney
FRANK MALONEY
1216 TALEN LINDSEY
STATE OF WASHINGTON

EAST TOWN CROSSING
BUILDING TYPE 1a
BUILDING 'E'
PIONEER & SHAW PUYALLUP WA

REVISIONS	

DRAWN BY: BL / CM
CHECKED BY: BL
DATE: 2021.12.21
TITLE: BUILDING ELEVATIONS
PROJECT #: 2016
SHEET:



1 FACADE ARTICULATION - FRONT - BUILDING TYPE No. 1
SCALE: 1/8" = 1'-0"

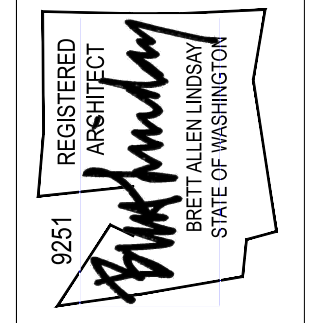
PMC 20.26.200 FEATURES CHOSEN:

- (4) Multifamily Menu Options to Achieve Variety in Architectural Massing.
 - (ii) Modulating building facade characterized by intervals no wider than 24 feet with at least a two-foot offset between each interval.
 - (iv) Roofline variety in buildings over one story in height such that no ridgeline is greater than 24 feet in length without a two-foot vertical or sloped offset that creates a new ridgeline that is at least 10 feet in length.
 - (v) A stand of trees with a canopy of 1,000 square feet (as measured in frontal view rather than top view) located no farther than 20 feet from a facade of the building, consisting of either existing trees, or planted trees.



SYNTHESIS 9, LLC
523 N. D ST
TACOMA, WA 98403

REUSE OF DOCUMENTS
THIS DOCUMENT AND THE DESIGNATIONS INCORPORATED HEREIN AS INSTRUMENTS OF PROFESSIONAL SERVICE ARE THE PROPERTY OF SYNTHESIS 9, LLC AND ARE NOT TO BE USED OR REPRODUCED IN WHOLE OR IN PART WITHOUT THE WRITTEN AUTHORIZATION OF SYNTHESIS 9, LLC.



EAST TOWN CROSSING
BUILDING TYPE 1a
BUILDING 'E'
PIONEER & SHAW PUYALLUP WA

REVISIONS

NO.	DESCRIPTION

REVISIONS

DRAWN BY: BL / CM
CHECKED BY: BL
DATE: 2021.12.21
TITLE: ARTICULATION
PROJECT #: 2016
SHEET:

DESIGN REVIEW - REVISION No.1 | 2021.12.21



1 FACADE ARTICULATION - REAR - BUILDING TYPE No. 1
 SCALE: 1/8" = 1'-0"

EAST TOWN CROSSING
 BUILDING TYPE 1a
 BUILDING 'E'
 PIONEER & SHAW PUYALLUP WA

REVISIONS

NO.	DESCRIPTION	DATE

REVISIONS

DRAWN BY: BL / CM
 CHECKED BY: BL
 DATE: 2021.12.21
 TITLE: ARTICULATION
 PROJECT #: 2016
 SHEET: