

HABITAT TECHNOLOGIES

CRITICAL AREAS ASSESSMENT

**Parcel 0419095003
433 - 43rd Avenue SW
City of Puyallup, Washington**

This document incorporates comments provided by City of Puyallup review

prepared for

**Mr. David Artz
7917 - 110th Street NW
Gig Harbor, Washington 98332**

prepared by

**HABITAT TECHNOLOGIES
P.O. Box 1088
Puyallup, Washington 98371-1088
253-845-5119**

**June 4, 2019
REVISED
September 18, 2020**

Table of Contents

INTRODUCTION.....	1
PROJECT SITE DESCRIPTION	1
BACKGROUND INFORMATION	2
NATIONAL WETLAND INVENTORY	2
STATE OF WASHINGTON PRIORITY HABITATS AND SPECIES	2
STATE OF WASHINGTON DEPARTMENT OF FISH AND WILDLIFE	2
STATE OF WASHINGTON DEPARTMENT OF NATURAL RESOURCES.....	2
CITY OF PUYALLUP MAPPING	2
SOILS MAPPING.....	3
PRIOR ASSESSMENTS.....	3
ONSITE ANALYSIS	3
CRITERIA FOR CRITICAL AREAS IDENTIFICATION	3
STUDY METHODS.....	4
FIELD OBSERVATION.....	5
<input type="checkbox"/> <i>Plant Communities</i>	5
<input type="checkbox"/> <i>Hydrology</i>	6
<input type="checkbox"/> <i>Soils</i>	6
<input type="checkbox"/> <i>Fish and Wildlife</i>	7
CRITICAL AREAS DETERMINATION.....	9
WETLANDS	9
FISH AND WILDLIFE HABITAT AREAS	9
SELECTED DEVELOPMENT ACTION.....	10
STANDARD OF CARE	10
REFERENCE AND BACKGROUND LIST	12
APPENDIX A – REPRESENTATIVE FIELD DATA	14
APPENDIX B – WETLAND RATING WORKSHEET	15
APPENDIX C – SITE PLAN.....	16

INTRODUCTION

This document details the culmination of activities and onsite evaluations undertaken to complete a critical areas assessment (i.e. wetlands, streams, fish and wildlife habitats) of **Parcel 0419095003** and a septic easement area within parcel 0419091068 (**Project site**). The project site was located at 433 - 43rd Avenue SW within the City of Puyallup, Pierce County, Washington (Figure 1). The evaluation and characterization of onsite and adjacent critical areas is a vital element in land use planning. The goal of this approach is to ensure that the proposed development of a single duplex and associated primary and reserve septic drainfield areas does not result in adverse environmental impacts to an identified City of Puyallup Category III Wetland and the associated 60-foot standard City of Puyallup buffer identified within the project site. As presently proposed all development activities would be accomplished without an encroachment into the identified wetland or associated 60-foot buffer.

The assessment and delineation of specific critical areas within and immediately adjacent to the project site followed the methods and procedures defined in the *Corps of Engineers Wetland Delineation Manual* (United States Army Corps of Engineers, 1987) with the *Regional Supplement to the Corps of Engineers Wetland Delineation Manual: Western Mountains, Valleys, and Coast Region* (United States Army Corps of Engineers, 2010); the Washington State *Wetland Rating System for Western Washington* (Hruby, 2014), the State of Washington Department of Natural Resources (WDNR) Forest Practice Rules (WAC 222-16-030), and the City of Puyallup Chapter 21. This document was designed to accommodate site planning and potential regulatory actions and is suitable for submittal to federal, state, and local authorities for potential critical areas verification and permitting actions.

PROJECT SITE DESCRIPTION

The project site was composed of an existing vacant parcel of record totaling approximately 1.25-acres in size. As outlined below the majority of the project site was encumbered by wetland and wetland buffers. The project site was located within an area of increasing urbanization focusing on more intense commercial retail and higher intensity residential development. The southern boundary of the project site was formed by 43rd Avenue SW. A single-family homesite on a large parcel was noted to the west and vacant lands were present to the north and east.

Directions to Project Site: From Meridian Avenue East (southbound) turn west onto 43rd Avenue SW. Continue on 43rd Avenue SW to the project site at 433 - 43rd Avenue SW.

BACKGROUND INFORMATION

NATIONAL WETLAND INVENTORY

The *National Wetland Inventory (NWI) Mapping* completed by the U.S. Fish and Wildlife Service was reviewed as a part of this assessment (Figure 2). This mapping resource identified a wetland complex throughout the majority of the project site. This wetland was identified as palustrine, forested, seasonally flooded (PFOC); and palustrine, scrub-shrub, seasonally flooded (PSSC) within the project site.

STATE OF WASHINGTON PRIORITY HABITATS AND SPECIES

The State of Washington *Priority Habitats and Species (PHS) Mapping* was reviewed as a part of this assessment (Figure 3). This mapping resource identified the same wetland areas within and adjacent to the project site as the *NWI Mapping* above.

STATE OF WASHINGTON DEPARTMENT OF FISH AND WILDLIFE

The State of Washington Department of Fish and Wildlife (WDFW) *SalmonScape Mapping* was reviewed as a part of this assessment (Figure 4). This mapping resource did not identify any drainage corridors within or adjacent to the project site. This mapping resource did identify a pond generally adjacent to the eastern boundary in the central portion of the project site.

STATE OF WASHINGTON DEPARTMENT OF NATURAL RESOURCES

The State of Washington Department of Natural Resources (WDNR) *Water Type Mapping* was reviewed as a part of this assessment (Figure 5). This mapping resource generally identified the same wetland noted in the NWI Mapping Resource above within the project site. This mapping resource further noted a pond adjacent to the eastern boundary as noted in the WDFW Mapping above. This mapping noted this pond as a Type F Water (fish-bearing).

CITY OF PUYALLUP MAPPING

The *City of Puyallup Inventory Mapping* was reviewed as a part of this assessment (Figure 6). This mapping resource generally identified the wetland noted in the other mapping

resources above within the project site and adjacent properties. This wetland was further identified as “field verified” by the City of Puyallup.

SOILS MAPPING

The *Soil Mapping Inventory* completed by the Natural Resources Conservation Service was reviewed as a part of this assessment (Figure 7). This mapping resource identified the soil throughout the majority of project site as Norma fine sandy loam (26A). The Norma soil series is defined as poorly drained; as formed in alluvium under sedges; and as listed as a “hydric” soil.

This mapping resource further noted the southern portion of the project site to contain Everett gravelly sandy loam (13B). The Everett soils series is defined as somewhat excessively drained, as formed in glacial outwash, and as not listed as “hydric” soil.

PRIOR ASSESSMENTS

Habitat Technologies had completed prior assessments for parcels within the surrounding area of the project site. These prior assessments had identified a wetland complex within the area. This wetland complex was ditched along the western boundary then entered a culvert within the Willow Springs Apartment complex. This drainage continued through a series of ditch lines, pipes, and culverts to eventually enter a Pierce County Storm Pond adjacent to 89th Avenue Court East (Figure 8). This storm pond did not appear to exhibit an outflow.

ONSITE ANALYSIS

CRITERIA FOR CRITICAL AREAS IDENTIFICATION

The City of Puyallup defines “critical areas” to include wetlands, fish and wildlife habitat areas, critical aquifer recharge areas, geologically hazardous areas, and frequently flooded areas. The critical areas assessment reported in this document has been limited to address wetlands and fish and wildlife habitat areas.

Wetlands: Wetlands are transitional areas between aquatic and upland habitats. In general terms, wetlands are lands where the extent and duration of saturation with water is the primary factor determining the nature of soil development and the types of plant and animal communities living in the soil and on its surface (Cowardin, et al., 1979). Wetlands are generally defined within land use regulations as "areas that are inundated or saturated by surface or groundwater at a frequency and duration sufficient to support,

and that under normal circumstances do support, a prevalence of vegetation typically adapted for life in saturated soil conditions" (US Army Corps of Engineers 1987).

Wetlands exhibit three essential characteristics, all of which must be present for an area to meet the established criteria (United States Army Corps of Engineers, 1987 and United States Army Corps of Engineers, 2010). These essential characteristics are:

1. **Hydrophytic Vegetation:** The assemblage of macrophytes that occurs in areas where inundation or soil saturation is either permanent or of sufficient frequency and duration to influence plant occurrence. Hydrophytic vegetation is present when the plant community is dominated by species that require or can tolerate prolonged inundation or soil saturation during the growing season.
2. **Hydric Soil:** A soil that formed under conditions of saturation, flooding, or ponding long enough during the growing season to develop anaerobic conditions in the upper parts. Most hydric soils exhibit characteristic morphologies that result from recent periods of saturation or inundation. These processes result in distinctive characteristics that persist in the soil during both wet and dry periods.
3. **Wetland Hydrology:** Permanent or periodic inundation, or surface soil saturation, at least seasonally. Wetland hydrology indicators are used in combination with indicators of hydric soil and hydrophytic vegetation to define the area. Wetland hydrology indications provide evidence that the site has a continuing wetland hydrology regime. Where hydrology has not been altered vegetation and soils provide strong evidence that wetland hydrology is present.

Fish and Wildlife Habitat Areas: The City of Puyallup has defined "fish and wildlife habitat areas" to include those areas necessary for maintaining species in suitable habitats within their natural geographic distribution so that isolated subpopulations are not created as designated by WAC 365-190-080. These areas include:

- (a) Areas with which state or federally designated endangered, threatened, and sensitive species have a primary association;
- (b) Habitats of local importance, including but not limited to areas designated as priority habitat by the Department of Fish and Wildlife;
- (c) Streams and surface waters within the jurisdiction of the state of Washington; and
- (d) Land essential for preserving connections between habitats and open spaces.

STUDY METHODS

Habitat Technologies completed a series of onsite assessments from May through early-September 2018 and again in the late spring and summer of both 2019 and 2020. In

addition, Habitat Technologies has completed similar critical areas assessments for the parcels associated with the project site as well as parcels located within the general area of the project site. The objective of this evaluation was to define and delineate potential critical areas (wetlands; drainage corridors; and fish and wildlife habitats) that may be present within or immediately adjacent to the project area. Onsite activities were completed in accordance with criteria and procedures established in the *Corps of Engineers Wetland Delineation Manual* (United States Army Corps of Engineers, 1987) with the *Regional Supplement to the Corps of Engineers Wetland Delineation Manual: Western Mountains, Valleys, and Coast Region* (United States Army Corps of Engineers, 2010); the *Washington State Wetland Rating System for Western Washington* (Hruby, 2014), the State of Washington Department of Natural Resources (WDNR) Forest Practice Rules (WAC 222-16-030), and the City of Puyallup Chapter 21.

FIELD OBSERVATION

The project site was accessed via 43rd Avenue SW that formed the southern boundary of the project site. The southern portion of the project site appeared to contain a historic fill pad that was overgrown with blackberries and contained a small “tent city” during the onsite assessments period. The southern project site was also heavily littered with garbage and debris from the onsite campers. The majority of the central and northern portion of the project site was encumbered by a portion of a wetland complex within area parcels. Representative field data are provided in Appendix A.

- **Plant Communities**

As noted above the southern project site had been modified by the placement of historic fill and had become overrun with primarily Himalayan blackberry (*Rubus armeniacus*).

The plant community located directly to the north of the historic fill placement was dominated by species typically associated with seasonal saturation or seasonal shallow ponding. Observed species included black cottonwood (*Populus trichocarpa*), red alder (*Alnus rubra*), Western red cedar (*Thuja plicata*), Oregon ash (*Fraxinus latifolia*), Pacific willow (*Salix lasiandra*), Sitka willow (*Salix sitchensis*), crabapple (*Pyrus fusca*), Douglas spirea (*Spiraea douglasii*), salmonberry (*Rubus spectabilis*), Himalayan blackberry (*Rubus armeniacus*), Pacific ninebark (*Physocarpus capitatus*), black twinberry (*Lonicera involucrata*), red osier dogwood (*Cornus stolonifera*), Nootka rose (*Rosa nutkana*), common lady fern (*Athyrium filix-femina*), deer fern (*Blechnum spicant*), maiden hair fern (*Adiantum pedatum*), cattail (*Typha latifolia*), skunk cabbage (*Lysichiton americanum*), small fruited bulrush (*Scirpus microcarpus*), slough sedge (*Carex obnupta*), water parsley (*Oenanthe sarmentosa*), speedwell (*Veronica scutellata*), buttercup (*Ranunculus repens*), curled dock (*Rumex crispus*), big leaf avens (*Geum macrophyllum*), reed canarygrass (*Phalaris arundinacea*), and reed mannagrass (*Glyceria grandis*). This plant community was identified as hydrophytic in character (i.e. typical of wetlands).

Along the western boundary the project site and adjacent parcel to the west a remnant upland forest community was noted. Observed species included Douglas fir (*Pseudotsuga menziesii*), Western red cedar (*Thuja plicata*), Western hemlock (*Tsuga heterophylla*), red alder (*Alnus rubra*), big leaf maple (*Acer macrophyllum*), cherry (*Prunus* spp.), Himalayan blackberry, evergreen blackberry (*Rubus laciniatus*), salal (*Gaultheria shallon*), Oregon grape (*Berberis nervosa*), holly (*Ilex aquifolium*), rose (*Rosa* spp.), Indian plum (*Oemleria cerasiformis*), Pacific red elderberry (*Sambucus racemosa*), salmonberry (*Rubus spectabilis*), Oceanspray (*Holodiscus discolor*), foam flower (*Tiarella trifoliata*), sword fern (*Polystichum munitum*), bracken fern (*Pteridium aquilium*), nettle (*Urtica dioica*), bluegrass (*Poa* spp.), daisy (*Bellis perennis*), clover (*Trifolium* spp.), bleeding heart (*Dicentra Formosa*), and buttercup. This plant community was identified as non-hydrophytic in character (i.e. typical of uplands).

- **Hydrology**

Onsite hydrology appeared to be the result of seasonal stormwater runoff from onsite, seasonal stormwater runoff from adjacent parcels and adjacent public roadways, and onsite soil characteristics. The southern portion (prior fill area) of the project site appeared to drain moderately well and did not exhibit field indicators typically associated with wetland hydrology.

The majority of the project site appeared to drain somewhat poorly to poorly. A portion of a wetland complex within the area dominated the area to the north of the southern prior fill area. As noted during prior assessments this wetland was ditched along the western boundary of the wetland offsite to the northwest. Seasonal hydrology from the wetland then entered a culvert within the Willow Springs apartment complex. This hydrology continued through a series of ditch lines, pipes, and culverts then eventually entered a Pierce County Storm Pond adjacent to 89th Avenue Court East.

- **Soils**

As noted above the project site had been modified by the historic prior placement of fill material in the southern portion of the project site. Within remnant upland areas the soil exhibited a gravelly sandy loam to gravelly loam texture and coloration typical of an Everett soil series. The surface soil typically exhibited a very dark grayish brown (10YR 3/2) coloration and a gravelly sandy loam to gravelly loam texture. The subsoil to a depth of approximately 20 inches also exhibited a dark brown (10YR 3/3) to brown (10YR 4/3) coloration, and gravelly sandy loam to gravelly loam texture. This soil was identified as non-hydric in character.

The soil identified throughout the majority of the project site exhibited a surface soil coloration of very dark grayish brown (10YR 3/2) to black (10YR 2/1). The subsoil varied

from black (10YR 2/1) to dark grayish brown (10YR 4/2) and exhibited prominent redoximorphic features (i.e. depleted matrix and redox concentrations). Oxidized root channels were also very evident. The soil ranged from gravelly loam, silt loam, to muck in texture. The soils within the majority of the project site exhibited field characteristics typical of hydric soil.

- **Fish and Wildlife**

Wildlife species observed or that would be reasonably expected to utilize the habitats provided within or adjacent to the project site would include red tailed hawk (*Buteo jamaicensis*), American crow (*Corvus brachyrhynchos*), American robin (*Turdus migratorius*), black capped chickadee (*Parus atricapillus*), dark eyed junco (*Junco hyemalis*), rufous hummingbird (*Selasphorus rufus*), merlin (*Falco columbarius*), golden crowned sparrow (*Zonotrichia atricapilla*), mourning dove (*Zenaidura macroura*), song sparrow (*Melospiza melodia*), white crowned sparrow (*Zonotrichia leucophrys*), house sparrow, house finch (*Carpodacus mexicanus*), starling (*Sturnus vulgaris*), American goldfinch (*Carduelis tristis*), purple finch (*Carpodacus purpureus*), violet green swallow (*Tachycineta thalassina*), tree swallow (*Tachycineta bicolor*), red winged blackbird (*Agelaius phoeniceus*), brewer blackbird (*Euphagus cyanocephalus*), marsh wren (*Cistothorus palustris*), great blue heron (*Ardea herodias*), common mallard (*Anas platyrhynchos*), Canada goose (*Branta canadensis*), northern flicker (*Colaptes auratus*), hairy woodpecker (*Picoides villosus*), black tailed deer (*Odocoileus hemionus*), raccoon (*Procyon lotor*), coyote (*Canis latrans*), striped skunk (*Mephitis mephitis*), opossum (*Didelphis virginianus*), deer mouse (*Peromyscus maniculatus*), shrew (*Sorex* spp.), Townsend mole (*Scapanus townsendii*), voles (*Microtus* spp.), Norway rat (*Rattus norvegicus*), bats (*Myotis* spp.), eastern gray squirrel (*Sciurus carolinensis*), common garter snake (*Thamnophis sirtalis*), Pacific treefrog (*Hyla regilla*), and red legged frog (*Rana aurora*). The project site was not evaluated for the presence or absences of fish species since all seasonal drainage enters an offsite storm pond that appears to fully infiltrate.

Wildlife Movement Corridors: The project site was within a well urbanized area. As identified by onsite wildlife trials, small and medium sized mammals appeared to be moving throughout vacant parcels generally to the east and southeast of the project site. The project site is also within the general area of the migratory movement of waterfowl and passerine birds.

State Priority Species: Several species identified by the State of Washington as “Priority Species” were observed onsite or potentially may utilize the project site. Priority species require protective measures for their survival due to their population status, sensitivity to habitat alteration, and/or recreational, commercial, or tribal importance.

Game Species: “Game species” are regulated by the State of Washington through recreational hunting bag limits, harvest seasons, and harvest area

restrictions. Observed, documented, or reasonably expected “game species” within and adjacent to the project site included black tailed deer, mourning dove, common mallard, and Canada goose.

State Monitored: State Monitored species are native to Washington but require habitat that has limited availability, are indicators of environmental quality, require further assessment, have unresolved taxonomy, may be competing with other species of concern, or have significant popular appeal. Observed, documented, or reasonably expected “State Monitored” species within and adjacent to the project site included great blue heron.

State Candidate: State Candidate species are presently under review by the State of Washington Department of Fish and Wildlife (WDFW) for possible listing as endangered, threatened, or sensitive. No State Candidate species were observed or have been documented to use the habitats associated with the project site.

State Sensitive: State Sensitive species are native to Washington and is vulnerable to declining and is likely to become endangered or threatened throughout a significant portion of its range without cooperative management or removal of threats. No State Sensitive species were observed or have been documented to use the habitats associated with the project site.

State Threatened: State Threatened species means any wildlife species native to the state of Washington that is likely to become an endangered species within the foreseeable future throughout a significant portion of its range within the state without cooperative management or removal of threats. The project site did not appear and has not been documented to provide direct critical habitats for State Listed Threatened species.

State Endangered: State endangered species means any species native to the state of Washington that is seriously threatened with extinction throughout all or a significant portion of its range within the state. The project site did not appear and has not been documented to provide direct critical habitats for State Listed Endangered species.

Federally Listed Species: No federally listed endangered or threatened species were observed or have been documented to utilize the habitats provided by the project site. A single, federally listed “species of concern” – bald eagle – has been documented to utilize the habitats generally associated with the area lakes, ponds and the Puyallup River Corridor. However, the project site did not provide critical habitats for this species. This species may occasionally overfly the project site.

CRITICAL AREAS DETERMINATION

WETLANDS

Wetland determination was based on observations of hydrophytic vegetation, hydric soils, and wetland hydrology in accordance with the *Corps of Engineers Wetland Delineation Manual* (United States Army Corps of Engineers, 1987) with the *Regional Supplement to the Corps of Engineers Wetland Delineation Manual: Western Mountains, Valleys, and Coast Region* (United States Army Corps of Engineers, 2010). Based on these methods one (1) wetland area was identified to be associated with a topographic swale that dominated the project site.

WETLAND	CLASSIFICATION (USFWS)	CITY OF PUYALLUP CATEGORY	WDOE RATING SCORE	WDOE HABITAT SCORE
A	PFOCd, PEMCd	III	18	5

Wetland A: Wetland A was identified throughout the majority of the project and to extend into adjacent parcels. Wetland A exhibited a mixed forest plant community within the project site. Offsite to the northwest this wetland exhibited an emergent plant community. Seasonal hydrology from the wetland entered a culvert within the Willow Springs apartment complex offsite to the northwest. This hydrology continued through a series of ditch lines, pipes, and culverts then eventually entered a Pierce County Stormwater Infiltration Pond adjacent to 89th Avenue Court East (Figure 8).

Wetland A met the U.S. Fish and Wildlife Service (USFWS) criteria for classification of palustrine, forested, seasonally flooded, ditched (PFOCd); and palustrine, emergent, seasonally flooded, ditched (PEMCd). Wetland A appeared to meet the criteria for designation as a City of Puyallup Category III Wetland and have an associated buffer of 60 feet for a moderate intensity land use. Wetland A achieved a total functions score of 18 points utilizing the Washington State Department of Ecology (WDOE) Wetland Rating Form for Western Washington (Hruby 2014) (Appendix B).

FISH AND WILDLIFE HABITAT AREAS

No areas were identified, or have been documented, with which state or federally designated endangered, threatened, and sensitive species have a primary association. In addition, no lands essential for preserving connections between habitats and open species were identified or previously documented.

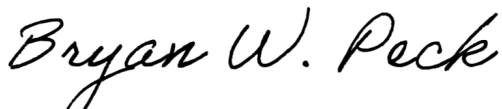
The City of Puyallup Category III Wetland identified within the project site appears to meet the designation as a WDFW “priority habitat” and would be subject to the jurisdiction of the State of Washington.

SELECTED DEVELOPMENT ACTION

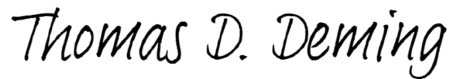
The *Selected Development Action* for the project site focuses on the future development of one duplex homesite within the project site (**Parcel 0419095003**). The development of this duplex would be completed without direct adverse impacts to the identified onsite City of Puyallup Category III Wetland or an encroachment into the associated standard wetland buffer (see Site Plan). A 10-foot building setback would also be established between the outer wetland buffer boundary and the proposed duplex.

STANDARD OF CARE

This document has been completed by Habitat Technologies for use by **Mr. David Artz**. Prior to extensive site planning the findings documented in this document should be reviewed and verified by the City of Puyallup. Habitat Technologies has provided professional services that are in accordance with the degree of care and skill generally accepted in the nature of the work accomplished. No other warranties are expressed or implied. Habitat Technologies is not responsible for design costs incurred before this document is approved by the appropriate resource and permitting agencies.



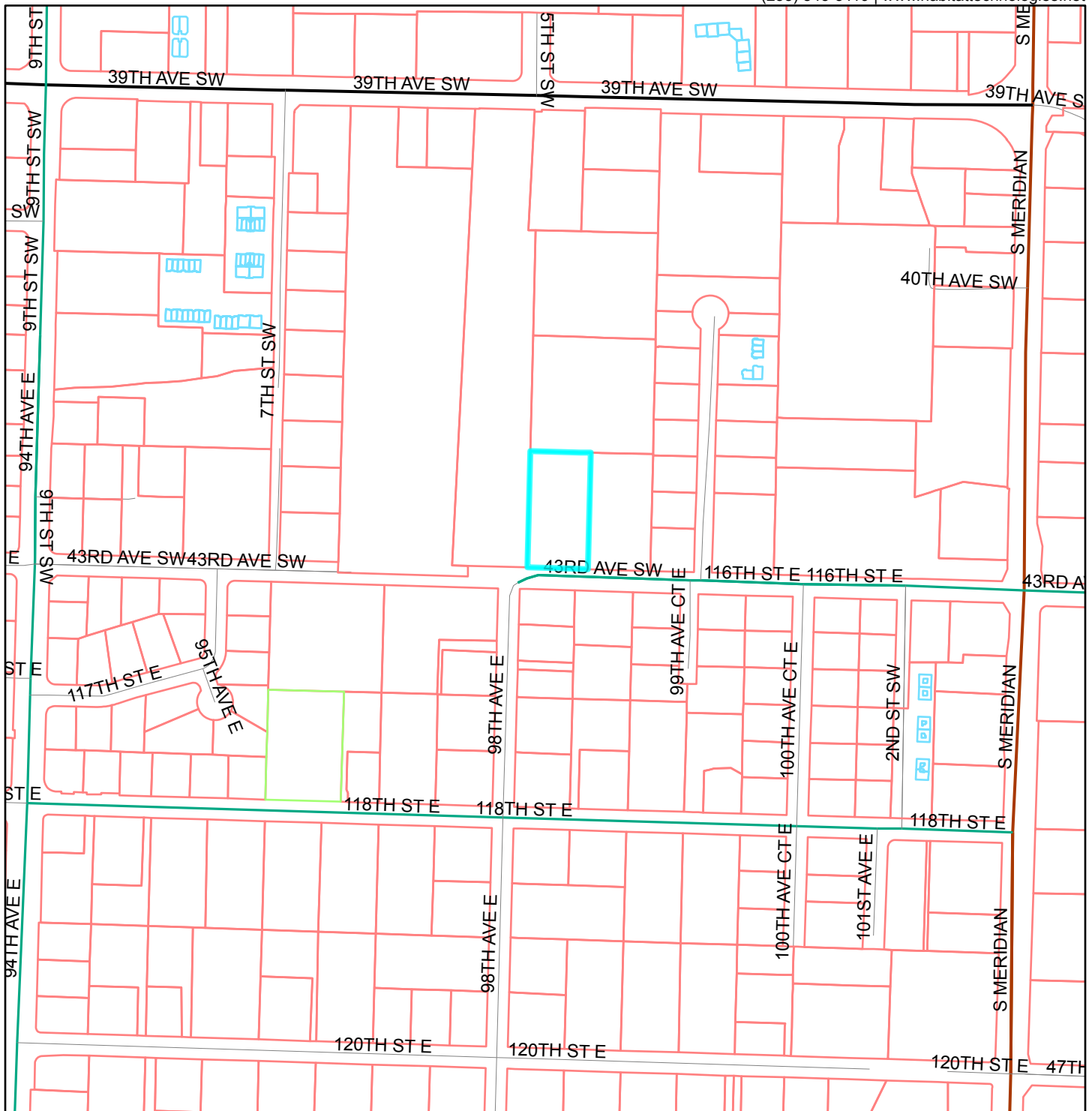
Bryan W. Peck
Wetland Biologist



Thomas D. Deming, SPWS
Habitat Technologies

FIGURES

Figure 1 Site Vicinity



Legend

Tax Parcels

- Base Parcel
- Condominium

- Other

Roads

- Interstate Highway

- Highway Ramp
- Limited Access State Highway
- Other State Highway

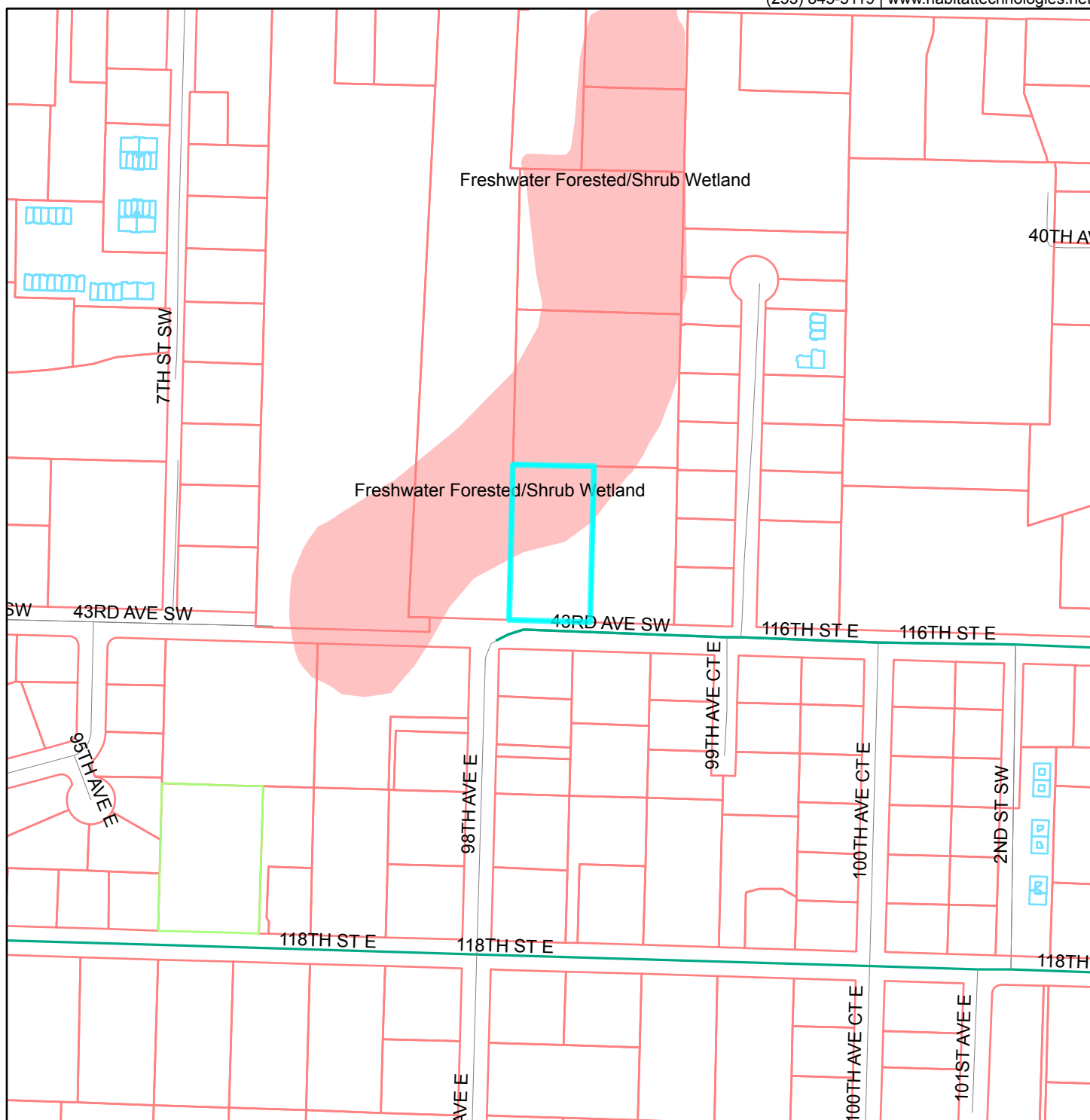
- Major Road
- Arterial
- Residential
- Unknown



1:4,800

0 105 210 420 Feet

Figure 2 NWI Mapping



Legend

Tax Parcels

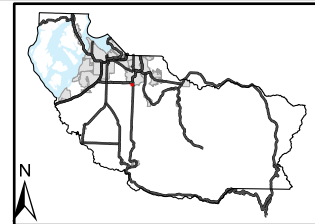
- Base Parcel
- Condominium
- Other

Roads

- Interstate Highway
- Highway Ramp

- Limited Access State Highway
- Other State Highway
- Major Road
- Arterial

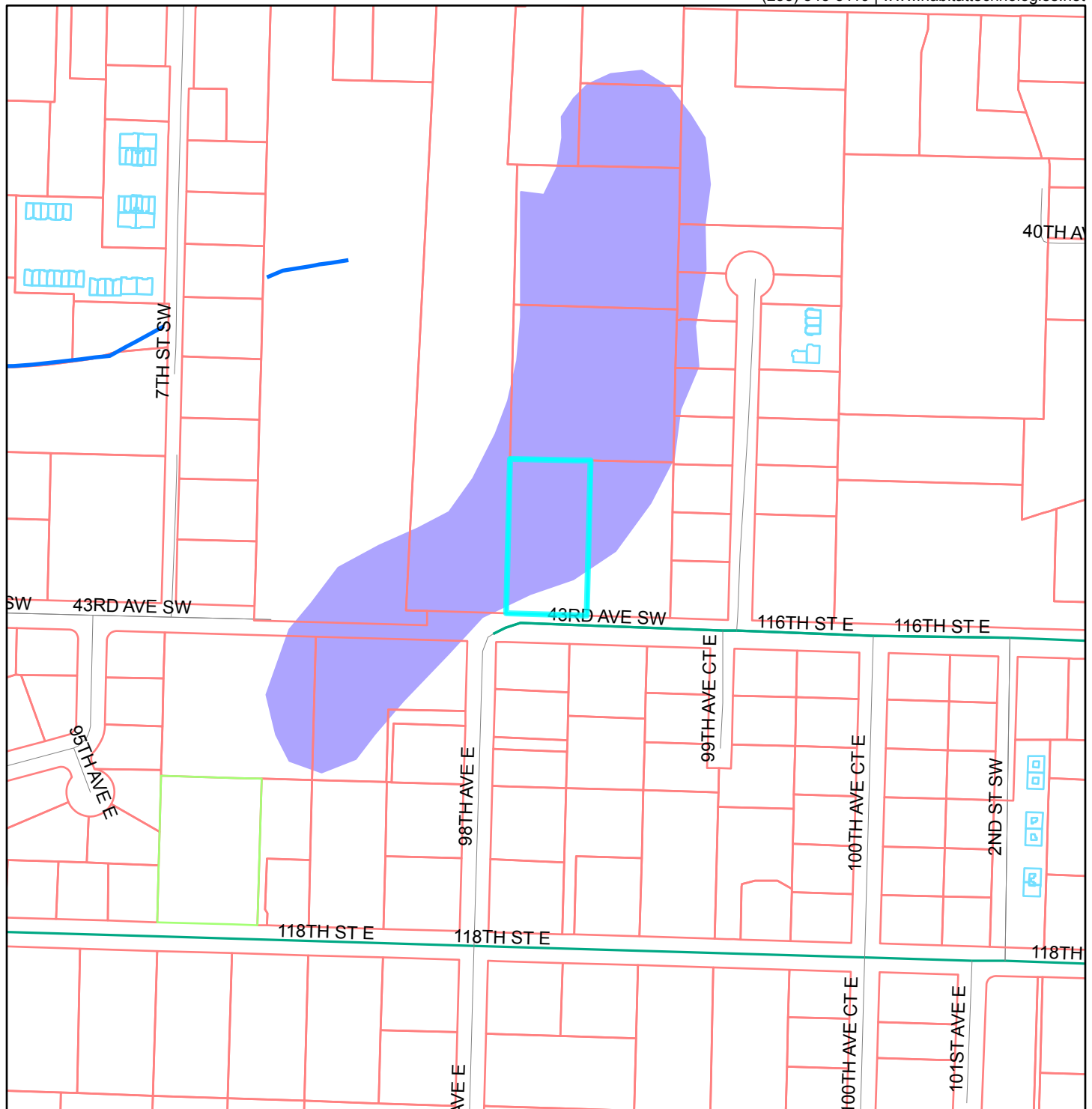
- Residential
- Unknown
- National Wetlands Inventory



1:3,600

0 80 160 320 Feet

Figure 3 PHS Mapping



Legend

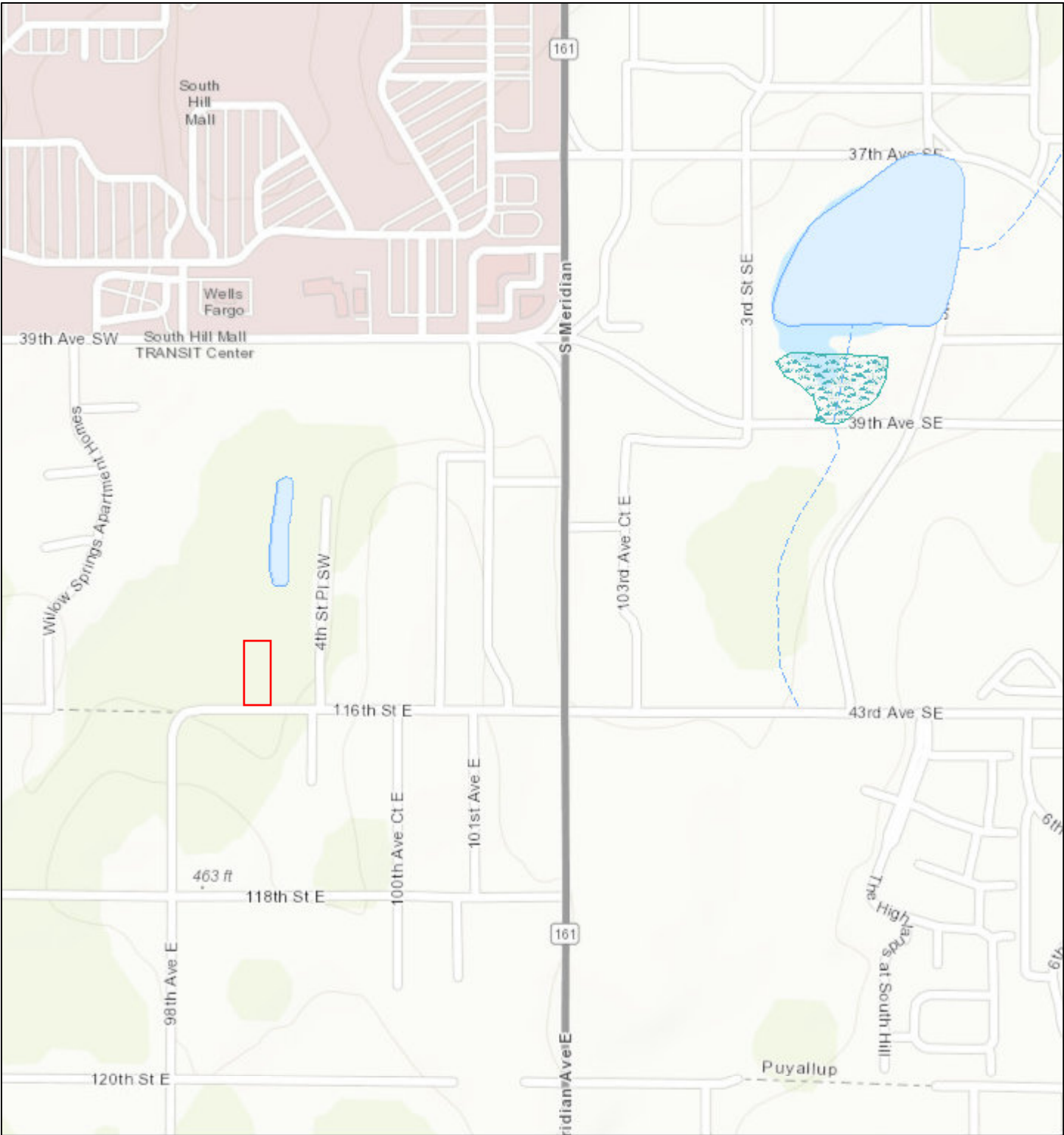
- | | | | |
|--------------------|--------------------|------------------------------|------------------------------|
| Streams - Puyallup | Other | Limited Access State Highway | Residential |
| Tax Parcels | Roads | Other State Highway | Unknown |
| Base Parcel | Interstate Highway | Major Road | Priority Habitat and Species |
| Condominium | Highway Ramp | Arterial | |



1:3,600

0 80 160 320 Feet

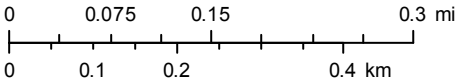
Figure 4 WDFW Salmonscape Mapping



June 4, 2019

1:9,028

— All SalmonScape Species



USGS/NHD
Sources: Esri, HERE, Garmin, Intermap, increment P Corp., GEBCO, USGS, FAO, NPS, NRCAN, GeoBase, IGN, Kadaster NL, Ordnance Survey, Esri Japan, METI, Esri China (Hong Kong), (c) OpenStreetMap contributors, and the GIS User Community

Figure 5 Forest Practice Water Type Map

S10 T19.0N R04.0E, S03 T19.0N R04.0E, S04 T19.0N R04.0E
S09 T19.0N R04.0E

Application #: _____



Date: 6/4/2019 Time: 3:20:46 PM

NAD 83 Scale: 1:4,800

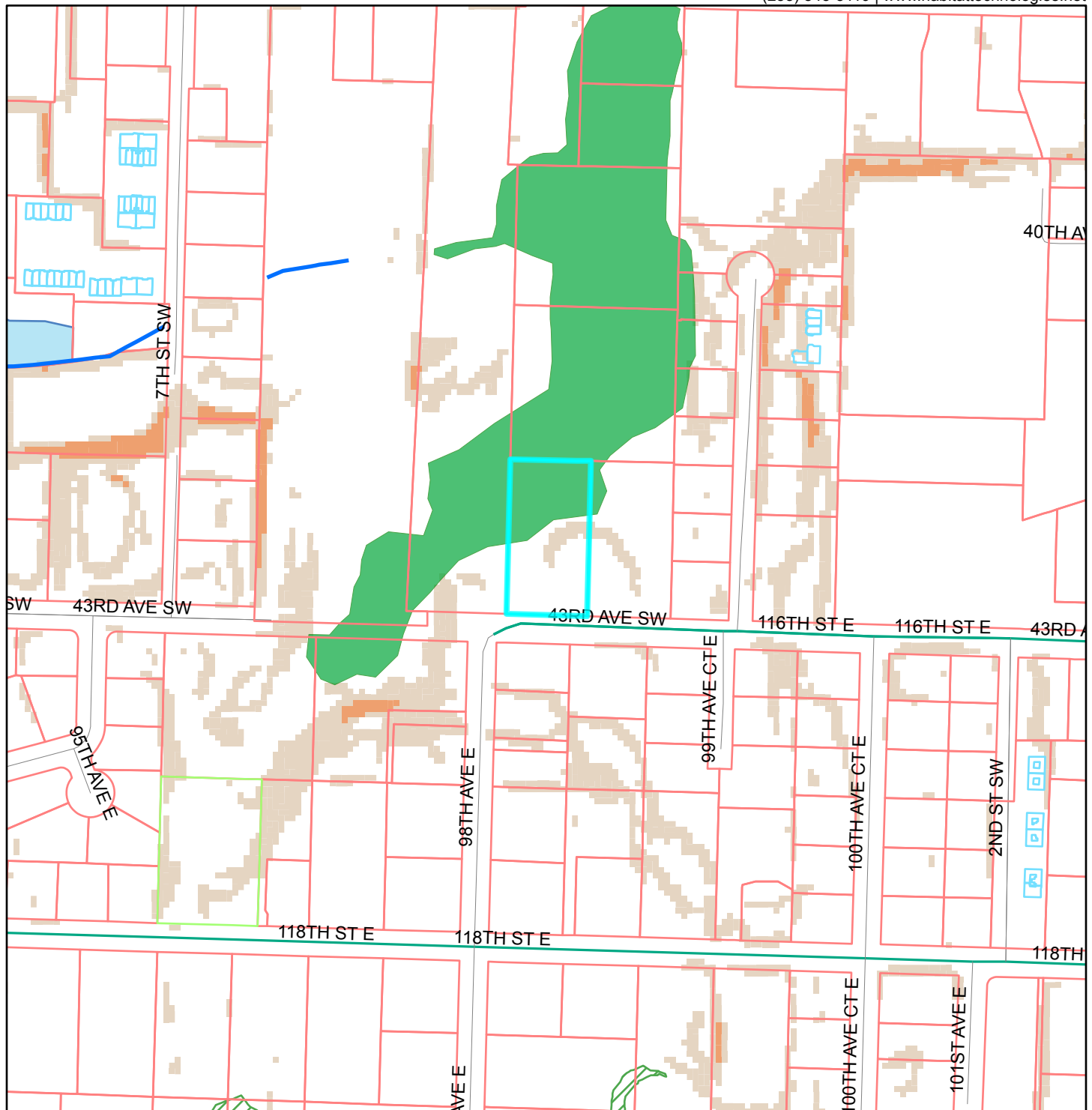
Contour Interval: 40 Feet

Figure 6 City of Puyallup Mapping

Habitat Technologies

P.O.Box 1088
Puyallup, WA 98371

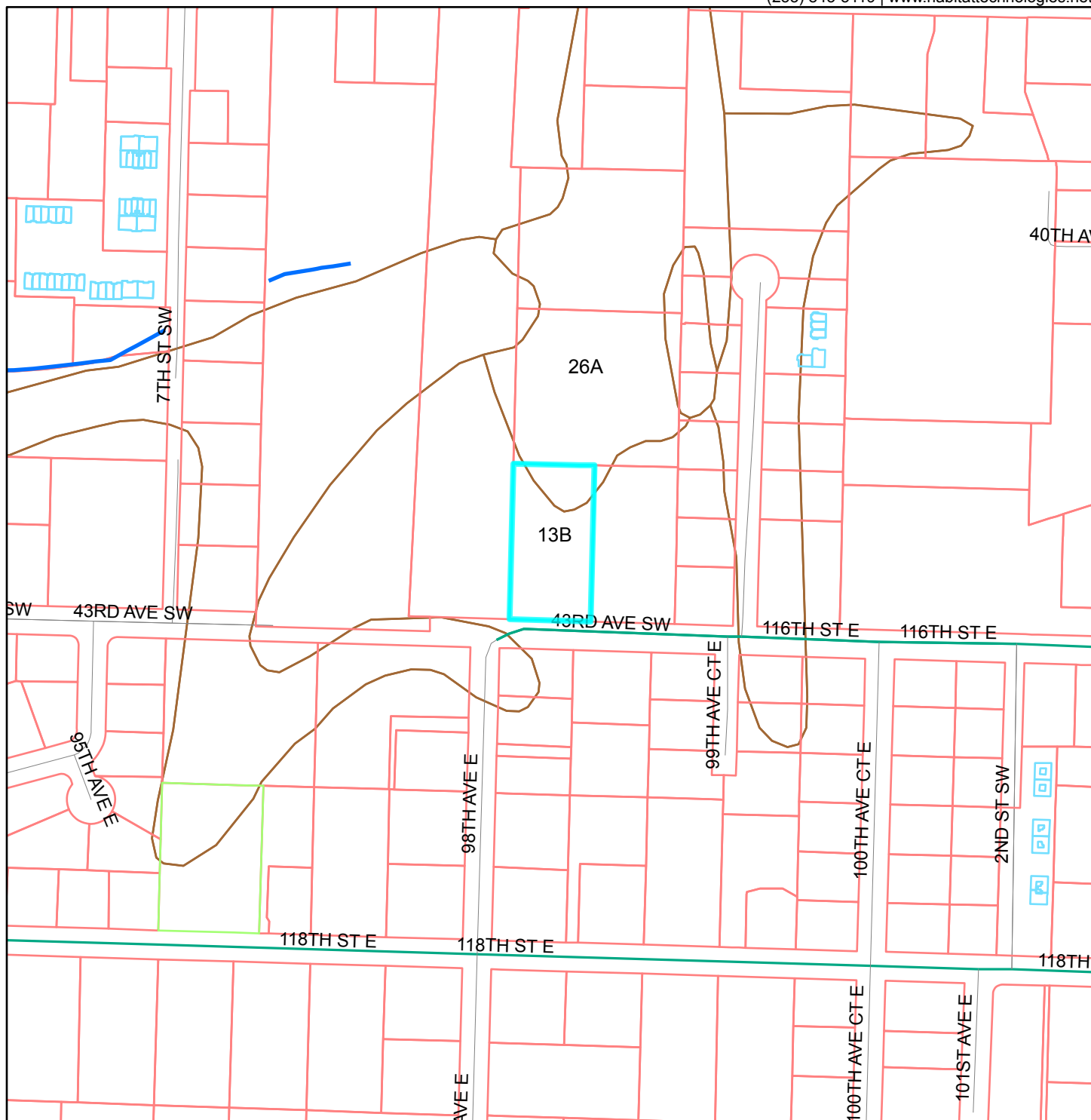
(253) 845-5119 | www.habitattechnologies.net

[illegible]

The map features are approximate and are intended only to provide an indication of said feature. Additional areas that have not been mapped may be present. This is not a survey. Orthophotos and other data may not align. The County assumes no liability for variations ascertained by actual survey. ALL DATA IS EXPRESSLY PROVIDED 'AS IS' AND 'WITH ALL FAULTS'. The County makes no warranty of fitness for a particular purpose.

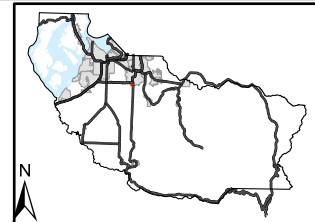
Date: 1/6/2020 01:40 PM

Figure 7 Soils Mapping



Legend

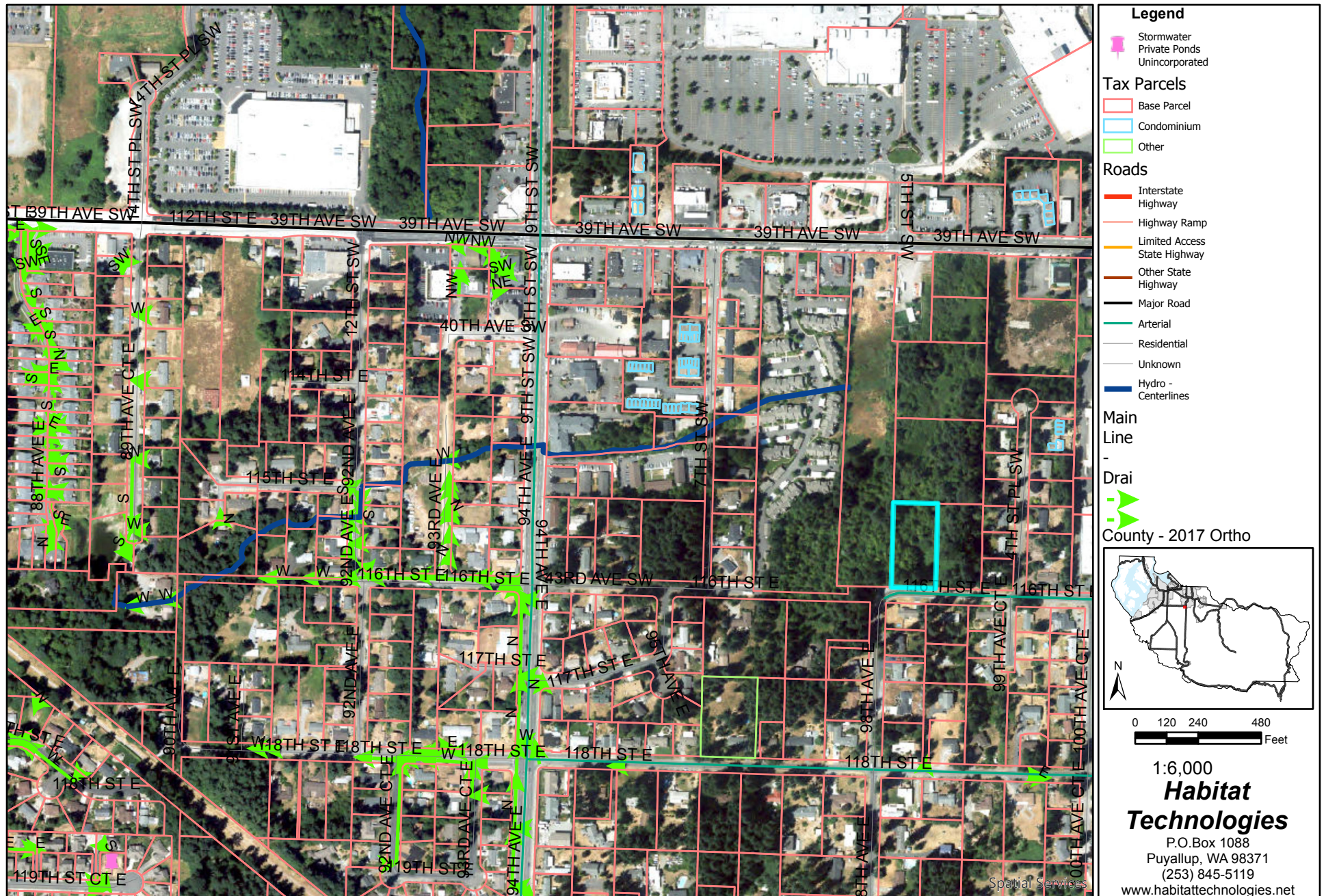
- | | | | |
|--------------------|--------------------|------------------------------|-------------|
| Streams - Puyallup | Other | Limited Access State Highway | Residential |
| Tax Parcels | Roads | Other State Highway | Unknown |
| Base Parcel | Interstate Highway | Major Road | Soils |
| Condominium | Highway Ramp | Arterial | |



1:3,600

0 80 160 320 Feet

Figure 8 Wetland Outlet



The map features are approximate and are intended only to provide an indication of said feature. Additional areas that have not been mapped may be present. This is not a survey. Orthophotos and other data may not align. The County assumes no liability for variations ascertained by actual survey. ALL DATA IS EXPRESSLY PROVIDED 'AS IS' AND 'WITH ALL FAULTS'. The County makes no warranty of fitness for a particular purpose.

Date: 1/28/2020 03:12 PM

REFERENCE AND BACKGROUND LIST

Adamus, P.R., E.J. Clairain Jr., R.D. Smith, and R.E. Young. 1987. Wetland Evaluation Technique (WET); Volume II: Methodology, Operational Draft Technical Report Y-87, U.S. Army Engineer Waterways Experiment Station, Vicksburg, Mississippi.

Cowardin, Lewis M. et al, 1979. Classification of Wetlands and Deepwater Habitats of the United States. Office of Biological Services, U.S. Fish and Wildlife Service, U.S. Department of the Interior, FWS/OBS-79/31.

Hitchcock, C.L., A. Cronquist. 1977. Flora of the Pacific Northwest. University of Washington Press. Seattle, Washington.

Hruby, T. 2008. Washington State Wetland Rating System for Western Washington: 2008 Update. Publication #08-06-029. Olympia, WA: Washington Department of Ecology.

Hruby, T. 2014. Washington State Wetland Rating System for Western Washington: 2014 Update. Publication #14-06-029. Olympia, WA: Washington Department of Ecology.

Lichvar, R.W., D.L. Banks, W.N. Kirchner, and N.C. Melvin. 2016. The National Wetlands Plant List: 2016 wetland ratings. Phytoneuron 2016-30: 1-17. Published 28 April 2016. ISSN 2153 733X. <http://wetland-plants.usace.army.mil/>

Reppert, R.T., W. Sigleo, E. Stakhiv, L. Messman, and C. Meyers. 1979. Wetland Values - Concepts and Methods for Wetland Evaluation. Research Report 79-R1, U.S. Army Corps of Engineers, Institute for Water Resources, Fort Belvoir, Virginia.

United States Army Corps of Engineers, 1987. Wetlands Delineation Manual. Technical Report Y-87-1, US Army Engineer Waterways Experiment Station, Vicksburg, Mississippi. March 1987.

United States Army Corps of Engineers. 2010. Regional Supplement to the Corps of Engineers Wetland Delineation Manual: Western Mountains, Valleys, and Coast Region (Version 2.0), Environmental Laboratory ERDC/EL TR-08-13.

US Climate Data, 2015 <http://www.usclimatedata.com/climate/tacoma/washington/united-states/uswa0441/0441/2014/1>

USDA Natural Resource Conservation Service Plants Database, 2015 (for hydrophytic plant classification): <http://plants.usda.gov/>

United States Department of Agriculture, Natural Resources Conservation Service. Web Soil Survey. 2016 <http://websoilsurvey.nrcs.usda.gov/app/newfeatures.2.3.htm>.

US Fish and Wildlife Service National Wetland Inventory Mapper, 2016 (for NWI wetland mapping): <http://www.fws.gov/wetlands/Data/Mapper.html>.

Washington State Department of Ecology. 1997. Washington State Wetlands Identification and Delineation Manual. Publication Number 96-94.

Washington State Department of Fish and Wildlife Priority Habitats and Species Maps 2016 <http://wdfw.wa.gov/mapping/phs/>

Washington State Department of Fish and Wildlife SalmonScape Mapping System, 2016 (for fish presence): <http://apps.wdfw.wa.gov/salmonscape/map.html>

Washington State Department of Natural Resources FPARS Mapping System, 2016 (for stream typing): <http://fortess.wa.gov/dnr/app1/fpars/viewer.htm>

APPENDIX A – Representative Field Data

WETLAND DETERMINATION DATA FORM – Western Mountains, Valleys, and Coast Region

Project/Site: Artz Parcels City/County: Puyallup / Pierce Sampling Date: 29 AUG 2018
 Applicant/Owner: _____ State: Washington Sampling Point: SP-1
 Investigator(s): Habitat Technologies Section, Township, Range: S09, T19, R04E
 Landform (hillslope, terrace, etc.): _____ Local relief (concave, convex, none): _____ Slope (%): _____
 Subregion (LRR): A Lat: _____ Long: _____ Datum: _____
 Soil Map Unit Name: Everett very gravelly sandy loam NWI classification: _____

Are climatic / hydrologic conditions on the site typical for this time of year? Yes ☒ No ☐ (If no, explain in Remarks.)

Are Vegetation _____, Soil _____, or Hydrology _____ significantly disturbed? Are "Normal Circumstances" present? Yes ☒ No ☐

Are Vegetation _____, Soil _____, or Hydrology _____ naturally problematic? (If needed, explain any answers in Remarks.)

SUMMARY OF FINDINGS – Attach site map showing sampling point locations, transects, important features, etc.

Hydrophytic Vegetation Present? Yes <input checked="" type="checkbox"/> No <input type="checkbox"/> Hydric Soil Present? Yes <input checked="" type="checkbox"/> No <input type="checkbox"/> Wetland Hydrology Present? Yes <input checked="" type="checkbox"/> No <input type="checkbox"/>	Is the Sampled Area within a Wetland? Yes <input checked="" type="checkbox"/> No <input type="checkbox"/>
Remarks: Wetland	

VEGETATION – Use scientific names of plants.

<p><u>Tree Stratum</u> (Plot size: <u>15ft radius</u>)</p> <table style="width: 100%;"> <thead> <tr> <th></th> <th style="text-align: center;">Absolute % Cover</th> <th style="text-align: center;">Dominant Species?</th> <th style="text-align: center;">Indicator Status</th> </tr> </thead> <tbody> <tr> <td>1. <u>Populus trichocarpa</u></td> <td style="text-align: center;">30</td> <td style="text-align: center;">YES</td> <td style="text-align: center;">FAC</td> </tr> <tr> <td>2. <u>Alnus rubra</u></td> <td style="text-align: center;">40</td> <td style="text-align: center;">YES</td> <td style="text-align: center;">FAC</td> </tr> <tr> <td>3. _____</td> <td style="text-align: center;">_____</td> <td style="text-align: center;">_____</td> <td style="text-align: center;">_____</td> </tr> <tr> <td>4. _____</td> <td style="text-align: center;">_____</td> <td style="text-align: center;">_____</td> <td style="text-align: center;">_____</td> </tr> <tr> <td colspan="2" style="text-align: right;">70 = Total Cover</td> <td colspan="2"></td> </tr> </tbody> </table> <p><u>Sapling/Shrub Stratum</u> (Plot size: <u>15ft radius</u>)</p> <table style="width: 100%;"> <thead> <tr> <th></th> <th style="text-align: center;">Absolute % Cover</th> <th style="text-align: center;">Dominant Species?</th> <th style="text-align: center;">Indicator Status</th> </tr> </thead> <tbody> <tr> <td>1. <u>Lonicera involucrata</u></td> <td style="text-align: center;">30</td> <td style="text-align: center;">YES</td> <td style="text-align: center;">FAC</td> </tr> <tr> <td>2. <u>Rubus spectabilis</u></td> <td style="text-align: center;">25</td> <td style="text-align: center;">YES</td> <td style="text-align: center;">FAC</td> </tr> <tr> <td>3. <u>Spiraea douglasii</u></td> <td style="text-align: center;">15</td> <td style="text-align: center;">YES</td> <td style="text-align: center;">FACW</td> </tr> <tr> <td>4. _____</td> <td style="text-align: center;">_____</td> <td style="text-align: center;">_____</td> <td style="text-align: center;">_____</td> </tr> <tr> <td>5. _____</td> <td style="text-align: center;">_____</td> <td style="text-align: center;">_____</td> <td style="text-align: center;">_____</td> </tr> <tr> <td colspan="2" style="text-align: right;">70 = Total Cover</td> <td colspan="2"></td> </tr> </tbody> </table> <p><u>Herb Stratum</u> (Plot size: <u>15ft radius</u>)</p> <table style="width: 100%;"> <thead> <tr> <th></th> <th style="text-align: center;">Absolute % Cover</th> <th style="text-align: center;">Dominant Species?</th> <th style="text-align: center;">Indicator Status</th> </tr> </thead> <tbody> <tr> <td>1. <u>Carex obnupta</u></td> <td style="text-align: center;">90</td> <td style="text-align: center;">YES</td> <td style="text-align: center;">OBL</td> </tr> <tr> <td>2. _____</td> <td style="text-align: center;">_____</td> <td style="text-align: center;">_____</td> <td style="text-align: center;">_____</td> </tr> <tr> <td>3. _____</td> <td style="text-align: center;">_____</td> <td style="text-align: center;">_____</td> <td style="text-align: center;">_____</td> </tr> <tr> <td>4. _____</td> <td style="text-align: center;">_____</td> <td style="text-align: center;">_____</td> <td style="text-align: center;">_____</td> </tr> <tr> <td>5. _____</td> <td style="text-align: center;">_____</td> <td style="text-align: center;">_____</td> <td style="text-align: center;">_____</td> </tr> <tr> <td>6. _____</td> <td style="text-align: center;">_____</td> <td style="text-align: center;">_____</td> <td style="text-align: center;">_____</td> </tr> <tr> <td>7. _____</td> <td style="text-align: center;">_____</td> <td style="text-align: center;">_____</td> <td style="text-align: center;">_____</td> </tr> <tr> <td>8. _____</td> <td style="text-align: center;">_____</td> <td style="text-align: center;">_____</td> <td style="text-align: center;">_____</td> </tr> <tr> <td>9. _____</td> <td style="text-align: center;">_____</td> <td style="text-align: center;">_____</td> <td style="text-align: center;">_____</td> </tr> <tr> <td>10. _____</td> <td style="text-align: center;">_____</td> <td style="text-align: center;">_____</td> <td style="text-align: center;">_____</td> </tr> <tr> <td>11. _____</td> <td style="text-align: center;">_____</td> <td style="text-align: center;">_____</td> <td style="text-align: center;">_____</td> </tr> <tr> <td colspan="2" style="text-align: right;">90 = Total Cover</td> <td colspan="2"></td> </tr> </tbody> </table> <p><u>Woody Vine Stratum</u> (Plot size: <u>15ft radius</u>)</p> <table style="width: 100%;"> <thead> <tr> <th></th> <th style="text-align: center;">Absolute % Cover</th> <th style="text-align: center;">Dominant Species?</th> <th style="text-align: center;">Indicator Status</th> </tr> </thead> <tbody> <tr> <td>1. _____</td> <td style="text-align: center;">_____</td> <td style="text-align: center;">_____</td> <td style="text-align: center;">_____</td> </tr> <tr> <td>2. _____</td> <td style="text-align: center;">_____</td> <td style="text-align: center;">_____</td> <td style="text-align: center;">_____</td> </tr> <tr> <td colspan="2" style="text-align: right;">0 = Total Cover</td> <td colspan="2"></td> </tr> </tbody> </table> <p>% Bare Ground in Herb Stratum <u>0</u></p>		Absolute % Cover	Dominant Species?	Indicator Status	1. <u>Populus trichocarpa</u>	30	YES	FAC	2. <u>Alnus rubra</u>	40	YES	FAC	3. _____	_____	_____	_____	4. _____	_____	_____	_____	70 = Total Cover					Absolute % Cover	Dominant Species?	Indicator Status	1. <u>Lonicera involucrata</u>	30	YES	FAC	2. <u>Rubus spectabilis</u>	25	YES	FAC	3. <u>Spiraea douglasii</u>	15	YES	FACW	4. _____	_____	_____	_____	5. _____	_____	_____	_____	70 = Total Cover					Absolute % Cover	Dominant Species?	Indicator Status	1. <u>Carex obnupta</u>	90	YES	OBL	2. _____	_____	_____	_____	3. _____	_____	_____	_____	4. _____	_____	_____	_____	5. _____	_____	_____	_____	6. _____	_____	_____	_____	7. _____	_____	_____	_____	8. _____	_____	_____	_____	9. _____	_____	_____	_____	10. _____	_____	_____	_____	11. _____	_____	_____	_____	90 = Total Cover					Absolute % Cover	Dominant Species?	Indicator Status	1. _____	_____	_____	_____	2. _____	_____	_____	_____	0 = Total Cover				<p>Dominance Test worksheet:</p> <p>Number of Dominant Species That Are OBL, FACW, or FAC: <u>6</u> (A)</p> <p>Total Number of Dominant Species Across All Strata: <u>6</u> (B)</p> <p>Percent of Dominant Species That Are OBL, FACW, or FAC: <u>100</u> (A/B)</p> <p>Prevalence Index worksheet:</p> <table style="width: 100%;"> <thead> <tr> <th style="text-align: left;">Total % Cover of:</th> <th style="text-align: left;">Multiply by:</th> </tr> </thead> <tbody> <tr> <td>OBL species _____</td> <td>x 1 = _____</td> </tr> <tr> <td>FACW species _____</td> <td>x 2 = _____</td> </tr> <tr> <td>FAC species _____</td> <td>x 3 = _____</td> </tr> <tr> <td>FACU species _____</td> <td>x 4 = _____</td> </tr> <tr> <td>UPL species _____</td> <td>x 5 = _____</td> </tr> <tr> <td>Column Totals: _____</td> <td>(A) _____ (B) _____</td> </tr> </tbody> </table> <p style="text-align: center;">Prevalence Index = B/A = _____</p> <p>Hydrophytic Vegetation Indicators:</p> <p><input type="checkbox"/> Rapid Test for Hydrophytic Vegetation</p> <p><input checked="" type="checkbox"/> Dominance Test is >50%</p> <p><input type="checkbox"/> Prevalence Index is ≤3.0¹</p> <p><input type="checkbox"/> Morphological Adaptations¹ (Provide supporting data in Remarks or on a separate sheet)</p> <p><input type="checkbox"/> Wetland Non-Vascular Plants¹</p> <p><input type="checkbox"/> Problematic Hydrophytic Vegetation¹ (Explain)</p> <p>¹Indicators of hydric soil and wetland hydrology must be present, unless disturbed or problematic.</p> <p>Hydrophytic Vegetation Present? Yes <input checked="" type="checkbox"/> No <input type="checkbox"/></p>	Total % Cover of:	Multiply by:	OBL species _____	x 1 = _____	FACW species _____	x 2 = _____	FAC species _____	x 3 = _____	FACU species _____	x 4 = _____	UPL species _____	x 5 = _____	Column Totals: _____	(A) _____ (B) _____
	Absolute % Cover	Dominant Species?	Indicator Status																																																																																																																																				
1. <u>Populus trichocarpa</u>	30	YES	FAC																																																																																																																																				
2. <u>Alnus rubra</u>	40	YES	FAC																																																																																																																																				
3. _____	_____	_____	_____																																																																																																																																				
4. _____	_____	_____	_____																																																																																																																																				
70 = Total Cover																																																																																																																																							
	Absolute % Cover	Dominant Species?	Indicator Status																																																																																																																																				
1. <u>Lonicera involucrata</u>	30	YES	FAC																																																																																																																																				
2. <u>Rubus spectabilis</u>	25	YES	FAC																																																																																																																																				
3. <u>Spiraea douglasii</u>	15	YES	FACW																																																																																																																																				
4. _____	_____	_____	_____																																																																																																																																				
5. _____	_____	_____	_____																																																																																																																																				
70 = Total Cover																																																																																																																																							
	Absolute % Cover	Dominant Species?	Indicator Status																																																																																																																																				
1. <u>Carex obnupta</u>	90	YES	OBL																																																																																																																																				
2. _____	_____	_____	_____																																																																																																																																				
3. _____	_____	_____	_____																																																																																																																																				
4. _____	_____	_____	_____																																																																																																																																				
5. _____	_____	_____	_____																																																																																																																																				
6. _____	_____	_____	_____																																																																																																																																				
7. _____	_____	_____	_____																																																																																																																																				
8. _____	_____	_____	_____																																																																																																																																				
9. _____	_____	_____	_____																																																																																																																																				
10. _____	_____	_____	_____																																																																																																																																				
11. _____	_____	_____	_____																																																																																																																																				
90 = Total Cover																																																																																																																																							
	Absolute % Cover	Dominant Species?	Indicator Status																																																																																																																																				
1. _____	_____	_____	_____																																																																																																																																				
2. _____	_____	_____	_____																																																																																																																																				
0 = Total Cover																																																																																																																																							
Total % Cover of:	Multiply by:																																																																																																																																						
OBL species _____	x 1 = _____																																																																																																																																						
FACW species _____	x 2 = _____																																																																																																																																						
FAC species _____	x 3 = _____																																																																																																																																						
FACU species _____	x 4 = _____																																																																																																																																						
UPL species _____	x 5 = _____																																																																																																																																						
Column Totals: _____	(A) _____ (B) _____																																																																																																																																						
Remarks:																																																																																																																																							

SOIL

Sampling Point: SP-1

Profile Description: (Describe to the depth needed to document the indicator or confirm the absence of indicators.)

Depth (inches)	Matrix		Redox Features			Loc ²	Texture	Remarks
	Color (moist)	%	Color (moist)	%	Type ¹			
0-18	10YR 3/1	100					L	

¹Type: C=Concentration, D=Depletion, RM=Reduced Matrix, CS=Covered or Coated Sand Grains.

²Location: PL=Pore Lining, M=Matrix.

Hydric Soil Indicators: (Applicable to all LRRs, unless otherwise noted.)

- | | |
|--|--|
| <input type="checkbox"/> Histosol (A1) | <input type="checkbox"/> Sandy Redox (S5) |
| <input type="checkbox"/> Histic Epipedon (A2) | <input type="checkbox"/> Stripped Matrix (S6) |
| <input type="checkbox"/> Black Histic (A3) | <input type="checkbox"/> Loamy Mucky Mineral (F1) (except MLRA 1) |
| <input type="checkbox"/> Hydrogen Sulfide (A4) | <input type="checkbox"/> Loamy Gleyed Matrix (F2) |
| <input type="checkbox"/> Depleted Below Dark Surface (A11) | <input type="checkbox"/> Depleted Matrix (F3) |
| <input checked="" type="checkbox"/> Thick Dark Surface (A12) | <input type="checkbox"/> Redox Dark Surface (F6) |
| <input type="checkbox"/> Sandy Mucky Mineral (S1) | <input type="checkbox"/> Depleted Dark Surface (F7) |
| <input type="checkbox"/> Sandy Gleyed Matrix (S4) | <input type="checkbox"/> Redox Depressions (F8) |

Indicators for Problematic Hydric Soils³:

- ☐ 2 cm Muck (A10)
- ☐ Red Parent Material (TF2)
- ☐ Very Shallow Dark Surface (TF12)
- ☐ Other (Explain in Remarks)

³Indicators of hydrophytic vegetation and wetland hydrology must be present, unless disturbed or problematic.

Restrictive Layer (if present):

Type: _____

Depth (inches): _____

Hydric Soil Present? Yes ☒ No ☐

Remarks:

HYDROLOGY

Wetland Hydrology Indicators:

Primary Indicators (minimum of one required; check all that apply)

- | | |
|---|---|
| <input type="checkbox"/> Surface Water (A1) | <input checked="" type="checkbox"/> Water-Stained Leaves (B9) (except MLRA 1, 2, 4A, and 4B) |
| <input type="checkbox"/> High Water Table (A2) | <input type="checkbox"/> Salt Crust (B11) |
| <input checked="" type="checkbox"/> Saturation (A3) | <input type="checkbox"/> Aquatic Invertebrates (B13) |
| <input checked="" type="checkbox"/> Water Marks (B1) | <input type="checkbox"/> Hydrogen Sulfide Odor (C1) |
| <input type="checkbox"/> Sediment Deposits (B2) | <input type="checkbox"/> Oxidized Rhizospheres along Living Roots (C3) |
| <input type="checkbox"/> Drift Deposits (B3) | <input type="checkbox"/> Presence of Reduced Iron (C4) |
| <input type="checkbox"/> Algal Mat or Crust (B4) | <input type="checkbox"/> Recent Iron Reduction in Tilled Soils (C6) |
| <input type="checkbox"/> Iron Deposits (B5) | <input type="checkbox"/> Stunted or Stressed Plants (D1) (LRR A) |
| <input checked="" type="checkbox"/> Surface Soil Cracks (B6) | <input type="checkbox"/> Other (Explain in Remarks) |
| <input type="checkbox"/> Inundation Visible on Aerial Imagery (B7) | |
| <input checked="" type="checkbox"/> Sparsely Vegetated Concave Surface (B8) | |

Secondary Indicators (2 or more required)

- ☒ Water-Stained Leaves (B9) (**MLRA 1, 2, 4A, and 4B**)
- ☐ Drainage Patterns (B10)
- ☐ Dry-Season Water Table (C2)
- ☐ Saturation Visible on Aerial Imagery (C9)
- ☐ Geomorphic Position (D2)
- ☐ Shallow Aquitard (D3)
- ☐ FAC-Neutral Test (D5)
- ☐ Raised Ant Mounds (D6) (**LRR A**)
- ☐ Frost-Heave Hummocks (D7)

Field Observations:

Surface Water Present? Yes ☐ No ☒ Depth (inches): _____

Water Table Present? Yes ☐ No ☒ Depth (inches): _____

Saturation Present? Yes ☒ No ☐ Depth (inches): 0
(includes capillary fringe)

Wetland Hydrology Present? Yes ☒ No ☐

Describe Recorded Data (stream gauge, monitoring well, aerial photos, previous inspections), if available:

Remarks:

WETLAND DETERMINATION DATA FORM – Western Mountains, Valleys, and Coast Region

Project/Site: Artz Parcels City/County: Puyallup / Pierce Sampling Date: 29 AUG 2018
 Applicant/Owner: _____ State: Washington Sampling Point: SP-2
 Investigator(s): Habitat Technologies Section, Township, Range: S09, T19, R04E
 Landform (hillslope, terrace, etc.): _____ Local relief (concave, convex, none): _____ Slope (%): _____
 Subregion (LRR): A Lat: _____ Long: _____ Datum: _____
 Soil Map Unit Name: Everett very gravelly sandy loam NWI classification: _____

Are climatic / hydrologic conditions on the site typical for this time of year? Yes ☒ No ☐ (If no, explain in Remarks.)

Are Vegetation _____, Soil _____, or Hydrology _____ significantly disturbed? Are "Normal Circumstances" present? Yes ☒ No ☐

Are Vegetation _____, Soil _____, or Hydrology _____ naturally problematic? (If needed, explain any answers in Remarks.)

SUMMARY OF FINDINGS – Attach site map showing sampling point locations, transects, important features, etc.

Hydrophytic Vegetation Present? Yes <input type="checkbox"/> No <input checked="" type="checkbox"/>	Is the Sampled Area within a Wetland? Yes <input type="checkbox"/> No <input checked="" type="checkbox"/>
Hydric Soil Present? Yes <input type="checkbox"/> No <input checked="" type="checkbox"/>	
Wetland Hydrology Present? Yes <input type="checkbox"/> No <input checked="" type="checkbox"/>	
Remarks: Upland	

VEGETATION – Use scientific names of plants.

Tree Stratum (Plot size: 15ft radius)	Absolute % Cover	Dominant Species?	Indicator Status	Dominance Test worksheet: Number of Dominant Species That Are OBL, FACW, or FAC: <u>2</u> (A) Total Number of Dominant Species Across All Strata: <u>6</u> (B) Percent of Dominant Species That Are OBL, FACW, or FAC: <u>33</u> (A/B)
1. <u>Pseudotsuga menziesii</u>	<u>40</u>	<u>YES</u>	<u>FACU</u>	
2. <u>Alnus rubra</u>	<u>20</u>	<u>YES</u>	<u>FAC</u>	
3. _____	_____	_____	_____	
4. _____	_____	_____	_____	
<u>60</u> = Total Cover				
Sapling/Shrub Stratum (Plot size: 15ft radius)				
1. <u>Alnus rubra</u>	<u>40</u>	<u>YES</u>	<u>FACU</u>	Prevalence Index worksheet: Total % Cover of: _____ Multiply by: OBL species _____ x 1 = _____ FACW species _____ x 2 = _____ FAC species _____ x 3 = _____ FACU species _____ x 4 = _____ UPL species _____ x 5 = _____ Column Totals: _____ (A) _____ (B) Prevalence Index = B/A = _____
2. <u>Gaultheria shallon</u>	<u>10</u>	<u>YES</u>	<u>FACU</u>	
3. <u>Rubus spectabilis</u>	<u>30</u>	<u>YES</u>	<u>FAC</u>	
4. _____	_____	_____	_____	
5. _____	_____	_____	_____	
<u>80</u> = Total Cover				
Herb Stratum (Plot size: 15ft radius)				
1. <u>Polystichum munitum</u>	<u>30</u>	<u>YES</u>	<u>FACU</u>	Hydrophytic Vegetation Indicators: <input type="checkbox"/> Rapid Test for Hydrophytic Vegetation <input type="checkbox"/> Dominance Test is >50% <input type="checkbox"/> Prevalence Index is ≤3.0 ¹ <input type="checkbox"/> Morphological Adaptations ¹ (Provide supporting data in Remarks or on a separate sheet) <input type="checkbox"/> Wetland Non-Vascular Plants ¹ <input type="checkbox"/> Problematic Hydrophytic Vegetation ¹ (Explain) ¹ Indicators of hydric soil and wetland hydrology must be present, unless disturbed or problematic.
2. _____	_____	_____	_____	
3. _____	_____	_____	_____	
4. _____	_____	_____	_____	
5. _____	_____	_____	_____	
6. _____	_____	_____	_____	
7. _____	_____	_____	_____	
8. _____	_____	_____	_____	
9. _____	_____	_____	_____	
10. _____	_____	_____	_____	
11. _____	_____	_____	_____	
<u>30</u> = Total Cover				
Woody Vine Stratum (Plot size: 15ft radius)				
1. _____	_____	_____	_____	Hydrophytic Vegetation Present? Yes <input type="checkbox"/> No <input checked="" type="checkbox"/>
2. _____	_____	_____	_____	
<u>0</u> = Total Cover				
% Bare Ground in Herb Stratum <u>0</u>				
Remarks:				

SOIL

Sampling Point: SP-2

Profile Description: (Describe to the depth needed to document the indicator or confirm the absence of indicators.)

Depth (inches)	Matrix		Redox Features			Loc ²	Texture	Remarks
	Color (moist)	%	Color (moist)	%	Type ¹			
0-10	10YR 3/2	100					GSL	
10-18	10YR-4/3	100					GSL	

¹Type: C=Concentration, D=Depletion, RM=Reduced Matrix, CS=Covered or Coated Sand Grains.

²Location: PL=Pore Lining, M=Matrix.

Hydric Soil Indicators: (Applicable to all LRRs, unless otherwise noted.)

- | | |
|--|--|
| <input type="checkbox"/> Histosol (A1) | <input type="checkbox"/> Sandy Redox (S5) |
| <input type="checkbox"/> Histic Epipedon (A2) | <input type="checkbox"/> Stripped Matrix (S6) |
| <input type="checkbox"/> Black Histic (A3) | <input type="checkbox"/> Loamy Mucky Mineral (F1) (except MLRA 1) |
| <input type="checkbox"/> Hydrogen Sulfide (A4) | <input type="checkbox"/> Loamy Gleyed Matrix (F2) |
| <input type="checkbox"/> Depleted Below Dark Surface (A11) | <input type="checkbox"/> Depleted Matrix (F3) |
| <input type="checkbox"/> Thick Dark Surface (A12) | <input type="checkbox"/> Redox Dark Surface (F6) |
| <input type="checkbox"/> Sandy Mucky Mineral (S1) | <input type="checkbox"/> Depleted Dark Surface (F7) |
| <input type="checkbox"/> Sandy Gleyed Matrix (S4) | <input type="checkbox"/> Redox Depressions (F8) |

Indicators for Problematic Hydric Soils³:

- ☐ 2 cm Muck (A10)
- ☐ Red Parent Material (TF2)
- ☐ Very Shallow Dark Surface (TF12)
- ☐ Other (Explain in Remarks)

³Indicators of hydrophytic vegetation and wetland hydrology must be present, unless disturbed or problematic.

Restrictive Layer (if present):

Type: _____

Depth (inches): _____

Hydric Soil Present? Yes ☐ No ☒

Remarks:

HYDROLOGY

Wetland Hydrology Indicators:

Primary Indicators (minimum of one required; check all that apply)

- | | |
|--|--|
| <input type="checkbox"/> Surface Water (A1) | <input type="checkbox"/> Water-Stained Leaves (B9) (except MLRA 1, 2, 4A, and 4B) |
| <input type="checkbox"/> High Water Table (A2) | <input type="checkbox"/> Salt Crust (B11) |
| <input type="checkbox"/> Saturation (A3) | <input type="checkbox"/> Aquatic Invertebrates (B13) |
| <input type="checkbox"/> Water Marks (B1) | <input type="checkbox"/> Hydrogen Sulfide Odor (C1) |
| <input type="checkbox"/> Sediment Deposits (B2) | <input type="checkbox"/> Oxidized Rhizospheres along Living Roots (C3) |
| <input type="checkbox"/> Drift Deposits (B3) | <input type="checkbox"/> Presence of Reduced Iron (C4) |
| <input type="checkbox"/> Algal Mat or Crust (B4) | <input type="checkbox"/> Recent Iron Reduction in Tilled Soils (C6) |
| <input type="checkbox"/> Iron Deposits (B5) | <input type="checkbox"/> Stunted or Stressed Plants (D1) (LRR A) |
| <input type="checkbox"/> Surface Soil Cracks (B6) | <input type="checkbox"/> Other (Explain in Remarks) |
| <input type="checkbox"/> Inundation Visible on Aerial Imagery (B7) | |
| <input type="checkbox"/> Sparsely Vegetated Concave Surface (B8) | |

Secondary Indicators (2 or more required)

- ☒ Water-Stained Leaves (B9) (**MLRA 1, 2, 4A, and 4B**)
- ☐ Drainage Patterns (B10)
- ☐ Dry-Season Water Table (C2)
- ☐ Saturation Visible on Aerial Imagery (C9)
- ☐ Geomorphic Position (D2)
- ☐ Shallow Aquitard (D3)
- ☐ FAC-Neutral Test (D5)
- ☐ Raised Ant Mounds (D6) (**LRR A**)
- ☐ Frost-Heave Hummocks (D7)

Field Observations:

Surface Water Present? Yes ☐ No ☒ Depth (inches): _____

Water Table Present? Yes ☐ No ☒ Depth (inches): _____

Saturation Present? Yes ☐ No ☒ Depth (inches): _____
(includes capillary fringe)

Wetland Hydrology Present? Yes ☐ No ☒

Describe Recorded Data (stream gauge, monitoring well, aerial photos, previous inspections), if available:

Remarks:

WETLAND DETERMINATION DATA FORM – Western Mountains, Valleys, and Coast Region

Project/Site: Artz Parcels City/County: Puyallup / Pierce Sampling Date: 29 AUG 2018
 Applicant/Owner: _____ State: Washington Sampling Point: SP-3
 Investigator(s): Habitat Technologies Section, Township, Range: S09, T19, R04E
 Landform (hillslope, terrace, etc.): _____ Local relief (concave, convex, none): _____ Slope (%): _____
 Subregion (LRR): A Lat: _____ Long: _____ Datum: _____
 Soil Map Unit Name: Everett very gravelly sandy loam NWI classification: _____

Are climatic / hydrologic conditions on the site typical for this time of year? Yes ☒ No ☐ (If no, explain in Remarks.)

Are Vegetation _____, Soil _____, or Hydrology _____ significantly disturbed? Are "Normal Circumstances" present? Yes ☒ No ☐

Are Vegetation _____, Soil _____, or Hydrology _____ naturally problematic? (If needed, explain any answers in Remarks.)

SUMMARY OF FINDINGS – Attach site map showing sampling point locations, transects, important features, etc.

Hydrophytic Vegetation Present? Yes <input type="checkbox"/> No <input checked="" type="checkbox"/>	Is the Sampled Area within a Wetland? Yes <input type="checkbox"/> No <input checked="" type="checkbox"/>
Hydric Soil Present? Yes <input type="checkbox"/> No <input checked="" type="checkbox"/>	
Wetland Hydrology Present? Yes <input type="checkbox"/> No <input checked="" type="checkbox"/>	
Remarks: Upland	

VEGETATION – Use scientific names of plants.

Tree Stratum (Plot size: 15ft radius)	Absolute % Cover	Dominant Species?	Indicator Status	Dominance Test worksheet: Number of Dominant Species That Are OBL, FACW, or FAC: <u>1</u> (A) Total Number of Dominant Species Across All Strata: <u>6</u> (B) Percent of Dominant Species That Are OBL, FACW, or FAC: <u>17</u> (A/B)
1. <u>Pseudotsuga menziesii</u>	<u>60</u>	<u>YES</u>	<u>FACU</u>	
2. _____	_____	_____	_____	
3. _____	_____	_____	_____	
4. _____	_____	_____	_____	
<u>60</u> = Total Cover				
Sapling/Shrub Stratum (Plot size: 15ft radius)				
1. <u>Acer circinatum</u>	<u>30</u>	<u>YES</u>	<u>FAC</u>	Prevalence Index worksheet: Total % Cover of: _____ Multiply by: OBL species _____ x 1 = _____ FACW species _____ x 2 = _____ FAC species _____ x 3 = _____ FACU species _____ x 4 = _____ UPL species _____ x 5 = _____ Column Totals: _____ (A) _____ (B) Prevalence Index = B/A = _____
2. <u>Corylus cornuta</u>	<u>30</u>	<u>YES</u>	<u>FACU</u>	
3. <u>Cornus stolonifera</u>	<u>30</u>	<u>YES</u>	<u>FACU</u>	
4. <u>Kalmia latifolia</u>	<u>10</u>	<u>YES</u>	<u>FACU</u>	
5. _____	_____	_____	_____	
<u>100</u> = Total Cover				
Herb Stratum (Plot size: 15ft radius)				
1. <u>Hedera Helix</u>	<u>75</u>	<u>YES</u>	<u>FACU</u>	Hydrophytic Vegetation Indicators: <input type="checkbox"/> Rapid Test for Hydrophytic Vegetation <input type="checkbox"/> Dominance Test is >50% <input type="checkbox"/> Prevalence Index is ≤3.0 ¹ <input type="checkbox"/> Morphological Adaptations ¹ (Provide supporting data in Remarks or on a separate sheet) <input type="checkbox"/> Wetland Non-Vascular Plants ¹ <input type="checkbox"/> Problematic Hydrophytic Vegetation ¹ (Explain) ¹ Indicators of hydric soil and wetland hydrology must be present, unless disturbed or problematic.
2. _____	_____	_____	_____	
3. _____	_____	_____	_____	
4. _____	_____	_____	_____	
5. _____	_____	_____	_____	
6. _____	_____	_____	_____	
7. _____	_____	_____	_____	
8. _____	_____	_____	_____	
9. _____	_____	_____	_____	
10. _____	_____	_____	_____	
11. _____	_____	_____	_____	
<u>75</u> = Total Cover				
Woody Vine Stratum (Plot size: 15ft radius)				
1. _____	_____	_____	_____	Hydrophytic Vegetation Present? Yes <input type="checkbox"/> No <input checked="" type="checkbox"/>
2. _____	_____	_____	_____	
<u>0</u> = Total Cover				
% Bare Ground in Herb Stratum <u>0</u>				
Remarks:				

SOIL

Sampling Point: SP-3

Profile Description: (Describe to the depth needed to document the indicator or confirm the absence of indicators.)

Depth (inches)	Matrix		Redox Features			Loc ²	Texture	Remarks
	Color (moist)	%	Color (moist)	%	Type ¹			
0-18	10YR 4/3	100					GSL	

¹Type: C=Concentration, D=Depletion, RM=Reduced Matrix, CS=Covered or Coated Sand Grains.

²Location: PL=Pore Lining, M=Matrix.

Hydric Soil Indicators: (Applicable to all LRRs, unless otherwise noted.)

- | | |
|--|--|
| <input type="checkbox"/> Histosol (A1) | <input type="checkbox"/> Sandy Redox (S5) |
| <input type="checkbox"/> Histic Epipedon (A2) | <input type="checkbox"/> Stripped Matrix (S6) |
| <input type="checkbox"/> Black Histic (A3) | <input type="checkbox"/> Loamy Mucky Mineral (F1) (except MLRA 1) |
| <input type="checkbox"/> Hydrogen Sulfide (A4) | <input type="checkbox"/> Loamy Gleyed Matrix (F2) |
| <input type="checkbox"/> Depleted Below Dark Surface (A11) | <input type="checkbox"/> Depleted Matrix (F3) |
| <input type="checkbox"/> Thick Dark Surface (A12) | <input type="checkbox"/> Redox Dark Surface (F6) |
| <input type="checkbox"/> Sandy Mucky Mineral (S1) | <input type="checkbox"/> Depleted Dark Surface (F7) |
| <input type="checkbox"/> Sandy Gleyed Matrix (S4) | <input type="checkbox"/> Redox Depressions (F8) |

Indicators for Problematic Hydric Soils³:

- ☐ 2 cm Muck (A10)
☐ Red Parent Material (TF2)
☐ Very Shallow Dark Surface (TF12)
☐ Other (Explain in Remarks)

³Indicators of hydrophytic vegetation and wetland hydrology must be present, unless disturbed or problematic.

Restrictive Layer (if present):

Type: _____
Depth (inches): _____

Hydric Soil Present? Yes ☐ No ☒

Remarks:

HYDROLOGY

Wetland Hydrology Indicators:

Primary Indicators (minimum of one required; check all that apply)

- | | |
|--|--|
| <input type="checkbox"/> Surface Water (A1) | <input type="checkbox"/> Water-Stained Leaves (B9) (except MLRA 1, 2, 4A, and 4B) |
| <input type="checkbox"/> High Water Table (A2) | <input type="checkbox"/> Salt Crust (B11) |
| <input type="checkbox"/> Saturation (A3) | <input type="checkbox"/> Aquatic Invertebrates (B13) |
| <input type="checkbox"/> Water Marks (B1) | <input type="checkbox"/> Hydrogen Sulfide Odor (C1) |
| <input type="checkbox"/> Sediment Deposits (B2) | <input type="checkbox"/> Oxidized Rhizospheres along Living Roots (C3) |
| <input type="checkbox"/> Drift Deposits (B3) | <input type="checkbox"/> Presence of Reduced Iron (C4) |
| <input type="checkbox"/> Algal Mat or Crust (B4) | <input type="checkbox"/> Recent Iron Reduction in Tilled Soils (C6) |
| <input type="checkbox"/> Iron Deposits (B5) | <input type="checkbox"/> Stunted or Stressed Plants (D1) (LRR A) |
| <input type="checkbox"/> Surface Soil Cracks (B6) | <input type="checkbox"/> Other (Explain in Remarks) |
| <input type="checkbox"/> Inundation Visible on Aerial Imagery (B7) | |
| <input type="checkbox"/> Sparsely Vegetated Concave Surface (B8) | |

Secondary Indicators (2 or more required)

- ☐ Water-Stained Leaves (B9) (**MLRA 1, 2, 4A, and 4B**)
☐ Drainage Patterns (B10)
☐ Dry-Season Water Table (C2)
☐ Saturation Visible on Aerial Imagery (C9)
☐ Geomorphic Position (D2)
☐ Shallow Aquitard (D3)
☐ FAC-Neutral Test (D5)
☐ Raised Ant Mounds (D6) (**LRR A**)
☐ Frost-Heave Hummocks (D7)

Field Observations:

Surface Water Present? Yes ☐ No ☒ Depth (inches): _____
 Water Table Present? Yes ☐ No ☒ Depth (inches): _____
 Saturation Present? Yes ☐ No ☒ Depth (inches): _____
 (includes capillary fringe)

Wetland Hydrology Present? Yes ☐ No ☒

Describe Recorded Data (stream gauge, monitoring well, aerial photos, previous inspections), if available:

Remarks:

WETLAND DETERMINATION DATA FORM – Western Mountains, Valleys, and Coast Region

Project/Site: Artz Parcels City/County: Puyallup / Pierce Sampling Date: 29 AUG 2018
 Applicant/Owner: _____ State: Washington Sampling Point: SP-6
 Investigator(s): Habitat Technologies Section, Township, Range: S09, T19, R04E
 Landform (hillslope, terrace, etc.): _____ Local relief (concave, convex, none): _____ Slope (%): _____
 Subregion (LRR): A Lat: _____ Long: _____ Datum: _____
 Soil Map Unit Name: Everett very gravelly sandy loam NWI classification: _____

Are climatic / hydrologic conditions on the site typical for this time of year? Yes ☒ No ☐ (If no, explain in Remarks.)

Are Vegetation _____, Soil _____, or Hydrology _____ significantly disturbed? Are "Normal Circumstances" present? Yes ☒ No ☐

Are Vegetation _____, Soil _____, or Hydrology _____ naturally problematic? (If needed, explain any answers in Remarks.)

SUMMARY OF FINDINGS – Attach site map showing sampling point locations, transects, important features, etc.

Hydrophytic Vegetation Present? Yes <input checked="" type="checkbox"/> No <input type="checkbox"/> Hydric Soil Present? Yes <input checked="" type="checkbox"/> No <input type="checkbox"/> Wetland Hydrology Present? Yes <input checked="" type="checkbox"/> No <input type="checkbox"/>	Is the Sampled Area within a Wetland? Yes <input checked="" type="checkbox"/> No <input type="checkbox"/>
Remarks: Wetland	

VEGETATION – Use scientific names of plants.

<p><u>Tree Stratum</u> (Plot size: <u>15ft radius</u>)</p> <table style="width: 100%;"> <thead> <tr> <th></th> <th style="text-align: center;">Absolute % Cover</th> <th style="text-align: center;">Dominant Species?</th> <th style="text-align: center;">Indicator Status</th> </tr> </thead> <tbody> <tr><td>1. <u>i</u></td><td></td><td></td><td></td></tr> <tr><td>2. _____</td><td></td><td></td><td></td></tr> <tr><td>3. _____</td><td></td><td></td><td></td></tr> <tr><td>4. _____</td><td></td><td></td><td></td></tr> <tr><td colspan="4" style="text-align: right;"><u>0</u> = Total Cover</td></tr> </tbody> </table> <p><u>Sapling/Shrub Stratum</u> (Plot size: <u>15ft radius</u>)</p> <table style="width: 100%;"> <tbody> <tr><td>1. <u>Cornus stolonifera</u></td><td style="text-align: center;"><u>100</u></td><td style="text-align: center;"><u>YES</u></td><td style="text-align: center;"><u>FACW</u></td></tr> <tr><td>2. <u>Rubus spectabilis</u></td><td style="text-align: center;"><u>10</u></td><td style="text-align: center;"><u>YES</u></td><td style="text-align: center;"><u>FAC+</u></td></tr> <tr><td>3. _____</td><td></td><td></td><td></td></tr> <tr><td>4. _____</td><td></td><td></td><td></td></tr> <tr><td>5. _____</td><td></td><td></td><td></td></tr> <tr><td colspan="4" style="text-align: right;"><u>110</u> = Total Cover</td></tr> </tbody> </table> <p><u>Herb Stratum</u> (Plot size: <u>15ft radius</u>)</p> <table style="width: 100%;"> <tbody> <tr><td>1. <u>Athyrium filix-femina</u></td><td style="text-align: center;"><u>5</u></td><td style="text-align: center;"><u>YES</u></td><td style="text-align: center;"><u>FAC</u></td></tr> <tr><td>2. <u>Lysichitum americanum</u></td><td style="text-align: center;"><u>20</u></td><td style="text-align: center;"><u>YES</u></td><td style="text-align: center;"><u>OBL</u></td></tr> <tr><td>3. _____</td><td></td><td></td><td></td></tr> <tr><td>4. _____</td><td></td><td></td><td></td></tr> <tr><td>5. _____</td><td></td><td></td><td></td></tr> <tr><td>6. _____</td><td></td><td></td><td></td></tr> <tr><td>7. _____</td><td></td><td></td><td></td></tr> <tr><td>8. _____</td><td></td><td></td><td></td></tr> <tr><td>9. _____</td><td></td><td></td><td></td></tr> <tr><td>10. _____</td><td></td><td></td><td></td></tr> <tr><td>11. _____</td><td></td><td></td><td></td></tr> <tr><td colspan="4" style="text-align: right;"><u>25</u> = Total Cover</td></tr> </tbody> </table> <p><u>Woody Vine Stratum</u> (Plot size: <u>15ft radius</u>)</p> <table style="width: 100%;"> <tbody> <tr><td>1. _____</td><td></td><td></td><td></td></tr> <tr><td>2. _____</td><td></td><td></td><td></td></tr> <tr><td colspan="4" style="text-align: right;"><u>0</u> = Total Cover</td></tr> </tbody> </table> <p>% Bare Ground in Herb Stratum <u>0</u></p>		Absolute % Cover	Dominant Species?	Indicator Status	1. <u>i</u>				2. _____				3. _____				4. _____				<u>0</u> = Total Cover				1. <u>Cornus stolonifera</u>	<u>100</u>	<u>YES</u>	<u>FACW</u>	2. <u>Rubus spectabilis</u>	<u>10</u>	<u>YES</u>	<u>FAC+</u>	3. _____				4. _____				5. _____				<u>110</u> = Total Cover				1. <u>Athyrium filix-femina</u>	<u>5</u>	<u>YES</u>	<u>FAC</u>	2. <u>Lysichitum americanum</u>	<u>20</u>	<u>YES</u>	<u>OBL</u>	3. _____				4. _____				5. _____				6. _____				7. _____				8. _____				9. _____				10. _____				11. _____				<u>25</u> = Total Cover				1. _____				2. _____				<u>0</u> = Total Cover				<p>Dominance Test worksheet:</p> <p>Number of Dominant Species That Are OBL, FACW, or FAC: <u>3</u> (A)</p> <p>Total Number of Dominant Species Across All Strata: <u>4</u> (B)</p> <p>Percent of Dominant Species That Are OBL, FACW, or FAC: <u>75</u> (A/B)</p> <p>Prevalence Index worksheet:</p> <table style="width: 100%;"> <thead> <tr> <th style="text-align: left;">Total % Cover of:</th> <th style="text-align: left;">Multiply by:</th> </tr> </thead> <tbody> <tr><td>OBL species _____</td><td>x 1 = _____</td></tr> <tr><td>FACW species _____</td><td>x 2 = _____</td></tr> <tr><td>FAC species _____</td><td>x 3 = _____</td></tr> <tr><td>FACU species _____</td><td>x 4 = _____</td></tr> <tr><td>UPL species _____</td><td>x 5 = _____</td></tr> <tr><td>Column Totals: _____</td><td>(A) _____ (B) _____</td></tr> <tr><td colspan="2" style="text-align: center;">Prevalence Index = B/A = _____</td></tr> </tbody> </table> <p>Hydrophytic Vegetation Indicators:</p> <p><input type="checkbox"/> Rapid Test for Hydrophytic Vegetation</p> <p><input checked="" type="checkbox"/> Dominance Test is >50%</p> <p><input type="checkbox"/> Prevalence Index is ≤3.0¹</p> <p><input type="checkbox"/> Morphological Adaptations¹ (Provide supporting data in Remarks or on a separate sheet)</p> <p><input type="checkbox"/> Wetland Non-Vascular Plants¹</p> <p><input type="checkbox"/> Problematic Hydrophytic Vegetation¹ (Explain)</p> <p>¹Indicators of hydric soil and wetland hydrology must be present, unless disturbed or problematic.</p> <p>Hydrophytic Vegetation Present? Yes <input checked="" type="checkbox"/> No <input type="checkbox"/></p>	Total % Cover of:	Multiply by:	OBL species _____	x 1 = _____	FACW species _____	x 2 = _____	FAC species _____	x 3 = _____	FACU species _____	x 4 = _____	UPL species _____	x 5 = _____	Column Totals: _____	(A) _____ (B) _____	Prevalence Index = B/A = _____	
	Absolute % Cover	Dominant Species?	Indicator Status																																																																																																																										
1. <u>i</u>																																																																																																																													
2. _____																																																																																																																													
3. _____																																																																																																																													
4. _____																																																																																																																													
<u>0</u> = Total Cover																																																																																																																													
1. <u>Cornus stolonifera</u>	<u>100</u>	<u>YES</u>	<u>FACW</u>																																																																																																																										
2. <u>Rubus spectabilis</u>	<u>10</u>	<u>YES</u>	<u>FAC+</u>																																																																																																																										
3. _____																																																																																																																													
4. _____																																																																																																																													
5. _____																																																																																																																													
<u>110</u> = Total Cover																																																																																																																													
1. <u>Athyrium filix-femina</u>	<u>5</u>	<u>YES</u>	<u>FAC</u>																																																																																																																										
2. <u>Lysichitum americanum</u>	<u>20</u>	<u>YES</u>	<u>OBL</u>																																																																																																																										
3. _____																																																																																																																													
4. _____																																																																																																																													
5. _____																																																																																																																													
6. _____																																																																																																																													
7. _____																																																																																																																													
8. _____																																																																																																																													
9. _____																																																																																																																													
10. _____																																																																																																																													
11. _____																																																																																																																													
<u>25</u> = Total Cover																																																																																																																													
1. _____																																																																																																																													
2. _____																																																																																																																													
<u>0</u> = Total Cover																																																																																																																													
Total % Cover of:	Multiply by:																																																																																																																												
OBL species _____	x 1 = _____																																																																																																																												
FACW species _____	x 2 = _____																																																																																																																												
FAC species _____	x 3 = _____																																																																																																																												
FACU species _____	x 4 = _____																																																																																																																												
UPL species _____	x 5 = _____																																																																																																																												
Column Totals: _____	(A) _____ (B) _____																																																																																																																												
Prevalence Index = B/A = _____																																																																																																																													
Remarks:																																																																																																																													

SOIL

Sampling Point: SP-6

Profile Description: (Describe to the depth needed to document the indicator or confirm the absence of indicators.)

Depth (inches)	Matrix		Redox Features			Loc ²	Texture	Remarks
	Color (moist)	%	Color (moist)	%	Type ¹			
0-20	10YR 2/1	100					SIL	

¹Type: C=Concentration, D=Depletion, RM=Reduced Matrix, CS=Covered or Coated Sand Grains.

²Location: PL=Pore Lining, M=Matrix.

Hydric Soil Indicators: (Applicable to all LRRs, unless otherwise noted.)

- | | |
|--|--|
| <input type="checkbox"/> Histosol (A1) | <input type="checkbox"/> Sandy Redox (S5) |
| <input type="checkbox"/> Histic Epipedon (A2) | <input type="checkbox"/> Stripped Matrix (S6) |
| <input type="checkbox"/> Black Histic (A3) | <input type="checkbox"/> Loamy Mucky Mineral (F1) (except MLRA 1) |
| <input type="checkbox"/> Hydrogen Sulfide (A4) | <input type="checkbox"/> Loamy Gleyed Matrix (F2) |
| <input type="checkbox"/> Depleted Below Dark Surface (A11) | <input type="checkbox"/> Depleted Matrix (F3) |
| <input checked="" type="checkbox"/> Thick Dark Surface (A12) | <input type="checkbox"/> Redox Dark Surface (F6) |
| <input type="checkbox"/> Sandy Mucky Mineral (S1) | <input type="checkbox"/> Depleted Dark Surface (F7) |
| <input type="checkbox"/> Sandy Gleyed Matrix (S4) | <input type="checkbox"/> Redox Depressions (F8) |

Indicators for Problematic Hydric Soils³:

- ☐ 2 cm Muck (A10)
- ☐ Red Parent Material (TF2)
- ☐ Very Shallow Dark Surface (TF12)
- ☐ Other (Explain in Remarks)

³Indicators of hydrophytic vegetation and wetland hydrology must be present, unless disturbed or problematic.

Restrictive Layer (if present):

Type: _____

Depth (inches): _____

Hydric Soil Present? Yes ☒ No ☐

Remarks:

HYDROLOGY

Wetland Hydrology Indicators:

Primary Indicators (minimum of one required; check all that apply)

- | | |
|---|---|
| <input type="checkbox"/> Surface Water (A1) | <input checked="" type="checkbox"/> Water-Stained Leaves (B9) (except MLRA 1, 2, 4A, and 4B) |
| <input type="checkbox"/> High Water Table (A2) | <input type="checkbox"/> Salt Crust (B11) |
| <input checked="" type="checkbox"/> Saturation (A3) | <input type="checkbox"/> Aquatic Invertebrates (B13) |
| <input checked="" type="checkbox"/> Water Marks (B1) | <input type="checkbox"/> Hydrogen Sulfide Odor (C1) |
| <input type="checkbox"/> Sediment Deposits (B2) | <input type="checkbox"/> Oxidized Rhizospheres along Living Roots (C3) |
| <input type="checkbox"/> Drift Deposits (B3) | <input type="checkbox"/> Presence of Reduced Iron (C4) |
| <input type="checkbox"/> Algal Mat or Crust (B4) | <input type="checkbox"/> Recent Iron Reduction in Tilled Soils (C6) |
| <input type="checkbox"/> Iron Deposits (B5) | <input type="checkbox"/> Stunted or Stressed Plants (D1) (LRR A) |
| <input checked="" type="checkbox"/> Surface Soil Cracks (B6) | <input type="checkbox"/> Other (Explain in Remarks) |
| <input type="checkbox"/> Inundation Visible on Aerial Imagery (B7) | |
| <input checked="" type="checkbox"/> Sparsely Vegetated Concave Surface (B8) | |

Secondary Indicators (2 or more required)

- ☒ Water-Stained Leaves (B9) (**MLRA 1, 2, 4A, and 4B**)
- ☐ Drainage Patterns (B10)
- ☐ Dry-Season Water Table (C2)
- ☐ Saturation Visible on Aerial Imagery (C9)
- ☐ Geomorphic Position (D2)
- ☐ Shallow Aquitard (D3)
- ☐ FAC-Neutral Test (D5)
- ☐ Raised Ant Mounds (D6) (**LRR A**)
- ☐ Frost-Heave Hummocks (D7)

Field Observations:

Surface Water Present? Yes ☐ No ☒ Depth (inches): _____

Water Table Present? Yes ☐ No ☒ Depth (inches): _____

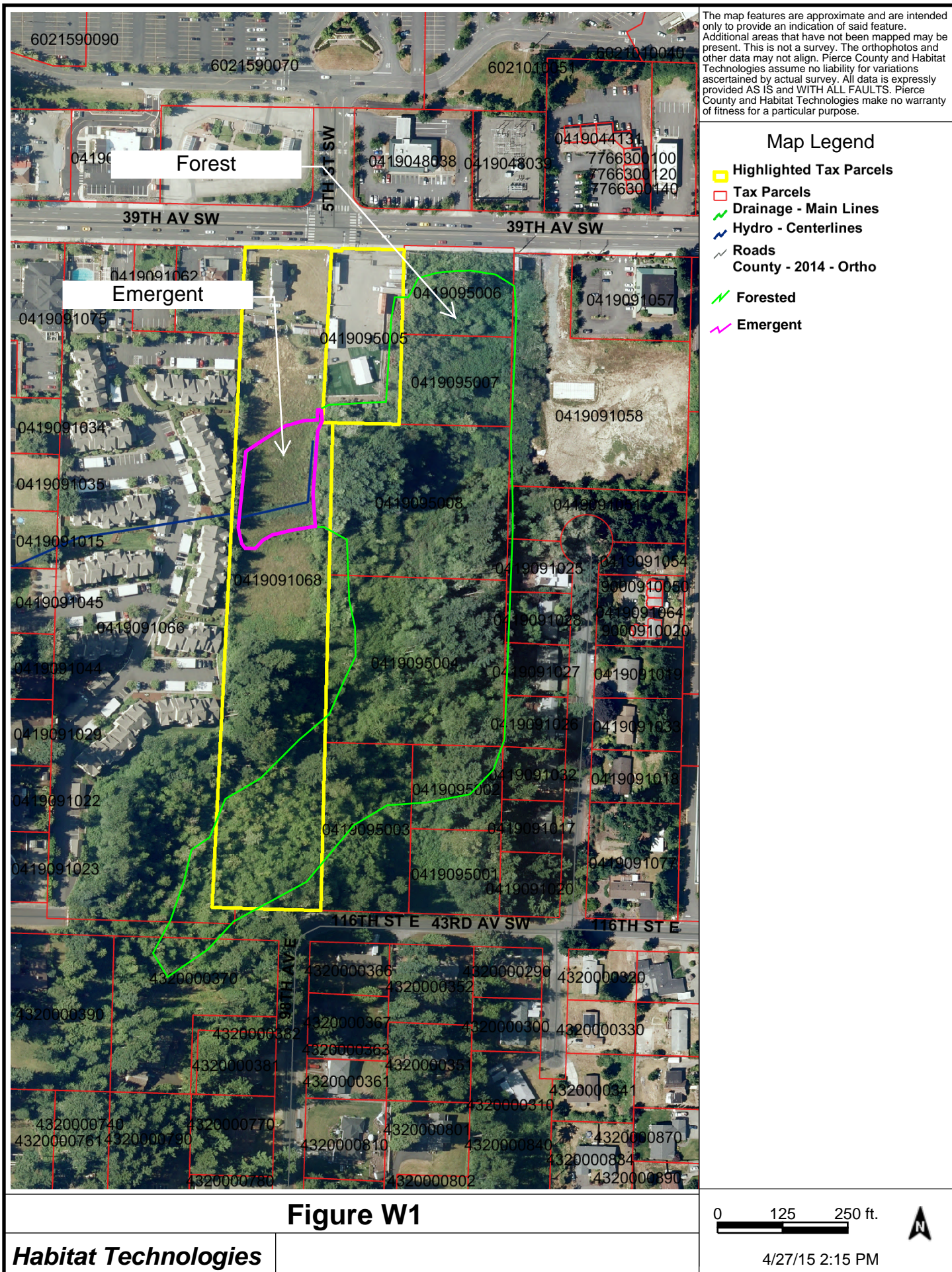
Saturation Present? Yes ☒ No ☐ Depth (inches): 0
(includes capillary fringe)

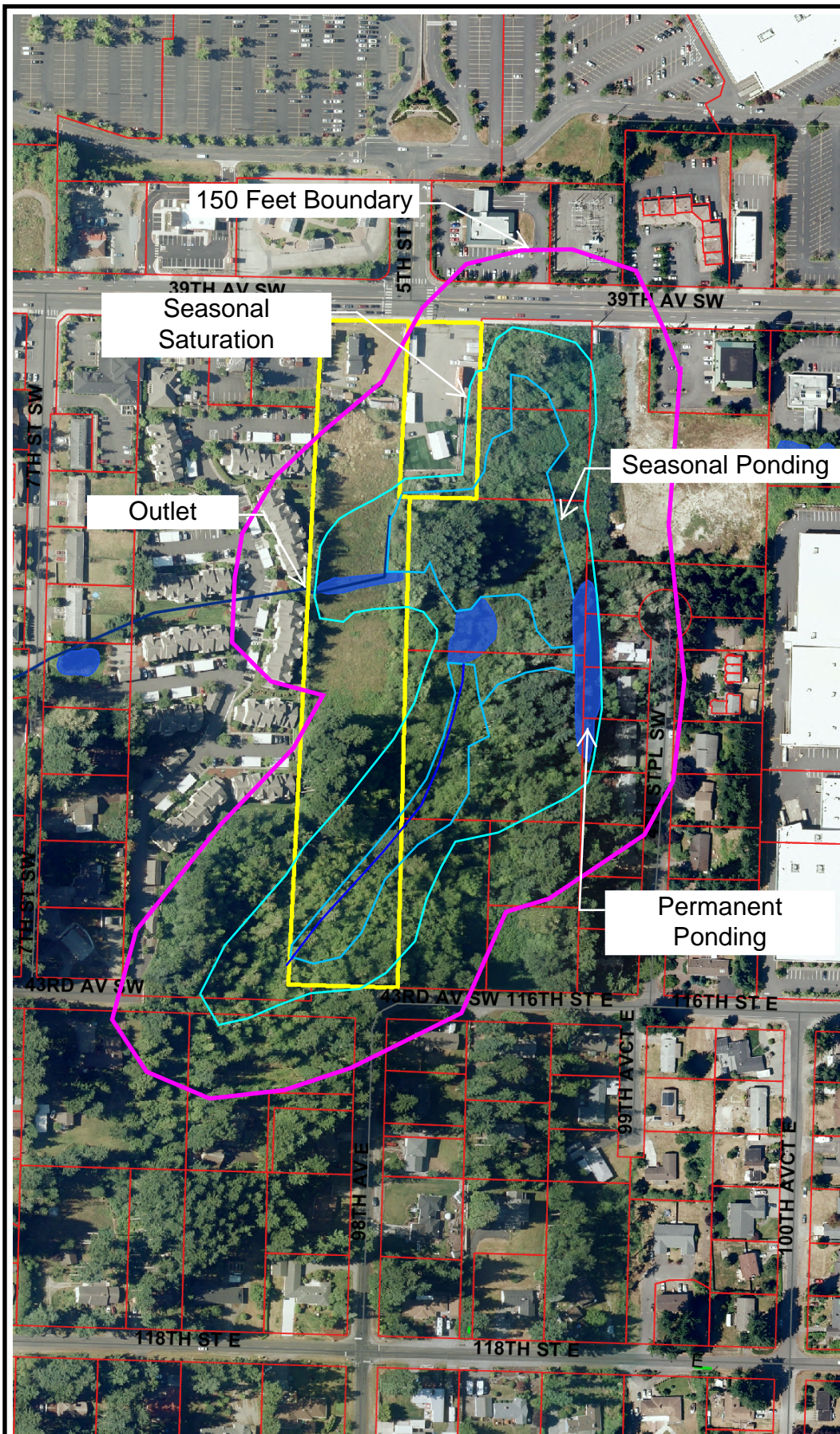
Wetland Hydrology Present? Yes ☒ No ☐

Describe Recorded Data (stream gauge, monitoring well, aerial photos, previous inspections), if available:

Remarks:

APPENDIX B – Wetland Rating Worksheet



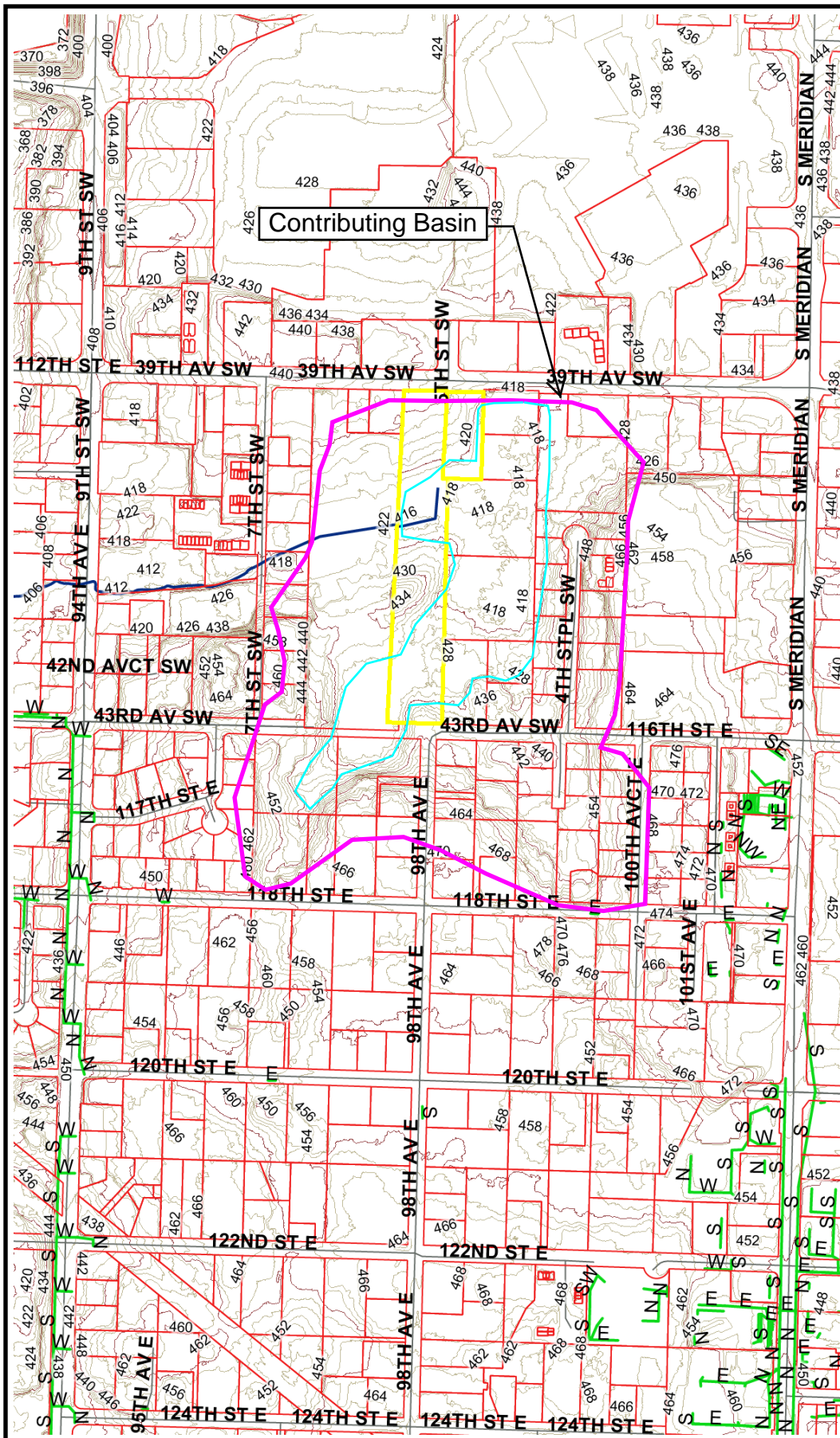


The map features are approximate and are intended only to provide an indication of said feature. Additional areas that have not been mapped may be present. This is not a survey. The orthophotos and other data may not align. Pierce County and Habitat Technologies assume no liability for variations ascertained by actual survey. All data is expressly provided AS IS and WITH ALL FAULTS. Pierce County and Habitat Technologies make no warranty of fitness for a particular purpose.

Map Legend

- Highlighted Tax Parcels
- Tax Parcels
- Drainage - Main Lines
- Hydro - Centerlines
- Roads
- Hydro - Surface Boundaries
- County - 2014 - Ortho
- Permanent Ponding
- Seasonal Ponding
- Seasonal Saturation
- Area within 150 Feet of Wetland Boundary

Figure W2



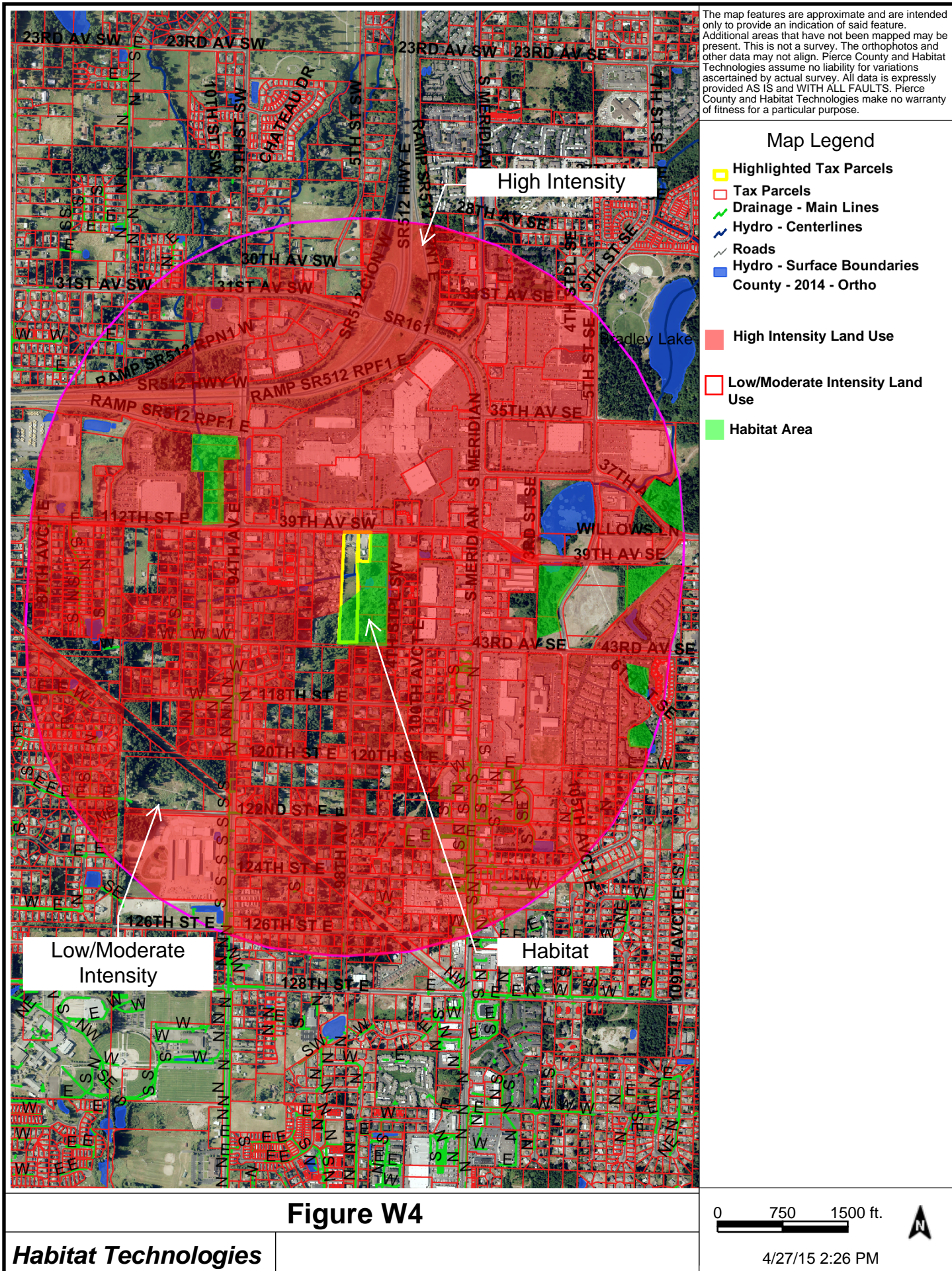
The map features are approximate and are intended only to provide an indication of said feature. Additional areas that have not been mapped may be present. This is not a survey. The orthophotos and other data may not align. Pierce County and Habitat Technologies assume no liability for variations ascertained by actual survey. All data is expressly provided AS IS and WITH ALL FAULTS. Pierce County and Habitat Technologies make no warranty of fitness for a particular purpose.

Map Legend

- Highlighted Tax Parcels
- Tax Parcels
- Drainage - Main Lines
- Hydro - Centerlines
- Roads
- Contours - 2011
- 10' Contour Line
- 2' Contour Line
- Contributing Basin Area

Figure W3





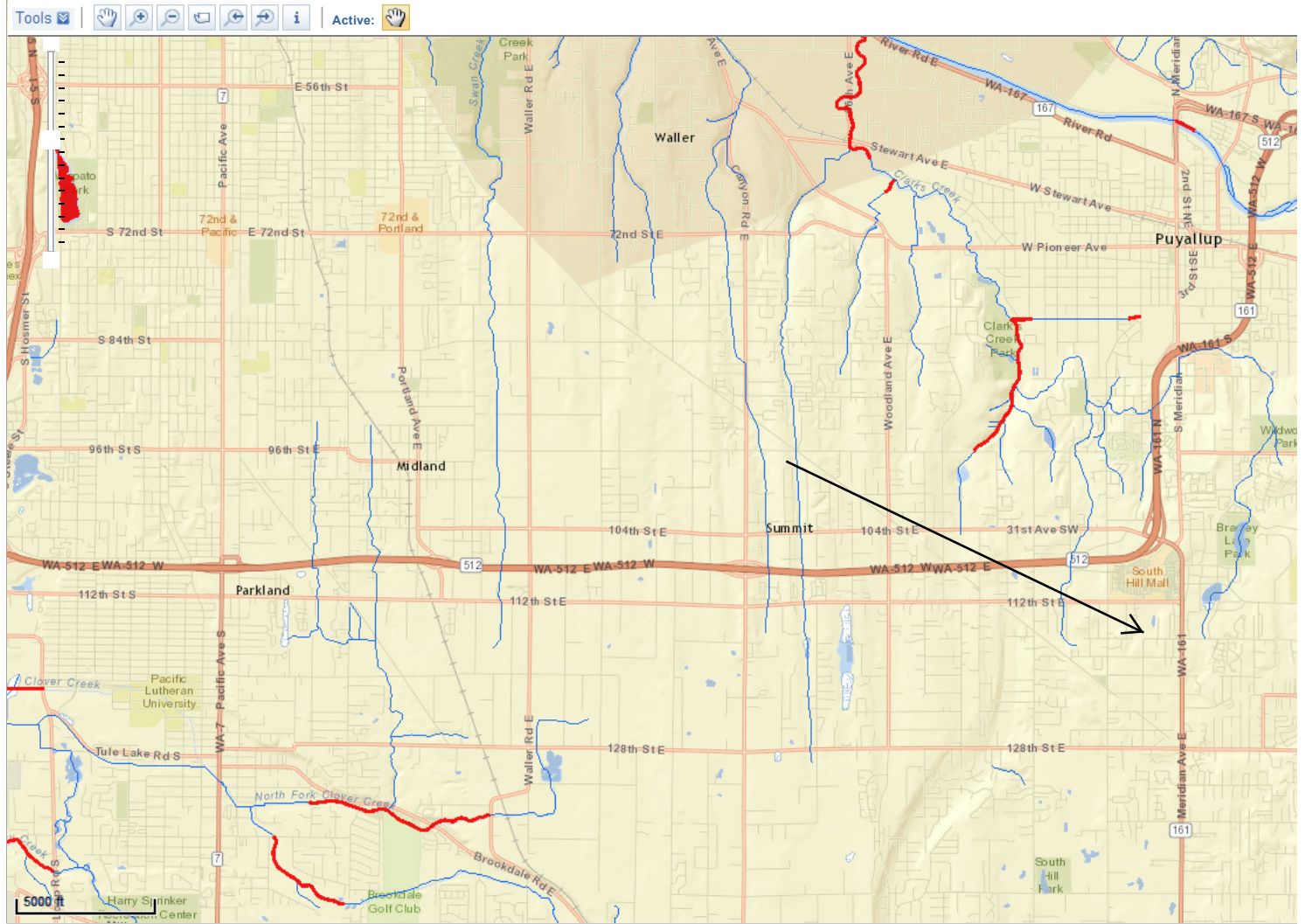
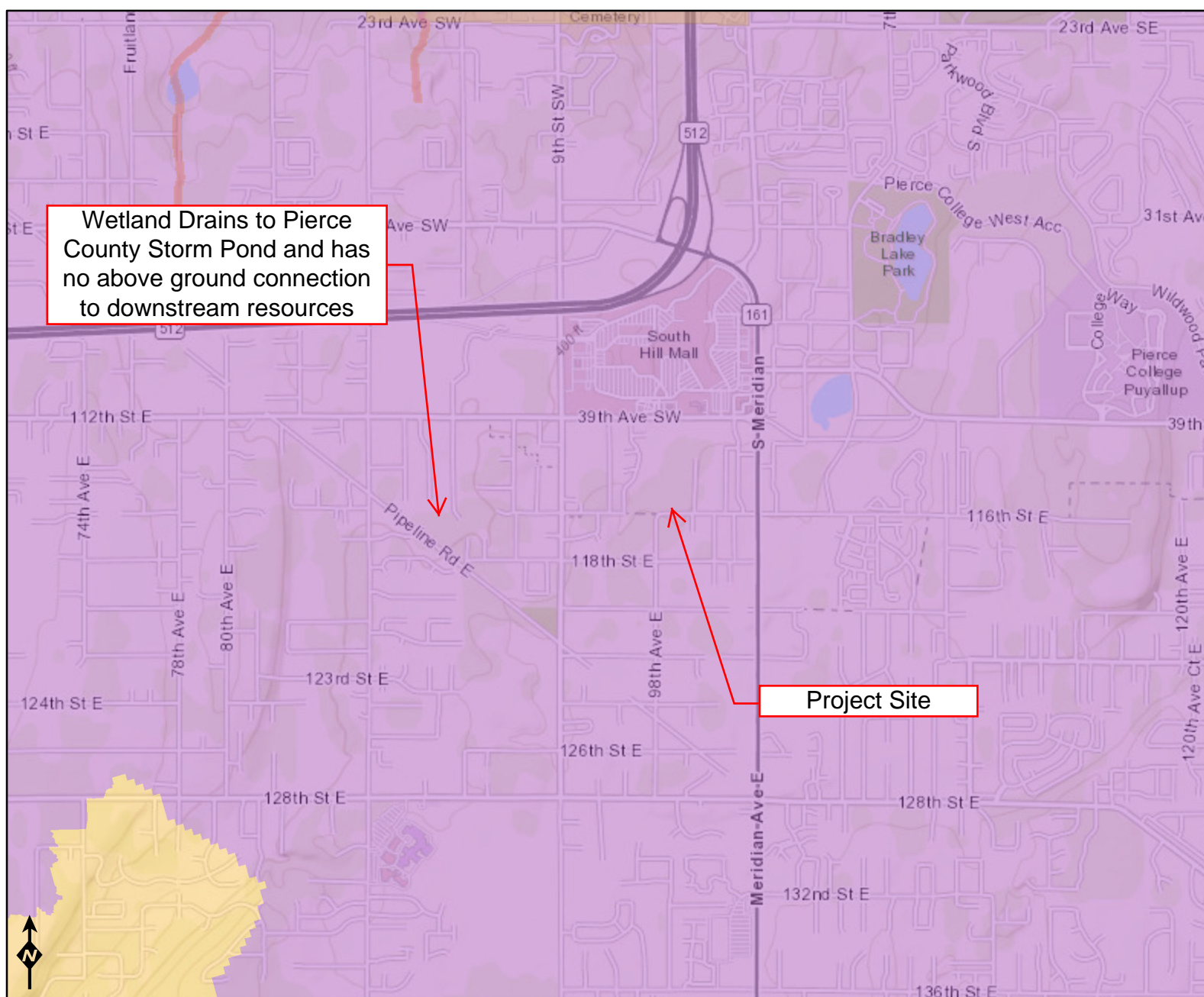


Figure W5

Figure W6



Assessed Waters/Sediment

Water

- Category 5 - 303d
- Category 4C
- Category 4B
- Category 4A
- Category 2
- Category 1

Sediment

- Category 5 - 303d
- Category 4C
- Category 4B
- Category 4A
- Category 2
- Category 1

WQ Improvement Projects

- Approved
- In Development

Wetland name or number A

RATING SUMMARY – Western Washington

Name of wetland (or ID #): Wetland A Date of site visit: 27 APR 2015

Rated by Habitat Technologies Trained by Ecology? ☒ Yes ☐ No Date of training 2014

HGM Class used for rating Depressional Wetland has multiple HGM classes? ☐ Y ☒ N

NOTE: Form is not complete without the figures requested (*figures can be combined*).

Source of base aerial photo/map Pierce County GIS

OVERALL WETLAND CATEGORY 3 (based on functions ☒ or special characteristics ☐)

1. Category of wetland based on FUNCTIONS

☐ **Category I** – Total score = 23 - 27

☐ **Category II** – Total score = 20 - 22

☒ **Category III** – Total score = 16 - 19

☐ **Category IV** – Total score = 9 - 15

FUNCTION	Improving Water Quality	Hydrologic	Habitat	
Circle the appropriate ratings				
Site Potential	H <input type="checkbox"/> M <input checked="" type="checkbox"/> L	H <input type="checkbox"/> M <input checked="" type="checkbox"/> L	H <input type="checkbox"/> M <input checked="" type="checkbox"/> L	
Landscape Potential	<input checked="" type="checkbox"/> H <input type="checkbox"/> M <input type="checkbox"/> L	<input checked="" type="checkbox"/> H <input type="checkbox"/> M <input type="checkbox"/> L	H <input type="checkbox"/> M <input type="checkbox"/> L <input checked="" type="checkbox"/>	
Value	H <input type="checkbox"/> M <input type="checkbox"/> L <input checked="" type="checkbox"/>	H <input type="checkbox"/> M <input checked="" type="checkbox"/> L	H <input type="checkbox"/> M <input checked="" type="checkbox"/> L	TOTAL
Score Based on Ratings	6	7	5	18

**Score for each
function based
on three
ratings**
(*order of ratings
is not
important*)

9 = H,H,H

8 = H,H,M

7 = H,H,L

7 = H,M,M

6 = H,M,L

6 = M,M,M

5 = H,L,L

5 = M,M,L

4 = M,L,L

3 = L,L,L

2. Category based on SPECIAL CHARACTERISTICS of wetland

CHARACTERISTIC	CATEGORY
Estuarine	I II
Wetland of High Conservation Value	I
Bog	I
Mature Forest	I
Old Growth Forest	I
Coastal Lagoon	I II
Interdunal	I II III IV
None of the above	X

Wetland name or number A

Maps and figures required to answer questions correctly for Western Washington

Depressional Wetlands

Map of:	To answer questions:	Figure #
Cowardin plant classes	D 1.3, H 1.1, H 1.4	W1
Hydroperiods	D 1.4, H 1.2	W2
Location of outlet (<i>can be added to map of hydroperiods</i>)	D 1.1, D 4.1	W2
Boundary of area within 150 ft of the wetland (<i>can be added to another figure</i>)	D 2.2, D 5.2	W2
Map of the contributing basin	D 4.3, D 5.3	W3
1 km Polygon: Area that extends 1 km from entire wetland edge - including polygons for accessible habitat and undisturbed habitat	H 2.1, H 2.2, H 2.3	W4
Screen capture of map of 303(d) listed waters in basin (from Ecology website)	D 3.1, D 3.2	W5
Screen capture of list of TMDLs for WRIA in which unit is found (from web)	D 3.3	W6

Riverine Wetlands

Map of:	To answer questions:	Figure #
Cowardin plant classes	H 1.1, H 1.4	↑
Hydroperiods	H 1.2	↑
Ponded depressions	R 1.1	↑
Boundary of area within 150 ft of the wetland (<i>can be added to another figure</i>)	R 2.4	↑
Plant cover of trees, shrubs, and herbaceous plants	R 1.2, R 4.2	↑
Width of unit vs. width of stream (<i>can be added to another figure</i>)	R 4.1	N/A
Map of the contributing basin	R 2.2, R 2.3, R 5.2	↑
1 km Polygon: Area that extends 1 km from entire wetland edge - including polygons for accessible habitat and undisturbed habitat	H 2.1, H 2.2, H 2.3	↑
Screen capture of map of 303(d) listed waters in basin (from Ecology website)	R 3.1	↑
Screen capture of list of TMDLs for WRIA in which unit is found (from web)	R 3.2, R 3.3	↓

Lake Fringe Wetlands

Map of:	To answer questions:	Figure #
Cowardin plant classes	L 1.1, L 4.1, H 1.1, H 1.4	↑
Plant cover of trees, shrubs, and herbaceous plants	L 1.2	↑
Boundary of area within 150 ft of the wetland (<i>can be added to another figure</i>)	L 2.2	↑
1 km Polygon: Area that extends 1 km from entire wetland edge - including polygons for accessible habitat and undisturbed habitat	H 2.1, H 2.2, H 2.3	N/A
Screen capture of map of 303(d) listed waters in basin (from Ecology website)	L 3.1, L 3.2	↑
Screen capture of list of TMDLs for WRIA in which unit is found (from web)	L 3.3	↓

Slope Wetlands

Map of:	To answer questions:	Figure #
Cowardin plant classes	H 1.1, H 1.4	↑
Hydroperiods	H 1.2	↑
Plant cover of dense trees, shrubs, and herbaceous plants	S 1.3	↑
Plant cover of dense, rigid trees, shrubs, and herbaceous plants (<i>can be added to figure above</i>)	S 4.1	N/A
Boundary of 150 ft buffer (<i>can be added to another figure</i>)	S 2.1, S 5.1	↑
1 km Polygon: Area that extends 1 km from entire wetland edge - including polygons for accessible habitat and undisturbed habitat	H 2.1, H 2.2, H 2.3	↑
Screen capture of map of 303(d) listed waters in basin (from Ecology website)	S 3.1, S 3.2	↑
Screen capture of list of TMDLs for WRIA in which unit is found (from web)	S 3.3	↓

HGM Classification of Wetlands in Western Washington

For questions 1-7, the criteria described must apply to the entire unit being rated.

If the hydrologic criteria listed in each question do not apply to the entire unit being rated, you probably have a unit with multiple HGM classes. In this case, identify which hydrologic criteria in questions 1-7 apply, and go to Question 8.

1. Are the water levels in the entire unit usually controlled by tides except during floods?

NO – go to 2

YES – the wetland class is **Tidal Fringe** – go to 1.1

- 1.1 Is the salinity of the water during periods of annual low flow below 0.5 ppt (parts per thousand)?

NO – **Saltwater Tidal Fringe (Estuarine)**

YES – **Freshwater Tidal Fringe**

*If your wetland can be classified as a Freshwater Tidal Fringe use the forms for **Riverine** wetlands. If it is Saltwater Tidal Fringe it is an **Estuarine** wetland and is not scored. This method **cannot** be used to score functions for estuarine wetlands.*

2. The entire wetland unit is flat and precipitation is the only source (>90%) of water to it. Groundwater and surface water runoff are NOT sources of water to the unit.

NO – go to 3

YES – The wetland class is **Flats**

*If your wetland can be classified as a Flats wetland, use the form for **Depressional** wetlands.*

3. Does the entire wetland unit **meet all** of the following criteria?

- ___ The vegetated part of the wetland is on the shores of a body of permanent open water (without any plants on the surface at any time of the year) at least 20 ac (8 ha) in size;
___ At least 30% of the open water area is deeper than 6.6 ft (2 m).

NO – go to 4

YES – The wetland class is **Lake Fringe** (Lacustrine Fringe)

4. Does the entire wetland unit **meet all** of the following criteria?

- ___ The wetland is on a slope (*slope can be very gradual*),
___ The water flows through the wetland in one direction (unidirectional) and usually comes from seeps. It may flow subsurface, as sheetflow, or in a swale without distinct banks,
___ The water leaves the wetland **without being impounded**.

NO – go to 5

YES – The wetland class is **Slope**

NOTE: Surface water does not pond in these type of wetlands except occasionally in very small and shallow depressions or behind hummocks (depressions are usually <3 ft diameter and less than 1 ft deep).

5. Does the entire wetland unit **meet all** of the following criteria?

- ___ The unit is in a valley, or stream channel, where it gets inundated by overbank flooding from that stream or river,
___ The overbank flooding occurs at least once every 2 years.

Wetland name or number A

NO – go to 6

YES – The wetland class is Riverine

NOTE: The Riverine unit can contain depressions that are filled with water when the river is not flooding

6. Is the entire wetland unit in a topographic depression in which water ponds, or is saturated to the surface, at some time during the year? *This means that any outlet, if present, is higher than the interior of the wetland.*

NO – go to 7

YES – The wetland class is Depressional

7. Is the entire wetland unit located in a very flat area with no obvious depression and no overbank flooding? The unit does not pond surface water more than a few inches. The unit seems to be maintained by high groundwater in the area. The wetland may be ditched, but has no obvious natural outlet.

NO – go to 8

YES – The wetland class is Depressional

8. Your wetland unit seems to be difficult to classify and probably contains several different HGM classes. For example, seeps at the base of a slope may grade into a riverine floodplain, or a small stream within a Depressional wetland has a zone of flooding along its sides. **GO BACK AND IDENTIFY WHICH OF THE HYDROLOGIC REGIMES DESCRIBED IN QUESTIONS 1-7 APPLY TO DIFFERENT AREAS IN THE UNIT** (make a rough sketch to help you decide). Use the following table to identify the appropriate class to use for the rating system if you have several HGM classes present within the wetland unit being scored.

NOTE: Use this table only if the class that is recommended in the second column represents 10% or more of the total area of the wetland unit being rated. If the area of the HGM class listed in column 2 is less than 10% of the unit; classify the wetland using the class that represents more than 90% of the total area.

HGM classes within the wetland unit being rated	HGM class to use in rating
Slope + Riverine	Riverine
Slope + Depressional	Depressional
Slope + Lake Fringe	Lake Fringe
Depressional + Riverine along stream within boundary of depression	Depressional
Depressional + Lake Fringe	Depressional
Riverine + Lake Fringe	Riverine
Salt Water Tidal Fringe and any other class of freshwater wetland	Treat as ESTUARINE

*If you are still unable to determine which of the above criteria apply to your wetland, or if you have **more than 2 HGM classes** within a wetland boundary, classify the wetland as Depressional for the rating.*

Wetland name or number A

DEPRESSIONAL AND FLATS WETLANDS	
Water Quality Functions - Indicators that the site functions to improve water quality	
D 1.0. Does the site have the potential to improve water quality?	
D 1.1. Characteristics of surface water outflows from the wetland: Wetland is a depression or flat depression (QUESTION 7 on key) with no surface water leaving it (no outlet). points = 3 Wetland has an intermittently flowing stream or ditch, OR highly constricted permanently flowing outlet. points = 2 Wetland has an unconstricted, or slightly constricted, surface outlet that is permanently flowing points = 1 Wetland is a flat depression (QUESTION 7 on key), whose outlet is a permanently flowing ditch. points = 1	2
D 1.2. The soil 2 in below the surface (or duff layer) is true clay or true organic (use NRCS definitions). Yes = 4 No = 0	0
D 1.3. Characteristics and distribution of persistent plants (Emergent, Scrub-shrub, and/or Forested Cowardin classes): Wetland has persistent, ungrazed, plants > 95% of area points = 5 Wetland has persistent, ungrazed, plants > ½ of area points = 3 Wetland has persistent, ungrazed plants > 1/10 of area points = 1 Wetland has persistent, ungrazed plants < 1/10 of area points = 0	3
D 1.4. Characteristics of seasonal ponding or inundation: <i>This is the area that is ponded for at least 2 months. See description in manual.</i> Area seasonally ponded is > ½ total area of wetland points = 4 Area seasonally ponded is > ¼ total area of wetland points = 2 Area seasonally ponded is < ¼ total area of wetland points = 0	2
Total for D 1	7

Rating of Site Potential If score is: 12-16 = H X 6-11 = M 0-5 = L Record the rating on the first page

D 2.0. Does the landscape have the potential to support the water quality function of the site?	
D 2.1. Does the wetland unit receive stormwater discharges?	Yes = 1 No = 0
D 2.2. Is > 10% of the area within 150 ft of the wetland in land uses that generate pollutants?	Yes = 1 No = 0
D 2.3. Are there septic systems within 250 ft of the wetland?	Yes = 1 No = 0
D 2.4. Are there other sources of pollutants coming into the wetland that are not listed in questions D 2.1-D 2.3?	Yes = 1 No = 0
Source _____	Yes = 1 No = 0
Total for D 2	3

Rating of Landscape Potential If score is: X 3 or 4 = H 1 or 2 = M 0 = L Record the rating on the first page

D 3.0. Is the water quality improvement provided by the site valuable to society?	
D 3.1. Does the wetland discharge directly (i.e., within 1 mi) to a stream, river, lake, or marine water that is on the 303(d) list?	Yes = 1 No = 0
D 3.2. Is the wetland in a basin or sub-basin where an aquatic resource is on the 303(d) list?	Yes = 1 No = 0
D 3.3. Has the site been identified in a watershed or local plan as important for maintaining water quality (answer YES if there is a TMDL for the basin in which the unit is found)?	Yes = 2 No = 0
Total for D 3	0

Rating of Value If score is: 2-4 = H 1 = M X 0 = L Record the rating on the first page

Wetland name or number A

DEPRESSIONAL AND FLATS WETLANDS

Hydrologic Functions - Indicators that the site functions to reduce flooding and stream degradation

D 4.0. Does the site have the potential to reduce flooding and erosion?

D 4.1. Characteristics of surface water outflows from the wetland:

- | | | |
|---|------------|---|
| Wetland is a depression or flat depression with no surface water leaving it (no outlet) | points = 4 | 2 |
| Wetland has an intermittently flowing stream or ditch, OR highly constricted permanently flowing outlet | points = 2 | |
| Wetland is a flat depression (QUESTION 7 on key), whose outlet is a permanently flowing ditch | points = 1 | |
| Wetland has an unconstricted, or slightly constricted, surface outlet that is permanently flowing | points = 0 | |

D 4.2. Depth of storage during wet periods: *Estimate the height of ponding above the bottom of the outlet. For wetlands with no outlet, measure from the surface of permanent water or if dry, the deepest part.*

- | | | |
|--|------------|---|
| Marks of ponding are 3 ft or more above the surface or bottom of outlet | points = 7 | 3 |
| Marks of ponding between 2 ft to < 3 ft from surface or bottom of outlet | points = 5 | |
| Marks are at least 0.5 ft to < 2 ft from surface or bottom of outlet | points = 3 | |
| The wetland is a "headwater" wetland | points = 3 | |
| Wetland is flat but has small depressions on the surface that trap water | points = 1 | |
| Marks of ponding less than 0.5 ft (6 in) | points = 0 | |

D 4.3. Contribution of the wetland to storage in the watershed: *Estimate the ratio of the area of upstream basin contributing surface water to the wetland to the area of the wetland unit itself.*

- | | | |
|---|------------|---|
| The area of the basin is less than 10 times the area of the unit | points = 5 | 5 |
| The area of the basin is 10 to 100 times the area of the unit | points = 3 | |
| The area of the basin is more than 100 times the area of the unit | points = 0 | |
| Entire wetland is in the Flats class | points = 5 | |

Total for D 4

Add the points in the boxes above

10

Rating of Site Potential If score is: 12-16 = H X 6-11 = M 0-5 = L

Record the rating on the first page

D 5.0. Does the landscape have the potential to support hydrologic functions of the site?

D 5.1. Does the wetland receive stormwater discharges? Yes = 1 No = 0

1

D 5.2. Is >10% of the area within 150 ft of the wetland in land uses that generate excess runoff? Yes = 1 No = 0

1

D 5.3. Is more than 25% of the contributing basin of the wetland covered with intensive human land uses (residential at >1 residence/ac, urban, commercial, agriculture, etc.)? Yes = 1 No = 0

1

Total for D 5

Add the points in the boxes above

3

Rating of Landscape Potential If score is: X 3 = H 1 or 2 = M 0 = L

Record the rating on the first page

D 6.0. Are the hydrologic functions provided by the site valuable to society?

D 6.1. The unit is in a landscape that has flooding problems. *Choose the description that best matches conditions around the wetland unit being rated. Do not add points. Choose the highest score if more than one condition is met.*

- | | | |
|--|------------|---|
| The wetland captures surface water that would otherwise flow down-gradient into areas where flooding has damaged human or natural resources (e.g., houses or salmon redds): | | 1 |
| • Flooding occurs in a sub-basin that is immediately down-gradient of unit. | points = 2 | |
| • Surface flooding problems are in a sub-basin farther down-gradient. | points = 1 | |
| Flooding from groundwater is an issue in the sub-basin. | points = 1 | |
| The existing or potential outflow from the wetland is so constrained by human or natural conditions that the water stored by the wetland cannot reach areas that flood. <i>Explain why</i> _____ | points = 0 | |
| There are no problems with flooding downstream of the wetland. | points = 0 | |

D 6.2. Has the site been identified as important for flood storage or flood conveyance in a regional flood control plan?

Yes = 2 No = 0

0

Total for D 6

Add the points in the boxes above

1

Rating of Value If score is: 2-4 = H X 1 = M 0 = L

Record the rating on the first page

Wetland name or number A

These questions apply to wetlands of all HGM classes.

HABITAT FUNCTIONS - Indicators that site functions to provide important habitat

H 1.0. Does the site have the potential to provide habitat?

H 1.1. Structure of plant community: *Indicators are Cowardin classes and strata within the Forested class. Check the Cowardin plant classes in the wetland. Up to 10 patches may be combined for each class to meet the threshold of ¼ ac or more than 10% of the unit if it is smaller than 2.5 ac. Add the number of structures checked.*

- | | | |
|--|----------------------------------|---|
| <input type="checkbox"/> Aquatic bed | 4 structures or more: points = 4 | 2 |
| <input checked="" type="checkbox"/> Emergent | 3 structures: points = 2 | |
| <input type="checkbox"/> Scrub-shrub (areas where shrubs have > 30% cover) | 2 structures: points = 1 | |
| <input checked="" type="checkbox"/> Forested (areas where trees have > 30% cover) | 1 structure: points = 0 | |
| <i>If the unit has a Forested class, check if:</i> | | |
| <input checked="" type="checkbox"/> The Forested class has 3 out of 5 strata (canopy, sub-canopy, shrubs, herbaceous, moss/ground-cover) that each cover 20% within the Forested polygon | | |

H 1.2. Hydroperiods

Check the types of water regimes (hydroperiods) present within the wetland. The water regime has to cover more than 10% of the wetland or ¼ ac to count (*see text for descriptions of hydroperiods*).

- | | | |
|---|-------------------------------------|---|
| <input checked="" type="checkbox"/> Permanently flooded or inundated | 4 or more types present: points = 3 | 3 |
| <input checked="" type="checkbox"/> Seasonally flooded or inundated | 3 types present: points = 2 | |
| <input type="checkbox"/> Occasionally flooded or inundated | 2 types present: points = 1 | |
| <input checked="" type="checkbox"/> Saturated only | 1 type present: points = 0 | |
| <input type="checkbox"/> Permanently flowing stream or river in, or adjacent to, the wetland | | |
| <input checked="" type="checkbox"/> Seasonally flowing stream in, or adjacent to, the wetland | | |
| <input type="checkbox"/> Lake Fringe wetland | 2 points | |
| <input type="checkbox"/> Freshwater tidal wetland | 2 points | |

H 1.3. Richness of plant species

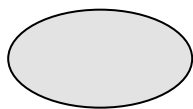
Count the number of plant species in the wetland that cover at least 10 ft².

*Different patches of the same species can be combined to meet the size threshold and you do not have to name the species. **Do not include Eurasian milfoil, reed canarygrass, purple loosestrife, Canadian thistle***

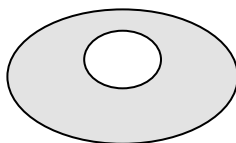
- | | | |
|------------------------------|------------|---|
| If you counted: > 19 species | points = 2 | 2 |
| 5 - 19 species | points = 1 | |
| < 5 species | points = 0 | |

H 1.4. Interspersion of habitats

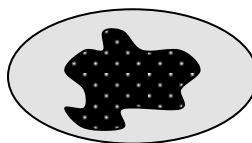
Decide from the diagrams below whether interspersions among Cowardin plants classes (described in H 1.1), or the classes and unvegetated areas (can include open water or mudflats) is high, moderate, low, or none. *If you have four or more plant classes or three classes and open water, the rating is always high.*



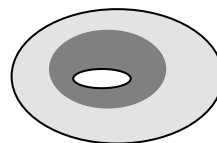
None = 0 points



Low = 1 point

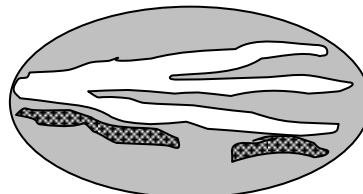
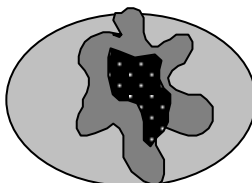
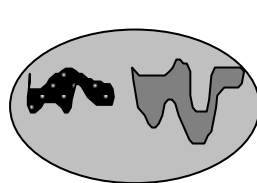


Moderate = 2 points



1

All three diagrams in this row are **HIGH** = 3points



Wetland name or number A

<p>H 1.5. Special habitat features:</p> <p>Check the habitat features that are present in the wetland. <i>The number of checks is the number of points.</i></p> <p><input checked="" type="checkbox"/> Large, downed, woody debris within the wetland (> 4 in diameter and 6 ft long).</p> <p><input checked="" type="checkbox"/> Standing snags (dbh > 4 in) within the wetland</p> <p><input type="checkbox"/> Undercut banks are present for at least 6.6 ft (2 m) and/or overhanging plants extends at least 3.3 ft (1 m) over a stream (or ditch) in, or contiguous with the wetland, for at least 33 ft (10 m)</p> <p><input type="checkbox"/> Stable steep banks of fine material that might be used by beaver or muskrat for denning (> 30 degree slope) OR signs of recent beaver activity are present (<i>cut shrubs or trees that have not yet weathered where wood is exposed</i>)</p> <p><input checked="" type="checkbox"/> At least ¼ ac of thin-stemmed persistent plants or woody branches are present in areas that are permanently or seasonally inundated (<i>structures for egg-laying by amphibians</i>)</p> <p><input type="checkbox"/> Invasive plants cover less than 25% of the wetland area in every stratum of plants (<i>see H 1.1 for list of strata</i>)</p>		3
Total for H 1	Add the points in the boxes above	11

Rating of Site Potential If score is: 15-18 = H X 7-14 = M 0-6 = L

Record the rating on the first page

H 2.0. Does the landscape have the potential to support the habitat functions of the site?		
<p>H 2.1. Accessible habitat (include <i>only habitat that directly abuts wetland unit</i>).</p> <p>Calculate: % undisturbed habitat <u>0</u> + [(% moderate and low intensity land uses)/2] <u>2</u> = <u>2</u> %</p> <p>If total accessible habitat is:</p> <p>> 1/3 (33.3%) of 1 km Polygon points = 3</p> <p>20-33% of 1 km Polygon points = 2</p> <p>10-19% of 1 km Polygon points = 1</p> <p>< 10% of 1 km Polygon points = 0</p>		0
<p>H 2.2. Undisturbed habitat in 1 km Polygon around the wetland.</p> <p>Calculate: % undisturbed habitat <u>0</u> + [(% moderate and low intensity land uses)/2] <u>10</u> = <u>10</u> %</p> <p>Undisturbed habitat > 50% of Polygon points = 3</p> <p>Undisturbed habitat 10-50% and in 1-3 patches points = 2</p> <p>Undisturbed habitat 10-50% and > 3 patches points = 1</p> <p>Undisturbed habitat < 10% of 1 km Polygon points = 0</p>		0
<p>H 2.3. Land use intensity in 1 km Polygon: If</p> <p>> 50% of 1 km Polygon is high intensity land use points = (- 2)</p> <p>≤ 50% of 1 km Polygon is high intensity points = 0</p>		(-2)
Total for H 2	Add the points in the boxes above	(-2)

Rating of Landscape Potential If score is: 4-6 = H 1-3 = M X < 1 = L

Record the rating on the first page

H 3.0. Is the habitat provided by the site valuable to society?		
<p>H 3.1. Does the site provide habitat for species valued in laws, regulations, or policies? <i>Choose only the highest score that applies to the wetland being rated.</i></p> <p>Site meets ANY of the following criteria: points = 2</p> <p>— It has 3 or more priority habitats within 100 m (see next page)</p> <p>— It provides habitat for Threatened or Endangered species (any plant or animal on the state or federal lists)</p> <p>— It is mapped as a location for an individual WDFW priority species</p> <p>— It is a Wetland of High Conservation Value as determined by the Department of Natural Resources</p> <p>— It has been categorized as an important habitat site in a local or regional comprehensive plan, in a Shoreline Master Plan, or in a watershed plan</p> <p>Site has 1 or 2 priority habitats (listed on next page) within 100 m points = 1</p> <p>Site does not meet any of the criteria above points = 0</p>		1

Rating of Value If score is: 2 = H X 1 = M 0 = L

Record the rating on the first page

WDFW Priority Habitats

Priority habitats listed by WDFW (see complete descriptions of WDFW priority habitats, and the counties in which they can be found, in: Washington Department of Fish and Wildlife. 2008. Priority Habitat and Species List. Olympia, Washington. 177 pp. <http://wdfw.wa.gov/publications/00165/wdfw00165.pdf> or access the list from here: <http://wdfw.wa.gov/conservation/phs/list/>)

Count how many of the following priority habitats are within 330 ft (100 m) of the wetland unit: **NOTE:** *This question is independent of the land use between the wetland unit and the priority habitat.*

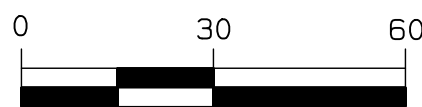
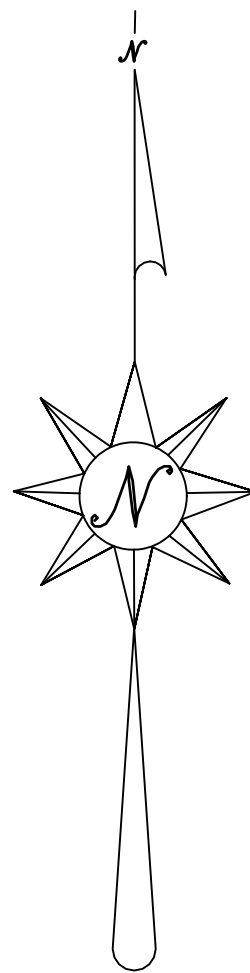
- **Aspen Stands:** Pure or mixed stands of aspen greater than 1 ac (0.4 ha).
- **Biodiversity Areas and Corridors:** Areas of habitat that are relatively important to various species of native fish and wildlife (*full descriptions in WDFW PHS report*).
- **Herbaceous Balds:** Variable size patches of grass and forbs on shallow soils over bedrock.
- ☒ **Old-growth/Mature forests:** Old-growth west of Cascade crest – Stands of at least 2 tree species, forming a multi-layered canopy with occasional small openings; with at least 8 trees/ac (20 trees/ha) > 32 in (81 cm) dbh or > 200 years of age. Mature forests – Stands with average diameters exceeding 21 in (53 cm) dbh; crown cover may be less than 100%; decay, decadence, numbers of snags, and quantity of large downed material is generally less than that found in old-growth; 80-200 years old west of the Cascade crest.
- **Oregon White Oak:** Woodland stands of pure oak or oak/conifer associations where canopy coverage of the oak component is important (*full descriptions in WDFW PHS report p. 158 – see web link above*).
- **Riparian:** The area adjacent to aquatic systems with flowing water that contains elements of both aquatic and terrestrial ecosystems which mutually influence each other.
- **Westside Prairies:** Herbaceous, non-forested plant communities that can either take the form of a dry prairie or a wet prairie (*full descriptions in WDFW PHS report p. 161 – see web link above*).
- **Instream:** The combination of physical, biological, and chemical processes and conditions that interact to provide functional life history requirements for instream fish and wildlife resources.
- **Nearshore:** Relatively undisturbed nearshore habitats. These include Coastal Nearshore, Open Coast Nearshore, and Puget Sound Nearshore. (*full descriptions of habitats and the definition of relatively undisturbed are in WDFW report – see web link on previous page*).
- **Caves:** A naturally occurring cavity, recess, void, or system of interconnected passages under the earth in soils, rock, ice, or other geological formations and is large enough to contain a human.
- **Cliffs:** Greater than 25 ft (7.6 m) high and occurring below 5000 ft elevation.
- **Talus:** Homogenous areas of rock rubble ranging in average size 0.5 - 6.5 ft (0.15 - 2.0 m), composed of basalt, andesite, and/or sedimentary rock, including riprap slides and mine tailings. May be associated with cliffs.
- **Snags and Logs:** Trees are considered snags if they are dead or dying and exhibit sufficient decay characteristics to enable cavity excavation/use by wildlife. Priority snags have a diameter at breast height of > 20 in (51 cm) in western Washington and are > 6.5 ft (2 m) in height. Priority logs are > 12 in (30 cm) in diameter at the largest end, and > 20 ft (6 m) long.

Note: All vegetated wetlands are by definition a priority habitat but are not included in this list because they are addressed elsewhere.

APPENDIX C – Site Plan

SITE EXHIBIT

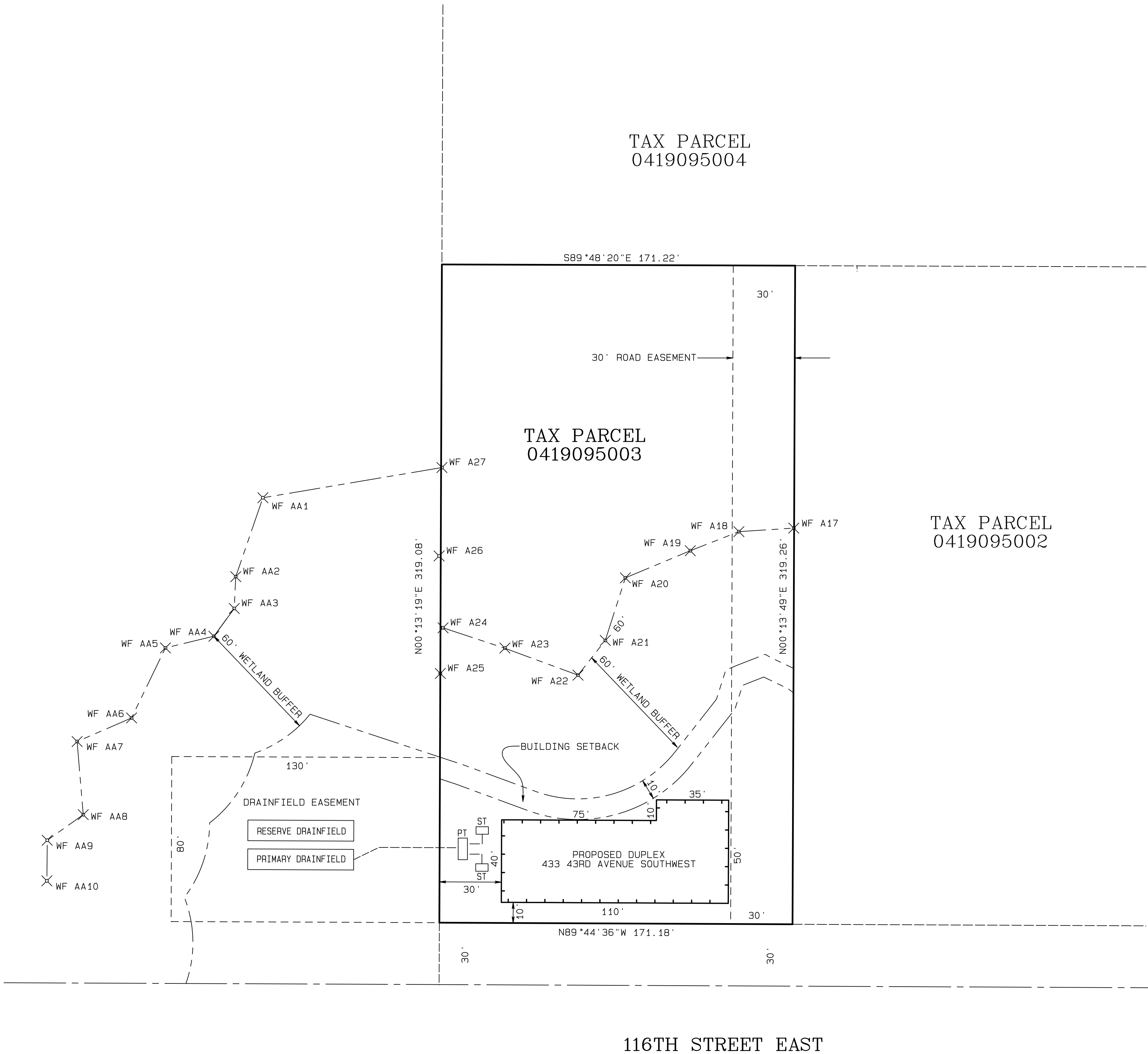
A PORTION OF THE NE 1/4 OF THE NE 1/4 OF SECTION 9, TOWNSHIP 19 N., RANGE 4 E., W.M.
PIERCE COUNTY,
WASHINGTON



SCALE:
1" = 30'

SURVEYOR'S NOTES:

- 1) THE MONUMENT CONTROL SHOWN FOR THIS SITE WAS ACCOMPLISHED BY FIELD TRAVERSE UTILIZING A ONE (1) SECOND THEODOLITE WITH INTEGRAL ELECTRONIC DISTANCE MEASURING METER (GEODIMETER 600) AND REAL TIME KINEMATIC (RTK) / STATIC GLOBAL POSITIONING SYSTEM (GPS). LINEAR AND ANGULAR CLOSURE OF THE TRAVERSES MEET THE STANDARDS OF WAC 332-130-090.
- 2) LOCATIONS OF UNDERGROUND UTILITIES SHOWN HEREON ARE BASED UPON FIELD MEASUREMENT.
- 3) THIS SURVEY REPRESENTS PHYSICAL IMPROVEMENT CONDITIONS AS THEY EXISTED JULY 29, 2020. THE DATE OF THIS FIELD SURVEY. SURVEY DURING THE COURSE OF THE SURVEY EARTHWORK WAS BEING CONDUCTED ON-SITE AND THE TOPOGRAPHY WAS CHANGING.
- 4) THIS IS SURVEY WAS MADE WITHOUT THE BENEFIT OF A TITLE REPORT. NO ADDITIONAL RESEARCH HAS BEEN ATTEMPTED.
- 5) IT IS NOT THE INTENT OF THIS SURVEY TO SHOW EASEMENTS OR RESERVATIONS WHICH MAY EFFECT THIS SITE.
- 6) THE PURPOSE OF THIS SURVEY IS TO PROVIDE EXISTING CONDITIONS FOR ENGINEERING DESIGN.
- 7) CONTOURS SHOWN WERE DERIVED FROM THE DIRECT FIELD MEASUREMENTS SHOWN HEREON.
- 8) CONTOURS SHOWN HEREON ARE TO NATIONAL MAPPING STANDARDS, ONE HALF CONTOUR INTERVAL.
- 9) THERE ARE NO DIRECT LIMITATIONS OF USE PER WAC 332-130-145 26.
- 10) BOUNDARY INFORMATION SHOWN HEREON IS FROM A PRIOR BOUNDARY SURVEY OF THE PARCEL.
- 11) UTILITIES THAT WERE VISIBLE DURING THE COURSE OF THIS SURVEY ARE SHOWN AND REFLECT THEIR FIELD MEASUREMENT.
- 12) THE INTENT OF THIS SURVEY WAS TO LOCATE VISIBLE UTILITIES, STRUCTURES, CONTOURS, SPOT ELEVATIONS AND DESIGN FEATURES IN THE AREA OF THE REQUESTED SURVEY. BEYOND WHAT WAS VISIBLE ON-SITE, NO ATTEMPT WAS MADE TO LOCATE UNDERGROUND UTILITIES.



LEGEND:
WF = WETLAND FLAG

VERTICAL DATUM:
NORTH AMERICAN VERTICAL DATUM OF 1988 (NAVD 88)

BENCHMARKS:
BASE:
PIERCE COUNTY BENCHMARK NO.21 037 (SPSN-0137) (NGS DL2772)
FOUND NGS, THE MARK IS AN N.G.S. CLASS A MARK (STAINLESS
STEEL ROD IN AN ALUMINUM CASE WITH LID.
ELEVATION: 448.08 FEET.

BASIS OF BEARING:
GEODETIC NORTH. BASED UPON GLOBAL POSITIONING SYSTEM (GPS)
LAMBERT GRID WASHINGTON STATE NORTH ZONE COORDINATES. A
CONVERGENCE ANGLE OF 01°18'08.74" COUNTERCLOCKWISE WAS
APPLIED AT A BRASS PIN IN CONCRETE, INCASED, LOCATED AT THE
INTERSECTION OF MERIDIAN AVENUE EAST AND 47TH AVENUE SE.
THE MONUMENT IS THE EAST QUARTER CORNER OF SECTION 9,
TOWNSHIP 19 NORTH, RANGE 4 EAST OF THE W.M.
THE NORTH AMERICAN DATUM OF 1983/1991 (NAD 83/91) GRID
COORDINATES WERE FOUND TO BE 666644.065 / 1194302.130 AT
THAT POINT. THE INVERSE OF BOTH THE SEA LEVEL CORRECTION
FACTOR OF 0.999981618 AND THE GRID SCALE FACTOR OF
0.999962785 WAS APPLIED TO THE GRID COORDINATES FOR SHOWN
GROUND DISTANCES.



**CENTRE
POINTE**
Consultants, Inc., P.S.

14209 29th Street East, #105 - Sumner, WA 98390
253-987-5924 main 253-987-7859 fax

DRAWN BY: D WOODS	CHECKED BY: N LARSON
DATE: AUG. 21, 2020	JOB NAME: EXHIBIT
SCALE: 1" = 30'	JOB NO.: 3999

INDEX DATA	NE-NE 9, T19N., R4E., W.M.
SURVEY FOR:	DAVID ARTZ 7917 110th STREET NORTHWEST GIG HARBOR, WA 98330
PIERCE COUNTY, WASHINGTON	
SHEET 1 OF 1	