






-  Project Areas Within Shoreline Jurisdiction


Proposed Features


 Impact Area Line


 Shared Use Path

 Roadway



 Drainage


 Signaling


 Signing


 ITS

Critical Areas


 FEMA Floodway 2017 Update (Pierce Co)
-  Regulated Floodplain 2017 (Pierce Co)


 Wetland Boundary


 Ordinary High Water Mark

 Puyallup Shoreline Master Program Environments

Pierce County Jurisdiction Boundaries

 Edgewood

 Puyallup

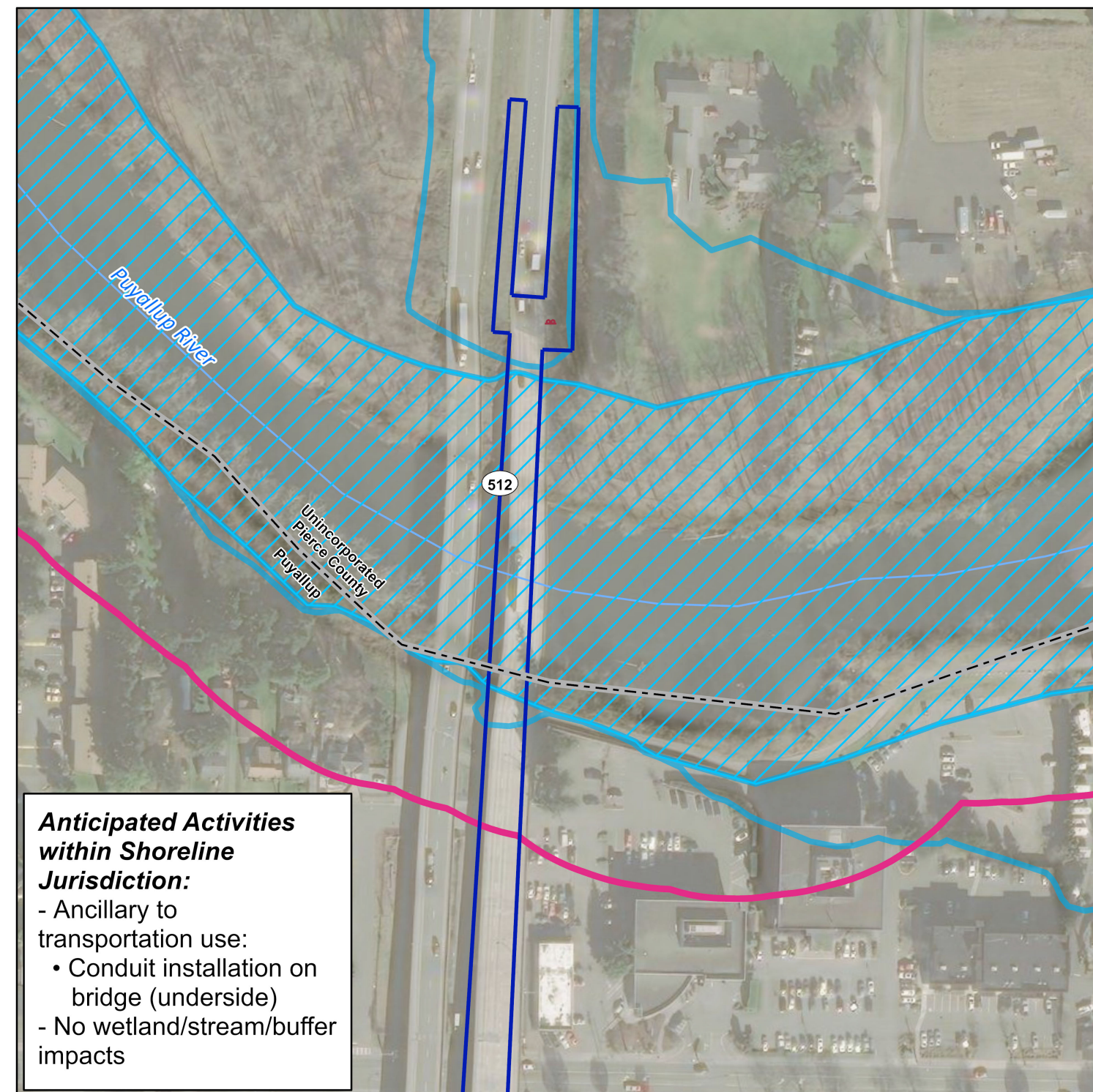
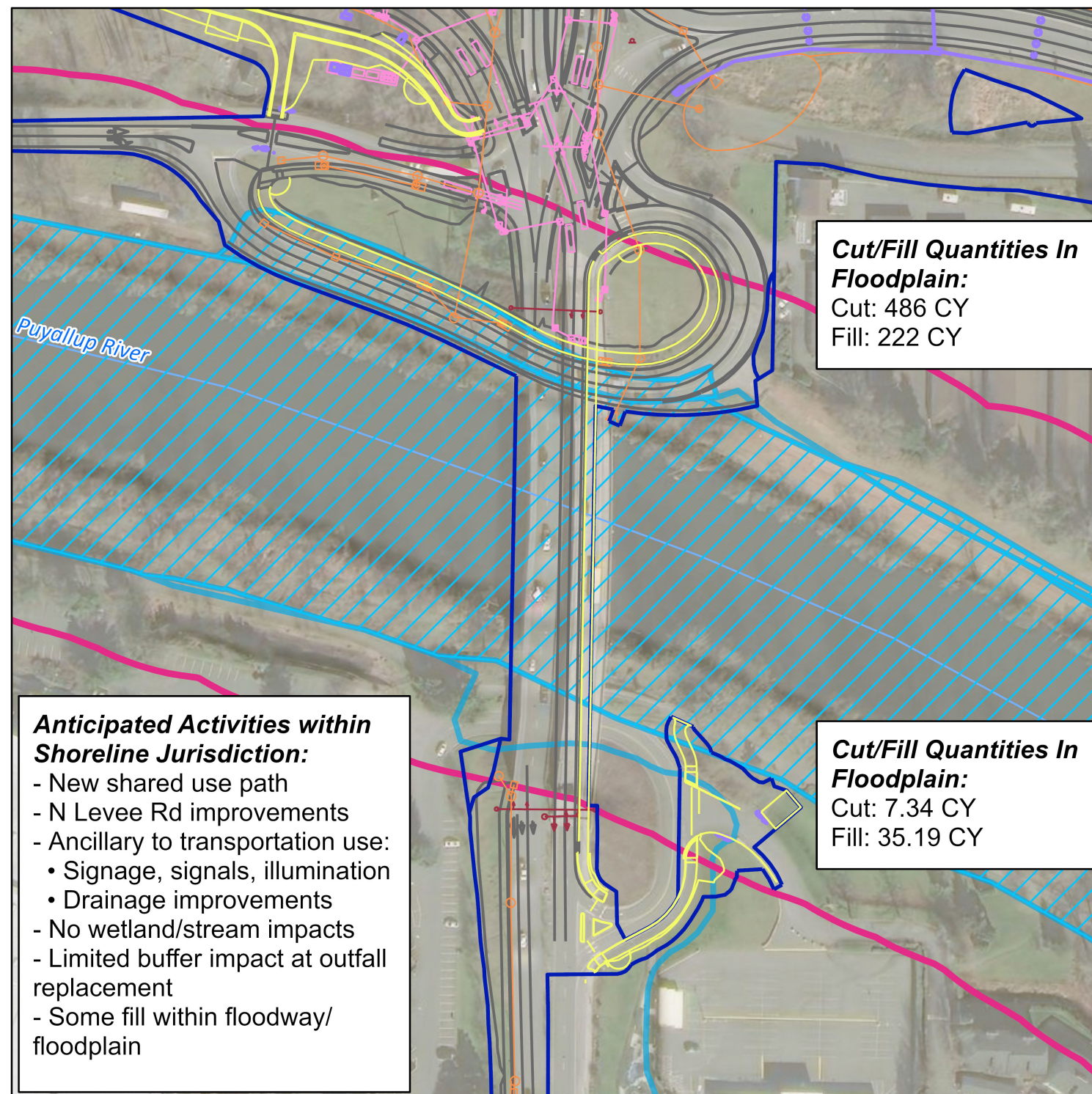
 Unincorporated Pierce County

City of Puyallup Shoreline Permit Vicinity Map - Draft

SR 167/I-5 to SR 161 – New Expressway Project (Stage 2 Project)

October 2022





Pierce County Jurisdiction Boundaries

Proposed Features

- Impact Area Line
- Shared Use Path
- Roadway

- Drainage
- Signaling
- Signing
- ITS

Critical Areas

- FEMA Floodway 2017 Update (Pierce Co)
- Regulated Floodplain 2017 (Pierce Co)
- Puyallup Shoreline Jurisdiction - Urban Conservancy

City of Puyallup Shoreline Permit Site Plan - Draft

SR 167/I-5 to SR 161 – New Expressway Project (Stage 2 Project)

October 2022

