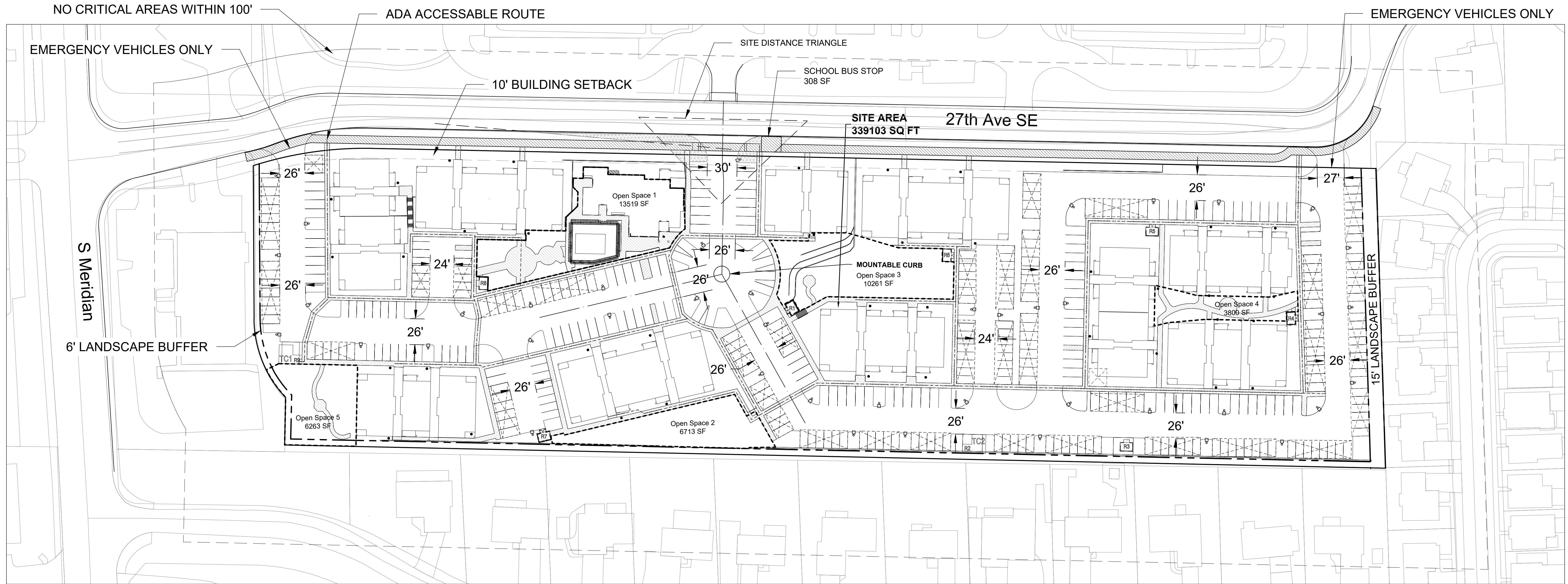


# BRADLEY HEIGHTS



**NOTES:**

- 378 TOTAL PARKING SPACES
- 378/1.5 PARKING SPOTS
- 233 UNITS PROPOSED
- 158 COMPACT PARKING SPOTS
- 41.80 PERCENT COMPACT
- 14 OF SPACES TO BE HANDICAP

TOTAL AREA: 339,103 SQ FT  
 IMPERVIOUS AREA: 268,873 SQ FT  
 LANDSCAPED AREA: 70,230 SQ FT

EASEMENTS: THERE ARE NO EXISTING EASEMENTS ON SITE

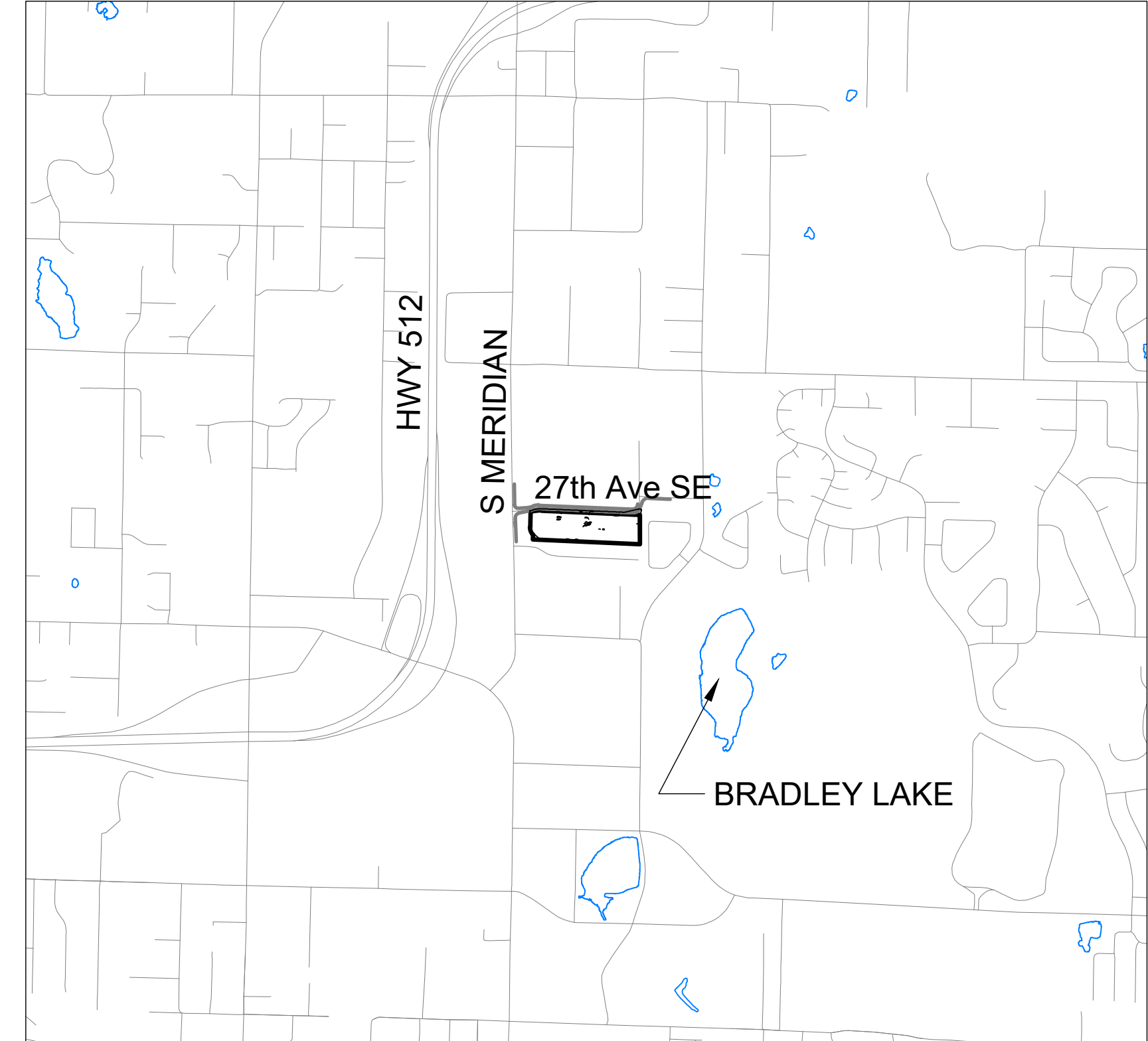
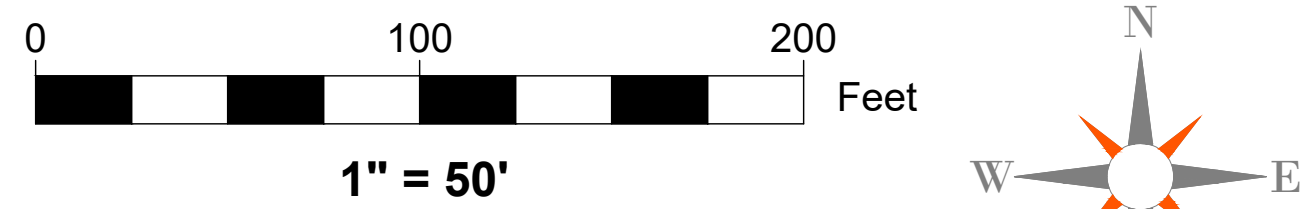
SETBACKS:  
 NORTH: 10' SETBACK TO BUILDINGS  
 WEST: 0' BUILDING SETBACK - 6' LANDSCAPE BUFFER  
 SOUTH: 0' BUILDING SETBACK - 6' LANDSCAPE BUFFER  
 EAST: 25' BUILDING SETBACK - 15' LANDSCAPE BUFFER

**LEGEND**

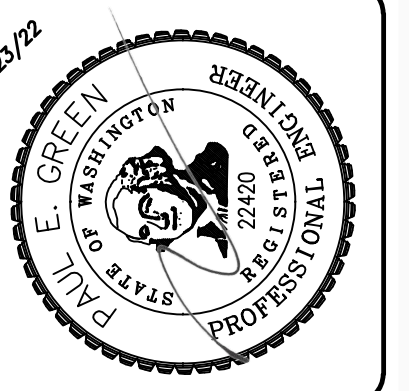
- OPEN SPACE BOUNDARY
- - - SITE DISTANCE TRIANGLES
- [Hatched Box] SITE DISTANCE HEIGHT RESTRICTED AREA

**Open Space**

1	13519 SF
2	6713 SF
3	10261 SF
4	3800 SF
5	6263 SF
<b>Total</b>	<b>40556 SF</b>
Required	33010 SF
Excess	7546 SF



VICINITY MAP  
 1" = 1/4 Mile



DATE	REVISION

JOB NO. 2527	DATE 8/23/22
DRAWN BY: JEC	CHECKED BY: JEC
APPROVED BY: JEC	APPROVED BY: JEC

**AZURE GREEN**  
 CONSULTANTS  
 + feasibility + planning + engineering + surveying

409 East Pioneer, Suite A - Puyallup, WA 98372 phone: 253.770.3144 fax: 253.770.3142

**BRADLEY HEIGHTS**  
 Azure Green Consultants  
 409 East Pioneer, Puyallup, WA 98372  
 Phone (253) 770-3144

Project Desc: BRADLEY HEIGHTS AZURE GREEN (AC) \Acad\Jobs\2527 - Bradley Heights\SITE 8-23-2022.dwg Plot Date/Time: 8/23/2022 3:05 PM