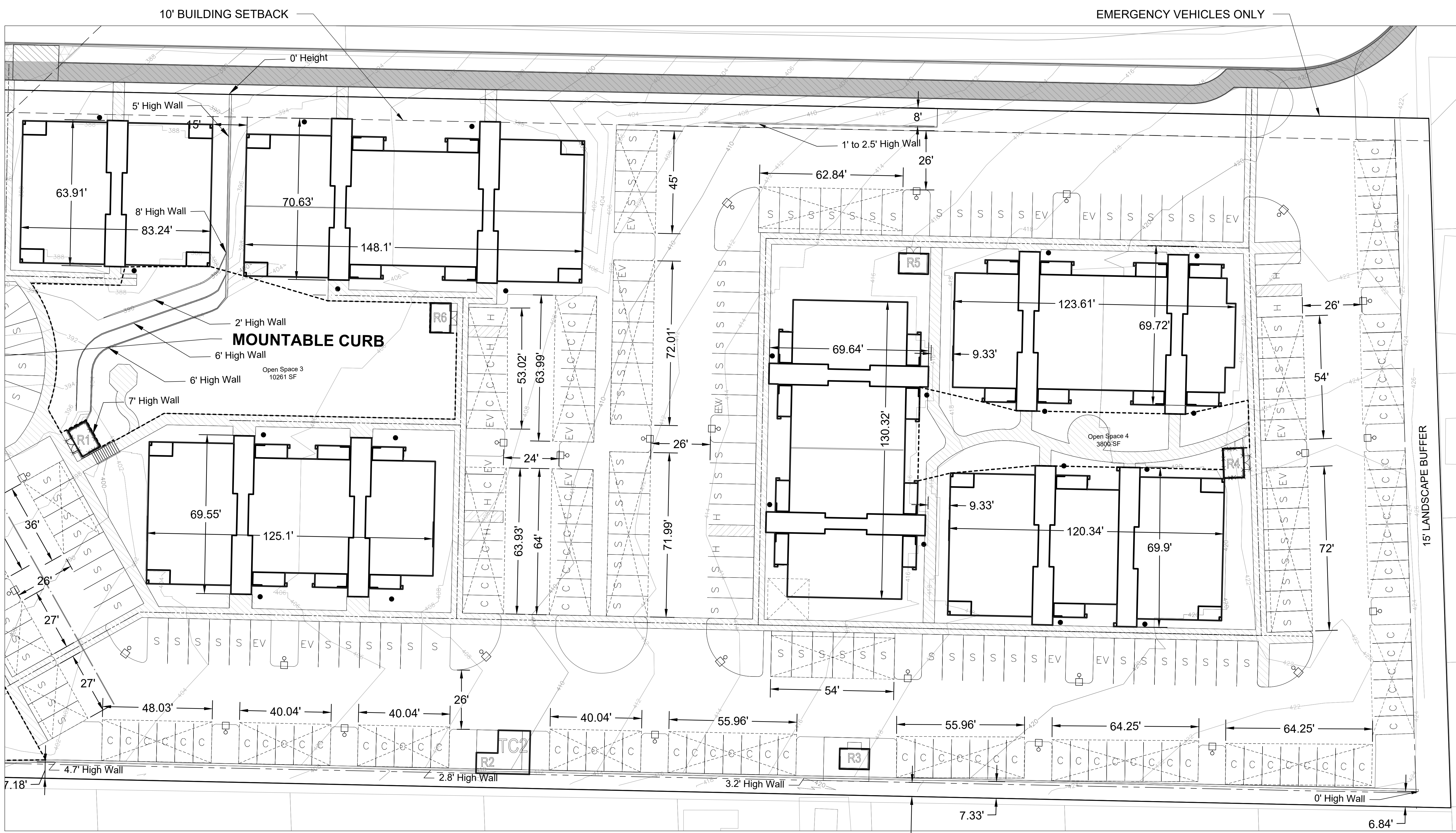


BRADLEY HEIGHTS



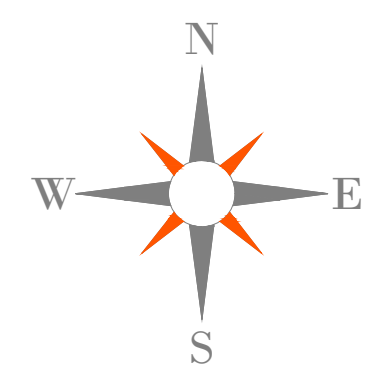
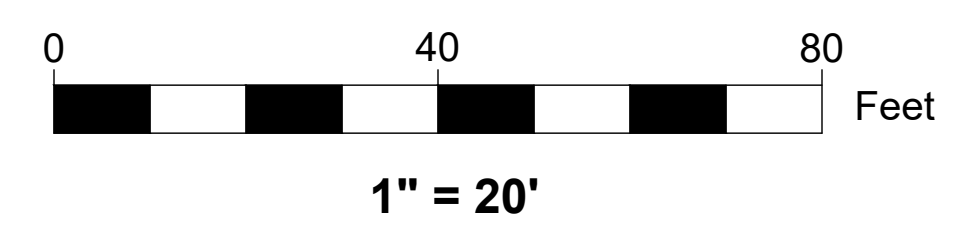
10' BUILDING SETBACK

EMERGENCY VEHICLES ONLY

MOUNTABLE CURB

15' LANDSCAPE BUFFER

6' LANDSCAPE BUFFER



- LIGHTING
- BOLLARD
- LUMINARE



NO.	DATE	REVISION

JOB NO. 2527
 DRAWN BY: JRG
 CHECKED BY: JRG
 APPROVED BY: Paul Green

AZURE GREEN
 CONSULTANTS
 + feasibility + planning + engineering + surveying

409 East Pioneer, Suite A - Pullman, WA 99172 Phone: 253.770.3144 Fax: 253.770.3142

BRADLEY HEIGHTS
 Azure Green Consultants
 409 East Pioneer, Pullman, WA 99172
 Phone (253) 770-3144

PROPOSED STRUCTURES DATA

DRAWING
S3
 SHEET
 OF 3

Project Desc: BRADLEY HEIGHTS - BRADLEY HEIGHTS SITE 8-23-2022.dwg Plot Date/Time: 8/23/2022 3:03 PM