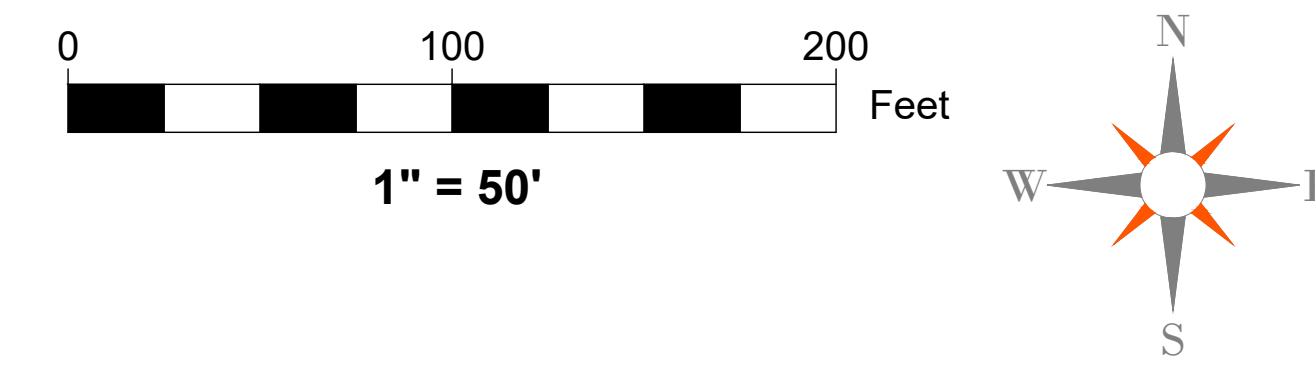
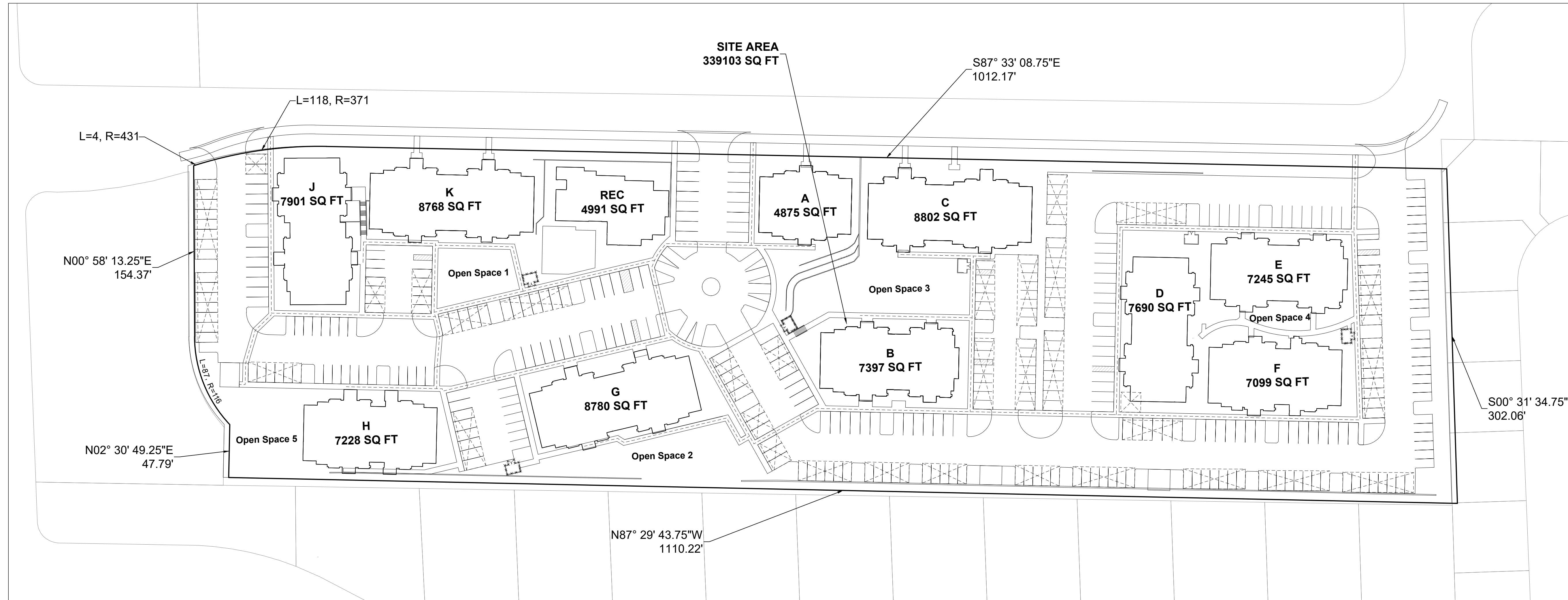


BRADLEY HEIGHTS



NOTES:

- SETBACKS:**
 NORTH: 10' SETBACK TO BUILDINGS
 WEST: 0' BUILDING SETBACK - 6' LANDSCAPE BUFFER
 REAR: 0' BUILDING SETBACK - 6' LANDSCAPE BUFFER
 EAST: 25' BUILDING SETBACK - 15' LANDSCAPE BUFFER

Project Desc: ### IS: Vropbox (A03) \GC_John\2979 - Bradley Heights\SITE 2-23-2022 - site plan.dwg Plot Date/Time: 2/24/2022 12:50 AM



NO.	DATE	REVISION
1		
2		
3		
4		
5		
6		
7		
8		
9		
10		

JOB NO. 2979	DATE 2/24/2022
DRAWN BY: JEC	CHECKED BY: JEC
APPROVED BY: Paul Green	

AZURE GREEN
 CONSULTANTS
 + feasibility + planning + engineering + surveying

409 East Pioneer, Suite A - Puyallup, WA 98372 phone: 253.770.3144 fax: 253.770.3142

SITE PLAN

BRADLEY HEIGHTS
 Azure Green Consultants
 409 East Pioneer, Puyallup, WA 98372
 Phone (253) 770-3144

DRAWING

SHEET OF