

# TACO TIME PUYALLUP

## EAST MAIN STREET PUYALLUP, WA 98372

### PERMIT SET - 2.11.2022

#### PROJECT TEAM

**OWNER**  
TACO TIME NORTHWEST  
3300 MAPLE VALLEY HIGHWAY  
RENTON, WA 98058  
CONTACT: CHRIS TONKIN  
PHONE: 425.226.6656  
FAX: 425.228.8226  
EMAIL: chris@tacotimew.com

**ARCHITECTURAL**  
BCRA, INC  
2106 PACIFIC AVENUE, SUITE 300  
TACOMA, WA 98402  
CONTACT: HEIDI KIHLMAN  
PHONE: 253.627.4367  
EMAIL: HKIHLMAN@BCRADESIGN.COM

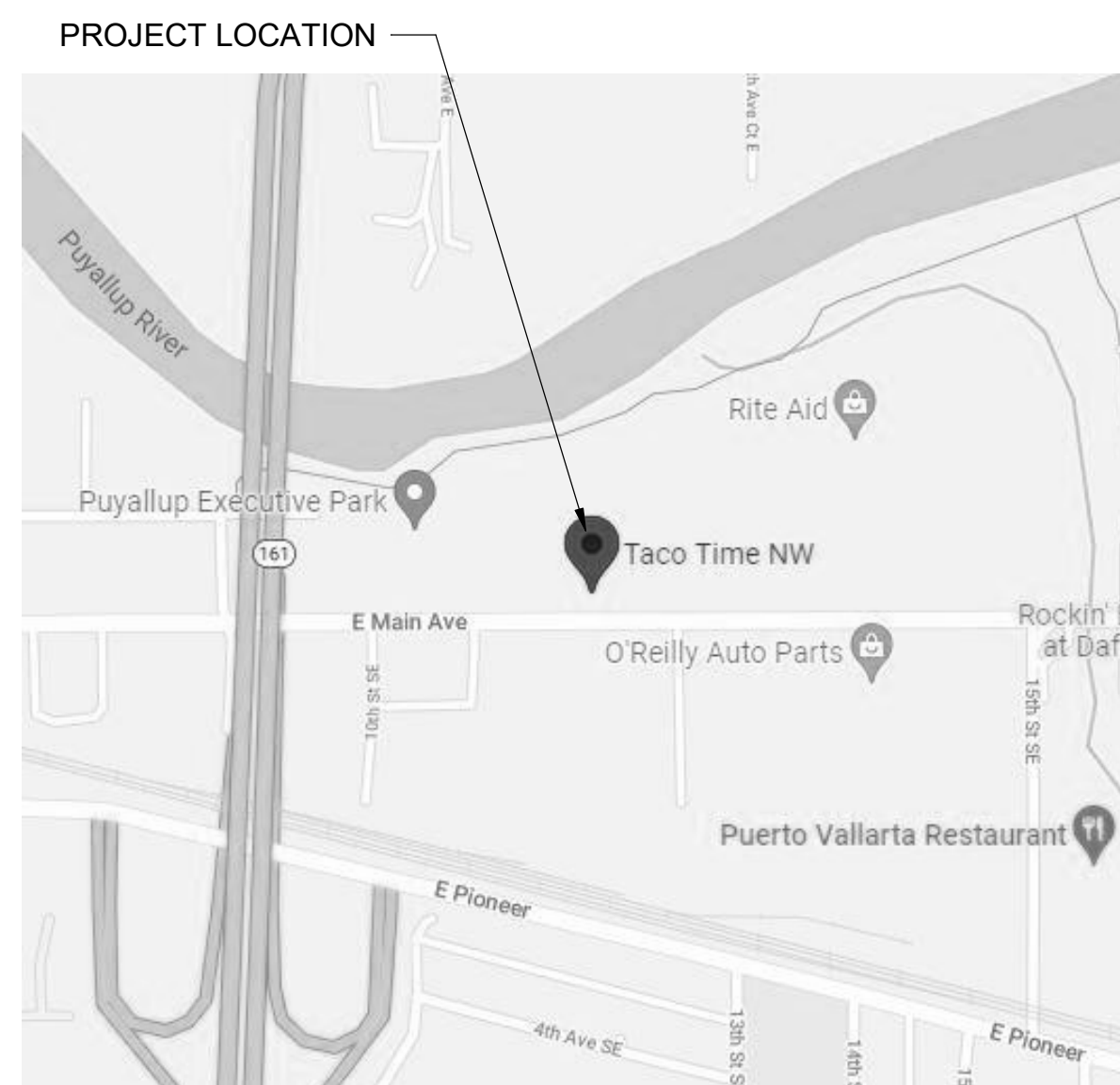
**STRUCTURAL**  
BCRA, INC  
2106 PACIFIC AVENUE, SUITE 300  
TACOMA, WA 98402  
CONTACT: BLAKE JOHNSON  
PHONE: 253.627.4367  
EMAIL: BJOHNSON@BCRADESIGN.COM

**CIVIL**  
AZURE GREEN  
2106 PACIFIC AVENUE, SUITE 300  
TACOMA, WA 98402  
CONTACT: BLAKE JOHNSON  
PHONE: 253.627.4367  
EMAIL: BJOHNSON@BCRADESIGN.COM

#### LANDSCAPE

2106 PACIFIC AVENUE, SUITE 300  
TACOMA, WA 98402  
CONTACT: BLAKE JOHNSON  
PHONE: 253.627.4367  
EMAIL: BJOHNSON@BCRADESIGN.COM

#### VICINITY MAP



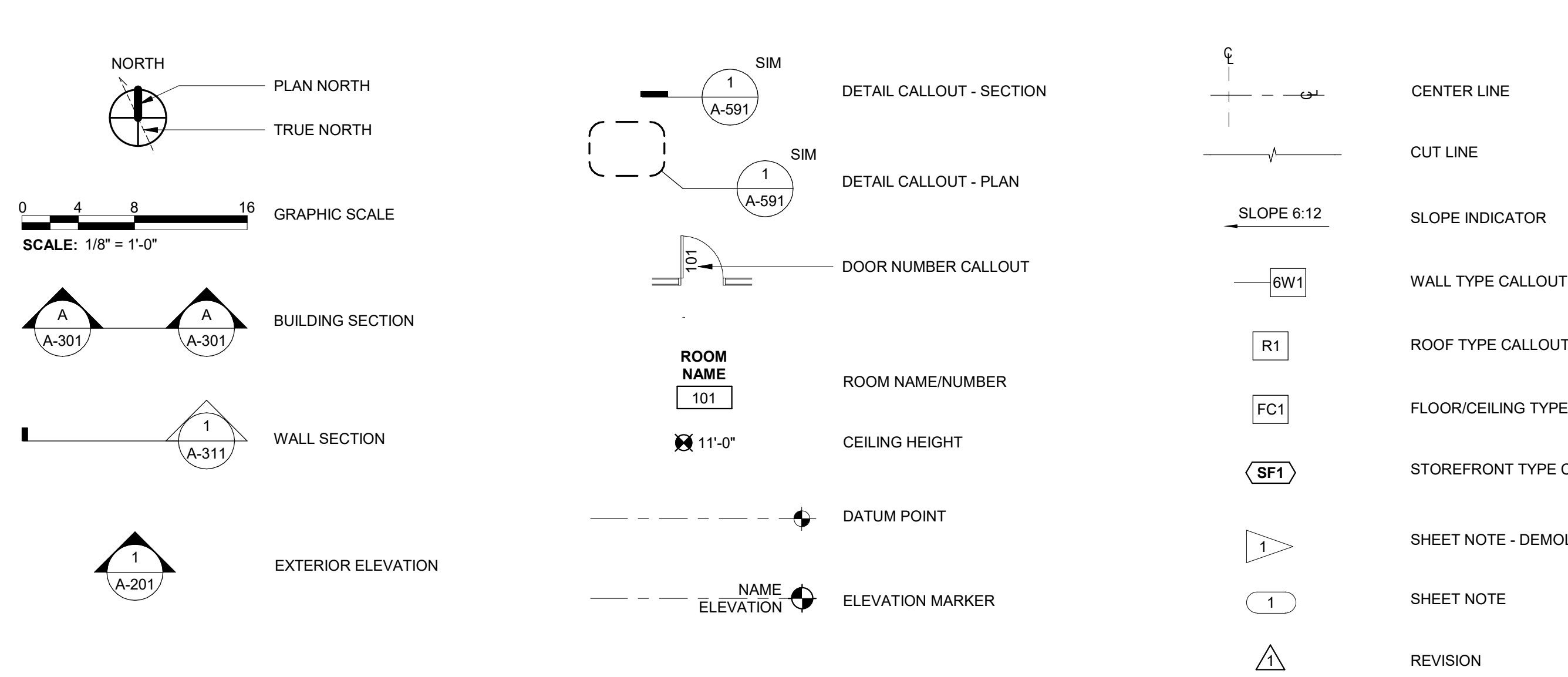
#### PROJECT INFORMATION

DESCRIPTION	CONSTRUCTION OF NEW TACO TIME WITH DRIVE THRU ON EXISTING SITE.
SITE ADDRESS	EAST MAIN STREET PUYALLUP, WA 98372
LEGAL DESCRIPTION	Section 27 Township 20 Range 04 Quarter 13 SPINNINGS FRANK R REPLAT PARCEL '2' OF DBLR 2003-05-28-5004 DESC AS FOLL S 163.57 FT OF E 124.06 FT OF L 4 & S 163.57 FT OF W 93.01 FT OF L 5 SUBJ TO & TOG/W EASE, RESTRICT & RESERV OF REC OUT OF 003-1, 0 RTSQQ.
PARCEL NUMBERS	7845100032
ZONING	CG
JURISDICTION	CITY OF PUYALLUP
PROJECT SITE AREA	0.82 ACRES
UTILITY PURVEYORS	SEWER: WATER: ELECTRIC: GAS:
CODES UTILIZED	2018 INTERNATIONAL EXISTING BUILDING CODE W WAC AMMENDMENTS 2018 UNIFORM PLUMBING CODE 2018 INTERNATIONAL MECHANICAL CODE 2018 INTERNATIONAL FUEL GAS CODE 2018 NATIONAL ELECTRIC CODE 2018 INTERNATIONAL ENERGY CONSERVATION CODE W/ WAC AMMENDMENTS CITY OF PUYALLUP
USE	COMMERCIAL
OCCUPANCY TYPE	A-2 ASSEMBLY
CONSTRUCTION TYPE	VB
SPRINKLERED	NO
NUMBER OF STORIES	1
BUILDING HEIGHT	23'-0" HEIGHT (40'-0" ALLOWED)
BUILDING AREA	2,975 SF (6,000 SF ALLOWED)

#### AIR BARRIER COMPLIANCE

- PERFORMANCE OF BUILDING AIR BARRIER COMPONENTS SHALL MEET THE AIR LEAKAGE REQUIREMENTS OF THE 2018 WSEC SECTION C402.4. THE BUILDING ENVELOPE SHALL BE TESTED ACCORDING TO THE REQUIREMENTS OF WSEC C402.5.1.2 AND AIR LEAKAGE SHALL NOT EXCEED 0.25 CFM/FT AT A PRESSURE DIFFERENTIAL OF 0.3" WATER GAUGE. A REPORT INCLUDING TESTED SURFACE AREA, FLOOR AREA, AIR BY VOLUME, STORIES ABOVE GRADE, AND AIR LEAKAGE RATES SHALL BE SUBMITTED TO THE BUILDING OWNER AND TO THE BUILDING OFFICIAL.
- INSTALL CONTINUOUS AIR BARRIER SYSTEM OVER THE ENTIRE EXTERIOR ENVELOPE (ROOFS, WALLS, AND FLOOR) SEPARATING THE INTERIOR CONDITIONED AIR FROM THE EXTERIOR UNCONDITIONED AIR WITH AN AIR LEAKAGE RATE NOT EXCEEDING 0.25 CFM/SF TO EXTERIOR ENVELOPE AREA AT 75 PA OR 0.3 WG. THE CONTINUOUS BUILDING AIR BARRIER SYSTEM INCLUDES AIR TIGHT CONNECTIONS TO ANY PENETRATIONS, WINDOWS, DOORS, LOUVERS, AND BETWEEN ADJACENT DIFFERENT TYPES OF AIR BARRIER FENESTRATIONS SHALL COMPLY WITH C402.5.1.

#### ARCHITECTURAL SYMBOLS



#### PROJECT GENERAL NOTES

- ALL CONSTRUCTION SHALL COMPLY WITH THE 2017 INTERNATIONAL BUILDING CODE, THE AMERICANS WITH DISABILITIES ACT, AND ALL APPLICABLE LOCAL CODES, ORDINANCES, AND STANDARDS.
- DO NOT SCALE DRAWINGS. DIMENSIONS GOVERN. THE CONTRACTOR SHALL NOTIFY ARCHITECT IMMEDIATELY OF ANY DISCREPANCIES.
- WHERE CONSTRUCTION DETAILS ARE NOT SHOWN OR NOTED FOR ANY PART OF THE WORK, THE DETAILS SHALL BE THE SAME AS FOR OTHER SIMILAR WORK. IF QUESTIONS CANNOT BE RESOLVED IN THIS MANNER, CONTACT THE ARCHITECT PRIOR TO PROCEEDING WITH THE WORK.
- AN APPROVED PUBLIC SAFETY KEY BOX SHALL BE INSTALLED ADJACENT THE MAIN ENTRANCE AND SHALL BE CLEARLY VISIBLE, MOUNTED WITHIN SIX FEET OF THE GRADE, AND APPROVED BY THE LOCAL JURISDICTION. THE KEY BOX SHALL CONTAIN KEYS THAT OPERATE THE ELEVATOR RECALL AND EMERGENCY OVERRIDE SYSTEMS. KEYS SHALL BE CLEARLY MARKED AS FOR WHAT DOOR, ROOM, AREA OR LOCK THEY SERVE. THE KEY BOX SHALL CONTAIN KEYS TO OPEN DOORS OR OTHER ACCESS MEANS AT THE FOLLOWING LOCATIONS:
  - THE MAIN ENTRANCE
  - ROOMS CONTAINING CONTROL VALVES FOR AUTOMATIC SPRINKLER SYSTEMS
  - ROOMS CONTAINING FIRE ALARM SYSTEM CONTROL PANELS
  - ROOMS CONTAINING ELEVATOR EQUIPMENT
  - ROOMS CONTAINING MAIN ELECTRICAL SERVICES PANELS
- WHERE DEVICES OR ITEMS OR PARTS THEREOF ARE REFERRED TO IN SINGULAR IT IS INTENDED THAT SUCH SHALL APPLY TO AS MANY SUCH DEVICES, ITEMS OR PARTS AS ARE REQUIRED TO PROPERLY COMPLETE THE WORK.
- FIELD MEASURE AND CONFIRM DIMENSIONS FOR OWNER PROVIDED EQUIPMENT AND FURNISHINGS.
- PROVIDE STIFFENERS, BRACING, BACKING PLATES AND BLOCKING REQUIRED FOR SECURE INSTALLATION OF GRAB BARS, DOORS AND DOOR HARDWARE INCLUDING WALL-MOUNTED DOOR STOPS, HANDRAILS, WALL-MOUNTED SHELVES, MISCELLANEOUS EQUIPMENT, AND SUSPENDED MECHANICAL AND ELECTRICAL EQUIPMENT.
- COORDINATE AND PROVIDE ALL BASE AND HOUSEKEEPING PADS FOR MECHANICAL PLUMBING AND ELECTRICAL EQUIPMENT.
- LOCATE ACCESS DOORS IN ACCORDANCE WITH APPLICABLE CODES. SUBMIT PROPOSED LOCATIONS TO THE ARCHITECT FOR REVIEW AND ACCEPTANCE PRIOR TO INSTALLATION.
- FINISH FLOOR ELEVATIONS ARE TO TOP OF CONCRETE AND TOPPING SLAB UNLESS OTHERWISE NOTED.
- COORDINATE EXACT SIZE AND PLACEMENT OF EQUIPMENT BEING PROVIDED.
- THE CONTRACTOR SHALL PROVIDE TEMPORARY BRACING FOR THE BUILDING STRUCTURE AND STRUCTURAL COMPONENTS UNTIL FINAL CONNECTIONS HAVE BEEN COMPLETED IN ACCORDANCE WITH THE CONSTRUCTION DOCUMENTS.
- FIRE BLOCKING AND SMOKE BARRIERS SHALL BE INSTALLED IN ACCORDANCE WITH 2017 INTERNATIONAL BUILDING CODE.

#### SHEET INDEX

GENERAL	
G-101	COVER
G-102	CODE SUMMARY
G-301	ADA ACCESSIBILITY REQUIREMENTS
ARCHITECTURAL	
A-111	SITE PLAN
A-121	FIRST FLOOR PLAN
A-122	FINISH & EQUIPMENT PLAN
A-123	EQUIPMENT SCHEDULE
A-151	FIRST FLOOR REFLECTED CEILING PLAN
A-161	ROOF PLAN
A-201	EXTERIOR ELEVATIONS
A-211	INTERIOR ELEVATIONS
A-212	INTERIOR ELEVATIONS
A-213	INTERIOR ELEVATIONS
A-301	BUILDING SECTIONS
A-311	WALL SECTIONS
A-312	WALL SECTION
A-351	STOREFRONT DETAILS
A-352	DOOR DETAILS
A-401	ENLARGED FLOOR PLANS
A-541	TYPICAL SEQUENCING OF SHEET-APPLIED AIR / WATER BARRIER SYSTEM AT FLANGELESS WINDOW AND LOUVER OPENINGS
A-542	TYPICAL SEQUENCING OF SHEET-APPLIED AIR / WATER BARRIER SYSTEM AT FLANGELESS WINDOW AND LOUVER OPENINGS
A-551	CEILING DETAILS
A-561	ROOF DETAILS
A-562	ROOF DETAILS
A-591	EXTERIOR WALL DETAILS
A-592	INTERIOR DETAILS
A-593	INTERIOR DETAILS
A-601	INTERIOR FINISH SCHEDULE
A-611	DOOR SCHEDULE
A-621	ASSEMBLY TYPES
STRUCTURAL	
S-101	STRUCTURAL COVER SHEET
S-201	STRUCTURAL SHEET
MECHANICAL	
M-101	MECHANICAL COVER SHEET
M-201	MECHANICAL SHEET
ELECTRICAL	
E-101	ELECTRICAL COVER SHEET
E-102	ELECTRICAL SHEET
PLUMBING	
P-101	PLUMBING COVER SHEET
P-201	PLUMBING SHEET

#### SEPARATE / DEFERRED SUBMITTALS

SEPARATE:	DEFERRED:
CIVIL	
LANDSCAPE	
SIGNAGE	

#### ABBREVIATIONS

AFF	ABOVE FINISHED FLOOR	LL	LANDLORD
B.O.	BOTTOM OF	MAX	MAXIMUM
CG	CORNER GUARD	MDF	MEDIUM DENSITY FIBERBOARD
DS	DOWNSPOUT	MIN	MINIMUM
EQ	EQUAL	O.C.	ON CENTER
FV	FIELD VERIFY	OCC	OCCUPANT / OCCUPANCY
GA	GAUGE	SF	SQUARE FOOT / STOREFRONT
GWB	GYPSUM BOARD	T.O.	TOP OF

PROJECT:  
NEW CONSTRUCTION  
**TACO TIME**  
EAST MAIN STREET  
PUYALLUP, WA 98372

REVISIONS

DATE	1.3.2022
BCRA NO.	19110.00.00
DRAWN BY:	
REVIEWED BY:	
SHEET TITLE	COVER

**CODE SUMMARY**

**CURRENT ADOPTED CODES:**  
2018 INTERNATIONAL BUILDING CODE (IBC) WITH WAC AMMENDMENTS

**303.3 ASSEMBLY GROUP A-2.**  
GROUP A-2 OCCUPANCY INCLUDES ASSEMBLY USES INTENDED FOR FOOD AND/OR DRINK CONSUMPTION INCLUDING, BUT NOT LIMITED TO:  
• BANQUET HALLS  
• CASINOS (GAMING AREAS)  
• NIGHTCLUBS  
• RESTAURANTS, CAFETERIAS AND SIMILAR DINING FACILITIES (INCLUDING ASSOCIATED COMMERCIAL KITCHENS)  
• TAVERNS AND BARS

**MEANS OF EGRESS**

**1004.5 AREAS WITHOUT FIXED SEATING.**  
THE NUMBER OF OCCUPANTS SHALL BE COMPUTED AT THE RATE OF ONE OCCUPANT PER UNIT OF AREA AS PRESCRIBED IN TABLE 1004.5. FOR AREAS WITHOUT FIXED SEATING, THE OCCUPANT LOAD SHALL BE NOT LESS THAN THAT NUMBER DETERMINED BY DIVIDING THE FLOOR AREA UNDER CONSIDERATION BY THE OCCUPANT LOAD FACTOR ASSIGNED TO THE FUNCTION OF THE SPACE AS SET FORTH IN TABLE 1004.5. WHERE AN INTENDED FUNCTION IS NOT LISTED IN TABLE 1004.5, THE BUILDING OFFICIAL SHALL ESTABLISH A FUNCTION BASED ON A LISTED FUNCTION THAT MOST NEARLY RESEMBLES THE INTENDED FUNCTION.

**1004.6 FIXED SEATING.**

FOR AREAS HAVING FIXED SEATS AND AISLES, THE OCCUPANT LOAD SHALL BE DETERMINED BY THE NUMBER OF FIXED SEATS INSTALLED THEREIN. THE OCCUPANT LOAD FOR AREAS IN WHICH FIXED SEATING IS NOT INSTALLED, SUCH AS WAITING SPACES, SHALL BE DETERMINED IN ACCORDANCE WITH SECTION 1004.5 AND ADDED TO THE NUMBER OF FIXED SEATS.  
THE OCCUPANT LOAD OF WHEELCHAIR SPACES AND THE ASSOCIATED COMPANION SEAT SHALL BE BASED ON ONE OCCUPANT FOR EACH WHEELCHAIR SPACE AND ONE OCCUPANT FOR THE ASSOCIATED COMPANION SEAT PROVIDED IN ACCORDANCE WITH SECTION 1108.2.3.  
THE OCCUPANT LOAD OF SEATING BOOTHS SHALL BE BASED ON ONE PERSON FOR EACH 24 INCHES (610 MM) OF BOOTH SEAT LENGTH MEASURED AT THE BACKREST OF THE SEATING BOOTH.

**1004.9 POSTING OF OCCUPANT LOAD.**

EVERY ROOM OR SPACE THAT IS AN ASSEMBLY OCCUPANCY SHALL HAVE THE OCCUPANT LOAD OF THE ROOM OR SPACE POSTED IN A CONSPICUOUS PLACE, NEAR THE MAIN EXIT OR EXIT ACCESS DOORWAY FROM THE ROOM OR SPACE, FOR THE INTENDED CONFIGURATIONS. POSTED SIGNS SHALL BE OF AN APPROVED LEGIBLE PERMANENT DESIGN AND SHALL BE MAINTAINED BY THE OWNER OR THE OWNER'S AUTHORIZED AGENT.

**1005.3.2 OTHER EGRESS COMPONENTS.**

THE CAPACITY, IN INCHES, OF MEANS OF EGRESS COMPONENTS OTHER THAN STAIRWAYS SHALL BE CALCULATED BY MULTIPLYING THE OCCUPANT LOAD SERVED BY SUCH COMPONENT BY A MEANS OF EGRESS CAPACITY FACTOR OF 0.2 INCH (5.1 MM) PER OCCUPANT.

**1005.5 DISTRIBUTION OF MINIMUM WIDTH AND REQUIRED CAPACITY.**

WHERE MORE THAN ONE EXIT, OR ACCESS TO MORE THAN ONE EXIT, IS REQUIRED, THE MEANS OF EGRESS SHALL BE CONFIGURED SUCH THAT THE LOSS OF ANY ONE EXIT, OR ACCESS TO ONE EXIT, SHALL NOT REDUCE THE AVAILABLE CAPACITY OR WIDTH TO LESS THAN 50 PERCENT OF THE REQUIRED CAPACITY OR WIDTH.

**1006.2.1 EGRESS BASED ON OCCUPANT LOAD AND COMMON PATH OF EGRESS TRAVEL DISTANCE.**

TWO EXITS OR EXIT ACCESS DOORWAYS FROM ANY SPACE SHALL BE PROVIDED WHERE THE DESIGN OCCUPANT LOAD OR THE COMMON PATH OF EGRESS TRAVEL DISTANCE EXCEEDS THE VALUES LISTED IN TABLE 1006.2.1. THE CUMULATIVE OCCUPANT LOAD FROM ADJACENT ROOMS, AREAS OR SPACES SHALL BE DETERMINED IN ACCORDANCE WITH SECTION 1004.2

**1007.1.1 TWO EXITS OR EXIT ACCESS DOORWAYS.**

WHERE TWO EXITS, EXIT ACCESS DOORWAYS, EXIT ACCESS STAIRWAYS OR RAMPS, OR ANY COMBINATION THEREOF, ARE REQUIRED FROM ANY PORTION OF THE EXIT ACCESS, THEY SHALL BE PLACED A DISTANCE APART EQUAL TO NOT LESS THAN ONE-HALF OF THE LENGTH OF THE MAXIMUM OVERALL DIAGONAL DIMENSION OF THE BUILDING OR AREA TO BE SERVED MEASURED IN A STRAIGHT LINE BETWEEN THEM. INTERLOCKING OR SCISSOR STAIRWAYS SHALL BE COUNTED AS ONE EXIT STAIRWAY.

**EXCEPTIONS:**

2. WHERE A BUILDING IS EQUIPPED THROUGHOUT WITH AN AUTOMATIC SPRINKLER SYSTEM IN ACCORDANCE WITH SECTION 903.3.1.1 OR 903.3.1.2, THE SEPARATION DISTANCE SHALL BE NOT LESS THAN ONE-THIRD OF THE LENGTH OF THE MAXIMUM OVERALL DIAGONAL DIMENSION OF THE AREA SERVED.

**1007.1.1.1 MEASUREMENT POINT.**

THE SEPARATION DISTANCE REQUIRED IN SECTION 1007.1.1 SHALL BE MEASURED IN ACCORDANCE WITH THE FOLLOWING:  
1. THE SEPARATION DISTANCE TO EXIT OR EXIT ACCESS DOORWAYS SHALL BE MEASURED TO ANY POINT ALONG THE WIDTH OF THE DOORWAY.  
2. THE SEPARATION DISTANCE TO EXIT ACCESS STAIRWAYS SHALL BE MEASURED TO THE CLOSEST RISER.  
3. THE SEPARATION DISTANCE TO EXIT ACCESS RAMPS SHALL BE MEASURED TO THE START OF THE RAMP RUN.

**DOORS, GATES, AND TURNSTILES**

**1010.1.9 DOOR OPERATIONS.**

EXCEPT AS SPECIFICALLY PERMITTED BY THIS SECTION, EGRESS DOORS SHALL BE READILY OPENABLE FROM THE EGRESS SIDE WITHOUT THE USE OF A KEY OR SPECIAL KNOWLEDGE OR EFFORT.

**1010.1.9.1 HARDWARE.**

DOOR HANDLES, PULLS, LATCHES, LOCKS AND OTHER OPERATING DEVICES ON DOORS REQUIRED TO BE ACCESSIBLE BY CHAPTER 11 SHALL NOT REQUIRE TIGHT GRASPING, TIGHT PINCHING OR TWISTING OF THE WRIST TO OPERATE.

**1010.1.9.2 HARDWARE HEIGHT.**

DOOR HANDLES, PULLS, LATCHES, LOCKS AND OTHER OPERATING DEVICES SHALL BE INSTALLED 34 INCHES MINIMUM AND 48 INCHES MAXIMUM ABOVE THE FINISHED FLOOR. LOCKS USED ONLY FOR SECURITY PURPOSES AND NOT USED FOR NORMAL OPERATION ARE PERMITTED AT ANY HEIGHT.

**1010.1.9.4 LOCKS AND LATCHES**

LOCKS AND LATCHES SHALL BE PERMITTED TO PREVENT OPERATION OF DOORS WHERE ANY OF THE FOLLOWING EXIST:  
2. IN BUILDINGS IN OCCUPANCY GROUP A HAVING AN OCCUPANT LOAD OF 300 OR LESS, GROUPS B, F, M AND S, AND IN PLACES OF RELIGIOUS WORSHIP, THE MAIN DOOR OR DOORS ARE PERMITTED TO BE EQUIPPED WITH KEY-OPERATED LOCKING DEVICES FROM THE EGRESS SIDE PROVIDED:  
2.1. THE LOCKING DEVICE IS READILY DISTINGUISHABLE AS LOCKED.  
2.2. A READILY VISIBLY DURABLE SIGN IS POSTED ON THE EGRESS SIDE ON OR ADJACENT TO THE DOOR STATING: "THIS DOOR TO REMAIN UNLOCKED WHEN THIS SPACE IS OCCUPIED". THIS SIGN SHALL BE IN LETTERS 1 INCH HIGH ON A CONTRASTING BACKGROUND.  
2.3. THE USE OF THE KEY-OPERATED LOCKING DEVICE IS REVOCABLE BY THE BUILDING OFFICIAL FOR DUE CAUSE.  
3. WHERE EGRESS DOORS ARE USED IN PAIRS, APPROVED AUTOMATIC FLUSH BOLTS SHALL BE PERMITTED TO BE USED, PROVIDED THAT THE DOOR LEAF HAVING THE AUTOMATIC FLUSH BOLTS DOES NOT HAVE A DOORKNOB OR SURFACE-MOUNTED HARDWARE.

**EXIT SIGNS**

**1013.1 WHERE REQUIRED.**

EXITS AND EXIT ACCESS DOORS SHALL BE MARKED BY AN APPROVED EXIT SIGN READILY VISIBLE FROM ANY DIRECTION OF EGRESS TRAVEL. THE PATH OF EGRESS TRAVEL TO EXITS AND WITHIN EXITS SHALL BE MARKED BY READILY VISIBLE EXIT SIGNS TO CLEARLY INDICATE THE DIRECTION OF EGRESS TRAVEL IN CASES WHERE THE EXIT OR THE PATH OF EGRESS TRAVEL IS NOT IMMEDIATELY VISIBLE TO THE OCCUPANTS. INTERVENING MEANS OF EGRESS DOORS WITHIN EXITS SHALL BE MARKED BY EXIT SIGNS. EXIT SIGN PLACEMENT SHALL BE SUCH THAT NO POINT IN AN EXIT ACCESS CORRIDOR OR EXIT PASSAGEWAY IS MORE THAN 100 FEET OR THE LISTED VIEWING DISTANCE FOR THE SIGN, WHICHEVER IS LESS, FROM THE NEAREST VISIBLE EXIT SIGN.

**EXCEPTIONS:**

2. MAIN EXTERIOR EXIT DOORS OR GATES THAT ARE OBVIOUSLY AND CLEARLY IDENTIFIABLE AS EXITS NEED NOT HAVE EXIT SIGNS WHERE APPROVED BY THE BUILDING OFFICIAL.

**1013.3 ILLUMINATION.**

EXIT SIGNS SHALL BE INTERNALLY OR EXTERNALLY ILLUMINATED

**EXCEPTION:**

1. TACTILE SIGNS REQUIRED BY SECTION 1013.4 NEED NOT BE PROVIDED WITH ILLUMINATION.

**1013.4 RAISED CHARACTER AND BRAILLE EXIT SIGNS.**

A SIGN STATING EXIT IN VISUAL CHARACTERS, RAISED CHARACTERS AND BRAILLE AND COMPLYING WITH ICC A117.1 SHALL BE PROVIDED ADJACENT TO EACH DOOR TO AN AREA OF REFUGE, PROVIDING DIRECT ACCESS TO A STAIRWAY, AN EXTERIOR AREA FOR ASSISTED RESCUE, AN EXIT STAIRWAY OR RAMP, AN EXIT PASSAGEWAY AND THE EXIT DISCHARGE.

**1017.2 LIMITATIONS.**

EXIT ACCESS TRAVEL DISTANCE SHALL NOT EXCEED THE VALUES GIVEN IN TABLE 1017.2.

**1017.3 MEASUREMENT.**

EXIT ACCESS TRAVEL DISTANCE SHALL BE MEASURED FROM THE MOST REMOTE POINT OF EACH ROOM, AREA OR SPACE ALONG THE NATURAL AND UNOBSTRUCTED PATH OF HORIZONTAL AND VERTICAL EGRESS TRAVEL TO THE ENTRANCE TO AN EXIT.

**1029.7 TRAVEL DISTANCE.**

THE EXIT ACCESS TRAVEL DISTANCE SHALL COMPLY WITH SECTION 1017. WHERE AISLES ARE PROVIDED FOR SEATING, THE DISTANCE SHALL BE MEASURED ALONG THE AISLES AND AISLE ACCESSWAYS WITHOUT TRAVEL OVER OR ON THE SEATS.

**1029.13.1 SEATING AT TABLES.**

WHERE SEATING IS LOCATED AT A TABLE OR COUNTER AND IS ADJACENT TO AN AISLE OR AISLE ACCESSWAY, THE MEASUREMENT OF REQUIRED CLEAR WIDTH OF THE AISLE OR AISLE ACCESSWAY SHALL BE MADE TO A LINE 19 INCHES (483 MM) AWAY FROM AND PARALLEL TO THE EDGE OF THE TABLE OR COUNTER. THE 19-INCH (483 MM) DISTANCE SHALL BE MEASURED PERPENDICULAR TO THE SIDE OF THE TABLE OR COUNTER. IN THE CASE OF OTHER BOUNDARIES FOR AISLES OR AISLE ACCESSWAYS, THE CLEAR WIDTH SHALL BE MEASURED TO WALLS, EDGES OF SEATING AND TREAD EDGES.

**EXCEPTION:**

WHERE TABLES OR COUNTERS ARE SERVED BY FIXED SEATS, THE WIDTH OF THE AISLE OR AISLE ACCESSWAY SHALL BE MEASURED FROM THE BACK OF THE SEAT.

**1029.13.1.1 AISLE ACCESSWAY CAPACITY AND WIDTH FOR SEATING AT TABLES.**

AISLE ACCESSWAYS SERVING ARRANGEMENTS OF SEATING AT TABLES OR COUNTERS SHALL COMPLY WITH THE CAPACITY REQUIREMENTS OF SECTION 1005.1 BUT SHALL NOT HAVE LESS THAN 12 INCHES (305 MM) OF WIDTH PLUS 1/2 INCH (12.7 MM) OF WIDTH FOR EACH ADDITIONAL 1 FOOT (305 MM), OR FRACTION THEREOF, BEYOND 12 FEET (3685 MM) OF AISLE ACCESSWAY LENGTH MEASURED FROM THE CENTER OF THE SEAT FARTHEST FROM AN AISLE.

**EXCEPTION:**

PORTIONS OF AN AISLE ACCESSWAY HAVING A LENGTH NOT EXCEEDING 6 FEET (1829 MM) AND USED BY A TOTAL OF NOT MORE THAN FOUR PERSONS.

**1103.2.2 EMPLOYEE WORK AREAS.**

SPACES AND ELEMENTS WITHIN EMPLOYEE WORK AREAS SHALL ONLY BE REQUIRED TO COMPLY WITH SECTIONS 907.5.2.3.2, 1007 AND 1104.3.1 AND SHALL BE DESIGNED AND CONSTRUCTED SO THAT INDIVIDUALS WITH DISABILITIES CAN APPROACH, ENTER AND EXIT THE WORK AREA. WORK AREAS, OR PORTIONS OF WORK AREAS, OTHER THAN RAISED COURTROOM STATIONS IN ACCORDANCE WITH SECTION 1108.4.1.4, THAT ARE LESS THAN 300 SQUARE FEET (30 M<sup>2</sup>) IN AREA AND LOCATED 7 INCHES (178 MM) OR MORE ABOVE OR BELOW THE GROUND OR FINISHED FLOOR WHERE THE CHANGE IN ELEVATION IS ESSENTIAL TO THE FUNCTION OF THE SPACE SHALL BE EXEMPT FROM ALL REQUIREMENTS.

**1108.2.1 SERVICES.**

IF A SERVICE OR FACILITY IS PROVIDED IN AN AREA THAT IS NOT ACCESSIBLE, THE SAME SERVICE OR FACILITY SHALL BE PROVIDED ON AN ACCESSIBLE LEVEL AND SHALL BE ACCESSIBLE.

**1108.2.2.1 GENERAL SEATING.**

WHEELCHAIR SPACES SHALL BE PROVIDED IN ACCORDANCE WITH TABLE 1108.2.2.1.

**1108.2.3 COMPANION SEATS.**

AT LEAST ONE COMPANION SEAT SHALL BE PROVIDED FOR EACH WHEELCHAIR SPACE REQUIRED BY SECTIONS 1108.2.2.1 THROUGH 1108.2.2.3.

**1108.2.9 DINING AND DRINKING AREAS.**

IN DINING AND DRINKING AREAS, ALL INTERIOR AND EXTERIOR FLOOR AREAS SHALL BE ACCESSIBLE AND BE ON AN ACCESSIBLE ROUTE.

**1108.2.9.1 DINING SURFACES.**

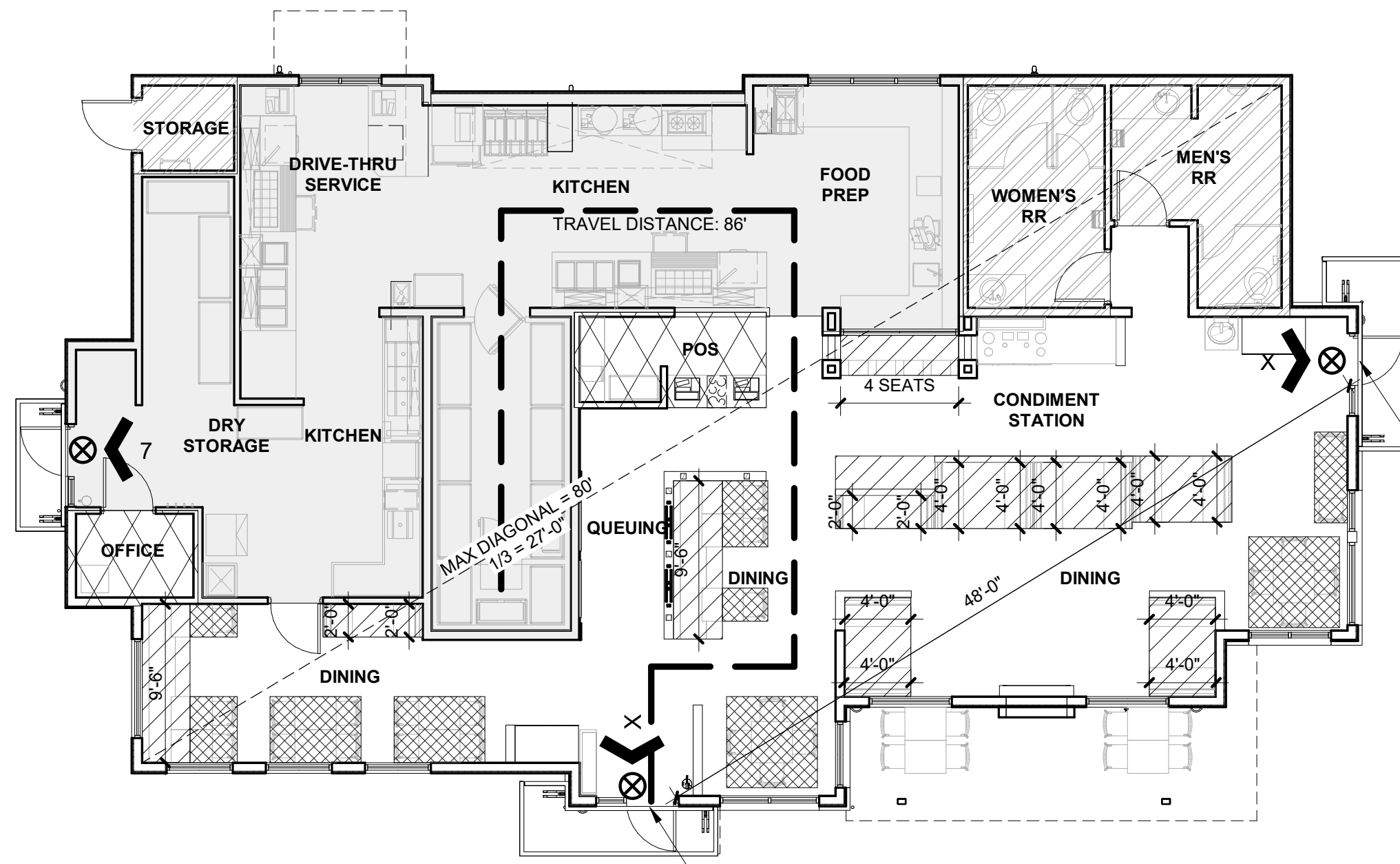
WHERE DINING SURFACES FOR THE CONSUMPTION OF FOOD OR DRINK ARE PROVIDED, AT LEAST 5 PERCENT, BUT NOT LESS THAN ONE, OF THE DINING SURFACES FOR THE SEATING AND STANDING SPACES SHALL BE ACCESSIBLE AND BE DISTRIBUTED THROUGHOUT THE FACILITY AND LOCATED ON A LEVEL ACCESSED BY AN ACCESSIBLE ROUTE.

**[P] 2902.1 MINIMUM NUMBER OF FIXTURES.**

PLUMBING FIXTURES SHALL BE PROVIDED IN THE MINIMUM NUMBER AS SHOWN IN TABLE 2902.1 BASED ON THE ACTUAL USE OF THE BUILDING OR SPACE. USES NOT SHOWN IN TABLE 2902.1 SHALL BE CONSIDERED INDIVIDUALLY BY THE CODE OFFICIAL. THE NUMBER OF OCCUPANTS SHALL BE DETERMINED BY THIS CODE.

**[P] 2902.1.1 FIXTURE CALCULATIONS.**

TO DETERMINE THE OCCUPANT LOAD OF EACH SEX, THE TOTAL OCCUPANT LOAD SHALL BE DIVIDED IN HALF. TO DETERMINE THE REQUIRED NUMBER OF FIXTURES, THE FIXTURE RATIO OR RATIOS FOR EACH FIXTURE TYPE SHALL BE APPLIED TO THE OCCUPANT LOAD OF EACH SEX IN ACCORDANCE WITH TABLE 2902.1 FRACTIONAL NUMBERS RESULTING FROM APPLYING THE FIXTURE RATIOS OF TABLE 2902.1 SHALL BE ROUNDED UP TO THE NEXT WHOLE NUMBER. FOR CALCULATIONS INVOLVING MULTIPLE OCCUPANCIES, SUCH FRACTIONAL NUMBERS FOR EACH OCCUPANCY SHALL FIRST BE SUMMED AND THEN ROUNDED UP TO THE NEXT WHOLE NUMBER.



**MAXIMUM EXIT WIDTH REQUIRED**  
30 OCCUPANTS X 0.2' = 6"  
**EXIT WIDTH PROVIDED**  
32"

**MAXIMUM EXIT WIDTH REQUIRED**  
30 OCCUPANTS X 0.2' = 6"  
**EXIT WIDTH PROVIDED**  
32"

**LIFE SAFETY LEGEND**

- BUSINESS  
150 GROSS
- COMMERCIAL KITCHEN  
200 GROSS
- NON-FIXED SEATING (UNCONCENTRATED)  
15 NET
- FIXED SEATING (BOOTH/COUNTER SEATING)  
1 OCC/24" LF (BOOTH) 1 OCC/SEAT (COUNTER)
- STORAGE OR ACCESSORY  
300 GROSS
- XX  
EXIT OCCUPANT LOAD - BUILDING
- ⊗  
EXIT LIGHT  
- REFER ALSO TO ELECTRICAL
- >  
TRAVEL DISTANCE PATH
- >  
TRAVEL DISTANCE
- 30"x48" ADA CLEARANCE

**BUILDING CODE OCCUPANCY**

BUILDING SQUARE FOOTAGE:	2,975 SF
OCCUPANCY CALC (PER IBC TABLE 1004.5)	
BUSINESS	112 SF / 150 = 1 OCC
COMMERCIAL KITCHEN	1,182 SF / 200 = 6 OCC
INTERIOR DINING (NON-FIXED SEATING)	149 SF / 15 = 10 OCC
INTERIOR DINING - BOOTH (FIXED SEATING)	73 LF / 2 = 37 OCC
INTERIOR DINING - COUNTER (SEAT COUNT)	= 4 OCC
RESTROOMS + STORAGE	296 SF / 300 = 2 OCC
<b>TOTAL INTERIOR OCCUPANT LOAD</b>	<b>= 60 OCC</b>
<b>PLUMBING FIXTURE OCCUPANT LOAD</b>	<b>60 BUILDING OCC</b>
<b>PLUMBING REQUIRED PER 2902.1:</b>	<b>PROVIDED:</b>
30 MALE OCC = 1 WATER CLOSET	1 WATER CLOSET
	1 URINAL
= 1 LAVATORY	1 LAVATORY
30 FEMALE OCC = 1 WATER CLOSET	2 WATER CLOSETS
= 1 LAVATORY	1 LAVATORY

**1 LIFE SAFETY PLAN**  
1/8" = 1'-0"



T 253.627.4367 F 253.627.4395 WWW.BCRADESIGN.COM  
2108 PACIFIC AVENUE, SUITE 300, TACOMA, WA 98402

PROJECT:  
NEW CONSTRUCTION  
**TACO TIME**  
EAST MAIN STREET  
PUYALLUP, WA 98372

REVISIONS

DATE	1.3.2022
BCRA NO.	19110.00.00
DRAWN BY:	
REVIEWED BY:	
SHEET TITLE	CODE SUMMARY



© COPYRIGHT 2019 - BCRA, INC. ALL RIGHTS RESERVED.  
SHEET

**G-102**

PERMIT SET

