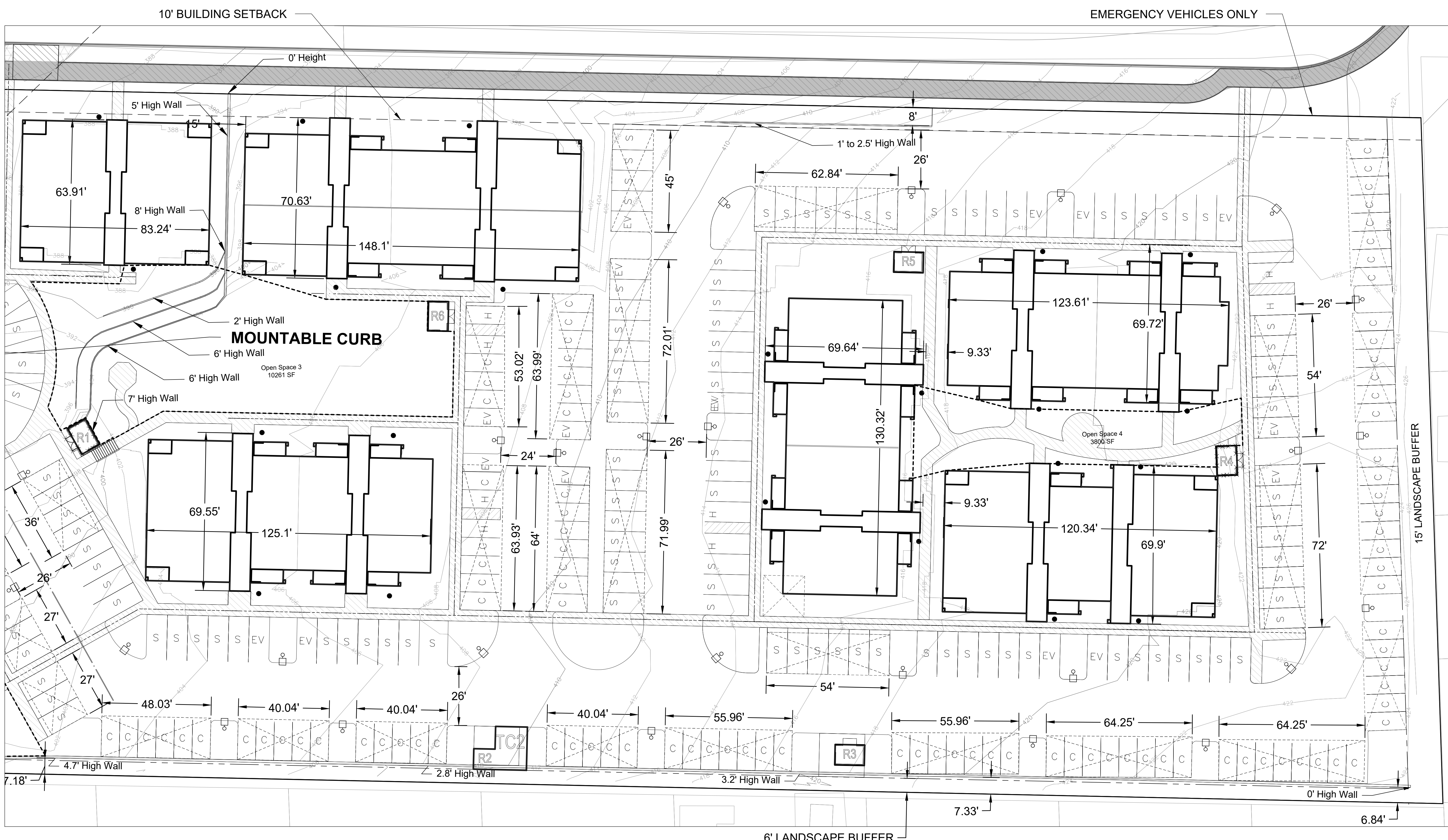


BRADLEY HEIGHTS



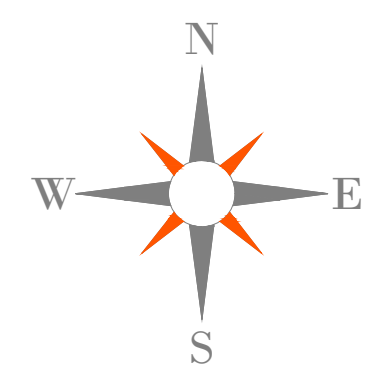
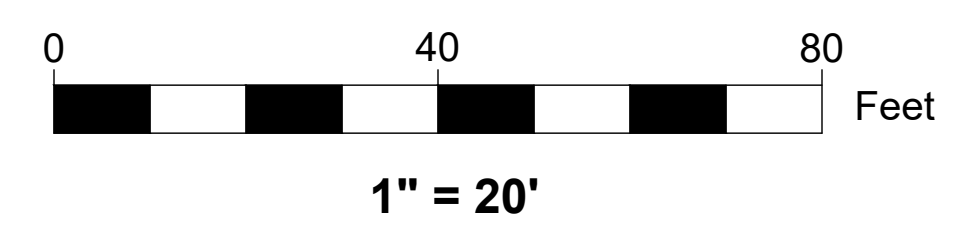
10' BUILDING SETBACK

EMERGENCY VEHICLES ONLY

MOUNTABLE CURB

15' LANDSCAPE BUFFER

6' LANDSCAPE BUFFER



- LIGHTING
- BOLLARD
- LUMINARE



| NO. | DATE | REVISION |
|-----|------|----------|
| 1 | | |
| 2 | | |
| 3 | | |
| 4 | | |
| 5 | | |
| 6 | | |
| 7 | | |
| 8 | | |
| 9 | | |
| 10 | | |

| | |
|------------------|-----------------|
| JOB NO. 2527 | DATE 8/23/2022 |
| DRAWN BY: JEC | CHECKED BY: JEC |
| APPROVED BY: PEG | DATE 8/23/2022 |

AZURE GREEN
CONSULTANTS
+ feasibility + planning + engineering + surveying
409 East Pioneer, Suite A - Pullman, WA 99172 Phone: 253.770.3144 Fax: 253.770.3142

BRADLEY HEIGHTS
Azure Green Consultants
409 East Pioneer, Pullman, WA 99172
Phone (253) 770-3144

DRAWING
S3
SHEET 3
OF 3

Project Desc: BRADLEY HEIGHTS - BRADLEY HEIGHTS SITE PLAN - 8/23/2022.dwg