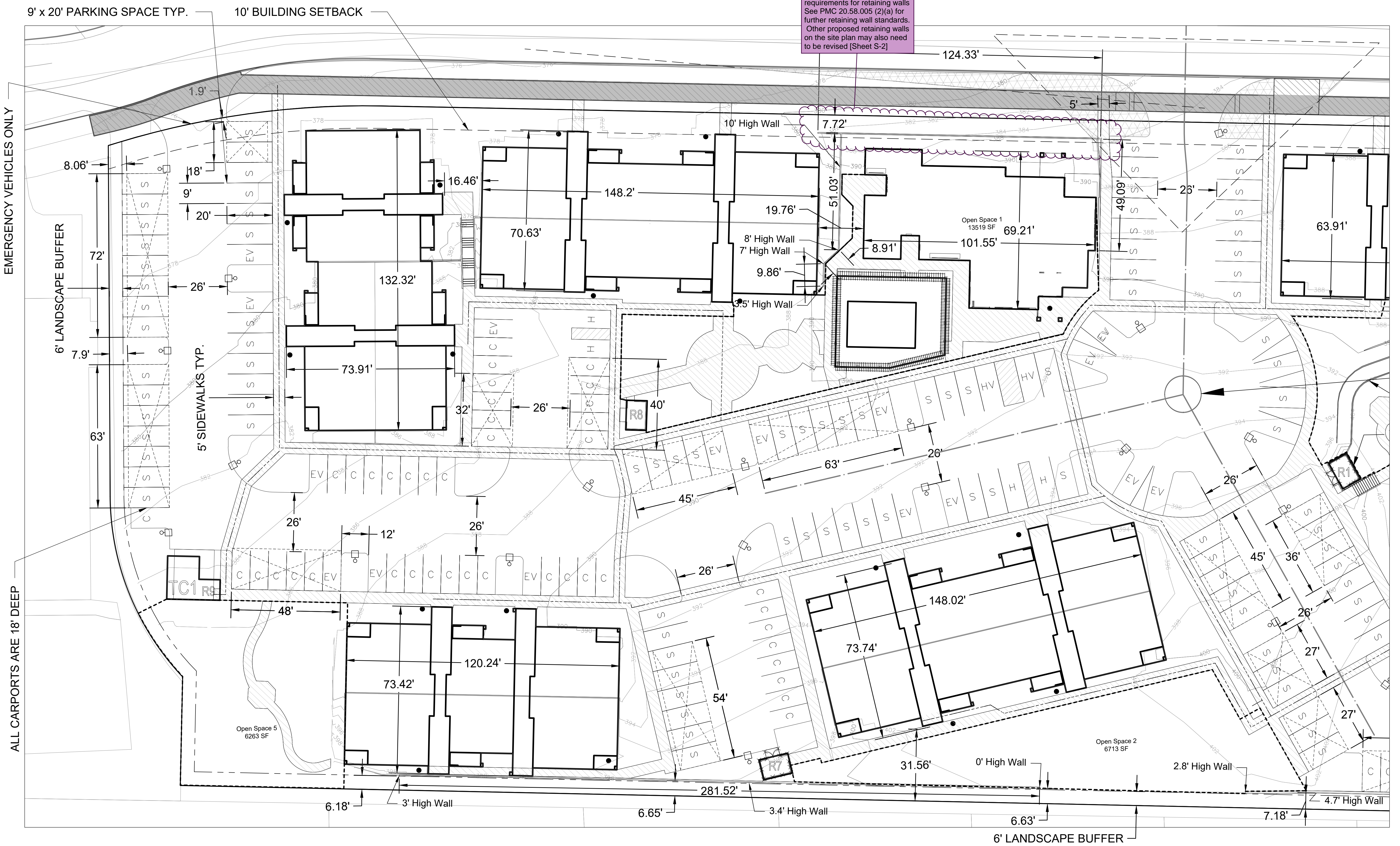


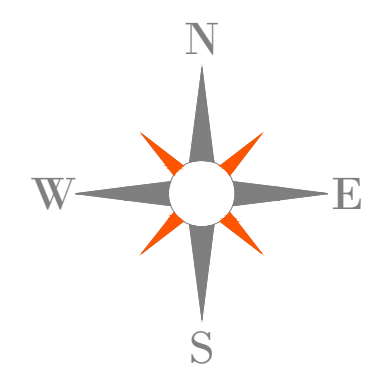
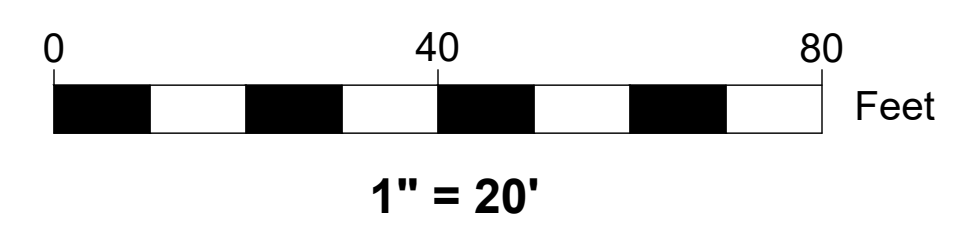
BRADLEY HEIGHTS

Retaining wall at recreation center does not meet 8 ft setback requirement, 3.5 ft height limit, or stepback requirements for retaining walls. See PMC 20.58.005 (2)(a) for further retaining wall standards. Other proposed retaining walls on the site plan may also need to be revised [Sheet S-2]



EMERGENCY VEHICLES ONLY

ALL CARPORTS ARE 18' DEEP



- LIGHTING
- BOLLARD ●
- LUMINARE □



NO.	DATE	REVISION
1		
2		
3		
4		
5		
6		
7		
8		
9		
10		

JOB NO. 2527	DATE 8/23/22
DRAWN BY: JAC	CHECKED BY: JAC
APPROVED BY: JAC	APPROVED BY: JAC

AZURE GREEN
CONSULTANTS
+ feasibility + planning + engineering + surveying

409 East Pioneer, Suite A - Puyallup, WA 98372 Phone: 253.770.3144 Fax: 253.770.3142

PROPOSED STRUCTURES DATA

BRADLEY HEIGHTS
Azure Green Consultants
409 East Pioneer, Puyallup, WA 98372
Phone (253) 770-3144

Project Desc: ### C:\Users\jgreen\OneDrive\Documents\Bradley Heights\Site 8-23-2022.dwg Plot Date/Time: 8/23/2022 3:03 PM