



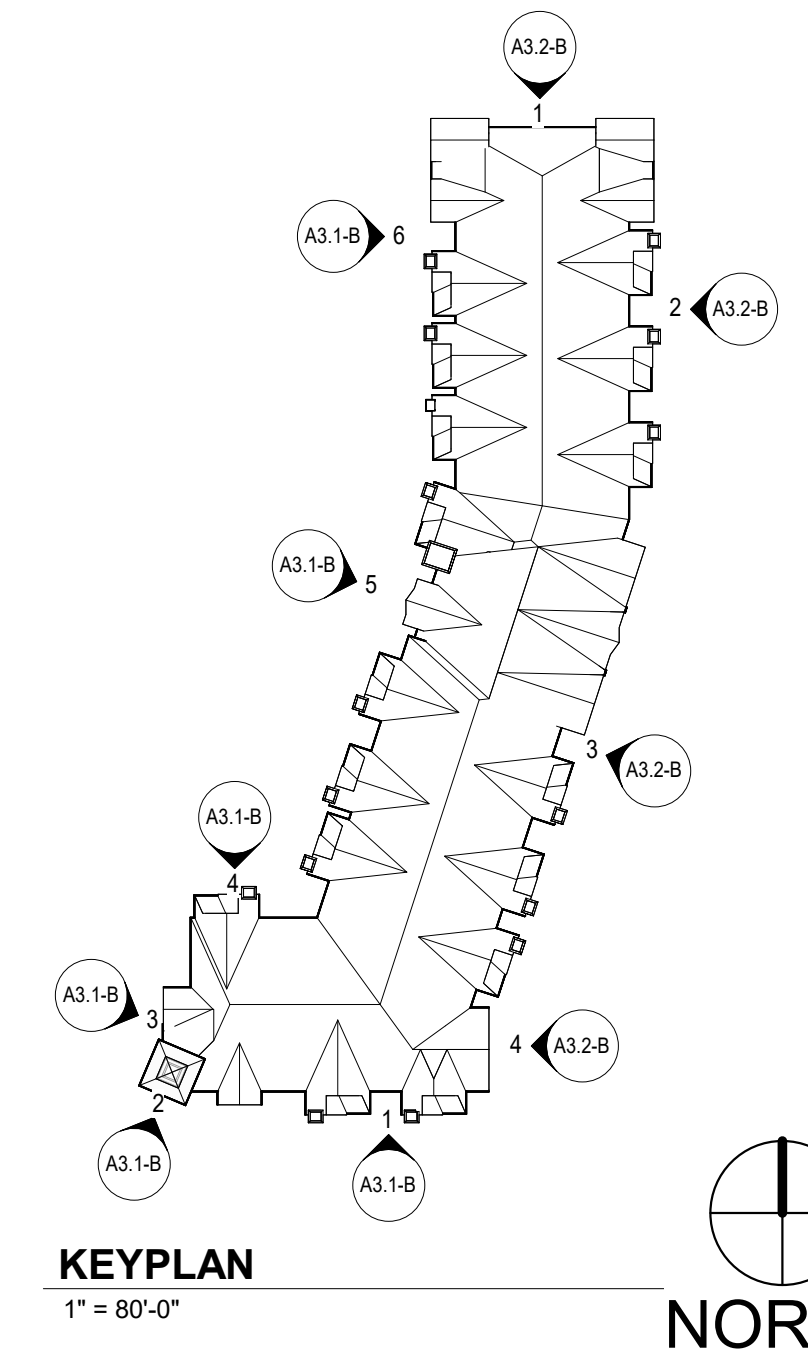
insite  
architects

1000 university ave. w. # suite 130  
st. paul, minnesota 55104  
612-252-4820

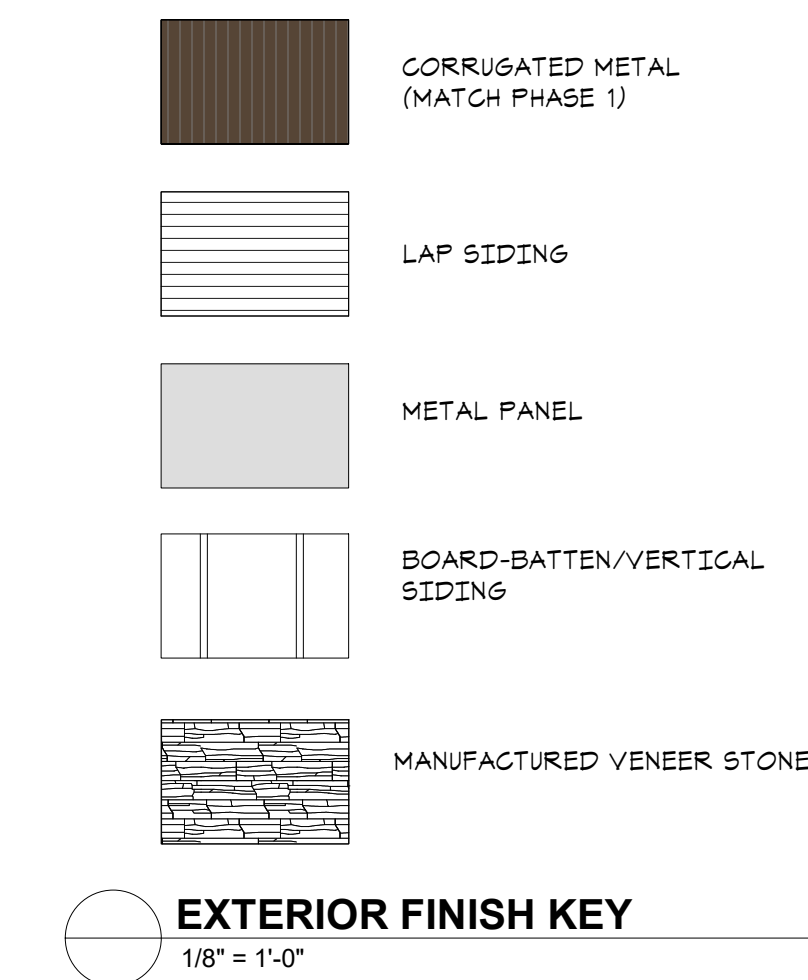
I hereby certify that this document was prepared by me or under my direct supervision and that I am a duly licensed architect under the laws of the State of Washington

Dawn Wiczorek  
Typed or Printed Name

11192 X  
License # Date



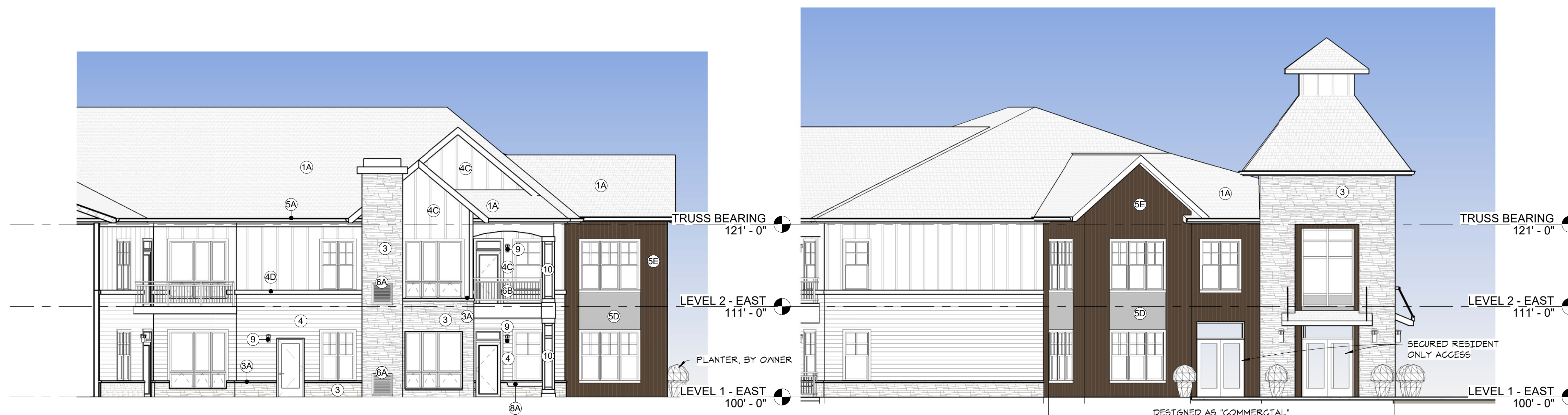
KEYNOTE LEGEND	
Key Value	Keynote Text
1A	ASPHALT SHINGLES
2	CONCRETE W/ FORMLINER- STONE FINISH
3	MANUFACTURED STONE VENEER
3A	MANUFACTURED STONE CAP/SILL/WATERTABLE+
4	FIBER CEMENT LAP SIDING
4C	FIBER CEMENT PANEL-BOARD & BATTEN
4C-a	
4D	FIBER CEMENT TRIM
5A	PREFIN GUTTER
5D	KYNAR FINISH ALUM VENEER PANEL
5E	PREFIN CORRUGATED METAL
6A	PREFINISHED LOUVER
6B	ALUMINUM RAILING SYSTEM
7A	VINYL WINDOWS
7B	ALUMINUM STOREFRONT SYSTEM
8A	WINDOW BOX
9	DECORATIVE WALL-MOUNTED LIGHT FIXTURE
10	FIBER CEMENT WRAPPED COLUMN W/TRIM



6 EXTERIOR ELEVATION - WEST SIDE (NORTH END)  
A3.1-B 1/8" = 1'-0"



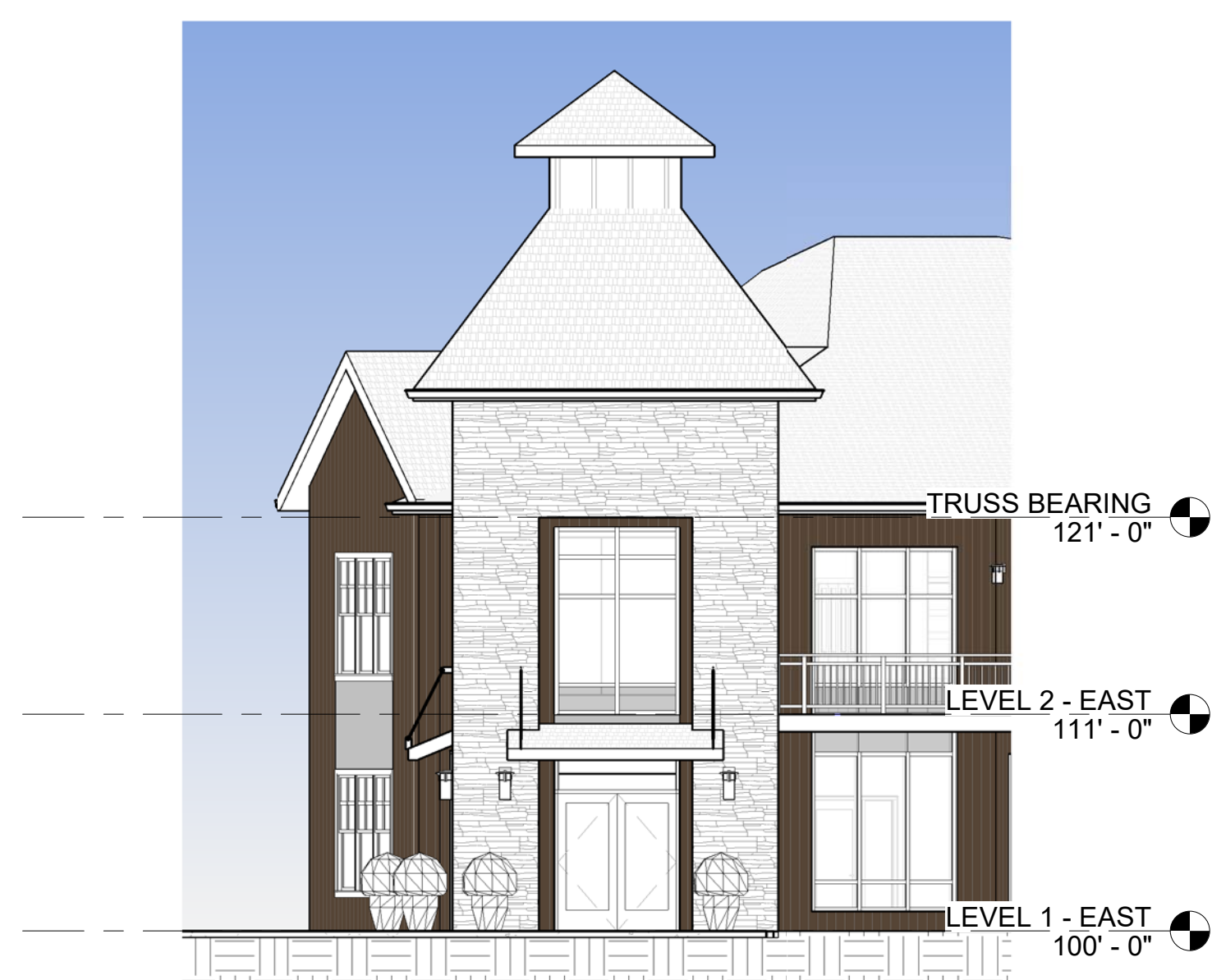
5 EXTERIOR ELEVATION - WEST SIDE (SOUTH END)  
A3.1-B 1/8" = 1'-0"



4 EXTERIOR ELEVATION - NORTH SIDE (SOUTH END)  
A3.1-B 1/8" = 1'-0"



3 EXTERIOR ELEVATION - TOWER EAST  
A3.1-B 1/8" = 1'-0"



2 EXTERIOR ELEVATION - TOWER SOUTH  
A3.1-B 1/8" = 1'-0"



1 EXTERIOR ELEVATION - SOUTH END\_OVERALL  
A3.1-B 1/8" = 1'-0"

WESLEY BRADLEY PARK 2  
EAST BROWNSTONE  
707 39TH AVENUE SE  
PUYALLUP, WA 98374

LAND USE & MX-DRO REVIEW  
SUBMITTAL  
7/21/2022

ORIGINAL ISSUE:

REVISIONS

No. Description Date

2108  
PROJECT NUMBER

JDK Checker  
DRAWN BY CHECKED BY

WESLEY BRADLEY PARK 2  
EAST BROWNSTONE

EXTERIOR ELEVATIONS -  
BROWNSTONE EAST

A3.1-B