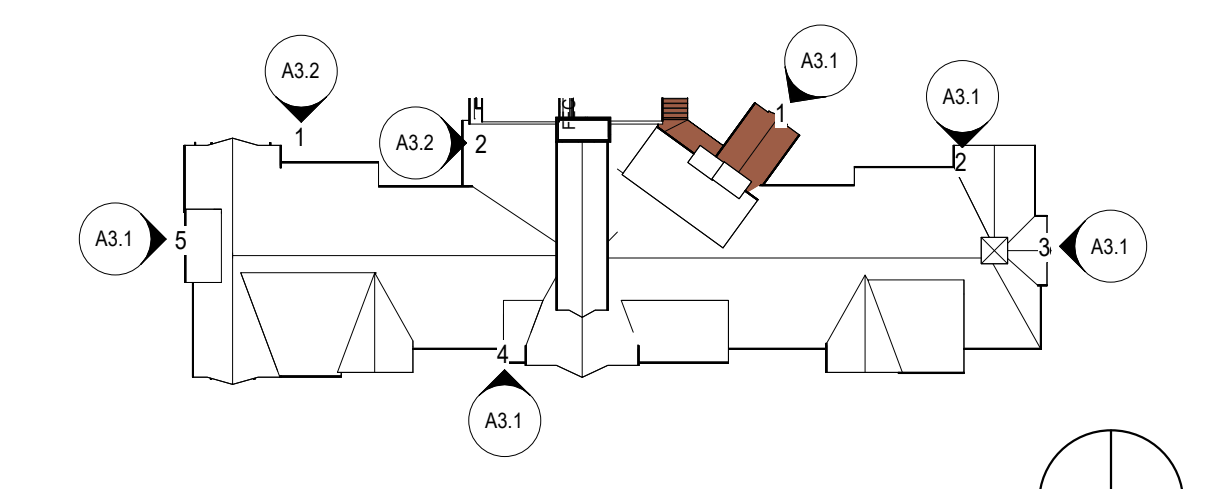
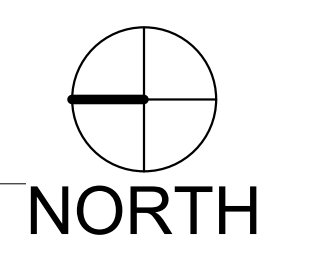




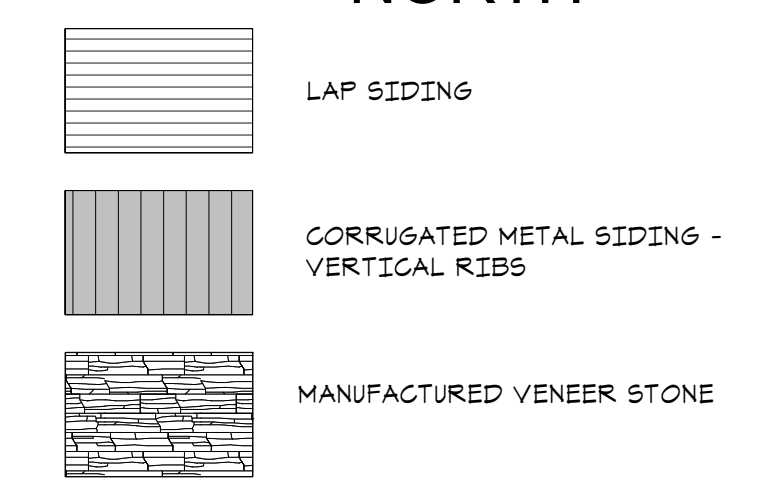
3 PHASE 2 CARE CENTER - ENTRY  
A3.2



PHASE 2 - KEYPLAN A3.2  
1" = 80'-0"



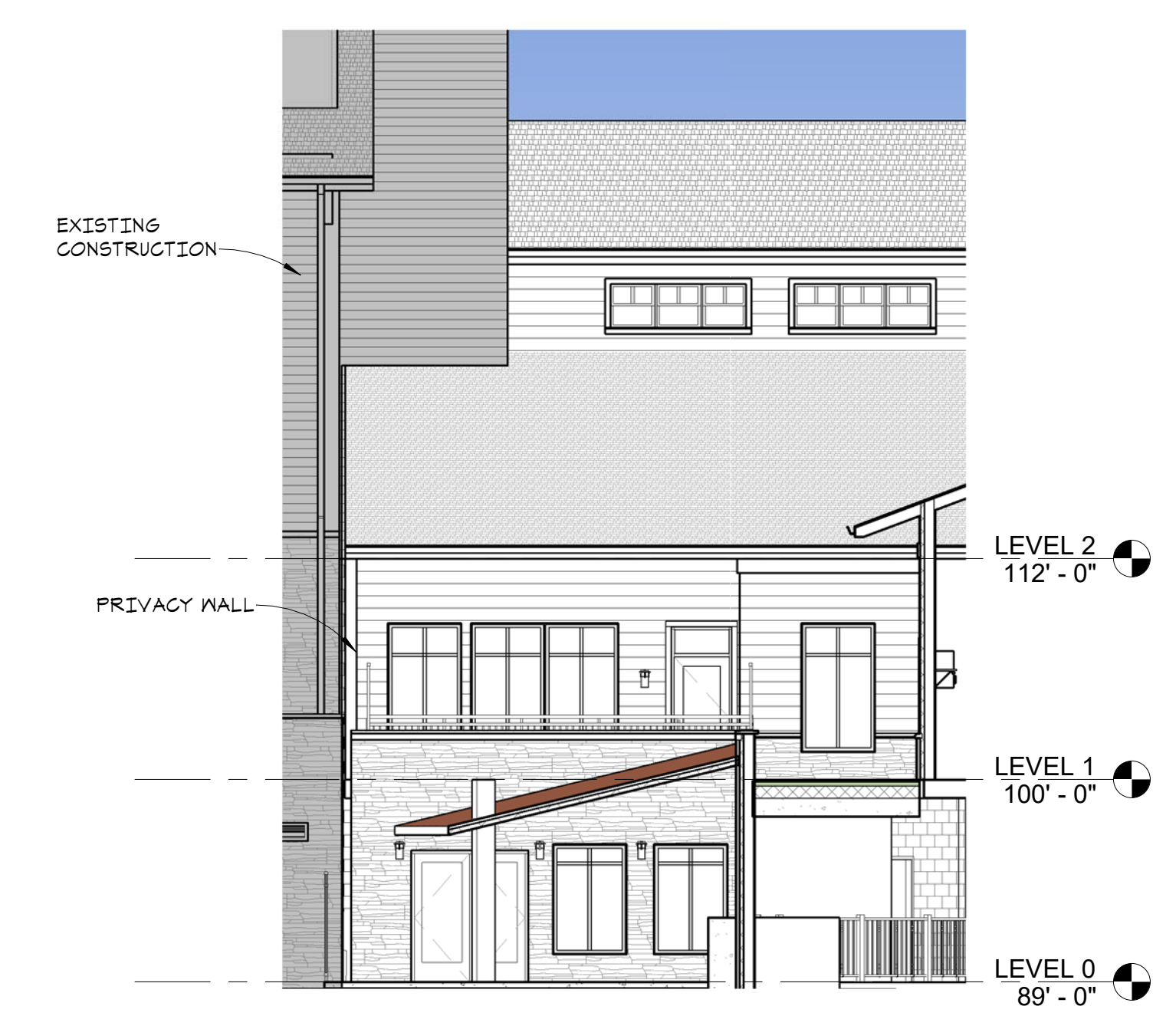
KEYNOTE LEGEND	
Key Value	Keynote Text
1A	ASPHALT SHINGLES
2	CONCRETE W/ FORMLINER- STONE FINISH
3	MANUFACTURED STONE VENEER
3A	MANUFACTURED STONE CAP/SILL/WATERTABLE+
4	FIBER CEMENT LAP SIDING
4B	FIBER CEMENT PANEL
4C	FIBER CEMENT PANEL-BOARD & BATTEN
4D	FIBER CEMENT TRIM
5A	PREFIN GUTTER
5B	PREFIN DOWNSPOUT
5D	KYNAR FINISH ALUM VENEER PANEL
5E	PREFIN CORRUGATED METAL
5F	PREFIN STANDING SEAM ROOF
5G	PREFIN STEEL TRIM
5H	PREFIN STEEL PANEL
6A	PREFINISHED LOUVER
6B	ALUMINUM RAILING SYSTEM
7A	VINYL WINDOWS
8	DECORATIVE BRACKET, PAINTED
8A	WINDOW BOX
9	DECORATIVE WALL-MOUNTED LIGHT FIXTURE
10	FIBER CEMENT WRAPPED COLUMN W/TRIM
11	



EXTERIOR FINISH KEY  
1/8" = 1'-0"

MAT'L TAKEOFF_WALLS	
Material Name	Material Area
Copper-Look Metal Panel	180
Metal - Corrugated	4,372
Siding - Clapboard	3,825
Stone - Ashlar Dry Stack-Natural Color-Warm(1)	2,621
Stone Textured Shotcrete	5,554
	16,552

MATERIAL %	
METAL: 28%	
SIDING: 23%	
MANUFACTURED STONE: 16%	
CONCRETE: 33%	



2 EXTERIOR ELEVATION - CC WELLNESS (NORTH)  
A3.2 1/8" = 1'-0"



1 EXTERIOR ELEVATION - CC WELLNESS (EAST)  
A3.2 1/8" = 1'-0"



I hereby certify that this document was prepared by me or under my direct supervision and that I am a duly licensed architect under the laws of the State of Washington

Dawn Wiczorek  
11192 X  
License # Date

WESLEY BRADLEY PARK  
PHASE 2 - CARE CENTER  
707 39TH AVENUE SE  
PUYALLUP, WA 98374

LAND USE PERMIT  
SUBMITTAL  
22 JULY 2022

REVISIONS  
No. Description Date

2108  
PROJECT NUMBER  
Author Checker  
DRAWN BY CHECKED BY  
WESLEY BRADLEY PARK  
PHASE 2 - CARE CENTER

EXTERIOR ELEVATIONS  
A3.2