



**PLANT PALETTE**

Symbol	Botanical Name	Common Name	Size & Spacing
	<i>Acer circinatum</i> *	Vine Maple	8'-10' H, 3 Stem min. Spacing per plan
	<i>Acer rubrum</i> 'Scarson'	Scarlet Sentinel Maple	2" Caliper Spacing per plan
	<i>Calocedrus decurrens</i> *	Incense Cedar	8'-10' H. Spacing per plan
	<i>Cercis canadensis</i> *	Eastern redbud	8'-10' H, 3 Stem min. Spacing per plan
	<i>Lagerstroemia f. Muskogee</i> *	Lavender Crape Myrtle	1.5' Caliper Spacing per plan
	<i>Platanus a. 'Bloodgood'</i> *	London Planetree	2" Caliper Spacing per plan
	<i>Pseudotsuga menziesii</i> *	Douglas Fir	8'-10' H. Spacing per plan
	<i>Quercus rubra</i> *	Northern Red Oak	2" Caliper Spacing per plan
	<i>Thuja plicata</i> *	Western Red Cedar	6'-8' H. Spacing per plan
	<i>Ulmus americana</i> 'Pinceton'	Pinceton Elm	2" Caliper Spacing per plan
	<i>Zelkova serrata</i>	Japanese Zelkova	2" Caliper Spacing per plan
		EXISTING TREE TO BE REMOVED	
		EXISTING TREE TO REMAIN	

**SHRUBS/ GROUNDCOVERS**

Symbol	Botanical Name	Common Name	On Center Spacing
	<i>Abelia grandiflora</i> 'Edward Goucher'	Glossy Abelia	4' O.C.
	<i>Achillea millefolium</i> 'Red Beauty'	Red Beauty Yarrow	2' O.C.
	<i>Aquilegia formosa</i> *	Western Columbine	3' O.C.
	<i>Arbutus unedo</i> 'Compacta'	Compact Strawberry Tree	6' O.C.
	<i>Arctostaphylos uva-ursi</i> 'Vancouver Jade'	Vancouver Jade Kinnikinnick	2.5' O.C.
	<i>Cortaderia x acutiflora</i>	Kari Foerster Feather Grass	2.5' O.C.
	<i>Carex marshallii</i> 'Ice Dance'	Ice Dance Variegated Sedge	2' O.C.
	<i>Cornus stolonifera</i> *	Redtwig Dogwood	4' O.C.
	<i>Fragaria chiloensis</i> *	Wild Strawberry	1.5' O.C.
	<i>Gallium odoratum</i> *	Sweet Woodruff	1.5' O.C.
	<i>Gaultheria shallon</i> *	Salal	4.5' O.C.
	<i>Genista pilosa</i> 'Vancouver Gold'	Vancouver Gold Broom	3' O.C.
	<i>Helictotrichon sempervirens</i>	Blue Owl Grass	2' O.C.
	<i>Hydrangea macrophylla</i> 'Nikko Blue'	Nikko Blue Hydrangea	4' O.C.
	<i>Hydrangea quercifolia</i> *	Oakleaf Hydrangea	8' O.C.
	<i>Lavandula angustifolia</i> 'Munstead'	Munstead Lavender	2.5' O.C.
	<i>Liriope muscari</i> 'Big Blue'	Big Blue Liriope	18" O.C.
	<i>Miscanthus sinensis</i> 'Adagio'	Adagio Dwarf Maiden Grass	2.5' O.C.
	<i>Fernisium atropurpureum</i> 'Harmel'	Harmel Fountain Grass	2.5' O.C.
	<i>Polystichum munifolium</i> *	Western Sword Fern	3' O.C.
	<i>Physocarpus opulifolius</i>	Ninebark	7.5' O.C.
	<i>Rosa x 'Scarlet Meidiland'</i>	Scarlet Meidiland Shrub Rose	3' O.C.
	<i>Rosa nutkana</i> *	Nootka Rose	7.5' O.C.
	<i>Sarcococca nuscifolia</i> *	Fragrant Sweet Box	3' O.C.
	<i>Spiraea x bumalda</i> 'Goldflame'	Goldflame Spiraea	3' O.C.
	<i>Vaccinium ovatum</i> *	Evergreen Huckleberry	7.5' O.C.

**SCREEN SHRUBS**

	<i>Euonymus alatus</i> 'Compactus'	Compact Burning Bush	3' O.C.
	<i>Ligustrum japonicum</i> 'Texanum'	Waxleaf Privet	3' O.C.
	<i>Mahonia aquifolium</i> 'Compacta'	Compact Oregon Grape	3' O.C.

(\*) INDICATES NATIVE PLANT SPECIES

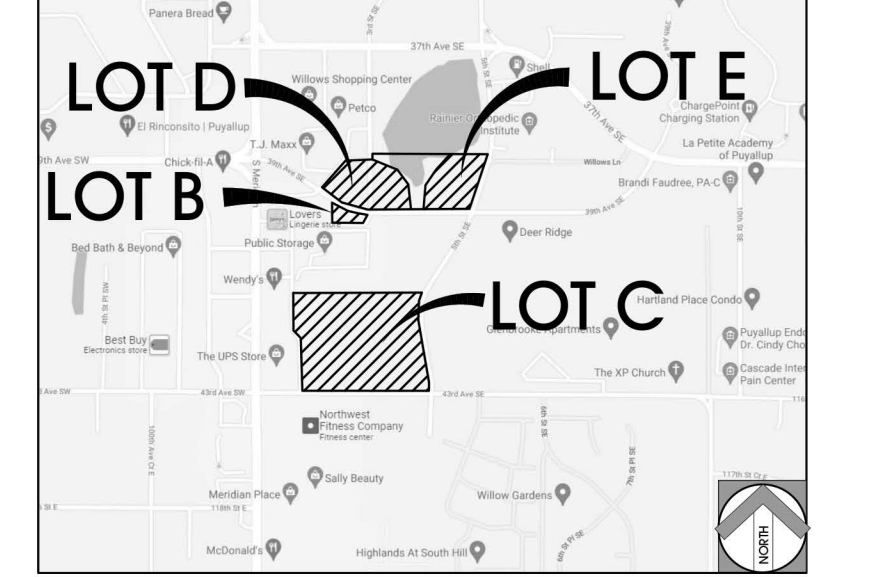
**NOTES**

- PLANT MATERIAL NOT LISTED MAY BE USED, SUBJECT TO APPROVAL BY THE CITY.
- ALL PLANTING MATERIAL SHALL MEET OR EXCEED THE MOST RECENT STANDARDS ESTABLISHED IN THE PUBLICATION 'AMERICAN STANDARDS FOR NURSERY STOCK', ANS Z60.1-2004 OR CURRENT SUCCESSOR OF THE AMERICAN ASSOCIATION OF NURSERYMEN (A.N.N.).
- ALL LANDSCAPE AREAS SHALL RECEIVE AUTOMATIC IRRIGATION SYSTEM.
- ALL LANDSCAPE INSTALLATION SHALL BE PERMANENTLY MAINTAINED.
- A MINIMUM OF 25% OF SHRUBS AND GROUNDCOVERS SHALL BE NATIVE TO THE PUGET SOUND REGION.

**LANDSCAPE TABULATIONS**

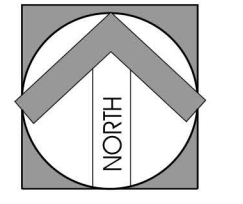
LOT B PARKING LOT AREA:	1,155 SF
LOT B PARKING LOT LANDSCAPE AREA:	195 SF (16%)
LOT C PARKING LOT AREA:	9,916 SF
LOT C PARKING LOT LANDSCAPE AREA:	2,286 SF (23%)
LOT D PARKING LOT AREA:	13,876 SF
LOT D PARKING LOT LANDSCAPE AREA:	7,431 SF (54%)
LOT E PARKING LOT AREA:	11,553 SF
LOT E PARKING LOT LANDSCAPE AREA:	4,848 SF (42%)

**VICINITY MAP**



**THE RONHOVE ARCHITECTS**  
 CONCEPTUAL LANDSCAPE PLAN - LOT D  
 DOS LAGOS MIXED-USE DEVELOPMENT  
 PUYALLUP, WA

SCALE 1"=20'  
 CDPC PROJECT NO: 210650  
 DECEMBER 8, 2022



conceptual design & planning company  
 COSTA MESA - ATASCADERO - SAN JOSE - LAS VEGAS







**PLANT PALETTE**

**TREES**

Symbol	Botanical Name	Common Name	Size & Spacing
	<i>Acer circinatum</i> *	Vine Maple	8'-10' H, 3" Stem min. Spacing per plan
	<i>Acer rubrum</i> 'Scarlet'	Scarlet Sentinel Maple	2" Caliper Spacing per plan
	<i>Calocedrus decurrens</i> *	Incense Cedar	8'-10' H. Spacing per plan
	<i>Cercis canadensis</i> *	Eastern redbud	8'-10' H, 3" Stem min. Spacing per plan
	<i>Lagerstroemia f. 'Muskegoe'</i>	Lavender Crape Myrtle	1.5" Caliper Spacing per plan
	<i>Platanus a. 'Bloodgood'</i> *	London Planetree	2" Caliper Spacing per plan
	<i>Pseudotsuga menziesii</i> *	Douglas Fir	8'-10' H. Spacing per plan
	<i>Quercus rubra</i> *	Northern Red Oak	2" Caliper Spacing per plan
	<i>Thuja plicata</i> *	Western Red Cedar	6'-8' H. Spacing per plan
	<i>Ulmus americana</i> 'Pincetonia'	Pincetonia Elm	2" Caliper Spacing per plan
	<i>Zelkova serrata</i>	Japanese Zelkova	2" Caliper Spacing per plan
		EXISTING TREE TO BE REMOVED	
		EXISTING TREE TO REMAIN	

**SHRUBS/ GROUNDCOVERS**

Symbol	Botanical Name	Common Name	On Center Spacing
	<i>Abelia grandiflora</i> 'Edward Goucher'	Glossy Abelia	4' O.C.
	<i>Achillea millefolium</i> 'Red Beauty'	Red Beauty Yarrow	2' O.C.
	<i>Aquilegia formosa</i> *	Western Columbine	3' O.C.
	<i>Arbutus unedo</i> 'Compacta'	Compact Strawberry Tree	6' O.C.
	<i>Arctostaphylos uva-ursi</i> 'Vancouver Jade'	Vancouver Jade Kinnikinnick	2.5' O.C.
	<i>Carmagrostis x acutiflora</i>	Kari Foerster Feather Grass	2.5' O.C.
	<i>Carex marshallii</i> 'Ice Dance'	Ice Dance Variegated Sedge	2' O.C.
	<i>Cornus stolonifera</i> *	Redtwig Dogwood	4' O.C.
	<i>Fragaria chiloensis</i> *	Wild Strawberry	1.5' O.C.
	<i>Galium odoratum</i> *	Sweet Woodruff	1.5' O.C.
	<i>Gaultheria shallon</i> *	Salal	4.5' O.C.
	<i>Genista pilosa</i> 'Vancouver Gold'	Vancouver Gold Broom	3' O.C.
	<i>Helictotrichon sempervirens</i>	Blue Cat Grass	2' O.C.
	<i>Hydrangea macrophylla</i> 'Nikko Blue'	Nikko Blue Hydrangea	4' O.C.
	<i>Hydrangea quercifolia</i> *	Oakleaf Hydrangea	8' O.C.
	<i>Lavandula angustifolia</i> 'Munstead'	Munstead Lavender	2.5' O.C.
	<i>Liriodendron muscari</i> 'Big Blue'	Big Blue Liriodendron	18' O.C.
	<i>Miscanthus sinensis</i> 'Adagio'	Adagio Dwarf Maiden Grass	2.5' O.C.
	<i>Pennisetum alopecuroides</i> 'Hameln'	Hameln Fountain Grass	2.5' O.C.
	<i>Polystichum munifolium</i> *	Western Sword Fern	3' O.C.
	<i>Physocarpus opulifolius</i>	Ninebark	7.5' O.C.
	<i>Rosa x 'Scarlet Meidland'</i>	Scarlet Meidland Shrub Rose	3' O.C.
	<i>Rosa nutkana</i> *	Nootka Rose	7.5' O.C.
	<i>Sarcococca nuscifolia</i> *	Fragrant Sweet Box	3' O.C.
	<i>Spiraea x bumalda</i> 'Goldflame'	Goldflame Spiraea	3' O.C.
	<i>Vaccinium ovatum</i> *	Evergreen Huckleberry	7.5' O.C.

**SCREEN SHRUBS**

	<i>Euonymus alatus</i> 'Compactus'	Compact Burning Bush	3' O.C.
	<i>Ligustrum japonicum</i> 'Texanum'	Waxleaf Privet	3' O.C.
	<i>Mahonia aquifolium</i> 'Compacta'	Compact Oregon Grape	3' O.C.

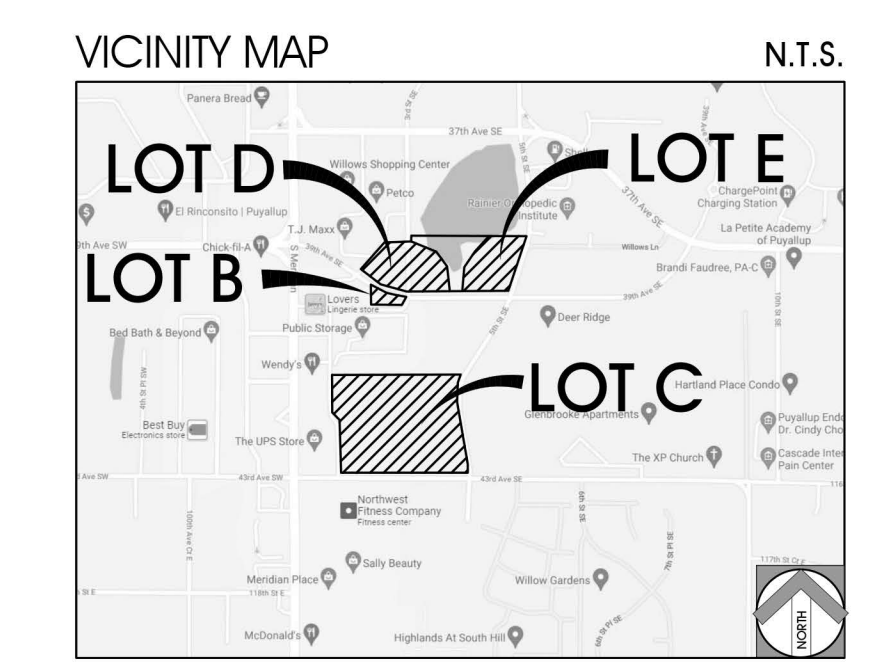
(\*) INDICATES NATIVE PLANT SPECIES

**NOTES**

- PLANT MATERIAL NOT LISTED MAY BE USED, SUBJECT TO APPROVAL BY THE CITY.
- ALL PLANTING MATERIAL SHALL MEET OR EXCEED THE MOST RECENT STANDARDS ESTABLISHED IN THE PUBLICATION 'AMERICAN STANDARDS FOR NURSERY STOCK', ANS 260.1-2004 OR CURRENT SUCCESSOR OF THE AMERICAN ASSOCIATION OF NURSERYMEN (A.N.S.).
- ALL LANDSCAPE AREAS SHALL RECEIVE AUTOMATIC IRRIGATION SYSTEM.
- ALL LANDSCAPE INSTALLATION SHALL BE PERMANENTLY MAINTAINED.
- A MINIMUM OF 25% OF SHRUBS AND GROUNDCOVERS SHALL BE NATIVE TO THE PUGET SOUND REGION.

**LANDSCAPE TABULATIONS**

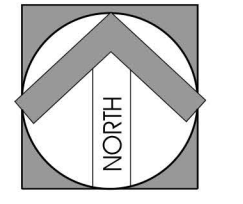
LOT B PARKING LOT AREA:	1,155 SF
LOT B PARKING LOT LANDSCAPE AREA:	195 SF (16%)
LOT C PARKING LOT AREA:	9,916 SF
LOT C PARKING LOT LANDSCAPE AREA:	2,286 SF (23%)
LOT D PARKING LOT AREA:	13,876 SF
LOT D PARKING LOT LANDSCAPE AREA:	7,431 SF (54%)
LOT E PARKING LOT AREA:	11,553 SF
LOT E PARKING LOT LANDSCAPE AREA:	4,848 SF (42%)



CONCEPTUAL LANDSCAPE PLAN - LOT E  
 DOS LAGOS MIXED-USE DEVELOPMENT  
 PUYALLUP, WA



SCALE 1"=20'  
 CDPC PROJECT NO: 211050  
 DECEMBER 8, 2022



conceptual design & planning company  
 3195-C Airport Loop Drive  
 Costa Mesa, CA 92626  
 1-949-399-2870  
 www.cdpcpr.com  
 COSTA MESA - ATASCADERO - SAN JOSE - LAS VEGAS

