

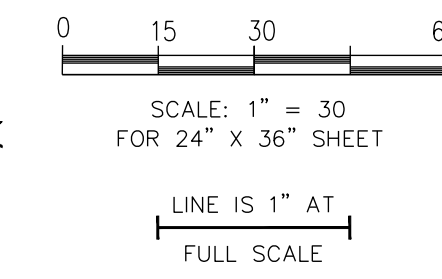
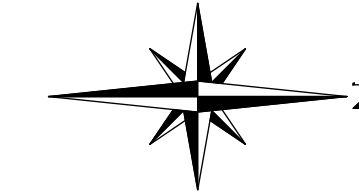
© 2022 Abbey Road Group Land Development Services Company, LLC, Puyallup, WA All rights reserved.
 These drawings, plans, specifications and other documents, including those in electronic form, are owned by Abbey Road Group Land Development Services Company, LLC and it retains all common law, statutory and other reserved rights, including copyrights.
 These drawings, plans, specifications and other documents cannot be copied, distributed, submitted to others (including governmental agencies and lenders) without the express written consent of Abbey Road Group Land Development Services Company, LLC.

EAST TOWN CROSSING

SEC. 26,35/ TWP. 20 N./ RGE. 4 E., W.M.

SANITARY SEWER PLAN EAST

The submitted civil plans contain review comments ("markups") that must be addressed prior to landscape approval as well as informational comments that can be addressed at time of civil application. Please refer to the DRT Letter "Action Items" for markups that must be addressed for landscape approval.
 [Prelim. Civil Dwg Part 3; Pg 1 of 6]



APPROVED

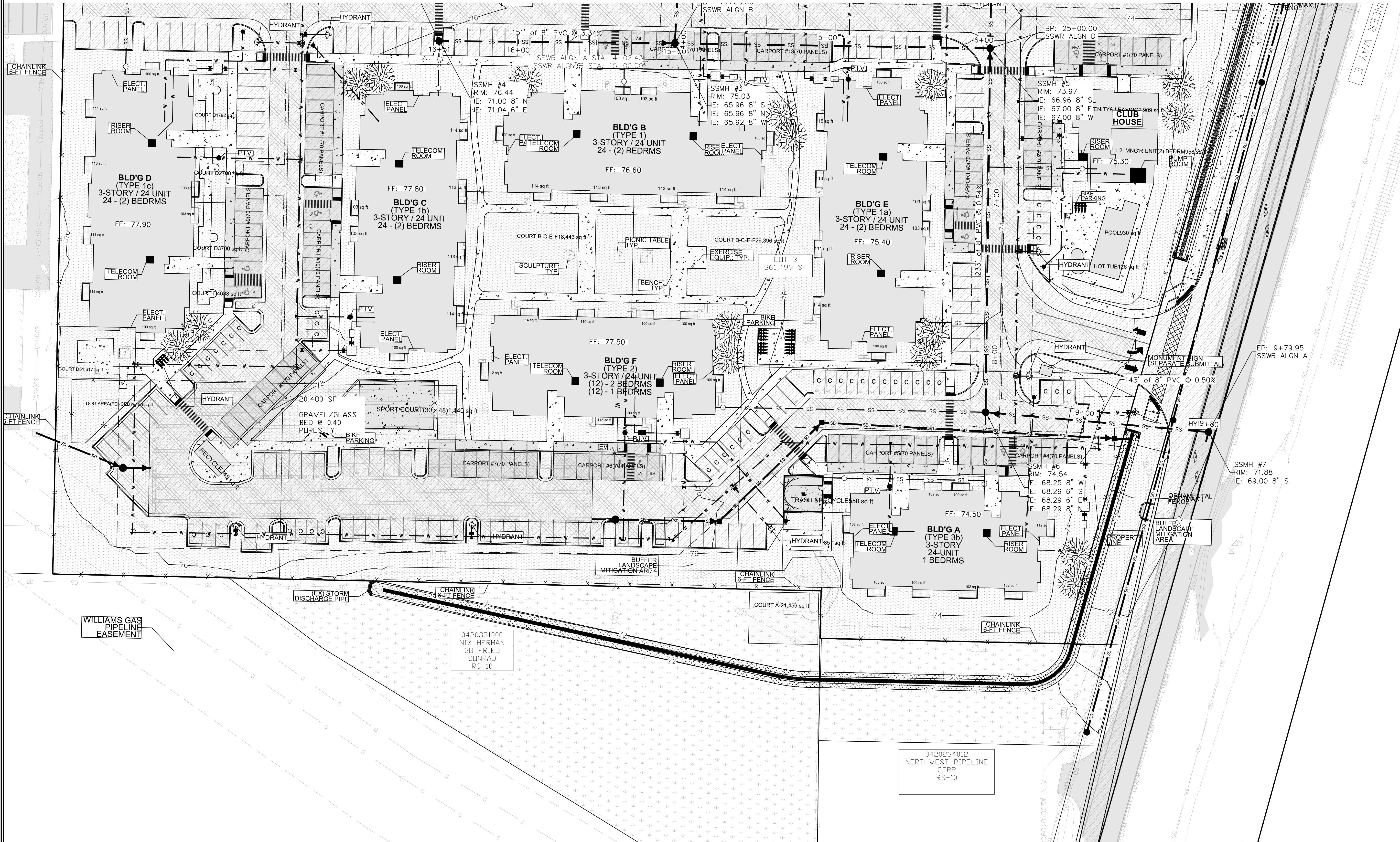
BY: _____
 CITY OF PUYALLUP
 DEVELOPMENT ENGINEERING

DATE: _____

NOTE: THIS APPROVAL IS VOID AFTER 180 DAYS FROM APPROVAL DATE. THE CITY WILL NOT BE RESPONSIBLE FOR ERRORS AND/OR OMISSIONS ON THESE PLANS. FIELD CONDITIONS MAY DICTATE CHANGES TO THESE PLANS AS DETERMINED BY THE DEVELOPMENT ENGINEERING MANAGER.

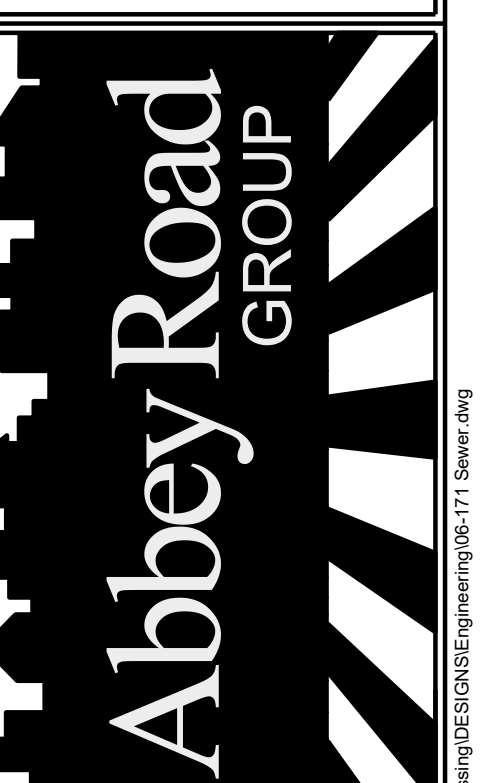
East Town Crossing
 Sanitary Sewer
 Plan East
 Puyallup, WA

MATCHLINE: SEE SANITARY SEWER PLAN WEST



FOR: East Town Crossing, LLC.
 1001 Shaw Road
 Puyallup, WA 98372

Abbey Road Group
 Land Development
 Services Company, LLC
 2102 E MAIN AVE, SUITE 109
 PUYALLUP, WA 98372
 P.O. Box 1224, Puyallup, WA 98371
 (253) 435-3699, Fax (253) 446-3159



REVISIONS:	CHK:	APR:	DATE:	PER:
BY:				

JOB #:	06-171-1
DESIGNED BY:	JMB
DEVELOPMENT REVIEW:	PRB
APPROVED BY:	GH
DRAFTED BY:	HJU
DATE:	05/17/2022
SHEET:	



THE CONTRACTOR SHALL VERIFY THE LOCATION OF ALL EXISTING UTILITIES PRIOR TO ANY CONSTRUCTION. AGENCIES INVOLVED SHALL BE NOTIFIED WITHIN A REASONABLE TIME PRIOR TO THE START OF CONSTRUCTION.

CALL BEFORE YOU DIG (811)
 WWW.WASHINGTON811.COM

File: T:\PROJECTS\FILES\ACTIVE\06-171-01-East Town Crossing\DESIGN\ENGINEERING\05-171 Sewer.dwg
 Plotted: 5/16/2022 11:52 AM
 Plotted by: Hanson, Justin@rdm

© 2022 Abbey Road Group Land Development Services Company, LLC, Puyallup, WA All rights reserved.
 These drawings, plans, specifications and other documents, including those in electronic form, are owned by Abbey Road Group Land Development Services Company, LLC and it retains all common law, statutory and other reserved rights, including copyrights.
 These drawings, plans, specifications and other documents cannot be copied, distributed, submitted to others (including governmental agencies and lenders) without the express written consent of Abbey Road Group Land Development Services Company, LLC.

EAST TOWN CROSSING

SEC. 26,35/ TWP. 20 N./ RGE. 4 E., W.M.

SANITARY SEWER PROFILES

APPROVED

BY _____
 CITY OF PUYALLUP
 DEVELOPMENT ENGINEERING

DATE _____

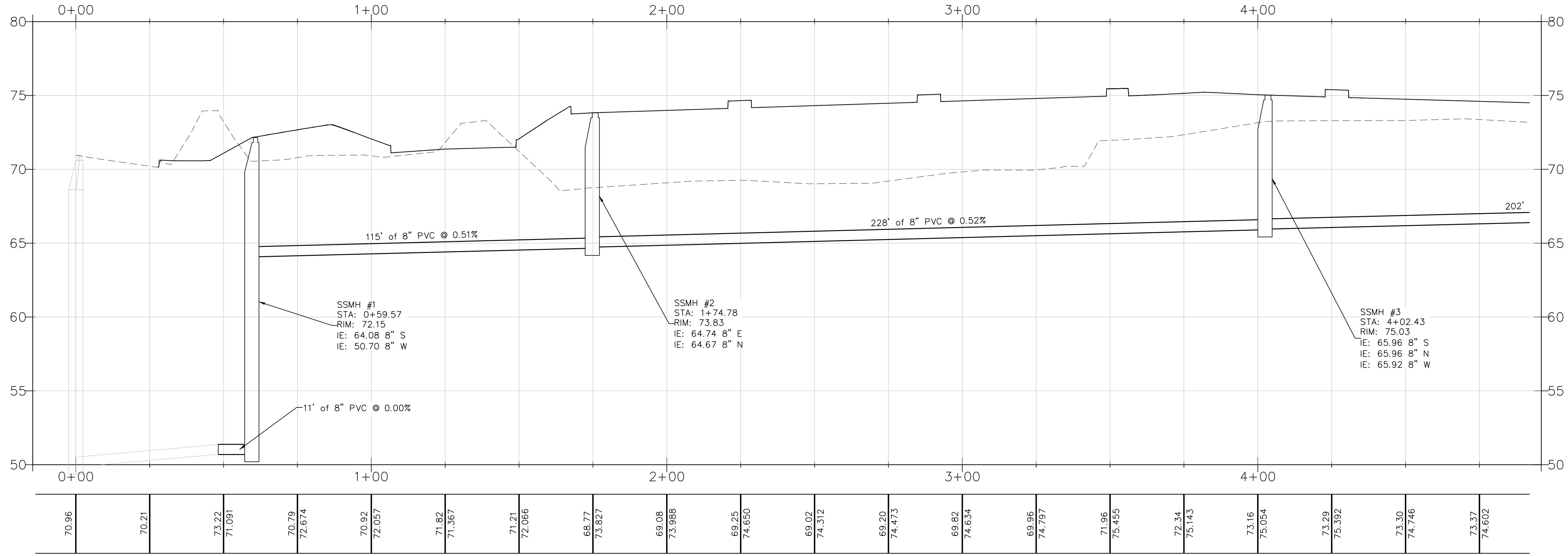
NOTE: THIS APPROVAL IS VOID AFTER 180 DAYS FROM APPROVAL DATE. THE CITY WILL NOT BE RESPONSIBLE FOR ERRORS AND/OR OMISSIONS ON THESE PLANS. FIELD CONDITIONS MAY DICTATE CHANGES TO THESE PLANS AS DETERMINED BY THE DEVELOPMENT ENGINEERING MANAGER.

**East Town Crossing
Sanitary Sewer
Profiles**

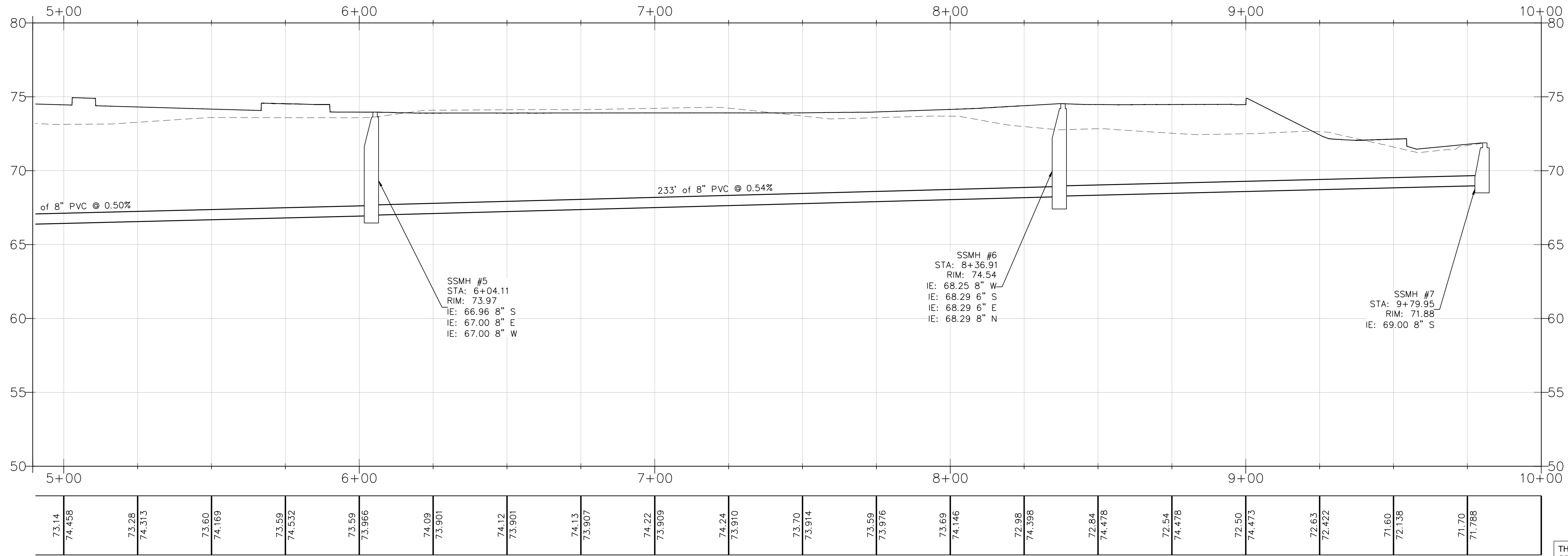
Puyallup, WA

East Town Crossing, LLC.

1001 Shaw Road
Puyallup, WA 98372



SEWER ALIGNMENT PROFILE A - STA 0+00 - 5+00
 HORIZONTAL SCALE: 1" = 20'
 VERTICAL SCALE: 1" = 4'



SEWER ALIGNMENT PROFILE A - STA 5+00 - 10+00
 HORIZONTAL SCALE: 1" = 20'
 VERTICAL SCALE: 1" = 4'



THE CONTRACTOR SHALL VERIFY THE LOCATION OF ALL EXISTING UTILITIES PRIOR TO ANY CONSTRUCTION. AGENCIES INVOLVED SHALL BE NOTIFIED WITHIN A REASONABLE TIME PRIOR TO THE START OF CONSTRUCTION.

CALL BEFORE YOU DIG (811)
WWW.WASHINGTON811.COM

REVISIONS: BY: _____ CHK: _____ APR: _____ DATE: _____ PER: _____	DESIGNED BY: JMB DEVELOPMENT REVIEW: PRB APPROVED BY: GH DRAFTED BY: HPJ DATE: 05/17/2022 SHEET: _____	<p>Abbey Road Group Land Development Services Company, LLC 2102 E MAIN AVE, SUITE 109 PUYALLUP, WA 98372 P.O. Box 1224, Puyallup, WA 98371 (253) 435-3699, Fax (253) 446-3159</p>
--	---	--

File: T:\PROJECTS\FILES\ACTIVE\06-171-01_East Town Crossing\DESIGN\Engineering\06-171 Sewer.dwg
 Plotter: S:\B2022-11-23-A1

© 2022 Abbey Road Group Land Development Services Company, LLC, Puyallup, WA All rights reserved.
 These drawings, plans, specifications and other documents, including those in electronic form, are owned by Abbey Road Group Land Development Services Company, LLC and it retains all common law, statutory and other reserved rights, including copyrights.
 These drawings, plans, specifications and other documents cannot be copied, distributed, submitted to others (including governmental agencies and lenders) without the express written consent of Abbey Road Group Land Development Services Company, LLC.

EAST TOWN CROSSING

SEC. 26,35/ TWP. 20 N./ RGE. 4 E., W.M.

SANITARY SEWER PROFILES

APPROVED

BY _____
 CITY OF PUYALLUP
 DEVELOPMENT ENGINEERING

DATE _____

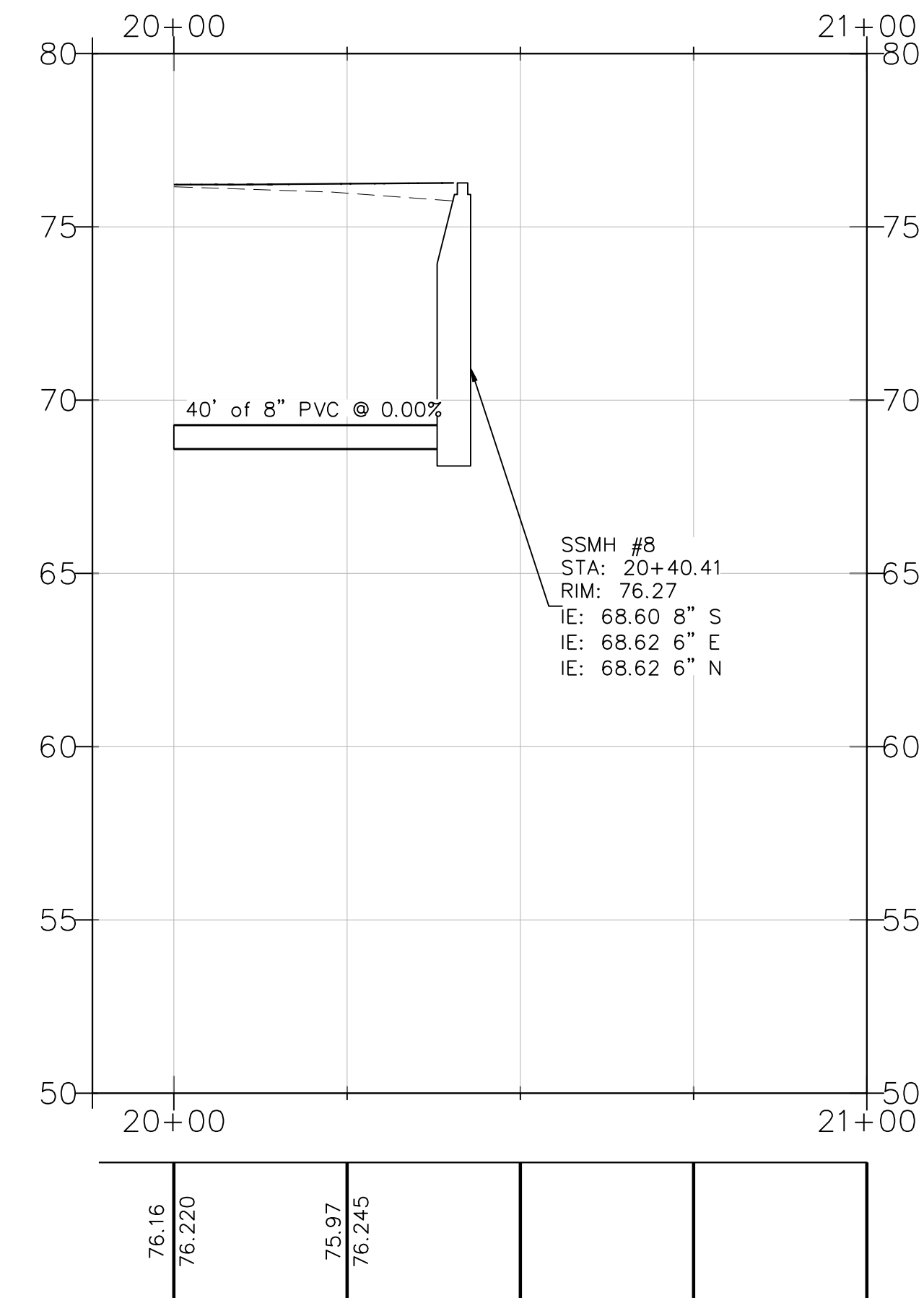
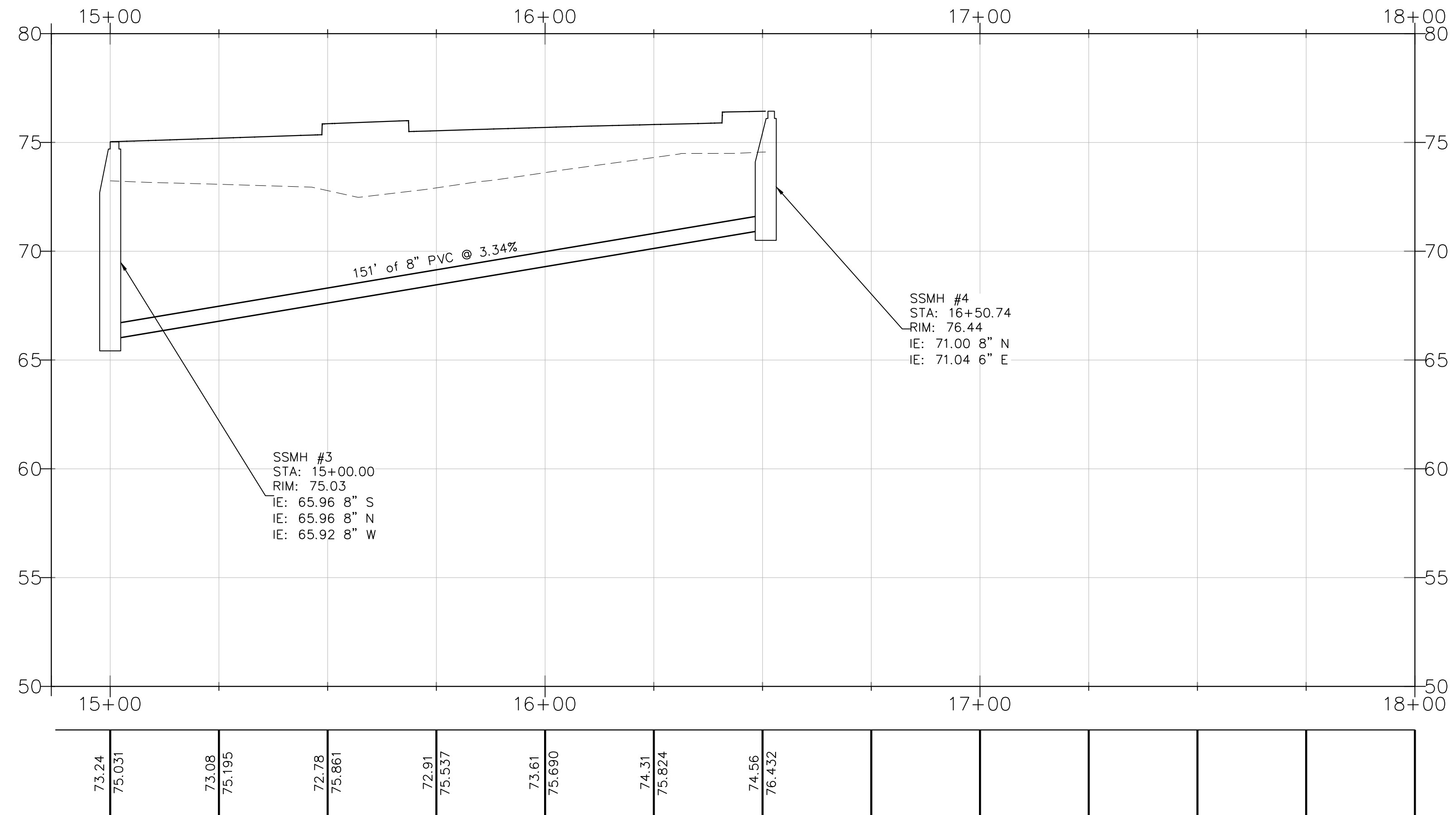
NOTE: THIS APPROVAL IS VOID AFTER 180 DAYS FROM APPROVAL DATE. THE CITY WILL NOT BE RESPONSIBLE FOR ERRORS AND/OR OMISSIONS ON THESE PLANS. FIELD CONDITIONS MAY DICTATE CHANGES TO THESE PLANS AS DETERMINED BY THE DEVELOPMENT ENGINEERING MANAGER.

**East Town Crossing
Sanitary Sewer
Profiles**

Puyallup, WA

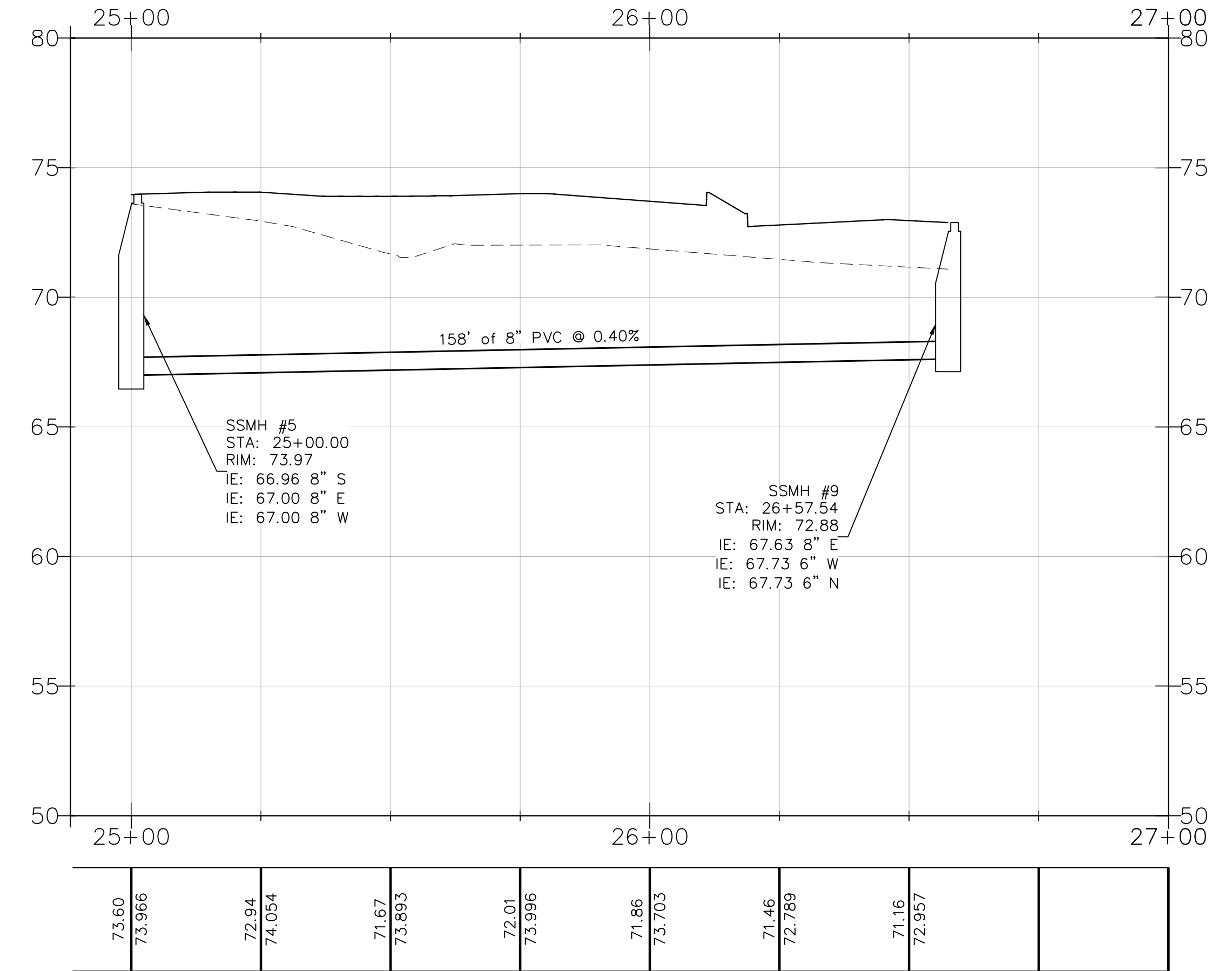
East Town Crossing, LLC.

1001 Shaw Road
Puyallup, WA 98372



SEWER ALIGNMENT PROFILE B
 HORIZONTAL SCALE: 1" = 20'
 VERTICAL SCALE: 1" = 4'

SEWER ALIGNMENT PROFILE C
 HORIZONTAL SCALE: 1" = 20'
 VERTICAL SCALE: 1" = 4'



SEWER ALIGNMENT PROFILE D
 HORIZONTAL SCALE: 1" = 20'
 VERTICAL SCALE: 1" = 4'

REVISIONS: BY: _____ CHK: _____ APR: _____ DATE: _____ PER: _____	DESIGNED BY: JMB DEVELOPMENT REVIEW: PRB APPROVED BY: GH DRAFTED BY: HPJ DATE: 05/17/2022 SHEET: _____	<p>Abbey Road Group Land Development Services Company, LLC</p> <p>2102 E MAIN AVE, SUITE 109 PUYALLUP, WA 98372 P.O. Box 1224, Puyallup, WA 98371 (253) 435-3699, Fax (253) 446-3159</p>
--	---	--



THE CONTRACTOR SHALL VERIFY THE LOCATION OF ALL EXISTING UTILITIES PRIOR TO ANY CONSTRUCTION. AGENCIES INVOLVED SHALL BE NOTIFIED WITHIN A REASONABLE TIME PRIOR TO THE START OF CONSTRUCTION.

CALL BEFORE YOU DIG (811)
 WWW.WASHINGTON811.COM

File: T:\PROJECTS\FILES\ACTIVE\06-17-01_East Town Crossing\DESIGN\Engineering\05-1711_Sewer.dwg
 Plotted: 5/18/22 11:51 AM
 Plotted by: Hanson, Justin@rdg

EAST TOWN CROSSING

SEC. 26,35/ TWP. 20 N./ RGE. 4 E., W.M.

SANITARY SEWER NOTES & DETAILS

APPROVED

BY: _____
 CITY OF PUYALLUP
 DEVELOPMENT ENGINEERING

DATE: _____

NOTE: THIS APPROVAL IS VOID AFTER 180 DAYS FROM APPROVAL DATE. THE CITY WILL NOT BE RESPONSIBLE FOR ERRORS AND/OR OMISSIONS ON THESE PLANS. FIELD CONDITIONS MAY DICTATE CHANGES TO THESE PLANS AS DETERMINED BY THE DEVELOPMENT ENGINEERING MANAGER.

East Town Crossing
Sanitary Sewer Notes & Details
 Puyallup, WA

East Town Crossing, LLC.
 1001 Shaw Road
 Puyallup, WA 98372

FRAME AND COVER SECTION

SCALE 1:1

SCALE 1:2

CITY OF PUYALLUP
 DEVELOPMENT ENGINEERING and PUBLIC WORKS DEPARTMENTS

SIDE SEWER CLEAN OUT WHEN PLACED IN DRIVEWAY

DATE	04.03.05
BY	
CHK	
APP	
PER	

PIPE TRENCHING BEDDING AND BACKFILL

SCALE 1:1

CITY OF PUYALLUP
 DEVELOPMENT ENGINEERING and PUBLIC WORKS DEPARTMENTS

PIPE TRENCHING BEDDING AND BACKFILL

DATE	06.01.01
BY	
CHK	
APP	
PER	

INSIDE DROP SANITARY SEWER MANHOLE

SCALE 1:2

SCALE 1:4

CITY OF PUYALLUP
 DEVELOPMENT ENGINEERING and PUBLIC WORKS DEPARTMENTS

INSIDE DROP SANITARY SEWER MANHOLE

DATE	04.01.02
BY	
CHK	
APP	
PER	

INSIDE DROP SANITARY SEWER MANHOLE (NOTES)

- NEAT LINE CUTS SHALL BE SEALED AT TOP WITH A HOT PAVING GRADE ASPHALT AND FACE OF CUT TUCKED. ASPHALT DEPTH TO MATCH EXISTING.
- TOP OF SHELVE SLOPE 1/2" PER FOOT MINIMUM. CONSTRUCT IN FIELD CHANNEL AND SHELF TO THE CROWN OF PIPE.
- MANHOLE RING SHALL CONFORM TO SECTION B, ASTM C 478 (ASTM M-199) AND MEET ALL GSA REQUIREMENTS. MANHOLE RINGS SHALL BE PARALLEL OR APPROXIMATELY PARALLEL AT THE OPTION OF THE MANUFACTURER, EXCEPT THAT ALL STEPS IN ANY MANHOLE SHALL BE SIMILAR. PENETRATION OF OUTER WALL BY A LEIS IS PROHIBITED. SEE CITY STANDARD DETAIL NO. 06.01.04 & 06.01.05.
- PRECAST BASES SHALL BE FURNISHED WITH CUTOUTS OR KNOCKOUTS. KNOCKOUTS SHALL HAVE A WALL THICKNESS OF 2" MINIMUM. DROP INLET PIPE HOLE MAY BE FIELD CONSTRUCTED.
- KNOCKOUT OR CUTOUT HOLE SIZE IS EQUAL TO PIPE OUTER DIAMETER PLUS MANHOLE WALL THICKNESS. MINIMUM DISTANCE BETWEEN HOLES IS 6".
- PRECAST CONCRETE MANHOLE COMPONENTS SHALL CONFORM TO ASTM C-478.
- FLEXIBLE JOINTS SHALL BE RUBBER GASKETED IN ACCORDANCE WITH THE STANDARD SPECIFICATIONS. WEDGED, SPIR-PAKED, OR CAST-IN-PLACE JOINTS WILL BE PERMITTED ONLY FOR CONNECTIONS TO OR THROUGH MANHOLES. A FLEXIBLE GASKETED JOINT SHALL BE INSTALLED WITHIN ONE (1) FOOT OF EACH CONNECTION TO MANHOLES. CONNECTIONS TO MANHOLE SHALL UTILIZE A KOR N SEAL CONNECTION. CONNECTIONS TO THESE STRUCTURES WITH PVC PIPE SHALL UTILIZE A MANHOLE COUPLING AND RUBBER GASKET.
- MANHOLE RING AND COVER: THE COVER SHALL BE MARKED WITH "TERRAZ" IN THE (2) INCH RAISED LETTERS (SEE CITY STANDARD DETAIL NO. 06.01.02 AND 06.01.03 FOR ADDITIONAL INFORMATION).
- THE MAXIMUM CHANGE IN FLOW DIRECTION IN MANHOLES SHALL BE 90 DEGREES. FOR ALL CHANGES IN FLOW DIRECTION GREATER THAN 45 DEGREES, A MINIMUM DROP OF 0.10 FEET BETWEEN INVERTS SHALL BE PROVIDED AND CHANNELIZATION PROVIDED.

CITY OF PUYALLUP
 DEVELOPMENT ENGINEERING and PUBLIC WORKS DEPARTMENTS

INSIDE DROP SANITARY SEWER MANHOLE (NOTES)

DATE	04.01.03
BY	
CHK	
APP	
PER	

SANITARY SEWER MANHOLE

SCALE 1:1

CITY OF PUYALLUP
 DEVELOPMENT ENGINEERING and PUBLIC WORKS DEPARTMENTS

SANITARY SEWER MANHOLE

DATE	04.01.01
BY	
CHK	
APP	
PER	

MANHOLE FRAME AND COVER

SCALE 1:1

CITY OF PUYALLUP
 DEVELOPMENT ENGINEERING and PUBLIC WORKS DEPARTMENTS

MANHOLE FRAME AND COVER

DATE	06.01.02
BY	
CHK	
APP	
PER	

MANHOLE STEP AND HANDHOLD

SCALE 1:1

CITY OF PUYALLUP
 DEVELOPMENT ENGINEERING and PUBLIC WORKS DEPARTMENTS

MANHOLE STEP AND HANDHOLD

DATE	06.01.03
BY	
CHK	
APP	
PER	

SANITARY SEWER NOTES:

- ALL WORK IN CITY RIGHT-OF-WAY REQUIRES A PERMIT FROM THE CITY OF PUYALLUP. PRIOR TO ANY WORK COMMENCING, THE GENERAL CONTRACTOR SHALL ARRANGE FOR A PRECONSTRUCTION MEETING AT THE DEVELOPMENT ENGINEERING SERVICES OFFICE. THE MEETING SHALL BE ATTENDED BY ALL CONTRACTORS THAT WILL PERFORM WORK SHOWN ON THESE PLANS. REPRESENTATIVES FROM ALL APPLICABLE UTILITY COMPANIES, THE PROJECT OWNER AND APPROPRIATE CITY STAFF. CONTACT ENGINEERING SERVICES TO SCHEDULE THE MEETING (253) 841-5568. THE CONTRACTOR IS RESPONSIBLE TO HAVE THEIR OWN APPROVED SET OF PLANS AT THE MEETING.
- AFTER COMPLETION OF ALL ITEMS SHOWN ON THESE PLANS AND BEFORE ACCEPTANCE OF THE PROJECT, THE CONTRACTOR SHALL OBTAIN A "PUNCH LIST" PREPARED BY THE CITY'S INSPECTOR DETAILING REMAINING ITEMS OF WORK TO BE COMPLETED. ALL ITEMS OF WORK SHOWN ON THESE PLANS SHALL BE COMPLETED TO THE SATISFACTION OF THE CITY PRIOR TO ACCEPTANCE OF THE WATER SYSTEM AND PROVISION OF SANITARY SEWER SERVICE.
- ALL MATERIALS AND WORKMANSHIP SHALL CONFORM TO THE STANDARD SPECIFICATIONS FOR ROAD, BRIDGE, AND MUNICIPAL CONSTRUCTION (HEREINAFTER REFERRED TO AS THE "STANDARD SPECIFICATIONS"), WASHINGTON STATE DEPARTMENT OF TRANSPORTATION AND AMERICAN PUBLIC WORKS ASSOCIATION, WASHINGTON STATE CHAPTER, LATEST EDITION, UNLESS SUPERSEDED OR AMENDED BY THE CITY OF PUYALLUP CITY STANDARDS FOR PUBLIC WORKS ENGINEERING AND CONSTRUCTION (HEREINAFTER REFERRED TO AS THE "CITY STANDARDS").
- A COPY OF THESE APPROVED PLANS AND APPLICABLE CITY DEVELOPER SPECIFICATIONS AND DETAILS SHALL BE ON SITE DURING CONSTRUCTION.
- ANY REVISIONS MADE TO THESE PLANS MUST BE REVIEWED AND APPROVED BY THE DEVELOPER'S ENGINEER AND THE ENGINEERING SERVICES STAFF PRIOR TO ANY IMPLEMENTATION IN THE FIELD. THE CITY SHALL NOT BE RESPONSIBLE FOR ANY ERRORS AND/OR OMISSIONS ON THESE PLANS.
- THE CONTRACTOR SHALL HAVE ALL UTILITIES VERIFIED ON THE GROUND PRIOR TO ANY CONSTRUCTION. CALL (253) AT LEAST TWO WORKING DAYS IN ADVANCE. THE OWNER AND HIS/HER ENGINEER SHALL BE CONTACTED IMMEDIATELY IF A CONFLICT EXISTS.
- ANY STRUCTURE AND/OR OBSTRUCTION WHICH REQUIRE REMOVAL OR RELOCATION RELATING TO THIS PROJECT SHALL BE DONE SO AT THE DEVELOPER'S EXPENSE.
- MINIMUM GRADE ON ALL 4 INCH RESIDENTIAL SIDE SEWERS SHALL BE 2 PERCENT AND 6 INCH COMMERCIAL SIDE SEWERS SHALL BE 1 PERCENT; MAXIMUM SHALL BE 8 PERCENT. ALL SIDE SEWERS SHALL BE 6 INCHES WITHIN CITY RIGHT-OF-WAY.
- SIDE SEWERS SHALL BE INSTALLED IN ACCORDANCE WITH CITY STANDARD NOS. 04.03.01, 04.03.02, 04.03.03 AND 04.03.04. SIDE SEWER INSTALLATION WORK SHALL BE DONE IN ACCORDANCE WITH THE WASHINGTON INDUSTRIAL SAFETY AND HEALTH ACT (WISHA).
- ALL SEWER PIPE SHALL BE PVC, POLYPROPYLENE, OR DUCTILE IRON. PVC SEWER PIPE SHALL CONFORM TO ASTM D-3034, SDR35 FOR PIPE SIZES 15-INCH AND SMALLER AND ASTM F679 FOR PIPE SIZES 18- TO 27-INCH. DUCTILE IRON PIPE SHALL BE CLASS 51 OR GREATER UNLESS OTHERWISE NOTED. 12-INCH THROUGH 30-INCH POLYPROPYLENE PIPE (PP) SHALL BE DUAL WALLED, HAVE A SMOOTH INTERIOR AND EXTERIOR CORRUGATIONS AND MEET WSDOT 9-05.24(2). IT SHALL MEET OR EXCEED ASTM F2736. 36-INCH THROUGH 60-INCH PP PIPE SHALL BE TRIPLE WALLED AND MEET WSDOT 9-05.24(2). IT SHALL MEET OR EXCEED ASTM F2764. PP SHALL HAVE A MINIMUM PIPE STIFFNESS OF 46 PII WHEN TESTED IN ACCORDANCE WITH ASTM D2412. TESTING SHALL BE PER ASTM F1417. TRENCHING, BEDDING, AND BACKFILL SHALL BE IN ACCORDANCE WITH CITY STANDARD NO. 06.01.01. MINIMUM COVER ON PVC AND PP PIPE SHALL BE 3.0 FEET. MINIMUM COVER ON DUCTILE IRON PIPE SHALL BE 1.0 FOOT.
- SANITARY SEWER MANHOLE FRAMES AND COVERS SHALL CONFORM TO CITY STANDARD NOS. 06.01.02 AND 06.01.03 COVERS SHALL BE MARKED "SEWER" WITH 2-INCH RAISED LETTERS. MINIMUM WEIGHT OF THE FRAME SHALL BE 210 POUNDS. MINIMUM WEIGHT OF THE COVER SHALL BE 150 POUNDS.
- SANITARY SEWER MANHOLES SHALL CONFORM TO CITY STANDARD NOS. 04.01.01, 04.01.02, 04.01.03 AND 04.01.04. ALL MANHOLES SHALL BE CHANNELLED FOR FUTURE LINES AS SPECIFIED ON THESE PLANS. MANHOLE STEPS AND LADDER SHALL CONFORM TO STANDARD NO. 06.01.04.
- SANITARY SEWER PIPE AND SIDE SEWERS SHALL BE 10 FEET AWAY FROM BUILDING FOUNDATIONS AND/OR ROOF LINES.
- NO SIDE SEWERS SHALL BE CONNECTED TO ANY HOUSE OR BUILDING UNTIL ALL MANHOLES ARE ADJUSTED TO THE FINISHED GRADE OF THE COMPLETED ASPHALT ROADWAY AND THE ASPHALT PATCH AND SEAL AROUND THE RING ARE ACCEPTED.
- ALL PUBLIC SANITARY SEWER MAINS SHALL BE VIDEO INSPECTED PRIOR TO ACCEPTANCE BY THE CITY OF PUYALLUP WATER COLLECTION DIVISION.
- AFTER ALL OTHER UTILITIES ARE INSTALLED AND PRIOR TO ASPHALT WORK, ALL SANITARY PIPES SHALL PASS A LOW PRESSURE AIR TEST IN ACCORDANCE WITH SECTION 7-17 OF THE "STANDARD SPECIFICATIONS". PRODUCTS USED TO SEAL THE INSIDE OF THE PIPE ARE NOT TO BE USED TO OBTAIN THE AIR TEST.
- FOR COMMERCIAL DEVELOPMENTS IN WHICH SOURCES OF GREASE AND/OR OILS MAY BE INTRODUCED TO THE CITY SANITARY SEWER SYSTEM, A CITY APPROVED GREASE INTERCEPTOR SHALL BE INSTALLED DOWNSTREAM FROM THE SOURCE.
- ALL SANITARY SEWER MAINS SHALL BE MANDRELLED.

Abbey Road Group
 Land Development
 Services Company, LLC
 2102 E MAIN AVE, SUITE 109
 PUYALLUP, WA 98372
 P.O. Box 1224, Puyallup, WA 98371
 (253) 435-3699, Fax (253) 446-3159

Abbey Road GROUP

THE CONTRACTOR SHALL VERIFY THE LOCATION OF ALL EXISTING UTILITIES PRIOR TO ANY CONSTRUCTION. AGENCIES INVOLVED SHALL BE NOTIFIED WITHIN A REASONABLE TIME PRIOR TO THE START OF CONSTRUCTION.
CALL BEFORE YOU DIG (811)
WWW.WASHINGTON811.COM

REVISIONS:	CHK	APR	DATE	PER
BY:				
DESIGNED BY:	JMB			
DEVELOPMENT REVIEW:	PRB			
APPROVED BY:	GH			
DRAFTED BY:	HJU			
DATE:	05/17/2022			
SHEET:				



© 2022 Abbey Road Group Land Development Services Company, LLC, Puyallup, WA All rights reserved.
 These drawings, plans, specifications and other documents, including those in electronic form, are owned by Abbey Road Group Land Development Services Company, LLC and it retains all common law, statutory and other reserved rights, including copyrights.
 These drawings, plans, specifications and other documents cannot be copied, distributed, submitted to others (including governmental agencies and lenders) without the express written consent of Abbey Road Group Land Development Services Company, LLC.

EAST TOWN CROSSING

SEC. 26,35/ TWP. 20 N./ RGE. 4 E., W.M.

SANITARY SEWER MASTER PLAN

Sheet duplicated on Pg 14 of 15 of Part 2 Civils.
 (Prelim. Civil Dwg Part 3: Sewer Master Plan, Pg 5 of 6)

APPROVED

BY: CITY OF PUYALLUP
 DEVELOPMENT ENGINEERING

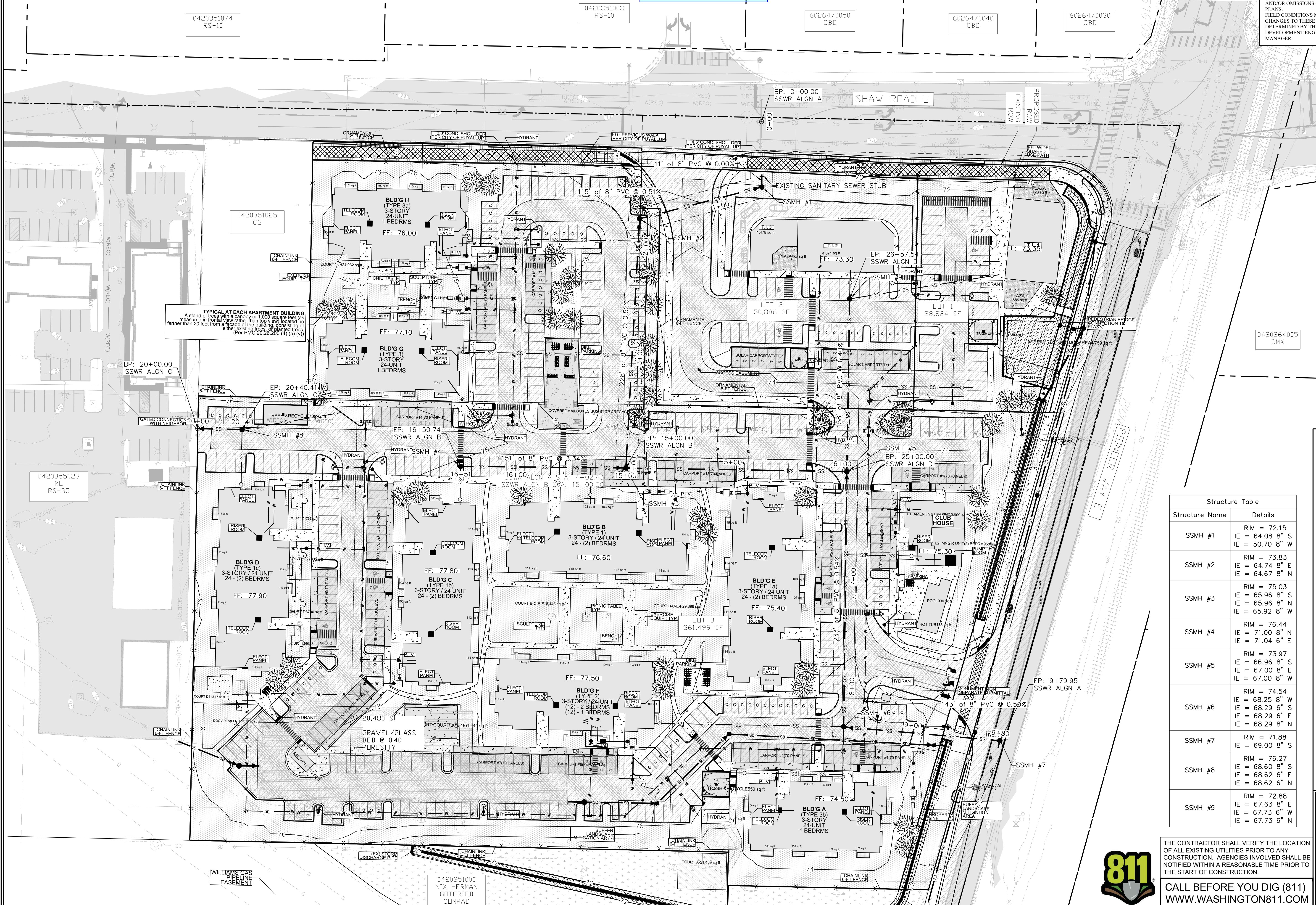
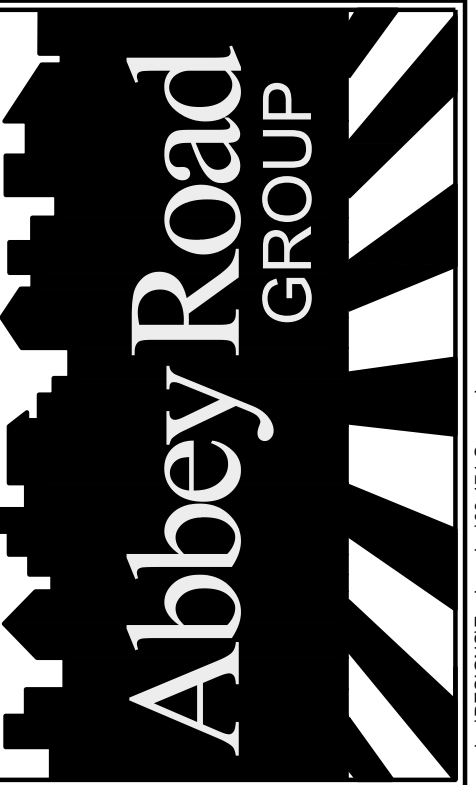
DATE: _____
 NOTE: THIS APPROVAL IS VOID AFTER 180 DAYS FROM APPROVAL DATE. THE CITY WILL NOT BE RESPONSIBLE FOR ERRORS AND/OR OMISSIONS ON THESE PLANS. FIELD CONDITIONS MAY DICTATE CHANGES TO THESE PLANS AS DETERMINED BY THE DEVELOPMENT ENGINEERING MANAGER.

East Town Crossing
 Sanitary Sewer
 Master Plan
 Puyallup, WA

East Town Crossing, LLC.

1001 Shaw Road
 Puyallup, WA 98372

Abbey Road Group
 Land Development
 Services Company, LLC
 2102 E MAIN AVE, SUITE 109
 PUYALLUP, WA 98372
 P.O. Box 1224, Puyallup, WA 98371
 (253) 435-3699, Fax (253) 446-3159



TYPICAL AT EACH APARTMENT BUILDING
 A stand of trees with a canopy of 1,000 square feet (as measured in frontal view rather than top view) located no farther than 20 feet from a facade of the building, consisting of other existing trees, or planted trees.
 (Per PMC 20.26.200 (4) (b) (v))

Structure Table	
Structure Name	Details
SSMH #1	RIM = 72.15 IE = 64.08' 8" S IE = 50.70' 8" W
SSMH #2	RIM = 73.83 IE = 64.74' 8" E IE = 64.67' 8" N
SSMH #3	RIM = 75.03 IE = 65.96' 8" S IE = 65.96' 8" N IE = 65.92' 8" W
SSMH #4	RIM = 76.44 IE = 71.00' 8" N IE = 71.04' 6" E
SSMH #5	RIM = 73.97 IE = 66.96' 8" S IE = 67.00' 8" E IE = 67.00' 8" W
SSMH #6	RIM = 74.54 IE = 68.25' 8" W IE = 68.29' 6" S IE = 68.29' 6" E IE = 68.29' 8" N
SSMH #7	RIM = 71.88 IE = 69.00' 8" S
SSMH #8	RIM = 76.27 IE = 68.60' 8" S IE = 68.62' 6" E IE = 68.62' 6" N
SSMH #9	RIM = 72.88 IE = 67.63' 8" E IE = 67.73' 6" W IE = 67.73' 6" N

THE CONTRACTOR SHALL VERIFY THE LOCATION OF ALL EXISTING UTILITIES PRIOR TO ANY CONSTRUCTION. AGENCIES INVOLVED SHALL BE NOTIFIED WITHIN A REASONABLE TIME PRIOR TO THE START OF CONSTRUCTION.

CALL BEFORE YOU DIG (811)
 WWW.WASHINGTON811.COM



REVISIONS:	CHK: _____	DATE: _____	PER: _____
BY: _____			
JOB #:	06-171-1	DESIGNED BY:	JMB
DEVELOPMENT REVIEW:	PRB	APPROVED BY:	GH
DRAFTED BY:	HPJ	DATE:	05/17/2022
SHEET:			

File: T:\PROJECTS\FILES\ACTIVE\06-171-01 East Town Crossing\DESIGN\engineering\06-171 Sewer.dwg
 Plotter: 0 6/20/22 11:58 AM
 Plotted by: hamson_jacobson

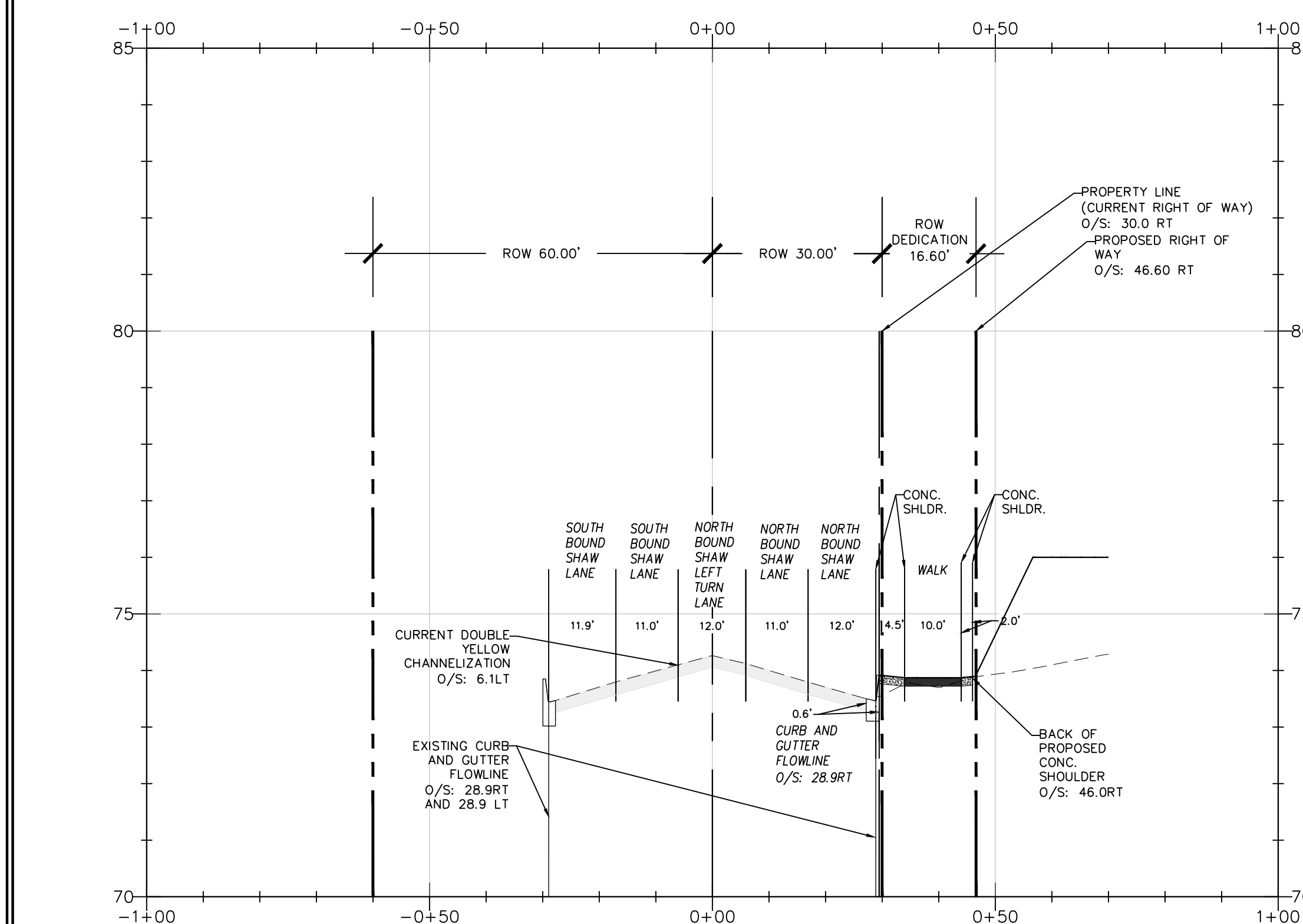
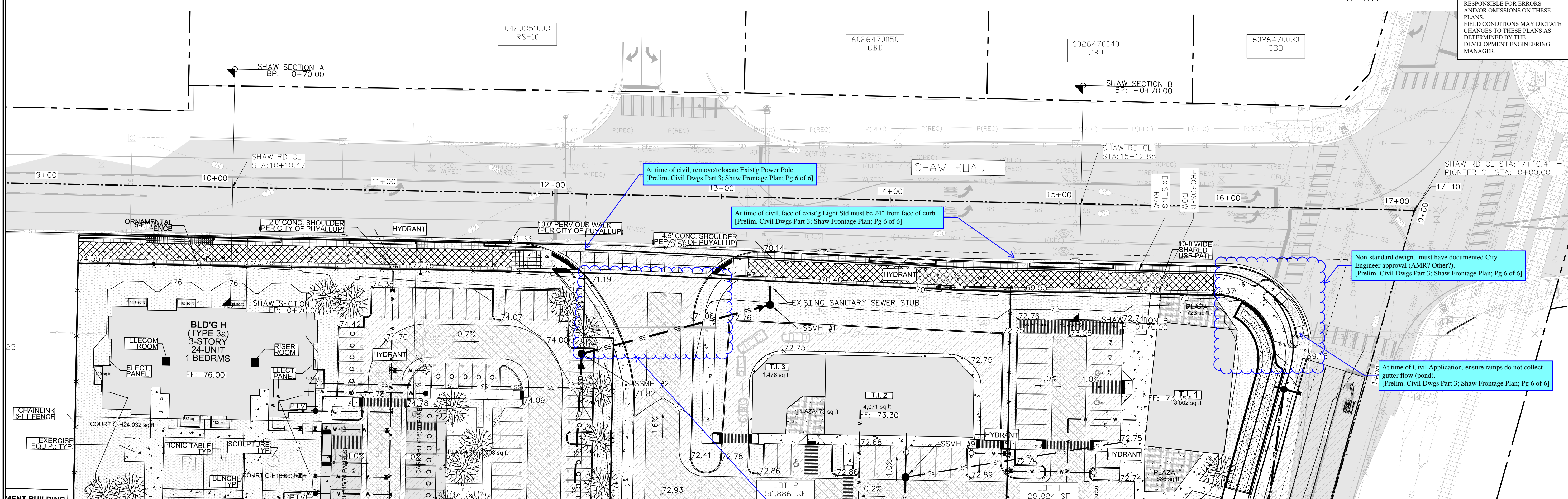
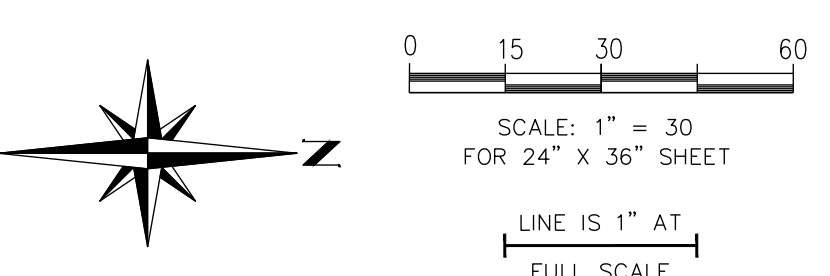
© 2022 Abbey Road Group Land Development Services Company, LLC, Puyallup, WA All rights reserved.
 These drawings, plans, specifications and other documents, including those in electronic form, are owned by Abbey Road Group Land Development Services Company, LLC and it retains all common law, statutory and other reserved rights, including copyrights.
 These drawings, plans, specifications and other documents cannot be copied, distributed, submitted to others (including governmental agencies and lenders) without the express written consent of Abbey Road Group Land Development Services Company, LLC.

EAST TOWN CROSSING

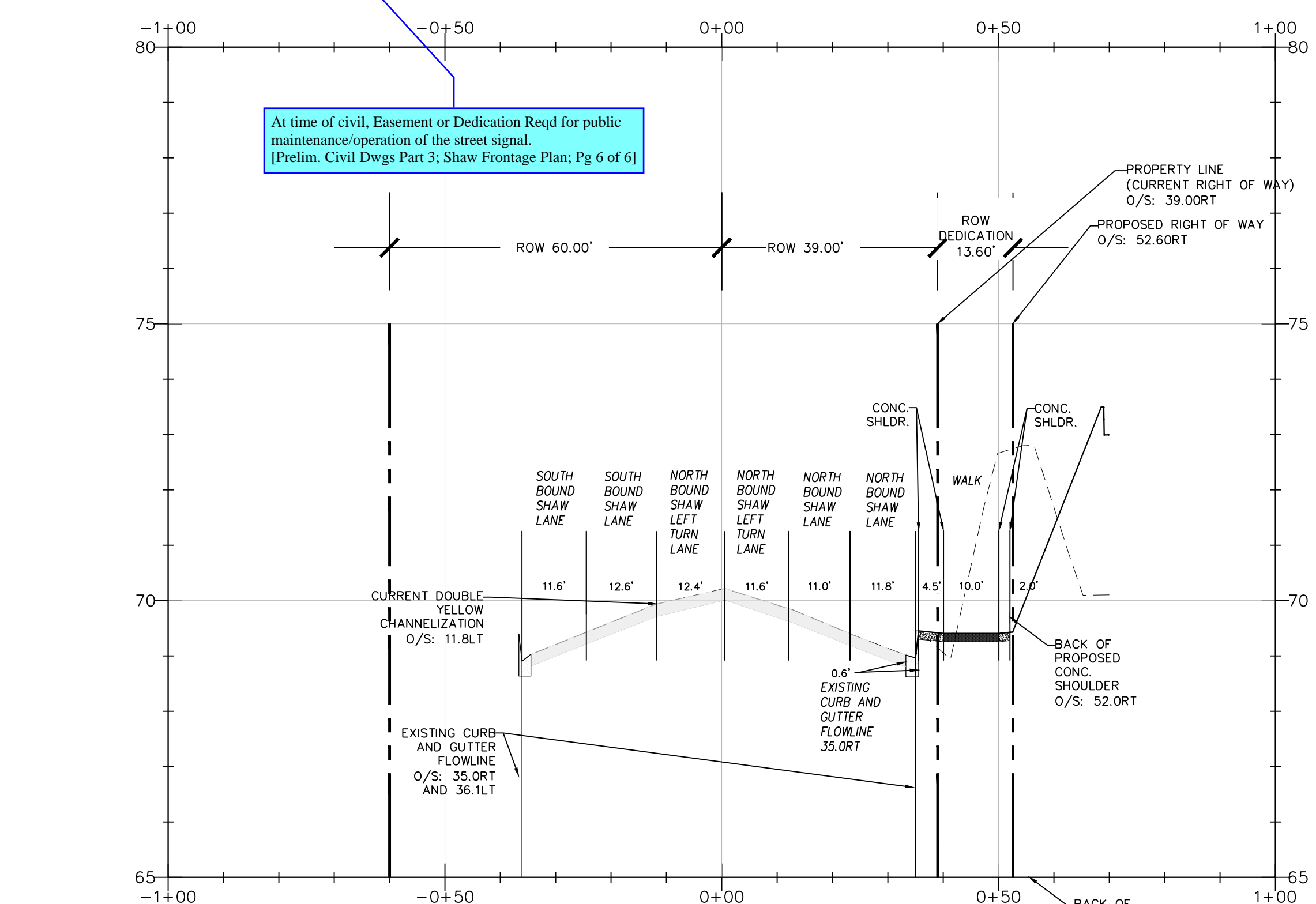
SEC. 26,35/ TWP. 20 N./ RGE. 4 E., W.M.

SHAW FRONTAGE PLAN

APPROVED
 BY: CITY OF PUYALLUP
 DEVELOPMENT ENGINEERING
 DATE: _____
 NOTE: THIS APPROVAL IS VOID AFTER 180 DAYS FROM APPROVAL DATE. THE CITY WILL NOT BE RESPONSIBLE FOR ERRORS AND/OR OMISSIONS ON THESE PLANS. FIELD CONDITIONS MAY DICTATE CHANGES TO THESE PLANS AS DETERMINED BY THE DEVELOPMENT ENGINEERING MANAGER.



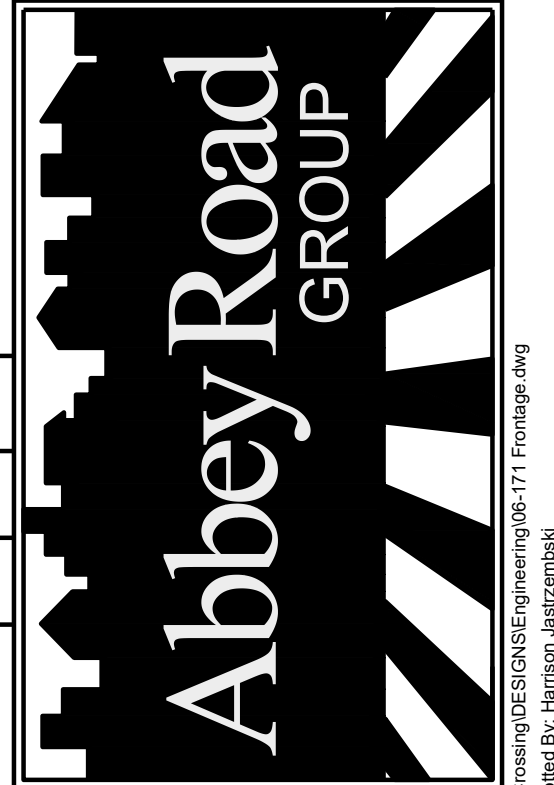
SHAW SECTION A
 HORIZONTAL SCALE: 1" = 20'
 VERTICAL SCALE: 1" = 2'



SHAW SECTION B
 HORIZONTAL SCALE: 1" = 20'
 VERTICAL SCALE: 1" = 2'

East Town Crossing
Shaw Frontage Plan
 Puyallup, WA
 TITLE:
East Town Crossing, LLC.
 FOR:
 1001 Shaw Road
 Puyallup, WA 98372

Abbey Road Group
 Land Development
 Services Company, LLC
 2102 E MAIN AVE, SUITE 109
 PUYALLUP, WA 98372
 P.O. Box 1224, Puyallup, WA 98371
 (253) 435-3699, Fax (253) 446-3159



REVISIONS:	CHK:	APR:	DATE:	PER:
BY:				
JOB #:	06-171-1	DESIGNED BY:	JMB	DEVELOPMENT REVIEW:
APPROVED BY:	GH	DRAFTED BY:	HPJ	DATE:
DATE:	05/17/2022	SHEET:		



THE CONTRACTOR SHALL VERIFY THE LOCATION OF ALL EXISTING UTILITIES PRIOR TO ANY CONSTRUCTION. AGENCIES INVOLVED SHALL BE NOTIFIED WITHIN A REASONABLE TIME PRIOR TO THE START OF CONSTRUCTION.
CALL BEFORE YOU DIG (811)
 WWW.WASHINGTON811.COM

File: T:\PROJECTS\FILES\ACTIVE\06-171-01_East Town Crossing\DESIGN\06-171 Frontage.dwg
 Plotted: 5/16/22 11:54 AM
 Plotted by: Hanson_Janet@ard