



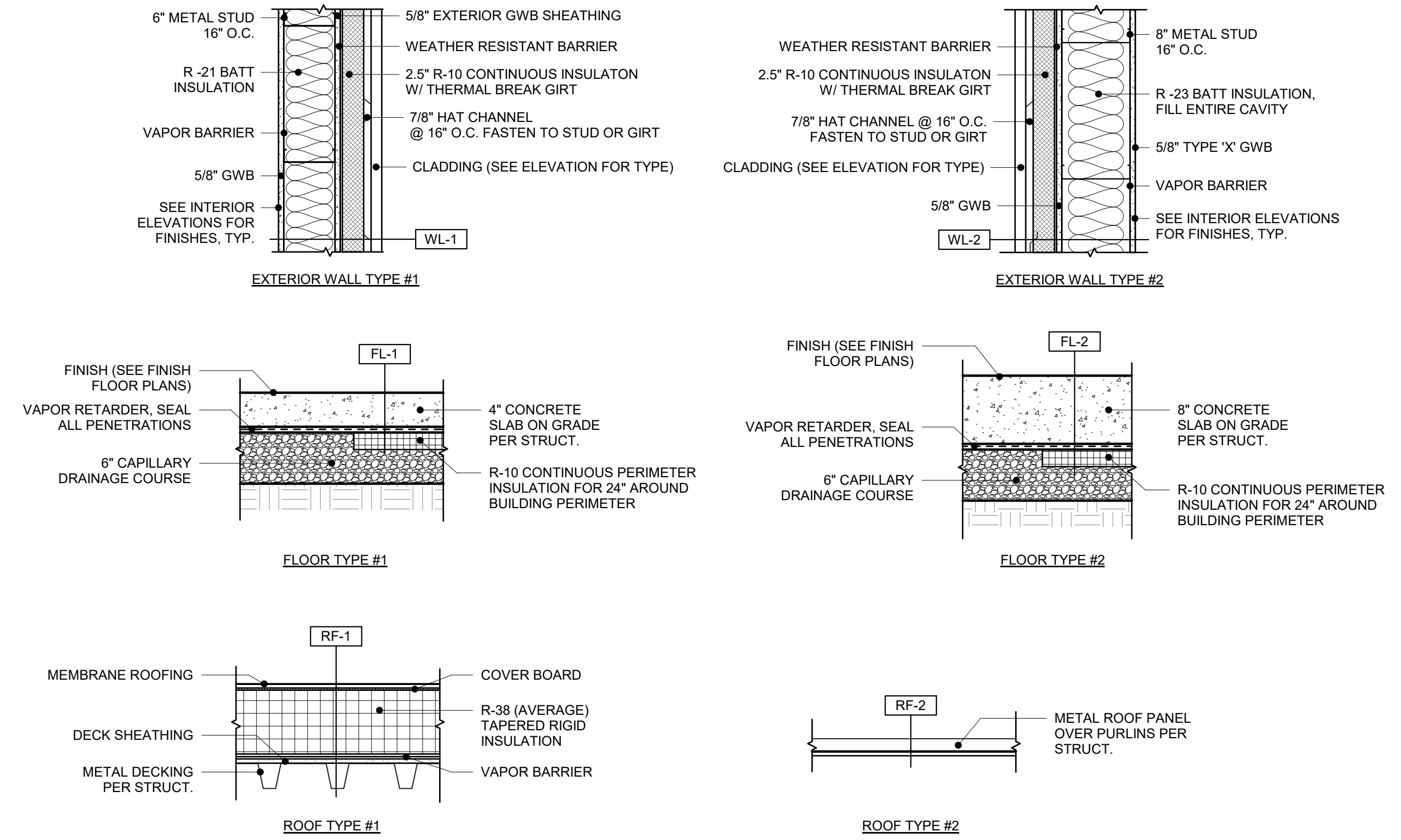
PSE OPERATIONAL TRAINING CENTER

PUYALLUP, WA

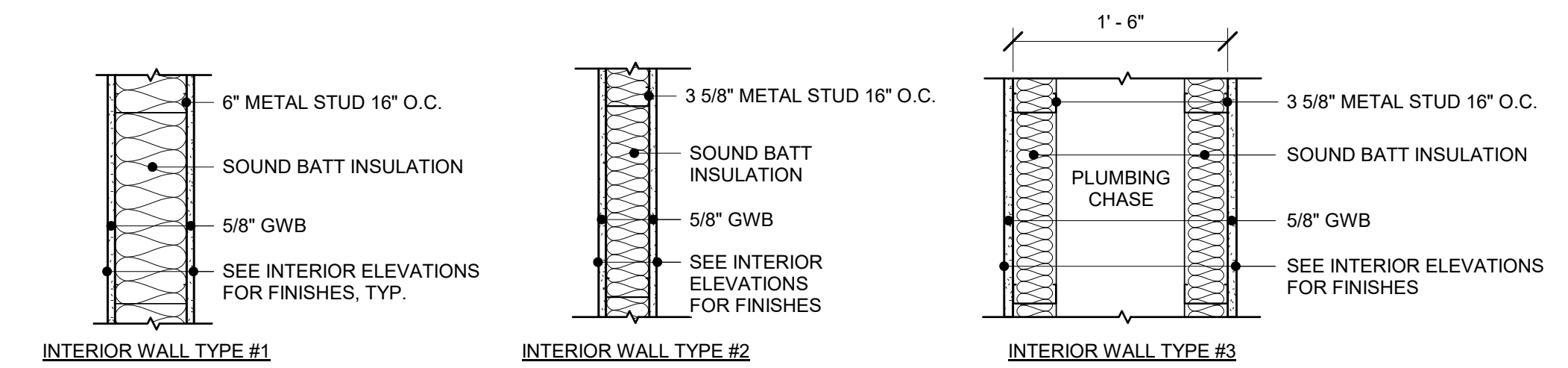
SCHEMATIC DESIGN

07-21-2023





ASSEMBLY TYPES
 1" = 1'-0"



INTERIOR WALL ASSEMBLIES
 1" = 1'-0"

GENERAL NOTES

- ALL INTERIOR WALLS TYPE "1" UNLESS NOTED OTHERWISE. OMIT GWB ON INTERIOR SIDE OF ALL MECHANICAL AND PLUMBING CHASE WALLS, TYP.
- ALL EXTERIOR WALLS TYPE "WL-1" UNLESS NOTED OTHERWISE
- ALL INTERIOR WALLS, ENTIRE ASSEMBLY TO EXTEND TO UNDERSIDE OF ROOF DECK UNLESS NOTED OTHERWISE. PROVIDE MTL. DECK FLUTE CLOSURES.
- SEE EXTERIOR ELEVATIONS AND INTERIOR ELEVATIONS FOR SIDING TYPES/FINISHES AND CONFIGURATIONS, TYP.
- ALL INTERIOR WALLS TO BE FULLY INSULATED WITH ACOUSTIC BATTS, TYP.
- FOR WALL ASSEMBLIES THAT INCLUDE SHEARWALLS, SEE STRUCTURAL.
- IDENTIFICATION MARK SHALL BE APPLIED TO ALL INSULATION MATERIALS AND INSULATION INSTALLED SUCH THAT THE MARK IS READILY OBSERVABLE DURING INSPECTION.
- CONTRACTOR TO UTILIZE INSTALLATION METHODS, THICKNESSES, DENSITIES AND CLEARANCES PER THE INSULATION MANUFACTURER'S REQUIREMENT, TO ACHIEVE THE INTENDED MINIMUM R-VALUE OF ALL INSULATION MATERIALS AS INDICATED ON ASSEMBLY TYPES.
- WHERE TWO OR MORE LAYERS OF RIGID INSULATION WILL BE USED, STAGGER EDGE JOINTS OF PANELS UNLESS SUBMITTED AND APPROVED BY THE ARCHITECT AND THE AUTHORITY HAVING JURISDICTION AS A SPECIAL CONDITION PER MANUFACTURER'S REQUIREMENTS.
- THE AREA UNDER THE ROOFTOP HVAC EQUIPMENT INSIDE OF THE EQUIPMENT CURB SHALL BE INSULATED TO A MINIMUM OF R-13 IN ALL LOCATIONS WHERE THERE ARE NO ROOF OPENINGS FOR DUCTWORK.

SCHEMATIC DESIGN

REV	ISSUED FOR	DATE

NORTH PLAN
 SCALE:
 As indicated

**PSE
 OPERATIONAL
 TRAINING
 CENTER**

ASSEMBLIES

PROJECT#	202202.06
DRAWN	MR CHECK: AK
ISSUED:	7/21/23

G0.01

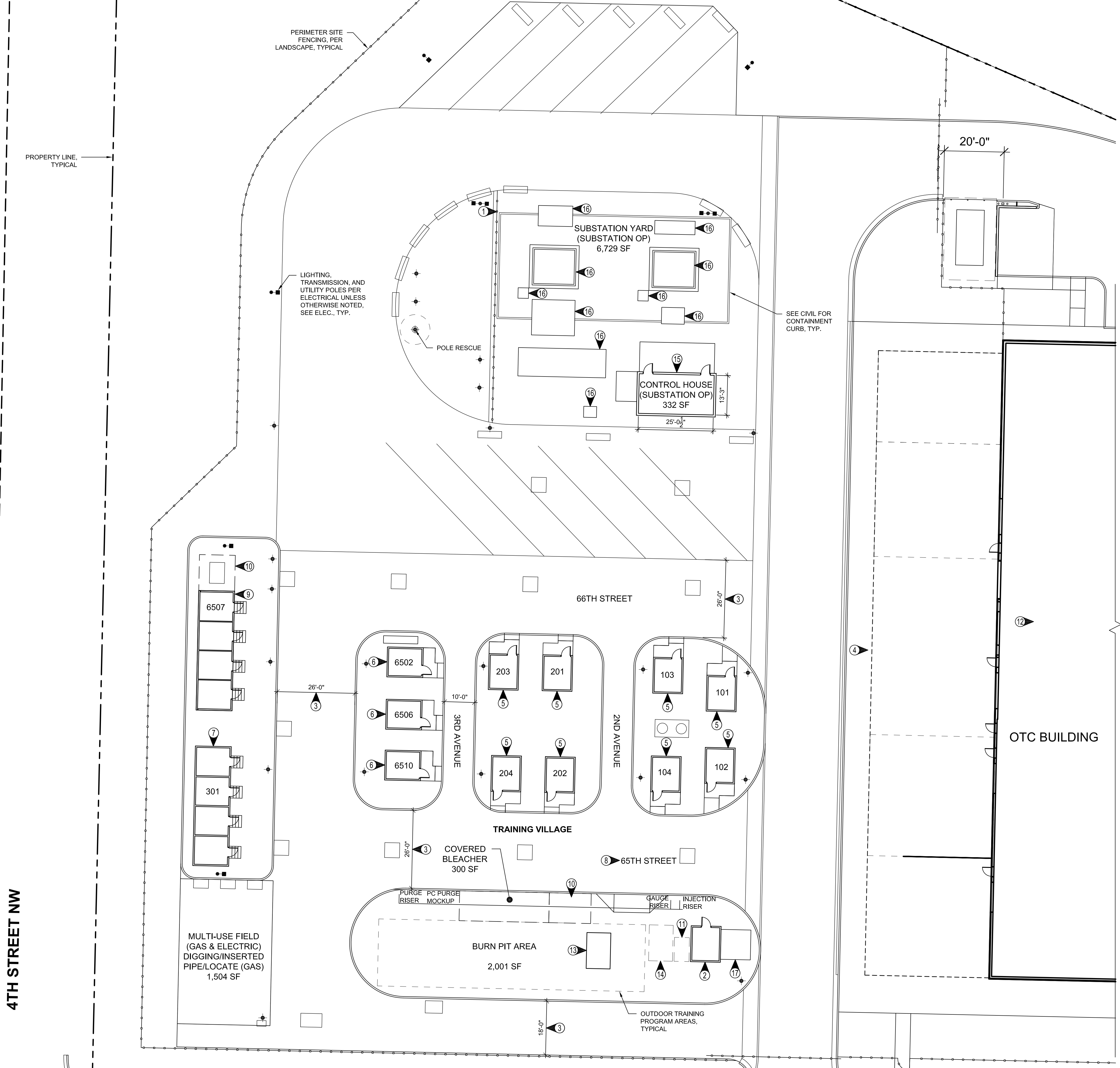


ARCHITECTURE | INTERIOR DESIGN
zervasgroup.com
209 Prospect Street
Bellingham, WA 98225
360.734.4744

GENERAL NOTES:

1. THIS SITE PLAN WAS GENERATED BASED ON THE INFORMATION GATHERED DURING THE PROGRAMMING PHASE, END USER MEETINGS, ROOM DATA SHEETS, THE FF&E SPREADSHEET, AND PSE COMMENTS. THE SITE PLAN SHOWS THE MAIN PROGRAM AREAS AND BUILDINGS, AND THE KNOWN SITE CONSTRAINTS. SEE THE ROOM DATA SHEETS AND THE FF&E SPREADSHEET FOR MORE DETAILED REQUIREMENTS AND INFORMATION. THE SITE PLAN WILL BE FURTHER DEVELOPED IN THE UPCOMING DESIGN PHASES (DESIGN DEVELOPMENT, AND CONSTRUCTION DOCUMENTS).

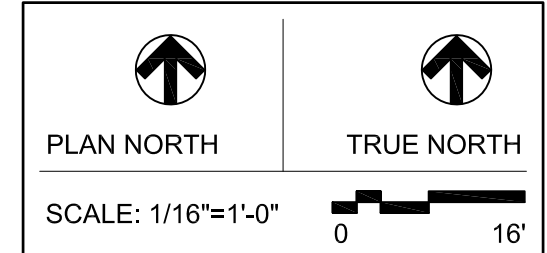
- 1 SUBSTATION FENCING, PER LANDSCAPE
- 2 COMPRESSOR BUILDING
- 2X4 WOOD STUDS @ 24" O.C.
- FIBER CEMENT LAP SIDING OVER PLY SUBSTRATE
FLOOR ASSEMBLY:
- SLAB ON GRADE
ROOF ASSEMBLY:
- WOOD TRUSS
- COMPOSITION SHINGLE SYSTEM OVER PLYWOOD SUBSTRATE PER STRUCT.
- 3 DRIVE AISLES IN THE OUTDOOR VILLAGE. PSE WILL NEED TO PROVIDE THE SPECIFICATIONS FOR THE LARGEST VEHICLE THEY PLAN TO USE IN THE VILLAGE, SO THE LANE WIDTHS AND RADIUSSES CAN BE DESIGNED ACCORDINGLY. FIRE LANES ARE TYPICALLY 20'-25' DEPENDING ON ONE-WAY OR TWO-WAY TRAFFIC.
- 4 LARGE VEHICLE PARALLEL PARKING AND LOADING ZONES ALONG WEST SIDE OF THE OTC BUILDING
- 5 RESIDENTIAL "VILLAGE" UNITS
WALL ASSEMBLY:
- 2X4 WOOD STUDS @ 24" O.C.
- FIBER CEMENT LAP SIDING OVER PLY SUBSTRATE
FLOOR ASSEMBLY:
- 5/8" AC PLYWOOD OVER 2X6 FLOOR JOISTS 12" O.C.
ROOF ASSEMBLY:
- WOOD TRUSS
- COMPOSITION SHINGLE SYSTEM OVER PLYWOOD SUBSTRATE PER STRUCT.
STAIR/DECK/RAIL:
- EXTERIOR PRESSURE TREATED STAIR/DECK/RAILING W/ COMPOSITE DECKING
- 6 COMMERCIAL "VILLAGE" UNITS
WALL ASSEMBLY:
- 2X4 WOOD STUDS @ 24" O.C.
- FIBER CEMENT LAP SIDING OVER PLY SUBSTRATE
FLOOR ASSEMBLY:
- 5/8" AC PLYWOOD OVER 2X6 FLOOR JOISTS 12" O.C.
ROOF ASSEMBLY:
- WOOD TRUSS
- COMPOSITION SHINGLE SYSTEM OVER PLYWOOD SUBSTRATE PER STRUCT.
STAIR/DECK/RAIL:
- EXTERIOR PRESSURE TREATED STAIR/DECK/RAILING W/ COMPOSITE DECKING
- 7 RESIDENTIAL MULTI-FAMILY 4-PLEX BUILDING WITH FOUR METER MANIFOLD TO SIMULATE METER MIXES & MNS TRAINING
WALL ASSEMBLY:
- 2X4 WOOD STUDS @ 24" O.C.
- FIBER CEMENT LAP SIDING OVER PLY SUBSTRATE
FLOOR ASSEMBLY:
- 5/8" AC PLYWOOD OVER 2X6 FLOOR JOISTS 12" O.C.
ROOF ASSEMBLY:
- WOOD TRUSS
- COMPOSITION SHINGLE SYSTEM OVER PLYWOOD SUBSTRATE PER STRUCT.
STAIR/DECK/RAIL:
- EXTERIOR PRESSURE TREATED STAIR/DECK/RAILING W/ COMPOSITE DECKING
- 8 "VILLAGE STREETS" TO RECEIVE STREET SIGNAGE
- 9 MULTI-UNIT COMMERCIAL 4-PLEX BUILDING
WALL ASSEMBLY:
- 2X4 WOOD STUDS @ 24" O.C.
- FIBER CEMENT LAP SIDING OVER PLY SUBSTRATE
FLOOR ASSEMBLY:
- 5/8" AC PLYWOOD OVER 2X6 FLOOR JOISTS 12" O.C.
ROOF ASSEMBLY:
- WOOD TRUSS
- COMPOSITION SHINGLE SYSTEM OVER PLYWOOD SUBSTRATE PER STRUCT.
STAIR/DECK/RAIL:
- EXTERIOR PRESSURE TREATED STAIR/DECK/RAILING W/ COMPOSITE DECKING
- 10 COVERED MANIFOLD SETS
- 11 PC HIGH PRESSURE MOCKUP FOOTPRINT AND CLEARANCES ON GRAVEL SURFACING
- 12 GAS HVAC MOCKUP FOR SIMULATION TRAINING
- 13 A 12X8X5' VAULT FOR PLICO TRAINING
- 14 6" HP BALL VALVE DEMO & 4" RISER FLANGE CONNECTIONS MOCKUP FOOTPRINT AND CLEARANCES ON GRAVEL SURFACING
- 15 CONTROL HOUSE WALL ASSEMBLY
- 8" CMU
- R-10 (2.5") CONTINUOUS INSULATION
- VAPOR BARRIER
- 3/4" PLYWOOD FINISH
- 16 SUBSTATION EQUIPMENT BY PSE. PROVIDE CONCRETE PADS FOR SUBSTATION EQUIPMENT PER PSE SUBSTATION TYPICAL DETAILS. SEE CIVIL AND STRUCT.
- 17 10'x10'x6" CONCRETE PAD FOR NITROGEN BOTTLE STORAGE



1 OUTDOOR TRAINING SITE PLAN
SCALE: 1/16"=1'-0"

SCHEMATIC DESIGN

REV	ISSUED FOR	DATE
1	LAND USE	08/18/2023

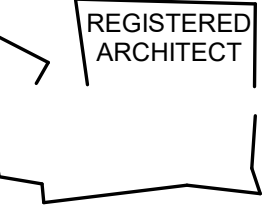


PSE - OPERATIONAL TRAINING CENTER

OUTDOOR TRAINING SITE PLAN

PROJECT No: 202202.06
DRAWN BY: MR
CHECKED BY: AK
DATE ISSUED: 07/21/23

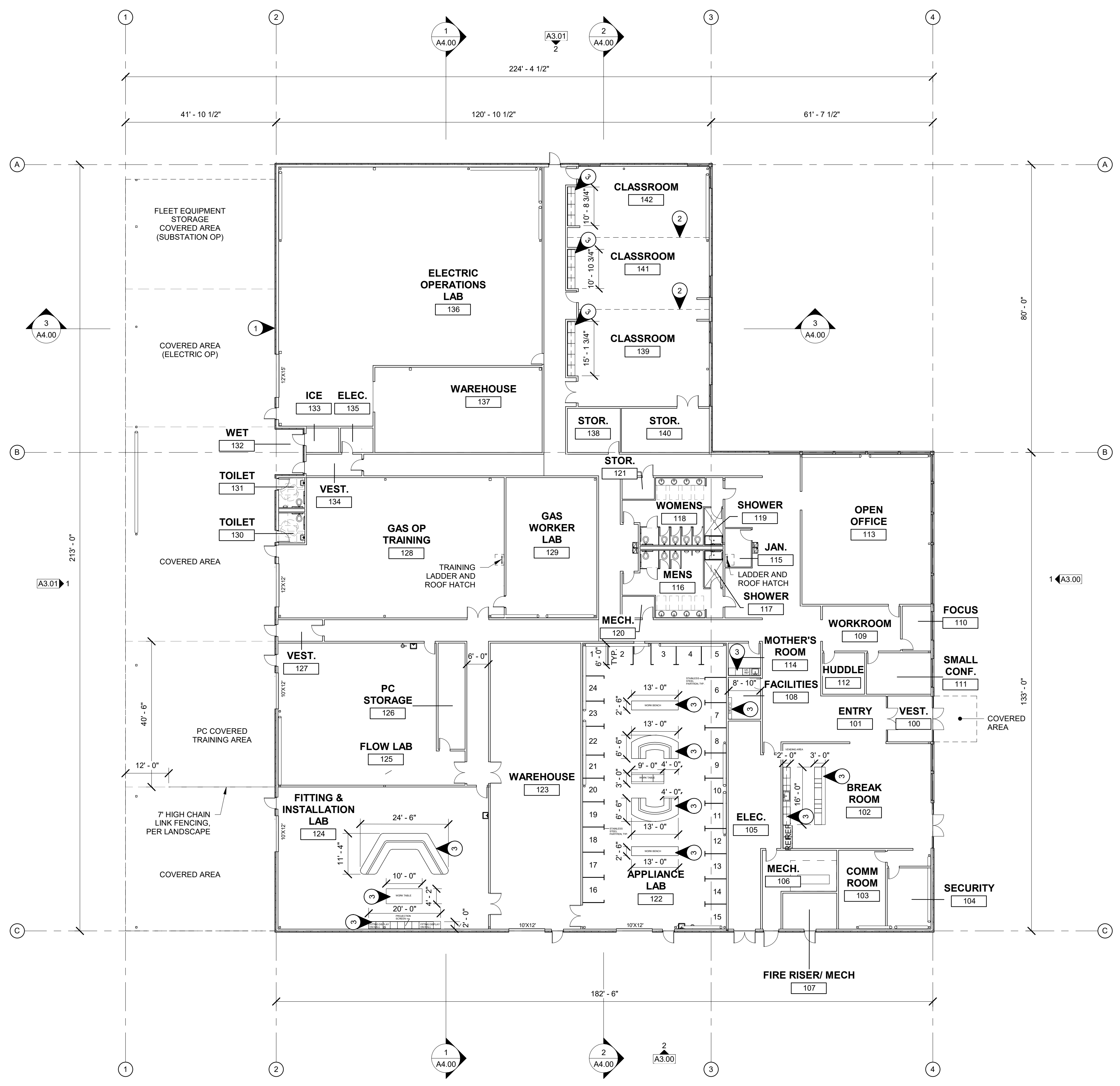
A1.02



GENERAL NOTES

1. ALL INTERIOR WALLS TYPE "1" UNLESS NOTED OTHERWISE. OMIT GWB ON INTERIOR SIDE OF ALL MECHANICAL AND PLUMBING CHASE WALLS, TYP.
2. WALL DIMENSIONS ARE TO FACE OF STUD AND CONCRETE UNLESS NOTED OTHERWISE, TYP.
3. WHERE DOORS ARE SHOWN NEAR ADJACENT WALL PROVIDE 4" FROM DOOR OPENING TO FACE OF STUD OR CONCRETE UNLESS NOTED OTHERWISE, TYP.
4. FOR CLOCK/SPEAKERS PROVIDE BLOCKING/FRAMING PER MFR., SEE ELEC. FOR DEVICES AND LOCATION, SEE STRUCT. FOR TYPICAL OPENING REQUIREMENTS.

- 1 ELECTRIC FORKLIFT CHARGING STATION
- 2 MOTORIZED OPERABLE WALL
- 3 MANUFACTURED CASEWORK



1 Floor Plan
 1/16" = 1'-0"

SCHEMATIC DESIGN

REV	ISSUED FOR	DATE

NORTH PLAN

SCALE:
 1/16" = 1'-0"

PSE OPERATIONAL TRAINING CENTER

OTC BUILDING FLOOR PLAN

PROJECT#	202202.06
DRAWN	MR CHECK
ISSUED	7/21/23

A2.01