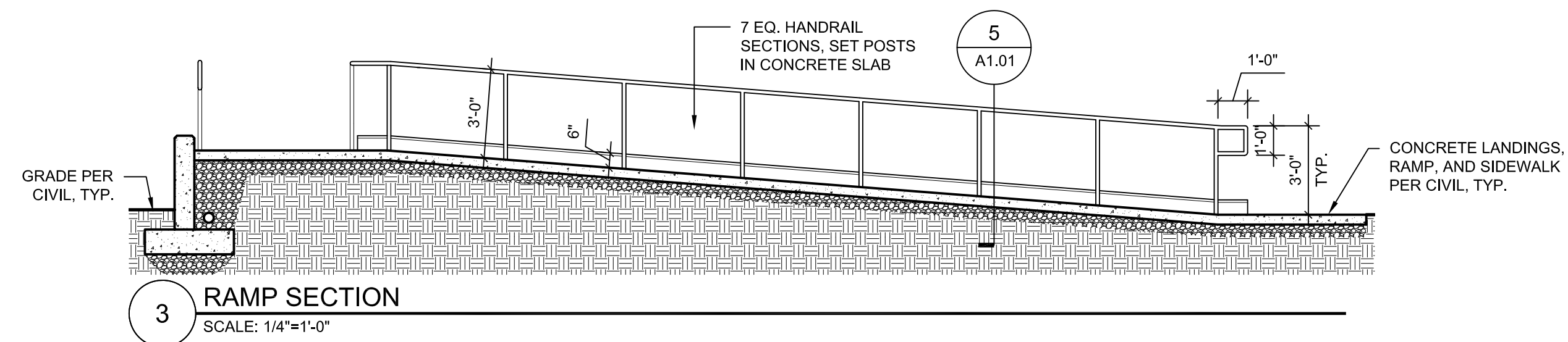
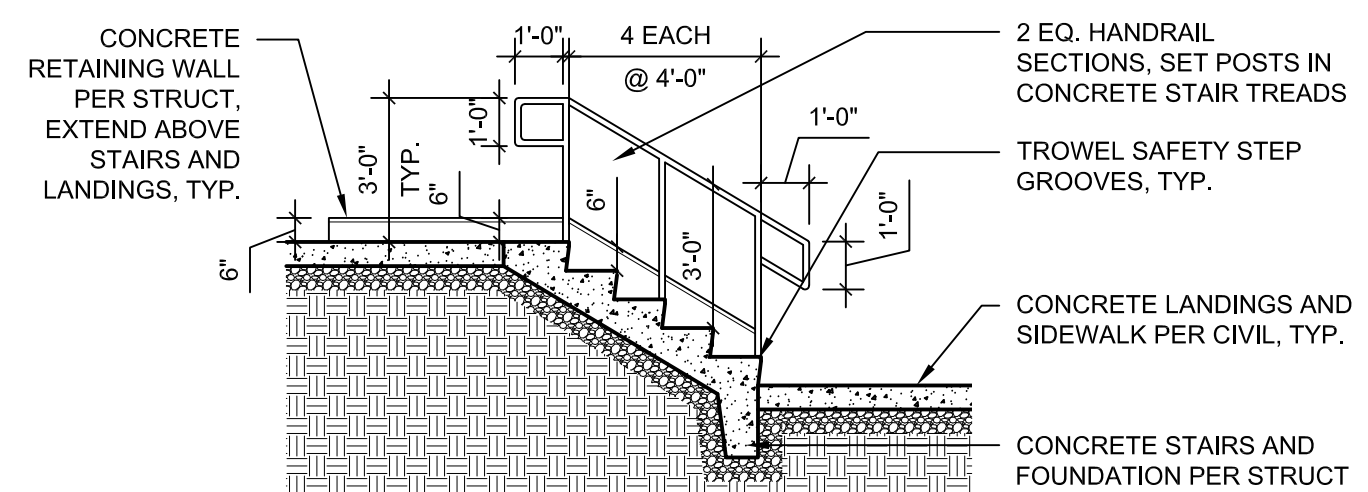


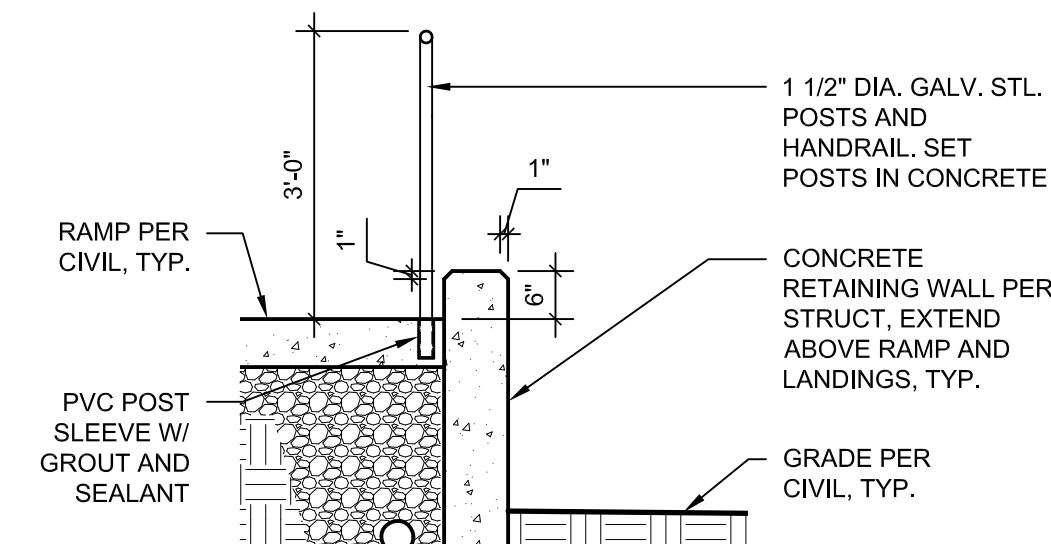
2 ENLARGED RAMP AND STAIR PLAN
 SCALE: 1/4"=1'-0"



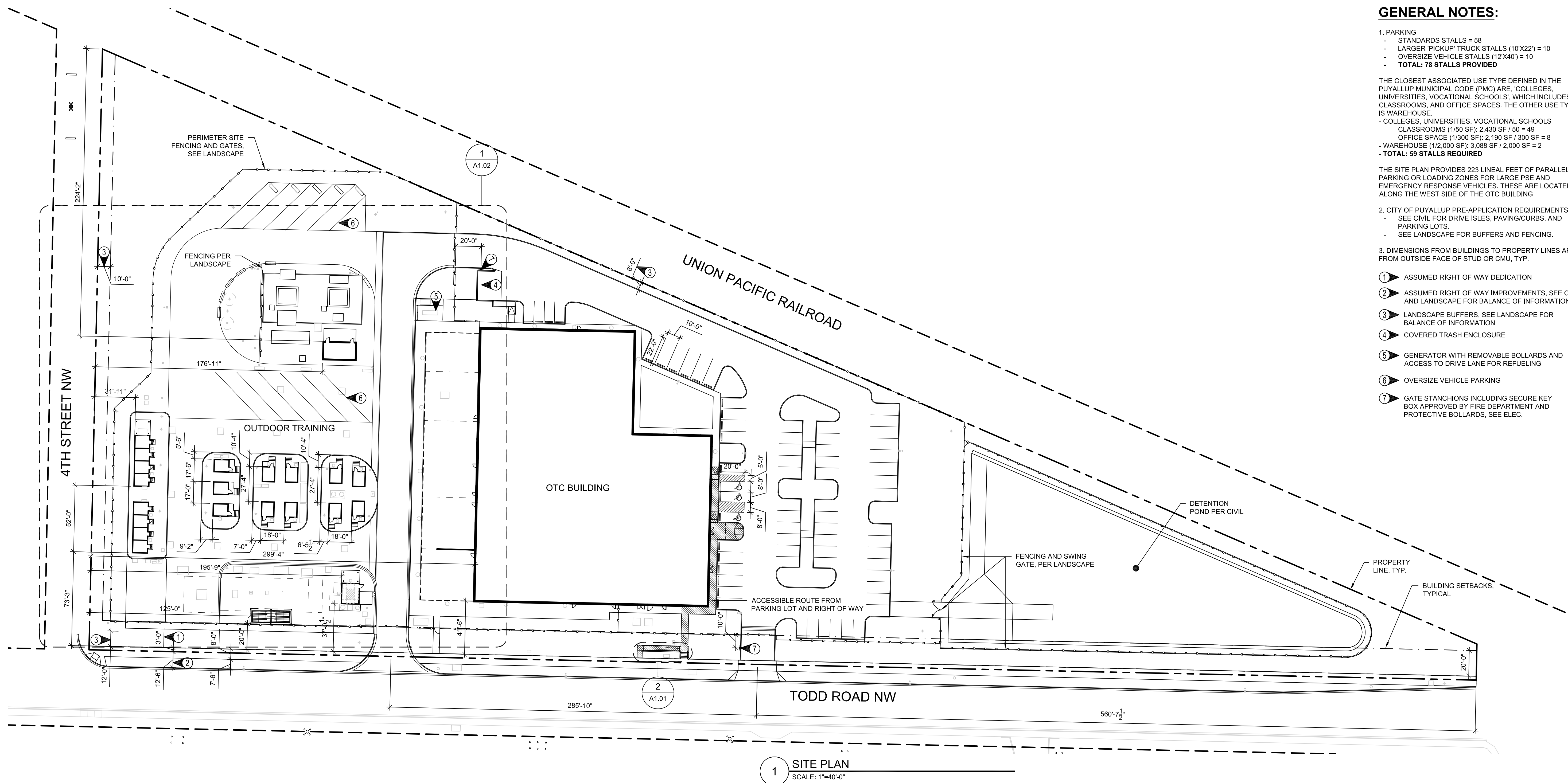
3 RAMP SECTION
 SCALE: 1/4"=1'-0"



4 STAIR SECTION
 SCALE: 1/4"=1'-0"



5 HANDRAIL DETAIL @ RAMP, STAIR SIM.
 SCALE: 1/2"=1'-0"



1 SITE PLAN
 SCALE: 1"=40'-0"

GENERAL NOTES:

1. PARKING
 - STANDARDS STALLS = 58
 - LARGER PICKUP TRUCK STALLS (10'X22') = 10
 - OVERSIZE VEHICLE STALLS (12'X40') = 10
 - TOTAL: 78 STALLS PROVIDED
- THE CLOSEST ASSOCIATED USE TYPE DEFINED IN THE PUYALLUP MUNICIPAL CODE (PMC) ARE, 'COLLEGES, UNIVERSITIES, VOCATIONAL SCHOOLS', WHICH INCLUDES CLASSROOMS, AND OFFICE SPACES. THE OTHER USE TYPE IS WAREHOUSE.
 - COLLEGES, UNIVERSITIES, VOCATIONAL SCHOOLS CLASSROOMS (1/50 SF): 2,430 SF / 50 = 49
 - OFFICE SPACE (1/300 SF): 2,190 SF / 300 SF = 8
 - WAREHOUSE (1/2,000 SF): 3,088 SF / 2,000 SF = 2
 - TOTAL: 59 STALLS REQUIRED
- THE SITE PLAN PROVIDES 223 LINEAL FEET OF PARALLEL PARKING OR LOADING ZONES FOR LARGE PSE AND EMERGENCY RESPONSE VEHICLES. THESE ARE LOCATED ALONG THE WEST SIDE OF THE OTC BUILDING
2. CITY OF PUYALLUP PRE-APPLICATION REQUIREMENTS
 - SEE CIVIL FOR DRIVE ISLES, PAVING/CURBS, AND PARKING LOTS.
 - SEE LANDSCAPE FOR BUFFERS AND FENCING.
3. DIMENSIONS FROM BUILDINGS TO PROPERTY LINES ARE FROM OUTSIDE FACE OF STUD OR CMU, TYP.
 - ① ASSUMED RIGHT OF WAY DEDICATION
 - ② ASSUMED RIGHT OF WAY IMPROVEMENTS. SEE CIVIL AND LANDSCAPE FOR BALANCE OF INFORMATION
 - ③ LANDSCAPE BUFFERS. SEE LANDSCAPE FOR BALANCE OF INFORMATION
 - ④ COVERED TRASH ENCLOSURE
 - ⑤ GENERATOR WITH REMOVABLE BOLLARDS AND ACCESS TO DRIVE LANE FOR REFUELING
 - ⑥ OVERSIZE VEHICLE PARKING
 - ⑦ GATE STANCHIONS INCLUDING SECURE KEY BOX APPROVED BY FIRE DEPARTMENT AND PROTECTIVE BOLLARDS, SEE ELEC.

PERMIT SET

REV	ISSUED FOR	DATE

PLAN NORTH TRUE NORTH
 SCALE: AS NOTED 0' X'

PSE - OPERATIONAL TRAINING CENTER

OVERALL SITE PLAN

PROJECT No: 202202.06
 DRAWN BY: MR
 CHECKED BY: AK
 DATE ISSUED: 12/05/23

A1.01