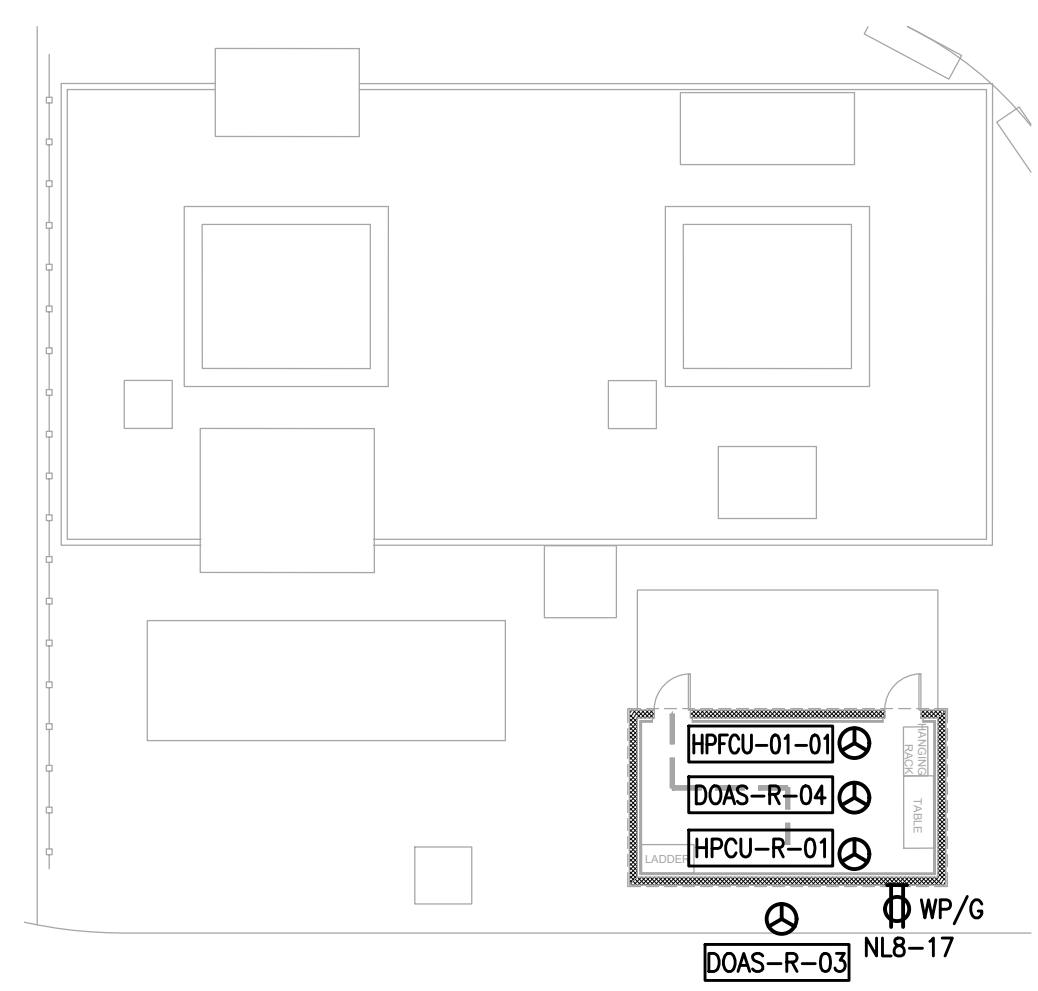


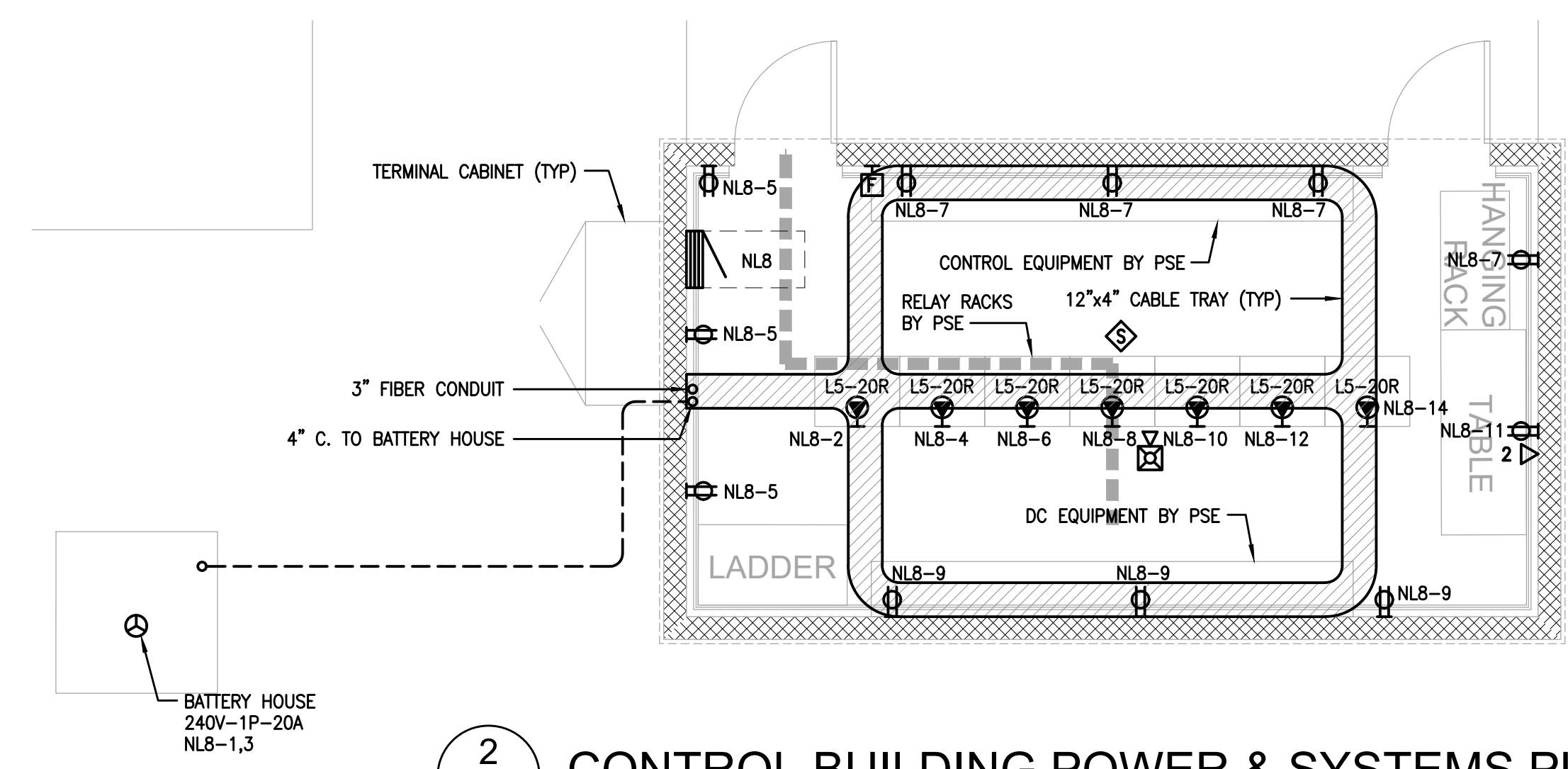


**FLAG NOTES**

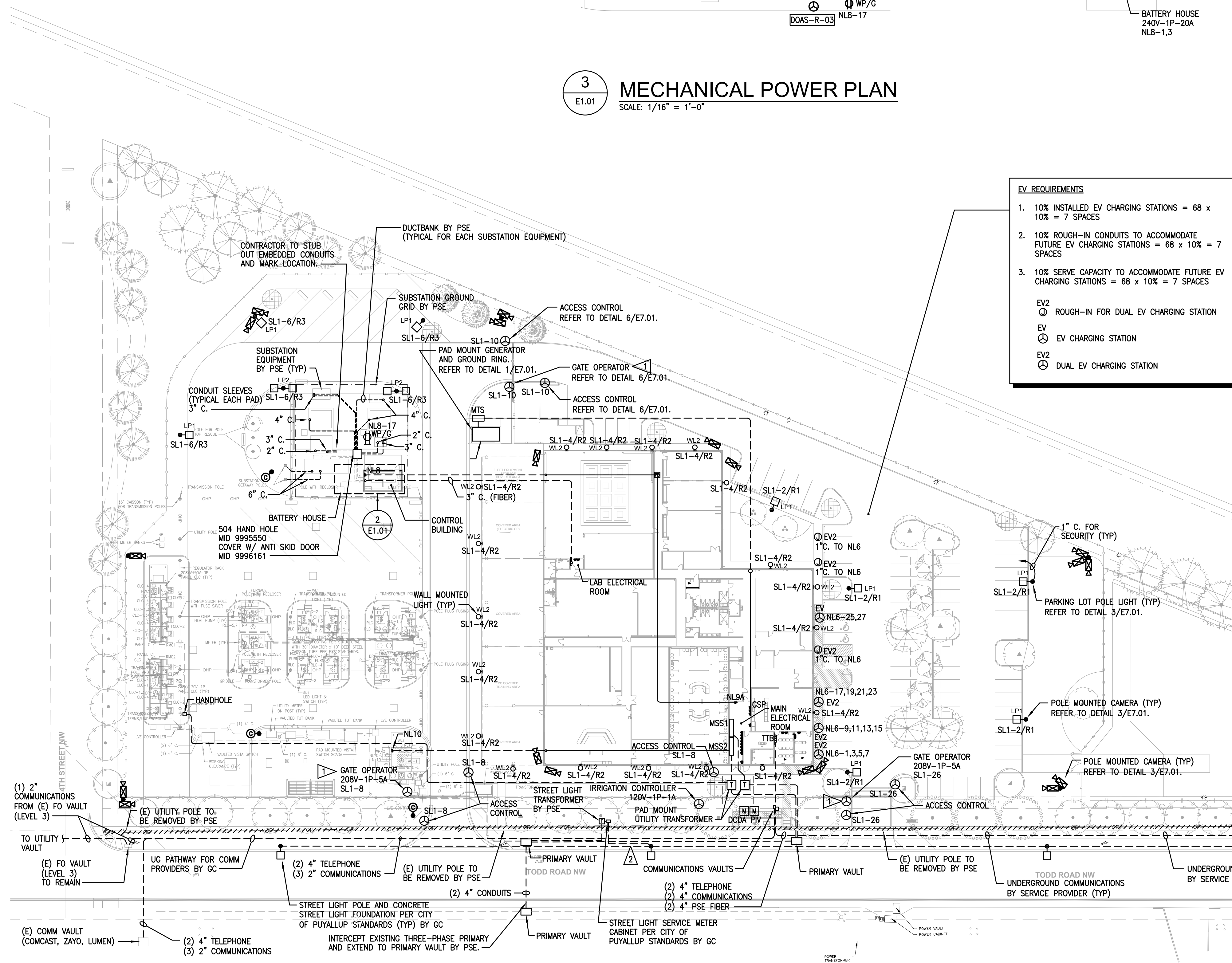
- 1 PROVIDE OPTICOM ELECTRIC GATES WITH MANUAL OVERRIDE.
- 2 PROVIDE JOINT TRENCH FOR ALL DRY UTILITIES INCLUDING PRIMARY, COMMUNICATIONS AND STREET LIGHTING.



**3 MECHANICAL POWER PLAN**  
 SCALE: 1/16" = 1'-0"

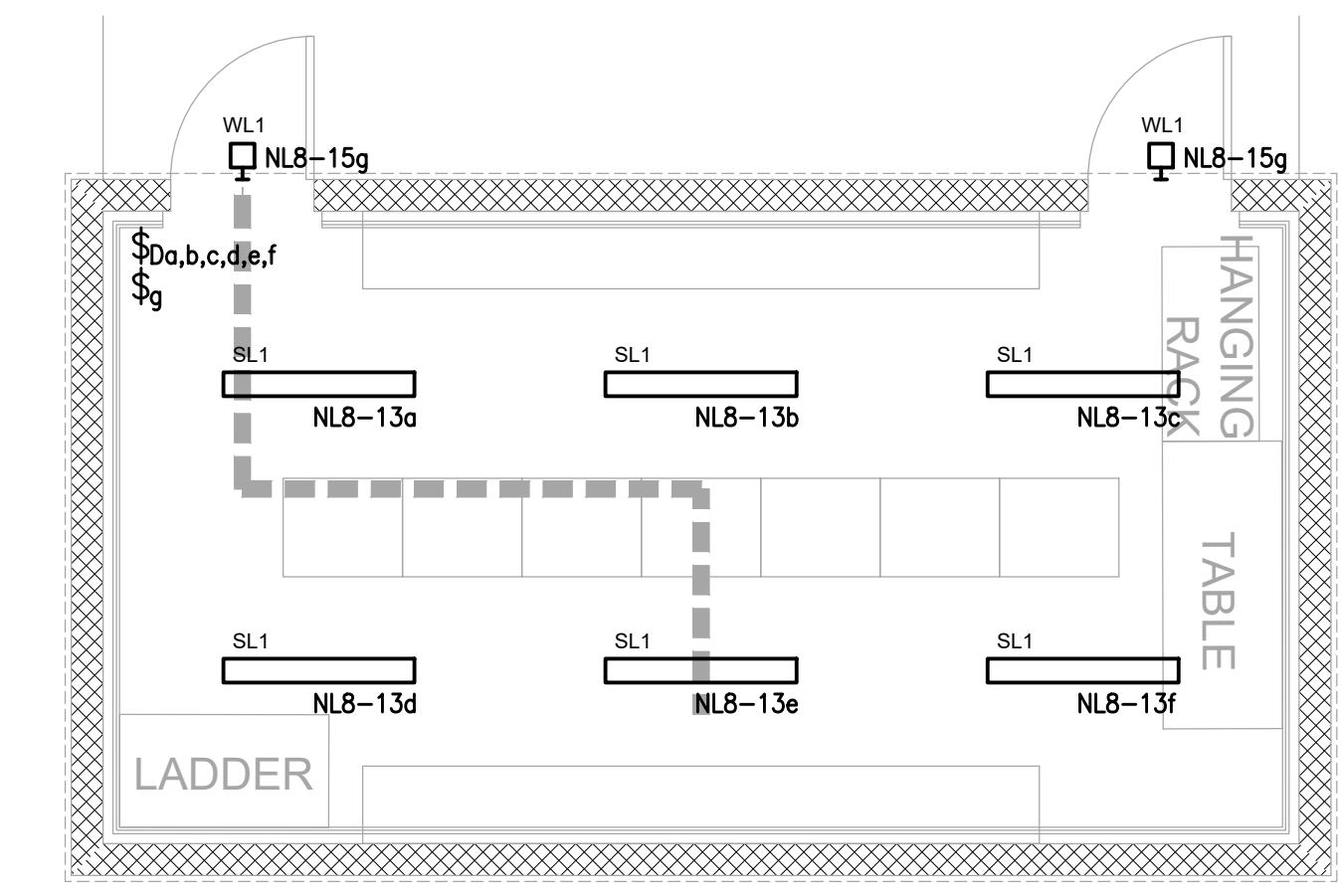


**2 CONTROL BUILDING POWER & SYSTEMS PLAN**  
 SCALE: 1/4" = 1'-0"



**1 OVERALL ELECTRICAL SITE PLAN**  
 SCALE: 1" = 40'-0"

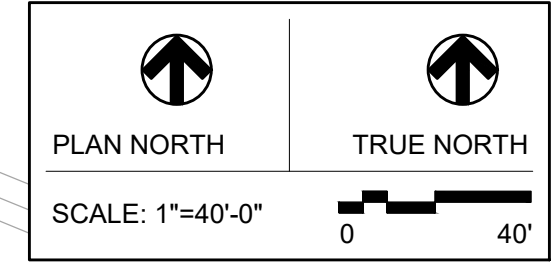
- EV REQUIREMENTS**
1. 10% INSTALLED EV CHARGING STATIONS = 68 x 10% = 7 SPACES
  2. 10% ROUGH-IN CONDUITS TO ACCOMMODATE FUTURE EV CHARGING STATIONS = 68 x 10% = 7 SPACES
  3. 10% SERVE CAPACITY TO ACCOMMODATE FUTURE EV CHARGING STATIONS = 68 x 10% = 7 SPACES
- EV2  
 ○ ROUGH-IN FOR DUAL EV CHARGING STATION  
 ○ EV CHARGING STATION  
 ○ DUAL EV CHARGING STATION



**4 CONTROL BUILDING LIGHTING PLAN**  
 SCALE: 1/4" = 1'-0"

**PERMIT SET**

REV	ISSUED FOR	DATE



**PSE - OPERATIONAL TRAINING CENTER**

**OVERALL ELECTRICAL SITE PLAN**

PROJECT No: 221158  
 DRAWN BY: RMF  
 CHECKED BY: CJB  
 DATE ISSUED: 12/05/23

**E1.01**