

CASCADE CHRISTIAN SCHOOL CAMPUS - ELEMENTARY & JR. HIGH PORTABLES

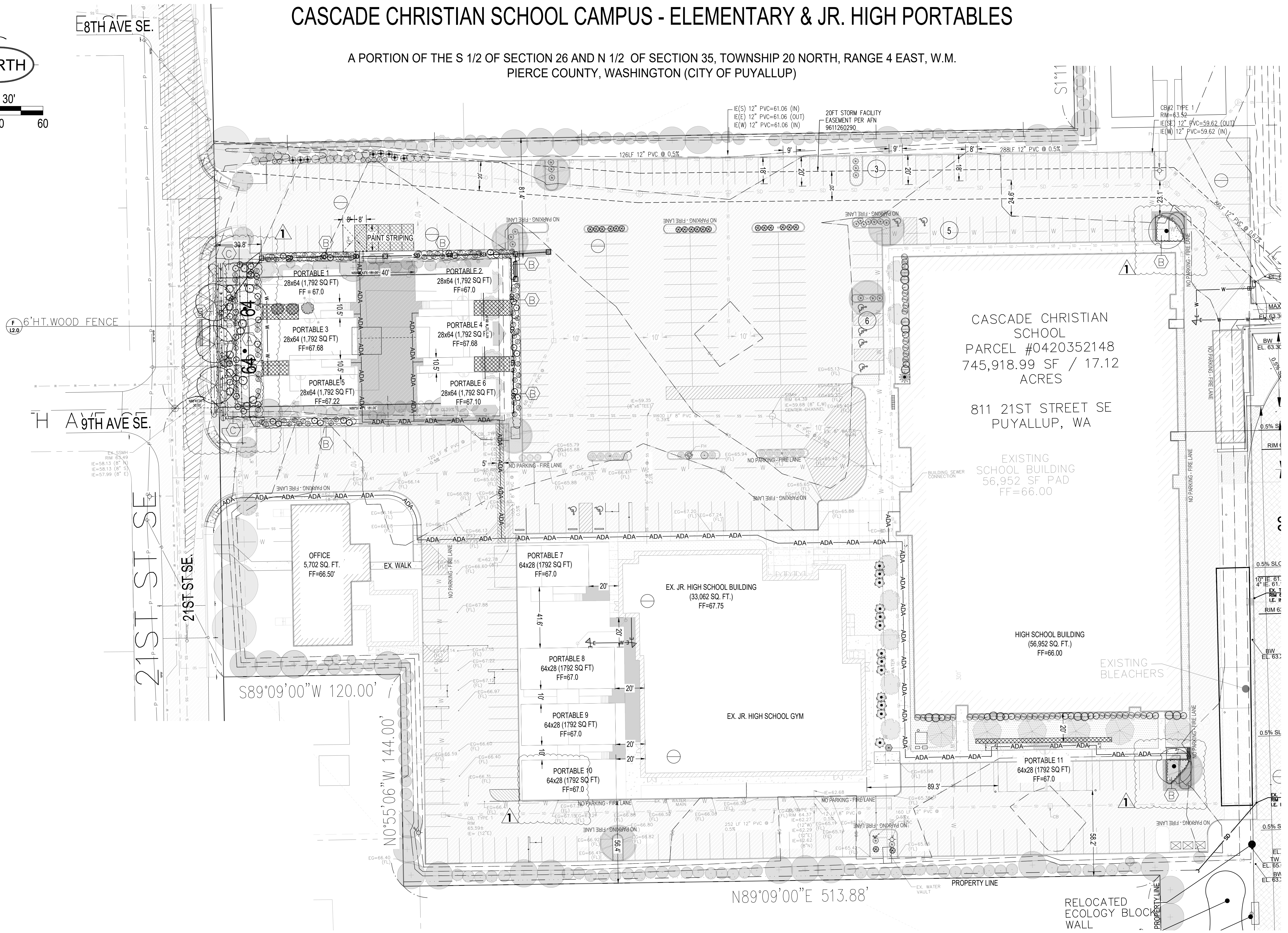
A PORTION OF THE S 1/2 OF SECTION 26 AND N 1/2 OF SECTION 35, TOWNSHIP 20 NORTH, RANGE 4 EAST, W.M.
PIERCE COUNTY, WASHINGTON (CITY OF PUYALLUP)

JGM
LANDSCAPE ARCHITECTS
INCORPORATED P.S.
LANDSCAPE ARCHITECTURE
URBAN DESIGN
SITE PLANNING
PARKS AND
RECREATION PLANNING
12610 NE 104TH ST.
KIRKLAND WA 98033
PH: 425.454.5723
FX: 425.822.3525
E: jgm@jgm-inc.com

CASCADE CHRISTIAN
ELEMENTARY SCHOOLS
PORTABLE PLACEMENTS
811 21ST ST. SE,
PUYALLUP, WA

REVISIONS/DRAWING ISSUES:
1 3-5-2025

Drawn by:
Checked by:



CASCADE CHRISTIAN
SCHOOL
PARCEL #0420352148
745,918.99 SF / 17.12
ACRES
811 21ST STREET SE
PUYALLUP, WA

EXISTING
SCHOOL BUILDING
56,952 SF PAD
FF=66.00

HIGH SCHOOL BUILDING
(56,952 SQ. FT.)
FF=66.00

EXISTING BLEACHERS

EX. JR. HIGH SCHOOL BUILDING
(33,062 SQ. FT.)
FF=67.75

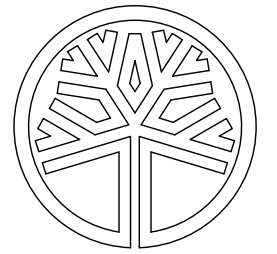
EX. JR. HIGH SCHOOL GYM

RELOCATED
ECOLOGY BLOCK
WALL

SEE SHEET L2.0 FOR PLANT LEGEND AND DETAILS

PARTIAL SITE PLAN

SCALE: 1" = 30'



STATE OF
WASHINGTON
REGISTERED
LANDSCAPE ARCHITECT
Craig D. Klein
CERTIFICATE NO. 442

DATE: 10-23-2024

LAST UPDATE:

CAD FILE:

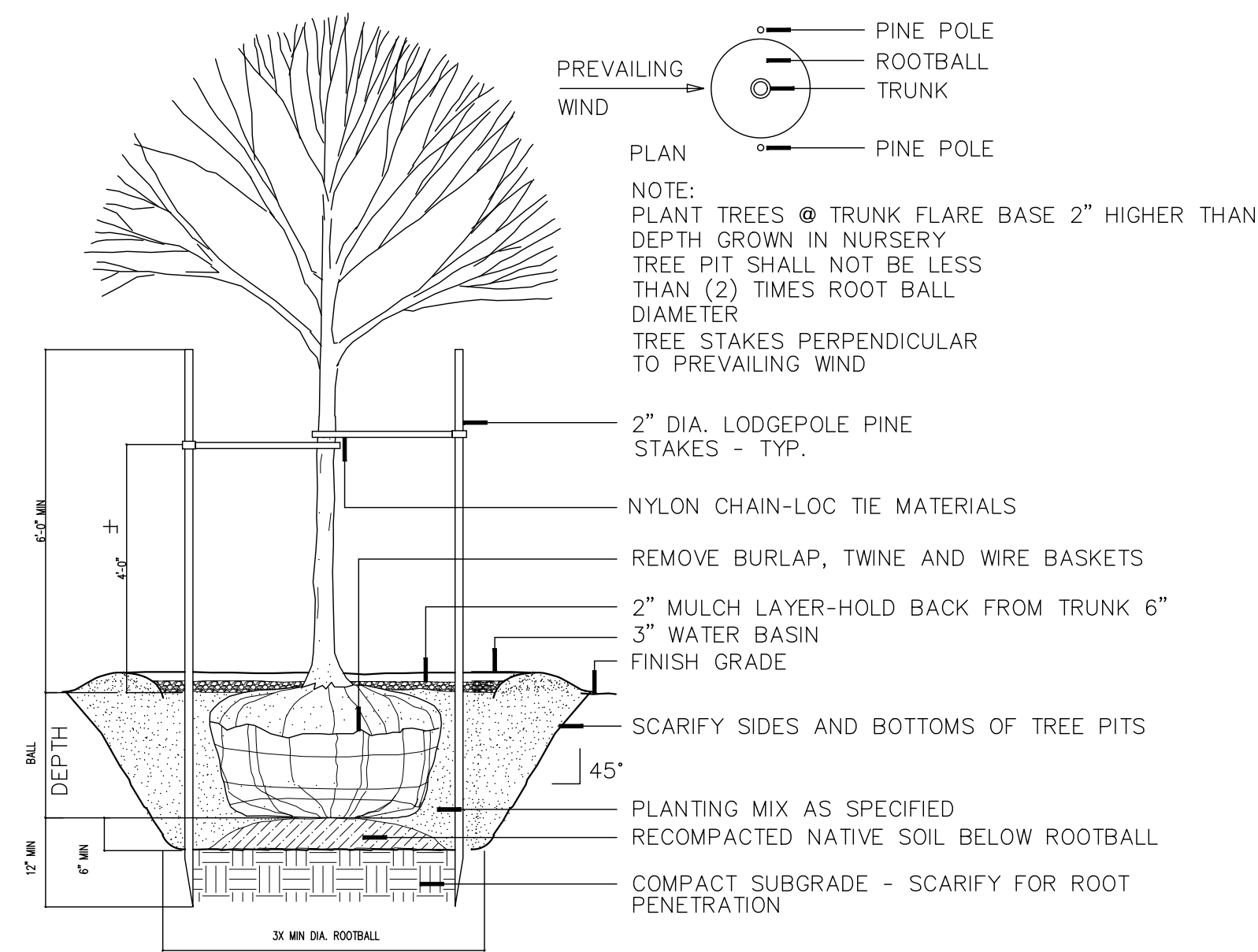
DRAWING TITLE

PLANTING PLAN

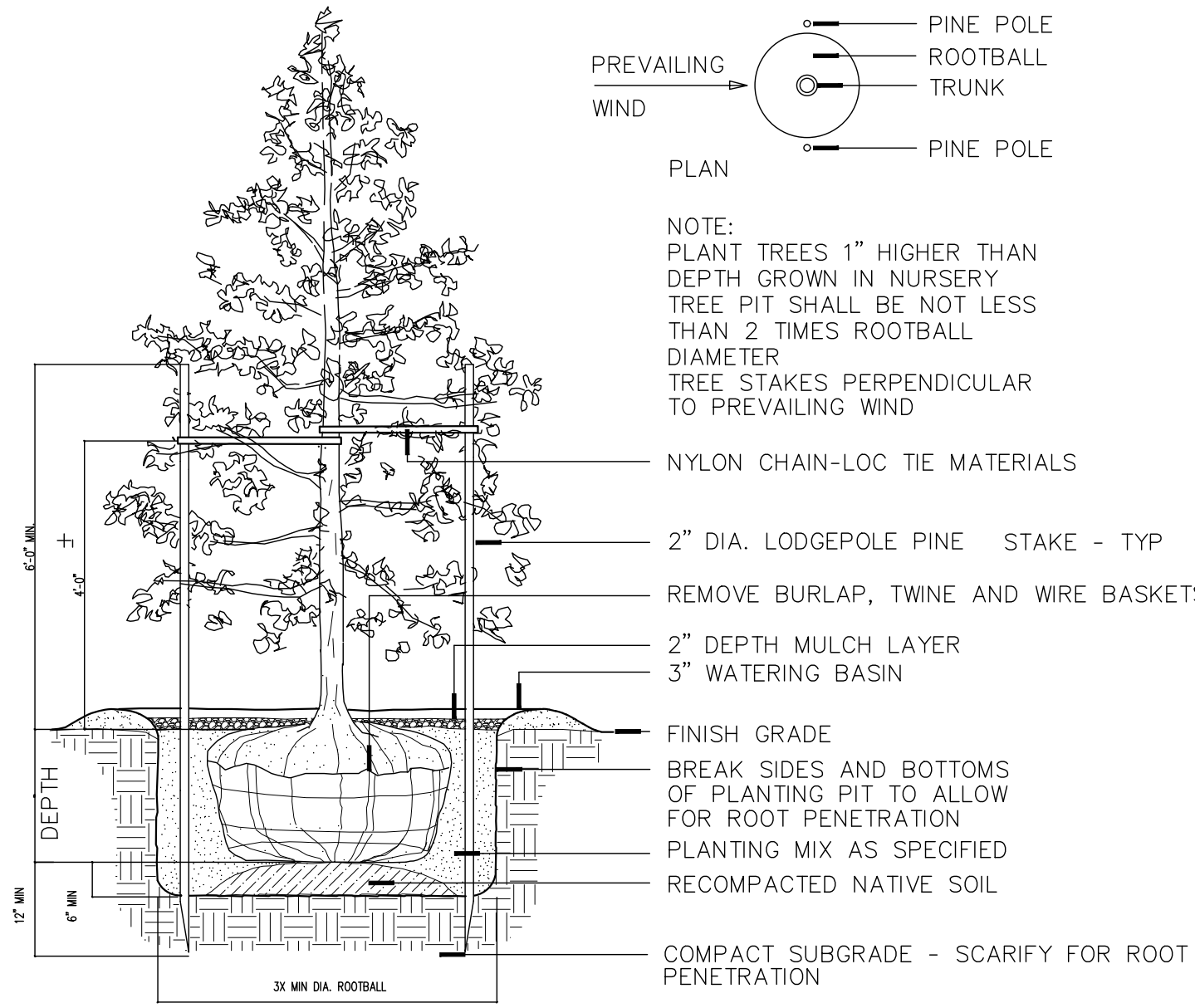
CUP-SEPA DOCUMENT

SHEET NUMBER

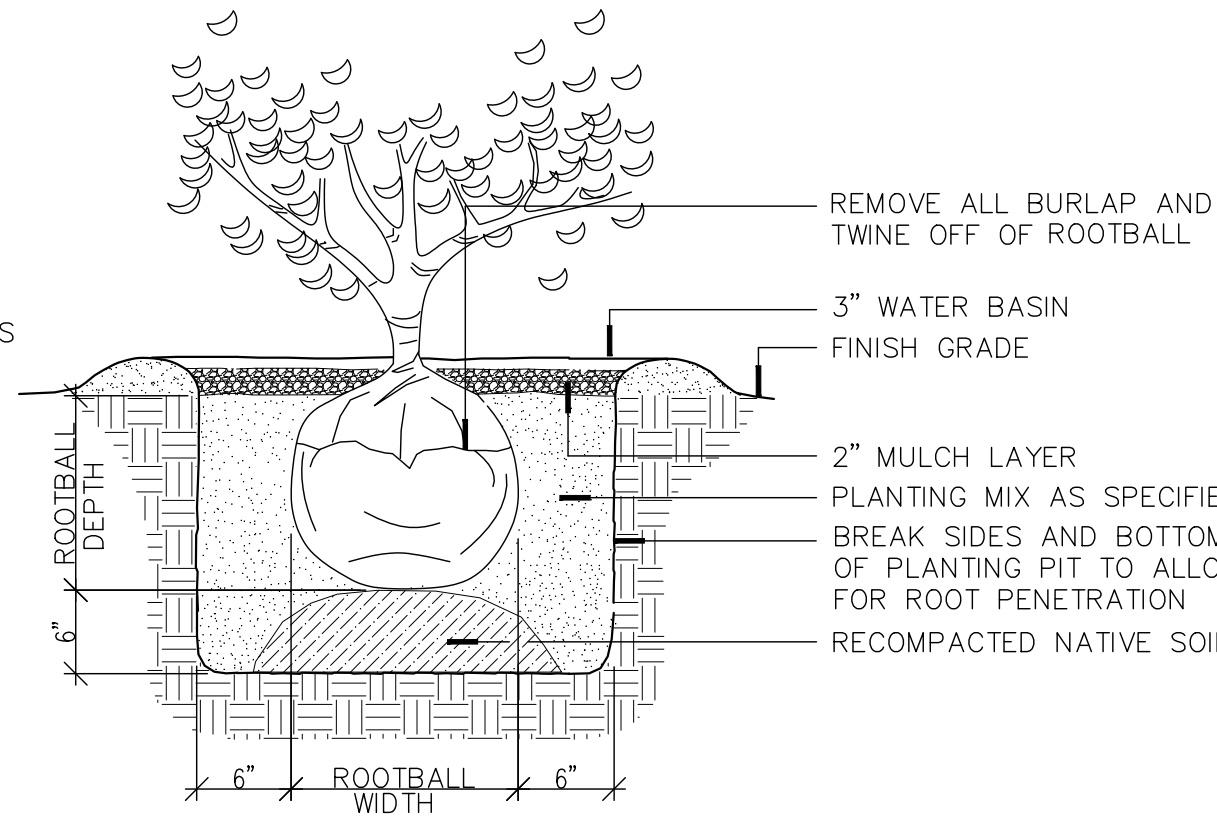
L1.0



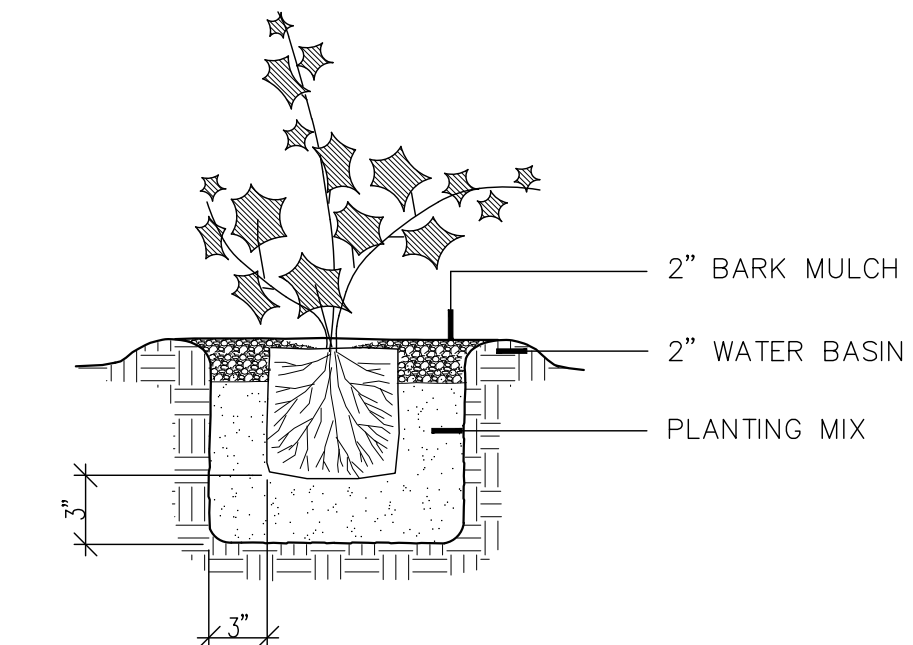
A TYPICAL DECIDUOUS TREE PLANTING
 NOT TO SCALE TREE-DECID1



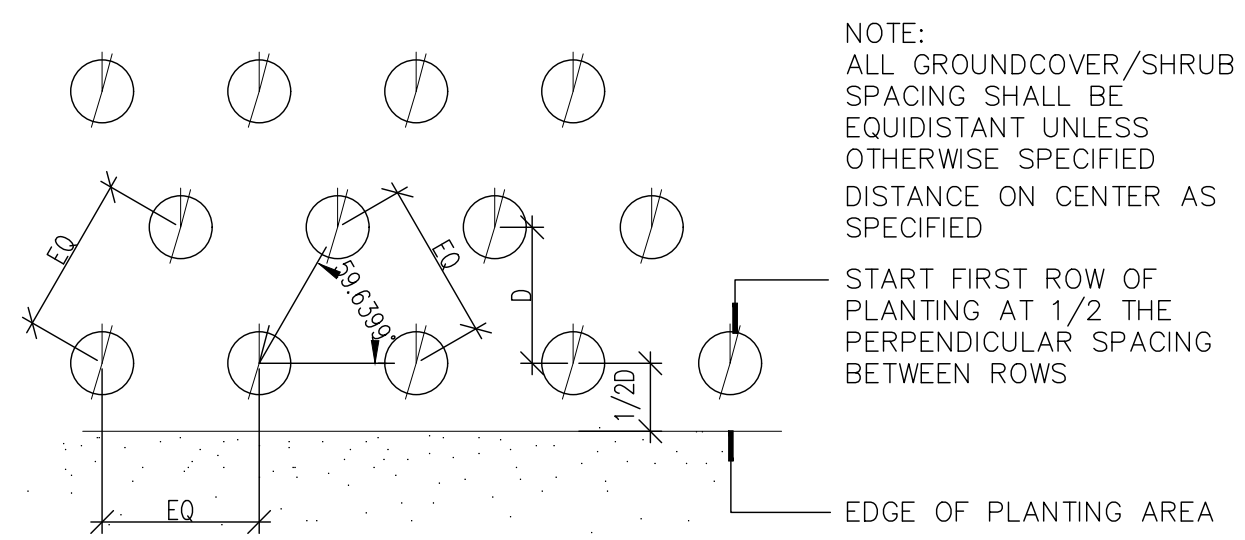
B TYPICAL CONIFEROUS TREE PLANTING
 NOT TO SCALE TREE-CON1



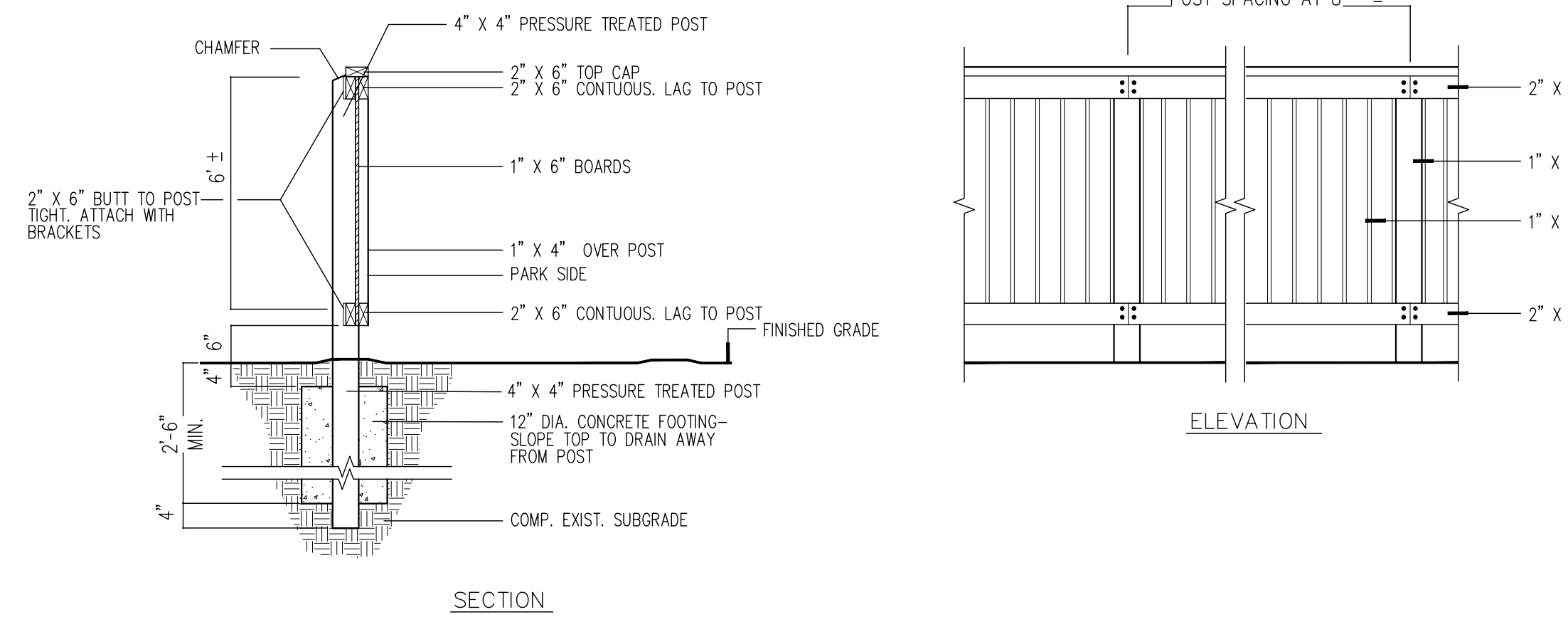
C TYPICAL SHRUB PLANTING DETAIL
 NOT TO SCALE SHRUB-1



D GROUNDCOVER PLANTING
 NOT TO SCALE GRNDCLR1



E TRIANGULAR PLANT SPACING
 NOT TO SCALE TRI-SPACE



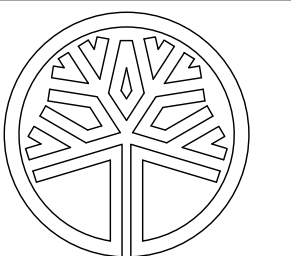
F WOOD FENCE
 NOT TO SCALE

PLANTING LEGEND

SYMBOL	PLANT TYPE	SIZE AT PLANTING	SPACING	NATIVE / ADAPT.	DROUGHT TOLERANT	QUANTITY
TREES						
	CELTIS OCCIDENTALIS / HACKBERRY	2" CALIPER, 8' HT.	AS INDICATED	NO	NO	3
	STEWARTIA PSEUDOCAMILLIA / JAPANESE STEWARTIA	2" CALIPER, 8' HT.	AS INDICATED	NO	NO	4
	CORNUS 'EDDIE'S WHITE WONDER' / HYBRID WHITE DOGWOOD	1-1/2" CALIPER, 8' HT.	AS INDICATED	YES	YES	2
SHRUBS						
	HOLODISCUS DISCOLOR / OCEAN SPRAY	18" HT., 3-GAL POT	3'-0" O.C.	YES	YES	4
	RIBES SANGUINEUM / WINTER CURRANT	18" HT., 3-GAL POT	3'-0" O.C.	YES	YES	40
	VIBURNUM TINUS 'SPRING BOUQUET' / VIBURNUM	24" HT., 5-GAL POT	4'-0" O.C.	NO	YES	10
	ILEX CRENATA CONVEXA / JAPANESE HOLLY	18" HT., 3-GAL POT	3'-0" O.C.	NO	YES	83
GROUNDCOVERS & PERENNIALS						
	FRAGARIA CHILOENSIS / SAND STRAWBERRY	4" CONTAINER	1'-6" O.C.	YES	YES	
	MAHONIA REPANS / CREEPING MAHONIA	4" CONTAINER	1'-6" O.C.	YES	YES	
	RUBUS CALYCINOIDES / CREEPING BRAMBLE	4" CONTAINER	1'-6" O.C.	NO	YES	
	SODDED LAWN - DROUGHT-TOLERANT MIX					
	INDICATES 3" DEPTH MEDIUM FINE BARK MULCH COVER ONLY					
	INDICATES 6' HT. WOOD FENCE					

NOTES

1. ALL NEW PLANTING SHALL BE IRRIGATED FOR THE ESTABLISHMENT PERIOD WITH AUTOMATIC POP-UP SPRAY IRRIGATION EQUIPMENT.
2. ALL NEW PLANTING AREAS SHALL RECEIVE MINIMUM 2" OF COMPOST SOIL AMENDMENT TILLED INTO THE TOP 6" OF SOIL AND MIN. 2" OF ORGANIC MULCH.
3. NEW SWALE AREA SHALL RECEIVE MINIMUM 4" OF COMPOST SOIL AMENDMENT TILLED INTO THE TOP 12" OF SOIL.



STATE OF WASHINGTON
 REGISTERED
 LANDSCAPE ARCHITECT
 LAIN D. DEW
 CERTIFICATE NO. 442

DATE: 10-23-2024

LAST UPDATE:
 CAD FILE:

DRAWING TITLE

**PLANT SCHEDULE
 AND DETAILS**

CUP-SEPA DOCUMENT

SHEET NUMBER

L2.0