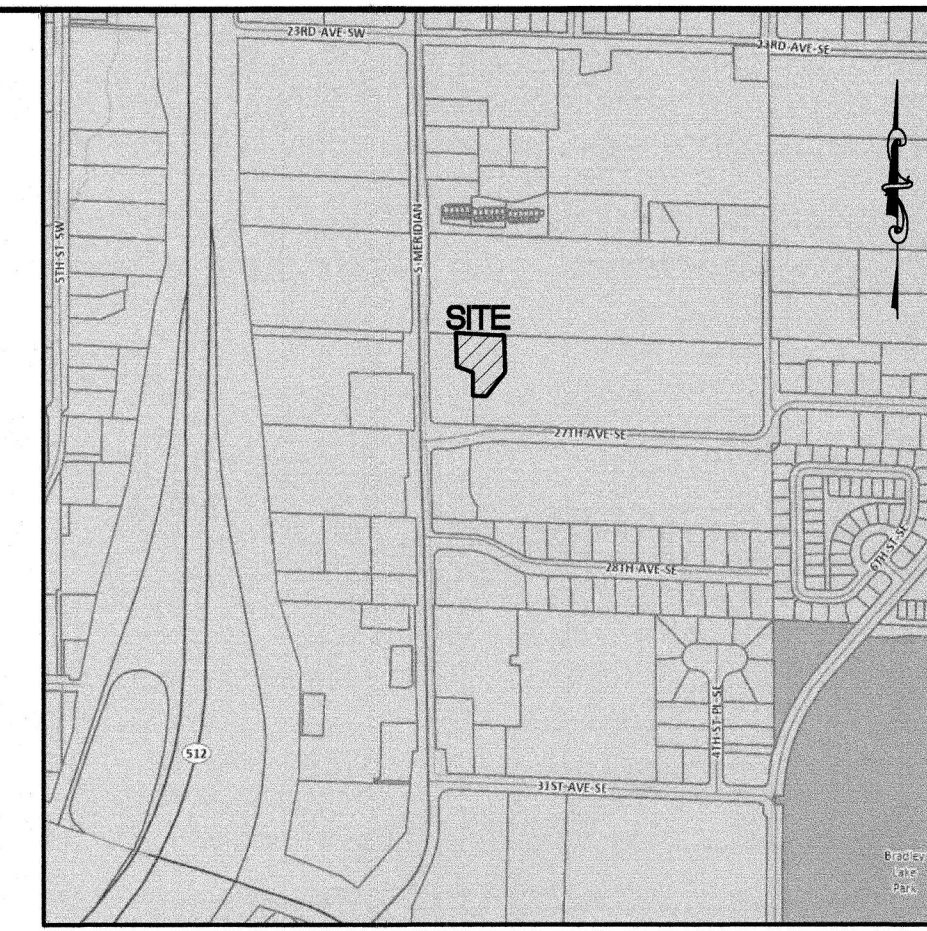
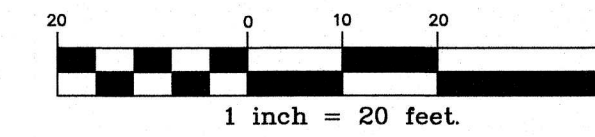


# 27TH AVE SE TOWNHOMES

A PORTION OF NE 1/4 SEC. 3, T19N, R4E  
WILLAMETTE MERIDIAN, PIERCE COUNTY, WASHINGTON



**VICINITY MAP**  
NTS

No.	Revision:	Date:

TREE ASSESSMENT  
PREPARE BY:  
*Donald Babineau*  
6/9/25  
DONALD BABINEAU  
PROFESSIONAL  
FORESTER

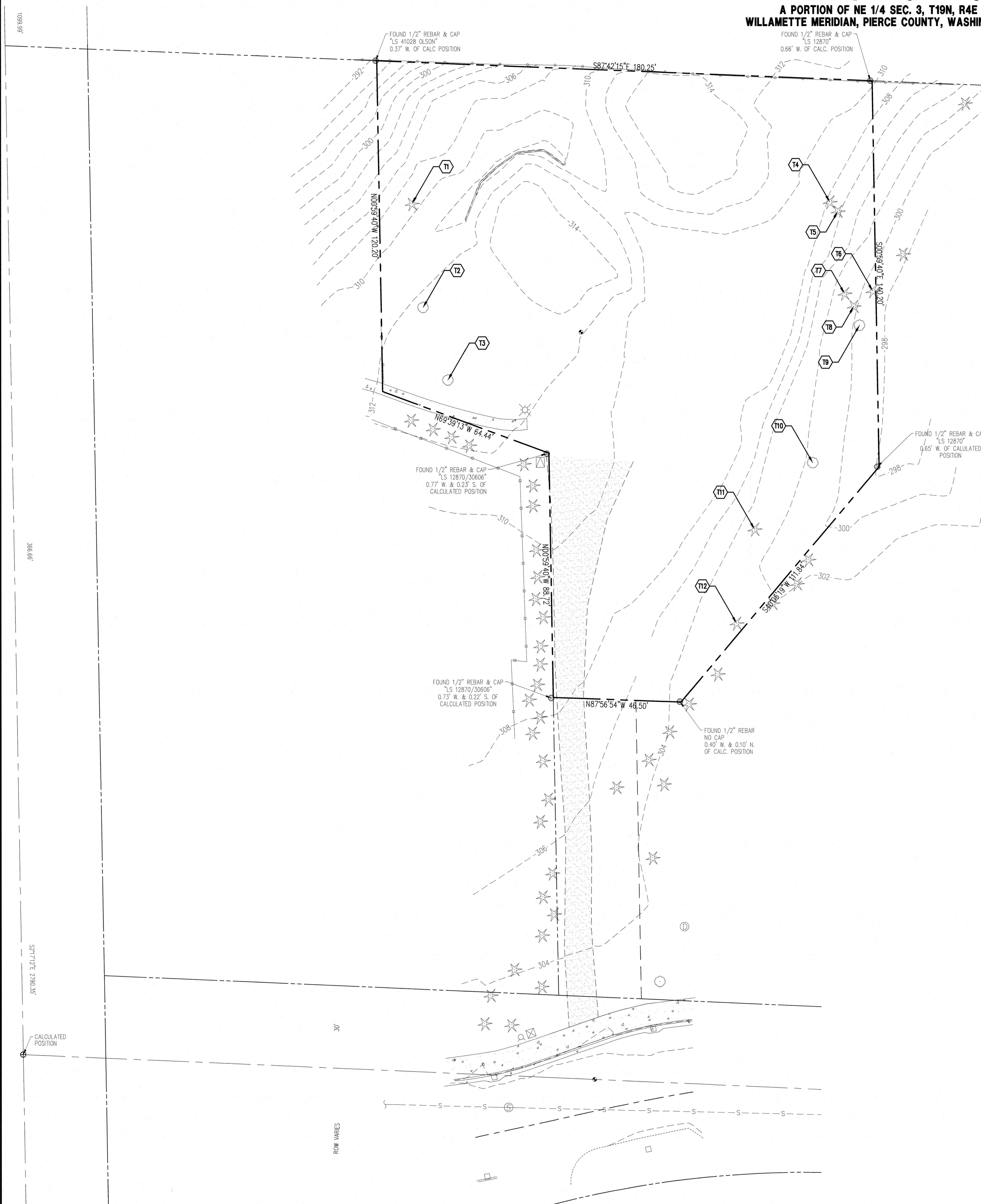
### EXISTING TREES

TREE #	DBH	SPECIES	REMOVE/RETAIN
T1	32"	PINE	REMOVE
T2	42"	MAPLE	REMOVE
T3	8",8"	2-TRUNK LINDEN	REMOVE
T4	34"	FIR	REMOVE
T5	26"	FIR	REMOVE
T6	30"	FIR	REMOVE
T7	38"	FIR	REMOVE
T8	28"	FIR	REMOVE
T9	38"	MAPLE	REMOVE
T10	36",24"	2-TRUNK MAPLE	REMOVE
T11	10",10"	2-TRUNK CEDAR	REMOVE
T12	14"	FIR	REMOVE

NOTE: ALL TREES ONSITE TO BE REMOVED TO PREPARE THE SITE FOR CONSTRUCTION.

### LEGEND

- FOUND MON AS NOTED
- FOUND REBAR/CAP AS NOTED
- SITE BENCHMARK
- DECIDUOUS TREE
- EVERGREEN TREE
- TELEPHONE JUNCTION BOX
- STORM CATCH BASIN
- LIGHT POLE
- TRANSFORMER
- WATER VALVE
- SANITARY SEWER MANHOLE
- FIRE HYDRANT
- STORM DRAIN MANHOLE
- CHAINLINK FENCE AS NOTED
- WOOD FENCE AS NOTED
- CONCRETE
- DIRT



**C.E.S. NW INC.**  
CIVIL ENGINEERING & SURVEYING  
429 - 29TH ST. NE, SUITE D  
FOULDAIR, WA 98572  
PH: (253) 848-4282  
ceservices@cesnwinc.com

**27TH AVE SE TOWNHOMES**  
TREE RISK ASSESSMENT

Client: LLOYD ENTERPRISES  
Project: 27TH AVE SE TOWNHOMES TREE RISK ASSESSMENT  
Designed: DPS  
Drawn: LDU  
Checked: DAB  
Scale: 1"=20'  
Date: 06/08/25  
Job No.: 24208  
Sheet No.: TR1  
3 of 4 Sheets

**CALL 48 HOURS  
BEFORE YOU DIG  
DIAL 811**