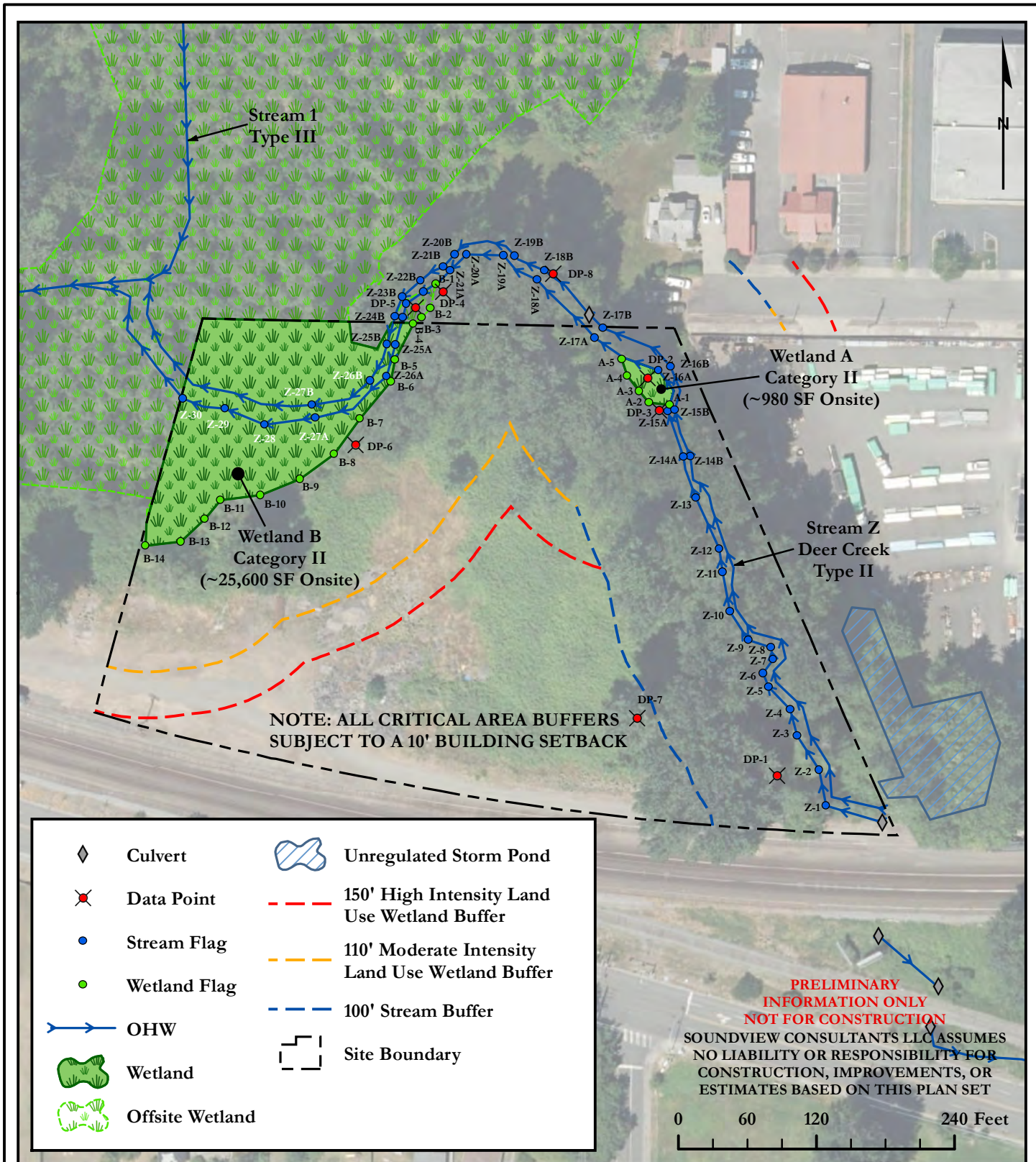


EXISTING CONDITIONS



Soundview Consultants LLC
 Environmental Assessment • Planning • Land Use Solutions

2907 Harborview Dr., Suite D, Gig Harbor, WA 98335
 Phone: (253) 514-8952 Fax: (253) 514-8954
www.soundviewconsultants.com

INTER AVE
 ADJACENT EAST OF 1919 E PIONEER
 PUYALLUP, WA 98372

PIERCE COUNTY PARCEL NUMBER:
 2105200221

| |
|------------------|
| DATE: 5/22/2024 |
| JOB: 2754.0001 |
| BY: DDS |
| SCALE: 1" = 120' |
| FIGURE NO. 1 |