

*Critical Area Report*

*of the*

*202 15<sup>th</sup> Ave. S.W.  
Puyallup, Washington 98531*

*Tax Parcel No.: 6026420010  
Section 33, Township 20 N, Range 4 E,  
Of the Willamette Meridian*

*Prepared for:  
Puyallup 15<sup>th</sup> Ave. LLC  
119 N. Commercial St., Ste. 165  
Bellingham, Washington 98225-4452*

*Dated:  
September 24, 2025*

*Prepared by:  
Jeffery S. Jones, Wetland Scientist & Wildlife Biologist*

---

P. O. BOX 1908  
ISSAQUAH, WASHINGTON 98027

253-905-5736 jeff.jsjones@comcast.net

## Table of Contents

Project Description & Purpose.....	1
Site Address & Identification.....	1
Methodology.....	1
General Site Description.....	1
Wetland Determination.....	2
Wetland Classification.....	2
Wetland Buffer Width.....	2
Streams.....	5
Impacts to Critical Areas.....	6
Authority.....	6
Limitations.....	6
References.....	6

## Attachments

Vicinity Map  
Critical Area Sketch  
Pierce County PublicGIS  
USDA NRCS Soils Map  
DNR FPARS Water Typing Map  
National Wetland Inventory Map  
Priority Habitats and Species (PHS) Online Report  
Routine Wetland Determination Form  
Photo Pages  
WATOR Off-site Wetland Rating Summary  
WATOR Wetland Rating Figures 1-10  
Wetlands NW Wetland Rating Form  
Wetlands NW Wetland Rating Figures

### *Project Description & Purpose*

The applicant proposes expanding the Fairfield Inn building.

### *Site Address & Identification*

The property is located at 202 15<sup>th</sup> Ave. S.W., Puyallup, WA 98531, see attached Vicinity Map. The Pierce County tax parcel number (TPN) is 6026420010.

### *Methodology*

The wetland assessment and delineation were performed using the U.S. Army Corps of Engineers “*Regional Supplement to the Corps of Engineers Wetland Delineation Manual: Western Mountains, Valleys, and Coast Region (Version 2.0)*” (COE. 2010). Wetlands are rated using the “*Washington State Wetland Rating System for Western Washington, Washington State Department of Ecology Publication Number 04-06-025, published August, 2004*” (Hruby, T. & Yahnke, A. 2023).

The wetland field work was performed on September 22, 2025 by Jeffery Jones, Wetland Scientist. Jeffery Jones has a B.S. in biology with 38 years of experience as a wetland scientist and wildlife biologist in Western Washington; eight years with the National Resource Conservation Service (NRCS), formerly the Soil Conservation Service; and, one year as an avian biologist for Wildlife International. There is one sample location, SL-1.

Data sources included:

- Pierce County PALS GIS
- National Wetland Inventory (USFWS)
- USDA NRCS Web Soils Survey
- WDFW Priority Habitats & Species Online Report
- DNR FPARS Water Typing Map

### *General Site Description*

The tax parcel is 1.475 acres. The parcel has an existing hotel and parking lots. The parcel slopes down to the north 15-30%, with retaining walls to maximize parking. The perimeter is bordered by forest, and Highway 512 lies directly west.

### *Wetland Determination*

There are no wetlands on-site. However, to the north, south and east of the parcel, there is a drainage pattern with a stream and wetland. There is no data sheet for this wetland because it is off-site, with no legal right to access. The wetland soils are Shalcar muck. Shalcar muck has a black (10YR 2/1) "A" horizon. Hydrology is seasonally saturated, with areas of shallow surface inundation and a water table at or near the soil surface. The plant community is forested. Dominant plants include Pacific willow (*Salix lucida*), red alder (*Alnus rubra*), Western lady fern (*Athyrium filix-femina*), salmonberry (*Rubus spectabilis*), and skunk cabbage (*Lysichiton americanus*). The plant community is more than 50% FAC or wetter species and hydrophytic.

### *Wetland Classification*

The off-site wetland is rated as a Category III wetland with a total score of 17 points and a habitat score of 5 points, see the attached Offsite Wetland WATOR rating summary and figures. The wetland HGM classification for rating is "depressional." This rating agrees with the Wetlands NW rating prepared in January 2025 and approved by the city, see the attached rating form and figures.

### *Wetland Buffer Width*

According to the City of Puyallup Municipal Code, PMC 21.06.930, the wetland buffer requirement for a Category III wetland with a habitat score of 5 points and commercial use, is 80 feet.

The applicant may propose minimization measures and buffer reductions where the wetland extends north of the existing berm. The buffer enhancement consists of planting native vegetation to improve habitat and provide additional protection for the wetland. Buffer enhancement plan also includes maintenance, monitoring, contingency plans, and a financial guarantee.

PMC 21.06.930 Performance standards – Wetland buffer widths.

(d) Width of buffers needed to protect Category III wetlands (for wetlands scoring 16 to 19 points for all functions):

Wetland Characteristics	Buffer Widths by Impact of Proposed Land Use
Moderate level of function for habitat (score for habitat 6 – 7 points)* *If wetland scores 8 – 9 habitat points, use buffers for Category II.	Low – 75 ft Moderate – 110 ft High – 150 ft
Not meeting above characteristic	Low – 40 ft Moderate – 60 ft High – 80 ft

(3) The standard buffer widths of subsection (2) of this section may be decreased through the reduction measures of this section.

(a) The buffer widths recommended for land uses with “high intensity” impacts to wetlands can be reduced to those recommended for “moderate intensity” impacts under the following conditions:

(i) A relatively undisturbed vegetated corridor at least 100 feet in width is established, enhanced and/or protected (if adequate vegetation exists) between the wetland and any other upland priority habitats adjacent to the wetland as defined by the Washington State Department of Fish and Wildlife. The corridor shall be protected by a native growth protection easement or some other legal mechanism providing permanent protection.

(ii) A buffer enhancement plan, consistent with applicable mitigation report and monitoring requirements of this chapter, is submitted and approved in order to improve the functions of the buffer area to the maximum extent possible.

(iii) All applicable measures to minimize the potential impacts of different land uses on wetland habitat functions, as summarized in the following table, are applied to the development:

<u>Wetland</u> Impact Minimizations	
Disturbance	Required Measures to Minimize Impacts
Lights	<ul style="list-style-type: none"> <li>• Direct lights away from <u>wetland</u></li> </ul>
Noise	<ul style="list-style-type: none"> <li>• Locate activity that generates noise away from <u>wetland</u></li> <li>• If warranted, <u>enhance</u> existing <u>buffer</u> with <u>native vegetation</u> plantings adjacent to noise source</li> <li>• For activities that generate relatively continuous, potentially disruptive noise, such as certain heavy industry or mining, establish an additional 10' heavily vegetated <u>buffer</u> strip immediately adjacent to the outer <u>wetland</u> buffer</li> </ul>
Toxic runoff	<ul style="list-style-type: none"> <li>• Route all new, untreated runoff away from <u>wetland</u> while ensuring <u>wetland</u> is not dewatered</li> <li>• Establish covenants limiting <u>use</u> of pesticides within 150 feet of <u>wetland</u></li> <li>• Apply integrated pest management</li> </ul>
Stormwater runoff	<ul style="list-style-type: none"> <li>• Retrofit stormwater detention and treatment for roads and existing adjacent development</li> <li>• Prevent channelized flow from lawns that directly enters the <u>buffer</u></li> <li>• <u>Use</u> Low Intensity Development techniques (per PSAT publication on LID techniques)</li> </ul>
Change in water regime	<ul style="list-style-type: none"> <li>• Infiltrate or treat, detain, and disperse into <u>buffer</u> new runoff from <u>impervious surfaces</u> and new lawns</li> </ul>
Pets and human disturbance	<ul style="list-style-type: none"> <li>• <u>Use</u> privacy <u>fencing</u> OR plant dense <u>vegetation</u> to delineate <u>buffer</u> edge and to discourage disturbance using <u>vegetation</u> appropriate for the <u>ecoregion</u></li> <li>• Place <u>wetland</u> and its <u>buffer</u> in a separate tract or protect with a conservation easement</li> </ul>
Dust	<ul style="list-style-type: none"> <li>• <u>Use</u> best management practices to control dust</li> </ul>
Disruption of corridors or connections	<ul style="list-style-type: none"> <li>• Maintain connections to offsite areas that are undisturbed</li> <li>• <u>Restore</u> corridors or connections to offsite habitats by replanting</li> </ul>

## *Streams*

An unnamed stream is located within the off-site wetland. According to the DNR FPARS water typing map, the stream is a Type N. Flow is seasonal. Converting the state stream typing system to the cities, the stream is Type III. A Type III stream buffer is 50 feet.

PMC 21.06.1010 Designation, mapping, and rating.

(3) For purposes of this chapter, fish and wildlife habitat conservation areas shall include the following:

(a) Streams and their associated riparian habitat areas. Streams shall be designated Type I, Type II, Type III, and Type IV according to the following criteria:

(i) Type I streams are those streams identified and regulated as “Shorelines of the State” pursuant to WAC [173-18-310](#) and the City of Puyallup Shoreline Master Program. Within the city’s corporate limits and the urban growth area, Type I streams are the Puyallup River and Clarks Creek, below Maplewood Springs;

(ii) Type II streams are those natural streams that are not Type I streams and are either perennial or intermittent, and have known or potential use by anadromous or resident fish species, significant recreational value, or significant wildlife habitat functions. Potential use shall be determined based upon species life cycle requirements, habitat suitability, presence or lack of natural barriers, and a reasoned evaluation of current, historic, and future fish use by a qualified professional. Within the city’s corporate limits and the urban growth area, known Type II streams including but not limited to Deer Creek, Diru Creek, Meeker Ditch, Rody Creek, Silver Creek, Wildwood Creek, Woodland Creek, and Wapato Creek;

(iii) Type III streams are those streams with perennial or intermittent flow and are not used by anadromous fish; and

(iv) Type IV streams are those intermittent or ephemeral streams with channel width less than two feet taken at the ordinary high water mark, that are not used by anadromous fish or resident fish.

PMC 21.06.1050 Performance standards – Stream and riparian buffer widths.

(1) Stream buffers shall be established landward of the ordinary high water mark adjacent to streams to protect the integrity, functions and values of the resource. Buffers shall consist of an undisturbed area of native vegetation and shall reflect the sensitivity of the stream and the type and intensity of the adjacent human use or activity.

(2) The standard buffer widths required by this chapter are considered to be the minimum required and presume the existence of a relatively intact native vegetation community in the buffer zone adequate to protect the stream functions and values at the time of the proposed activity. If the vegetation is inadequate, then the buffer width shall be increased or the buffer planted to maintain and improve the buffer functions. The following standard buffer width requirements are established:

(a) Type I: 150 feet;

(b) Type II: 100 feet;

(c) Type III: 50 feet; and

(d) Type IV: 35 feet.

### *Impacts to Critical Areas*

The proposal is to enlarge the hotel into a portion of the existing parking lot, on the south side of the hotel. The critical area boundary is more than 60 feet east of the parking lot, 50-foot buffer plus 10-foot structure setback. Both surfaces are impervious. The parking lot may have more pollutants in runoff. However, the effect on the critical area is insignificant. The wetland will not be impacted. The proposed project will not pose a risk to the off-site wetland or to the surrounding properties.

### *Authority*

This wetland determination is in accordance with Section 404 of the Clean Water Act. Wetlands are “areas that are inundated or saturated by surface or ground water at a frequency and duration sufficient to support, and that under normal circumstances do support, a prevalence of vegetation typically adapted for life in saturated soil conditions. Wetlands generally include swamps, marshes, bogs, and similar areas” (EPA, 1980) (EPA, 1982).

### *Limitations*

No assumptions were used for this critical area study. Wetland studies are done using the required methodologies and professional judgement. Wetland determinations and delineations are not final until approved by regulatory agencies and/or local jurisdictions. *J. S. Jones and Associates, Inc.* does not guarantee acceptance or approval by regulatory agencies, or that any intended use will be achieved.

### *References*

COE. 2010. Regional Supplement to the Corps of Engineers Wetland Delineation Manual: Western Mountains, Valleys, and Coast Region (Version 2.0), ed. J. S.

Wakeley, R. W. Lichvar, and C. V. Noble. ERDC/EL TR-10-3. Vicksburg, MS: U.S. Army Engineer Research and Development Center.

Hruby, T. & Yahnke, A. (2023). *Washington State Wetland Rating System for Western Washington: 2014 Update (Version 2)*. Publication #23-06-009. Washington Department of Ecology.

COE. 2020 National Wetland Plant List, v. 3.3.

[http://wetland-plants.usace.army.mil/nwpl\\_static/index.html](http://wetland-plants.usace.army.mil/nwpl_static/index.html)

DNR. FPARS Water Typing Map. <https://fpamt.dnr.wa.gov/default.aspx>

NRCS. Web Soil Survey

<https://websoilsurvey.sc.egov.usda.gov/App/WebSoilSurvey.aspx>

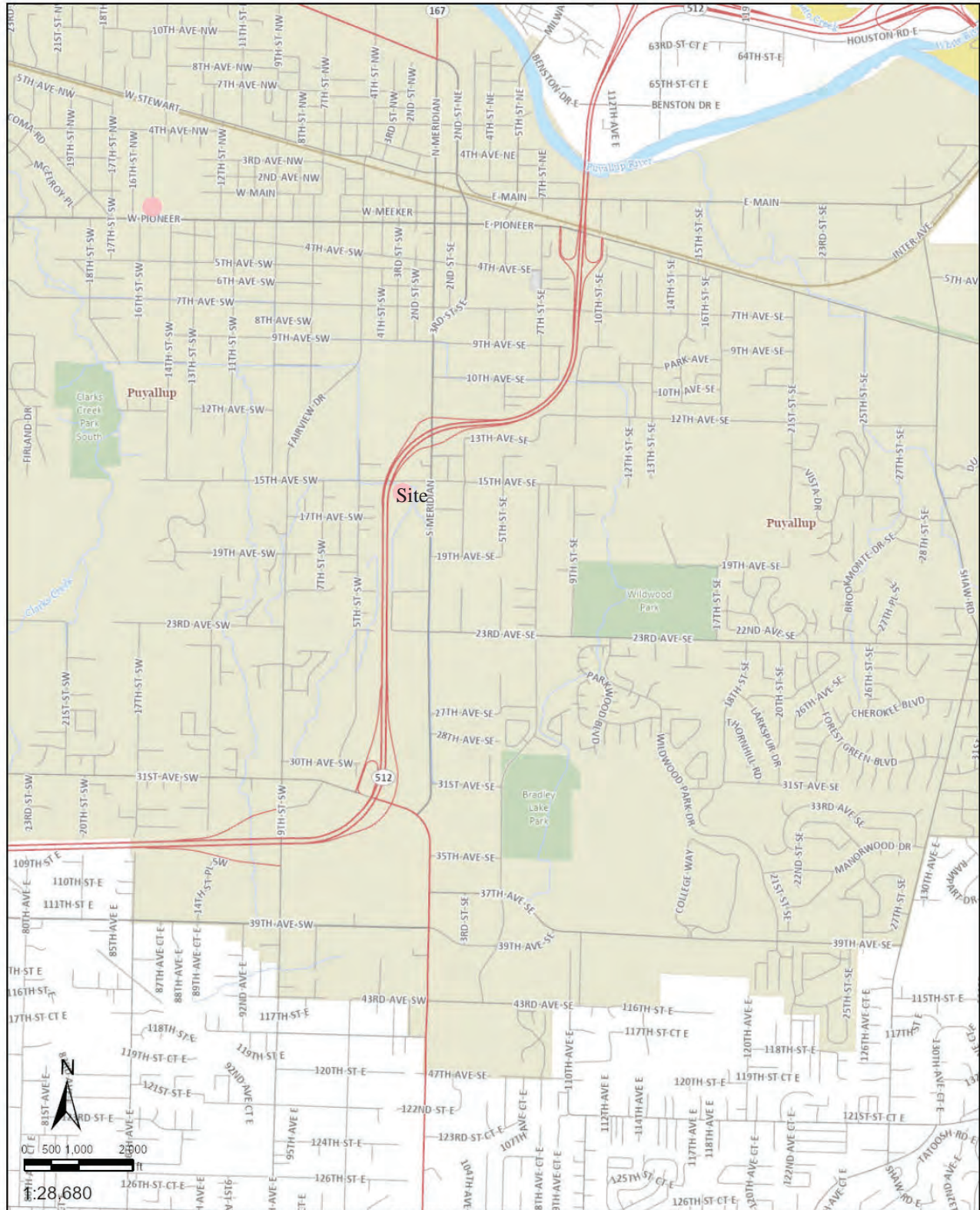
USFWS. National Wetland Inventory. <https://www.fws.gov/wetlands/>

WDFW. PHS on the Web. <https://geodataservices.wdfw.wa.gov/hp/phs/>

## **Attachments**

# PublicGIS

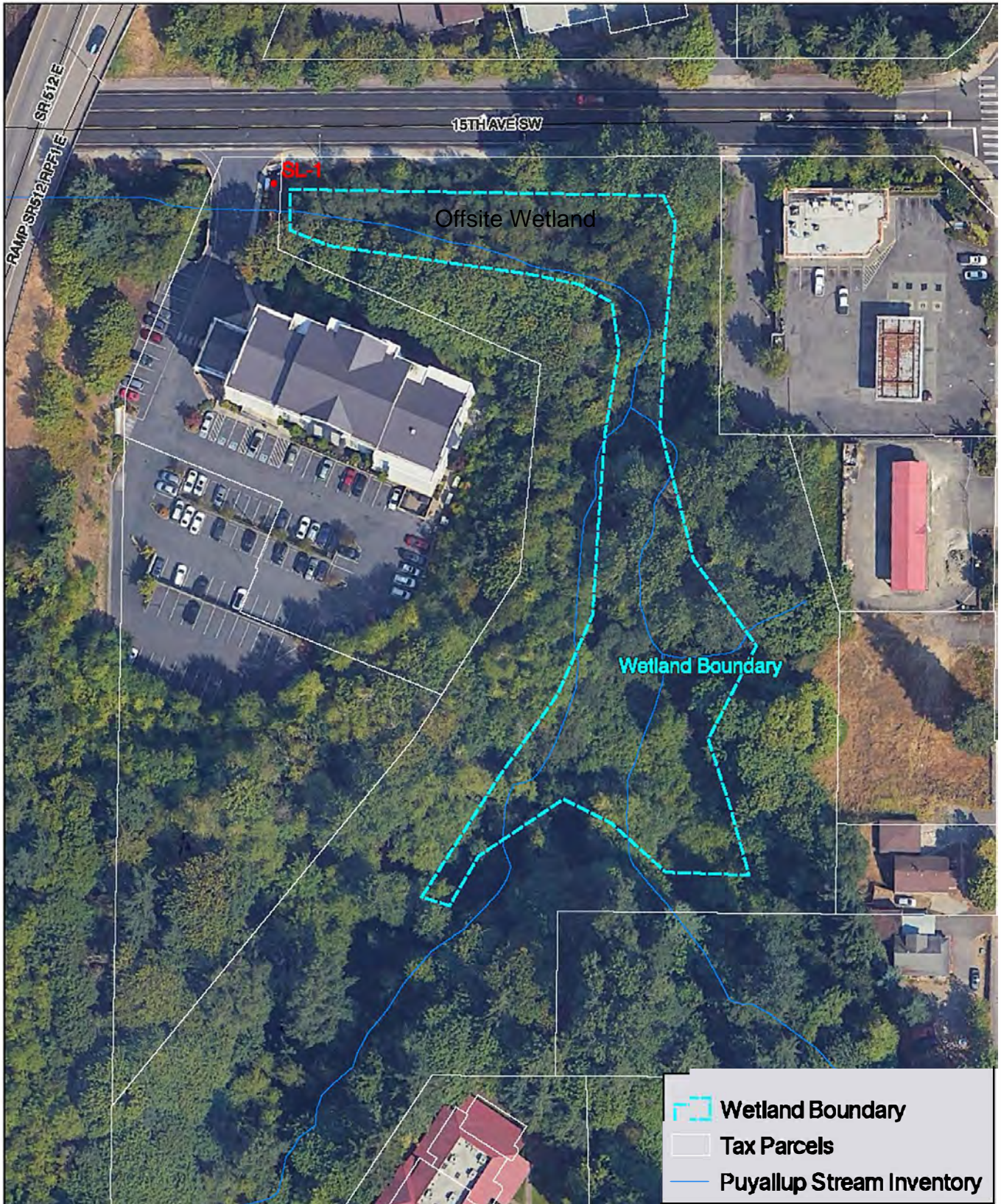
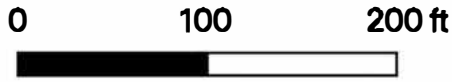
# Vicinity Map

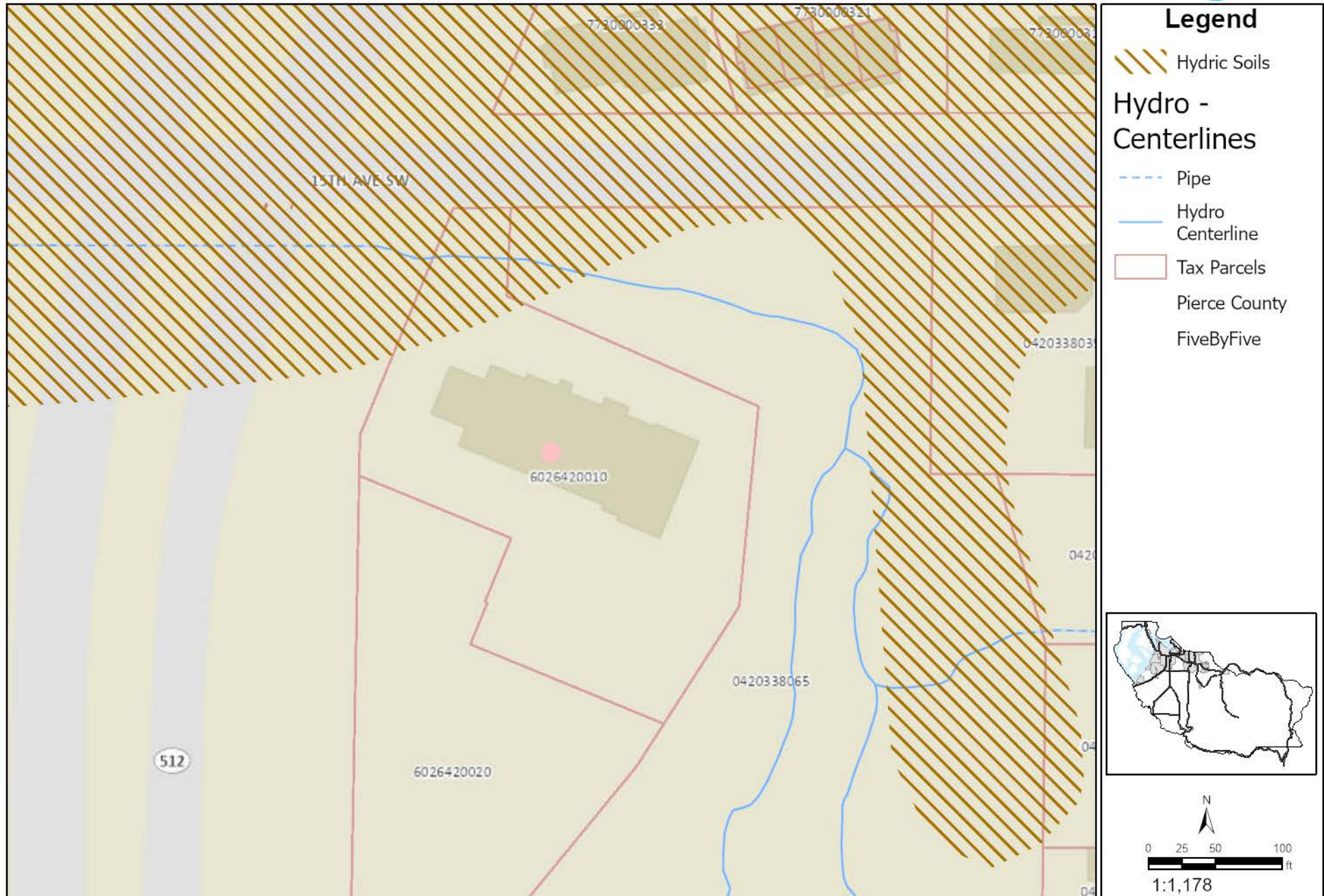


Disclaimer: The map features are approximate and have not been surveyed. Additional features not yet mapped may be present. Pierce County assumes no liability for variations ascertained by formal survey.

Date: 9/21/2025 06:37 PM

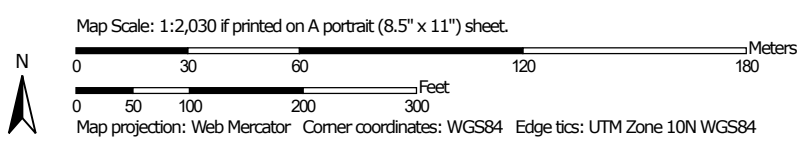
# Critical Area Sketch Google Earth Aerial





*Disclaimer: The map features are approximate and have not been surveyed. Additional features not yet mapped may be present. Pierce County assumes no liability for variations ascertained by formal survey.*

Soil Map—Pierce County Area, Washington



## MAP LEGEND

- Area of Interest (AOI)
- Area of Interest (AOI)
- Soils**
- Soil Map Unit Polygons
- Soil Map Unit Lines
- Soil Map Unit Points
- Special Point Features**
- Blowout
- Borrow Pit
- Clay Spot
- Closed Depression
- Gravel Pit
- Gravelly Spot
- Landfill
- Lava Flow
- Marsh or swamp
- Mine or Quarry
- Miscellaneous Water
- Perennial Water
- Rock Outcrop
- Saline Spot
- Sandy Spot
- Severely Eroded Spot
- Sinkhole
- Slide or Slip
- Sodic Spot
- Spoil Area
- Stony Spot
- Very Stony Spot
- Wet Spot
- Other
- Special Line Features
- Water Features**
- Streams and Canals
- Transportation**
- Rails
- Interstate Highways
- US Routes
- Major Roads
- Local Roads
- Background**
- Aerial Photography

## MAP INFORMATION

The soil surveys that comprise your AOI were mapped at 1:24,000.

Warning: Soil Map may not be valid at this scale.

Enlargement of maps beyond the scale of mapping can cause misunderstanding of the detail of mapping and accuracy of soil line placement. The maps do not show the small areas of contrasting soils that could have been shown at a more detailed scale.

Please rely on the bar scale on each map sheet for map measurements.

Source of Map: Natural Resources Conservation Service  
 Web Soil Survey URL:  
 Coordinate System: Web Mercator (EPSG:3857)

Maps from the Web Soil Survey are based on the Web Mercator projection, which preserves direction and shape but distorts distance and area. A projection that preserves area, such as the Albers equal-area conic projection, should be used if more accurate calculations of distance or area are required.

This product is generated from the USDA-NRCS certified data as of the version date(s) listed below.

Soil Survey Area: Pierce County Area, Washington  
 Survey Area Data: Version 20, Aug 27, 2024

Soil map units are labeled (as space allows) for map scales 1:50,000 or larger.

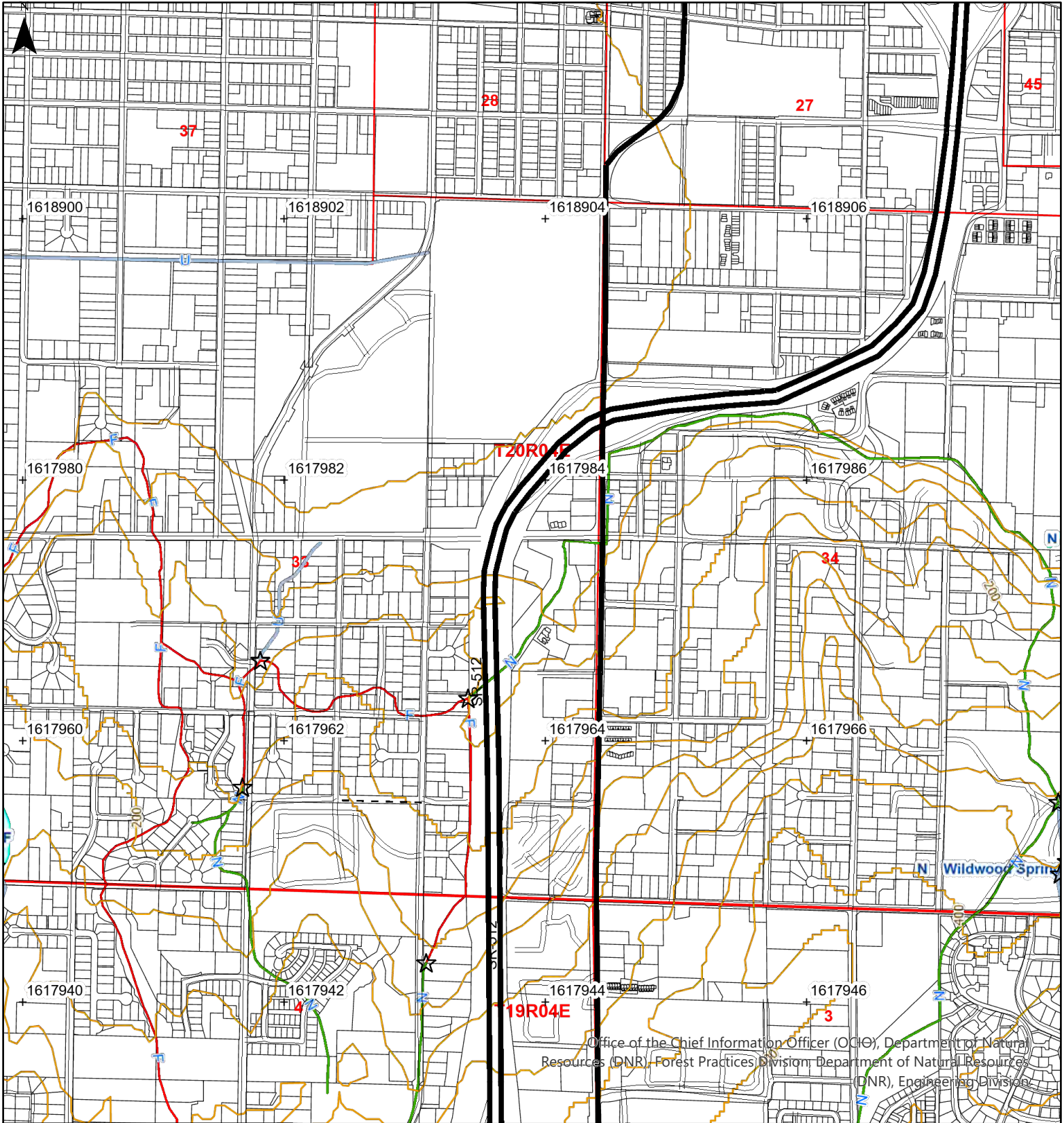
Date(s) aerial images were photographed: Jul 31, 2022—Aug 8, 2022

The orthophoto or other base map on which the soil lines were compiled and digitized probably differs from the background imagery displayed on these maps. As a result, some minor shifting of map unit boundaries may be evident.

## Map Unit Legend

Map Unit Symbol	Map Unit Name	Acres in AOI	Percent of AOI
19D	Kapowsin gravelly ashy loam, 15 to 30 percent slopes	1.1	5.0%
20C	Kitsap silt loam, 8 to 15 percent slopes	1.5	6.6%
20D	Kitsap silt loam, 15 to 30 percent slopes	15.6	70.6%
38A	Shalcar muck	3.9	17.8%
<b>Totals for Area of Interest</b>		<b>22.0</b>	<b>100.0%</b>

# Forest Practices Activity Map - Application #



Office of the Chief Information Officer (OCIO), Department of Natural Resources (DNR), Forest Practices Division, Department of Natural Resources (DNR), Engineering Division

### Map Symbols

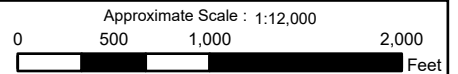
- ~~~~ Harvest Boundary
- Road Construction
- ~ Stream
- RMZ / WMZ Buffers
- Rock Pit
- Landing
- Waste Area
- Clumped WRTS/GRTS
- Existing Structure

### Additional Information

Extreme care was used during the compilation of this map to ensure its accuracy. However, due to changes in data and the need to rely on outside information, the Department of Natural Resources cannot accept responsibility for errors or omissions, and therefore, there are no warranties that accompany this material.

### Legal Description

S33 T20.0N R04.0E, S04 T19.0N R04.0E, S34 T20.0N R04.0E, S27 T20.0N R04.0E, S37 T20.0N R04.0E, S45 T20.0N R04.0E, S03 T19.0N R04.0E, S28 T20.0N R04.0E



Date: 9/21/2025 Time: 6:10 PM









# Legend

- ☆ Modeled
- ★ WTMF
- + Map Registration Tics
- ◆ Abandoned
- ◇ Orphaned
- - Trail
- + Railroad
- ≡ Railroad Grade
- ▬ Paved Road
- ▬ Unpaved Road/Surface
- Unknown
- 40 ft. Contours
- Type S
- Type F
- Type N, Np, Ns
- U, unknown
- ... X, non-typed per WAC 222-16
- ▬ Other Impoundments
- Open Freshwater
- Subject to Inundation
- Glacier / Snowfield
- Wet Area
- Open Saltwater
- Artificial Feature
- Public Land Survey Townships
- Public Land Survey Sections
- County Tax Parcels
- County Boundaries
- Tribal Cultural Resource Contacts



September 21, 2025

### Wetlands

- |   |                                |   |                                   |   |          |
|---|--------------------------------|---|-----------------------------------|---|----------|
|  | Estuarine and Marine Deepwater |  | Freshwater Emergent Wetland       |  | Lake     |
|  | Estuarine and Marine Wetland   |  | Freshwater Forested/Shrub Wetland |  | Other    |
|   |                                |  | Freshwater Pond                   |  | Riverine |

This map is for general reference only. The US Fish and Wildlife Service is not responsible for the accuracy or currentness of the base data shown on this map. All wetlands related data should be used in accordance with the layer metadata found on the Wetlands Mapper web site.



## Priority Habitats and Species on the Web



Mapbox, Microsoft, Esri, HERE, Garmin, ICF, WDFW

**Buffer radius: 600 Feet**

**Report Date: 09/21/2025, Parcel ID: [6026420010](#)**

**The Priority Habitats and Species (PHS) datasets do not contain information for your project area. This does not mean that species and habitats do not occur in your project area. PHS data, points, lines and polygons are mapped only when occurrences of these species or habitats have been observed in the field. Unfortunately, we have not been able to comprehensively survey all sections in the state and therefore, it is important to note that priority species and habitats may occur in areas not currently known to the Department.**

DISCLAIMER. This report includes information that the Washington Department of Fish and Wildlife (WDFW) maintains in a central computer database. It is not an attempt to provide you with an official agency response as to the impacts of your project on fish and wildlife. This information only documents the location of fish and wildlife resources to the best of our knowledge. It is not a complete inventory and it is important to note that fish and wildlife resources may occur in areas not currently known to WDFW biologists, or in areas for which comprehensive

surveys have not been conducted. Site specific surveys are frequently necessary to rule out the presence of priority resources. Locations of fish and wildlife resources are subject to variation caused by disturbance, changes in season and weather, and other factors. WDFW does not recommend using reports more than six months old.

Project/Site: Hollander Hospitality City/County: Puyallup Sampling Date: 2025-09-24  
 Applicant/Owner: Puyallup 15th Ave LLC State: Washington Sampling Point: SL-1  
 Investigator(s): Jeffery Jones Section, Township, Range: Sec 33, Twn 20 N, Rge 4 E  
 Landform (hillside, terrace, etc.): Hillslope Local relief (concave, convex, none): None Slope (%): 30  
 Subregion (LRR/MLRA): A 1 Lat: 47.1771 Long: -122.2957 Datum: WGS 84  
 Soil Map Unit Name: Kitsap silt loam NWI classification: None

Are climatic / hydrologic conditions on the site typical for this time of year? Yes  No  (If no, explain in Remarks.)  
 Are Vegetation , Soil , or Hydrology  significantly disturbed? Are "Normal Circumstances" present? Yes  No   
 Are Vegetation , Soil , or Hydrology  naturally problematic? (If needed, explain any answers in Remarks.)

**SUMMARY OF FINDINGS – Attach site map showing sampling point locations, transects, important features, etc.**

Hydrophytic Vegetation Present? Yes <input checked="" type="checkbox"/> No <input type="checkbox"/> Hydric Soil Present? Yes <input type="checkbox"/> No <input checked="" type="checkbox"/> Wetland Hydrology Present? Yes <input type="checkbox"/> No <input checked="" type="checkbox"/>	<b>Is the Sampled Area within a Wetland?</b> Yes <input type="checkbox"/> No <input checked="" type="checkbox"/>
---	---

Remarks:  
**Moderate Drought Conditions**

**VEGETATION – Use scientific names of plants.**

Tree Stratum (Plot size: <u>30 ft r</u> )	Absolute % Cover	Dominant Species?	Indicator Status																	
1. <u>Acer macrophyllum</u>	40	<input checked="" type="checkbox"/>	FACU	<b>Dominance Test worksheet:</b> Number of Dominant Species That Are OBL, FACW, or FAC: <u>3</u> (A) Total Number of Dominant Species Across All Strata: <u>5</u> (B) Percent of Dominant Species That Are OBL, FACW, or FAC: <u>60.00</u> (A/B)																
2. <u>Alnus rubra</u>	10	<input checked="" type="checkbox"/>	FAC																	
3. _____																				
4. _____																				
50 = Total Cover																				
Sapling/Shrub Stratum (Plot size: <u>5 ft r</u> )																				
1. <u>Physocarpus capitatus</u>	25	<input checked="" type="checkbox"/>	FACW	<b>Prevalence Index worksheet:</b> <table style="width:100%; font-size: small;"> <tr> <td style="text-align: right;">Total % Cover of:</td> <td style="text-align: right;">Multiply by:</td> </tr> <tr> <td>OBL species <u>0</u></td> <td>x 1 = <u>0</u></td> </tr> <tr> <td>FACW species <u>25</u></td> <td>x 2 = <u>50</u></td> </tr> <tr> <td>FAC species <u>20</u></td> <td>x 3 = <u>60</u></td> </tr> <tr> <td>FACU species <u>60</u></td> <td>x 4 = <u>240</u></td> </tr> <tr> <td>UPL species <u>0</u></td> <td>x 5 = <u>0</u></td> </tr> <tr> <td>Column Totals: <u>105</u> (A)</td> <td><u>350</u> (B)</td> </tr> <tr> <td colspan="2" style="text-align: center;">Prevalence Index = B/A = <u>3.33</u></td> </tr> </table>	Total % Cover of:	Multiply by:	OBL species <u>0</u>	x 1 = <u>0</u>	FACW species <u>25</u>	x 2 = <u>50</u>	FAC species <u>20</u>	x 3 = <u>60</u>	FACU species <u>60</u>	x 4 = <u>240</u>	UPL species <u>0</u>	x 5 = <u>0</u>	Column Totals: <u>105</u> (A)	<u>350</u> (B)	Prevalence Index = B/A = <u>3.33</u>	
Total % Cover of:	Multiply by:																			
OBL species <u>0</u>	x 1 = <u>0</u>																			
FACW species <u>25</u>	x 2 = <u>50</u>																			
FAC species <u>20</u>	x 3 = <u>60</u>																			
FACU species <u>60</u>	x 4 = <u>240</u>																			
UPL species <u>0</u>	x 5 = <u>0</u>																			
Column Totals: <u>105</u> (A)	<u>350</u> (B)																			
Prevalence Index = B/A = <u>3.33</u>																				
2. _____																				
3. _____																				
4. _____																				
5. _____																				
25 = Total Cover																				
Herb Stratum (Plot size: <u>5 ft r</u> )																				
1. <u>Polystichum munitum</u>	20	<input checked="" type="checkbox"/>	FACU	<b>Hydrophytic Vegetation Indicators:</b> ___ 1 - Rapid Test for Hydrophytic Vegetation <input checked="" type="checkbox"/> 2 - Dominance Test is >50% ___ 3 - Prevalence Index is ≤3.0 <sup>1</sup> ___ 4 - Morphological Adaptations <sup>1</sup> (Provide supporting data in Remarks or on a separate sheet) ___ 5 - Wetland Non-Vascular Plants <sup>1</sup> ___ Problematic Hydrophytic Vegetation <sup>1</sup> (Explain) <sup>1</sup> Indicators of hydric soil and wetland hydrology must be present, unless disturbed or problematic.																
2. _____																				
3. _____																				
4. _____																				
5. _____																				
6. _____																				
7. _____																				
8. _____																				
9. _____																				
10. _____																				
11. _____																				
20 = Total Cover																				
Woody Vine Stratum (Plot size: <u>30 ft r</u> )																				
1. <u>Rubus armeniacus</u>	10	<input checked="" type="checkbox"/>	FAC	<b>Hydrophytic Vegetation Present?</b> Yes <input checked="" type="checkbox"/> No <input type="checkbox"/>																
2. _____																				
10 = Total Cover																				
% Bare Ground in Herb Stratum <u>80</u>																				

Remarks:

**SOIL**

Sampling Point: SL-1

Profile Description: (Describe to the depth needed to document the indicator or confirm the absence of indicators.)							
Depth (inches)	Matrix		Redox Features			Texture	Remarks
	Color (moist)	%	Color (moist)	%	Type <sup>1</sup>		
0 - 6	10YR 3/2	100					Silt Loam
6 - 18	10YR 4/3	100					Silt Loam
-							
-							
-							
-							
-							

<sup>1</sup>Type: C=Concentration, D=Depletion, RM=Reduced Matrix, CS=Covered or Coated Sand Grains. <sup>2</sup>Location: PL=Pore Lining, M=Matrix.

**Hydric Soil Indicators: (Applicable to all LRRs, unless otherwise noted.)** **Indicators for Problematic Hydric Soils<sup>3</sup>:**

<input type="checkbox"/> Histosol (A1)	<input type="checkbox"/> Sandy Gleyed Matrix (S4)	<input type="checkbox"/> 2 cm Muck (A10) (LRR A, E)
<input type="checkbox"/> Histic Epipedon (A2)	<input type="checkbox"/> Sandy Redox (S5)	<input type="checkbox"/> Iron-Manganese Masses (F12) (LRR D)
<input type="checkbox"/> Black Histic (A3)	<input type="checkbox"/> Stripped Matrix (S6)	<input type="checkbox"/> Red Parent Material (F21)
<input type="checkbox"/> Hydrogen Sulfide (A4)	<input type="checkbox"/> Loamy Mucky Mineral (F1) (except MLRA 1)	<input type="checkbox"/> Very Shallow Dark Surface (F22)
<input type="checkbox"/> 1 cm Muck (A9) (LRR D, G)	<input type="checkbox"/> Loamy Gleyed Matrix (F2)	<input type="checkbox"/> Other (Explain in Remarks)
<input type="checkbox"/> Depleted Below Dark Surface (A11)	<input type="checkbox"/> Depleted Matrix (F3)	
<input type="checkbox"/> Thick Dark Surface (A12)	<input type="checkbox"/> Redox Dark Surface (F6)	
<input type="checkbox"/> Iron Monosulfide (A18)	<input type="checkbox"/> Depleted Dark Surface (F7)	
<input type="checkbox"/> Sandy Mucky Mineral (S1)	<input type="checkbox"/> Redox Depressions (F8)	
<input type="checkbox"/> 2.5 cm Mucky Peat or Peat (S2) (LRR G)		

<sup>3</sup>Indicators of hydrophytic vegetation and wetland hydrology must be present, unless disturbed or problematic.

**Restrictive Layer (if observed):**

Type: \_\_\_\_\_  
Depth (inches): \_\_\_\_\_

**Hydric Soil Present?** Yes \_\_\_\_\_ No

Remarks:

**HYDROLOGY**

**Wetland Hydrology Indicators:**

Primary Indicators (minimum of one is required; check all that apply)

Secondary Indicators (2 or more required)

<input type="checkbox"/> Surface Water (A1)	<input type="checkbox"/> Water-Stained Leaves (B9) (except MLRA 1, 2, 4A, and 4B)	<input type="checkbox"/> Water-Stained Leaves (B9) (MLRA 1, 2, 4A, and 4B)
<input type="checkbox"/> High Water Table (A2)	<input type="checkbox"/> Salt Crust (B11)	<input type="checkbox"/> Drainage Patterns (B10)
<input type="checkbox"/> Saturation (A3)	<input type="checkbox"/> Aquatic Invertebrates (B13)	<input type="checkbox"/> Dry-Season Water Table (C2)
<input type="checkbox"/> Water Marks (B1)	<input type="checkbox"/> Hydrogen Sulfide Odor (C1)	<input type="checkbox"/> Saturation Visible on Aerial Imagery (C9)
<input type="checkbox"/> Sediment Deposits (B2)	<input type="checkbox"/> Oxidized Rhizospheres on Living Roots (C3)	<input type="checkbox"/> Geomorphic Position (D2)
<input type="checkbox"/> Drift Deposits (B3)	<input type="checkbox"/> Presence of Reduced Iron (C4)	<input type="checkbox"/> Shallow Aquitard (D3)
<input type="checkbox"/> Algal Mat or Crust (B4)	<input type="checkbox"/> Recent Iron Reduction in Tilled Soils (C6)	<input type="checkbox"/> FAC-Neutral Test (D5)
<input type="checkbox"/> Iron Deposits (B5)	<input type="checkbox"/> Stunted or Stressed Plants (D1) (LRR A)	<input type="checkbox"/> Raised Ant Mounds (D6) (LRR A)
<input type="checkbox"/> Surface Soil Cracks (B6)	<input type="checkbox"/> Other (Explain in Remarks)	<input type="checkbox"/> Frost-Heave Hummocks (D7)
<input type="checkbox"/> Inundation Visible on Aerial Imagery (B7)		
<input type="checkbox"/> Sparsely Vegetated Concave Surface (B8)		

**Field Observations:**

Surface Water Present? Yes \_\_\_\_\_ No  Depth (inches): \_\_\_\_\_  
 Water Table Present? Yes \_\_\_\_\_ No  Depth (inches): \_\_\_\_\_  
 Saturation Present? Yes \_\_\_\_\_ No  Depth (inches): \_\_\_\_\_  
 (includes capillary fringe)

**Wetland Hydrology Present?** Yes \_\_\_\_\_ No

Describe Recorded Data (stream gauge, monitoring well, aerial photos, previous inspections), if available:

Remarks:

**VEGETATION Continued** – Use scientific names of plants.

Sampling Point: SL-1

<u>Tree Stratum</u>	<u>Absolute % Cover</u>	<u>Dominant Species?</u>	<u>Indicator Status</u>	<b>Definitions of Vegetation Strata:</b>  <b>Tree</b> – Woody plants 3 in. (7.6 cm) or more in diameter at breast height (DBH), regardless of height.  <b>Sapling/Shrub</b> – Woody plants less than 3 in. DBH, regardless of height.  <b>Herb</b> – All herbaceous (non-woody) plants, including herbaceous vines, regardless of size.  <b>Woody Vine</b> – All woody vines, regardless of height.
5. _____	_____	_____	_____	
6. _____	_____	_____	_____	
7. _____	_____	_____	_____	
8. _____	_____	_____	_____	
9. _____	_____	_____	_____	
10. _____	_____	_____	_____	
11. _____	_____	_____	_____	
12. _____	_____	_____	_____	
	<u>50</u>	=Total Cover		
<u>Sapling/Shrub Stratum</u>				
6. _____	_____	_____	_____	
7. _____	_____	_____	_____	
8. _____	_____	_____	_____	
9. _____	_____	_____	_____	
10. _____	_____	_____	_____	
11. _____	_____	_____	_____	
12. _____	_____	_____	_____	
13. _____	_____	_____	_____	
	<u>25</u>	=Total Cover		
<u>Herb Stratum</u>				
12. _____	_____	_____	_____	
13. _____	_____	_____	_____	
14. _____	_____	_____	_____	
15. _____	_____	_____	_____	
16. _____	_____	_____	_____	
17. _____	_____	_____	_____	
18. _____	_____	_____	_____	
19. _____	_____	_____	_____	
20. _____	_____	_____	_____	
21. _____	_____	_____	_____	
22. _____	_____	_____	_____	
23. _____	_____	_____	_____	
	<u>20</u>	=Total Cover		
<u>Woody Vine Stratum</u>				
3. _____	_____	_____	_____	
4. _____	_____	_____	_____	
5. _____	_____	_____	<u>FAC</u>	
6. _____	_____	_____	_____	
7. _____	_____	_____	_____	
	<u>10</u>	=Total Cover		

Remarks:



Sign at Street Entrance



View North from Upper Parking Lot of Hotel



View of Stream West of Street Entrance



Area at Sample Location 1 (SL-1)



Off-Site Wetland East of Street Entrance



View South from Hotel of Parking Lots



West Side of Parcel Adjacent to Hwy. 512



East Side of Parcel, View North from Upper Parking Lot



Wetland name or number: Offsite Wetland

# RATING SUMMARY - Western Washington

Name of wetland (or ID#): Offsite Wetland      Date of site visit: 09/22/2025

Rated By: Jeffery Jones      Trained by Ecology? Yes [X] No [ ]      Date of Training: 12/12/2014

HGM Class used for rating: Depressional

Wetland has multiple HGM classes? Yes [X] No [ ]

**NOTE: Form is not complete without the figures requested** (figures can be combined).

Source of base aerial photo/map: WATOR

**OVERALL WETLAND CATEGORY: [Category III]** (based on functions [X] or special characteristics [ ])

## 1. Category of wetland based on FUNCTIONS

- Category I** - Total score = 23 - 27
- Category II** - Total score = 20 - 22
- Category III** - Total score = 16 - 19
- Category IV** - Total score = 9 - 15

**Score for each function based on three ratings**  
(order of ratings is not important)

9 = H,H,H  
8 = H,H,M  
7 = H,H,L  
7 = H,M,M  
6 = H,M,L  
6 = M,M,M  
5 = H,L,L  
5 = M,M,L  
4 = M,L,L  
3 = L,L,L

FUNCTION	Improving Water Quality	Hydrologic	Habitat	
Site Potential	<b>M</b>	<b>L</b>	<b>L</b>	
Landscape Potential	<b>M</b>	<b>H</b>	<b>L</b>	
Value	<b>H</b>	<b>L</b>	<b>H</b>	<b>Total</b>
<b>Score Based on Ratings</b>	<b>7</b>	<b>5</b>	<b>5</b>	<b>17</b>

## 2. Category based on SPECIAL CHARACTERISTICS of wetland

CHARACTERISTIC	CATEGORY
Estuarine	
Wetland of High Conservation Value	
Bog	
Forested	
Coastal Lagoon	
Interdunal	
None of the above	<b>Not Applicable</b>

**Wetland name or number:** Offsite Wetland

**Maps and figures required to answer questions correctly for Western Washington**

Depressional Wetlands

Map of:	To answer questions:	Figure #
Cowardin plant classes	D 1.3, H 1.1, H 1.4	<input type="text"/>
Hydroperiods	D 1.4, H 1.2	<input type="text"/>
Location of outlet ( <i>can be added to map of hydroperiods</i> )	D 1.1, D 4.1	<input type="text"/>
Boundary of area within 150 ft of the wetland ( <i>can be added to another figure</i> )	D 2.2, D 5.2	<input type="text"/>
Map of the contributing basin	D 4.3, D 5.3	<input type="text"/>
1km Polygon: Area that extends 1km from entire wetland edge - including polygons for accessible habitat and undisturbed habitat	H 2.1, H 2.2, H 2.3	<input type="text"/>
Screen capture of map of 303(d) listed waters in basin (from Ecology website)	D 3.1, D 3.2	<input type="text"/>
Screen capture of list of TMDLs for WRIA in which unit is found (from web)	D 3.3	<input type="text"/>

Wetland name or number: Offsite Wetland

**DEPRESSIONAL AND FLATS WETLANDS****Water Quality Functions** - Indicators that the site functions to improve water quality**D 1.0 Does the site have the potential to improve water quality?****D 1.1** What are the characteristics of surface water outflows from the wetland?

Wetland has no surface water outlet.	points = 3	
Wetland has an intermittently flowing, or highly constricted, outlet.	points = 2	
Wetland has an unconstricted, or slightly constricted, surface outlet that is permanently flowing	points = 1	
Wetland is a flat depression whose outlet is a permanently flowing ditch.	points = 1	<b>Score: 2</b>

**D 1.2** Is the soil 2 in. below the surface a true clay or organic soil?

Mapped as true clay or organic (muck or peat)	points = 4	
Soil texture identified as clay or organic in field	points = 4	
Soil texture identified as clay or organic by laboratory test	points = 4	
None of the above	points = 0	<b>Score: 4</b>

**D 1.3** What are the characteristics and distribution of persistent plants?

Wetland has persistent, ungrazed, plants > 95% of area	points = 5	
Wetland has persistent, ungrazed, plants > 50% of area	points = 3	
Wetland has persistent, ungrazed plants > 10% of area	points = 1	
Wetland has persistent, ungrazed plants < 10% of area	points = 0	<b>Score: 5</b>

**D 1.4** What are the characteristics of seasonal ponding or inundation in the wetland area?

Area seasonally ponded is > 50% total area of wetland	points = 4	
Area seasonally ponded is equal to or > 25% total area of wetland	points = 2	
Area seasonally ponded is < 25% total area of wetland	points = 0	<b>Score: 0</b>

**Total for D 1:** **11****Rating of Site Potential**

[ ] 12-16 = H [X] 6-11 = M [ ] 0-5 = L

Record the rating on the first page

**D 2.0 Does the landscape have the potential to support the water quality function of the site?****D 2.1** Does the wetland unit receive stormwater discharges?

Yes	points = 1	
No	points = 0	<b>Score: 1</b>

**D 2.2** Is >10% of the area within 150ft of the wetland in land uses that generate pollutants in surface runoff?

Yes	points = 1	
No	points = 0	<b>Score: 1</b>

**D 2.3** Are there septic systems within 250ft of the wetland?

Yes	points = 1	
No	points = 0	<b>Score: 0</b>

**D 2.4** Are there other sources of pollutants coming into the wetland that are not listed in questions D 2.1-D 2.3?

Yes	points = 1	
No	points = 0	<b>Score: 0</b>

**Wetland name or number:** Offsite Wetland

<b>D 2.5</b> What are the other sources of pollutants coming into the wetland?	
<b>Total for D 2:</b>	<b>2</b>

**Rating of Landscape Potential**       3-4 = H  1-2 = M  0 = L*Record the rating on the first page*

<b>D 3.0</b> Is the water quality improvement provided by the site valuable to society?	
<b>D 3.1</b> Does the wetland discharge directly (i.e., within 1 mi) to a stream, river, lake, or marine water that is on the 303(d) list?	
Yes	points = 1
No	points = 0
<b>Score: 0</b>	
<b>D 3.2</b> Is the wetland in a basin or sub-basin where an aquatic resource is on the 303(d) list?	
Yes	points = 1
No	points = 0
<b>Score: 0</b>	
<b>D 3.3</b> Has the site been identified in a watershed or local plan as important for maintaining water quality?	
Yes	points = 2
No	points = 0
<b>Score: 2</b>	
<b>Total for D 3:</b>	
<b>2</b>	

**Rating of Value**       2-4 = H  1 = M  0 = L*Record the rating on the first page*

<b><u>DEPRESSIONAL AND FLATS WETLANDS</u></b>	
<b>Hydrologic Functions</b> - Indicators that the site functions to reduce flooding and stream degradation	
<b>D 4.0</b> Does the site have the potential to reduce flooding and erosion?	
<b>D 4.1</b> What are the characteristics of surface water outflows from the wetland?	
Wetland has no surface water outlet.	points = 4
Wetland has an intermittently flowing, or highly constricted, outlet.	points = 2
Wetland is a flat depression whose outlet is a permanently flowing ditch.	points = 1
Wetland has an unconstricted, or slightly constricted, surface outlet that is permanently flowing	points = 0
<b>Score: 2</b>	
<b>D 4.2</b> What is the depth of storage during the wet periods?	
Marks of ponding are 3ft or more above the surface or bottom of the outlet.	points = 7
Marks of ponding are between 2ft to <3ft from the surface or bottom of the outlet.	points = 5
Marks of ponding are at least 0.5ft to <2ft from the surface or the bottom of the outlet.	points = 3
The wetland is a "headwater" wetland.	points = 3
The wetland is flat but has small depressions on the surface that trap water.	points = 1
Marks of ponding are less than 0.5ft (6in).	points = 0
<b>Score: 3</b>	

**Wetland name or number:** Offsite Wetland

<b>D 4.3</b> <u>What is the contribution of the wetland to storage in the watershed?</u>		
The area of the basin is less than 10 times the area of the unit	points = 5	
The area of the basin is 10 to 100 times the area of the unit	points = 3	
The area of the basin is more than 100 times the area of the unit	points = 0	
Entire wetland is in the Flats class	points = 5	<b>Score: 0</b>
<b>Total for D 4:</b>		<b>5</b>

**Rating of Site Potential**

[ ] 12-16 = H [ ] 6-11 = M [X] 0-5 = L

Record the rating on the first page

<b>D 5.0</b> Does the landscape have the potential to support hydrologic functions of the site?		
<b>D 5.1</b> <u>Does the wetland unit receive stormwater discharges?</u>		
Yes	points = 1	
No	points = 0	<b>Score: 1</b>
<b>D 5.2</b> <u>Is &gt;10% of the area within 150 ft of the wetland in land uses that generate excess runoff?</u>		
Yes	points = 1	
No	points = 0	<b>Score: 1</b>
<b>D 5.3</b> <u>Is more than 25% of the contributing basin of the wetland covered with intensive human land uses?</u>		
Yes	points = 1	
No	points = 0	<b>Score: 1</b>
<b>Total for D 5:</b>		<b>3</b>

**Rating of Landscape Potential**

[X] 3 = H [ ] 1-2 = M [ ] 0 = L

Record the rating on the first page

<b>D 6.0</b> Are the hydrologic functions provided by the site valuable to society?		
<b>D 6.1</b> <u>Is the wetland in a landscape that has flooding problems?</u>		
Flooding occurs in a sub-basin that is immediately down-gradient of the wetland.	points = 2	
Surface flooding problems are in a sub-basin farther down-gradient.	points = 1	
Flooding from groundwater is an issue in the basin.	points = 1	
The existing or potential outflow from the wetland is so constrained that water cannot reach areas that flood.	points = 0	
There are no problems with flooding downstream of the wetland.	points = 0	<b>Score: 0</b>
<b>D 6.2</b> <u>Has the site been identified as important for flood storage or flood conveyance in a regional flood control plan?</u>		
Yes	points = 2	
No	points = 0	<b>Score: 0</b>
<b>Total for D 6:</b>		<b>0</b>

**Rating of Value**

[ ] 2-4 = H [ ] 1 = M [X] 0 = L

Record the rating on the first page

Wetland name or number: Offsite Wetland

## **HABITAT FUNCTIONS**

**These questions apply to wetlands of all HGM classes** - Indicators that the site functions to provide important habitat

### **H 1.0 Does the wetland have the potential to provide habitat for many species?**

#### **H 1.1** What is the structure of the plant community?

Aquatic Bed		
Emergent		
Scrub-shrub		
Forested		
Multiple strata within the Forested class (canopy, sub-canopy, shrubs, herbaceous, moss/ground cover)		
4 structures or more	points = 4	
3 structures	points = 2	
2 structures	points = 1	
1 structure	points = 0	
No structures present	points = 0	<b>Score: 0</b>

#### **H 1.2** What are the hydroperiods that meet the size thresholds in the wetland?

Permanently flooded or inundated		
Seasonally flooded or inundated		
Occasionally flooded or inundated		
Saturated only		
Permanently flowing stream or river in, or adjacent to, the wetland		
Seasonally flowing stream in, or adjacent to, the wetland		
Lake Fringe wetland		
Freshwater Tidal wetland		
4 or more types present	points = 3	
3 types present or Lake Fringe / Freshwater Tidal Fringe	points = 2	
2 types present	points = 1	
1 type present	points = 0	
None present	points = 0	<b>Score: 2</b>

#### **H 1.3** What is the richness of the plant species in the wetland?

>19 species	points = 2	
5-19 species	points = 1	
<5 species	points = 0	<b>Score: 1</b>

**Wetland name or number:** Offsite Wetland

<b>H 1.4</b> <u>What is the interspersion of habitats?</u>	
High	points = 3
Moderate	points = 2
Low	points = 1
None	points = 0
<b>Score: 0</b>	
<b>H 1.5</b> <u>What are the special habitat features in the wetland?</u>	
Large, downed, woody debris within the wetland (>4in diameter and 6ft long).	
Standing snags (dbh >4in) within the wetland	
Undercut banks are present for at least 6.6ft (2m) and/or overhanging plants extend at least 3.3ft (1m) over open water or a stream (or ditch) in, or contiguous with the wetland, for at least 33ft (10m)	
Stable steep banks of fine material that might be used by beaver or muskrat for denning (>30 degree slope) OR signs of recent beaver activity are present (cut shrubs or trees that have not yet weathered where wood is exposed)	
At least 0.25ac of thin-stemmed persistent plants or woody branches are present in areas that are permanently or seasonally inundated (structures for egg-laying by amphibians)	
Invasive plants cover less than 25% of the wetland area in every stratum of plants (see H 1.1 for list of strata)	
6 habitats selected	points = 6
5 habitats selected	points = 5
4 habitats selected	points = 4
3 habitats selected	points = 3
2 habitats selected	points = 2
1 habitat selected	points = 1
No habitats selected	points = 0
<b>Score: 2</b>	
<b>Total for H 1:</b>	
<b>5</b>	

**Rating of Site Potential**

[ ] 15-18 = H [ ] 7-14 = M [X] 0-6 = L

Record the rating on the first page

**H 2.0 Does the landscape have the potential to support habitat functions of the site?**

<b>H 2.1</b> <u>What is the percentage of accessible habitat within 1km of the wetland?</u>	
>33% of 1km Polygon	points = 3
20-33% of 1km Polygon	points = 2
10-19% of 1km Polygon	points = 1
<10% of 1km Polygon	points = 0
<b>Score: 0</b>	
<b>H 2.2</b> <u>What is the percentage of total habitat in a 1km polygon around the wetland?</u>	
Total habitat is >50% of the Polygon	points = 3
Total habitat is 10-50% of the Polygon and in 1-3 patches	points = 2
Total habitat is 10-50% of the Polygon and in >3 patches	points = 1
Total habitat is <10% of the Polygon	points = 0
<b>Score: 0</b>	

**Wetland name or number:** Offsite Wetland

<b>H 2.3</b> <u>What is the land use intensity in the 1km polygon?</u>		
50% of the Polygon is high intensity land use	points = -2	
<50% of the Polygon is high intensity land use	points = 0	<b>Score: -2</b>
<b>Total for H 2:</b>		<b>-2</b>

**Rating of Landscape Potential**

[ ] 4-6 = H [ ] 1-3 = M [X] 0 = L

*Record the rating on the first page***H 3.0 Is the habitat provided by the site valuable to society?**

<b>H 3.1</b> <u>Does the site provide habitat for species valued in laws, regulations, or policies?</u>		
Aspen Stands		
Biodiversity Areas and Corridors		
Herbaceous Balds		
Old-growth/Mature Forests		
Oregon White Oak		
Riparian		
Westside Prairie		
Fresh Deepwater		
Instream		
Nearshore (Coastal, Open Coast, Puget Sound)		
Caves		
Cliffs		
Snags and Logs		
Talus		
<b>The following criteria automatically score 2 points:</b>		
The wetland provides habitat for Threatened or Endangered species		
The wetland is mapped as a location for an individual WDFW priority species		
The wetland is a Wetland of High Conservation Value		
The wetland has been categorized as an important habitat site in a local plan		
The wetland has 3 or more WDFW priority habitats within 100m, or meets the criteria for societal value	points = 2	
The site has 1 or 2 WDFW priority habitats within 100m	points = 1	
The site does not meet any of the criteria for societal value	points = 0	<b>Score: 2</b>
<b>Total for H 3:</b>		<b>2</b>

**Rating of Value**

[X] 2 = H [ ] 1 = M [ ] 0 = L

*Record the rating on the first page*

**Wetland name or number:** Offsite Wetland

## **CATEGORIZATION BASED ON SPECIAL CHARACTERISTICS**

### **SC 1.0 Estuarine Wetlands**

**SC 1.1** Does the wetland meet all of the following criteria for Estuarine wetlands?

The dominant water regime is tidal

The wetland is vegetated

The water salinity is greater than 0.5 ppt

Yes - Go to SC 1.2

No - Not an Estuarine Wetland

**Result: Not an  
Estuarine Wetland**

**SC 1.2** Is the wetland within a National Wildlife Refuge, National Park, National Estuary Reserve, Natural Area Preserve, State Park or Educational, Environmental, or Scientific Reserve designated under WAC 332-30-151?

Yes - Category I Estuarine Wetland

No - Go to SC 1.3

**Result:**

**SC 1.3** Is the wetland unit at least 1ac in size and meets at least two of the following three conditions?

The wetland is relatively undisturbed (has no diking, ditching, filling, cultivation, grazing), and has less than 10% cover of non-native plant species.

At least 75% of the landward edge of the wetland has a 100ft buffer of shrub, forest, or un-grazed or un-mowed grassland

The wetland has at least two of the following features: tidal channels, depressions with open water, or contiguous freshwater wetlands.

Yes - Category I Estuarine Wetland

No - Category II Estuarine Wetland

**Result:**

### **SC 2.0 Wetlands of High Conservation Value**

**SC 2.1** Does the wetland overlap with any known or historical rare plant or rare & high-quality ecosystem polygons on the WNHP Data Explorer?

Yes - Category I Wetland of High Conservation Value

No - Go to SC 2.2

**Result: Go to SC 2.2**

**SC 2.2** Does the wetland have a rare plant species, rare plant community, or high-quality common plant community that may qualify the site as a WHCV?

Yes - Category I Wetland of High Conservation Value

No - Not a Wetland of High Conservation Value

**Result: Not a Wetland  
of High Conservation  
Value**

**Wetland name or number:** Offsite Wetland

### SC 3.0 Bogs

**SC 3.1** Does an area within the wetland unit have organic soil horizons, either peats or mucks, that compose 16in or more of the first 32in of the soil profile?

Yes - Go to SC 3.3

No - Go to SC 3.2

**Result: Go to SC 3.3**

**SC 3.2** Does an area within the wetland unit have organic soils, either peats or mucks, that are less than 16 in deep over bedrock, or an impermeable hardpan such as clay or volcanic ash, or that are floating on top of a lake or pond?

Yes - Go to SC 3.3

No - Not a Bog Wetland

**Result:**

**SC 3.3** Does an area with peats or mucks have more than 70% cover of mosses at ground level, AND at least 30% cover of plant species listed in the table provided in the instructions?

Yes - Category I Bog Wetland

No - Go to SC 3.4

**Result: Go to SC 3.4**

**SC 3.4** Is an area with peats or mucks forested (>30% cover) with Sitka spruce, subalpine fir, western red cedar, western hemlock, lodgepole pine, quaking aspen, Engelmann Spruce, or western white pine AND any of the species (or combinations of species) listed in the table found in the instructions provide more than 30% of the cover under the canopy?

Yes - Category I Bog Wetland

No - Not a Bog Wetland

**Result: Not a Bog Wetland**

### SC 4.0 Forested Wetlands

**SC 4.1** Does the wetland have at least 1 contiguous acre of forest that meets one of the following criteria?

Old-growth forests

Mature forests

Yes - Category I Forested Wetland

No - Not a Forested Wetland

**Result: Not a Forested Wetland**

**Wetland name or number:** Offsite Wetland

### SC 5.0 Wetlands in Coastal Lagoons

**SC 5.1** Coastal Lagoons: Does the wetland meet all of the following criteria of a wetland in a coastal lagoon?

The wetland lies in a depression adjacent to marine waters that is wholly or partially separated from marine waters by sandbanks, gravel banks, shingle, or rocks

The depression in which the wetland is located contains ponded water that is saline or brackish (>0.5 ppt) during most of the year in at least a portion of the open water area (measured near the bottom)

The lagoon retains some of its surface water at low tide during spring tides

Yes - Go to SC 5.2

No - Not a Coastal Lagoon Wetland

**Result: Not a Coastal Lagoon Wetland**

**SC 5.2** Does the wetland meet all of the following three conditions?

The wetland is relatively undisturbed (has no diking, ditching, filling, cultivation, grazing), and has less than 20% cover of aggressive, opportunistic plant species (see list of species).

At least 75% of the landward edge of the wetland has a 100ft buffer of shrub, forest, or un-grazed or un-mowed grassland.

the wetland is larger than 0.10ac (4350 sqft)

Yes - Category I Coastal Lagoon

No - Category II Coastal Lagoon

**Result:**

### SC 6.0 Interdunal Wetlands

**SC 6.1** Is the wetland west of the 1889 line (also called the Western Boundary of Upland Ownership WBUO)?

Yes - Go to SC 6.2

No - Not an Interdunal Wetland

**Result: Not an Interdunal Wetland**

**SC 6.2** Is the wetland 1ac or larger in size, or a mosaic that is 1ac or larger in size?

Wetland is larger than 1ac in size - Go to SC 6.3

Wetland is a mosaic larger than 1ac is size - Category II Interdunal Wetland

No - Go to SC 6.4

**Result:**

**SC 6.3** Does the wetland score 8 or 9 points for the habitat functions?

Yes - Category I Interdunal Wetland

No - Category II Interdunal Wetland

**Result:**

**SC 6.4** Is the wetland unit between 0.1ac and 1ac, or in a mosaic of wetlands that is between 0.1ac and 1ac in size?

Yes - Category III Interdunal Wetland

No - Category IV Interdunal Wetland

**Result:**

**Wetland name or number:** Offsite Wetland

<b>Category of wetland based on Special Characteristics</b>	<b>Special Characteristics</b>
If you answered No for all types, enter "Not Applicable" on Summary Form	<b>Category: Not Applicable</b>



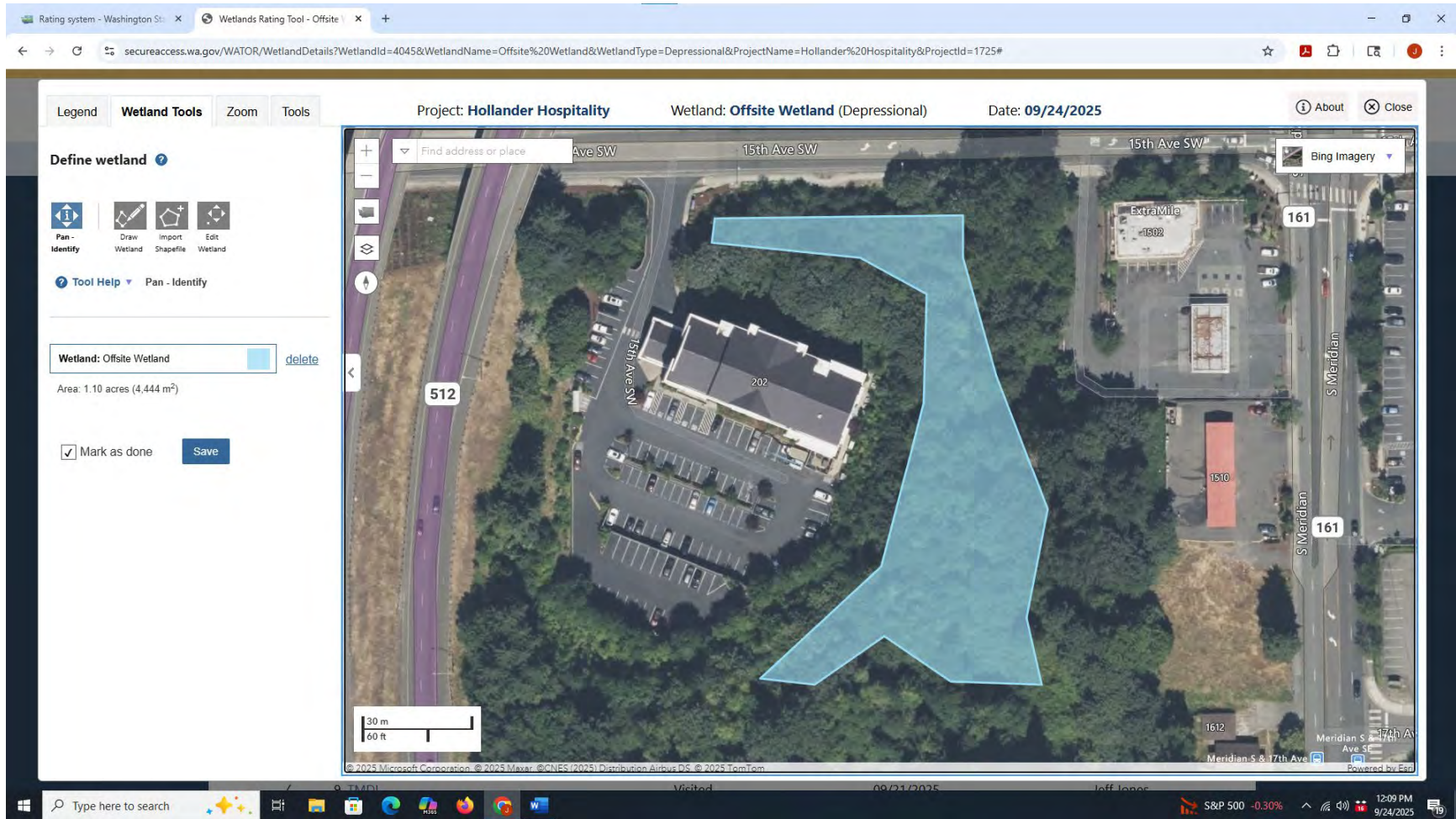


Figure 1 – Define Wetland

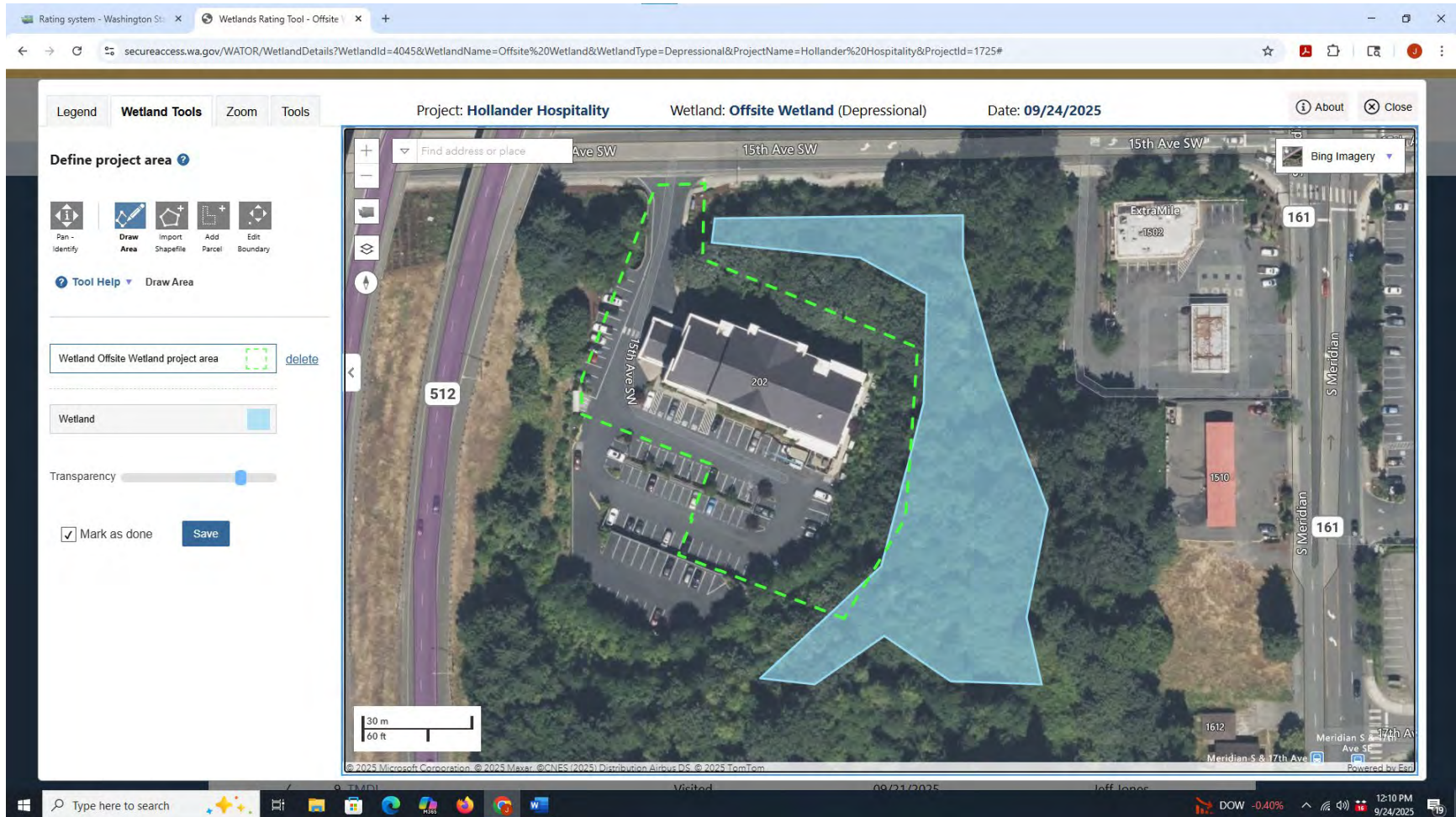


Figure 2 -Project Area

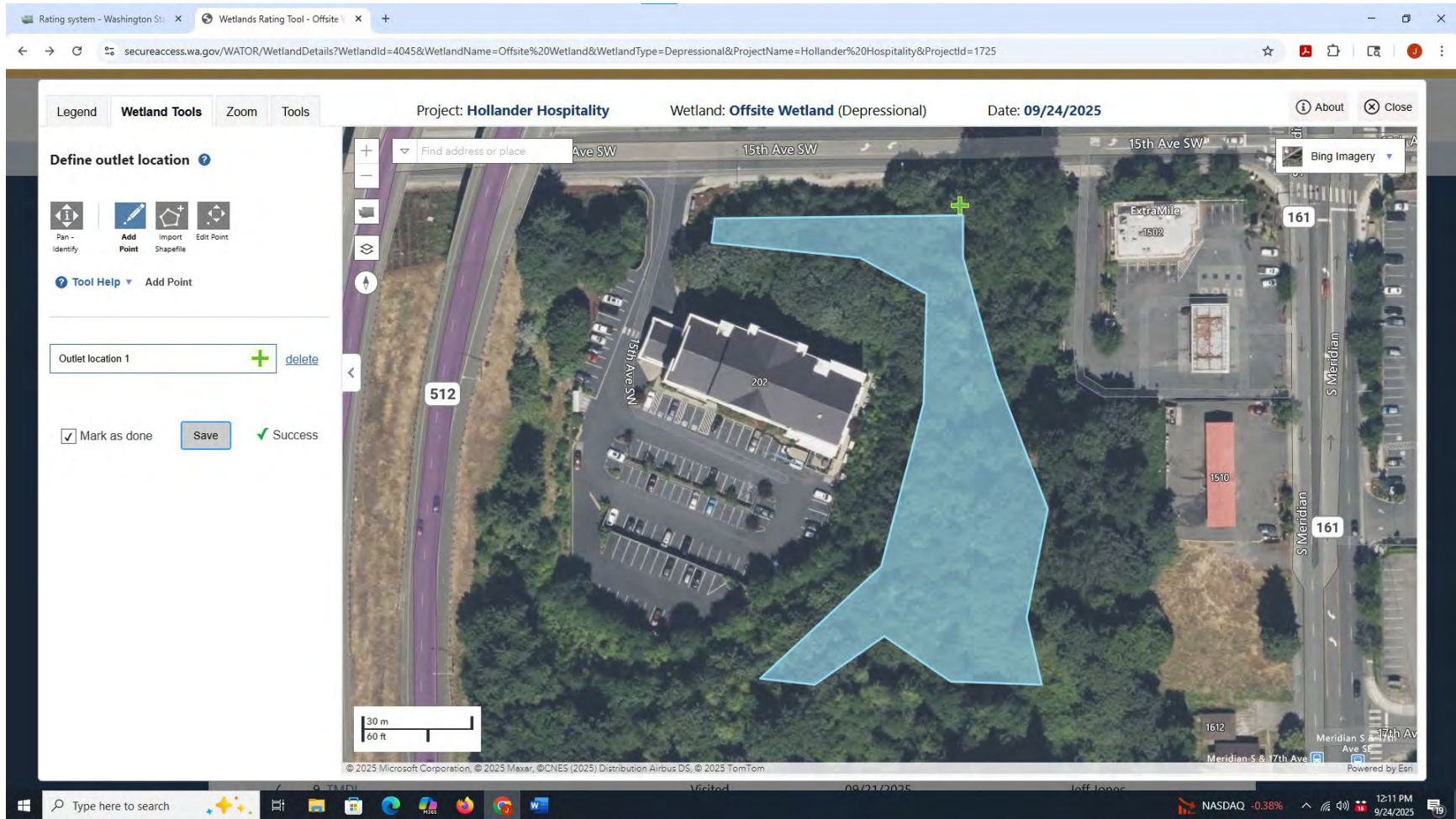


Figure 3 – Outlet

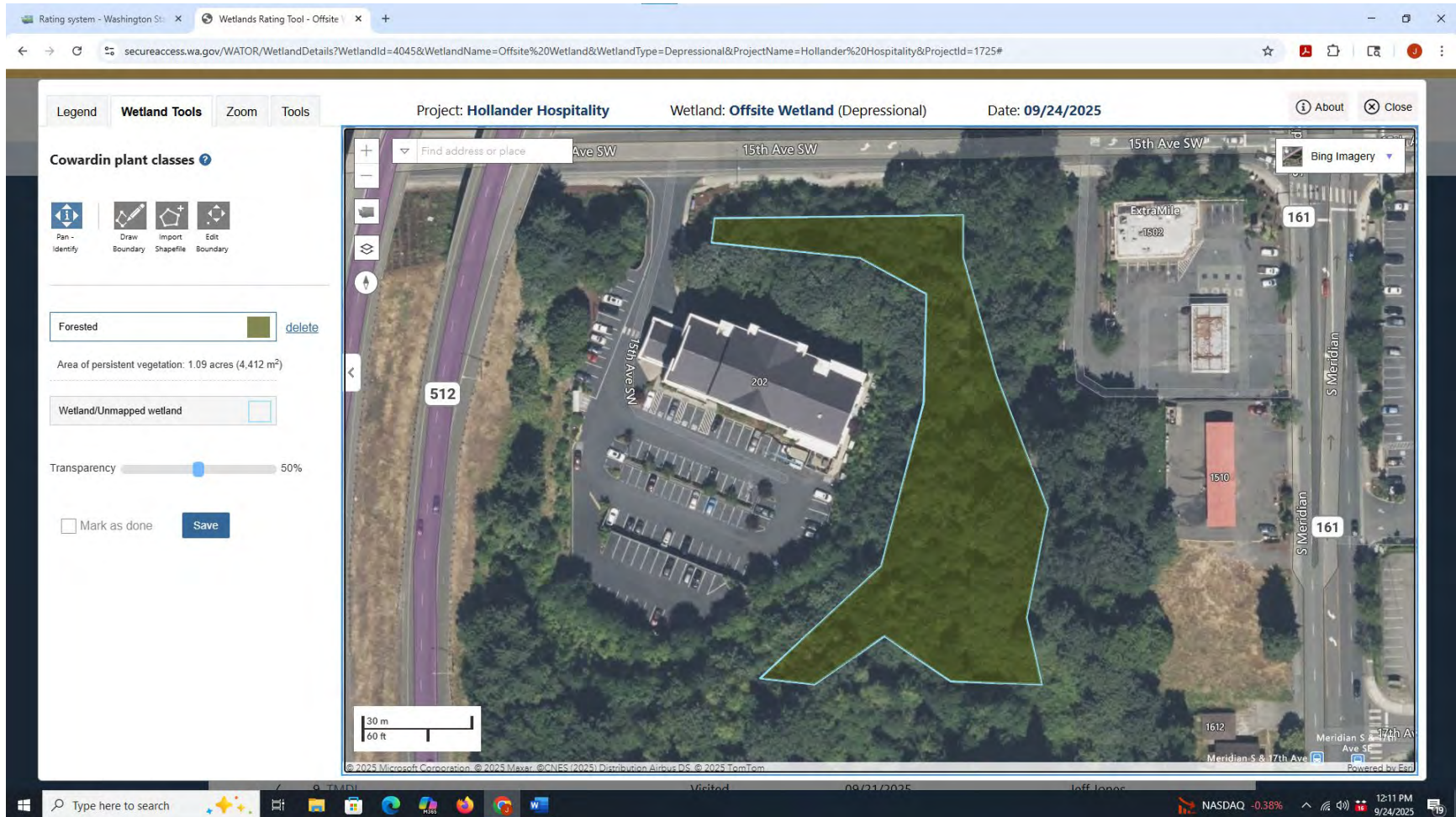


Figure 4 – Cowardin Classes

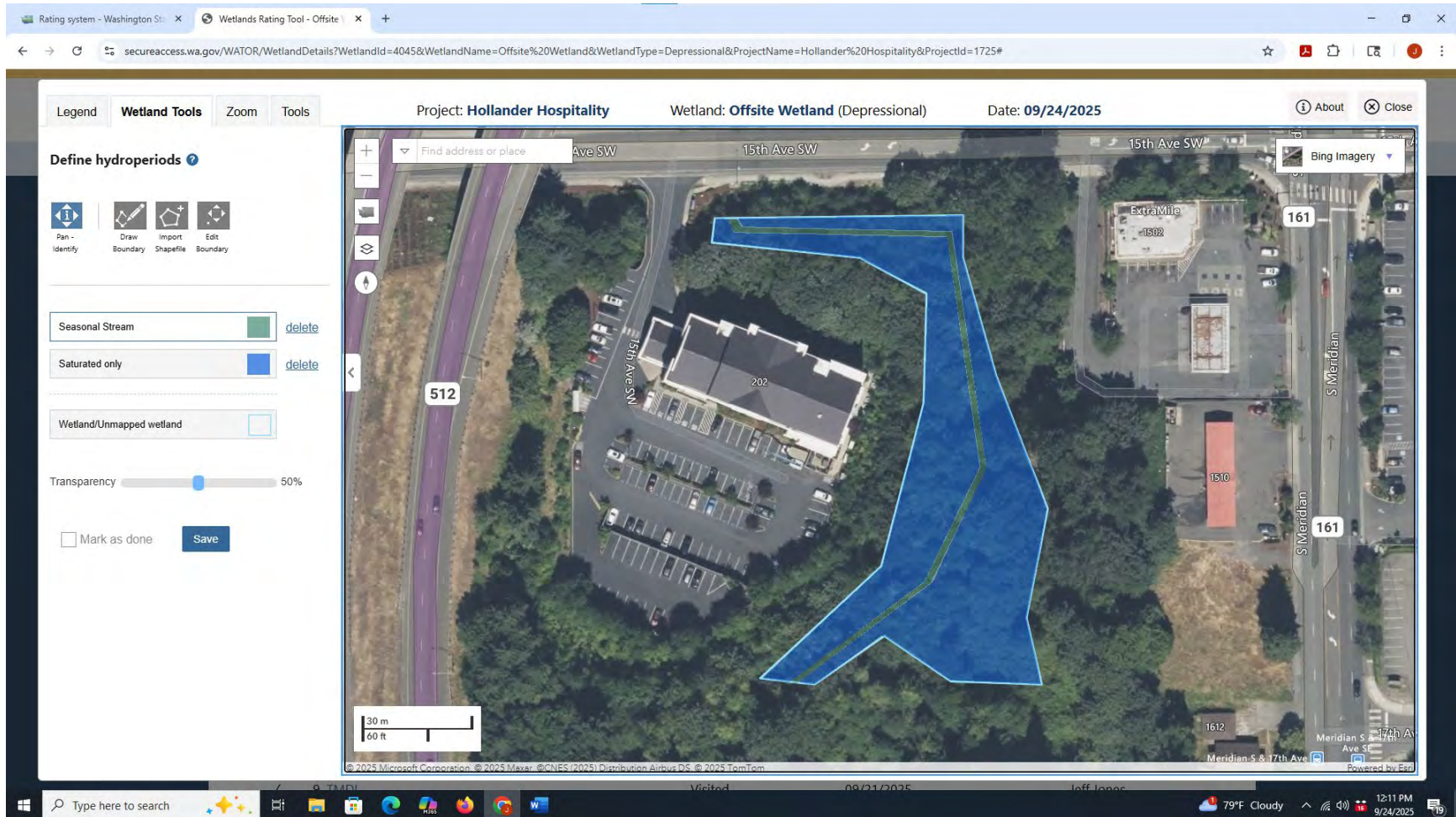


Figure 5 – Hydroperiods

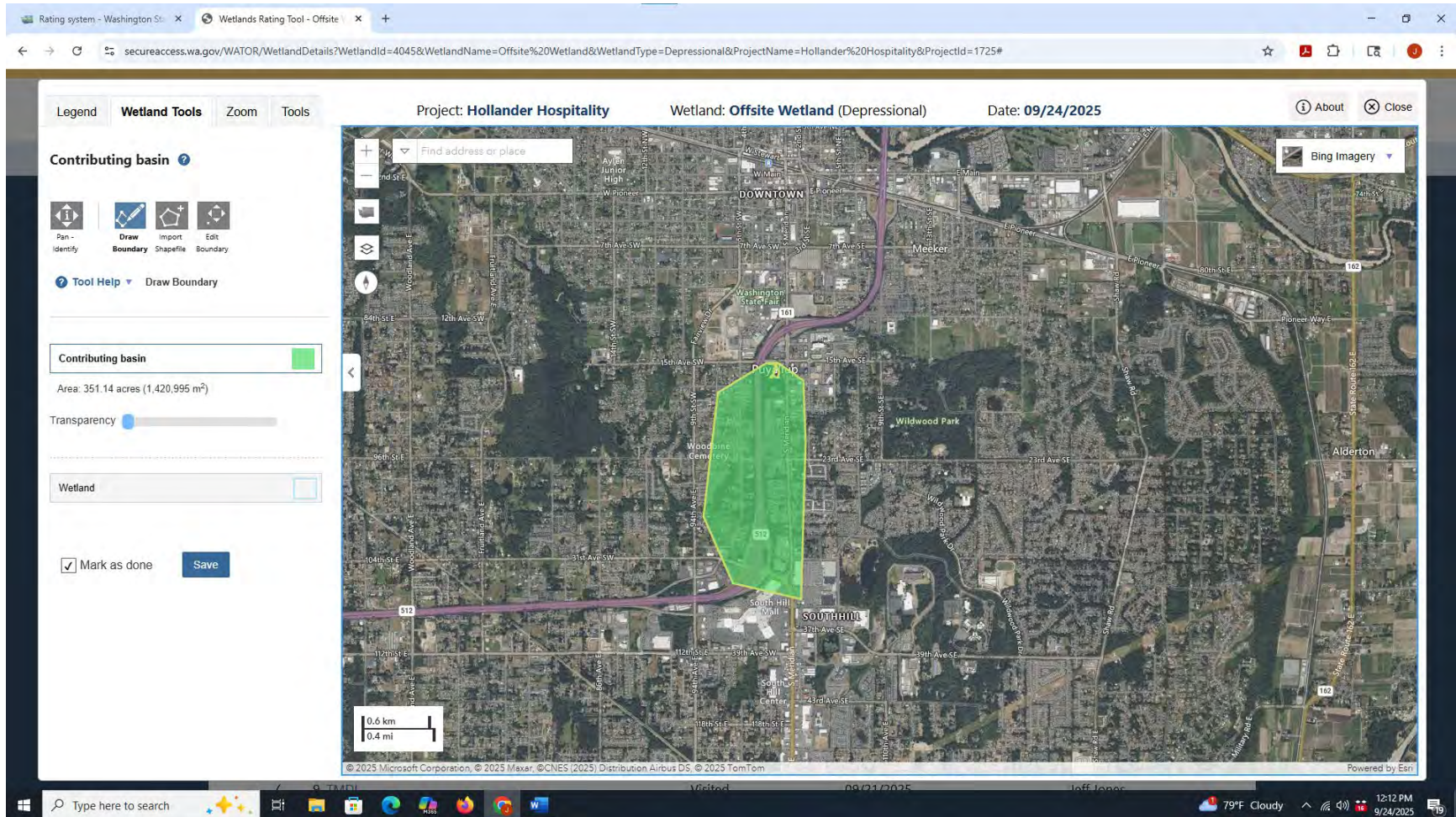


Figure 6 – Contributing Basin

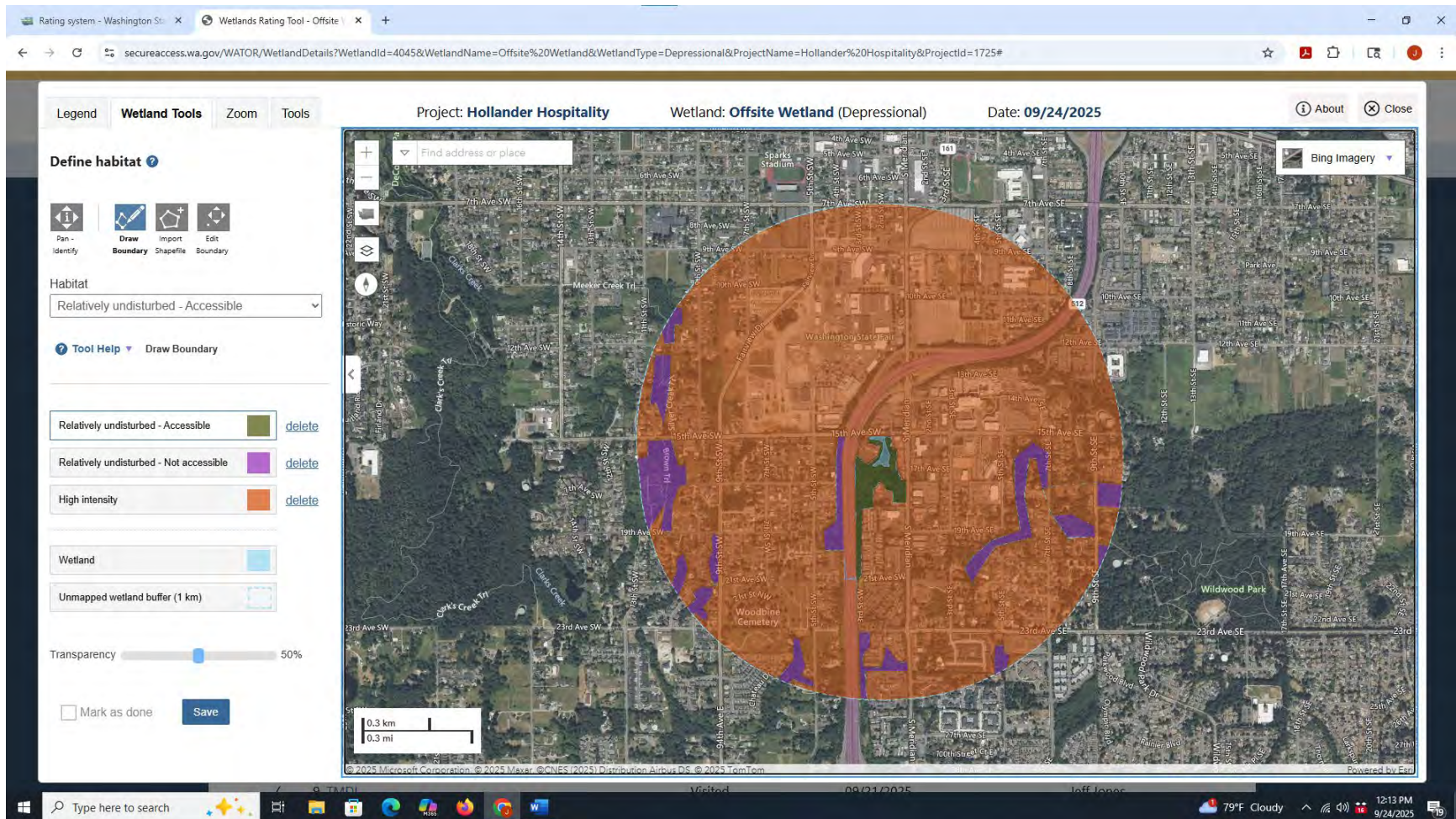


Figure 7 – Habitat

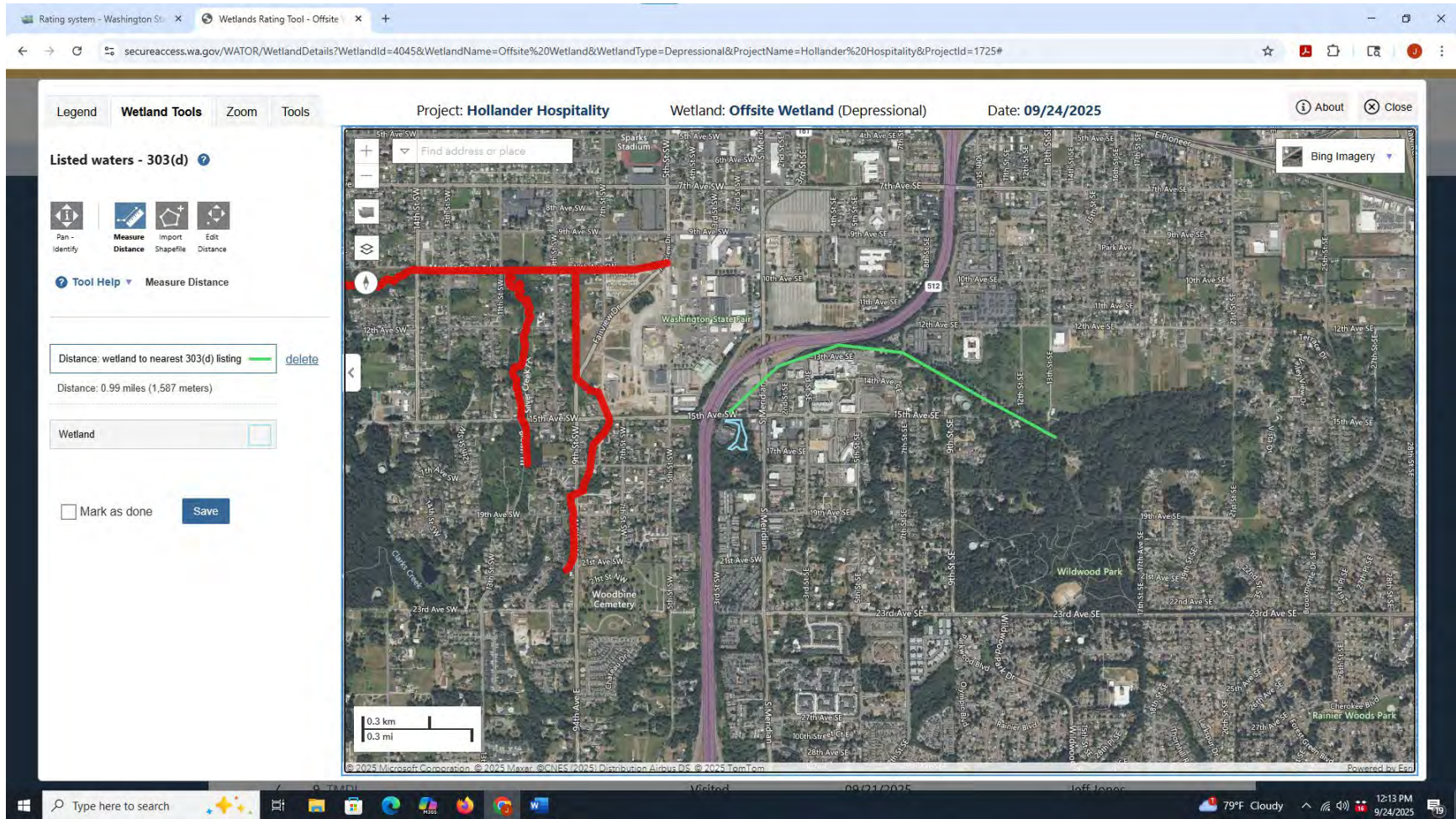


Figure 8 – 303(d) Listed Waters

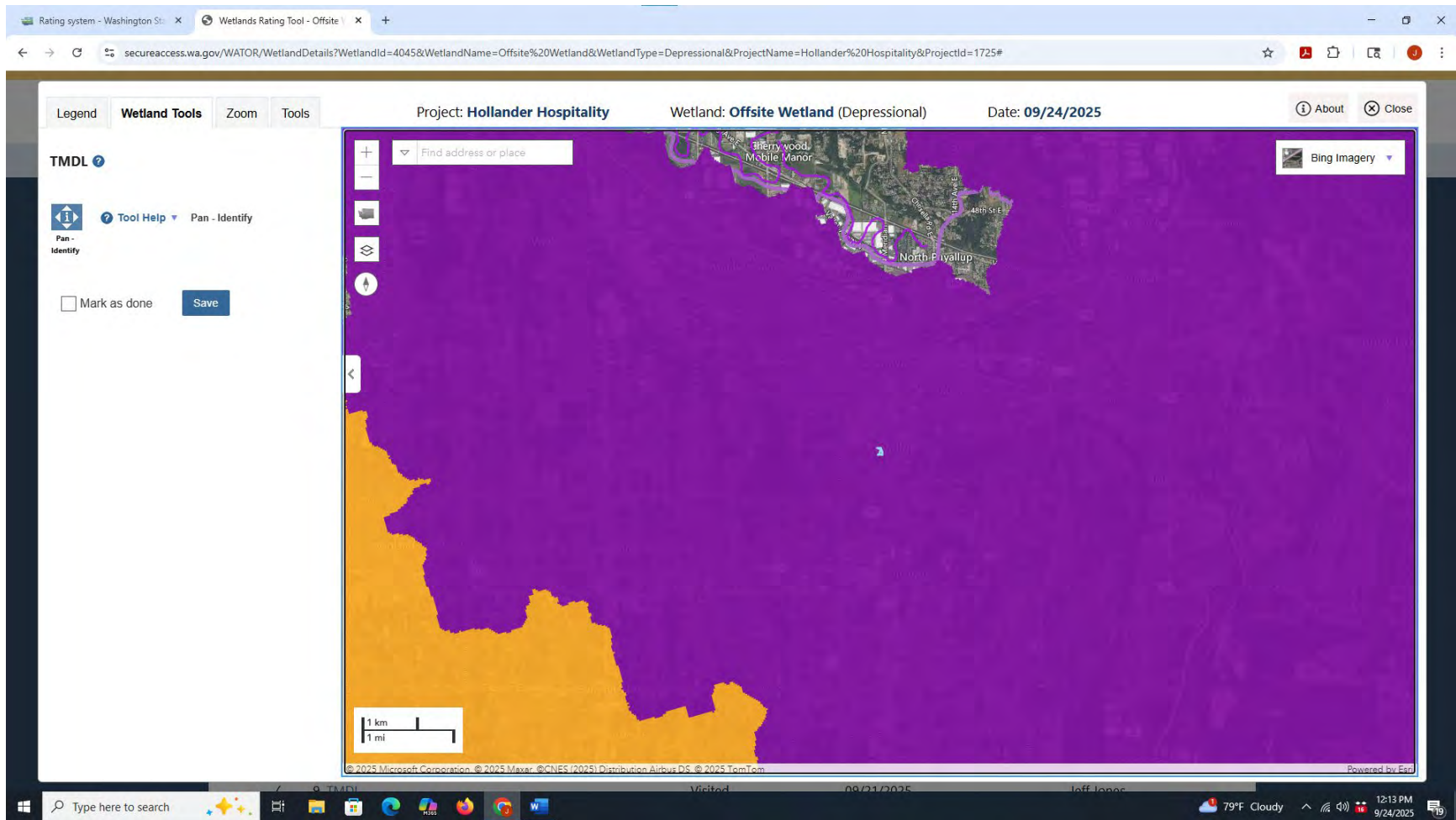


Figure 9 – TMDL's

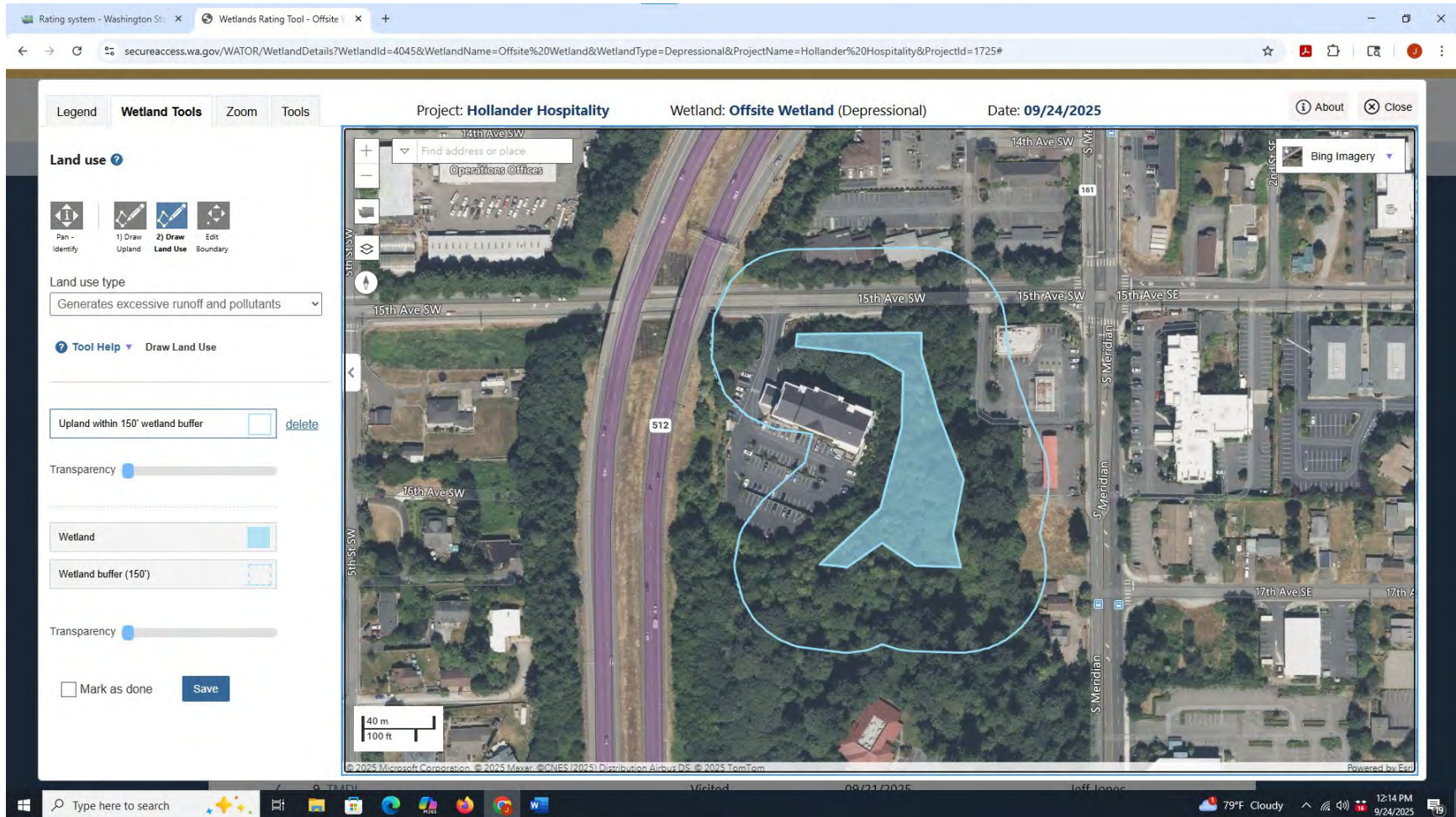


Figure 10 – 150' Land Use

# RATING SUMMARY – Western Washington

Name of wetland (or ID #): Wetland A Date of site visit: 1/21/25

Rated by R. King Trained by Ecology?  Yes  No Date of training Dec-14

HGM Class used for rating Depressional & Flats Wetland has multiple HGM classes?  Yes  No

**NOTE: Form is not complete with out the figures requested (figures can be combined).**

Source of base aerial photo/map Google Earth Aerial

**OVERALL WETLAND CATEGORY** III (based on functions  or special characteristics )

### 1. Category of wetland based on FUNCTIONS

- Category I - Total score = 23 - 27
- Category II - Total score = 20 - 22
- X   Category III - Total score = 16 - 19
- Category IV - Total score = 9 - 15

**Score for each function based on three ratings**  
(order of ratings is not important)

9 = H, H, H  
 8 = H, H, M  
 7 = H, H, L  
 7 = H, M, M  
 6 = H, M, L  
 6 = M, M, M  
 5 = H, L, L  
 5 = M, M, L  
 4 = M, L, L  
 3 = L, L, L

FUNCTION	Improving Water Quality	Hydrologic	Habitat	
<i>List appropriate rating (H, M, L)</i>				
Site Potential	H	L	M	
Landscape Potential	M	H	L	
Value	M	L	M	<b>Total</b>
<b>Score Based on Ratings</b>	7	5	5	<b>17</b>

### 2. Category based on SPECIAL CHARACTERISTICS of wetland

CHARACTERISTIC	Category
Estuarine	
Wetland of High Conservation Value	
Bog	
Mature Forest	
Old Growth Forest	
Coastal Lagoon	
Interdunal	
None of the above	<b>X</b>

## Maps and Figures required to answer questions correctly for Western Washington

### Depressional Wetlands

Map of:	To answer questions:	Figure #
Cowardin plant classes	D 1.3, H 1.1, H 1.4	A
Hydroperiods	D 1.4, H 1.2	B
Location of outlet ( <i>can be added to map of hydroperiods</i> )	D 1.1, D 4.1	B
Boundary of area within 150 ft of the wetland ( <i>can be added to another figure</i> )	D 2.2, D 5.2	C
Map of the contributing basin	D 4.3, D 5.3	D
1 km Polygon: Area that extends 1 km from entire wetland edge - including polygons for accessible habitat and undisturbed habitat	H 2.1, H 2.2, H 2.3	E,F
Screen capture of map of 303(d) listed waters in basin (from Ecology website)	D 3.1, D 3.2	G
Screen capture of list of TMDLs for WRIA in which unit is found (from web)	D 3.3	G

### Riverine Wetlands

Map of:	To answer questions:	Figure #
Cowardin plant classes	H 1.1, H 1.4	
Hydroperiods	H 1.2	
Ponded depressions	R 1.1	
Boundary of area within 150 ft of the wetland ( <i>can be added to another figure</i> )	R 2.4	
Plant cover of trees, shrubs, and herbaceous plants	R 1.2, R 4.2	
Width of unit vs. width of stream ( <i>can be added to another figure</i> )	R 4.1	
Map of the contributing basin	R 2.2, R 2.3, R 5.2	
1 km Polygon: Area that extends 1 km from entire wetland edge - including polygons for accessible habitat and undisturbed habitat	H 2.1, H 2.2, H 2.3	
Screen capture of map of 303(d) listed waters in basin (from Ecology website)	R 3.1	
Screen capture of list of TMDLs for WRIA in which unit is found (from web)	R 3.2, R 3.3	

### Lake Fringe Wetlands

Map of:	To answer questions:	Figure #
Cowardin plant classes	L 1.1, L 4.1, H 1.1, H 1.4	
Plant cover of trees, shrubs, and herbaceous plants	L 1.2	
Boundary of area within 150 ft of the wetland ( <i>can be added to another figure</i> )	L 2.2	
1 km Polygon: Area that extends 1 km from entire wetland edge - including polygons for accessible habitat and undisturbed habitat	H 2.1, H 2.2, H 2.3	
Screen capture of map of 303(d) listed waters in basin (from Ecology website)	L 3.1, L 3.2	
Screen capture of list of TMDLs for WRIA in which unit is found (from web)	L 3.3	

### Slope Wetlands

Map of:	To answer questions:	Figure #
Cowardin plant classes	H 1.1, H 1.4	
Hydroperiods	H 1.2	
Plant cover of <b>dense</b> trees, shrubs, and herbaceous plants	S 1.3	
Plant cover of <b>dense, rigid</b> trees, shrubs, and herbaceous plants ( <i>can be added to another figure</i> )	S 4.1	
Boundary of area within 150 ft of the wetland ( <i>can be added to another figure</i> )	S 2.1, S 5.1	
1 km Polygon: Area that extends 1 km from entire wetland edge - including polygons for accessible habitat and undisturbed habitat	H 2.1, H 2.2, H 2.3	
Screen capture of map of 303(d) listed waters in basin (from Ecology website)	S 3.1, S 3.2	
Screen capture of list of TMDLs for WRIA in which unit is found (from web)	S 3.3	

## HGM Classification of Wetland in Western Washington

For questions 1 -7, the criteria described must apply to the entire unit being rated.

If hydrologic criteria listed in each question do not apply to the entire unit being rated, you probably have a unit with multiple HGM classes. In this case, identify which hydrologic criteria in questions 1 - 7 apply, and go to Question 8.

1. Are the water levels in the entire unit usually controlled by tides except during floods?

- NO - go to 2  YES - the wetland class is **Tidal Fringe** - go to 1.1

1.1 Is the salinity of the water during periods of annual low flow below 0.5 ppt (parts per thousand)?

- NO - Saltwater Tidal Fringe (Estuarine)**  **YES - Freshwater Tidal Fringe**  
*If your wetland can be classified as a Freshwater Tidal Fringe use the forms for **Riverine** wetlands. If it is Saltwater Tidal Fringe it is an **Estuarine** wetland and is not scored. This method **cannot** be used to score functions for estuarine wetlands.*

2. The entire wetland unit is flat and precipitation is the only source (>90%) of water to it. Groundwater and surface water runoff are NOT sources of water to the unit.

- NO - go to 3  YES - The wetland class is **Flats**  
*If your wetland can be classified as a Flats wetland, use the form for **Depressional** wetlands.*

3. Does the entire wetland unit **meet all** of the following criteria?

- The vegetated part of the wetland is on the shores of a body of permanent open water (without any plants on the surface at any time of the year) at least 20 ac (8 ha) in size;  
 At least 30% of the open water area is deeper than 6.6 ft (2 m).

- NO - go to 4  YES - The wetland class is **Lake Fringe** (Lacustrine Fringe)

4. Does the entire wetland unit **meet all** of the following criteria?

- The wetland is on a slope (*slope can be very gradual*),  
 The water flows through the wetland in one direction (unidirectional) and usually comes from seeps. It may flow subsurface, as sheetflow, or in a swale without distinct banks.  
 The water leaves the wetland **without being impounded**.

- NO - go to 5  YES - The wetland class is **Slope**

**NOTE:** Surface water does not pond in these type of wetlands except occasionally in very small and shallow depressions or behind hummocks (depressions are usually <3 ft diameter and less than 1 ft deep).

5. Does the entire wetland unit **meet all** of the following criteria?

- The unit is in a valley, or stream channel, where it gets inundated by overbank flooding from that stream or river,  
 The overbank flooding occurs at least once every 2 years.

- NO - go to 6  YES - The wetland class is **Riverine**

**NOTE:** The Riverine unit can contain depressions that are filled with water when the river is not flooding.

6. Is the entire wetland unit in a topographic depression in which water ponds, or is saturated to the surface, at some time during the year? *This means that any outlet, if present, is higher than the interior of the wetland.*

NO - go to 7

YES - The wetland class is **Depressional**

7. Is the entire wetland unit located in a very flat area with no obvious depression and no overbank flooding? The unit does not pond surface water more than a few inches. The unit seems to be maintained by high groundwater in the area. The wetland may be ditched, but has no obvious natural outlet.

NO - go to 8

YES - The wetland class is **Depressional**

8. Your wetland unit seems to be difficult to classify and probably contains several different HGM classes. For example, seeps at the base of a slope may grade into a riverine floodplain, or a small stream within a Depressional wetland has a zone of flooding along its sides. **GO BACK AND IDENTIFY WHICH OF THE HYDROLOGIC REGIMES DESCRIBED IN QUESTIONS 1-7 APPLY TO DIFFERENT AREAS IN THE UNIT** (make a rough sketch to help you decide). Use the following table to identify the appropriate class to use for the rating system if you have several HGM classes present within the wetland unit being scored.

**NOTE:** Use this table only if the class that is recommended in the second column represents 10% or more of the total area of the wetland unit being rated. If the area of the HGM class listed in column 2 is less than 10% of the unit; classify the wetland using the class that represents more than 90% of the total area.

HGM classes within the wetland unit being rated	HGM class to use in rating
Slope + Riverine	Riverine
Slope + Depressional	Depressional
Slope + Lake Fringe	Lake Fringe
Depressional + Riverine along stream within boundary of depression	Depressional
Depressional + Lake Fringe	Depressional
Riverine + Lake Fringe	Riverine
Salt Water Tidal Fringe and any other class of freshwater wetland	Treat as ESTUARINE

*If you are still unable to determine which of the above criteria apply to your wetland, or if you have **more than 2 HGM classes** within a wetland boundary, classify the wetland as Depressional for the rating.*

NOTES and FIELD OBSERVATIONS:

**DEPRESSIONAL AND FLATS WETLANDS****Water Quality Functions** - Indicators that the site functions to improve water quality

D 1.0. Does the site have the potential to improve water quality?		
D 1.1. <u>Characteristics of surface water outflows from the wetland:</u>		
Wetland is a depression or flat depression (QUESTION 7 on key) with no surface water leaving it (no outlet).	points = 3	2
Wetland has an intermittently flowing stream or ditch, OR highly constricted permanently flowing outlet.	points = 2	
<input type="checkbox"/> Wetland has an unconstricted, or slightly constricted, surface outlet that is permanently flowing	points = 1	
<input type="checkbox"/> Wetland is a flat depression (QUESTION 7 on key), whose outlet is a permanently flowing ditch.	points = 1	
D 1.2. <u>The soil 2 in below the surface (or duff layer) is true clay or true organic (use NRCS definitions).</u>		Yes = 4 No = 0
D 1.3. <u>Characteristics and distribution of persistent plants</u> (Emergent, Scrub-shrub, and/or Forested Cowardin classes):		
Wetland has persistent, ungrazed, plants > 95% of area	points = 5	5
Wetland has persistent, ungrazed, plants > ½ of area	points = 3	
Wetland has persistent, ungrazed plants > 1/10 of area	points = 1	
Wetland has persistent, ungrazed plants < 1/10 of area	points = 0	
D 1.4. <u>Characteristics of seasonal ponding or inundation:</u>		
<i>This is the area that is ponded for at least 2 months. See description in manual.</i>		
Area seasonally ponded is > ½ total area of wetland	points = 4	2
Area seasonally ponded is > ¼ total area of wetland	points = 2	
Area seasonally ponded is < ¼ total area of wetland	points = 0	
Total for D 1		Add the points in the boxes above
		<b>9</b>

**Rating of Site Potential** If score is:  2 - 16 = H  11 = M  0 = L Record the rating on the first page

D 2.0. Does the landscape have the potential to support the water quality function of the site?		
D 2.1. Does the wetland unit receive stormwater discharges?	Yes = 1 No = 0	1
D 2.2. Is > 10% of the area within 150 ft of the wetland in land uses that generate pollutants?	Yes = 1 No = 0	1
D 2.3. Are there septic systems within 250 ft of the wetland?	Yes = 1 No = 0	0
D 2.4. Are there other sources of pollutants coming into the wetland that are not listed in questions D 2.1 - D 2.3?		0
Source	Yes = 1 No = 0	
Total for D 2		Add the points in the boxes above
		<b>2</b>

**Rating of Landscape Potential** If score is:  or 4 = H  or 2 = M  L Record the rating on the first page

D 3.0. Is the water quality improvement provided by the site valuable to society?		
D 3.1. Does the wetland discharge directly (i.e., within 1 mi) to a stream, river, lake, or marine water that is on the 303(d) list?		
	Yes = 1 No = 0	1
D 3.2. Is the wetland in a basin or sub-basin where an aquatic resource is on the 303(d) list?		
	Yes = 1 No = 0	1
D 3.3. Has the site been identified in a watershed or local plan as important for maintaining water quality (answer YES if there is a TMDL for the basin in which the unit is found)?		
	Yes = 2 No = 0	2
Total for D 3		Add the points in the boxes above
		<b>4</b>

**Rating of Value** If score is:  2 - 4 = H  = M  L Record the rating on the first page

### DEPRESSIONAL AND FLATS WETLANDS

**Hydrologic Functions** - Indicators that the site functions to reduce flooding and stream degradation

<b>D 4.0. Does the site have the potential to reduce flooding and erosion?</b>		
<b>D 4.1. Characteristics of surface water outflows from the wetland:</b>		
Wetland is a depression or flat depression with no surface water leaving it (no outlet)	points = 4	2
Wetland has an intermittently flowing stream or ditch, OR highly constricted permanently flowing outlet	points = 2	
Wetland is a flat depression (QUESTION 7 on key), whose outlet is a permanently flowing ditch	points = 1	
Wetland has an unconstricted, or slightly constricted, surface outlet that is permanently flowing	points = 0	
D 4.2. <u>Depth of storage during wet periods</u> : Estimate the height of ponding above the bottom of the outlet. For wetlands with no outlet, measure from the surface of permanent water or if dry, the deepest part.		
Marks of ponding are 3 ft or more above the surface or bottom of outlet	points = 7	
Marks of ponding between 2 ft to < 3 ft from surface or bottom of outlet	points = 5	
<input type="checkbox"/> Marks are at least 0.5 ft to < 2 ft from surface or bottom of outlet	points = 3	
<input type="checkbox"/> The wetland is a "headwater" wetland	points = 3	
Wetland is flat but has small depressions on the surface that trap water	points = 1	
Marks of ponding less than 0.5 ft (6 in)	points = 0	
D 4.3. <u>Contribution of the wetland to storage in the watershed</u> : Estimate the ratio of the area of upstream basin contributing surface water to the wetland to the area of the wetland unit itself.		
<input type="checkbox"/> The area of the basin is less than 10 times the area of the unit	points = 5	0
The area of the basin is 10 to 100 times the area of the unit	points = 3	
The area of the basin is more than 100 times the area of the unit	points = 0	
<input type="checkbox"/> Entire wetland is in the Flats class	points = 5	
<b>Total for D 4</b>		

**Rating of Site Potential** If score is:  2 - 16 = H     11 = M     0-5 = L    *Record the rating on the first page*

<b>D 5.0. Does the landscape have the potential to support hydrologic function of the site?</b>		
D 5.1. Does the wetland unit receive stormwater discharges?	Yes = 1   No = 0	1
D 5.2. Is > 10% of the area within 150 ft of the wetland in land uses that generate excess runoff?	Yes = 1   No = 0	1
D 5.3. Is more than 25% of the contributing basin of the wetland covered with intensive human land uses (residential at >1 residence/ac, urban, commercial, agriculture, etc.)?	Yes = 1   No = 0	1
<b>Total for D 5</b>		<b>3</b>

**Rating of Landscape Potential** If score is:  3 = H     2 = M     1 = L    *Record the rating on the first page*

<b>D 6.0. Are the hydrologic functions provided by the site valuable to society?</b>		
<b>D 6.1. The unit is in a landscape that has flooding problems. Choose the description that best matches conditions around the wetland unit being rated. Do not add points. Choose the highest score if more than one condition is met.</b>		
The wetland captures surface water that would otherwise flow down-gradient into areas where flooding has damaged human or natural resources (e.g., houses or salmon redds): <ul style="list-style-type: none"> <li><input type="checkbox"/> • Flooding occurs in a sub-basin that is immediately down-gradient of unit.</li> <li><input type="checkbox"/> • Surface flooding problems are in a sub-basin farther down-gradient.</li> </ul>	points = 2	0
<input type="checkbox"/> Flooding from groundwater is an issue in the sub-basin.	points = 1	
<input type="checkbox"/> The existing or potential outflow from the wetland is so constrained by human or natural conditions that the water stored by the wetland cannot reach areas that flood. Explain why	points = 1	
<input type="checkbox"/> There are no problems with flooding downstream of the wetland.	points = 0	
	points = 0	
D 6.2. Has the site been identified as important for flood storage or flood conveyance in a regional flood control plan?		
	Yes = 2   No = 0	
<b>Total for D 6</b>		<b>0</b>

**Rating of Value** If score is:  2 - 4 = H     3 = M     1 = L    *Record the rating on the first page*

**These questions apply to wetlands of all HGM classes.**

**HABITAT FUNCTIONS** - Indicators that site functions to provide important habitat

H 1.0. Does the site have the potential to provide habitat?

H 1.1. Structure of plant community: *Indicators are Cowardin classes and strata within the Forested class. Check the Cowardin plant classes in the wetland. Up to 10 patches may be combined for each class to meet the threshold of ¼ ac or more than 10% of the unit if it is smaller than 2.5 ac. Add the number of structures checked.*

- Aquatic bed 4 structures or more: points = 4
  - Emergent 3 structures: points = 2
  - Scrub-shrub (areas where shrubs have > 30% cover) 2 structures: points = 1
  - Forested (areas where trees have > 30% cover) 1 structure: points = 0
- If the unit has a Forested class, check if:*
- The Forested class has 3 out of 5 strata (canopy, sub-canopy, shrubs, herbaceous, moss/ground-cover) that each cover 20% within the Forested polygon

1

H 1.2. Hydroperiods

Check the types of water regimes (hydroperiods) present within the wetland. The water regime has to cover more than 10% of the wetland or ¼ ac to count (*see text for descriptions of hydroperiods*).

- Permanently flooded or inundated 4 or more types present: points = 3
- Seasonally flooded or inundated 3 types present: points = 2
- Occasionally flooded or inundated 2 types present: points = 1
- Saturated only 1 types present: points = 0
- Permanently flowing stream or river in, or adjacent to, the wetland
- Seasonally flowing stream in, or adjacent to, the wetland
- Lake Fringe wetland** **2 points**
- Freshwater tidal wetland** **2 points**

2

H 1.3. Richness of plant species

Count the number of plant species in the wetland that cover at least 10 ft<sup>2</sup>. *Different patches of the same species can be combined to meet the size threshold and you do not have to name the species. Do not include Eurasian milfoil, reed canarygrass, purple loosestrife, Canadian thistle*

- If you counted:
- > 19 species points = 2
  - 5 - 19 species points = 1
  - < 5 species points = 0

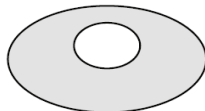
1

H 1.4. Interspersion of habitats

Decide from the diagrams below whether interspersions among Cowardin plants classes (described in H 1.1), or the classes and unvegetated areas (can include open water or mudflats) is high, moderate, low, or none. *If you have four or more plant classes or three classes and open water, the rating is always high.*



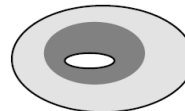
None = 0 points



Low = 1 point

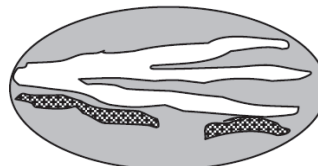
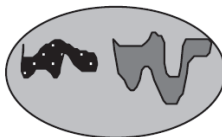


Moderate = 2 points



2

All three diagrams in this row are **HIGH = 3 points**





## WDFW Priority Habitats

Priority habitats listed by WDFW (see complete descriptions of WDFW priority habitats, and the counties in which they can be found, in: Washington Department of Fish and Wildlife. 2008. Priority Habitat and Species List. Olympia, Washington. 177 pp.  
<http://wdfw.wa.gov/publications/00165/wdfw00165.pdf> or access the list from here:  
<http://wdfw.wa.gov/conservation/phs/list/>

Count how many of the following priority habitats are within 330 ft (100 m) of the wetland unit: **NOTE**: This question is independent of the land use between the wetland unit and the priority habitat.

- Aspen Stands**: Pure or mixed stands of aspen greater than 1 ac (0.4 ha).
- Biodiversity Areas and Corridors**: Areas of habitat that are relatively important to various species of native fish and wildlife (*full descriptions in WDFW PHS report*).
- Herbaceous Balds**: Variable size patches of grass and forbs on shallow soils over bedrock.
- Old-growth/Mature forests**: Old-growth west of Cascade crest – Stands of at least 2 tree species, forming a multi-layered canopy with occasional small openings; with at least 8 trees/ac (20 trees/ha) > 32 in (81 cm) dbh or > 200 years of age. Mature forests – Stands with average diameters exceeding 21 in (53 cm) dbh; crown cover may be less than 100%; decay, decadence, numbers of snags, and quantity of large downed material is generally less than that found in old-growth; 80-200 years old west of the Cascade crest.
- Oregon White Oak**: Woodland stands of pure oak or oak/conifer associations where canopy coverage of the oak component is important (*full descriptions in WDFW PHS report p. 158 – see web link above*).
- Riparian**: The area adjacent to aquatic systems with flowing water that contains elements of both aquatic and terrestrial ecosystems which mutually influence each other.
- Westside Prairies**: Herbaceous, non-forested plant communities that can either take the form of a dry prairie or a wet prairie (*full descriptions in WDFW PHS report p. 161 – see web link above*).
- Instream**: The combination of physical, biological, and chemical processes and conditions that interact to provide functional life history requirements for instream fish and wildlife resources.
- Nearshore**: Relatively undisturbed nearshore habitats. These include Coastal Nearshore, Open Coast Nearshore, and Puget Sound Nearshore. (*full descriptions of habitats and the definition of relatively undisturbed are in WDFW report – see web link on previous page*).
- Caves**: A naturally occurring cavity, recess, void, or system of interconnected passages under the earth in soils, rock, ice, or other geological formations and is large enough to contain a human.
- Cliffs**: Greater than 25 ft (7.6 m) high and occurring below 5000 ft elevation.
- Talus**: Homogenous areas of rock rubble ranging in average size 0.5 - 6.5 ft (0.15 - 2.0 m), composed of basalt, andesite, and/or sedimentary rock, including riprap slides and mine tailings. May be associated with cliffs.
- Snags and Logs**: Trees are considered snags if they are dead or dying and exhibit sufficient decay characteristics to enable cavity excavation/use by wildlife. Priority snags have a diameter at breast height of > 20 in (51 cm) in western Washington and are > 6.5 ft (2 m) in height. Priority logs are > 12 in (30 cm) in diameter at the largest end, and > 20 ft (6 m) long.

**Note**: All vegetated wetlands are by definition a priority habitat but are not included in this list because they are addressed elsewhere.

## CATEGORIZATION BASED ON SPECIAL CHARACTERISTICS

Wetland Type	Category
<i>Check off any criteria that apply to the wetland. List the category when the appropriate criteria are met.</i>	
<p><b>SC 1.0. Estuarine Wetlands</b></p> <p>Does the wetland meet the following criteria for Estuarine wetlands?</p> <p><input type="checkbox"/> The dominant water regime is tidal,  <input type="checkbox"/> Vegetated, and  <input type="checkbox"/> With a salinity greater than 0.5 ppt</p> <p style="text-align: right;"><input type="checkbox"/> Yes - Go to <b>SC 1.1</b>      <input checked="" type="checkbox"/> No = <b>Not an estuarine wetland</b></p>	
<p>SC 1.1. Is the wetland within a National Wildlife Refuge, National Park, National Estuary Reserve, Natural Area Preserve, State Park or Educational, Environmental, or Scientific Reserve designated under WAC 332-30-151?</p> <p style="text-align: right;"><input type="checkbox"/> Yes = <b>Category I</b>      <input checked="" type="checkbox"/> No - Go to <b>SC 1.2</b></p>	
<p>SC 1.2. Is the wetland unit at least 1 ac in size and meets at least two of the following three conditions?</p> <p><input type="checkbox"/> The wetland is relatively undisturbed (has no diking, ditching, filling, cultivation, grazing, and has less than 10% cover of non-native plant species. (If non-native species are <i>Spartina</i>, see page 25)</p> <p><input type="checkbox"/> At least ¾ of the landward edge of the wetland has a 100 ft buffer of shrub, forest, or ungrazed or un-mowed grassland.</p> <p><input type="checkbox"/> The wetland has at least two of the following features: tidal channels, depressions with open water, or contiguous freshwater wetlands.</p> <p style="text-align: right;"><input type="checkbox"/> Yes = <b>Category I</b>      <input type="checkbox"/> No = <b>Category II</b></p>	
<p><b>SC 2.0. Wetlands of High Conservation Value (WHCV)</b></p>	
<p>SC 2.1. Has the WA Department of Natural Resources updated their website to include the list of Wetlands of High Conservation Value?</p> <p style="text-align: right;"><input type="checkbox"/> Yes - Go to <b>SC 2.2</b>      <input checked="" type="checkbox"/> No - Go to <b>SC 2.3</b></p>	
<p>SC 2.2. Is the wetland listed on the WDNR database as a Wetland of High Conservation Value?</p> <p style="text-align: right;"><input type="checkbox"/> Yes = <b>Category I</b>      <input checked="" type="checkbox"/> No = <b>Not WHCV</b></p>	
<p>SC 2.3. Is the wetland in a Section/Township/Range that contains a Natural Heritage wetland?  <a href="http://www1.dnr.wa.gov/nhp/refdesk/datasetsearch/wnhpwetlands.pdf">http://www1.dnr.wa.gov/nhp/refdesk/datasetsearch/wnhpwetlands.pdf</a></p> <p style="text-align: right;"><input type="checkbox"/> Yes - <b>Contact WNHP/WDNR and to SC 2.4</b>      <input checked="" type="checkbox"/> No = <b>Not WHCV</b></p>	
<p>SC 2.4. Has WDNR identified the wetland within the S/T/R as a Wetland of High Conservation Value and listed it on their website?</p> <p style="text-align: right;"><input type="checkbox"/> Yes = <b>Category I</b>      <input checked="" type="checkbox"/> No = <b>Not WHCV</b></p>	
<p><b>SC 3.0. Bogs</b></p>	
<p>Does the wetland (or any part of the unit) meet both the criteria for soils and vegetation in bogs? <i>Use the key below. If you answer YES you will still need to rate the wetland based on its functions.</i></p>	
<p>SC 3.1. Does an area within the wetland unit have organic soil horizons, either peats or mucks, that compose 16 in or more of the first 32 in of the soil profile?</p> <p style="text-align: right;"><input type="checkbox"/> Yes - Go to <b>SC 3.3</b>      <input checked="" type="checkbox"/> No - Go to <b>SC 3.2</b></p>	
<p>SC 3.2. Does an area within the wetland unit have organic soils, either peats or mucks, that are less than 16 in deep over bedrock, or an impermeable hardpan such as clay or volcanic ash, or that are floating on top of a lake or pond?</p> <p style="text-align: right;"><input type="checkbox"/> Yes - Go to <b>SC 3.3</b>      <input checked="" type="checkbox"/> No = <b>Is not a bog</b></p>	
<p>SC 3.3. Does an area with peats or mucks have more than 70% cover of mosses at ground level, AND at least a 30% cover of plant species listed in Table 4?</p> <p style="text-align: right;"><input type="checkbox"/> Yes = <b>Is a Category I bog</b>      <input type="checkbox"/> No - Go to <b>SC 3.4</b></p> <p><b>NOTE:</b> If you are uncertain about the extent of mosses in the understory, you may substitute that criterion by measuring the pH of the water that seeps into a hole dug at least 16 in deep. If the pH is less than 5.0 and the plant species in Table 4 are present, the wetland is a bog.</p>	
<p>SC 3.4. Is an area with peats or mucks forested (&gt; 30% cover) with Sitka spruce, subalpine fir, western red cedar, western hemlock, lodgepole pine, quaking aspen, Engelmann spruce, or western white pine, AND any of the species (or combination of species) listed in Table 4 provide more than 30% of the cover under the canopy?</p> <p style="text-align: right;"><input type="checkbox"/> Yes = <b>Is a Category I bog</b>      <input type="checkbox"/> No = <b>Is not a bog</b></p>	

<p><b>SC 4.0. Forested Wetlands</b>                  Does the wetland have at least 1 <u>contiguous acre</u> of forest that meets one of these criteria for the WA Department of Fish and Wildlife's forests as priority habitats? <b><i>If you answer YES you will still need to rate the wetland based on its functions.</i></b></p> <p><input type="checkbox"/> <b>Old-growth forests</b> (west of Cascade crest): Stands of at least two tree species, forming a multi-layered canopy with occasional small openings; with at least 8 trees/ac (20 trees/ha) that are at least 200 years of age OR have a diameter at breast height (dbh) of 32 in (81 cm) or more.</p> <p><input type="checkbox"/> <b>Mature forests</b> (west of the Cascade Crest): Stands where the largest trees are 80- 200 years old OR the species that make up the canopy have an average diameter (dbh) exceeding 21 in (53 cm).</p> <p style="text-align: right;"><input type="checkbox"/> Yes = <b>Category I</b>    <input checked="" type="checkbox"/> No = <b>Not a forested wetland for this section</b></p>	
<p><b>SC 5.0. Wetlands in Coastal Lagoons</b>                  Does the wetland meet all of the following criteria of a wetland in a coastal lagoon?</p> <p><input type="checkbox"/> The wetland lies in a depression adjacent to marine waters that is wholly or partially separated from marine waters by sandbanks, gravel banks, shingle, or, less frequently, rocks</p> <p><input type="checkbox"/> The lagoon in which the wetland is located contains ponded water that is saline or brackish (&gt; 0.5 ppt) during most of the year in at least a portion of the lagoon (<i>needs to be measured near the bottom</i>)</p> <p style="text-align: right;"><input type="checkbox"/> Yes - Go to <b>SC 5.1</b>    <input checked="" type="checkbox"/> No = <b>Not a wetland in a coastal lagoon</b></p> <p><b>SC 5.1. Does the wetland meet all of the following three conditions?</b></p> <p><input type="checkbox"/> The wetland is relatively undisturbed (has no diking, ditching, filling, cultivation, grazing), and has less than 20% cover of aggressive, opportunistic plant species (see list of species on p. 100).</p> <p><input type="checkbox"/> At least ¾ of the landward edge of the wetland has a 100 ft buffer of shrub, forest, or un-grazed or un-mowed grassland.</p> <p><input type="checkbox"/> The wetland is larger than 1/10 ac (4350 ft<sup>2</sup>)</p> <p style="text-align: right;"><input type="checkbox"/> Yes = <b>Category I</b>    <input type="checkbox"/> No = <b>Category II</b></p>	
<p><b>SC 6.0. Interdunal Wetlands</b>                  Is the wetland west of the 1889 line (also called the Western Boundary of Upland Ownership or WBUO)? <b><i>If you answer yes you will still need to rate the wetland based on its habitat functions.</i></b>                  In practical terms that means the following geographic areas:</p> <p><input type="checkbox"/> Long Beach Peninsula: Lands west of SR 103</p> <p><input type="checkbox"/> Grayland-Westport: Lands west of SR 105</p> <p><input type="checkbox"/> Ocean Shores-Copalis: Lands west of SR 115 and SR 109</p> <p style="text-align: right;"><input type="checkbox"/> Yes - Go to <b>SC 6.1</b>    <input checked="" type="checkbox"/> No = <b>Not an interdunal wetland for rating</b></p> <p><b>SC 6.1. Is the wetland 1 ac or larger and scores an 8 or 9 for the habitat functions on the form (rates H,H,H or H,H,M for the three aspects of function)?</b></p> <p style="text-align: right;"><input type="checkbox"/> Yes = <b>Category I</b>    <input type="checkbox"/> No - Go to <b>SC 6.2</b></p> <p><b>SC 6.2. Is the wetland 1 ac or larger, or is it in a mosaic of wetlands that is 1 ac or larger?</b></p> <p style="text-align: right;"><input type="checkbox"/> Yes = <b>Category II</b>    <input type="checkbox"/> No - Go to <b>SC 6.3</b></p> <p><b>SC 6.3. Is the unit between 0.1 and 1 ac, or is it in a mosaic of wetlands that is between 0.1 and 1 ac?</b></p> <p style="text-align: right;"><input type="checkbox"/> Yes = <b>Category III</b>    <input type="checkbox"/> No = <b>Category IV</b></p>	
<p><b>Category of wetland based on Special Characteristics</b>                  If you answered No for all types, enter "Not Applicable" on Summary Form</p>	

Figure A - Cowardin Classes  
Google Earth Aerial

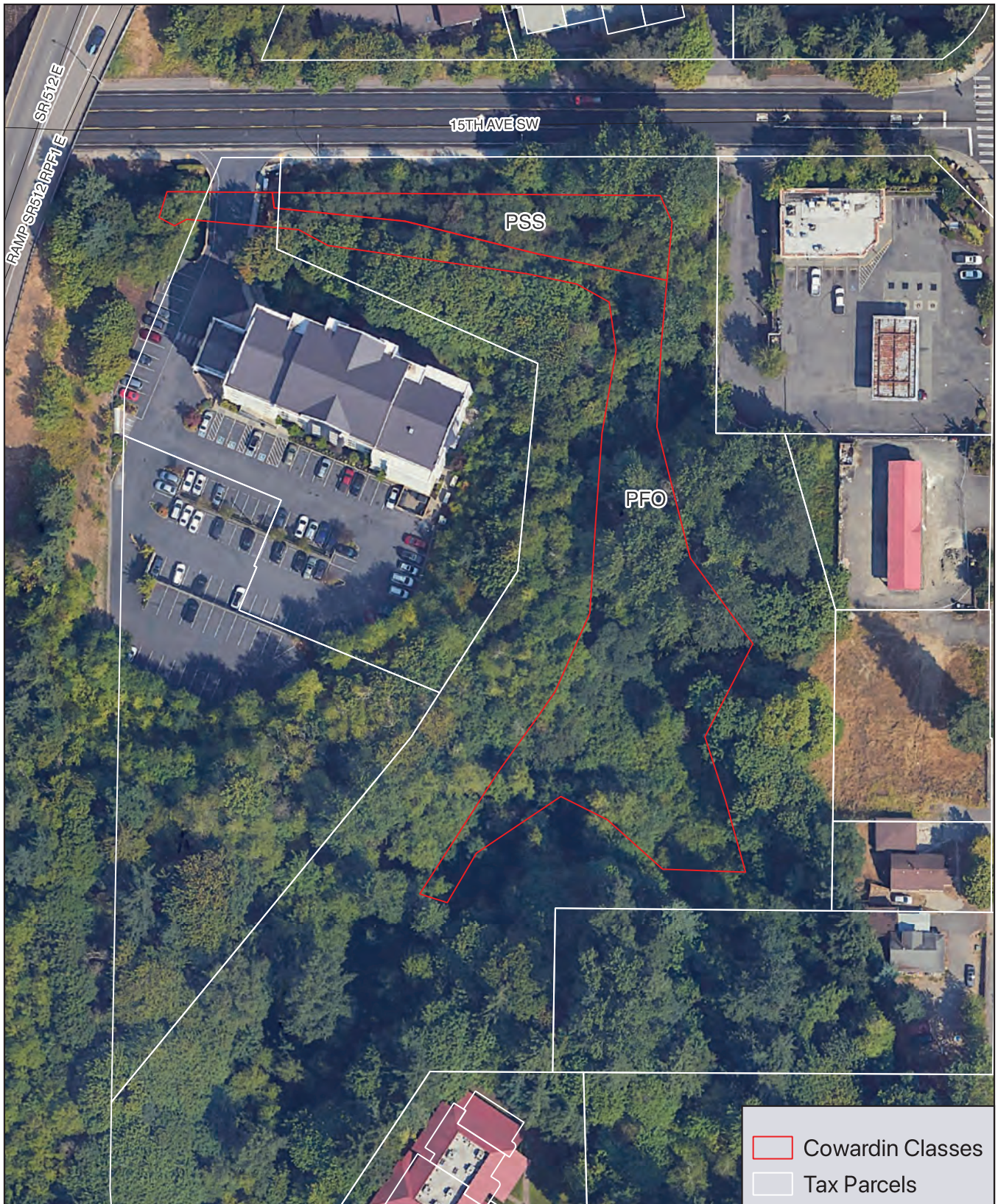


Figure B- Hydroperiods and Outlet  
Google Earth Aerial

0 100 200 ft





Figure D - Contributing Basin  
Google Earth Aerial

0 1,400 2,800 ft



Figure E - Accessible and Undisturbed Habitat



Figure F - Moderate Tax Parcels Within 1 Km.

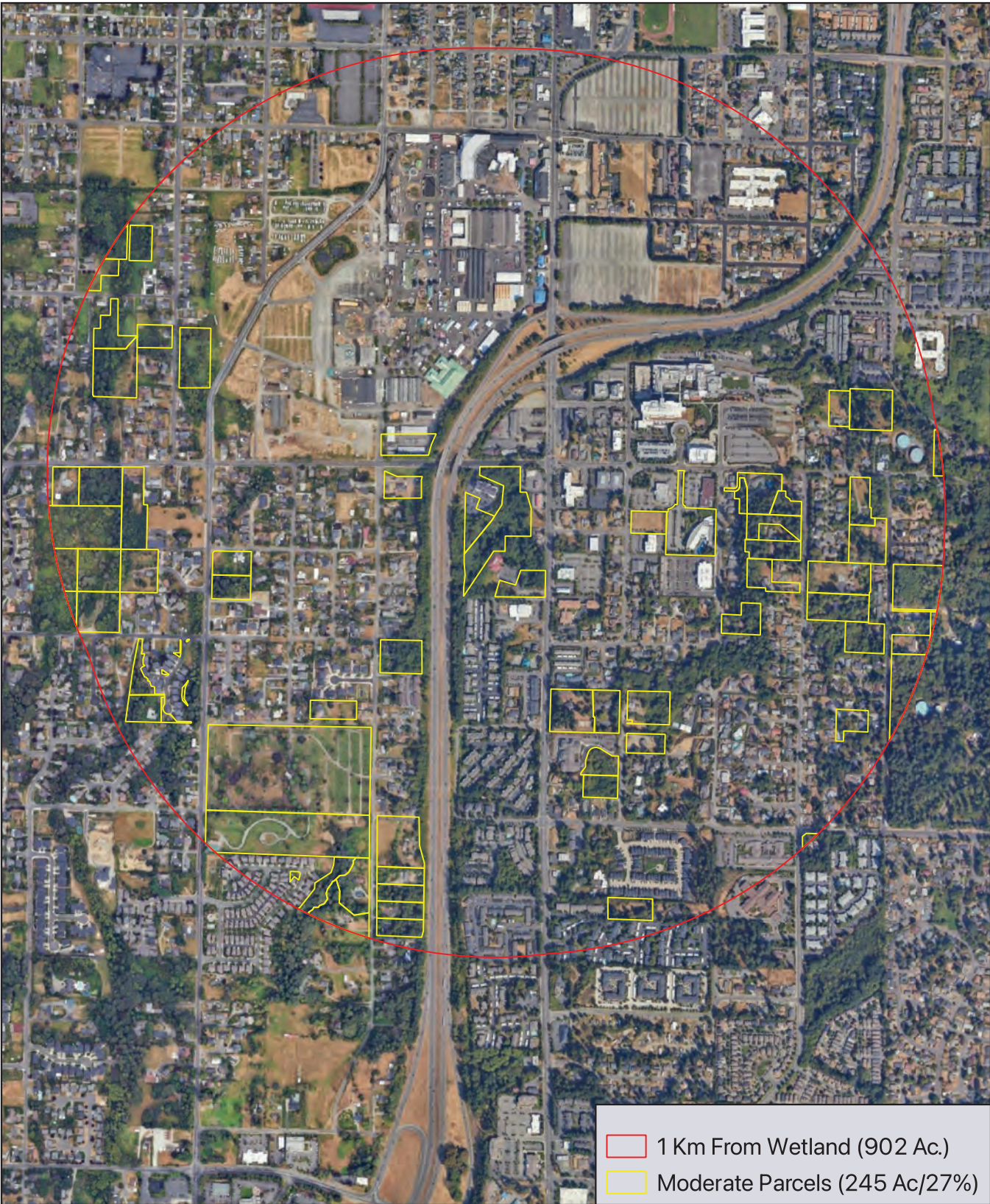


Figure G - 303D Waters and TMDL's

